

Lloyd's Register of Shipping.

SURVEYS FOR FREEBOARD.

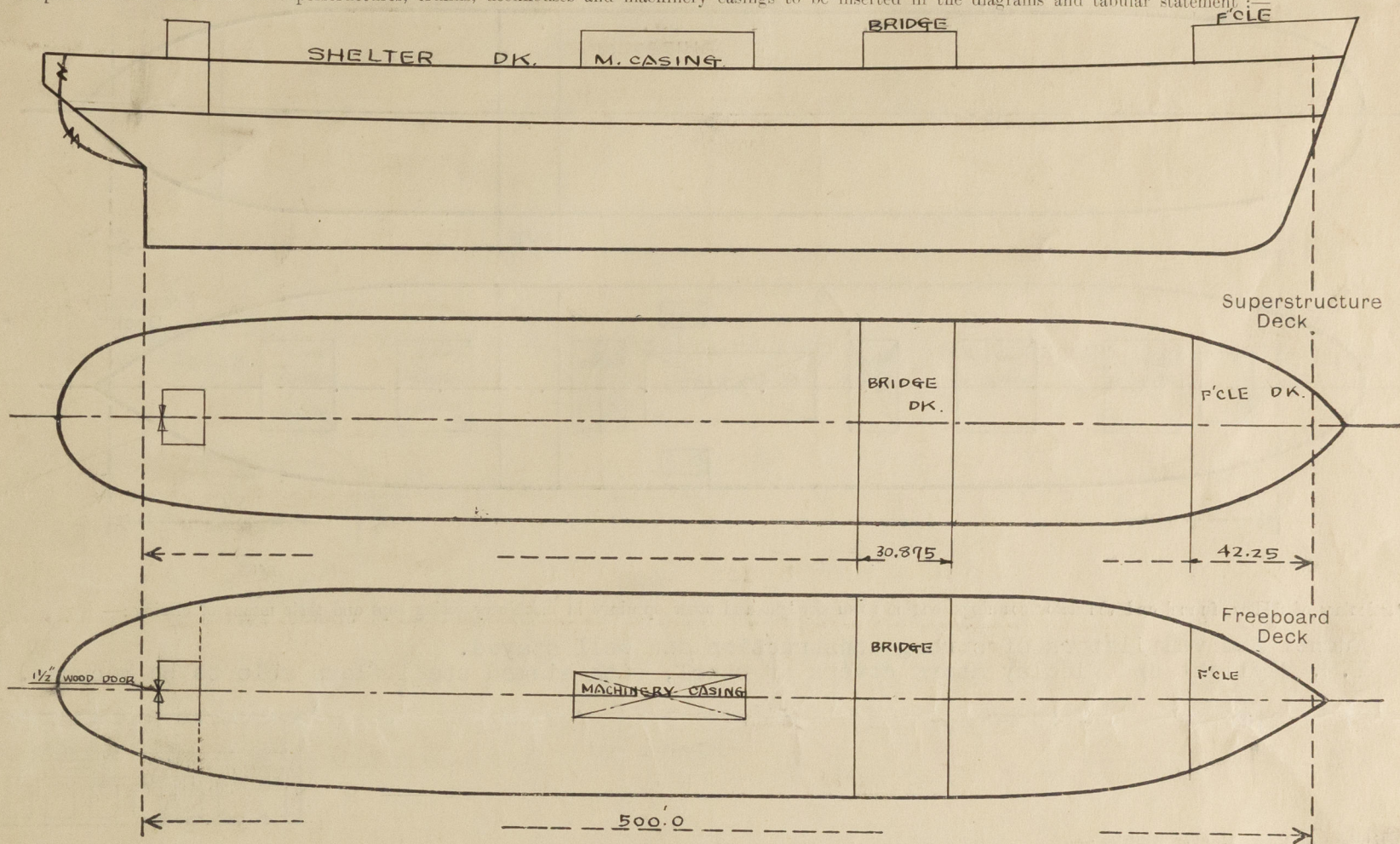
(CONDITIONS OF ASSIGNMENT.)

 Index No. _____
 (For London Office only.)

E2 APR 1953

Ship's Name "CERES" Port of Survey Sasebo
 Official Number _____ Surveyor's Signature Peter Manson
 Nationality and Port of Registry Panamanian - Panama Date of Survey 14.15th November, 1952.

Disposition and dimensions of superstructures, trunks, deckhouses and machinery casings to be inserted in the diagrams and tabular statement:



Particulars of Superstructures, Trunks, Casings, Deckhouses.

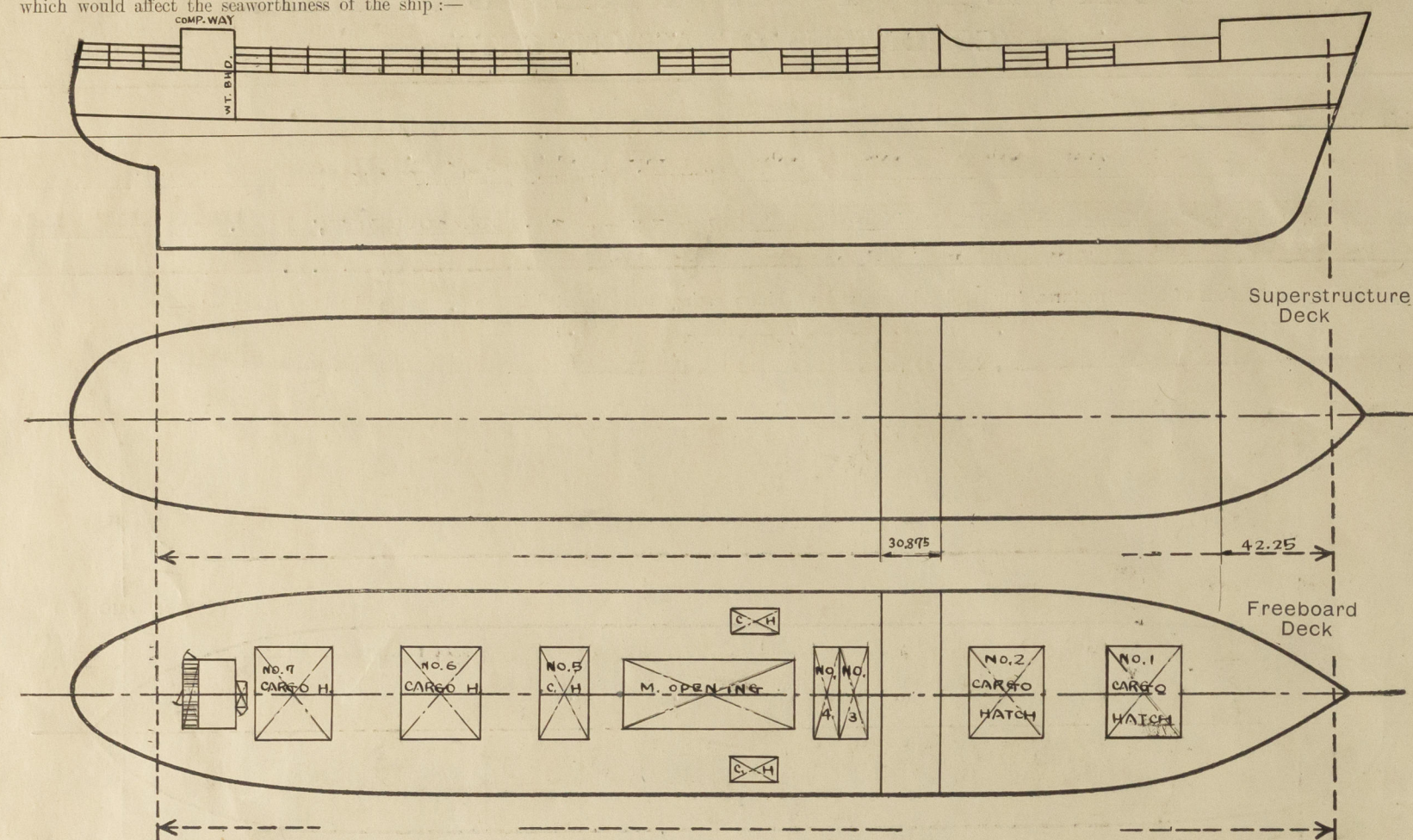
	Coaming	Plating	Stiffeners	Spacing	End Attachments of Stiffeners	Size of Openings	Height of Sills	Height of Casings
Poop Bulkhead	----							
Raised Quarter Deck Bulkhead ...	----							
Bridge, After Bulkhead36	.28	3x3x32	36."	Lugged	5'-6"x2'-11"	10"	7'-6"
Bridge, Forward Bulkhead40	.32	3x3x.32	24"	Lugged	5'-6"x3'-6"	16"	7'-6"
Forecastle Bulkhead30	.30	3x3x.32	33"	None	66"x28"	12"	7'-6"
Trunk, Aft	----							
Trunk, Forward	----							
Exposed Machinery Casings on Freeboard or Raised Quarter Decks40	.34	3½x3½x.42	28"	Bkt at Top Bottom Continuous	5'-0"x3'-0"	18"	7'-6"
Exposed Machinery Casings on Superstructure Decks	----							
Machinery Casings within Superstructures not fitted with Class I Closing Appliances	----							
Deckhouses on Flush Deck Ships ...	----							

Particulars of Closing Appliances (state if capable of being manipulated from both sides).

Poop Bulkhead	----
Raised Quarter Deck Bulkhead ...	----
Bridge, After Bulkhead	Hinged W/T Steel door, closed from one side only.
Bridge, Forward Bulkhead	Hinged steel W/T Door, capable of being manipulated from both sides. ✓
Forecastle Bulkhead	Hinged wood door - capable of being manipulated from both sides. ✓
Exposed Machinery Casings on Freeboard or Raised Quarter Decks ...	Hinged Steel door - capable of being manipulated from both sides. ✓
Exposed Machinery Casings on Superstructure Decks	----
Machinery Casings within Superstructures not fitted with Class I Closing Appliances	----
Deckhouses on Flush Deck Ships ...	Hinged Wood Door - capable of being manipulated from both sides. ✓

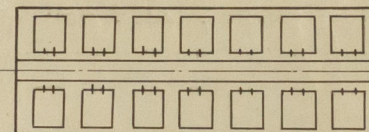
PARTICULARS OF PROTECTION TO OPENINGS, ETC.

The following diagrams should be used to indicate the positions of cargo and coaling hatchways, gangway, cargo and coaling ports, ventilators, companionways, etc., which would affect the seaworthiness of the ship:—



Particulars of fiddle, funnel and ventilator coamings, engine room skylight and other openings in machinery casing tops and their means of closing:—

Funnel and ventilators of strong construction and well stayed.
E.R. Skylight and Fiddle storm covers of steel, with hinged steel flaps able to be secured.



Particulars of Flush Bunker Scuttles:—

Particulars of Companionways:—

~~Poop~~ Deckhouse of steel - strongly constructed enclosing ladderway down to ~~Poop~~ Accommodation, *below*
AFT with strong wood doors, capable of being manipulated from both sides. Sill height 10".

Particulars of Ventilators in exposed positions on freeboard and superstructure decks:—

Deck.	No.	Type	Size	coaming	Space
Upper Dk.	10	C.V.	23" Dia.	36"x.36"	Cargo Spaces
	7	C.V.	17" Dia.	36"x.36"	Bunkers & Cargo Spaces
	3	C.V.	14" Dia.	36"x.36"	Cargo Spaces
	5	C.V.	9" Dia.	30"x.36"	Poop Accom.
Fcle Dk.	2	C.V.	14" Dia.	36"x.36"	Fcle Twn. Dks.

Closing Arrangements

Cowl Vents - Wood plugs and Canvas Covers.

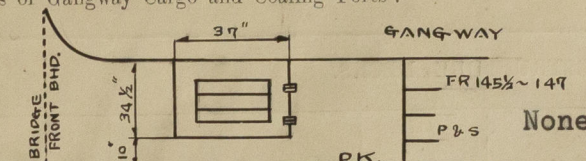
Particulars of Air Pipes in exposed positions on freeboard, raised quarter, or superstructure decks:—

Deck	No.	Size	Ht. to Lip	Compartment
Fcle.	1	6"	6"	F.P.
	2	3 1/2"	7"	No.1 D.B.Tk.
Upper Dk.	10	3"	36"	D.B. Tks.
	2	2 1/2"	22 1/2"	No.6 D.B. Tks.
	2	3 1/2"	36"	No.6 D.B. Tk.
	1	3 1/2"	9"	No.7 D.B. Tk.
	4	3"	36"	No.7 D.B. Tk.

Closing Arrangements

Wood Plugs
O.F. air pipes fitted with gauzes.

Particulars of Gangway Cargo and Coaling Ports:—

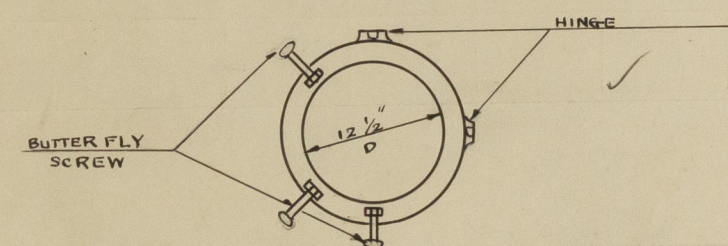


Particulars of Scuppers and Sanitary Discharge Pipes:—

Shelter Deck - Weather deck scuppers discharge overboard through shell with open end.
Forecastle - Sanitary & scupper discharges led through shell above L.W.L. & fitted with storm valve.
Shelter Deck - Sanitary & scupper discharges led through shell above L.W.L. & fitted with storm valve.

Particulars of Side Scuttles:—

In shell of Poop Accommodation & Forecastle, of strong construction and fitted with hinged deadlights.



Vertical distance of Sill of lowest Side Scuttle above top of keel 44 - 11 1/2"

Particulars of Guard Rails:—

Forecastle 3 tier rails. Upper rail 1 1/4" G.W. 1. pipe
Lower rails 7/8" dia rod stanchions 3'-9" high.
Upper Deck 4 tier rails. Upper rail 1 1/4" G.W. 1 pipe spaced approx. 4'-6" apart.
Lower rails 7/8" dia. rod stanchions 4'-7" high.
spaced approx. 8'-0" apart.

Particulars of Gangways, Lifelines, etc.:—

Manila Rope

Particulars of Freeing Arrangements.

	Length of Bulwark	Height of Bulwark	Size of Freeing Ports	Number each side	Area each side	Rule area each side
After Well ...			Part Open Rails			
Forward Well ...						

State position of each freeing port ... After Well:—
(F. and A. position and height above deck edge) Forward Well:—

State whether the freeing ports are fitted with shutters, bars, or rails, and give particulars of such:—

Additional area where sheer is less than standard.

PARTICULARS OF PROTECTION TO OPENINGS, ETC.

HATCHWAYS ON FREEBOARD AND SUPERSTRUCTURE DECKS.									
Freeboard Deck									
Description of Hatchway	No.1	No.2	No.3	No.4	No.5	No.6	No.7		
Dimensions of Hatchway	35-7 $\frac{1}{2}$ x 24-0	35-7 $\frac{1}{2}$ x 24-0	11-10 $\frac{1}{2}$ x 24-0	11-10 $\frac{1}{2}$ x 24-0	14-3 x 24-0	33-3 x 24-0	33-3 x 24-0		
COAMINGS { Height above Deck	34"	34	34						
{ Thickness { Sides50	.76	.50						
{ Ends44	.44	.44	Do.	Do.	Do.	Do.		
Stiffeners	2 $\frac{1}{2}$ " Dia Rod.								
Brackets, Stays	spaced 9'-0"	Do.	Do.						
HATCH BEAMS { Number	7	7	2	2	2	6	6		
{ Spacing	4'-5"		3'-11 $\frac{1}{2}$ "		4'-9"	4'-7"	4'-7"		
{ Scantling and Sketch	Web 18 $\frac{1}{2}$ x.37 Double angles 4 $\frac{1}{2}$ x3x.46	Do.	Web 20"x.38 Double angles 4 $\frac{1}{2}$ x3x.48 A	Do.	Do.	Do.	Do.		
Bearing Surface	3 $\frac{1}{2}$		3 $\frac{1}{2}$						
FORE AND AFTERS { Number									
{ Spacing									
{ Unsupported Lengths									
{ Scantling* and Sketch									
Bearing Surface									
HATCH COVERS { Material	Pine								
{ Thickness	2 $\frac{1}{2}$ "	Do.	Do.	Do.	Do.	Do.	Do.		
{ How fitted	F & A								
Bearing Surface	3 $\frac{1}{2}$ "								
Spacing of Cleats	24"	D°	D°	D°	D°	D°	D°		
Number of Tarpaulins... ..	2								

*Are wood fore and afters steel shod at all bearing surfaces? -----

Are battens and wedges efficient and in good condition? Yes

Are tarpaulins in good condition and in accordance with rule requirements? Yes

Are lashings provided in accordance with rule requirements? Yes

Particulars of any special features :—

Forecastle deck Rope Hatch 3'-0 x 2'-6" coaming 24" x 0.4" 2 $\frac{1}{2}$ " Wood covers, cleats, 2 tarpaulins and battens.

Shelter deck Forecastle - Store Hatch 3'-0" x 2'-6" coaming 9" B.A.
2½" Wood covers, cleats, one tarpaulin and battens.

Shelter deck Coal Hatch Port and Starb'd 11'-6" x 6'-0" coaming
34" x 0.40" 2½ Wood covers, cleats, 2 tarpaulins, and
battens.