

PLAN NO 30

No 636

FORGED INGOT STEEL STERN FRAME

FORGED INGOT STEEL RUDDER

SCALE 1/2" = ONE FOOT

DETAILS AS MARKED

LLOYDS TESTS

| MLO LOAD DEF. | SPEED OF SEA | AREA SQ. FT. | "D" | "A+B" |
|---------------|--------------|--------------|------|-------|
| 2 1/2" x 10" | 1 1/2 KNOTS | 14.5 | 5.57 | 58.58 |

MLO DIMENSIONS: 425'-0" x 58'-0" x 29'-9" TO UPPER DIC

Reference for RUDDER HEAD FULL DIA. 11"

FORNERS EXTRA 115"

See also plan NO 636-115"

No letter

14-17/8 FITTED BOLTS
SUPPLIED BY STEELFRAME MAKER

"H" = HEAD ON STAKE SIDE
"N" = NUT

DETAILS OF SCARPH ON RUDDER POST

SCALE 1/2" = ONE FOOT

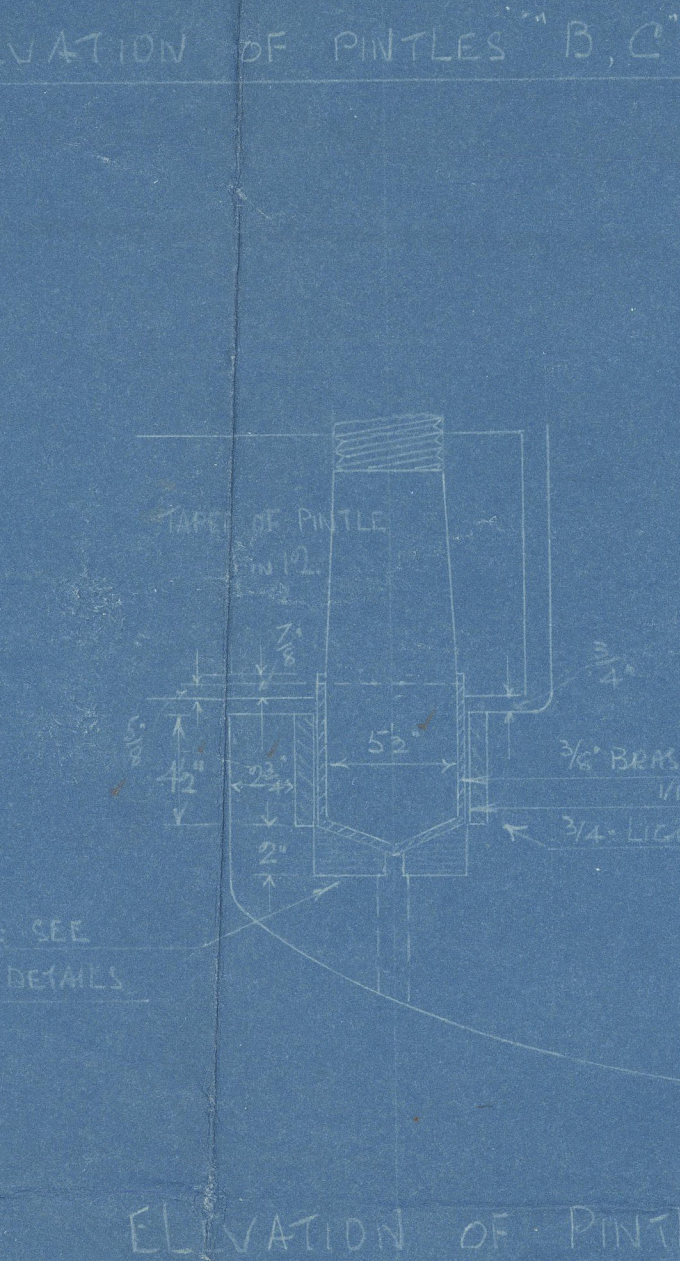
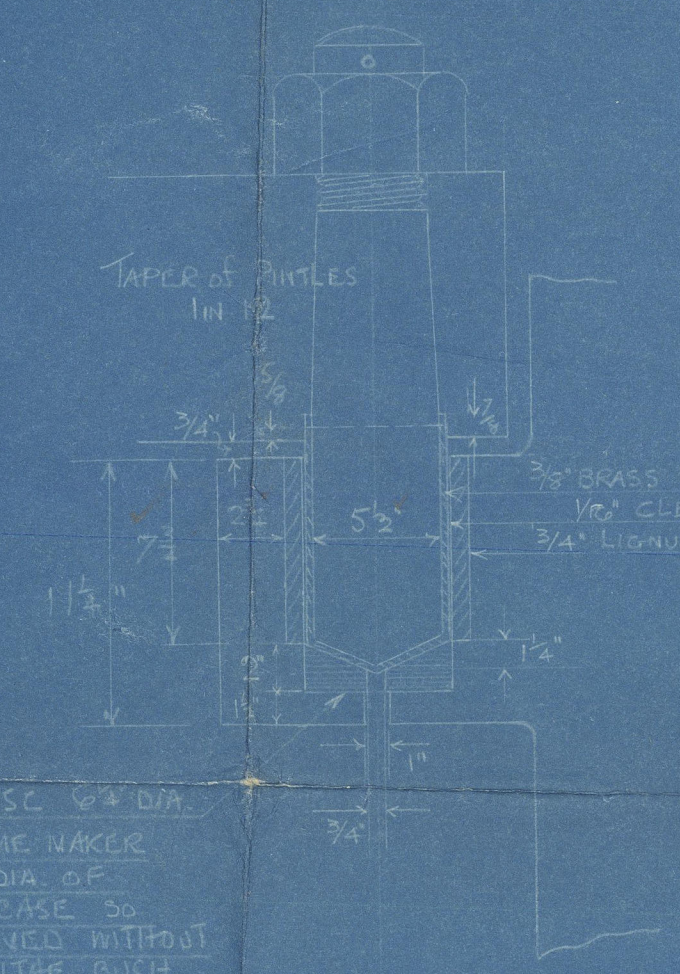
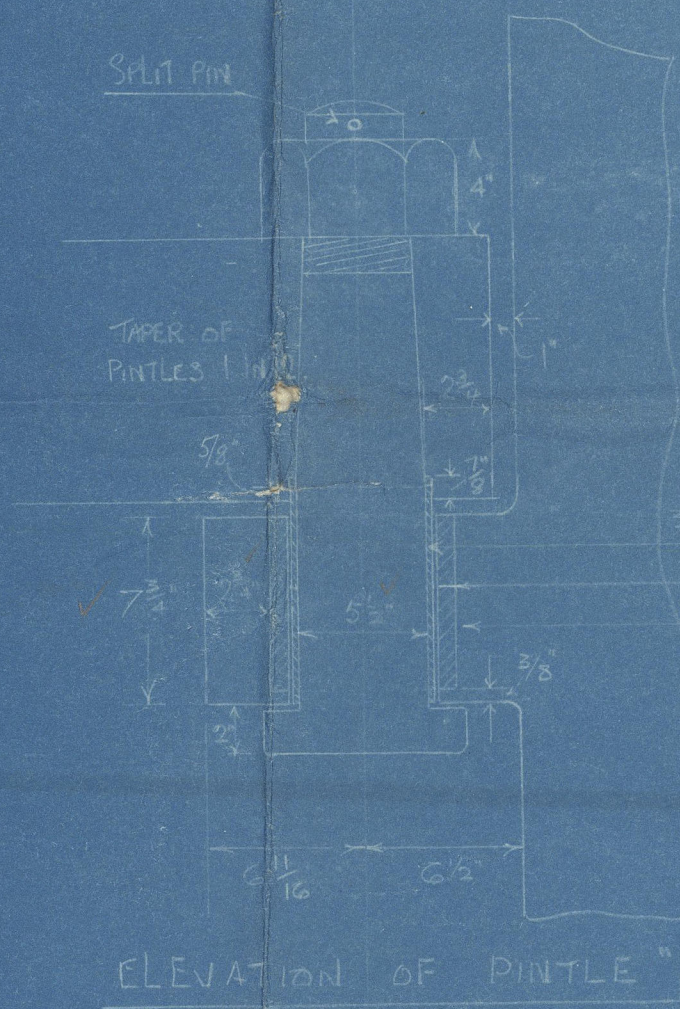
RIVETS IN STERN FRAME 1/2" DIA.
HOURS 17/16 DIA. SPACED 5 1/2" APART
2 ROWS OF RIVETS ABOVE BOSS 2 BELOW

ROUGH ROUNDED 1 1/4"
FINISHED TO 1 1/8"
RANGE 0.01 PER INCH RISING APT.

ENHANCED VIEW OF RIVET HOLES
TO BE WELL CORNER ROUNDED

DETAIL OF SCARPH ON PROPELLER POST

SCALE 1/2" = ONE FOOT



APPROVED
LLOYDS REGISTER OF SHIPPING
18.4.29

Rudder to be submitted later

Not over 1/2" to be removed
at any point

WITNESS, GLASGOW

Barday, Cusle & Co. Ltd.

No. 636

Stemframe.

"City of Barcelona"

GLASGOW REPORT No. 50356



© 2020

Lloyd's Register
Foundation

002750-002753-0002