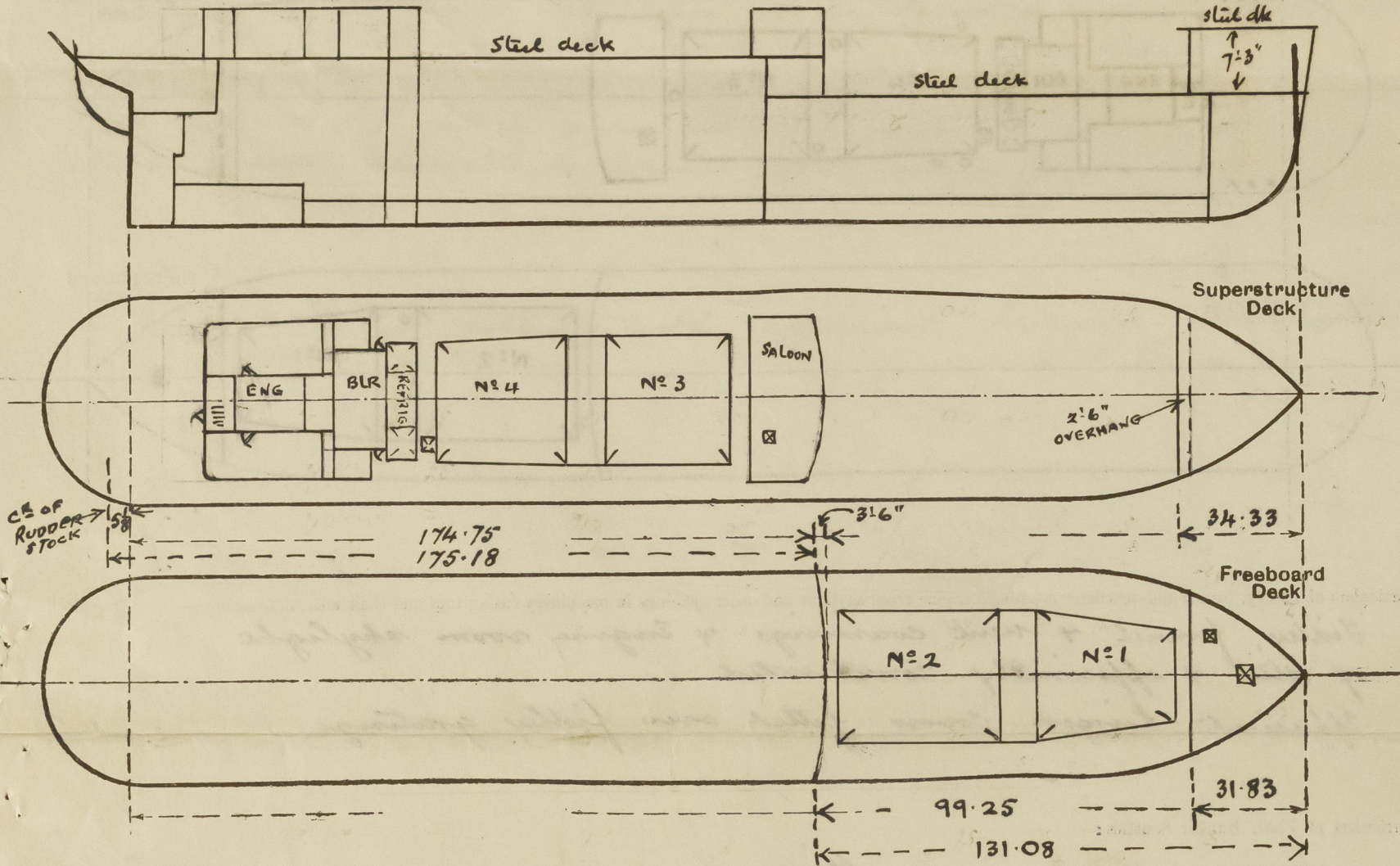


Lloyd's Register of Shipping.
SURVEYS FOR FREEBOARD. No. 18092.
(CONDITIONS OF ASSIGNMENT.)

Ship's Name "EMPIRE STRAIT" Port of Survey West Hartlepool
Official Number 160789 Surveyor's Signature W. J. Craig
Nationality and Port of Registry BRITISH WEST HARTLEPOOL Date of Survey whilst building Nov/40

Disposition and dimensions of superstructures, trunks, deckhouses and machinery casings to be inserted in the diagrams and tabular statement :-



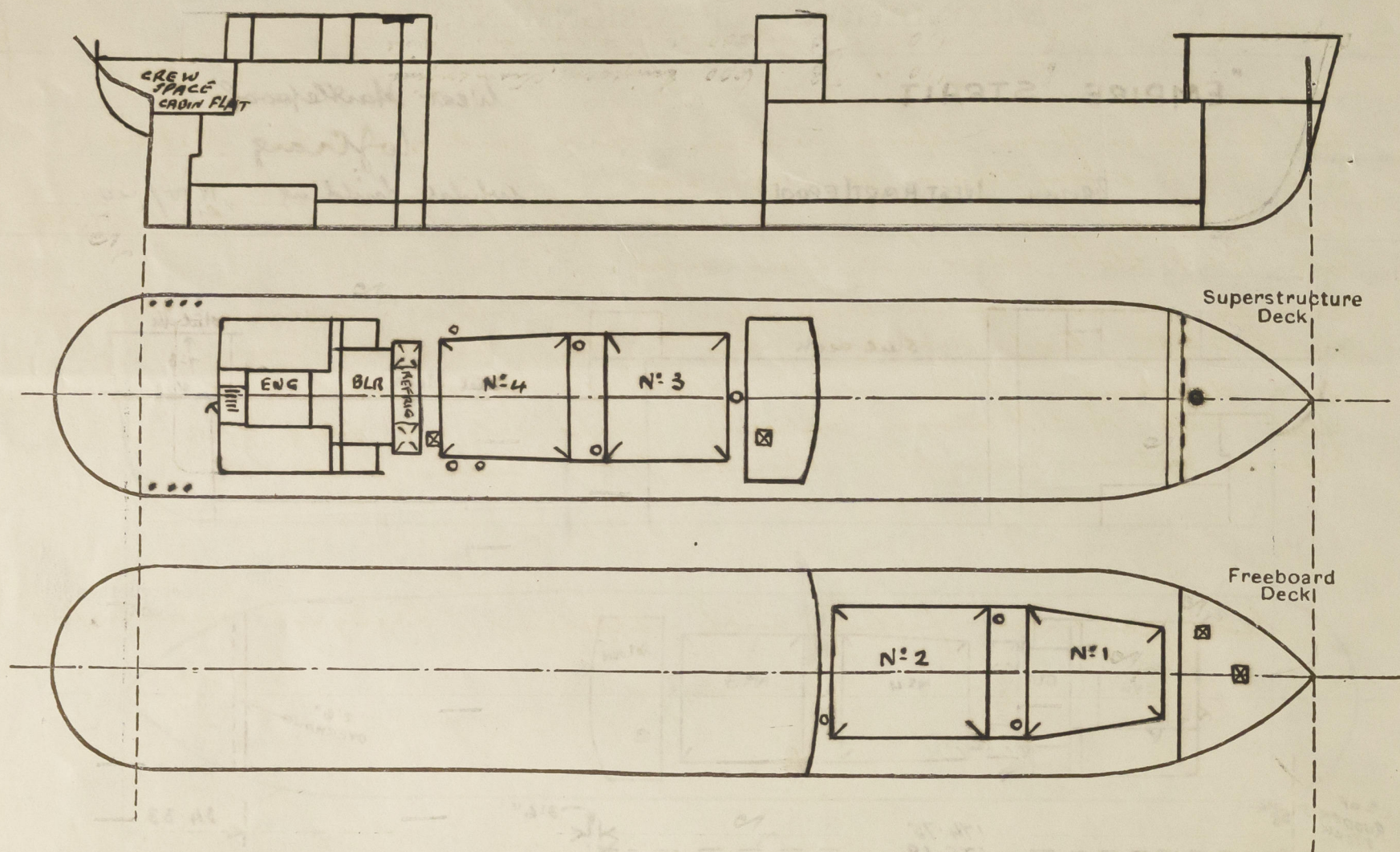
Particulars of Superstructures, Trunks, Casings, Deckhouses.								
	Coaming	Plating	Stiffeners	Spacing	End Attachments of Stiffeners	Size of Openings	Height of Sills	Height of Casings
Poop Bulkhead				✓				
Raised Quarter Deck Bulkhead40	.40	4 x 2 1/2 x 5/16 angle 4 diaphragms	24"	none	none	none	4'-9" ✓
Bridge, After Bulkhead				✓				
Bridge, Forward Bulkhead				✓				
Forecastle Bulkhead28	.28	4 x 3 x .30 A	30 1/2"	none	2 at 4'-1" x 3'-1" 2 at 4'-6" x 2'-0"	18"	7'-3" ✓
Trunk, Aft				✓				
Trunk, Forward				✓				
Exposed Machinery Casings on Freeboard or Raised Quarter Decks34	.30	5 x 3 x 3/8 A	30"	none	2 at 5'-0" x 2'-0"	21"	7'-9" ✓
Exposed Machinery Casings on Superstructure Decks				✓				
Machinery Casings within Superstructures not fitted with Class I Closing Appliances				✓				
Deckhouses on Flush Deck Ships ...				✓				

Particulars of Closing Appliances (state if capable of being manipulated from both sides).

Poop Bulkhead	✓
Raised Quarter Deck Bulkhead ...	No openings. ✓
Bridge, After Bulkhead	✓
Bridge, Forward Bulkhead	✓
Forecastle Bulkhead	✓
Exposed Machinery Casings on Freeboard or Raised Quarter Decks ...	Hook bolted plates Hinged steel doors operated from both sides
Exposed Machinery Casings on Superstructure Decks	Hinged steel doors operated from both sides
Machinery Casings within Superstructures not fitted with Class I Closing Appliances	✓
Deckhouses on Flush Deck Ships ...	✓

PARTICULARS OF PROTECTION TO OPENINGS, ETC.

The following diagrams should be used to indicate the positions of cargo and coaling hatchways, gangway, cargo and coaling ports, ventilators, companionways, etc., which would affect the seaworthiness of the ship:—



Particulars of fiddle, funnel and ventilator coamings, engine room skylight and other openings in machinery casing tops and their means of closing:—

Fiddle, funnel & vent coamings & Engine room skylight of steel & efficiently constructed. Efficient hinged covers fitted over fiddle gratings.

Particulars of Flush Bunker Scuttles:—

None ✓

Particulars of Companionways:—

Companionway to cabin flat aft. incorporated in deckhouse. Hinged steel door 5'0" x 2'0" operated from both sides. Sill 20"

Particulars of Ventilators in exposed positions on freeboard and superstructure decks:—

Forecastle deck:— 1-15" vent to hold, coaming 36" x 36" ✓
Upper deck:— 2-15" " " " 36" x 36" ✓
1-15" " " " 12'9" x 36" supported ✓
R.Q. deck:— 1-15" " " " 36" x 36" ✓
2-15" " " " 36" x 36" ✓
3-15" " " " 36" x 36" ✓
7-6" gooseneck vents to accommodation aft 18" high ✓
Wood plugs + Canvas covers supplied ✓

Particulars of Air Pipes in exposed positions on freeboard, raised quarter, or superstructure decks:—

Forecastle:— 1-4" air pipe to fore peak 18" high ✓
Upper deck:— 2-4" " " to No 1 D.B. tank 36" " ✓
2-5" " " " N° 2 " 36" " ✓
R.Q. deck:— 2-5" " " " deep tank 30" " ✓
2-5" " " " N° 2 D.B. tank 30" " ✓
4-5" " " " N° 3 " 30" " ✓
2-2 1/2" " " " N° 4 " 30" " ✓
2-2 1/2" " " " N° 5 " 30" " ✓
1-4" " " " aft peak 30" " ✓
Closing appliances supplied ✓

B.T. COPY

Empire Strait.

Particulars of Gangway Cargo and Coaling Ports:—

None ✓

Particulars of Scuppers and Sanitary Discharge Pipes:—

Soil discharges from Saloon deckhouse lead overboard below R.Q. dk with M.C.I. storm valves at ship's side. ✓
Soil discharges from Engineer's deckhouse aft lead overboard below R.Q. dk. with M.C.I. storm valves at ship's side. ✓
Scuppers & wash basin waste pipes etc in Saloon & Engineer's deckhouses on R.Q. dk lead overboard below R.Q. dk, no storm valves.
Sink discharges from cabin flat aft leads overboard above cabin flat with M.C.I. storm valve at ship's side & plug cock above storm valve accessible & operated from cabin flat. ✓

Particulars of Side Scuttles:—

Side scuttles fitted with efficient hinged deadlights

Vertical distance of Sill of lowest Side Scuttle above top of keel

26'3 3/4" ✓

Particulars of Guard Rails:—

Forecastle:— 2 tier rails 3'0" high with stanchions 4'6" apart. ✓

Particulars of Gangways, Lifelines, etc.:—

Lifelines available in forward well, and along raised Quarter deck. ✓

Particulars of Freeing Arrangements.

	Length of Bulwark	Height of Bulwark	Size of Freeing Ports	Number each side	Area each side	Rule area each side
After Well ...	175.18 174.78	3'6"	12'0" x 8" 6'0" x 8"	4 2	32.0 8.0	35.03
Forward Well ...	99.25 92	4'0"	12'0" x 8"	3	24.0	18.88

State position of each freeing port ... (After Well:— 22'0", 46'0", 64'0", 88'0", 106'0", 148'0" from B. front. (F. and A. position and height above deck edge) Forward Well:— 21'3", 48'3", 69'3" from 7th front. Sills 11" up.

State whether the freeing ports are fitted with shutters, bars, or rails, and give particulars of such:—

None

Additional area where sheer is less than standard.



© 2020

Lloyd's Register Foundation

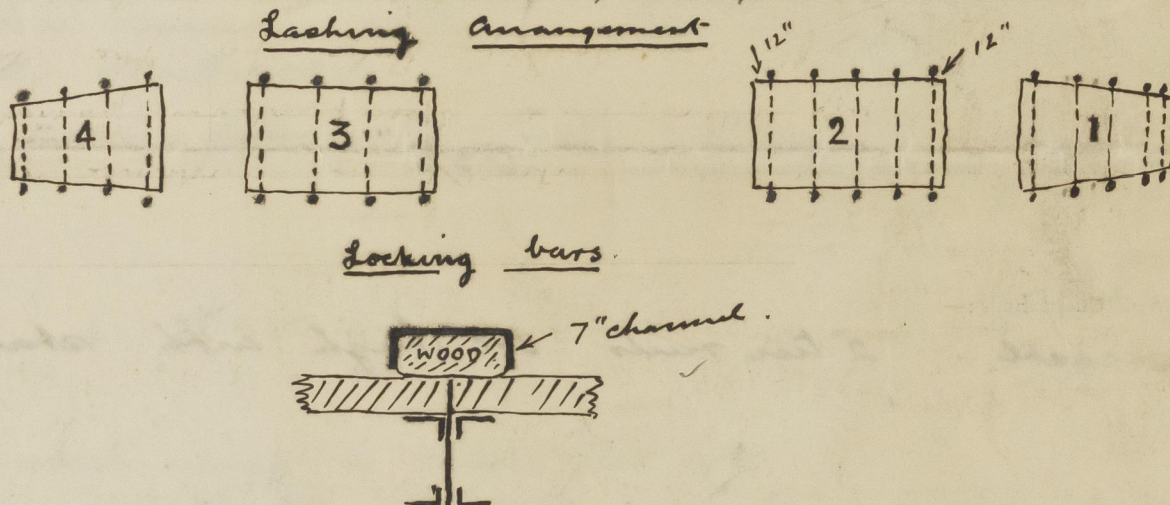
0208 212

PARTICULARS OF PROTECTION TO OPENINGS, ETC.

HATCHWAYS ON FREEBOARD AND SUPERSTRUCTURE DECKS.										
← UPPER DECK ← R.G. dk →					← UPPER D' →		← R.G. dk →		Canning Tr. R.G. dk	
Description of Hatchway	No 1	No 2	No 3	No 4	20 fore Peak	escape hatch on upper deck insid. Fld. from N. 1. Hold	escape hatch on R.G. dk. from Rd. Jam. in	Deck tank hatch inside Schoon house	Coal hatch	escape hatch on deck bet. N. 2 & 4 hatchway from aft hold 2'0" x 11'7"
Dimensions of Hatchway	34'9" x 22'5" / 28'0"	42'9" x 28'5"	33'9" x 28'5"	35'9" x 24'9" / 28'4"	3'0" x 3'0"	2'0" x 2'0"	2'3" x 2'6"	2'0" x 2'0"	2'0" x 5'0"	
COAMINGS	<div> <div>Height above Deck</div> <div>Thicknes</div> <div>Stiffeners</div> <div>Brackets, Stays</div> </div> <div> <div>Sides</div> <div>Ends</div> </div>									
HATCH BEAMS	<div> <div>Number</div> <div>Spacing</div> <div>Scantling and Sketch</div> </div> <div> <div>Bearing Surface</div> </div>									
FORE AND AFTERS	<div> <div>Number</div> <div>Spacing</div> <div>Unsupported Lengths</div> <div>Scantling* and Sketch</div> </div> <div> <div>Bearing Surface</div> </div>									
HATCH COVERS	<div> <div>Material</div> <div>Thickness</div> <div>How fitted</div> <div>Bearing Surface</div> </div>									
Spacing of Cleats	24	24	24	24	24	-	-	-	24	-
Number of Tarpaulins	2	2	2	2	2	-	-	-	2	-

*Are wood fore and afters steel shod at all bearing surfaces? yes
 Are battens and wedges efficient and in good condition? yes
 Are tarpaulins in good condition and in accordance with rule requirements?
 Are lashings provided in accordance with rule requirements? 7" channel bars fitted as shown secured tight at hatch sides in addition to ordinary locking bars.

Particulars of any special features:—



Endorsement at first survey and at surveys for renewal of Certificate:—

The fittings and appliances are in accordance with the particulars shown on this form (or as now modified) and are in good condition.