

## CONVERSION OF SINGLE PLATE RUDDER TO DOUBLE PLATE STREAMLINED RUDDER.

AREA OF RUDDER	-	$2135 \times 5979$	=	1276752 FT
C OF G AFT OF 4 PINTLES	-	3516 FT		
NUMERAL	-	44889		
SPEED	-	11 KNOTS		
DIA OF STOCK	-	10'		

TO CLASP: DC.

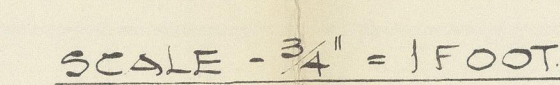
INTERNAL SURFACES OF BUDDER TO BE GIVEN PROTECTIVE COATING BY FILLING WITH ALUMINUM OIL OR BITUMINOUS SOLUTION AND DRAINING OR BY PARTLY FILLING AND TURNING BUDDER.

IT IS RECOMMENDED THAT THE CLOSING SIDE PLATE OF BUDDER BE SECURED BY TAP BOLTS AS SHOWN IN DETAIL. THE ALTERNATIVE METHOD USING SLOT WELD, CAN HOWEVER BE USED IF NECESSARY.

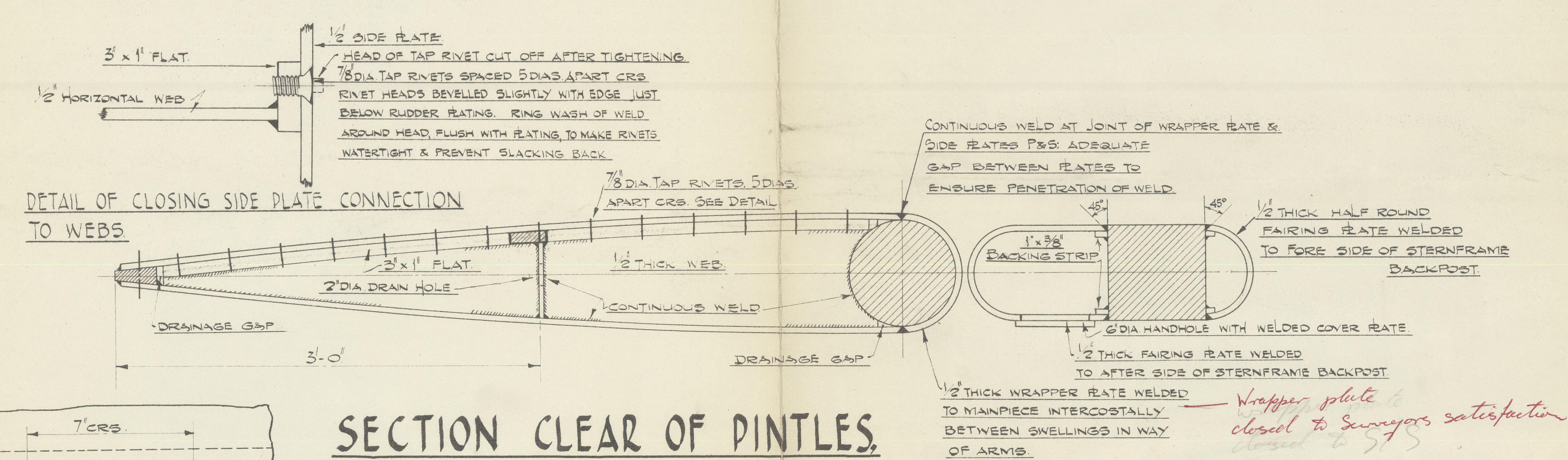
PAIRING PLATES ON EITHER SIDE OF STIFFENING - THE PORTION APPROXIMATELY 4" LONG IMMEDIATELY ABOVE EACH PINTLE MUST BE CUT AWAY IN ORDER TO UNLOAD BUDDER AND TO BE REINFORCED BACK IN POSITION AFTER BUDDER IS RESHIPPED.

BURN OR CUT AWAY THE COVER PLATES OVER THE HANDHOLES  
IN THE STERNFRAME FAIRING PLATES, BELOW EACH PINTLE  
AFTER INSPECTION OF BUSHES REWELD COVER PLATES IN POSITION.

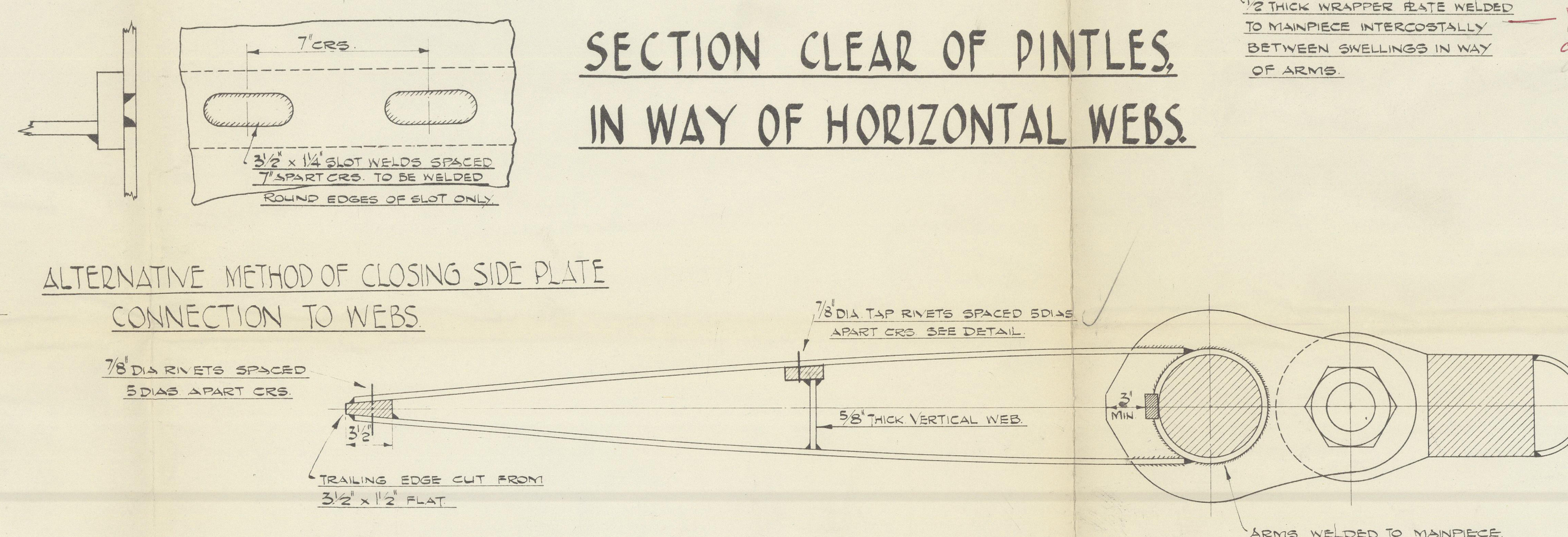
UNCOUPLE RUDDER STOCK AND TURN STOCK AND RUDDER IN OPPOSITE DIRECTIONS UNTIL THE TWO PAINTS ARE CLEAR OF EACH OTHER. BURN OR CUT AWAY THE SHORT PORTIONS OF STERNFRAME PAINTS. PLANT IMMEDIATELY ABOVE BARGE BUILT. BURN OR CUT AWAY 8' x 2' x 2" M.S. SLAB WELDED TO TOP OF STERNFRAME. LIFT RUDDER UNTIL PAINTS ARE CLEAR OF STERNFRAME GUIDES. WITHDRAW RUDDER. PAINTS CAN THEN BE REMOVED FROM RUDDER IF REQUIRED.



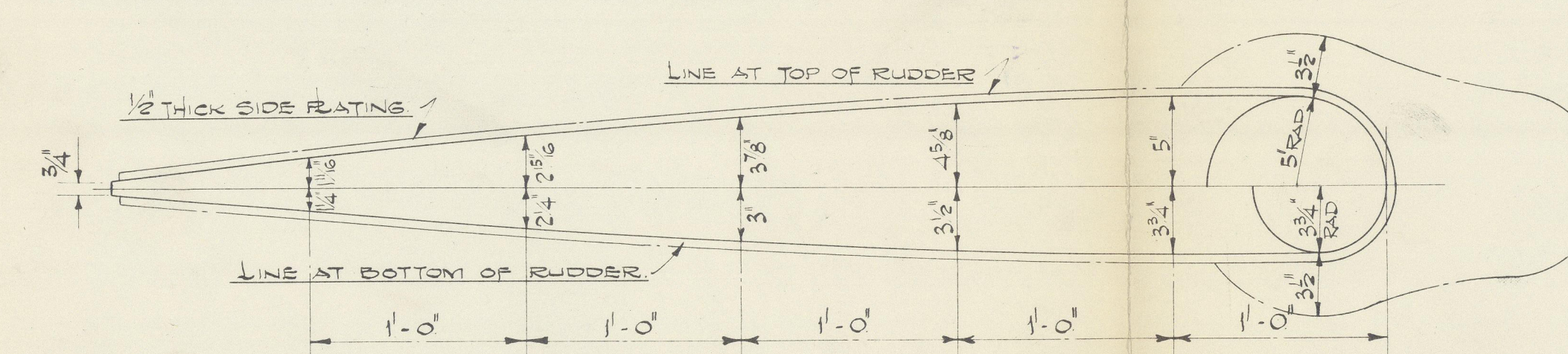
PLAN VIEW ON TOP PLATE.



SECTION CLEAR OF PINTLES.  
IN WAY OF HORIZONTAL WEBS.

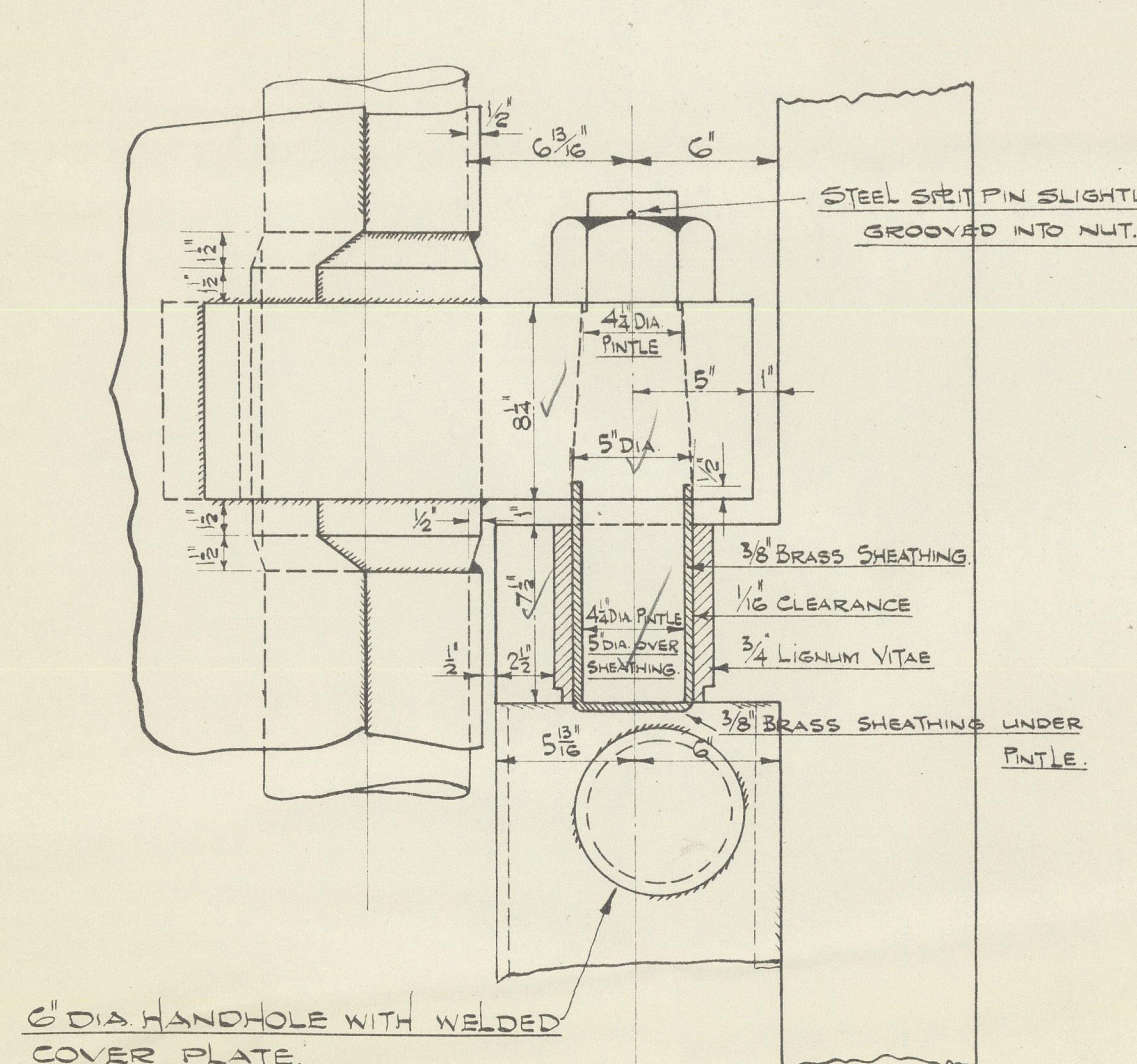


SECTION IN WAY OF PINTLES.

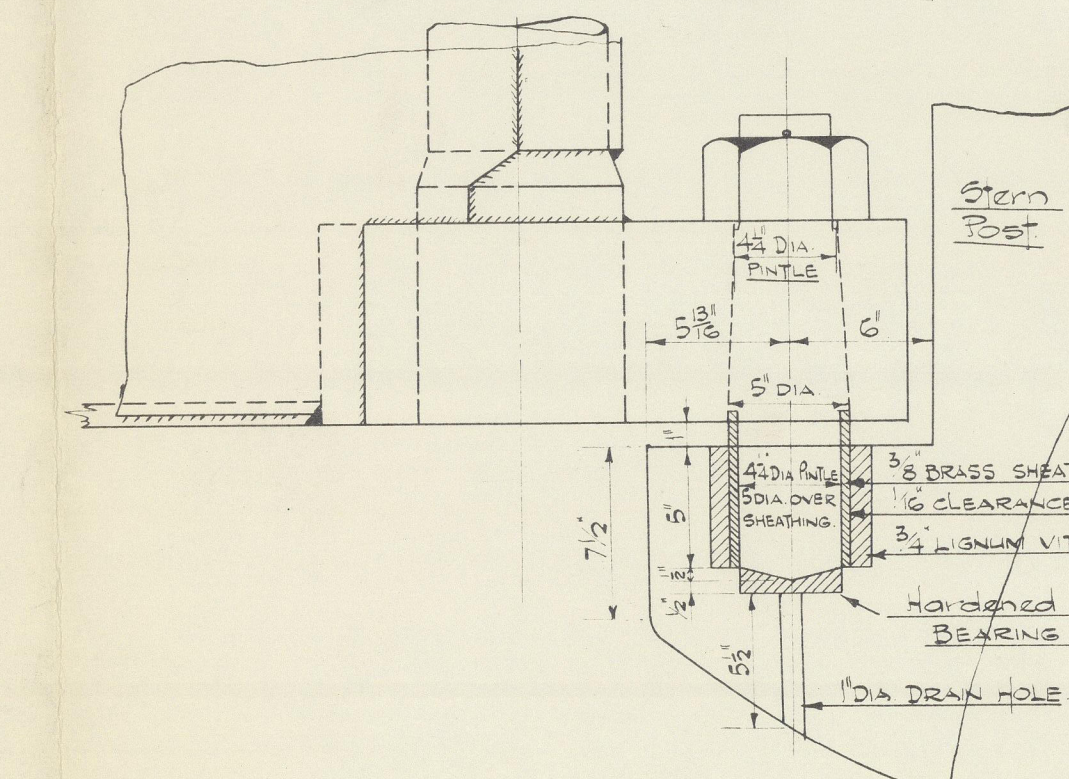


### RUDDER OFFSETS.

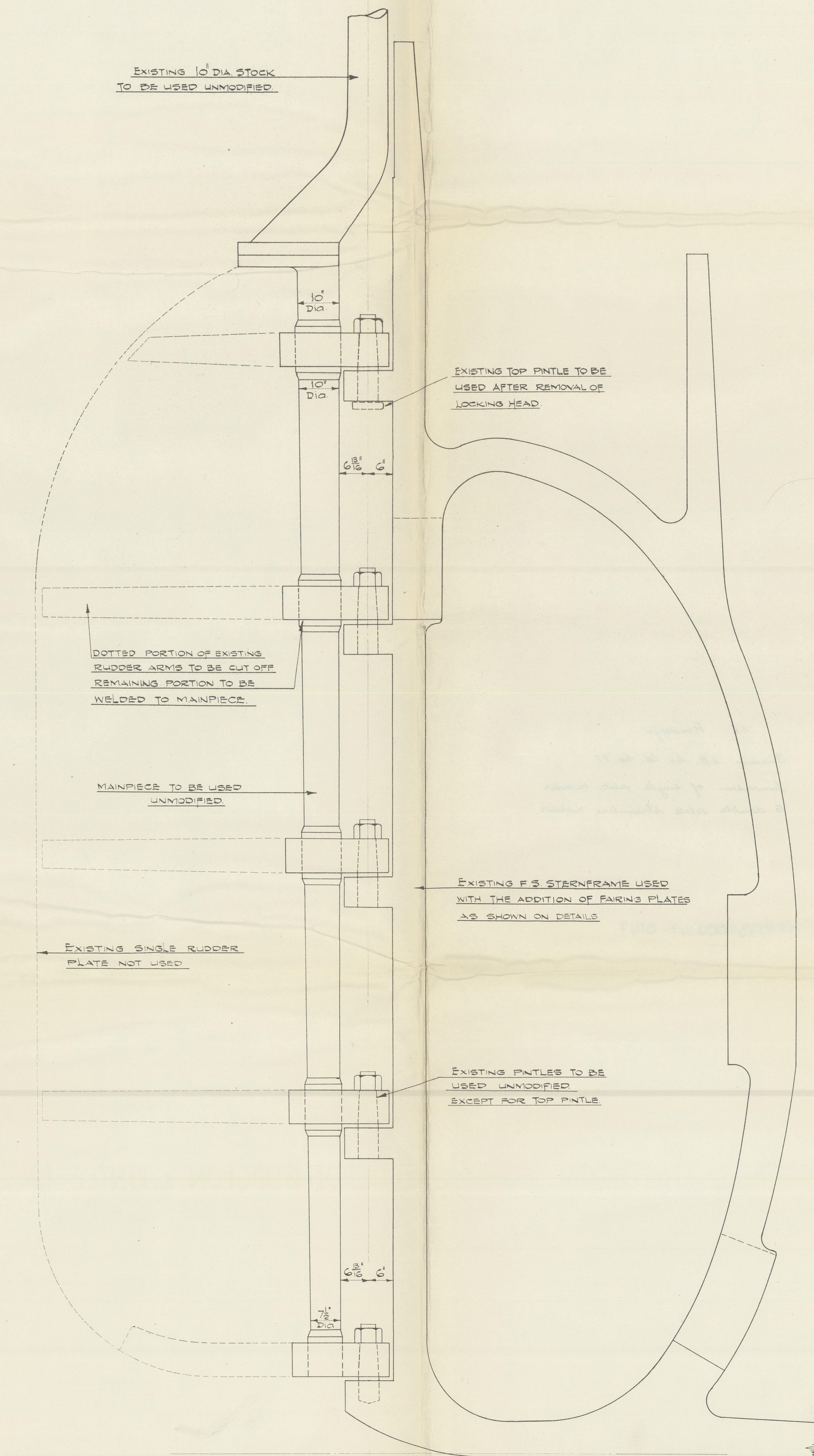
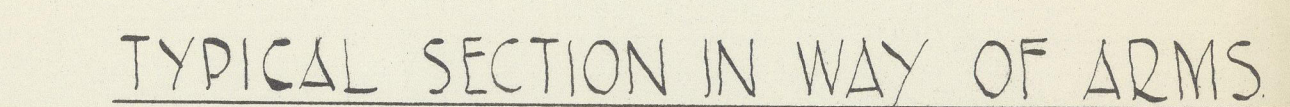
SCALE OF SECTIONS -  $1\frac{1}{2}$  : 1 FOOT



SCALE -  $1\frac{1}{2}$ " = 1 FOOT



SCALE - 1 1/2" = 1 FOOT



### MODIFICATIONS REQUIRED TO EXISTING RUDDER PARTS.

T./O. 5370



S.S. "Amudarya"

Furness S.B. Co. Ltd. No. 77.

Conversion of single plate reader  
to double plate streamline reader.

002743-002749-0149



© 2020

Lloyd's Register  
Foundation