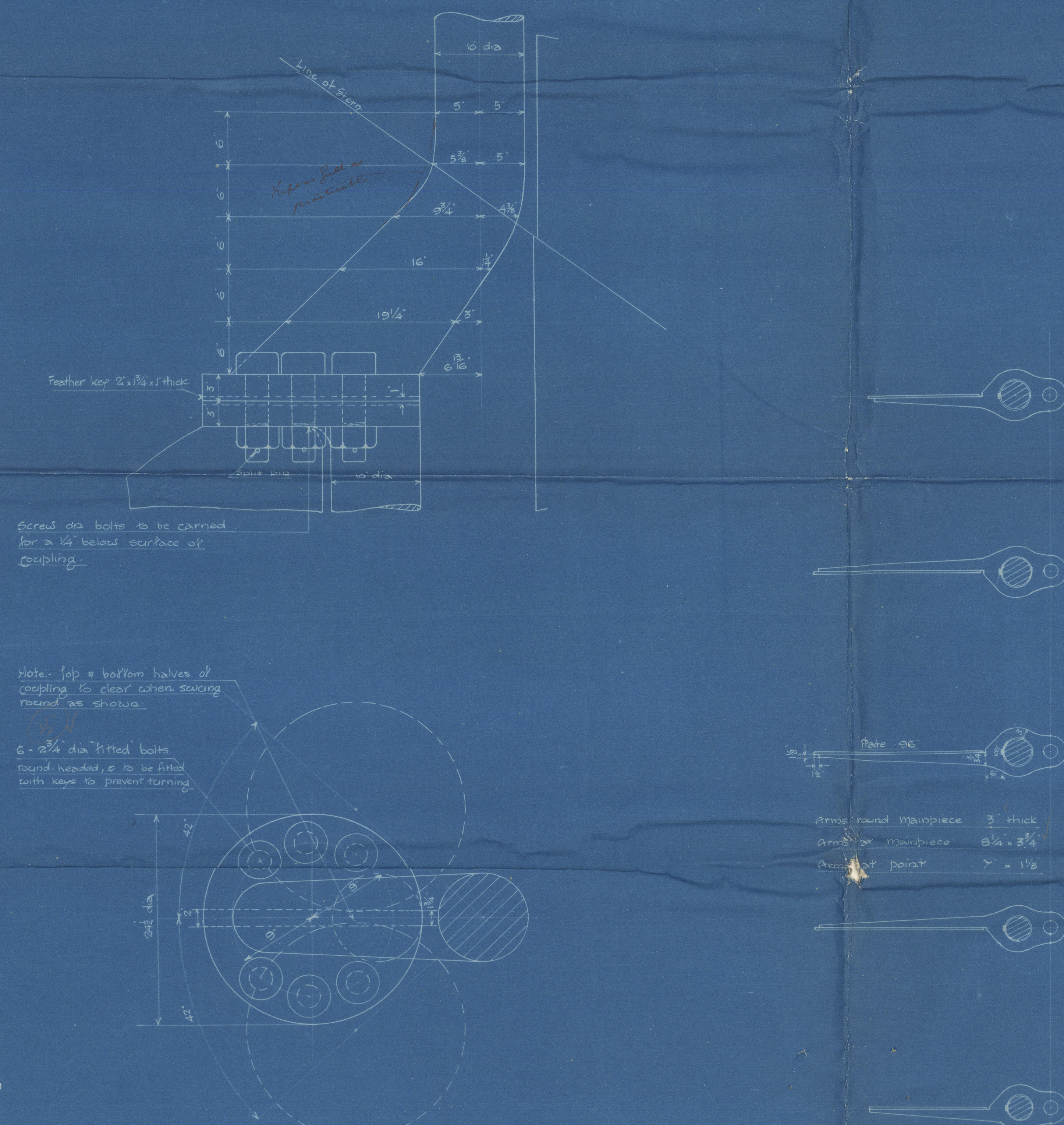


No 77 SHIP.
RUDDER FRAME.
 FORGING.

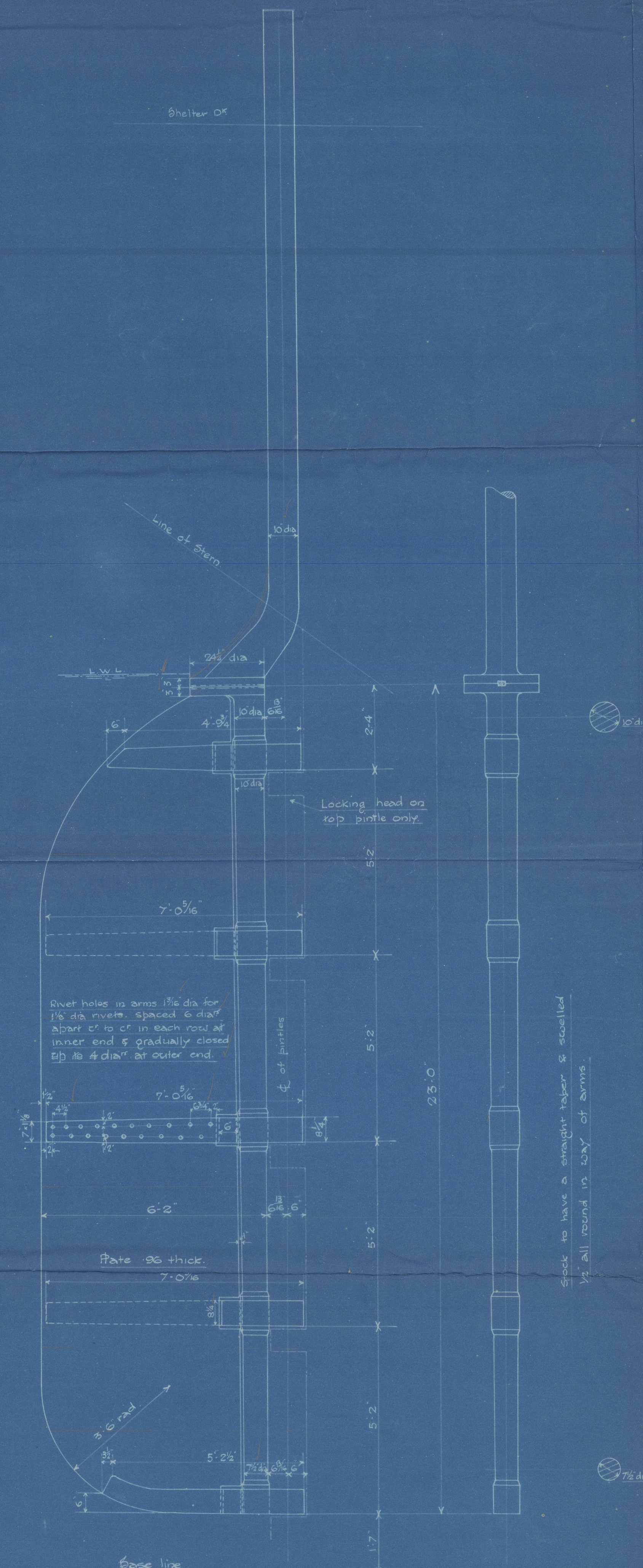
Arms keyed & secured on to mainpiece
 TO PASS S.C. SURVEY.

Area of Rudder (immersed) from back
 of Rudder Plate to ϕ of pintles = 144 sq ft.
 c.o.g. abaft ϕ of pintles = 3.21 ft.
 Speed = 13 knots.
 Dia of Rudder Head per rule = 10" dia.

Area of Rudder (immersed) from back
 of Rudder Plate to fore side of mainpiece = 130.75 sq ft.



Detail of Coupling & Bottom of Rudder Head
 Scale 1 1/2" = 1 Foot

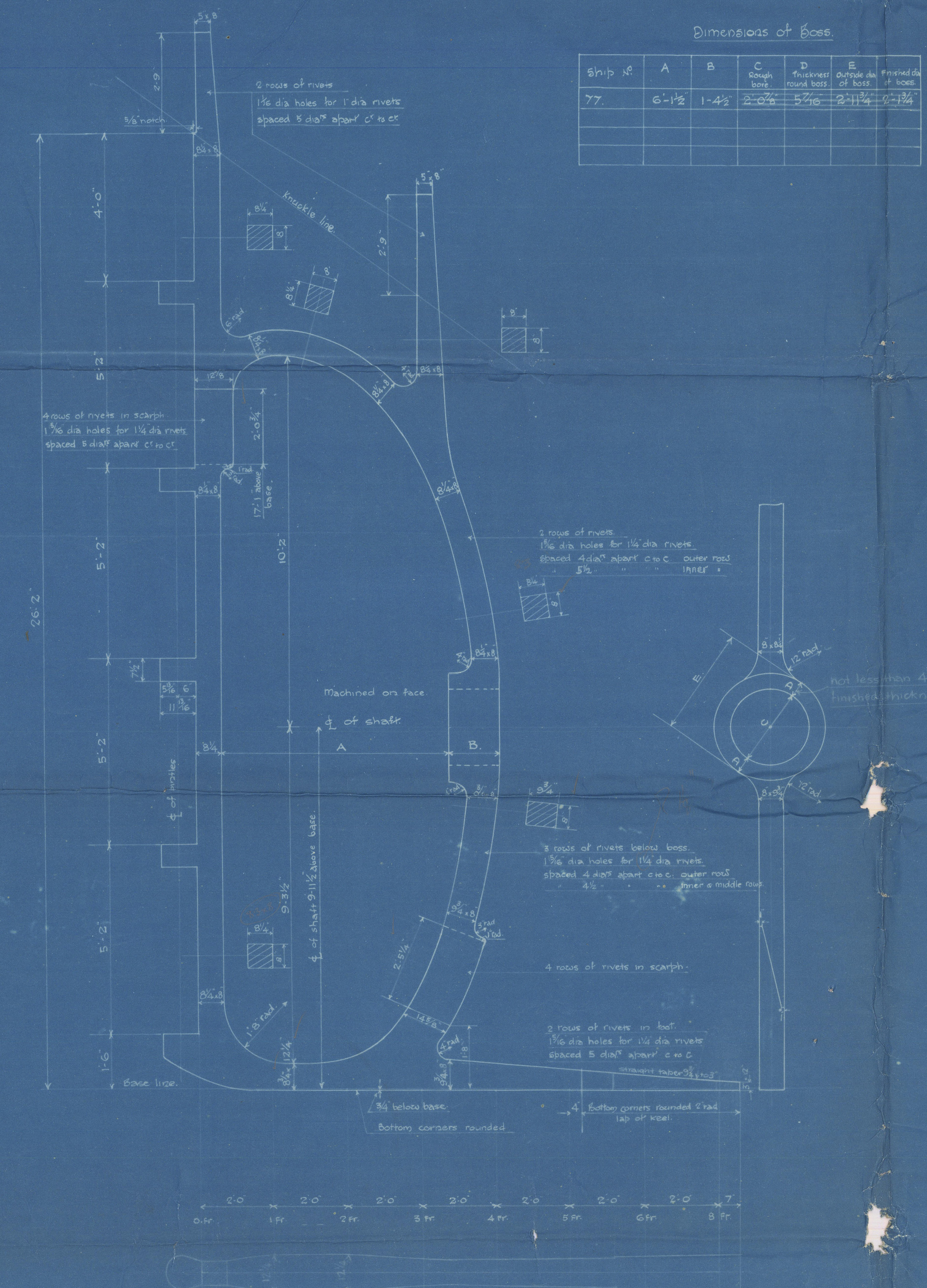


Scale 1 1/2" = 1 Foot

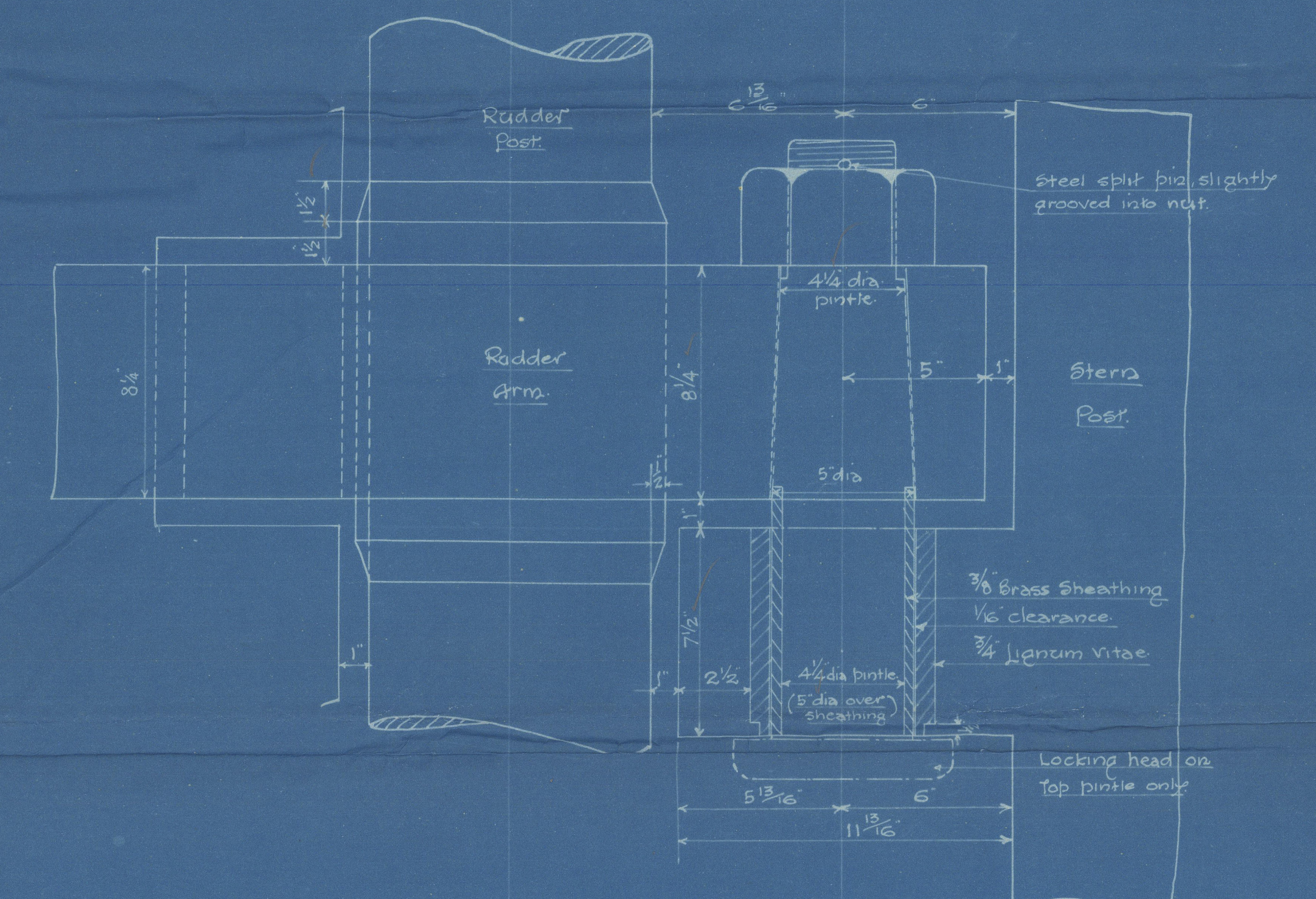
No 77 SHIP.
STERN FRAME.
 FORGING
 TO PASS S.C. SURVEY.

Dimensions 41'0" B.P. x 53'6" M.H. x 28'4 1/2" M.D. to U.D., 36'4 1/2" M.D. to S.D.
 16 Class S.S. Shelter D^o with Freeboard.

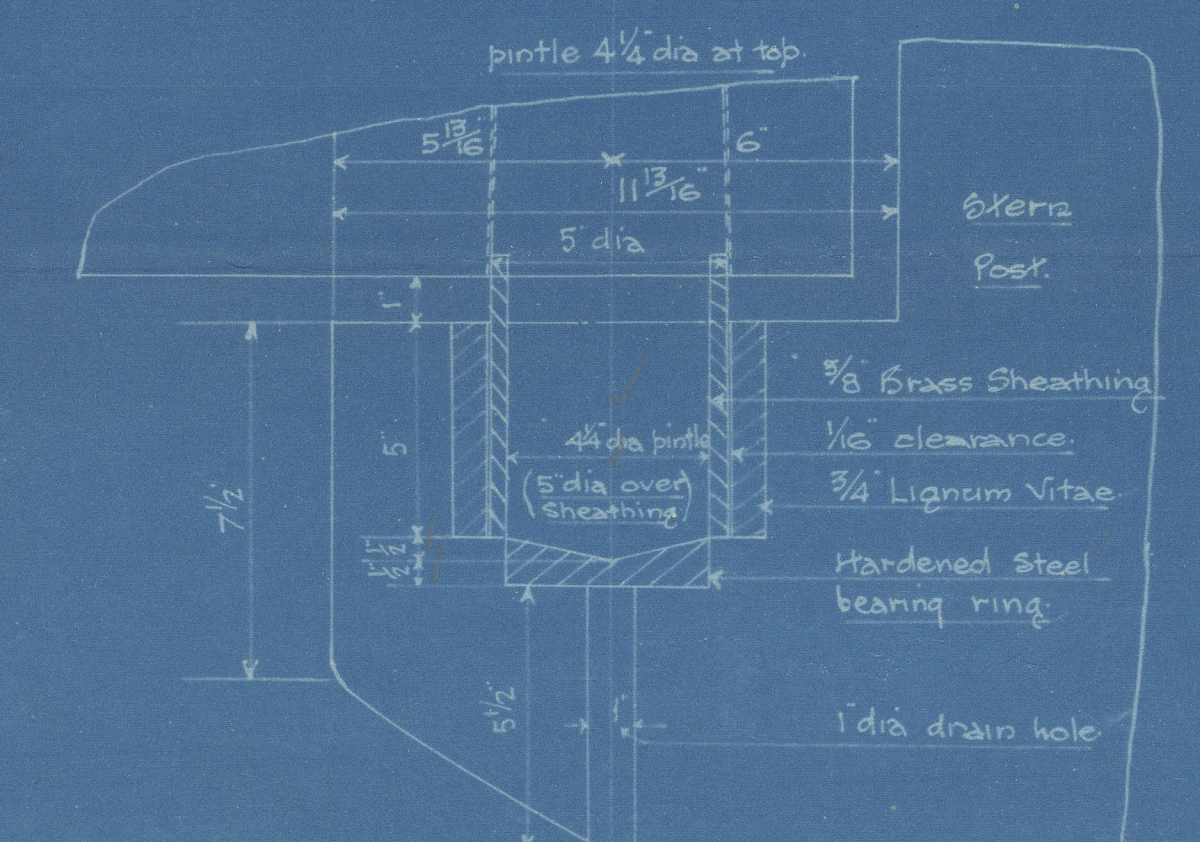
Ship No.	A	B	C	D	E
77	6'-1 1/2"	1'-4 1/2"	2'-0 1/2"	5'-0"	2'-11 1/2"



Scale 1 1/2" = 1 Foot



Detail of Gudgeon & Pintle
 Scale 3" = 1 Foot



Detail of Bottom Gudgeon
 Scale 3" = 1 Foot

127 MAY 1901

Approved
 S. A. 210

AMUDARYA

(L.R. SYSTEM)

S. B. Co.
77
Furness S.B. Co's No. 77.

410 x 53'-6" x 28'-4"

Rudder + Stemframe

No. 8

© 2020

002743-002749-0148

Lloyd's Register
Foundation