

**Nº 527.**  
**PROFILE & DECK PLAN.**

DIMENSIONS AS PER RULE.

LENGTH B.P. — 400.00'

BREADTH M.L.D. — 53.29'

DEPTH M.L.D. — 35.87'

CLASS 100 A.I. WITH FREEBOARD

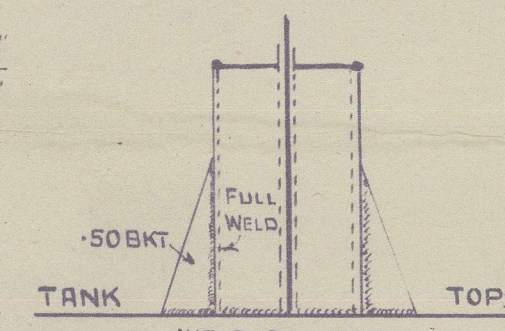
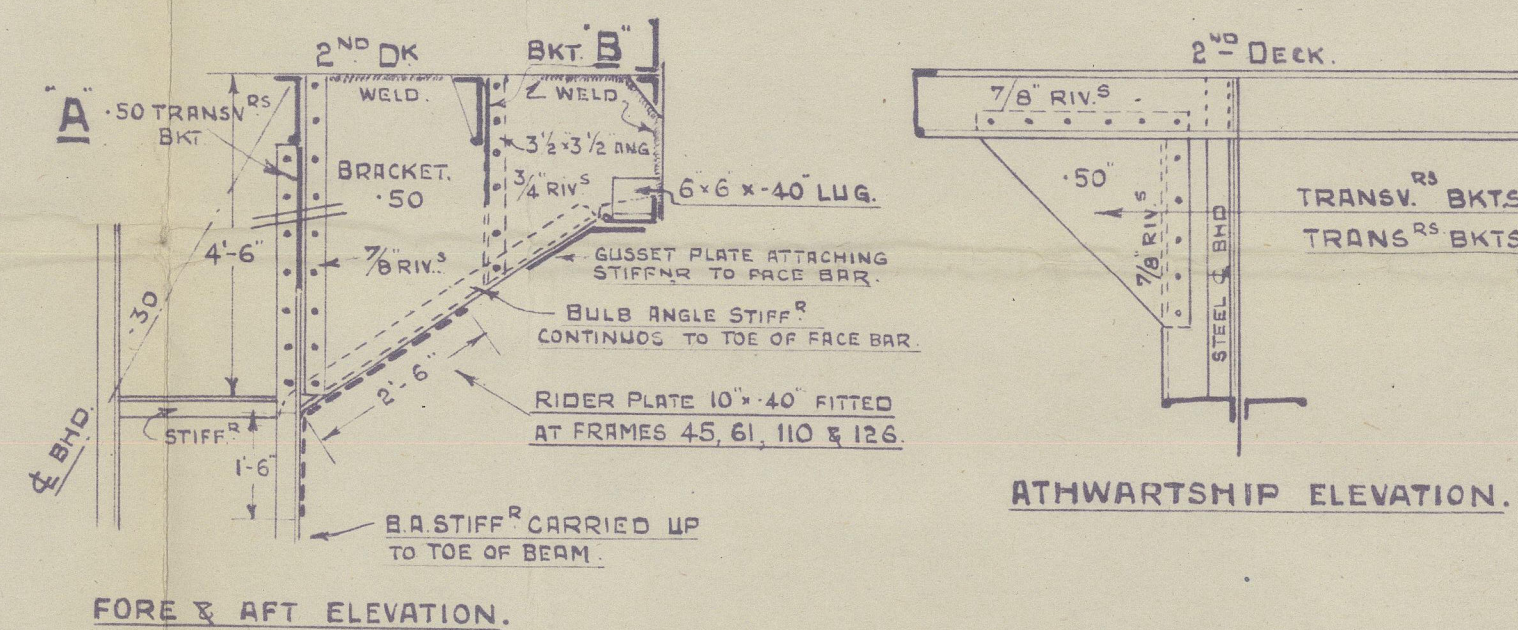
SCALE 1/8" = 1 FOOT.

WITH THE SCANTLINGS AMENDED SUITABLE  
FOR A DRAFT OF 18' IN EXCESS OF THAT  
CORRESPONDING TO THE FREEBOARD WHICH COULD  
BE ASSIGNED TO THE VESSEL WITH A TONNAGE OPENING.

PARTICULARS FOR FREEBOARD.	
96% OF LENGTH INCLUDING CRUISER STERN	396.9'
LENGTH BETWEEN PERPENDICULARS	400.00
BREADTH MOULDED (53'-3")	53.29
DEPTH MOULDED TO 2 <sup>ND</sup> DECK (27'-4")	27.38
85% OF MOULDED DEPTH (23'-3")	23.28
MOULDED DISPLACEMENT @ 85% OF MLD DEPTH	10640 T
COEFF <sup>1</sup> OF FINENESS	.765
APPROXIMATE TONS PER INCH	43.5
ROUND OF BEAM	12 1/2"
SCANTLINGS: CLASS 100 A.I. WITH FREEBOARD. SEE NOTE.	
SHEER - AFTER SIDE OF STERN POST = 4'-2" SHEER CURVE PARABOLIC	
FORE PERPENDICULAR = 9'-0"	
TWEEN DECKS 6'-6" HIGH - STANDARD 7'-6"	

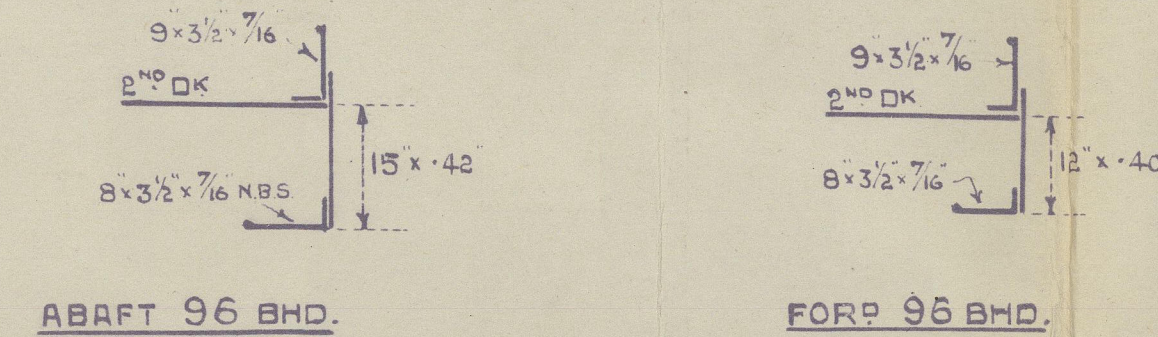
NOTE: SHEER AT FORE END  
SPRING UP AN EXTRA  
10' OVER THE ANGLE  
GIVING 9'-10" AT FORE DECK

CENTRE LINE BULKHEAD IN HOLDS.  
DETAILS OF HATCH END BRACKETS & CONNECTIONS TO  
DOUBLE BULB ANGLE STIFFENERS AT ALL 2<sup>ND</sup> DECK HATCH ENDS.  
SCALE 3/8" = 1 FOOT.

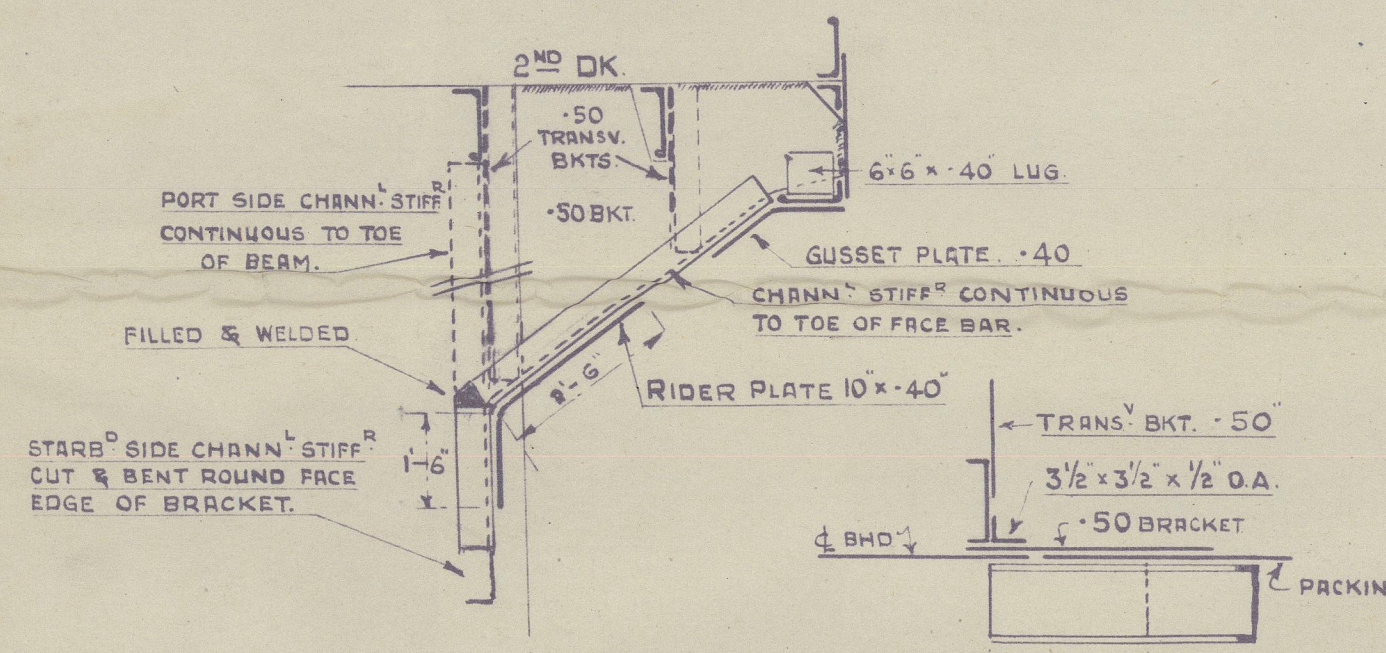


4 BMD STIFFS AT H.E. BEAMS BRACKETED TOP AND BOTTOM  
BEAMS LUGGED TO 4 BMD WHERE NO STIFFENERS.

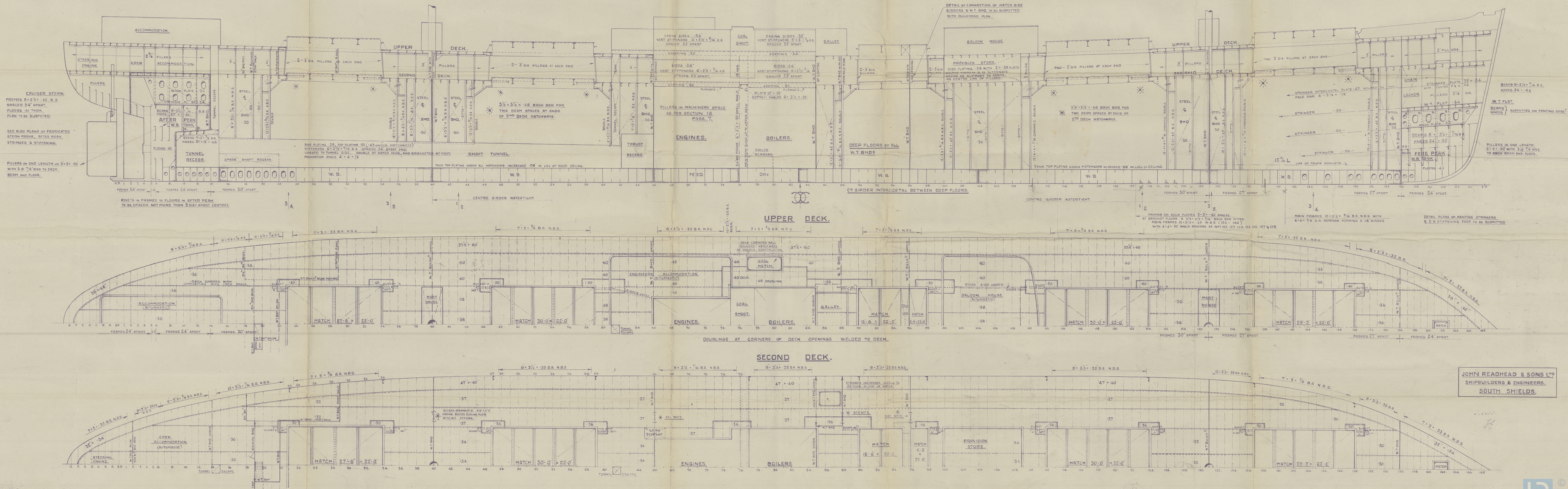
DETAIL OF NO.3 HATCH SIDE GIRDERS.  
(2<sup>ND</sup> DECK.)



CENTRE LINE BULKHEAD IN HOLDS.  
DETAILS OF HATCH END BRACKETS & CONNECTIONS  
TO DOUBLE CHANNEL STIFFS ON FRAMES 110 & 126.



MASTS, WINCHES, WINDLASS, STEERING GEAR ETC.  
SUPPORTED TO SURVEYORS' SATISFACTION.



JOHN READHEAD & SONS LTD  
SHIPBUILDERS & ENGINEERS.  
SOUTH SHIELDS.



L. R. Profile & Neck

J. Headhead & Son

N<sup>o</sup>. 527 reference N<sup>o</sup>. 529. ✓

REF EMPIRE GREY NOW BURHILL



© 2020

Lloyd's Register  
Foundation

002743-002749-0008

529.