

SHIP No 176

STERN & RUDDER FRAMES

CLASS B.S. *

SCALE:- $\frac{3}{4}" = 1 \text{ FOOT}$

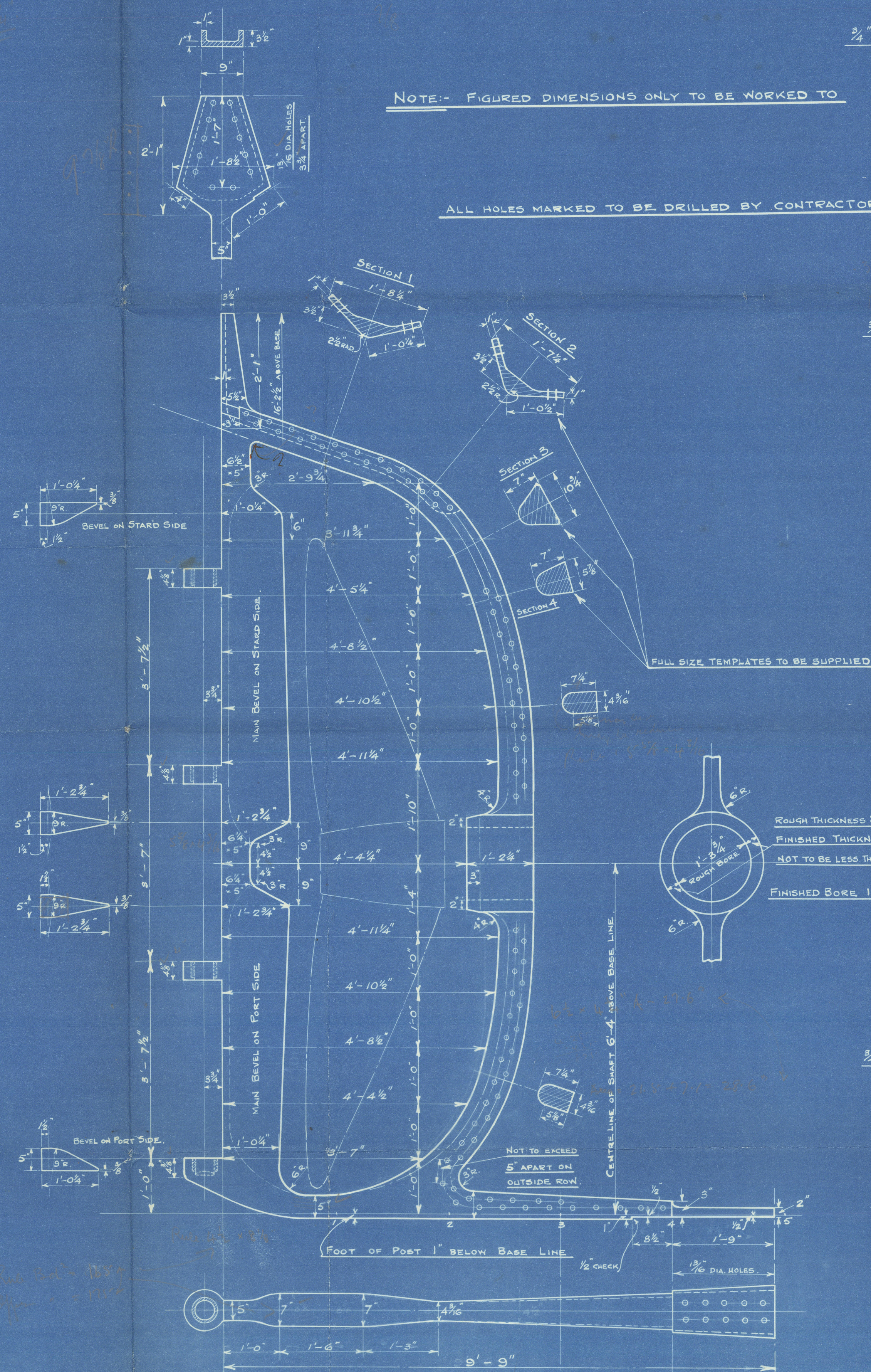
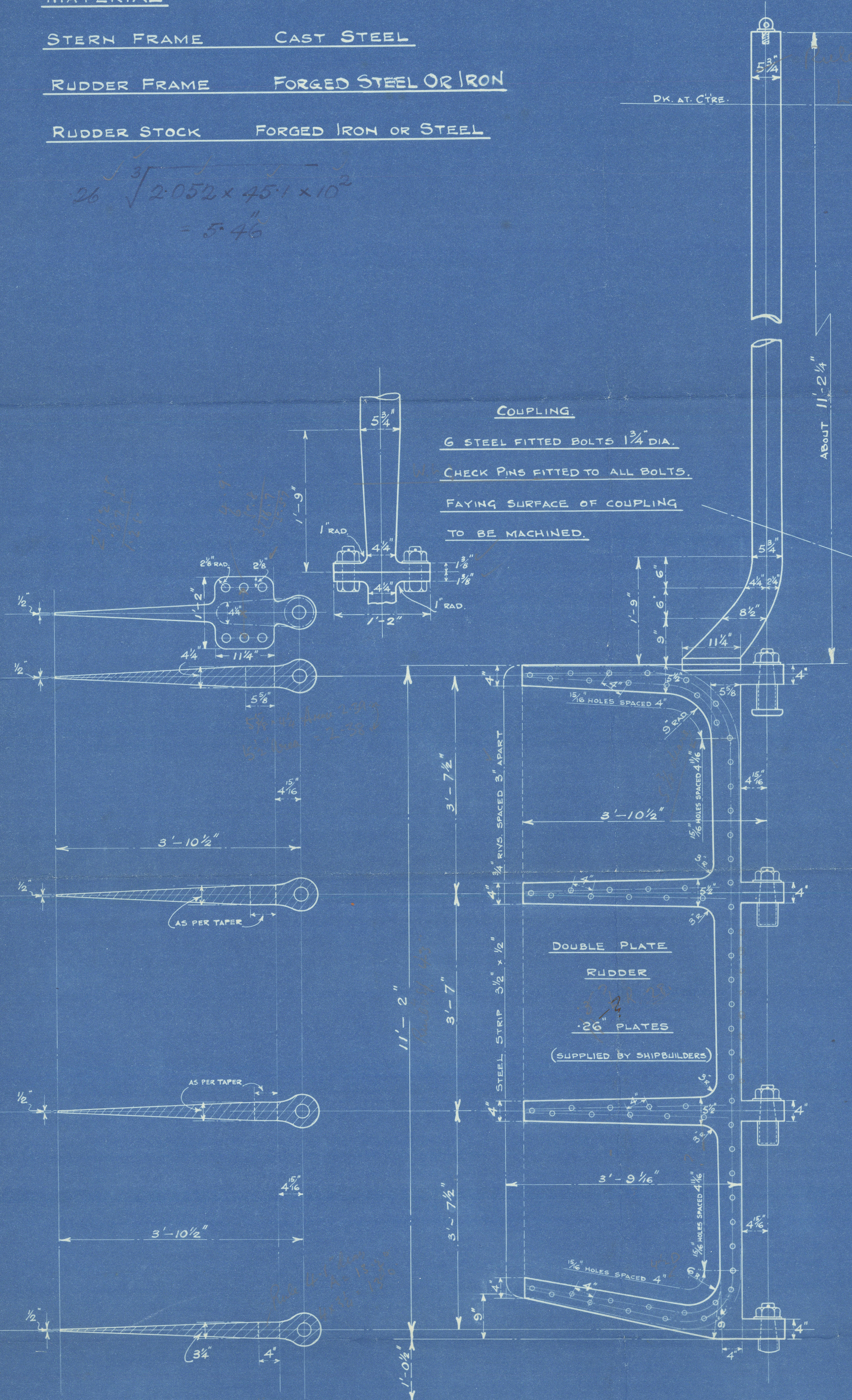
MATERIAL

STERN FRAME CAST STEEL

RUDDER FRAME FORGED STEEL OR IRON

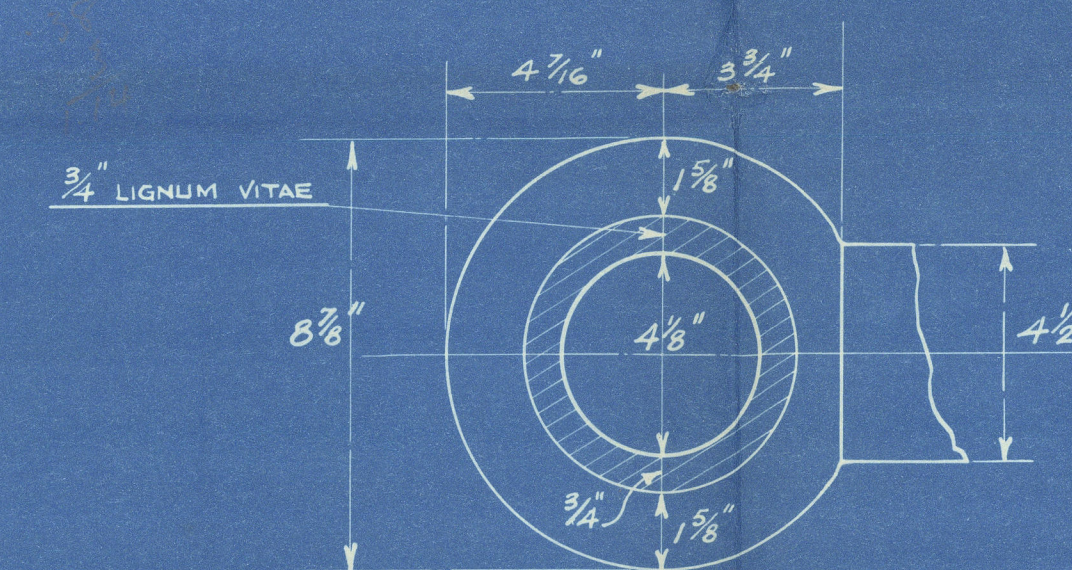
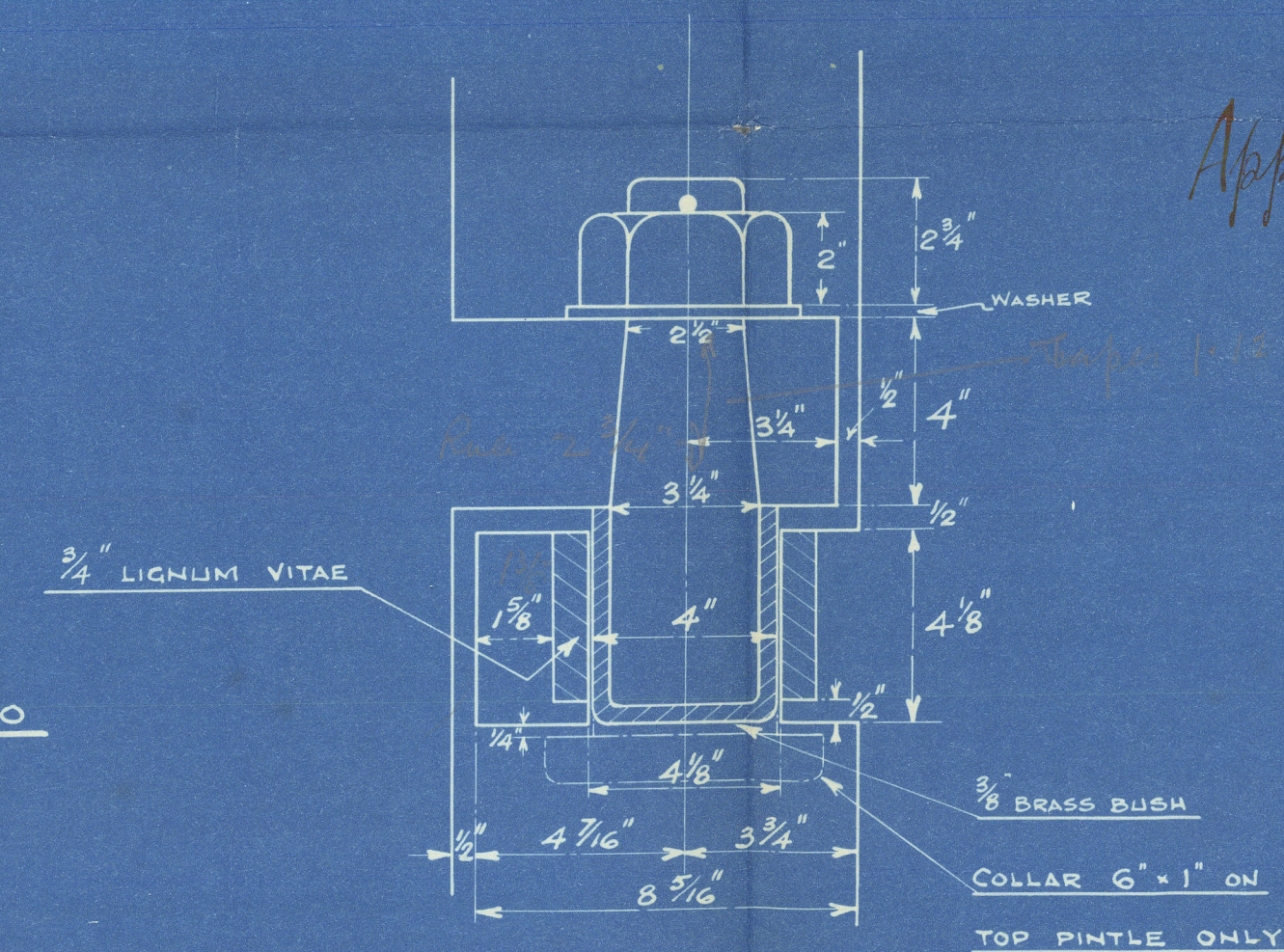
RUDDER STOCK FORGED IRON OR STEEL

$$26 \sqrt{2052 \times 451 \times 10^2} = 546$$

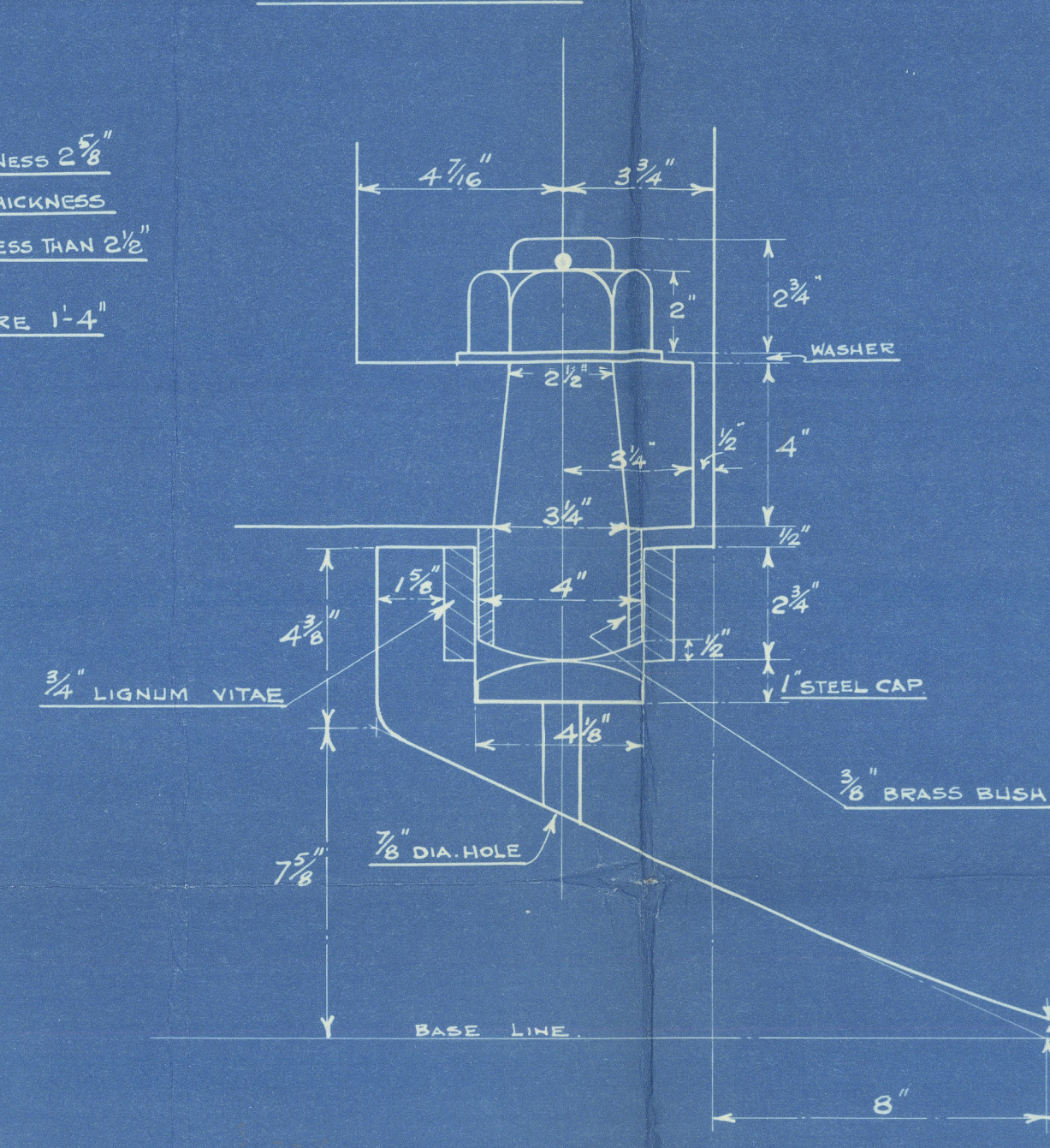


DETAILS OF PINTLES & GUDGEONS

SCALE:- $\frac{1}{4}" = 1 \text{ INCH}$



NOTE:- CENTRE LINE OF PINTLES TO BE PERPENDICULAR TO BASE AND PARALLEL TO AFTER SIDE OF RUDDER POST OF STERN FRAME AS SHOWN. ALL PINTLES TO BE OF STEEL, BRASS BUSHED. TO BE MADE AND EFFICIENTLY FITTED AS PER DRAWING.



BOTTOM GUDGEON

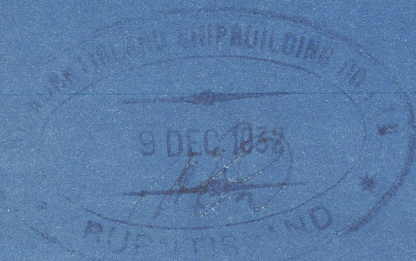
SCALE:- $\frac{1}{4}" = 1 \text{ INCH}$

DRILLING

RUDDER FRAME $\frac{15}{16}"$ DIA. HOLES SPACED AS SHOWN

STERN FRAME $\frac{11}{16}"$ DIA. HOLES 5' APART OR TO CR. TO CR. IN PROPELLER POST AS SHOWN.

PLAN No P.9.



3

SEE ALSO N^o 5.

Rudder & Sternpost.

Quintusland S.B. Co.

N^o 176

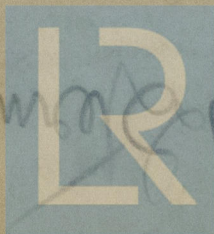
12-12-32.

$\frac{3}{2}$ CEDARWOOD

199'-10"

bag

Quintusland N^o 176.



© 2021

Lloyd's Register
Foundation

002736-002742-0014