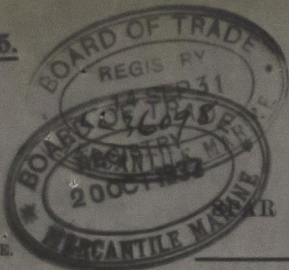


ISSUED BY THE  
BOARD OF TRADE

## SURVEYS FOR FREEBOARD.

HULL DECK, AWNING DECK, OR PARTIAL AWNING DECK STEAMSHIPS.

Date of Build 1931

L.L. No.

Ship's Name

Carthage

Port of Registry and Nationality

Port of Survey

Glasgow

Date of Survey

September 1931

Surveyor's Signature

A. R. Smith

Official Number

Gross Tonnage

NOTE.- This report is to be accompanied in all cases by the general report on Form L.L. 4.

Registered dimensions from certificate of registry.	Length	Breadth	Depth (To main deck only in awning-decked vessels.)	Under Deck Tonnage. (To main deck only in awning-decked vessels.)
	522.5	71.4	33.15	8683.92
Length on Loadline	518.5	Frame depth 12 Rule " 8 Deduct - 67	Coiling + 21 Sheer + 55	Peak Tanks
Corrected Dimensions	518.5	70.73	33.91	8683.92

Moulded Depth as measured in dry dock

To Spar Deck

To Main Deck

37' 1" mean

## Correction for Length.

Table B or C.

Table A.

Length of ship on Loadline ... 518.5

Length in Table ... 445.0

Difference ... 73.5

Correction for one foot ... 08

Correction ... 588 add

## Correction for Height of 'Tween Decks.

Scantling Numerals.

LLOYD'S 1888 RULES.

First.

Second.

Actual ...

If height of 'Tween decks were 7 feet ...

Do numerals change grade? ...

Height of 'tween decks from top }  
of beam to top of beam at side }

feet

inches.

Correction for height of 'tween decks =

=

inches.

Coefficient of fineness ...

70

Hipped tank in fore body only  
Modifications under par. 4 (a) to (e), if required

01

Coefficient as corrected ...

69

## Allowance for Extra Strength.

Freeboard Table B=...

Freeboard Table A=...

Correction for length

Correction for length

Correction for height }  
of 'tween decks ... }

Less 12%

Difference...

of ... maximum longitudinal allowance.

of ... transverse "

## Partial Awning Decks.

	Length. (Feet.)	Height. (Feet.)
Part Awning Deck ...		
Raised Quarter "		
Poop "		
Total		

Position of Break before or abaft Amidships=

tenths

Maximum Allowance for EXTRA STRENGTH per Tables=

Correction for EXTRA STRENGTH

2.5K 7-0

inches

FREEBOARD recommended amidships from centre of disc to top of statutory deck line

Reduction for fresh water ...

" Indian Summer ...

Addition " Winter ...

" Winter North Atlantic ...

## SUMMARY.

Freeboard by Table B or C ...

83.42

Correction for length ...

Correction for height of 'tween decks }  
in spar-decked ships ... }Correction for strength in excess of }  
Lloyd's rules ... }

Correction for iron deck if required ...

Other corrections (if any) ...

Winter freeboard ...

Statutory deck line correction ...

Deduction in Summer.

Winter.

Table A.

Summer.

Table B.

Indian Summer.

Table C.

North Atlantic Winter

\* All vessels which are equal in strength to Lloyd's spar-decked rule, or which, although in excess of that rule, do not come up to Lloyd's requirements for ship of full scantlings to the upper deck, are to be considered as spar-decked ships the freeboard for which will vary with their strength.

All vessels which are equal in strength to Lloyd's awning-decked rule, or which, although in excess of that rule, do not come up to Lloyd's requirements for spar-decked vessels, are to be considered as awning-decked ships, the freeboard for which will vary with their strength.



State any special features in the construction of the Vessel \_\_\_\_\_

November 1935 full survey - no alterations affecting freeboard  
assignment 6/11/35

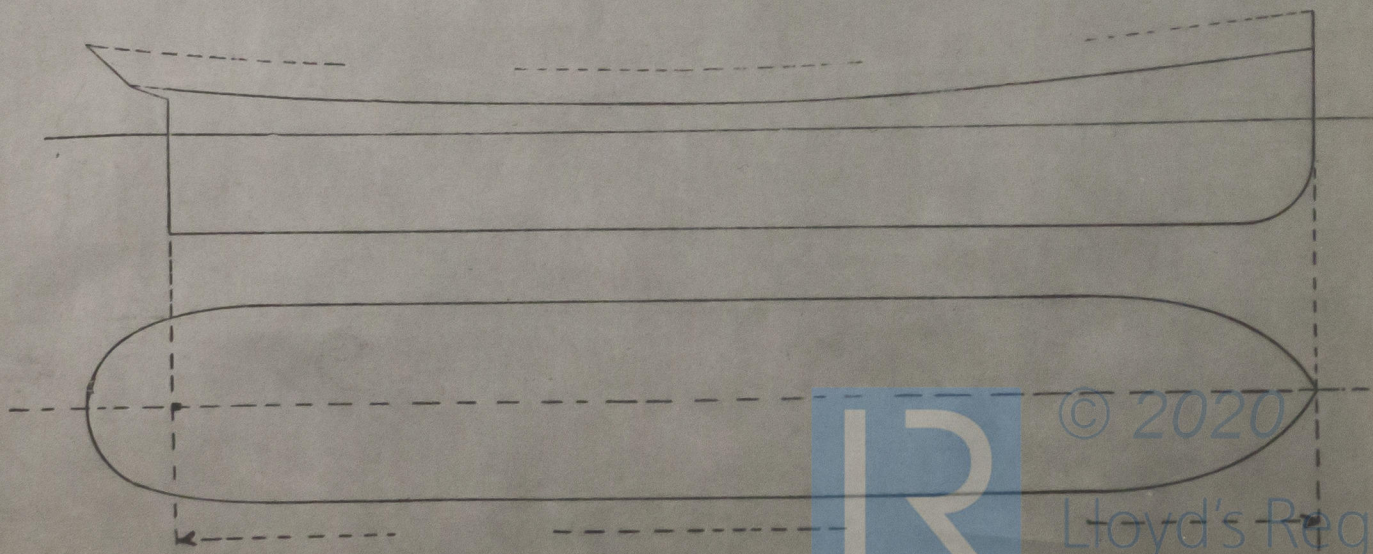
Sept. 1936 Annual survey completed. satisfactory. 6.2 undrunk 23.9.36  
Nov. 1943 Partial survey for short term certificate. no alterations affecting freeboard  
assignment 6/11/43

10/11/43 11/11/43

10-2  
9-11.5  
2.5 = .42  
9-11.5  
1.02  
9-11.92  
3-0.5  
6-11.02  
83.42

46-1  
57-1  
9.025 ft.

Show by sketch the number and height up of bulkheads, web frames, etc., also position of any cargo ports, or gangways in topsides, and the compensating doublings, if any, in way of them.



© 2020

Lloyd's Register  
Foundation