

# SHIP No 838-9

## MIDSHIP SECTION

SCALE - 1/2" = 1 FOOT

DRAWING No 7/838-9

CLASS \* 100A 1 (LLOYDS)

### DIMENSIONS

LENGTH B.P.	240'0"
BREADTH MLD.	38'6"
DEPTH MLD. TO UPPER DECK	21'6"
DEPTH MLD. TO LOWER DECK	13'6"
DRAFT, SUMMER MOULDED	13'35"

### EQUIPMENT NUMERAL

L(3+0) = 240 (38.5 + 21.5)	= 14400
MIDSHIP DK HOUSE ON UPPER DK (70 x 7.5 x 5)	= 2625
BOAT DK (40 x 7.5 x 5)	= 1500
NAV. BRIDGE DK (38 x 7.5 x 5)	= 1350
	14947.5

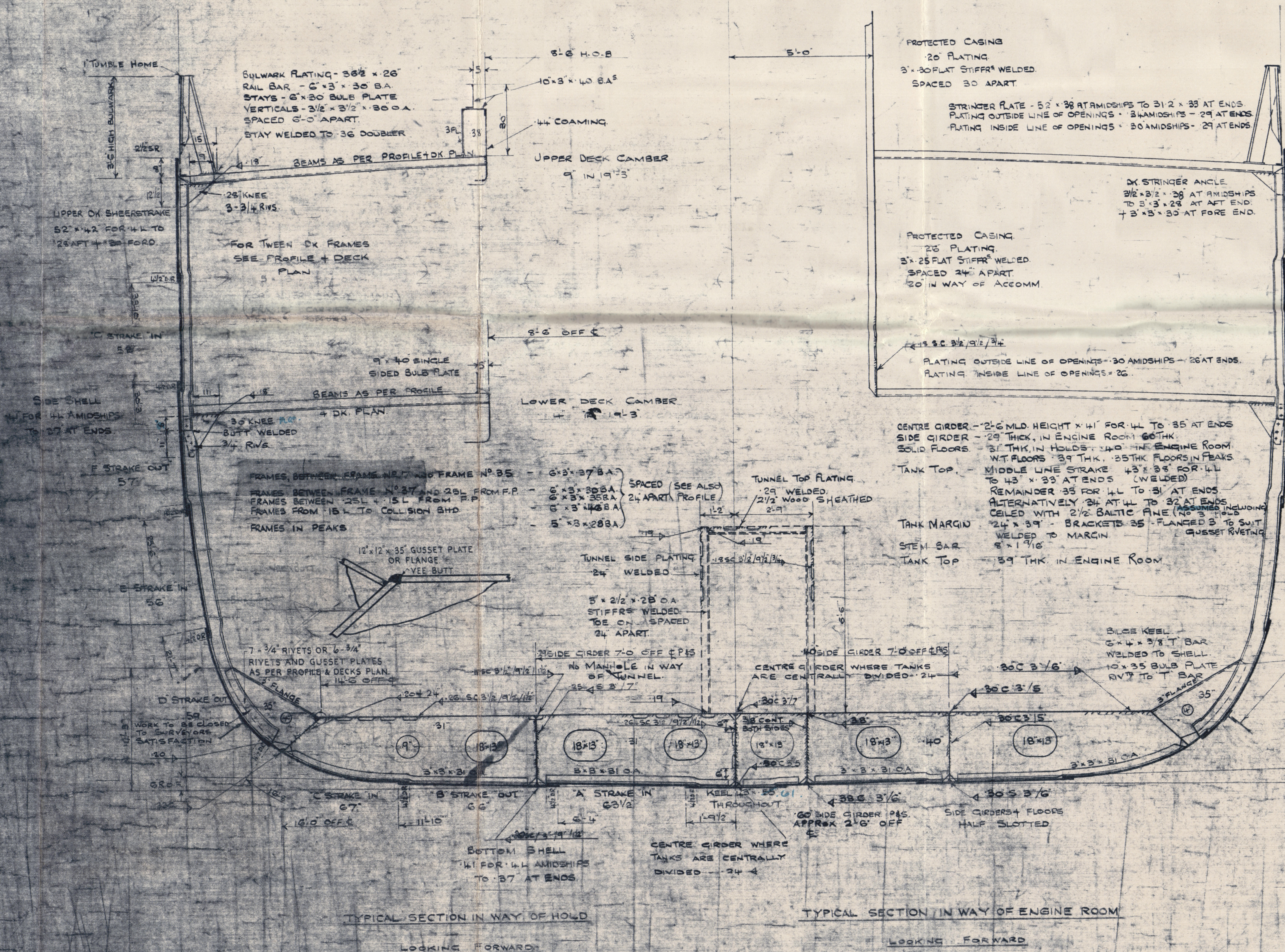
### EQUIPMENT LETTER 'D'

3 STOCKLESS ANCHORS	29 CWTs EACH
1 STREAM ANCHOR (EX-STOCK)	7 3/4 CWTs
240 FATHOMS - 1 1/8" DIA. STUD CHAIN CABLE	
75 FATHOMS - 3 3/4" CIRC. 9/12 F.S.W.R. FOR STREAM ANCHOR	
90 FATHOMS - 3 1/4" CIRC. 9/12 F.S.W.R. FOR TOWLINE	
2 LENGTHS - 90 FATHOMS 2 1/4" CIRC. 9/12 F.S.W.R. FOR HAWSERS	
2 LENGTHS - 90 FATHOMS 1 3/4" CIRC. 9/12 F.S.W.R. FOR WARPS	

### WELDING DETAILS IN ENGINE ROOM

FLOORS TO INTERCOSTAL SIDE GIRDERS	CHAIN FILLET WELD, 5" CENTRE TO CENTRE. LEG LENGTH 30"
FLOORS TO INNER BOTTOM	CHAIN INTERMITTENT FILLET WELD, 5" CENTRE TO CENTRE. LEG LENGTH 30"
SIDE GIRDER TO INNER BOTTOM @ 2'-6" OFF C	CONTINUOUS FILLET BOTH SIDES LEG LENGTH 38"
SIDE GIRDER TO INNER BOTTOM @ 7'-0" OFF C	CHAIN FILLET WELD 6" CENTRE TO CENTRE. LEG LENGTH 30"
INTERCOSTAL SIDE GIRDER TO SHELL, 2'-6" OFF C	CHAIN INTERMITTENT FILLET WELD 6" CENTRE TO CENTRE. LEG LENGTH 38"
INTERCOSTAL SIDE GIRDERS TO SHELL 7'-0" OFF C	STAGGERED INTERMITTENT FILLET WELD 6" CENTRE TO CENTRE. LEG LENGTH 30"

RIVS.	DIA.	INCHES
3/4"	7	5 1/4"
3/4"	5 1/2	4 1/8"
3/4"	7	5 1/4"
3/4"	4	3"
3/4"	4 1/2	3 3/8"
3/4"	7	5 1/4"



### WELDING DETAILS

CENTRE GIRDER TO SHELL	CHAIN FILLET WELD, 5" CENTRE TO CENTRE. LEG LENGTH 30"-28"
CENTRE GIRDER TO INNER BOTTOM	CHAIN FILLET WELD 7" CENTRE TO CENTRE. LEG LENGTH 30"-28"
FLOORS TO CENTRE GIRDER	DOUBLE FILLET WITH 6" SCALLOPS 9 1/2" CENTRE TO CENTRE 1 1/2" DEEP. LEG LENGTH 26"
FLOORS TO INTERCOSTAL SIDE GIRDER	STAGGERED INTERMITTENT FILLET, 7" CENTRE TO CENTRE. LEG LENGTH 25"
INTERCOSTAL SIDE GIRDER TO SHELL	DOUBLE FILLET WITH 6" SCALLOPS 9" CENTRE TO CENTRE 1 1/2" DEEP. LEG LENGTH 20"
INTERCOSTAL SIDE GIRDER TO INNER BOTTOM UNDER ENGINE THRU	DOUBLE FILLET WITH 6" SCALLOPS 12" CENTRE TO CENTRE 1 1/2" DEEP. LEG LENGTH 29"
INTERCOSTAL SIDE GIRDER TO INNER BOTTOM ELSEWHERE	DOUBLE FILLET WITH 6" SCALLOPS 9 1/2" CENTRE TO CENTRE 1 1/2" DEEP. LEG LENGTH 18"
MARGIN PLATE TO SHELL	DOUBLE CONTINUOUS FILLET LEG LENGTH 28"
TANK BRACKET TO MARGIN PLATE	DOUBLE CONTINUOUS FILLET LEG LENGTH 20" + 24"
FLOORS TO MARGIN PLATE	DOUBLE FILLET WITH 6" SCALLOPS 9 1/2" CENTRE TO CENTRE 3 1/4" DEEP. LEG LENGTH 18"
STIFFERS TO CASING BHD	DOUBLE FILLET WITH 6" SCALLOPS 9 1/2" CENTRE TO CENTRE 3 1/4" DEEP. LEG LENGTH 18"
TUNNEL BEAMS & STIFFERS TO TUNNEL TOP & SIDES	DOUBLE FILLET WITH 6" SCALLOPS 9 1/2" CENTRE TO CENTRE 3 1/4" DEEP. LEG LENGTH 18"
TUNNEL BEAMS TO STIFFERS	DOUBLE CONTINUOUS FILLET LEG LENGTH 19"
TUNNEL STIFFERS TO INNER BOTTOM	DOUBLE CONTINUOUS FILLET LEG LENGTH 19"
BEAM KNEES TO BEAM	DOUBLE CONTINUOUS FILLET LEG LENGTH 18"

### ICE STRENGTHENING (TO BRITISH CORPORATION RULES)

SHELL TO BE INCREASED TO 62 FOR 2'-0" ABOVE LOAD LINE AND 2 FT BELOW LIGHT LINE FOR A DISTANCE OF 35'-6" AFT STEM ABOARD THAT AREA. TO THE STERNPOST THE SHELL IS TO BE INCREASED TO 52.

### STRENGTHENING OF BOTTOM FORWARD

A 34" C STRAKES, FROM 25L TO 05L, TO BE INCREASED 30% ABOVE THE RULE THICKNESS = 52



Mr. S.

M.V. "FOUNTAINS ABBEY" ★

Messrs Hall Russell & Co

Ship No 839

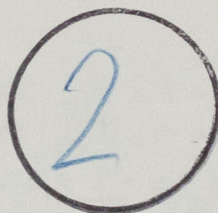
Aberdeen Report No. 23428

October, 1954

Midship Section

In use 'as fitted'

RECORDS DEPT.,  
LONDON.



© 2020

Lloyd's Register  
Foundation

002717-002724-0148