

Lloyd's Register of Shipping.

SURVEYS FOR FREEBOARD.

(CONDITIONS OF ASSIGNMENT.)

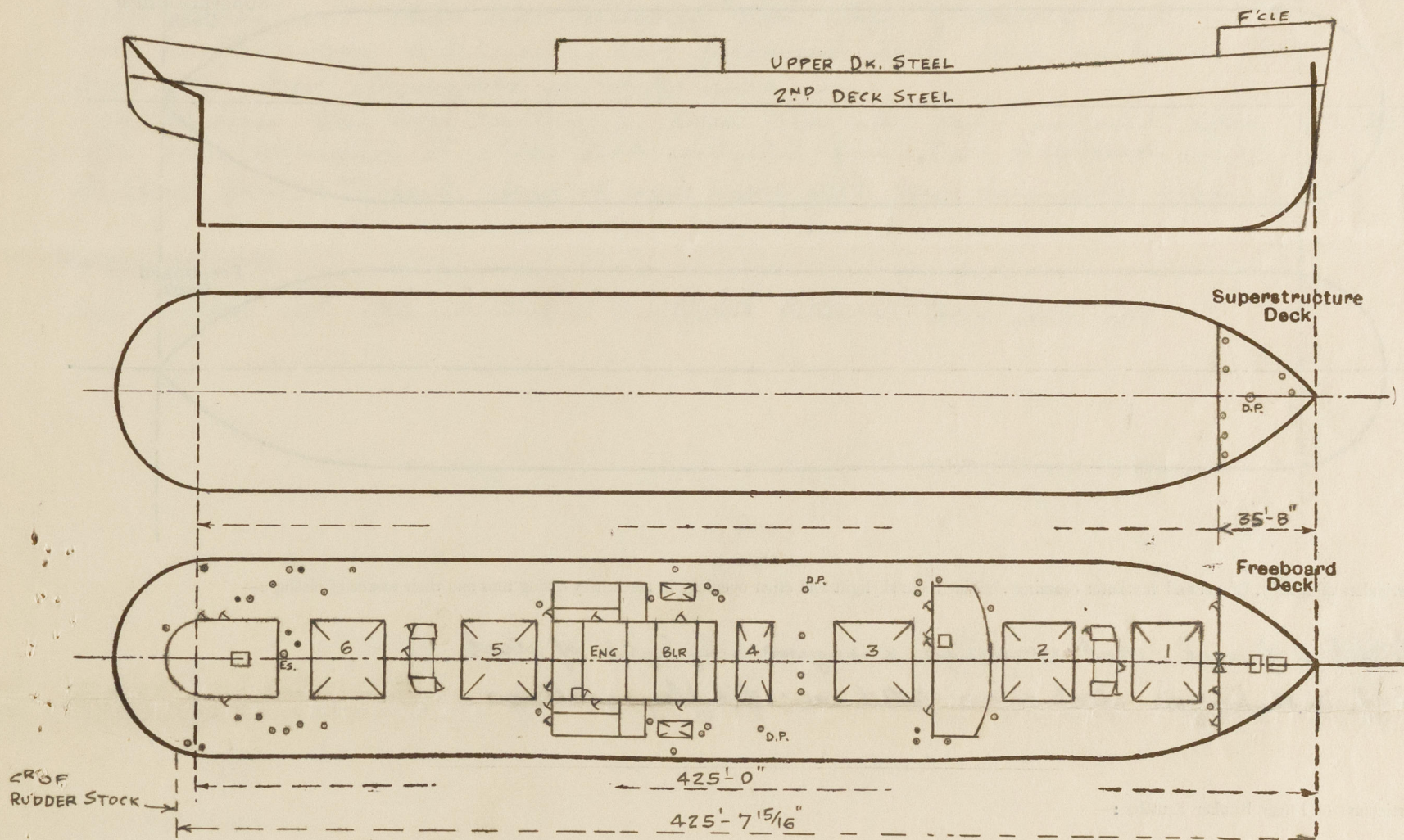
Index No. 37195
(For London Office only).

No. 18391

12 MAR 1943

Ship's Name "EMPIRE PROWESS" Port of Survey WEST HARTLEPOOL
 Official Number 168954 Surveyor's Signature E. Lee
 Nationality and Port of Registry BRITISH W. HARTLEPOOL Date of Survey March 1943

Disposition and dimensions of superstructures, trunks, deckhouses and machinery casings to be inserted in the diagrams and tabular statement:—



Particulars of Superstructures, Trunks, Casings, Deckhouses.

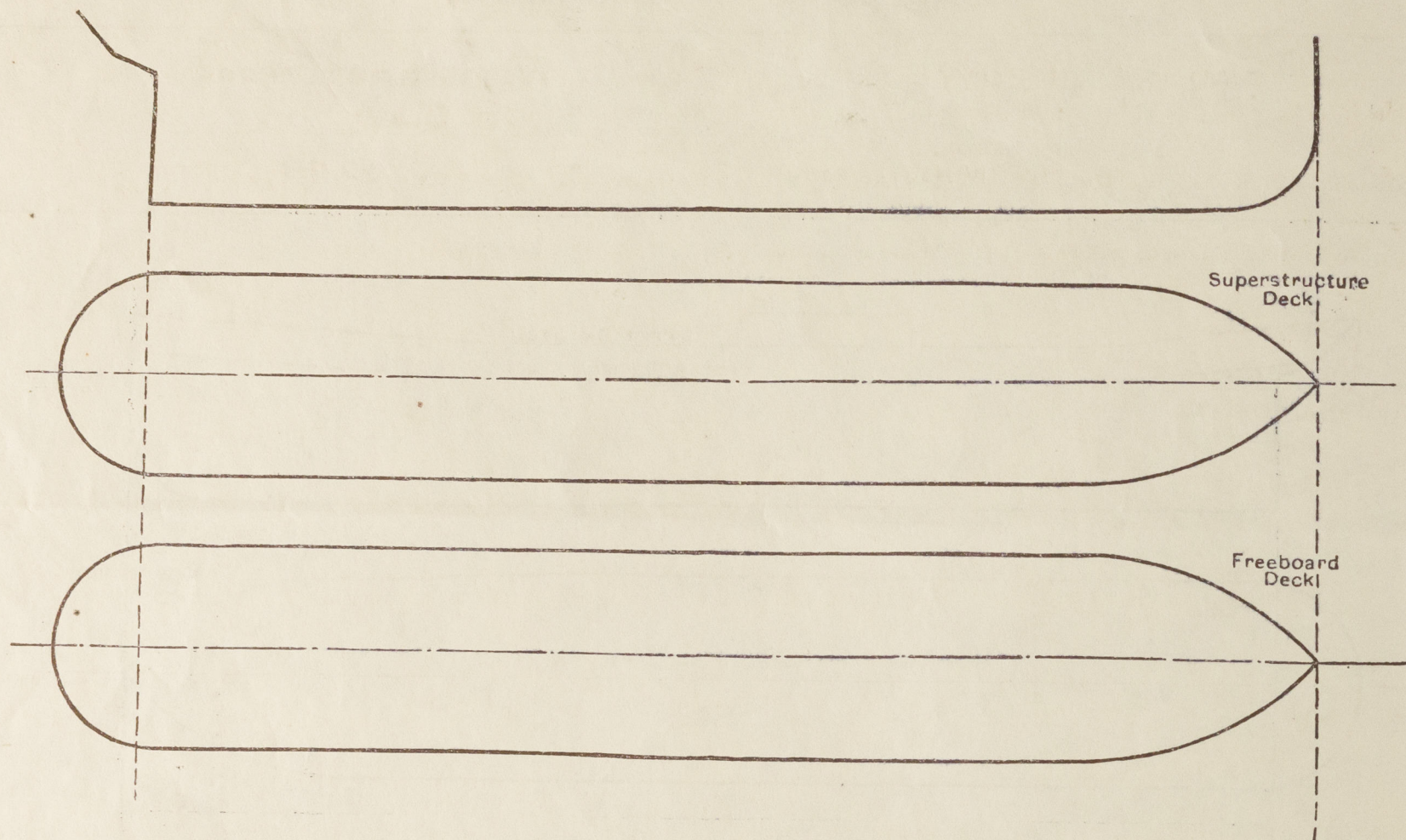
	Coaming	Plating	Stiffeners	Spacing	End Attachments of Stiffeners	Size of Openings	Height of Sills	Height of Casings
Poop Bulkhead				✓				
Raised Quarter Deck Bulkhead ...				✓				
Bridge, After Bulkhead				✓				
Bridge, Forward Bulkhead				✓				
Forecastle Bulkhead	30	30	4 x 3 x 5/16	30	none	1 at 5'-1" x 4'-1" 3 at 5'-1" x 2'-3"	12"	6'-9"
Trunk, Aft				✓				
Trunk, Forward				✓				
Exposed Machinery Casings on Freeboard or Raised Quarter Decks ...	35	30	3 x 3 x .30 & 3 1/2 x 3 x .40	31	bkts at top	2 at 4'-0" x 2'-3"	25"	7'-9"
Exposed Machinery Casings on Superstructure Decks				✓				
Machinery Casings within Superstructures not fitted with Class I Closing Appliances				✓				
Deckhouses on Flush Deck Ships	25 34	25 30	3 x 3 x .35 5 x 3 x .35	30 TO 45 24 TO 47	BKTS T & B BKTS OR LOGS	2 at 4'-6" x 2'-0" 1 at 4'-6" x 4'-0"	24	7'-6"

Particulars of Closing Appliances (state if capable of being manipulated from both sides).

Poop Bulkhead	✓
Raised Quarter Deck Bulkhead ...	✓
Bridge, After Bulkhead	✓
Bridge, Forward Bulkhead	✓
Forecastle Bulkhead	Hook bolted plate & hinged steel doors operated from both sides.
Exposed Machinery Casings on Freeboard or Raised Quarter Decks ...	Hinged steel doors operated from both sides.
Exposed Machinery Casings on Superstructure Decks	✓
Machinery Casings within Superstructures not fitted with Class I Closing Appliances	✓
Deckhouses on Flush Deck Ships ...	Efficient hinged wood & steel doors operated from both sides.

PARTICULARS OF PROTECTION TO OPENINGS, ETC.

The following diagrams should be used to indicate the positions of cargo and coaling hatchways, gangway, cargo and coaling ports, ventilators, companionways, etc., which would affect the seaworthiness of the ship:—



Particulars of fiddle, funnel and ventilator coamings, engine room skylight and other openings in machinery casing tops and their means of closing:—

Fiddle, funnel, vent coamings & engine skylight of steel.
Efficient hinged steel covers fitted over fiddle gratings.

Particulars of Flush Bunker Scuttles:—

None.

Particulars of Companionways:—
Companionway incorporated in deckhouse leading to crew's space aft. 2-1/8" thick solid hinged wood doors 5'-0" x 2'-0" operated from both sides. Sills 2'-3".

Companionways in mast deckhouses leading to holds & tween decks. Hinged steel watertight doors 4'-3" x 1'-8" operated from both sides. Sills 2'-4".

Companionway in saloon house to stewards' store in 'tween decks. Hinged steel doors 4'-7" x 4'-0" operated from both sides, 24" sill, giving access to hatch with 2 1/2 covers & 2 1/2" sill. Docking bar fitted.

Particulars of Ventilators in exposed positions on freeboard and superstructure decks:—

Forecastle:— 1-10" vent to store. 36" x 32" ✓
2-8" " to foyle. 36" x 30" ✓
1-22" " to 'tween decks (derrick port efficiently constructed) 36" x 30" ✓
1-18" " to No 1 'tween deck & hold 36" x 40" ✓
2-3-6" G.N.V.'s to foyle 18" high. ✓
Freeboard:— 1-18" vent to No 1 'tween deck & hold 7'-4" x 40" supported ✓
4-36" vents to 'tween decks & holds fitted on top of masthouses 2'-3" x 40" ✓
2-18" vents to No 2 'tween dk & hold 8'-0" x 40" supported ✓
2-15" " " refrig. machy. & store 36" x 36" ✓
4-12" " " No 3 'tween decks 36" x 34" ✓
3-14 1/2" " " hold 36" x 36" ✓
2-27" derrick port vents efficiently constructed ✓
1-14 1/2" vent to cross bunker 36" x 36" ✓

3-6" G.N.V.s. 18" high. fitted. port side. abreast No 6 Hatchway
2-6" G.N.V.'s to port bunker 18" high. ✓
2-6" vents to cross bunker 36" x 30" ✓
2-12" " " No 4 'tween deck etc. 36" x 34" ✓
2-12" " " " " " 7'-9" x 34 supported ✓
2-18" " " No 5 " " 7'-6" x 40 " ✓
2-12" " " No 6 " " 36" x 34 " ✓
3-6" G.N.V.'s to accommodation 18" high. ✓
7-6" vents to accommodation 36" x 30" ✓
1-8" " " " 36" x 30" ✓
1-18" " " No 6 'tween dk etc 36" x 40" ✓
1-12" " " accommodation 36" x 34" ✓
1-14" " " No 6 hold 36" x 36" ✓
2-10" " " accommodation 36" x 32" ✓
1-6" G.N.V. " steering gear 18" high. ✓
1-15 vent " " 36" x 36" ✓
closing appliances supplied.

Particulars of Air Pipes in exposed positions on freeboard, raised quarter, or superstructure decks:—

Forecastle:— 1-4" air pipe to F.P. tank 18" high ✓
1-2 1/2" " " " No 1 d.b. tank 18" " ✓
Freeboard:— 2-2 1/2" " " " " 30" " ✓
12-3" " " " " 30" " ✓
10-4" " " " " 30" " ✓
2-5" " " " No 5 " 30" " ✓
2-5" " " " " " 30" " ✓

closing appliances supplied.

"EMPIRE PROWESS"

Particulars of Gangway Cargo and Coaling Ports:—

None.

Particulars of Scuppers and Sanitary Discharge Pipes:—

Scuppers, washbasin & bath wastes from deckhouses above freeboard deck, lead overboard above 2nd deck without stormvalves at ship's side. ✓
Scuppers from forecastle space (p.s.) lead overboard above 2nd with M.C.I. stormvalves at ship's side. ✓
Scuppers from washplace in 'tween decks aft, lead overboard above 2nd deck with brass stormvalve at ship's side controlled from above freeboard deck. ✓
Soil discharges from deckhouses above freeboard deck lead overboard above 2nd deck with brass stormvalves at ship's side. ✓
Soil discharge from crew's lavatory in 'tween decks aft leads overboard above 2nd deck with brass stormvalve at ship's side controlled from above freeboard deck. ✓
Scuppers from 2nd deck (clear of crew's space aft) lead down into bilges. ✓

Particulars of Side Scuttles:—

Side scuttles with efficient hinged deadlights fitted in 'tween decks aft. ✓

Vertical distance of Sill of lowest Side Scuttle above top of keel 34'-6" ✓

Particulars of Guard Rails:—

Forecastle deck:— 2 tier rails 3'-3" high with stanchions spaced about 4'-9" apart. ✓
Freeboard deck:— Forward of saloon house - 3 tier rails 3'-9" high with stanchions spaced about 5'-0" apart. ✓
Abreast saloon house & engineers deckhouse - bulwark 3'-6" high with 3 freeing ports 7'-0" x 9" - 9" above deck edge. ✓
Aft of engineers deckhouse - 3 tier rails 3'-9" high with stanchions spaced about 5'-0" apart. ✓

Particulars of Gangways, Lifelines, etc.:—

Lifelines fitted

Particulars of Freeing Arrangements.

	Length of Bulwark	Height of Bulwark	Size of Freeing Ports	Number each side	Area each side	Rule area each side
After Well ...			open rails ✓			
Forward Well ...						

State position of each freeing port ... After Well:—

(F. and A. position and height above deck edge) Forward Well:—

State whether the freeing ports are fitted with shutters, bars, or rails, and give particulars of such:—

Additional area where sheer is less than standard.

PARTICULARS OF PROTECTION TO OPENINGS, ETC.

HATCHWAYS ON FREEBOARD AND SUPERSTRUCTURE DECKS.												
INSIDE FLE												
Description of Hatchway	FORE PEAK	CHAIN LKR.	Nº1	Nº2	Nº3	Nº4	Nº5	Nº6	COAL HATCHES	CASING TOP.	ESCAPE FROM CREW SPACE	
Dimensions of Hatchway	4' 3"	2' 0" x 2' 6"	31' 6" x 20'	31' x 20'	31' x 20'	12' 11" x 20'	31' x 20'	31' x 20'	15' 6" x 5'	5' 2" x 20'	2' 0" DIA.	
<div style="display: flex; align-items: center;"> <div style="border: 1px solid black; padding: 2px; margin-right: 5px;"> 9 x 3 1/2 x .46 B.A. COAMINGS 12 x 3 1/2 x 1/2 x .50 CHANNEL </div> <div> Height above Deck ... 9" x 3" x Thickness { Sides45 Ends44 Stiffeners ... Brackets, Stays ... </div> </div>			31 .45 .44	31 .45 .44	31 .44 .44	31 .46 .44	43 .44 .44	43 .44 .44	31 .44 .44	9" x 3 1/2 x .40 B.A.	6" EFFICIENT ESCAPE SCUTTLE.	
HATCH BEAMS			5 5' 3"	5 5' 2"	5 5' 2"	1 6' 5 1/2"	5 5' 2"	5 5' 2"				
			18 1/2 x .36	17 7/8 x .36	17 7/8 x .36	19 1/2 x .38	17 7/8 x .36	17 7/8 x .36				
Bearing Surface			3 1/2	3 1/2	3 1/2	3 1/2	3 1/2	3 1/2				
FORE AND AFTERS												
HATCH COVERS			WOOD 2 1/2 F&A 3	WOOD 2 1/2 F&A 3	WOOD 2 1/2 F&A 3	WOOD 3 F&A 3	WOOD 2 1/2 F&A 3	WOOD 2 1/2 F&A 3	WOOD 2 1/2 ATH. 3	WOOD 2 1/2 F&A 2 1/2	HINGED STEEL W.T. ESCAPE SCUTTLE OPERATED FROM BOTH SIDES.	
Spacing of Cleats	24	18	24	24	24	24	24	24	24	24		
Number of Tarpaulins	1	1	2	2	2	2	2	2	2	2		
*Are wood fore and afters steel shod at all bearing surfaces? YES Are battens and wedges efficient and in good condition? YES Are tarpaulins in good condition and in accordance with rule requirements? YES Are lashings provided in accordance with rule requirements? YES (LOCKING BARS FITTED AT 1, 2, 3, 4, 5 & 6 HATCHES).												

Particulars of any special features:— Deeper loading endorsement will be required.

The openings in the 'tween deck bulkheads are closed by riveted watertight steel plates except those in bulkheads 14 & 87 which are closed by hinged watertight steel doors operated from both sides.

Endorsement at first survey and at surveys for renewal of Certificate:—

The fittings and appliances are in accordance with the particulars shown on this form (or as now modified) and are in good condition.

