

T.S.M.V. No 153. STERNPOST AND RUDDER.

SCALE 1/2" = 1 FOOT.

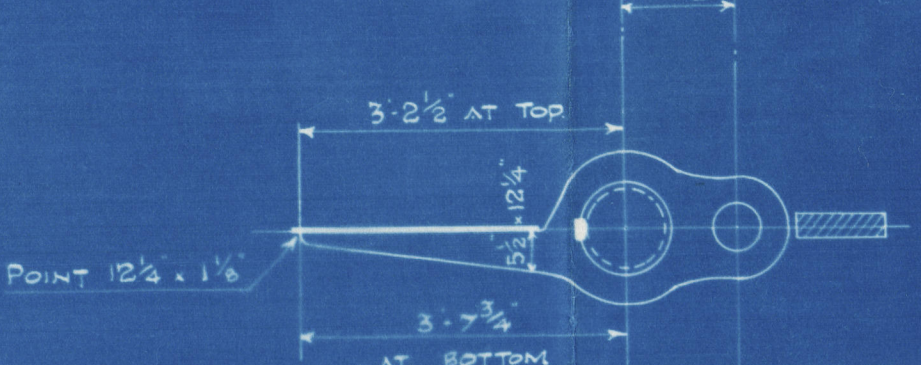
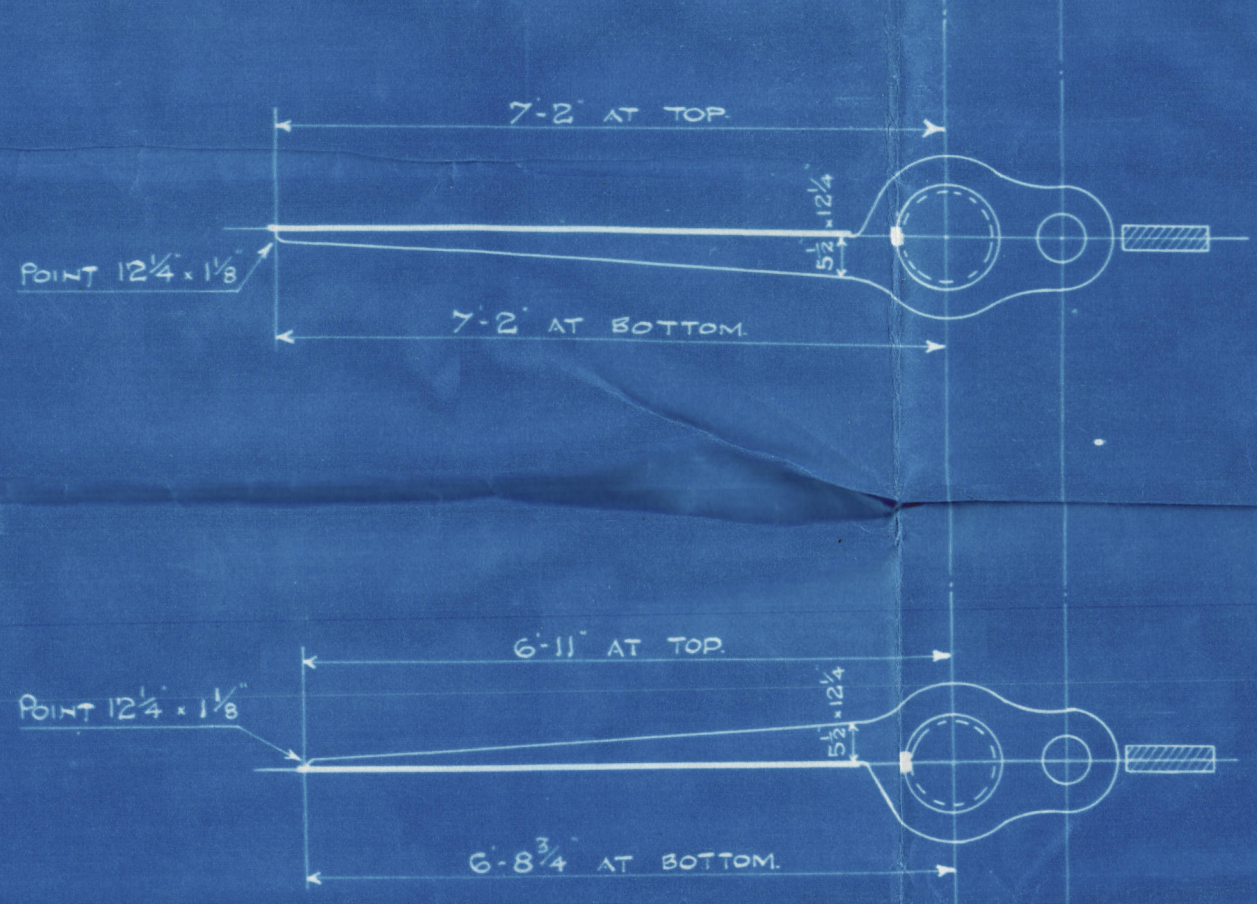
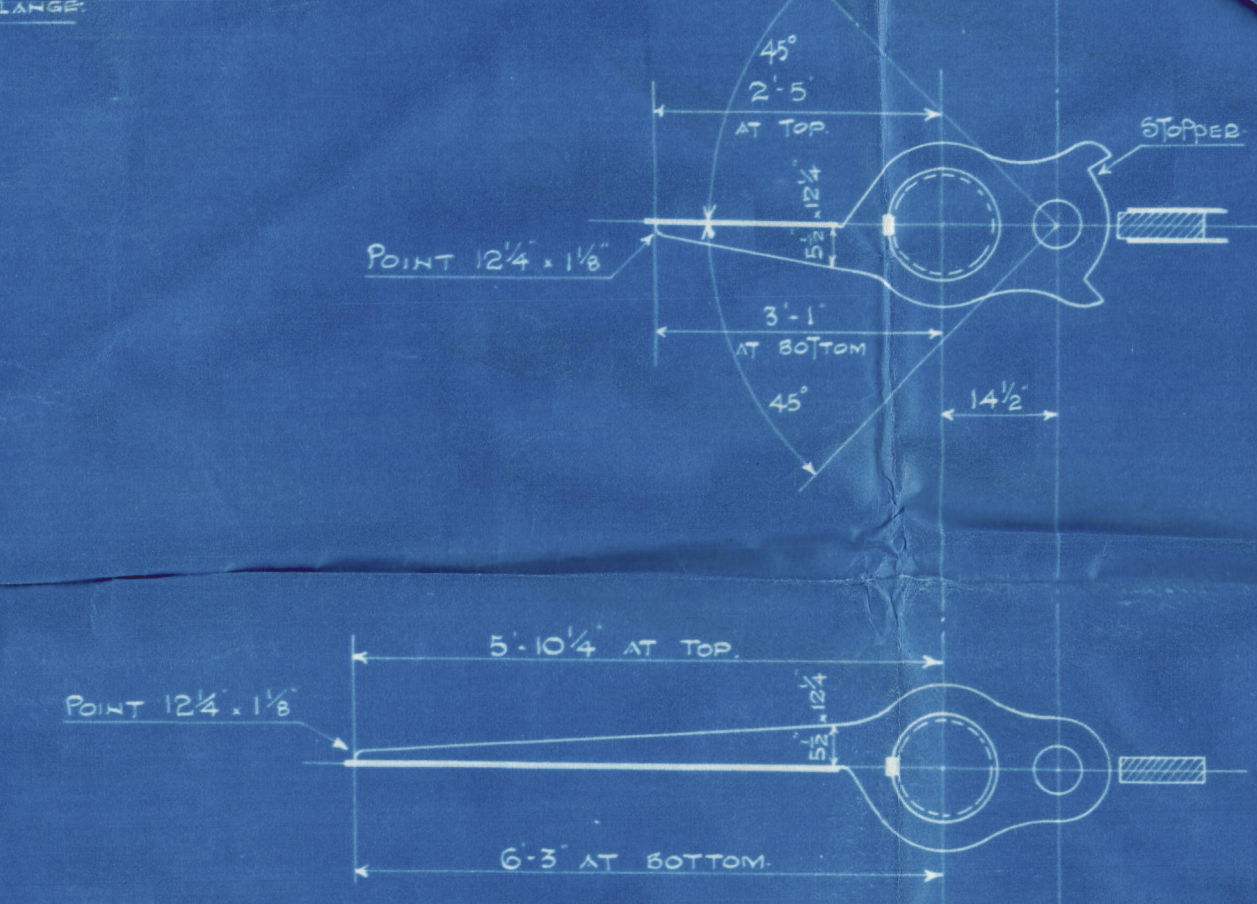
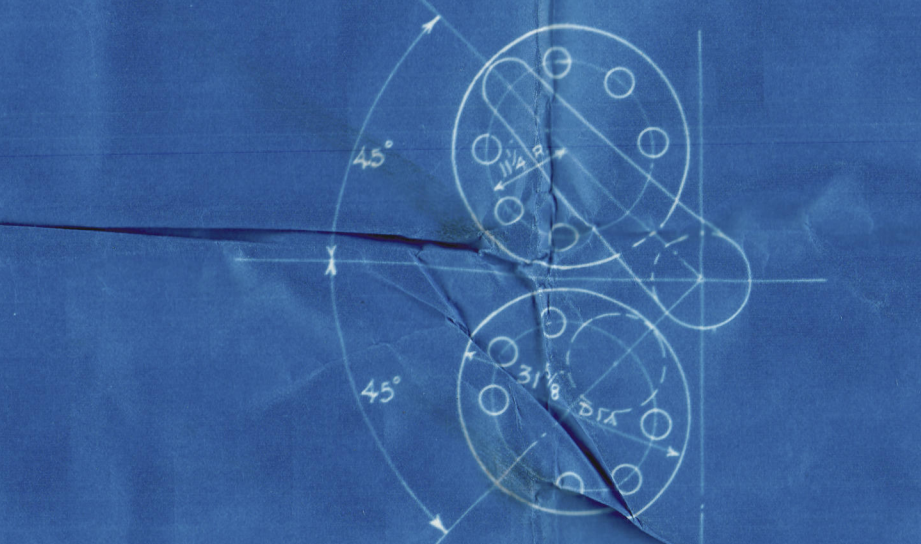
DETAILS 3" = 1 FOOT.

A.D. 155.9 x 4.078 x 635.76 x 11 1/4 DIA. SPEED 11 KNOTS L.D. 16583.
INCREASED 10% FOR OIL CARRYING VESSEL = 12 3/8 DIA STOCK.
RUDDER STOCK & MAINPIECE OF FORGED STEEL ARMS OF FORGED IRON.

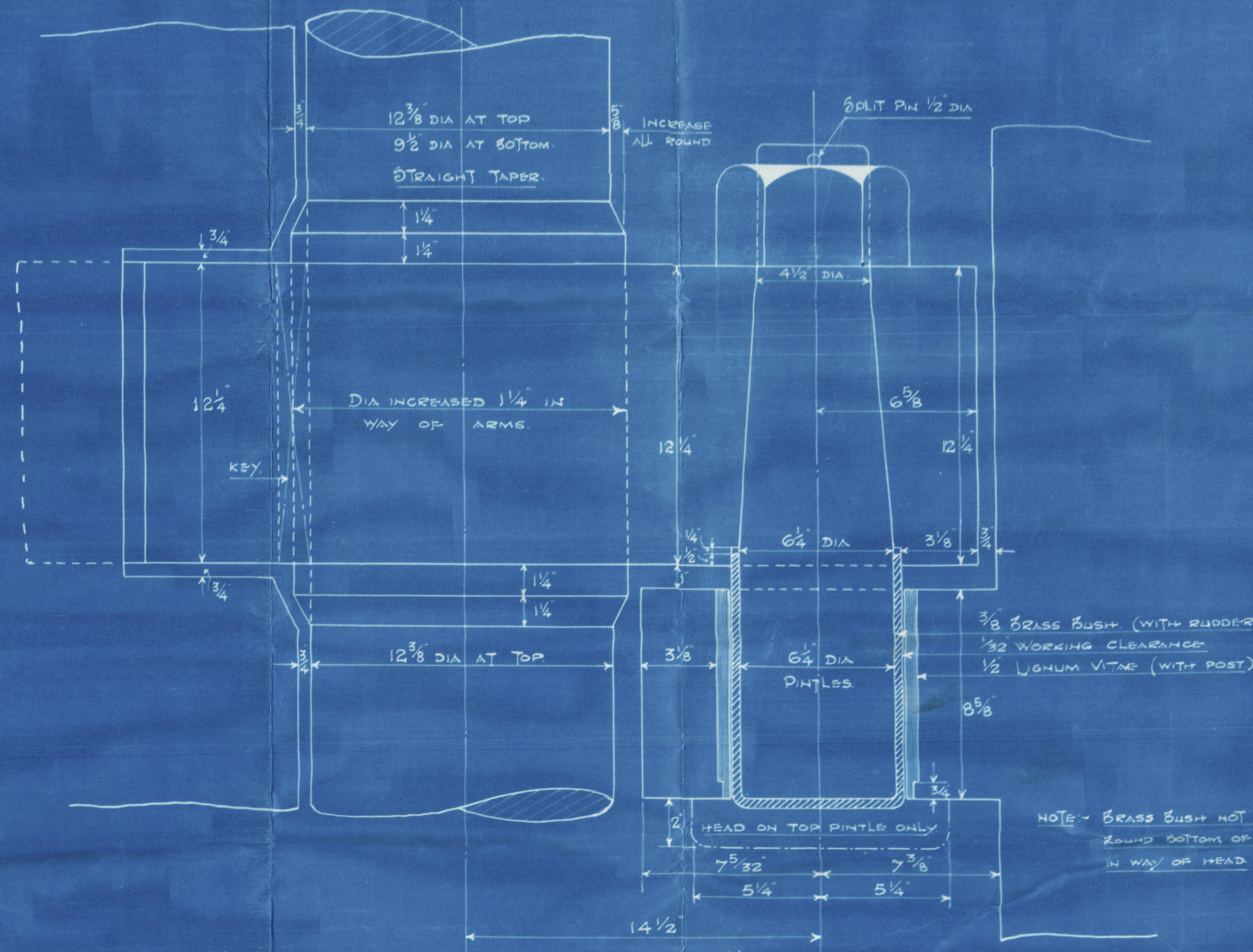
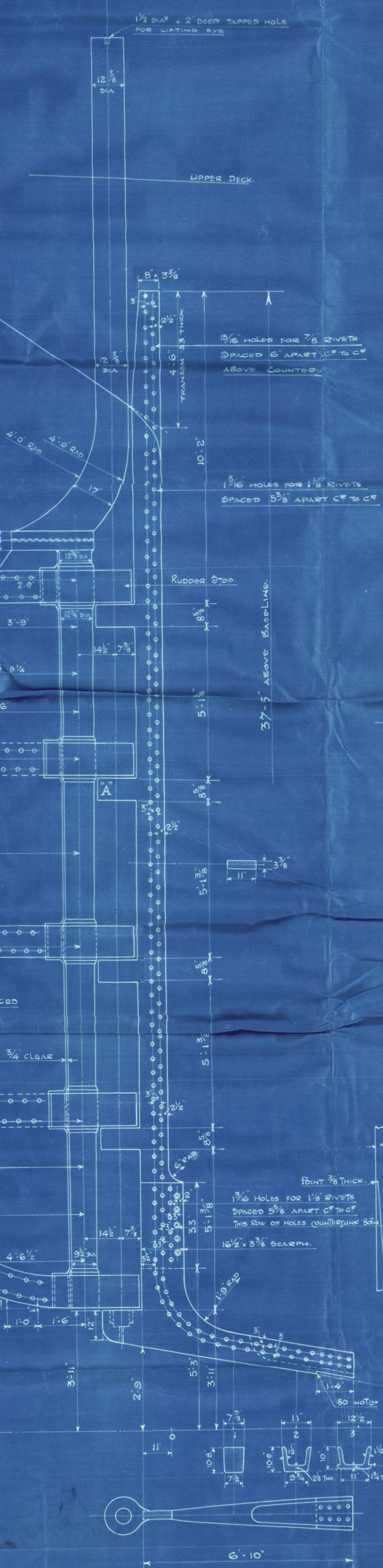
STERNPOST OF CAST STEEL.
ALL TO LLOYDS REQUIREMENTS.

COUPLING.

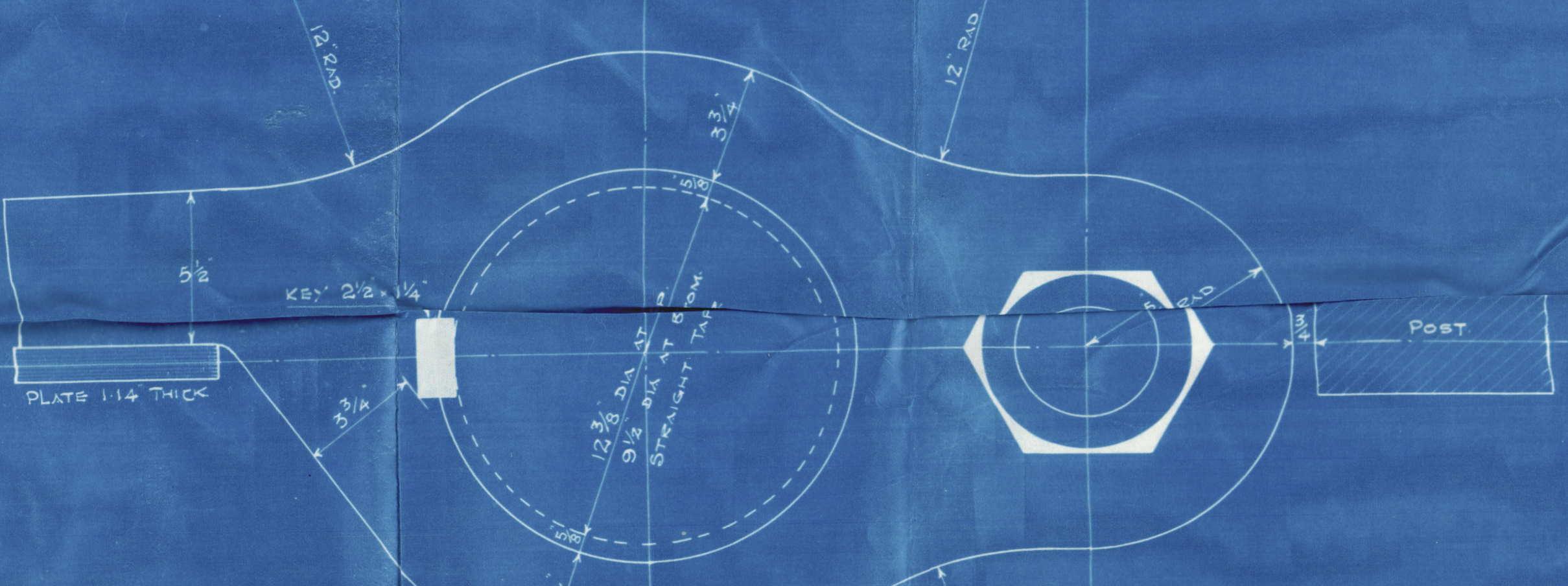
6 FITTED BOLTS 3 3/8 DIA.
FLANGES 3 3/8 THICK.
KEYWAY CUT AND KEY FITTED 2 1/2 x 1 1/4.



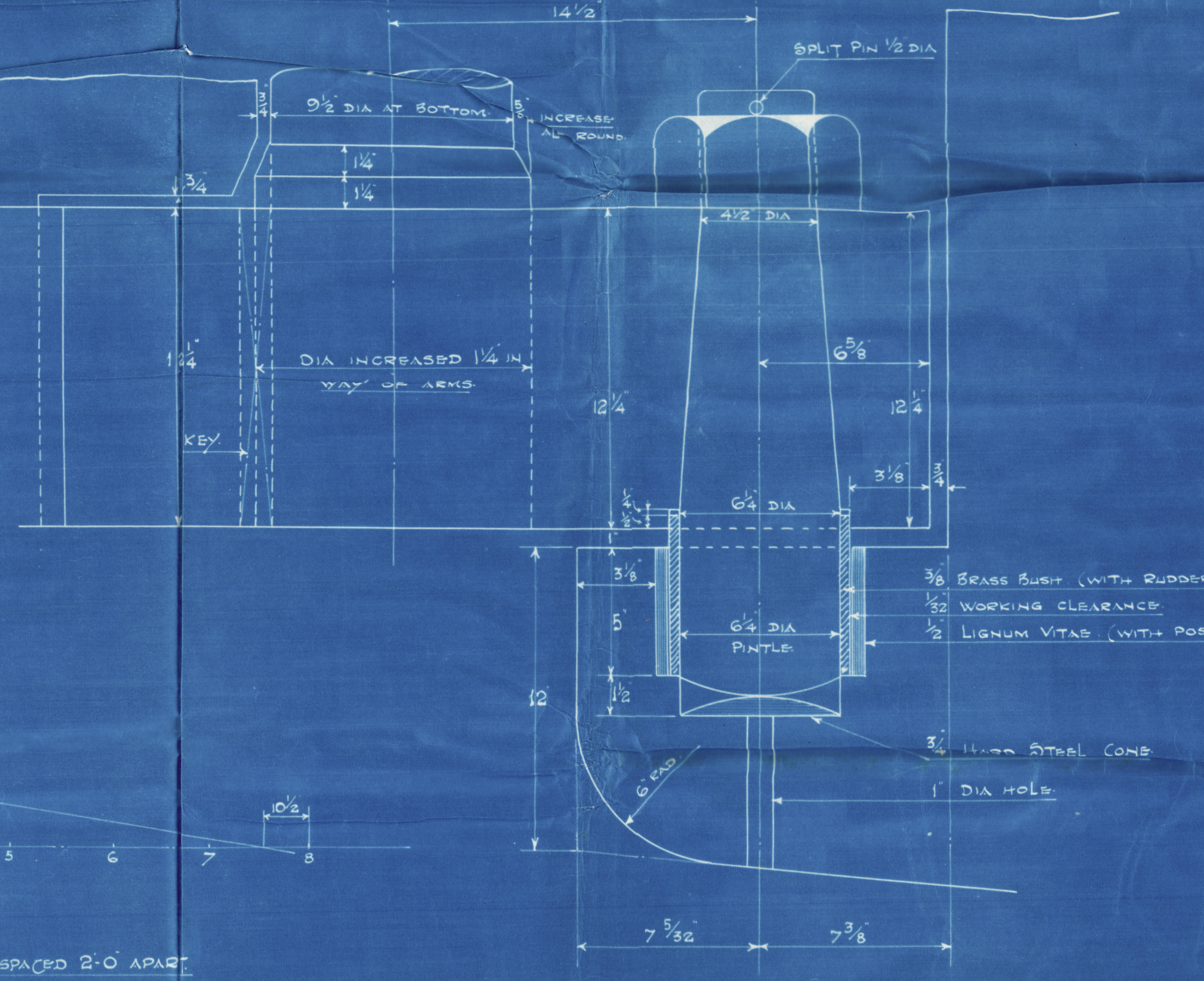
BASE LINE



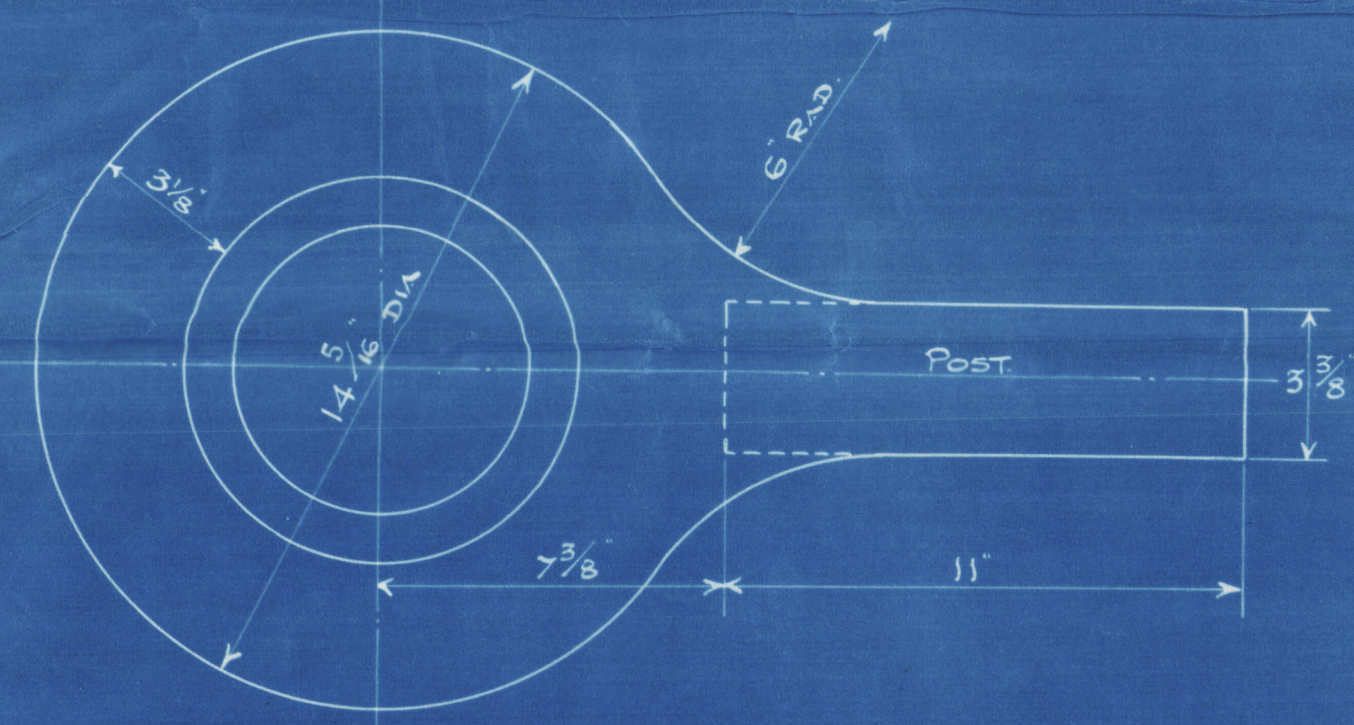
DETAIL OF PINTLES & GUDGEONS.



PLAN VIEW SHOWING STOPPER.



DETAIL OF BOTTOM PINTLE & GUDGEON.



PLAN VIEW OF RUDDER GUDGEON.

WJ.
30.4.29

Messrs Furness S.B.C.'s

No 153.

Stem Post & Rudder.

R/N 'FLEET TANK'

S.S. Athetregent X

MDB. RPT. No. 13990



© 2020

Lloyd's Register
Foundation

002717-002724-0002