

Lloyd's Register of Shipping.

SURVEYS FOR FREEBOARD.

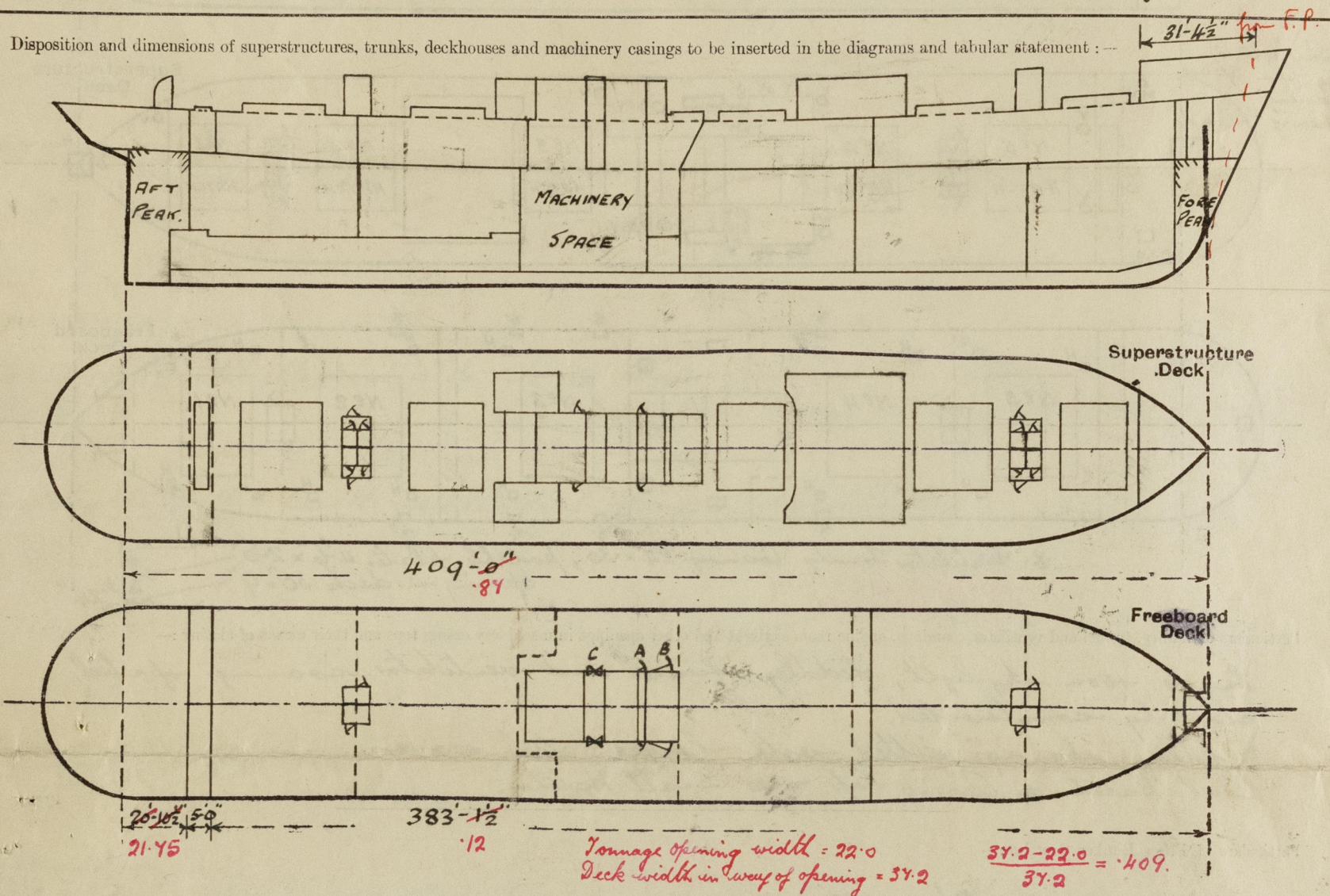
(CONDITIONS OF ASSIGNMENT.)

 Index No. 35073.
 (For London Office only.)

No. 32072

Ship's Name S.S. LOCH DEE Port of Survey Sunderland
 Official Number _____ Surveyor's Signature W. G. Miller
 Nationality and Port of Registry BRITISH, GLASGOW Date of Survey While Building

Disposition and dimensions of superstructures, trunks, deckhouses and machinery casings to be inserted in the diagrams and tabular statement:—



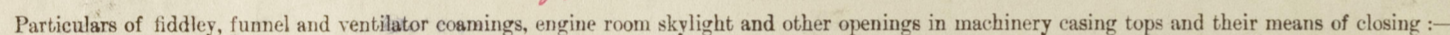
Particulars of Superstructures, Trunks, Casings, Deckhouses.

| | Coaming | Plating | Stiffeners | Spacing | End Attachments of Stiffeners | Size of Openings | Height of Sills | Height of Casings |
|---|---------|---------|----------------|---------|-------------------------------|--|--------------------|-------------------|
| Poop Bulkhead ... | 26" | 26" ✓ | 3" 3" 30" OA ✓ | 30" ✓ | ✓ | 1 @ 4'-7" x 2'-0" 1 @ 3'-7" x 2'-0" | 18" 24" ✓ | |
| Raised Quarter Deck Bulkhead ... | ✓ | ✓ | | | | | | |
| Bridge, After Bulkhead ... | 26" | 26" ✓ | 3" 3" 30" OA ✓ | 30" ✓ | ✓ | 2 @ 5'-0" x 3'-1" | 18" ✓ | |
| Bridge, Forward Bulkhead ... | ✓ | ✓ | | | | | | |
| Forecastle Bulkhead ... | ✓ | ✓ | | | | | | |
| Trunk, Aft ... | ✓ | ✓ | | | | | | |
| Trunk, Forward ... | ✓ | ✓ | | | | | | |
| Exposed Machinery Casings on Freeboard or Raised Quarter Decks ... | ✓ | ✓ | | | | | | |
| Exposed Machinery Casings on Superstructure Decks ... | 34" ✓ | 30" ✓ | 3" 3" 30" OA ✓ | 30" ✓ | continuous | 4 @ 5'-1" x 2'-0" | 18" ✓ | |
| Machinery Casings within Superstructures not fitted with Class I Closing Appliances ... | 34" ✓ | 26" ✓ | 3" 3" 30" OA ✓ | 30" ✓ | do. | A. 2 @ 5'-0" x 2'-0" B. 2 @ 6'-0" x 4'-7" C. 2 @ 8'-3" x 7'-5" | 18" 21" ✓ 6" | |
| Deckhouses on Flush Deck Ships ... | ✓ | ✓ | | | | | | |

Particulars of Closing Appliances (state if capable of being manipulated from both sides).

| | |
|---|--|
| Poop Bulkhead ... | 25" steel doors operated from both sides ✓ |
| Raised Quarter Deck Bulkhead ... | ✓ |
| Bridge, After Bulkhead ... | 2 7/8" shifting boards in full height twisted channels. ✓ |
| Bridge, Forward Bulkhead ... | ✓ |
| Forecastle Bulkhead ... | ✓ |
| Exposed Machinery Casings on Freeboard or Raised Quarter Decks ... | ✓ |
| Exposed Machinery Casings on Superstructure Decks ... | 30" steel doors operated from both sides. ✓ |
| Machinery Casings within Superstructures not fitted with Class I Closing Appliances ... | (A.) 25" steel doors, (B.) 30" steel doors, operated from both sides. ✓ (C.) 30" bolted steel cover plates. ✓ |
| Deckhouses on Flush Deck Ships ... | ✓ |

Lock Dec



Fidoloy openings fitted with hinged steel covers.
Coal Hatch on Casing Lap - see "Small Hatches." ✓

NONE. ✓

Steel companionway on Upper deck to Steering Gear Space aft.
40" plating, Coaming 18", steel door 40" ✓

| Particulars of Ventilators in exposed positions on various superstructure decks: | | | |
|---|------------|---|----------------------|
| 1-9" | bent on | to Side Deck to Side Green Decks & Store Coaming | 36" x 32 ✓ |
| 2-21" | " | " " " " " No. 1 Hold & Green Decks | 36" x 40 ✓ |
| 2-21" | " | " Upper " " " " " No. 3 " " " " | 30" x 40 ✓ |
| 2-24" | Device | fast bent to Cross & Side Bunches | 50" ✓ |
| 4-9" | bent to | Passageway & Green Deck Bunches on Upper Deck Coaming | 30" x 32 ✓ |
| 6-6" | " | Crew Accommodation " " " " | 30" x 30 ✓ |
| 2-21" | " | " " " " " No. 4 hold and Green decks " " " | 9-6" x 40 (stayed) ✓ |
| 2-21" | " | " " " " " No. 5 " " " " | 32" x 40 ✓ |
| 1-12" | " | " Funnel lift on Upper Deck Coaming | 30" x 34 ✓ |
| 1-12" | " | " Steering Gear House on " " " | 30" x 34 ✓ |
| 2-6" | M. bent to | Lamp & Paint Rooms 30" to lip. ✓ | |

all ventilator casings fitted with wood plugs and canvas covers. ✓

| Particulars of all types exposed positions of the various framed quarters of the shore structure deck. | | | |
|--|------|--|-------------|
| 1-3" | G.N. | to fore peak tank on fore deck | 18" to lip. |
| 3-3" | " | Nº1 D.B. Tank (1 on fore deck) on U.D. | 18" to lip. |
| 4-3" | " | Nº2 " " on upper deck | 18" to lip. |
| 4-3" | " | Nº3 " " " " | 18" to lip. |
| 4-3" | " | Nº4 " " " " | 18" to lip. |
| 4-3" | " | Nº5 " " " " | 18" to lip. |
| 2-3" | " | Scap Tank Off " " " | 18" to lip. |
| 1-3" | " | Off Peak Tank " " " | 18" to lip. |

all air pipes fitted with wood plugs. ✓

NONE. ✓

From Selter two decks, 6-3 1/2" dia. scupper each side, fitted with brass storm valves. ✓
 " " " " 1-2" dia. scupper (P. only) from meat-room fitted with brass storm valve. ✓

6-12" dia. sidelights each side to Accommodation, in Shelter Lween Deck ✓
2-12" " " " " Lamp & Paint Room & Steering Gear Space, in Shelter
Lween Deck

Sidelights fitted with substantial hinged deadlights. ✓

Vertical distance of Sill of lowest Side Scuttle above top of keel..... 34'-10" ✓

Particulars of Guard Rails:—
 Plate bulwark on Upper Deck for 145 feet $\&$. fitted with 3 freeing ports 4'0" x 9"
 Bulwark 42" x 26" with 5½ x 3 x 30 B.A. rail.
 Remains guard rails 3'6" high, 3 rails, stanchions 5'0" apart. ✓


NONE. ✓

| Particulars of Freeing Arrangements. | | | | | | |
|--------------------------------------|--------------------------|-------------------|-----------------------|------------------|----------------|---------------------|
| | Length of Bulwark | Height of Bulwark | Size of Freeing Ports | Number each side | Area each side | Rule area each side |
| After Well | 5'-0" Tonnage Opening | | 26½" x 13" | One. | 2.39 sq | |
| Forward Well | | | | | | |

State position of each freeing port { After Well:— Height above deck 12" ✓
(F. and A. position and height above deck edge) { Forward Well:—

State whether the freeing ports are fitted with shutters, bars, or rails, and give particulars of such:— .50" steel plate ✓

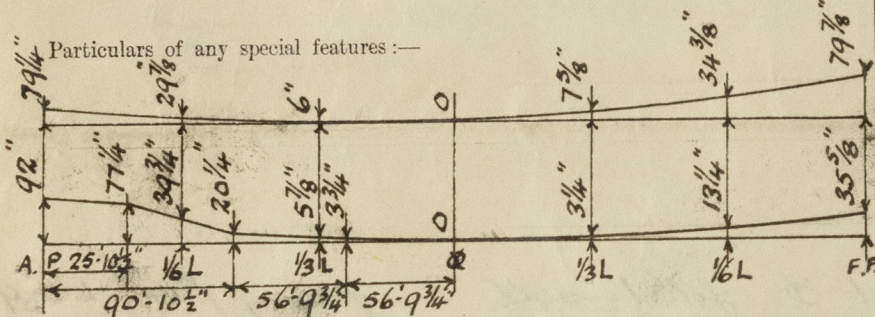
Additional area where sheer is less than standard.



© 2020
Lloyd's Register
Foundation

PARTICULARS OF PROTECTION TO OPENINGS, ETC.

| HATCHWAYS ON FREEBOARD AND SUPERSTRUCTURE DECKS. | | | | | | | | | | |
|---|-----------------------|-----------------|------------------|--------------|------------------|------------------|------------------|------------------|------------------|------------------|
| UPPER DECK | | | | | | SECOND DECK | | | | |
| Description of Hatchway | Nº1 | Nº2 | Nº3 | Nº4 | Nº5 | Nº1 | Nº2 | Nº3 | Nº4 | Nº5 |
| Dimensions of Hatchway | 29'3" x 22' | 32'6" x 22' | 25' x 22' | 32'6" x 22' | 32'6" x 22' | 31'6" x 24' | 35' x 26' | 27'6" x 26' | 35' x 26' | 37'6" x 24' |
| COAMINGS | Height above Deck | 30" ✓ | 30" | 30" | 30" | 30" | 30" | 30" | 30" | 30" |
| | Thickness | 44 ✓ | 44 | 44 | 44 | 44 | 44 | 44 | 44 | 44 |
| | Sides | 7 x 3 = 40 L | 9 x 3 1/2 = 50 L | 7 x 3 = 40 L | 9 x 3 1/2 = 50 L | 9 x 3 1/2 = 50 L | 9 x 3 1/2 = 50 L | 9 x 3 1/2 = 50 L | 9 x 3 1/2 = 50 L | 9 x 3 1/2 = 50 L |
| | Stiffeners | 2-2" dia | 3-2" dia | 2-2" dia | 3-2" dia | 2-2" dia | 2-2" dia | 2-2" dia | 2-2" dia | 2-2" dia |
| HATCH BEAMS | Brackets, Stays | 5 | 5 | 4 | 5 | 5 | 5 | 4 | 5 | 5 |
| | Number | 5-3" x 4-1 1/2" | 5-10" x 4-7" | 4-3" x 5-6" | 5-10" x 4-7" | 5-0" x 6-3" | 5-3" | 5-10" | 5-6" | 5-10" |
| | Spacing | 9 x .62 | 10 x .54 | 10 x .54 | 10 x .54 | 9 x .50 | 10 x .62 | 11 x .62 | 11 x .62 | 10 x .62 |
| | Scantling and Sketch | 20 x .36 | 16 1/2 x .36 | 16 1/2 x .36 | 16 1/2 x .36 | 20 x .36 | 26 x .42 | 28 1/2 x .42 | 26 x .42 | 27 x .42 |
| FORE AND AFTERS | Bearing Surface | 9 x .62 | 10 x .54 | 10 x .54 | 10 x .54 | 9 x .50 | 10 x .62 | 11 x .62 | 11 x .62 | 10 x .62 |
| | Number | 3 1/2 | 3 1/2 | 3 1/2 | 3 1/2 | 3 1/2 | 3 | 3 | 3 | 3 |
| | Spacing | 3 1/2 | 3 1/2 | 3 1/2 | 3 1/2 | 3 1/2 | 3 | 3 | 3 | 3 |
| | Unsupported Lengths | 3 1/2 | 3 1/2 | 3 1/2 | 3 1/2 | 3 1/2 | 3 | 3 | 3 | 3 |
| HATCH COVERS | Scantling* and Sketch | W.P. | W.P. | W.P. | W.P. | W.P. | W.P. | W.P. | W.P. | W.P. |
| | Material | 2 7/8 | 2 7/8 | 2 7/8 | 2 7/8 | 2 7/8 | 2 7/8 | 2 7/8 | 2 7/8 | 2 7/8 |
| | Thickness | F & A | F & A | F & A | F & A | F & A | F & A | F & A | F & A | F & A |
| | How fitted | 4 1/2 x 3 | 5 x 3 | 5 x 3 | 5 x 3 | 4 1/2 x 3 | 5 x 3 | 5 1/2 x 3 | 5 1/2 x 3 | 5 x 3 |
| HATCH COVERS | Bearing Surface | 24" | 24" | 24" | 24" | 24" | 24" | 24" | 24" | 24" |
| | Spacing of Cleats | 2 | 2 | 2 | 2 | 1 | 1 | 1 | 1 | 1 |
| *Are wood fore and afters steel shod at all bearing surfaces? <input checked="" type="checkbox"/> Yes. | | | | | | | | | | |
| Are battens and wedges efficient and in good condition? <input checked="" type="checkbox"/> Yes. | | | | | | | | | | |
| Are tarpaulins in good condition and in accordance with rule requirements? <input checked="" type="checkbox"/> Yes. | | | | | | | | | | |
| Are lashings provided in accordance with rule requirements? <input checked="" type="checkbox"/> Yes. | | | | | | | | | | |



Endorsement at first survey and at surveys for renewal of Certificate:—

The fittings and appliances are in accordance with the particulars shown on this form (or as now modified) and are in good condition.

SMALL HATCHES.
Hatch to Fore Space (on Fore Deck) 5-0" x 4-0" Coaming 24" x 35"
Covers 2 7/8", Cleats 18" x 24", Rest 3", 2 tarpaulins.
UPPER DECK. Hatch to Store Room 5-0" x 5-0" Coaming 12" x 35"
Covers 2 7/8", Cleats 24", Rest 3", 1 tarpaulin.
Escape Hatches to Hor. 1, 2, 4, 5 Holds in Main Deck in Mast House P.O.S.
Openings 24" x 29", Coamings 18" x 25", Steel doors 25" x 40"
Cross Bunkers Hatch 6-0" x 18-0" Coaming 30" x 44"
Covers 2 7/8", Cleats 20" x 23", Rest 3", 2 tarpaulins.
2 Side Bunkers Hatches 17-6" x 5-0", Coaming 30" x 44"
Covers 2 7/8", Cleats 22" x 23", Rest 3", 2 tarpaulins.
Lounging Opening Aft 4-0" x 22-0", Coaming 9" x 3 1/2" x 44" B.A.
Covers 2 7/8", Rest 3".
2ND DECK. Escape Hatches to Hor. 1, 2, 4, 5 Holds (Forward)
Openings 27" x 30", Coamings 24", Steel doors 25".
18 Escape Hatches to Holds 2-0" x 2-0" Coaming 9" x 35".
30" Linged steel W.T. covers.
2 Hatches to Cross Bunkers 5-0" x 5-0", Coaming 9" x 3 1/2" x 44" B.A.
Covers 2 7/8", Cleats 24", Rest 3", 1 tarpaulin.
2 Hatches to Side Bunkers 5-0" x 3-0", Coaming 9" x 3 1/2" x 44" B.A.
Covers 2 7/8", Cleats 24", Rest 3", 1 tarpaulin.
Hatch to Store Aft. 1-9" x 2-0", Coaming 9" x 3 1/2" x 35" B.A.
Covers 2 7/8", Cleats 9" x 12", Rest 3", 1 tarpaulin.
Coal Hatch on Casings Top. 8-0" x 16-0" Coaming 9" x 3 1/2" x 40" B.A. Covers 2 7/8"
Rest 3" Cleats 21" x 23", 2 tarpaulins.



© 2020

Lloyd's Register
Foundation