

APR 17 1939

Index No. 21621
(For London Office only).

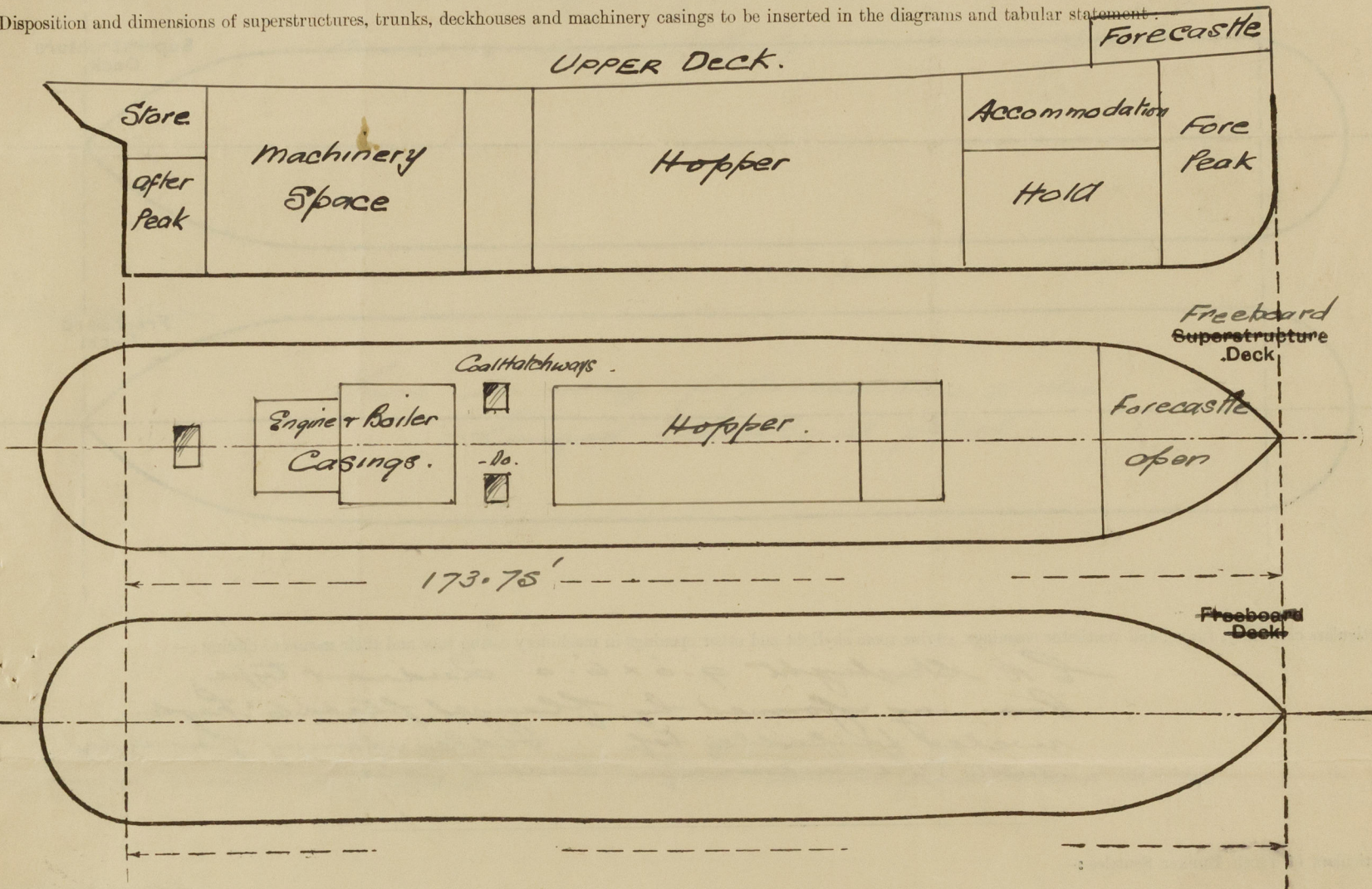
Lloyd's Register of Shipping.

SURVEYS FOR FREEBOARD.

(CONDITIONS OF ASSIGNMENT.)

Ship's Name *"FOREMOST 18"* Port of Survey *Southampton.*
Official Number *132554* Surveyor's Signature *J.H. Gordon*
Nationality and Port of Registry *British, London.* Date of Survey *March - April 1939.*

Disposition and dimensions of superstructures, trunks, deckhouses and machinery casings to be inserted in the diagrams and tabular statement.



Particulars of Superstructures, Trunks, Casings, Deckhouses.

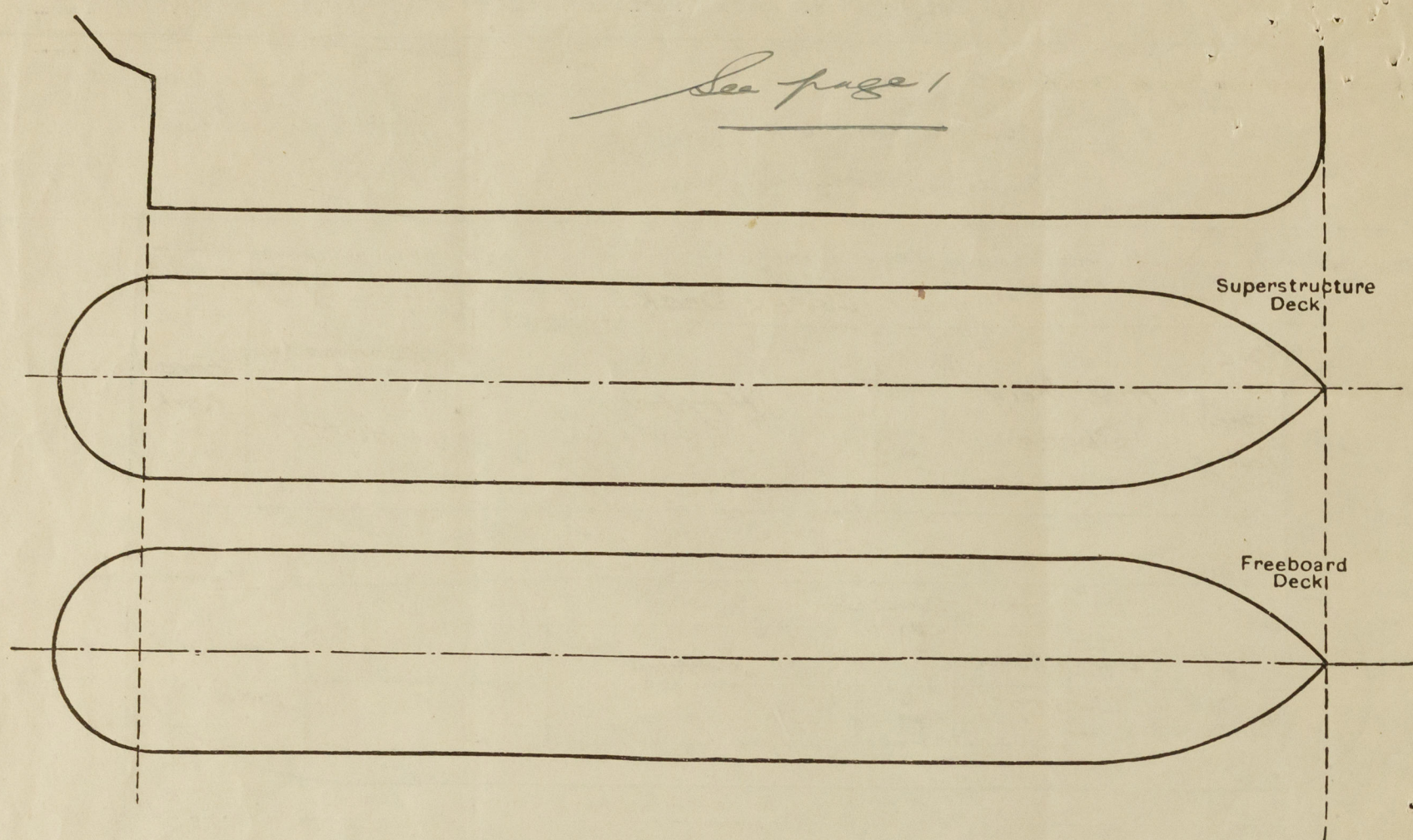
	Coaming	Plating	Stiffeners	Spacing	End Attachments of Stiffeners	Size of Openings	Height of Sills	Height of Casings
Poop Bulkhead								
Raised Quarter Deck Bulkhead ...								
Bridge, After Bulkhead								
Bridge, Forward Bulkhead								
Forecastle Bulkhead	open							
Trunk, Aft								
Trunk, Forward								
Exposed Machinery Casings on Freeboard or Raised Quarter Decks ...	1/4"	1/4"	3 1/2" x 2 1/2" x 5/16"	33"	Bracket	4'-6" x 2'-0"	18"	6'-6"
Exposed Machinery Casings on Superstructure Decks								
Machinery Casings within Superstructures not fitted with Class I Closing Appliances								
Deckhouses on Flush Deck Ships ...								

Particulars of Closing Appliances (state if capable of being manipulated from both sides).

Poop Bulkhead	
Raised Quarter Deck Bulkhead ...	
Bridge, After Bulkhead	
Bridge, Forward Bulkhead	
Forecastle Bulkhead	open
Exposed Machinery Casings on Freeboard or Raised Quarter Decks ...	Brazed steel door operated from both sides.
Exposed Machinery Casings on Superstructure Decks	
Machinery Casings within Superstructures not fitted with Class I Closing Appliances	
Deckhouses on Flush Deck Ships ...	

PARTICULARS OF PROTECTION TO OPENINGS, ETC.

The following diagrams should be used to indicate the positions of cargo and coaling hatchways, gangway, cargo and coaling ports, ventilators, companionways, etc., which would affect the seaworthiness of the ship:—



Particulars of fiddle, funnel and ventilator coamings, engine room skylight and other openings in machinery casing tops and their means of closing:—

E.R. Skylight 9'-0" x 6'-0" Luderant type.
Coaming formed by flanged plate 6" high.
riveted to fiddle top. Fiddle opening provided
with permanently attached cover.

Particulars of Flush Bunker Scuttles:—

Nil.

Particulars of Companionways:—

{ Two of steel. Coaming 24" high. In good condition
Is accommodation forward. Steel hinged doors 4'-0" x 1'-11" of mild
from both sides. Fiddle opening provided
2 Skylights in way of companionways renewed of steel.

Particulars of Ventilators in exposed positions on freeboard and superstructure decks:—

On Forecastle Deck:— 1- 7" dia. 3'-0" high x 1/4"

On Freeboard Deck:—

Forward Hopper Well:— 4 (2P+2S) Mushroom vents 6" dia x 8" x 1/4" to accom-
2 (1P+1S) 12" dia x 36" x 1/4" to fore hold
1 Port 10" dia x 36" x 1/4" to accom-
1 Starb. 8" x 36" x 1/4"

Aft of Hopper Well:— 4 (2P+2S) G.N type 4" dia 10" high To bunkers
On Fiddle Top 2 (1P+1S) 30" dia x 48" x 3/16" to Boiler Room To after peak

On E.R. Casing 2 (1P+1S) 18" dia x 33" x 3/16" to Engine Room

Sufficient closing appliances provided

Particulars of Air Pipes in exposed positions on freeboard, raised quarter, or superstructure decks:—

G.N. air pipes 4" x 16" high (Castings)

Sufficient closing appliances provided

Particulars of Gangway, Cargo and Coaling Ports:—

Nil

Particulars of Scuppers and Sanitary Discharge Pipes:—

Sanitary discharge 4" pipe with storm valves
in way of forecabin.
Deck scuppers 4" pipe, no valves fitted.

Particulars of Side Scuttles:—

Two in way of forecabin 8" dia
hinged deadlight fitted.

Vertical distance of Sill of lowest Side Scuttle above top of keel

None below freeboard deck

Particulars of Guard Rails:—

Stanchions 3" x 1/2" round iron with 2 eyes for
1/4" chain

Particulars of Gangways, Lifelines, etc.:—

The hopper and beam forms a permanent
gangway with rails across the hopper well.

Particulars of Freeing Arrangements.

	Length of Bulwark	Height of Bulwark	Size of Freeing Ports	Number each side	Area each side	Rule area each side
After Well	64'-10"	36"	1'-6" x 3'-0"	3	13.5 sq ft	13.56 sq ft
Forward Well	30'-0"	33"	1'-6" x 3'-0"	2	9.0	9.5 sq ft

State position of each freeing port ... (After Well:— 2'-3", 29'-0" - 49'-6" from aft hopper bulkhead
(F. and A. position and height above deck edge) Forward Well:— 2'-0", 10'-0" from hopper bulkhead

State whether the freeing ports are fitted with shutters, bars, or rails, and give particulars of such:— Bars

Additional area where sheer is less than standard.

PARTICULARS OF PROTECTION TO OPENINGS, ETC.

HATCHWAYS ON FREEBOARD AND SUPERSTRUCTURE DECKS.									
Description of Hatchway		No after Stone		Beamen Hatchways					
Dimensions of Hatchway		20' x 3-0"		3-6 x 4-0					
COAMINGS	Height above Deck	18"		24"					
	Thickness	5/16"		3/8"					
	Sides								
	Ends								
HATCH BEAMS	Stiffeners								
	Brackets, Stays								
	Number								
	Spacing								
FORE AND AFTERS	Scantling and Sketch	nil		nil					
	Bearing Surface								
	Number								
	Spacing								
HATCH COVERS	Unsupported Lengths	nil		nil					
	Scantling* and Sketch								
	Bearing Surface								
	Material	Wood		Wood					
HATCH COVERS	Thickness	3"		3"					
	How fitted	Carling		Carling					
	Bearing Surface	3"		3"					
	Spacing of Cleats	12"		26"					
Number of Tarpaulins		2		2					
*Are wood fore and afters steel shod at all bearing surfaces? nil									
Are battens and wedges efficient and in good condition? yes									
Are tarpaulins in good condition and in accordance with rule requirements? yes									
Are lashings provided in accordance with rule requirements? yes									

Particulars of any special features:—

Endorsement at first survey and at surveys for renewal of Certificate:—

The fittings and appliances are in accordance with the particulars shown on this form (or as now modified) and are in good condition.

L. H. Bowden

