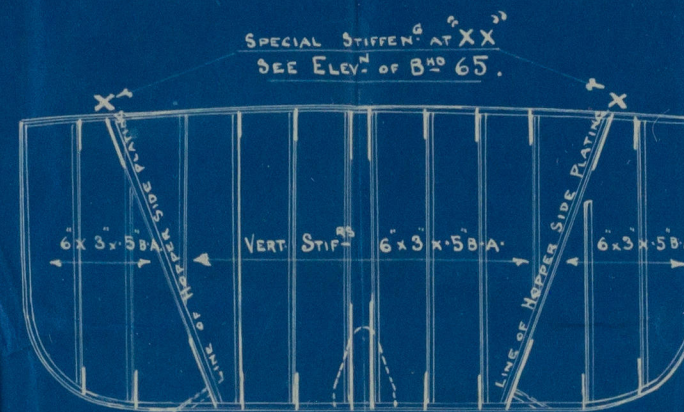
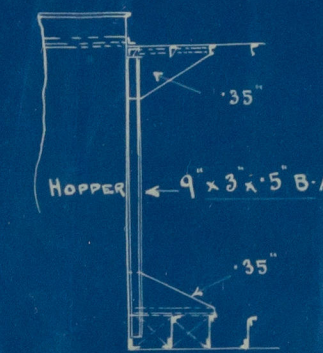


FERGUSON BROS.
SHIPBUILDERS & ENGINEERS.
PORT-GLASGOW.

PROFILE & DECK PLAN.
SINGLE SCREW HOPPER BARGES-N^{os} 197-203.
To CLASS "100 A.I." AT LLOYDS,
HOPPER BARGE FOR CHANNEL PURPOSES.
DIMEN^s: 172'-0" B-P. x 32'-0" x 13'-3" DEPTH M^{ld}.
Scale: $\frac{1}{8}" = 1 \text{ foot.}$



SECTION OF HOPPER END B^{ld} 35 & 65
TO SHOW POSITION OF VERT^l STIFF^s.



ELEVATION SHOWING STIFFEN^g OF B^{ld} 65
IN LINE OF HOPPER SIDE PLATING.
HOPPER B^{ld} ON FR 35 IS SIMILAR.

WT. B^{ld} 35
OR FR. 35
FRAME 4"x4"x4" SINGLE ANGLE.
BEAM ANGLE TO DECK, 3"x3"x3" SINGLE ANGLE.
B^{ld} STIFF^s 5"x3"x3/4" ANGLE, SPACED 30"
APART VERT^l ON AFT SIDE & BRACK^l TO DECK ONLY
PLATING .28" & .26".

ENGINE & BOILER CASING.

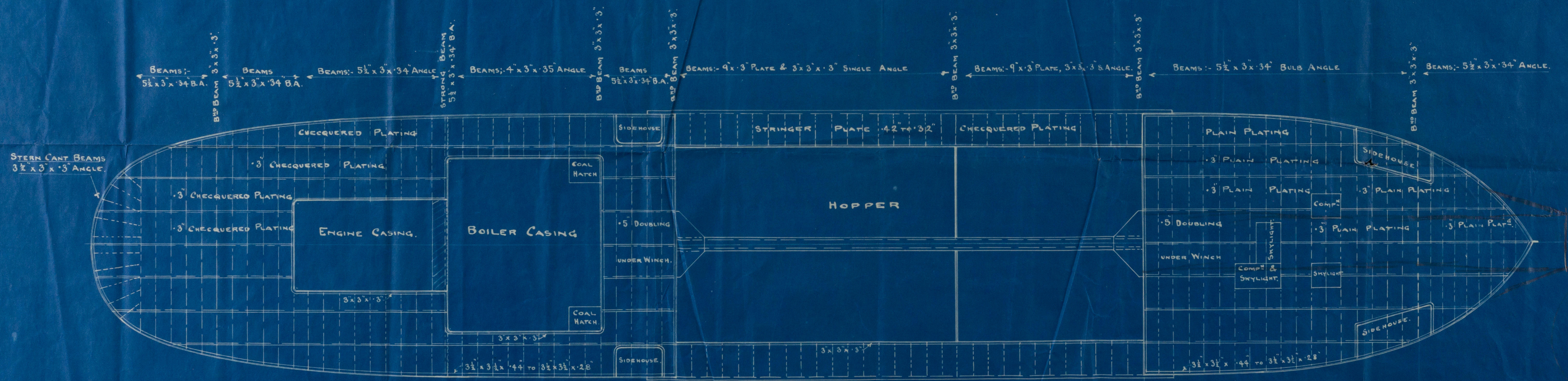
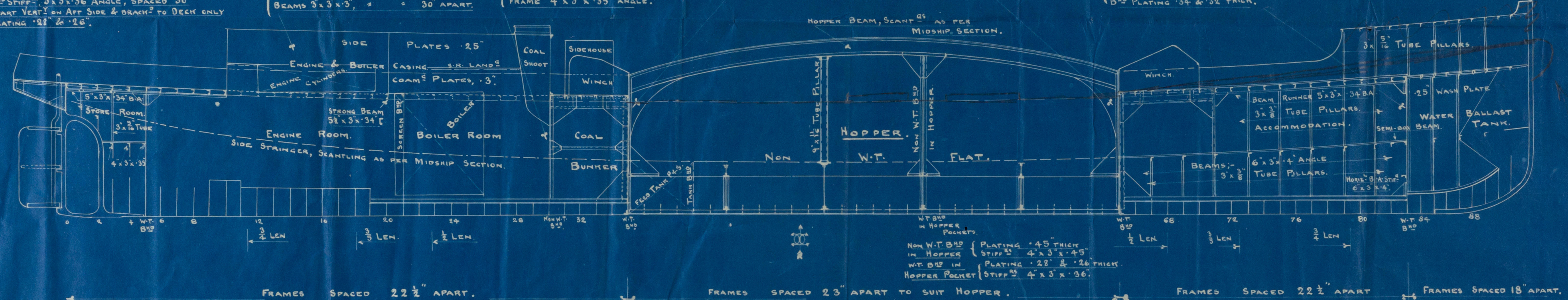
COAM^g PLATES .3" SIDE & TOP PLATES .25"
DECK ANGLE 3"x3"x3" TOP ANGLE 2 1/2"x2 1/2"x25"
STIFF^s 3"x3"x3" SPACED ABOUT 30" APART VERT^l
BEAMS 3"x3"x3" " " 30" APART.

COAL BUNKER B^{ld} N^o 30, .3" PLATES,
WITH STIFF^s 3"x2 1/2"x3" SPACED 30" APART VERT^l
FRAME 4"x3"x3/4" ANGLE.

HOPPER END B^{ld} 35 & 65
B^{ld} FRAME, 4"x4"x4" SINGLE ANGLE
BEAM ANGLE TO DECK, 3"x3"x3" SINGLE.
PLATING .5" THICK.
STIFF^s 6"x3"x3/4" BULB ANGLE, SPACED
30" APART VERT^l & BRACK^l TOP & BOTTOM.

B^{ld} FRAME, 4"x4"x4" SINGLE ANGLE
BEAM ANGLE TO DECK, 3"x3"x3" SINGLE.
B^{ld} STIFF^s, 6"x3"x3/4" BULB ANGLE, SPACED
24" APART VERT^l & BRACK^l TO DECK ONLY.
HORIZ^l STIFF^s 6"x3"x3/4" BA, PLACED AS SHOWN.
& BRACKETED TO SHELL.
B^{ld} PLATING .34" & .32" THICK.

FORECASTLE DECK PLATING, .30" CHECK^l STEEL.
BEAMS, 5 1/2"x3"x3/4" ANGLE.
STRINGER ANGLE, 3"x3"x28'.



See plan of alterations
with original
report for forecast 18'



© 2020

Foundation

005701-007 116-0303

2/2

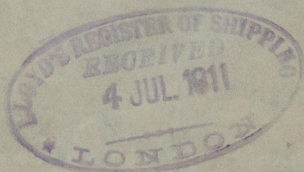
FERGUSON BROTHERS, PORT-GLASGOW.

ENCLOSURE TO

Lloyd's Register
Office. Greenock.
Foundation

Cop. Profile Deck Plans.
Ferguson Bros. 188.

S. S. P. L. A. Hopper No 10
Greenock Report No. 16063



© 2020

Lloyd's Register
Foundation

002701-002710-0303 1/2