

18 JUN 1948



*Approved
Confirmed
6/7/48*



Rudder Port
5" Galv. Pipe

4 1/2" Round

Steel Coupling Shrunk,
Keyed, & Welded to Stock

Split Set collar
to take upward thrust

7/8" Galv. Bolts

5 x 7/8" Arms Welded
to Stock

4 1/2" Square Steel Stock.

4" Dia.
3 1/2" Pintal depth

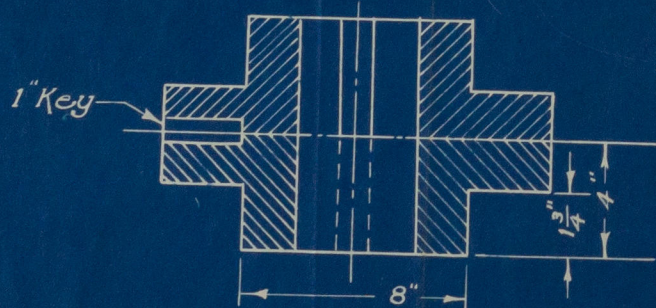
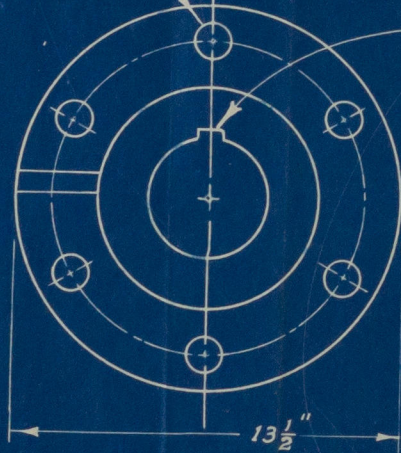
Galv. Iron Dovetail

Keel 12" x 13"

6" x 12" Hardwood Shoe.

Galv. Iron Skeg

6 - 1 1/4" Fitted Bolts
1 3/8" Key



Detail of Coupling
Scale 2" = 1 Ft.

$$A = 4.25 \times 7 = 29.8$$

$$R = 2.13$$

$$V = 15 \text{ only}$$

$$S = 2.6 \sqrt{29.8 \times 15 \times 2.13} = 2.6 \sqrt{4580}$$

$$= 2.6 \times 67.6 = 175.6$$

$$= 432"$$

John Etherington, Ltd.,
Shelburne, N.S.

RUDDER PLAN
FOR HUDSON BAY BOAT

Scale 1/2" = 1 Ft.

002701-002710-0187

Montreal.

R

Rudder.

John Etherington, Ltd

No. 2.

6.7.48.

"Fort Heane" ★

RECORDS DEPT.,
LONDON

4

*Etherington L.
Rudder.
6.7.48.*

002701-002710-0187



© 2020
Lloyd's Register
Foundation