

TENSILE STRENGTHS, TESTS, ETC.

BOILERS TO BE CONSTRUCTED OF BOILER QUALITY STEEL, EXCEPT THE TUBES WHICH ARE TO BE OF LAP-WELDED IRON.

ALL BOLTS TO BE DRILLED IN PLACE AFTER BENDING.

TENSILE STRENGTH OF SHELL & BUTTSTRAPS, 30-34 TONS/IN², ELONGATION NOT LESS THAN 25% ON STANDARD 8" TEST PIECE.

TENSILE STRENGTH OF GIRDERS 28-32 TONS/IN², ELONGATION NOT LESS THAN 25% IN 8".

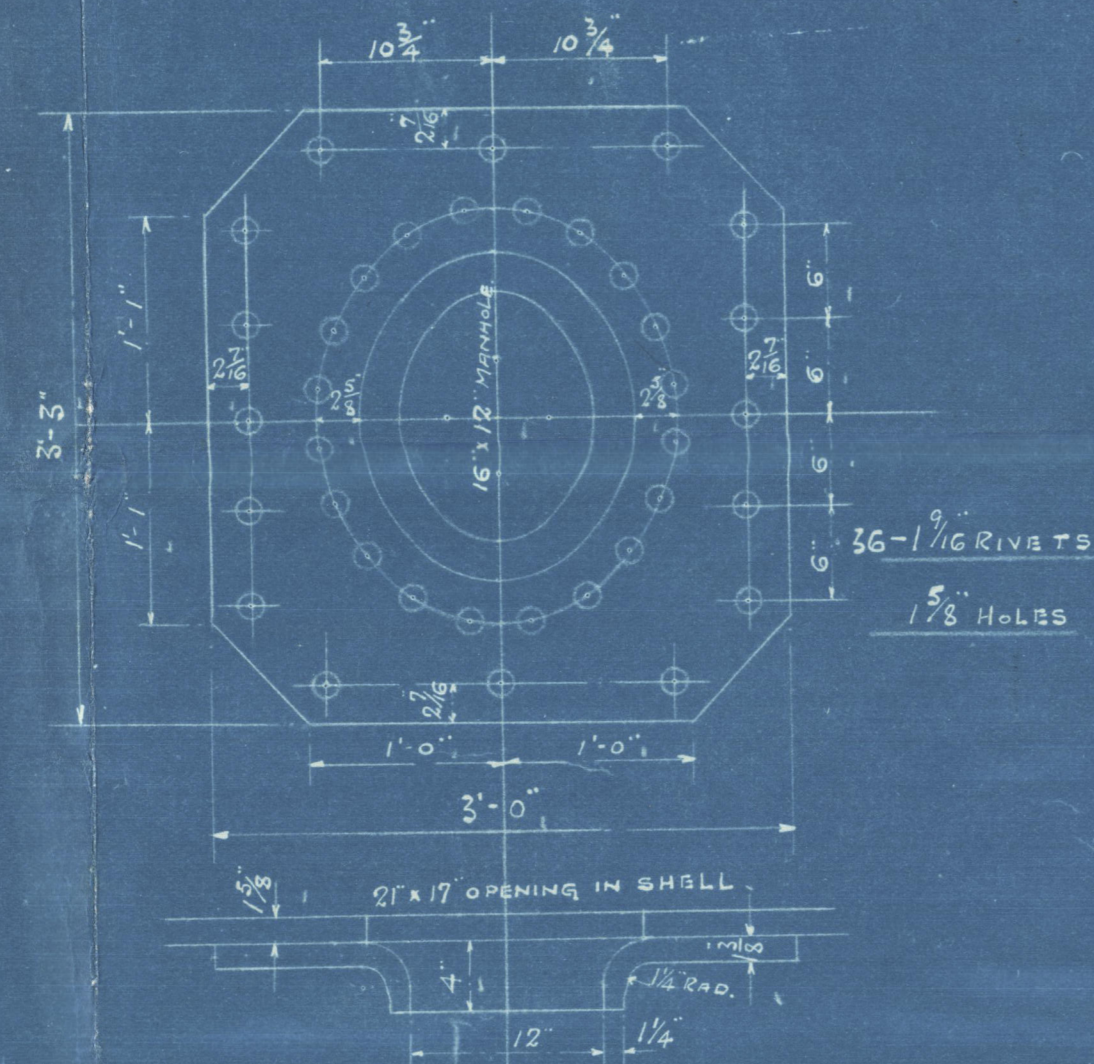
TENSILE STRENGTH OF ALL OTHER PLATES & FURNACES, 26-30 TONS/IN², ELONGATION NOT LESS THAN 25% IN 8".

TENSILE STRENGTH OF LONGITUDINAL STAYS, 28-32 TONS/IN².

TENSILE STRENGTH OF SCREWED STAYS, 26-30 TONS/IN².

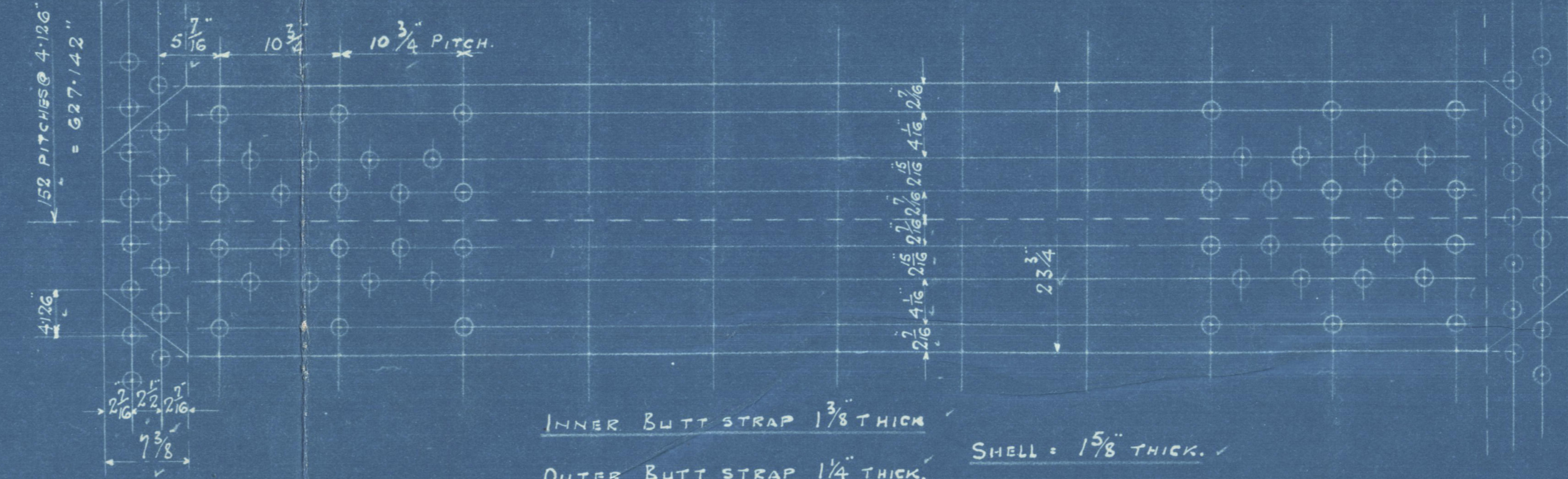
BOILERS TO PASS ALL TESTS & REQUIREMENTS OF LLOYDS, BRITISH CORPORATION, AND REGISTRO NAZIONALE ITALIANO, FOR A WORKING PRESSURE OF 220 LBS/IN².

TEST PRESSURE = 350 LBS/IN².



MANHOLE COMPENSATING RING.
FITTED WITH 1/2" THICK DOOR.

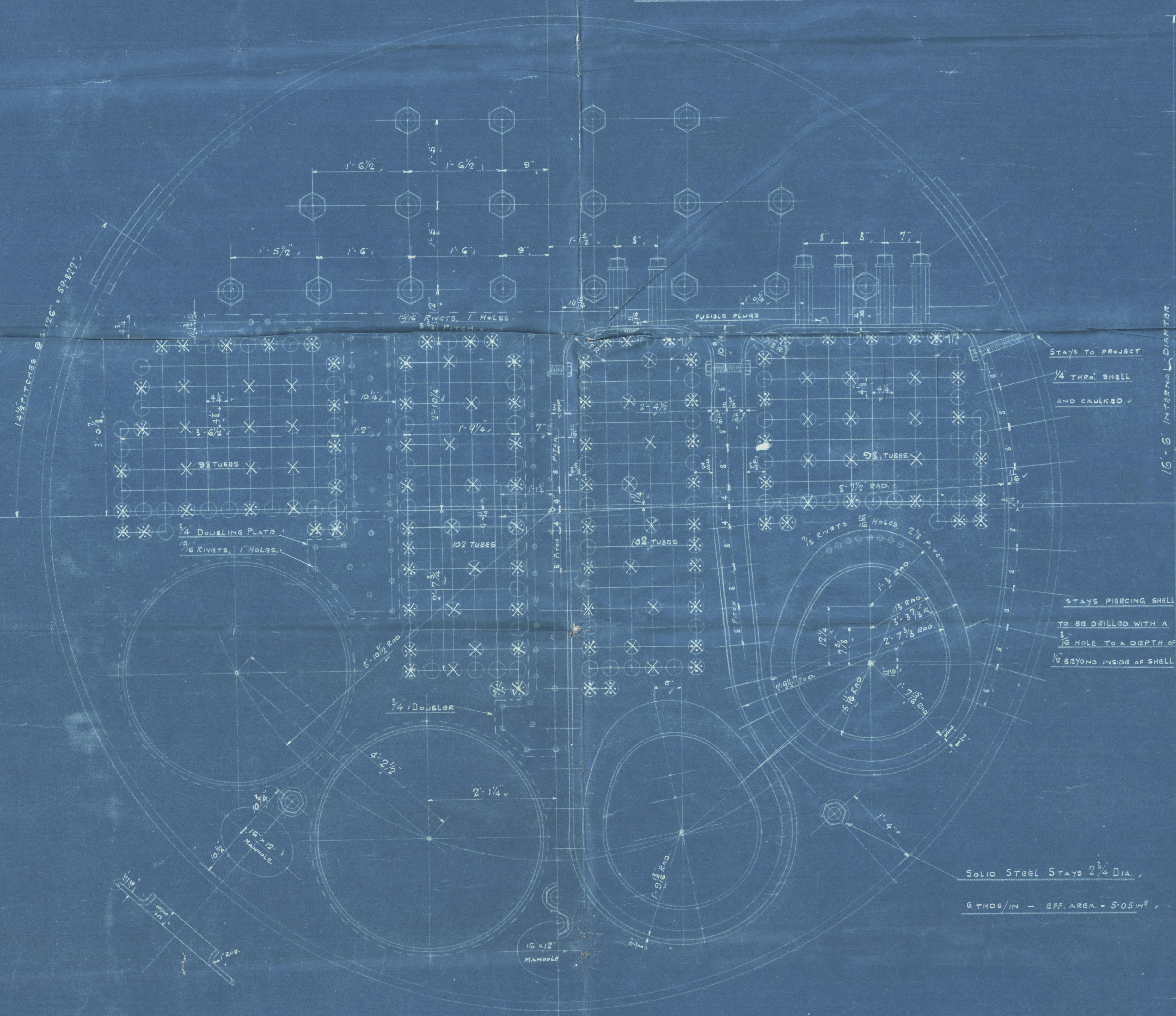
PARTICULARS OF JOINTS		
TYPE	LONGITUDINAL	CIRCUMFERENTIAL
	TEELS ENDS	DOUBLE RIVETS
DIA. OF RIVET HOLES	1 1/8"	1 1/8"
PITCH	10 1/4"	4-126"
% ARE PLATE	84.8	60.5
% ARE RIVETS	85.3	47.4
COMBINED % ARE	85.3	—



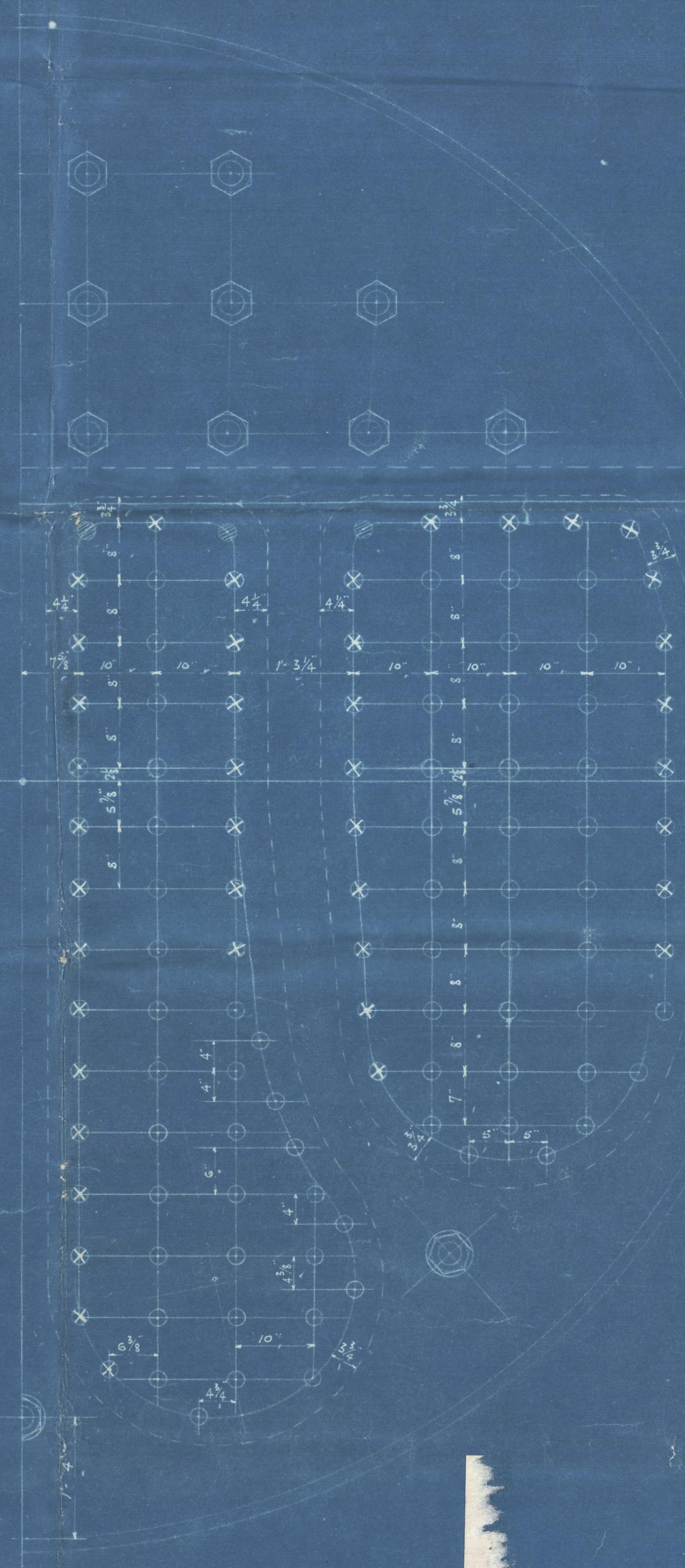
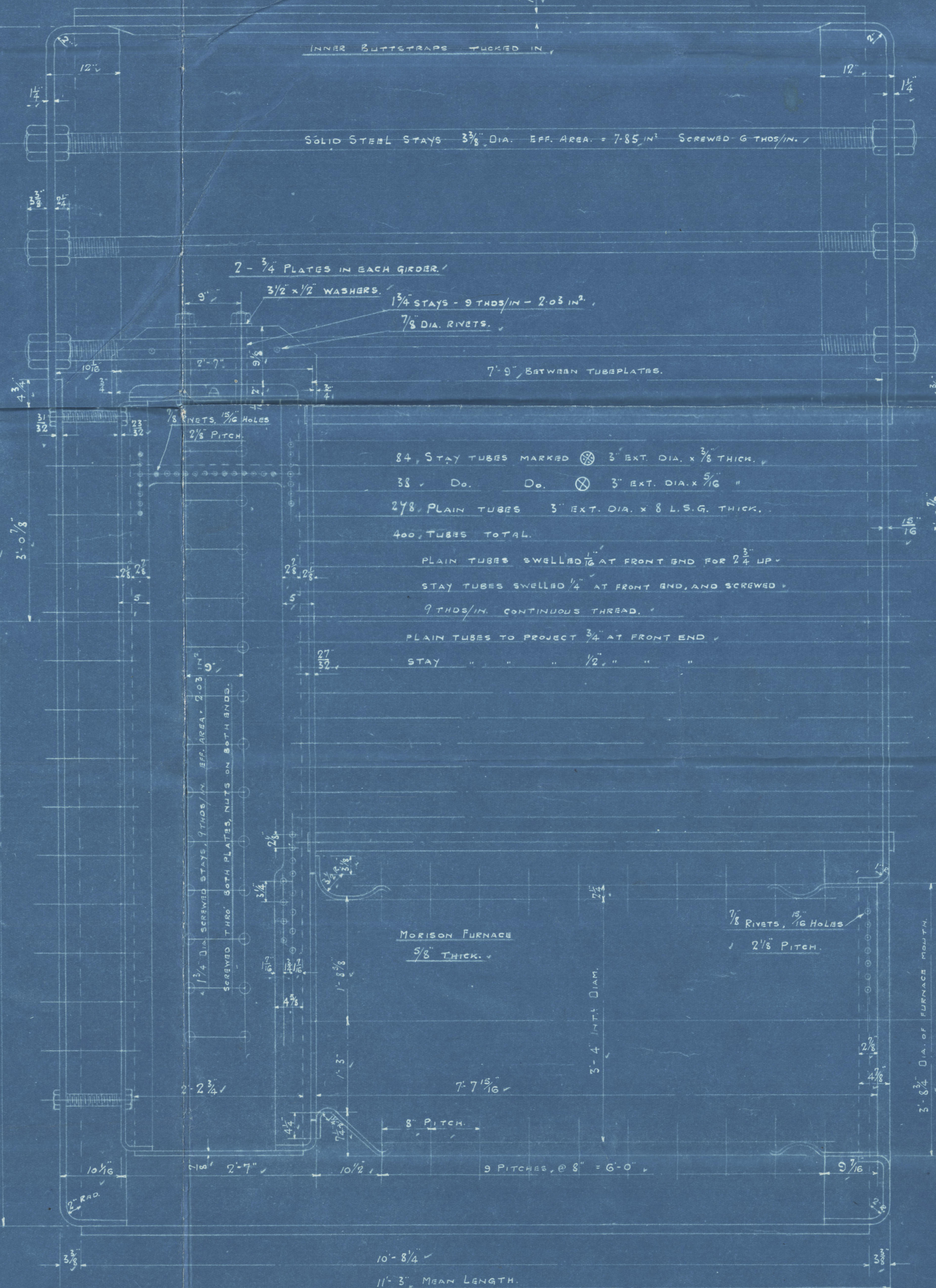
PARTICULARS OF SURFACES	
HEATING SURFACE OF TUBES	2450 sq ft
Do. OF FURNACES	364 "
Do. OF COMBUSTION CHAMBERS	346 "
TOTAL HEATING SURFACE (OIL FIRED)	3140 "
GRATE SURFACE (6" G. BARS)	73.5 "
RATIO:- HEATING SURFACE	42.75
GRATE Do.	—

HEATING SURFACE OF 7 D.E. & 2 S.E. BOILERS, 50,240 sq ft.

GRATE SURFACE OF 7 D.E. & 2 S.E. BOILERS = 1,170 sq ft.



16" - 6" INTERNAL DIAMETER



STAYS THUS @ 2 1/4" DIA.

9 THDS/IN. EFF. AREA = 3.49 IN²

SCREWED THROUGH BOTH PLATES.

NUTS ON BOTH ENDS.

STAYS THUS @ 2" DIA.

9 THDS/IN. EFF. AREA = 2.71 IN²

SCREWED THRU BOTH PLATES.

NUTS ON BOTH ENDS.

STAYS THUS @ 1 3/4" DIA.

9 THDS/IN. EFF. AREA = 2.03 IN²

SCREWED THRU BOTH PLATES.

NUTS ON BOTH ENDS.

ALL SCREWED STAYS ON

BACK OF BOILER TO BE DRILLED

ON OUTSIDE ONLY WITH A 1/8"

HOLE, TO A DEPTH OF 1/2" BEYOND

INSIDE OF END PLATE.

Eng. N° 640

S.E. BOILERS



LLOYDS



DRAWING N° 15492

000190-002300-0005

N. Berranore 960.

Salmon.

$\frac{5}{5}$ N. 640

2 Single Enda Boilers

W.P. 220 lbs.

Test: 380 lbs.

4-577

N^o 16751

Lloyds test

380 lbs

W.P. 220 "

H.Y.B. 20-3-25

N^o 16751

N^o 16754

Lloyds test

380 lbs

W.P. 220 "

J.S.C. 24-3-25

Conte Biancamano

GLASGOW REPORT No. 45140²⁹⁶⁰₁₂₀

H.M. Box 2690

© 2021

~~D.R. 2877~~

Lloyds Register
Foundation

002590-002700-0105