

- S. S. N^o ~~100~~ 107

STERN FRAME & RUDDER

- STEEL SCREW TRAWLER -

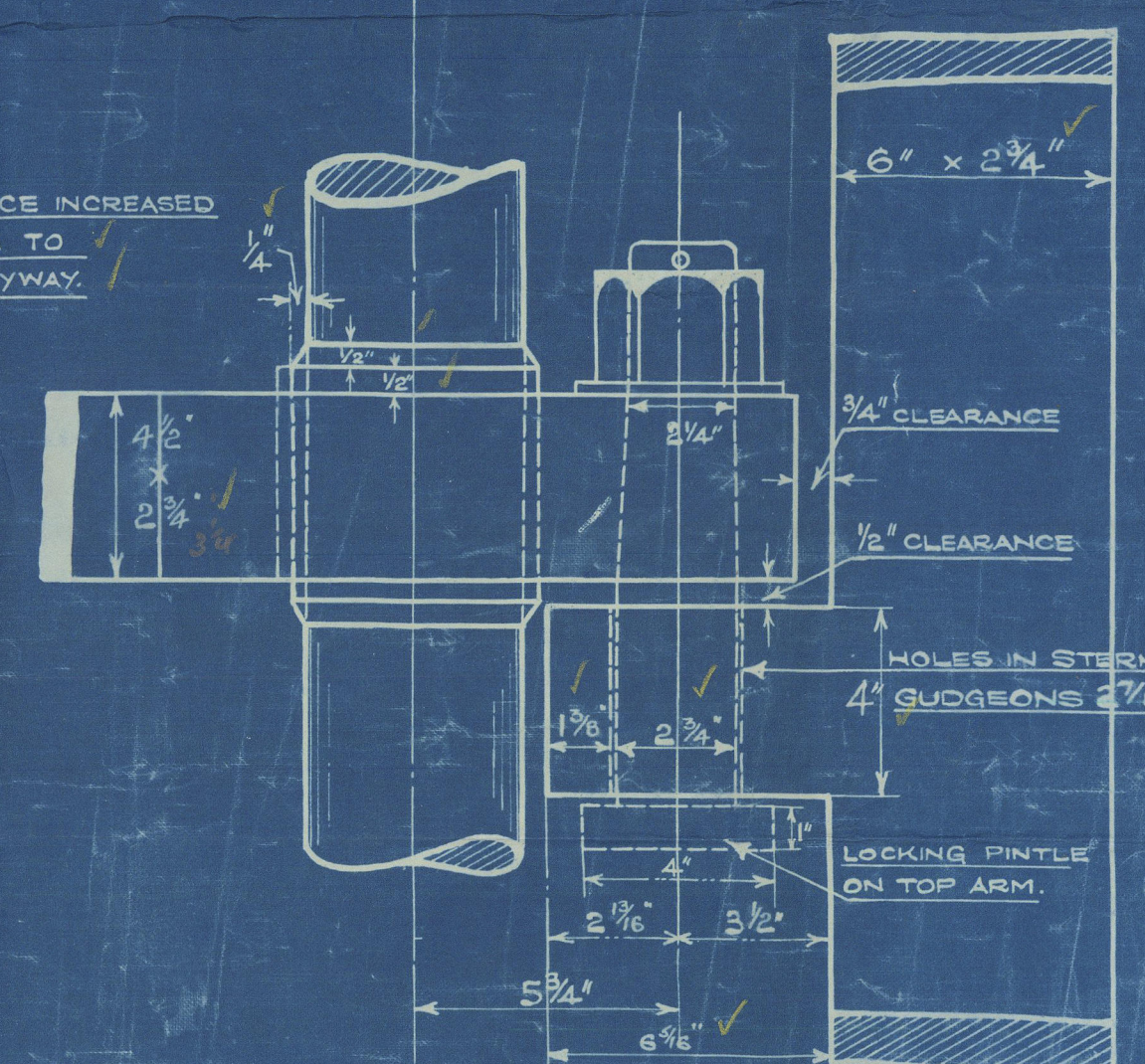
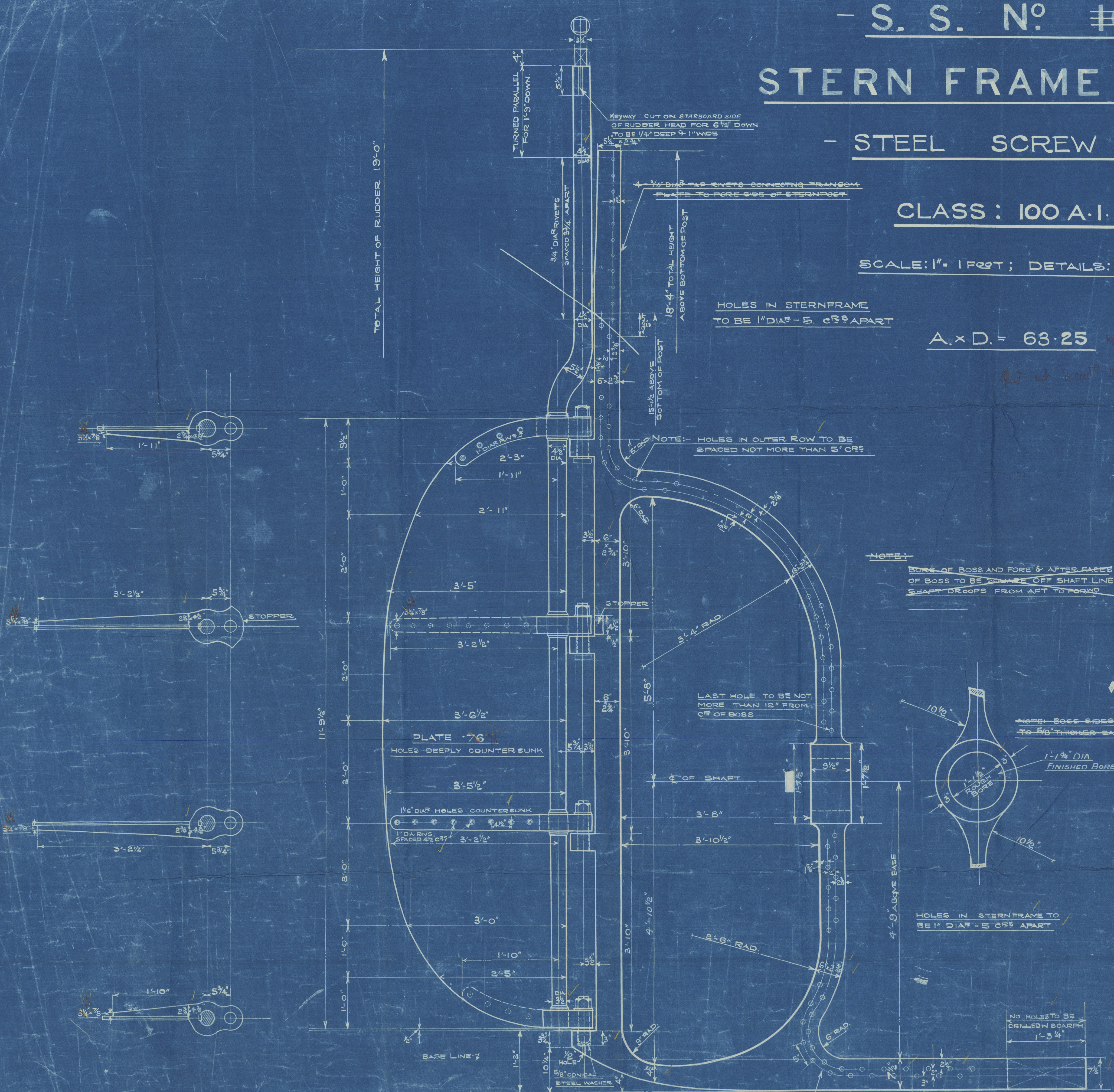
CLASS : 100 A.I. LLOYDS

SCALE: 1" = 1 FOOT; DETAILS: 3" = 1 FOOT

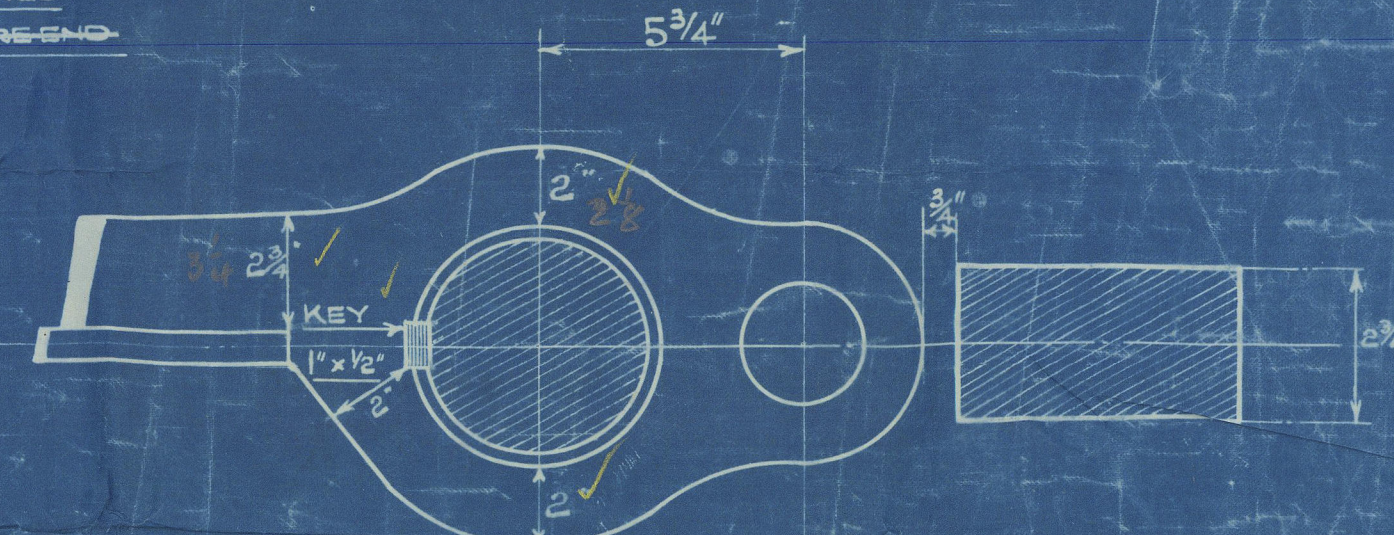
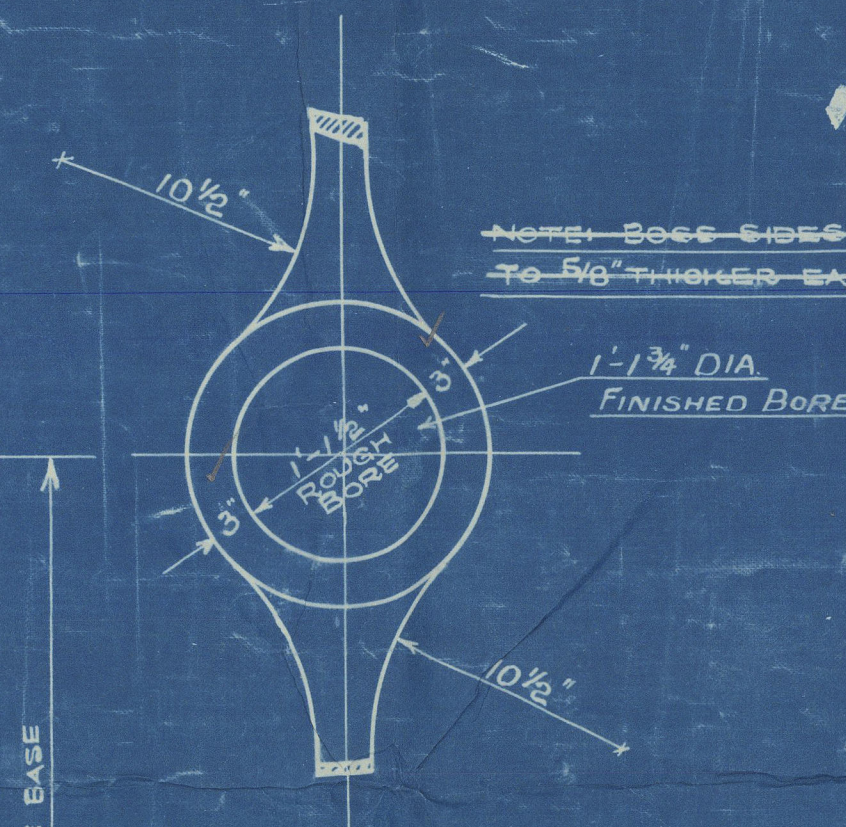
A x D. = 63.25

Spd not exceed 9 knots

TOTAL HEIGHT OF RUDDER 19'-0"

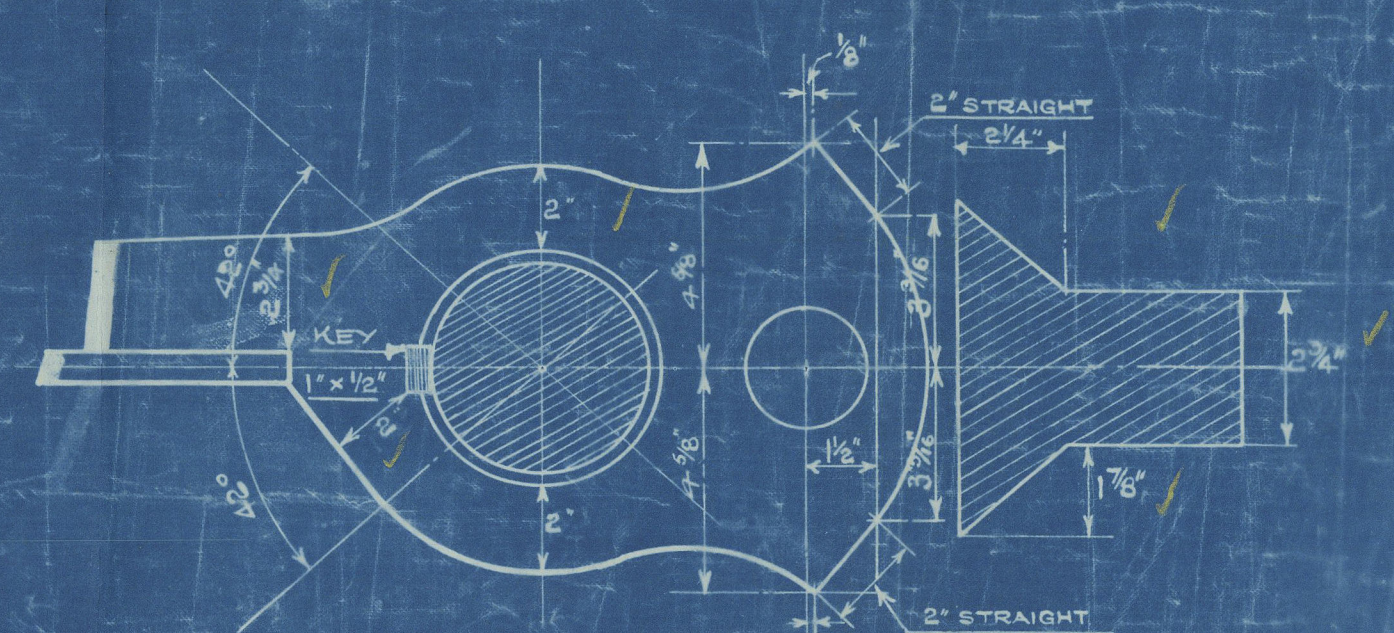


NOTE: BOSS OF BOSS AND FORE & AFTER FACES OF BOSS TO BE ~~SCARF~~ OFF SHAFT LINE. SHAFT DROOPS FROM AFT TO FORWARD.



DETAIL OF PINTLE & GUDGEON

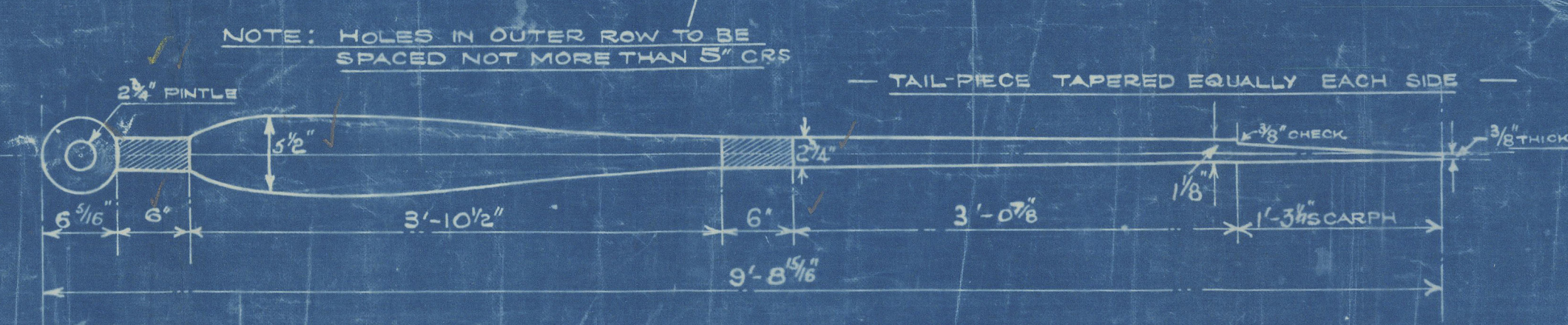
SCALE: 3" = 1 FOOT



DETAIL OF PINTLE & GUDGEON

SHOWING STOPPER ON POST & RUDDER

SCALE: 3" = 1 FOOT



NOTE: HOLES IN OUTER ROW TO BE SPACED NOT MORE THAN 5\"/>

TAIL-PIECE TAPERED EQUALLY EACH SIDE

15-1-24

W. L. & S. L. LLOYDS
ENGINEERING OFFICE
27, Abchurch Lane, London, E.C. 4

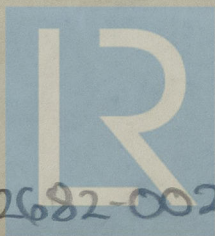
N^o. 107.

J. Lewis & Sons L^d.

Green Frame & Rudder.

Sc. K. "FORT DEE"

abu. Report. 15684.



© 2021

Lloyd's Register

002682-002689-0080

Foundation