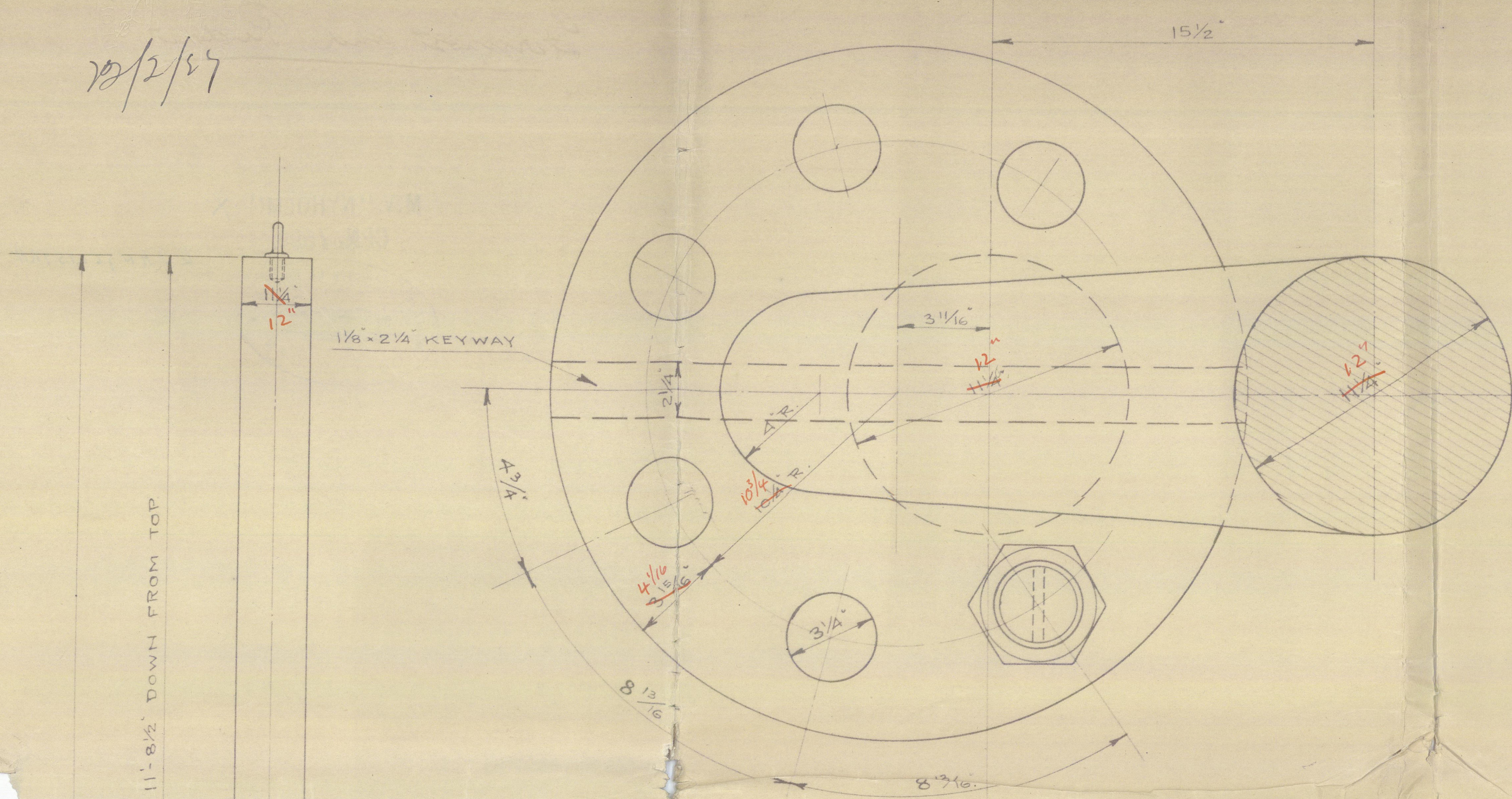
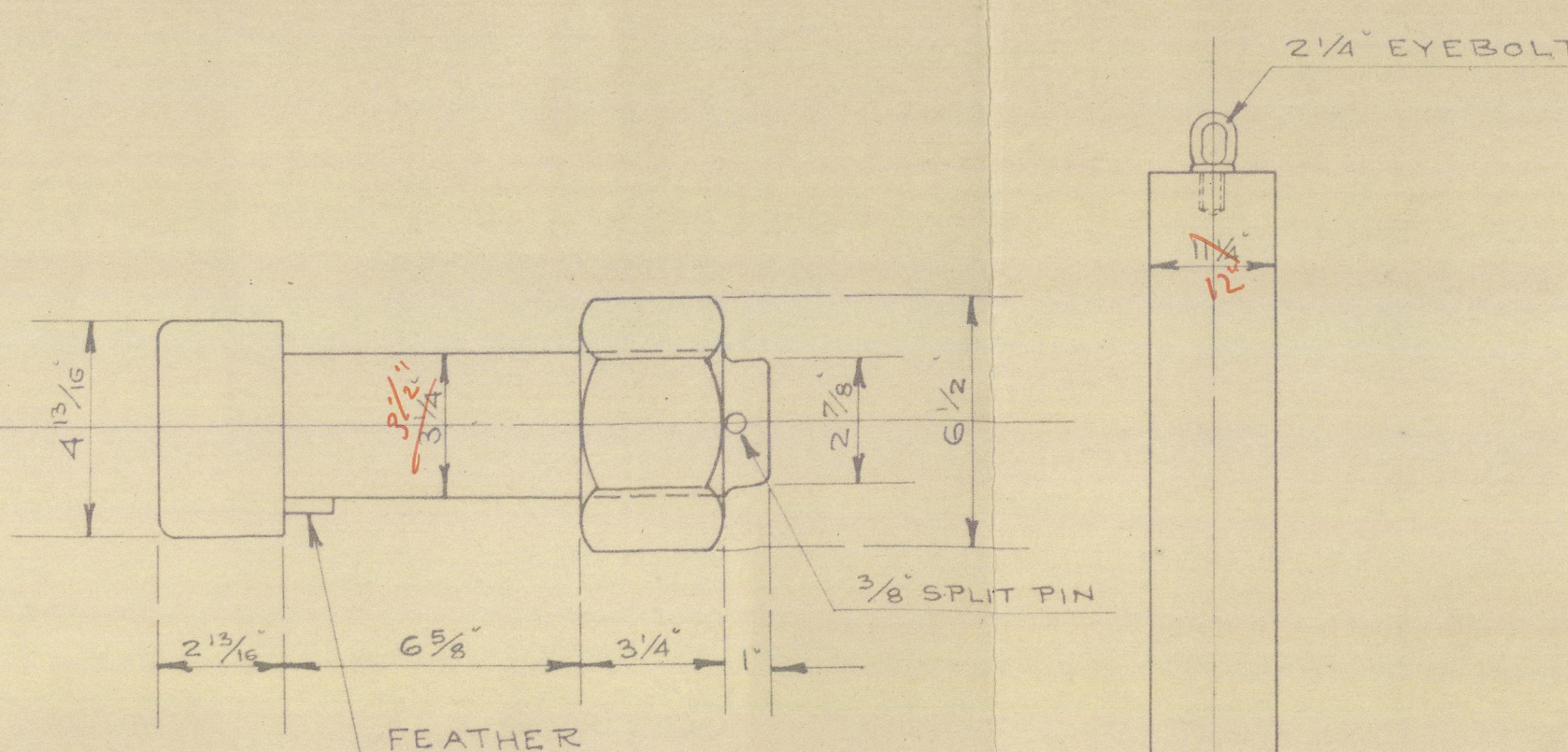


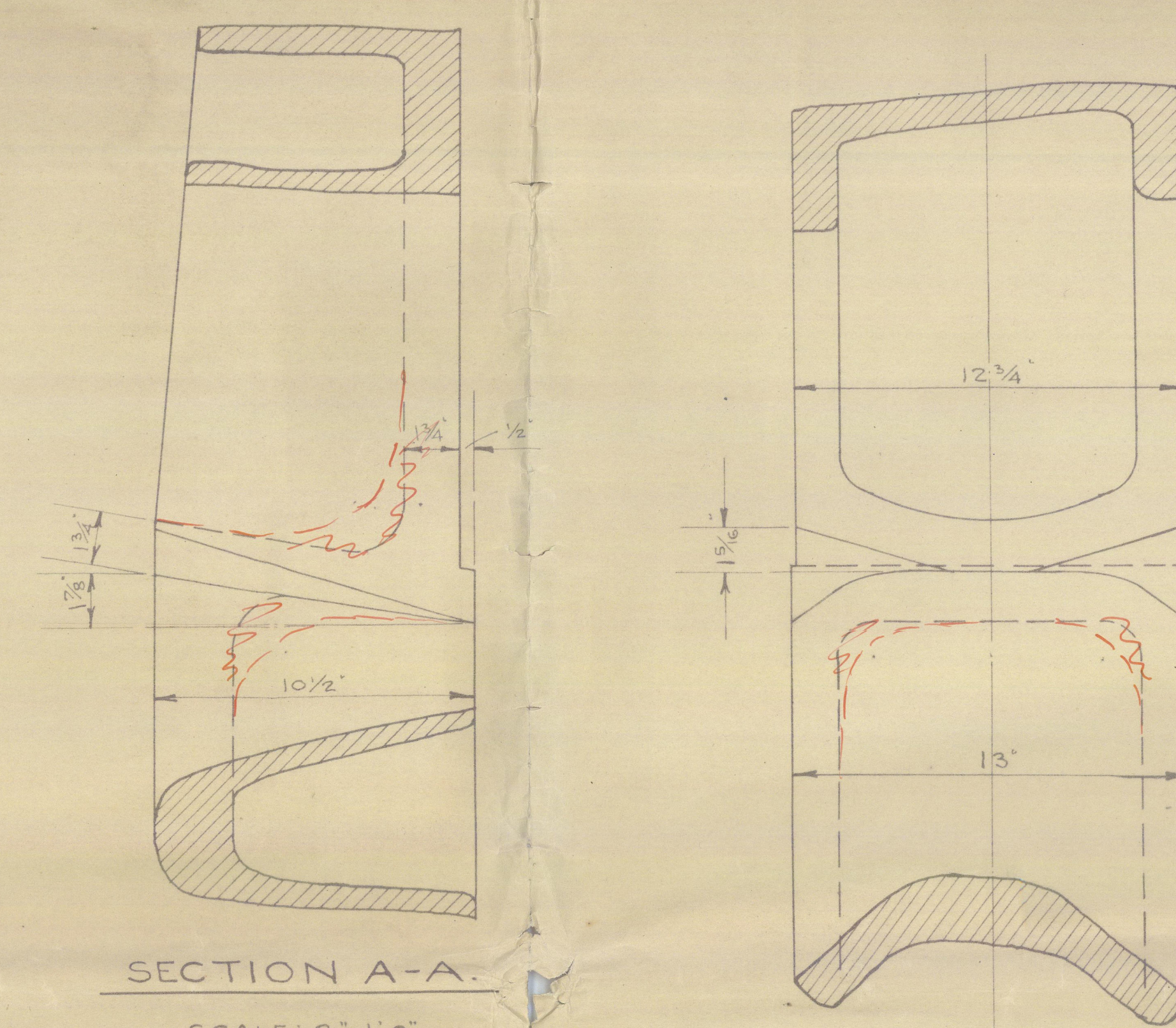
SKETCH OF HORIZONTAL COUPLING.  
SCALE: 3"=1'-0"



ROUND-HEADED BOLTS WITH SPLIT PIN.  
6 OFF FOR HORIZONTAL COUPLING.  
SCALE: 3"=1'-0"



SECTION A-A.  
SCALE: 3"=1'-0"

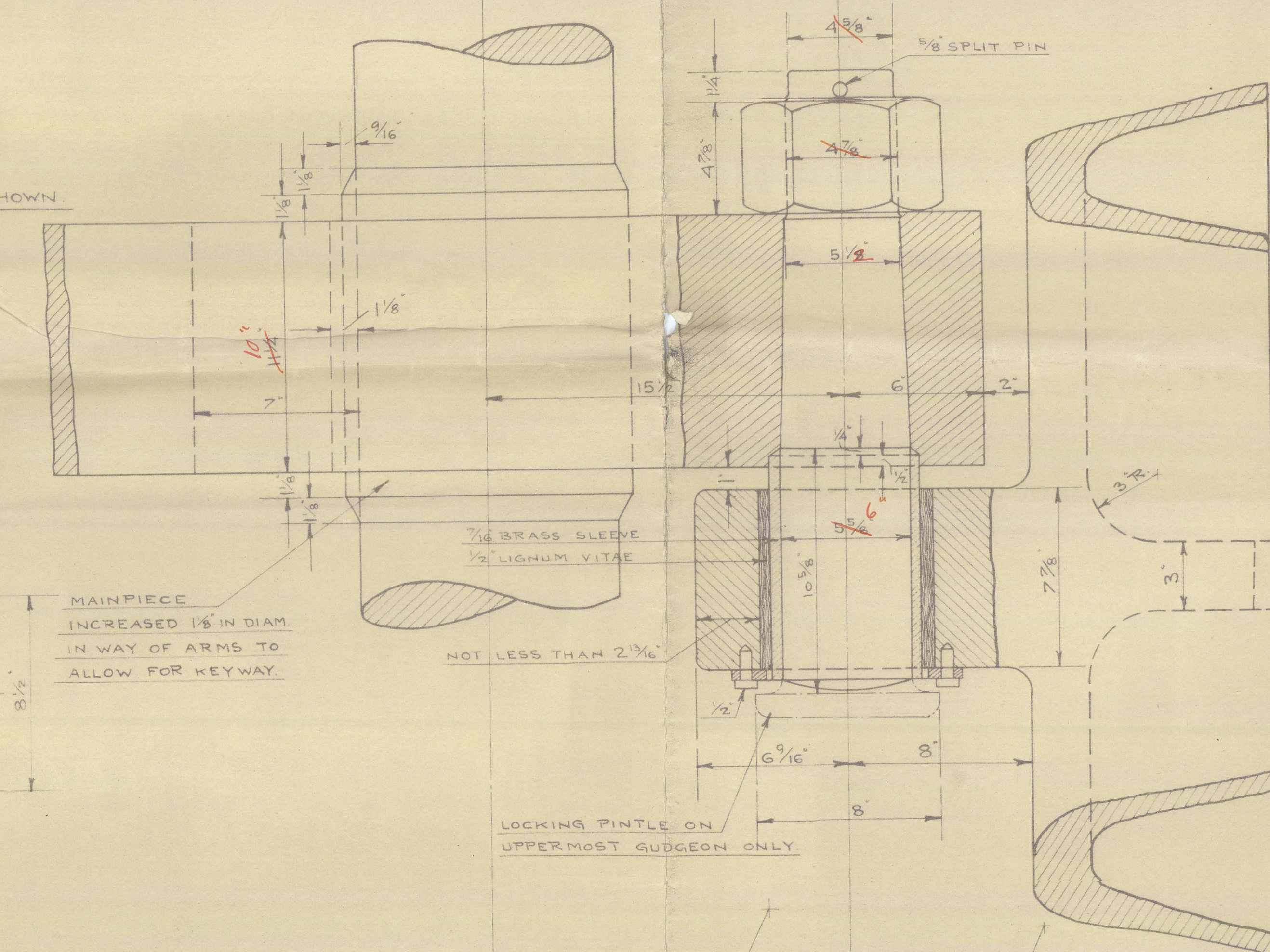


BUILDING NO 27.  
STERNPOST AND RUDDER.

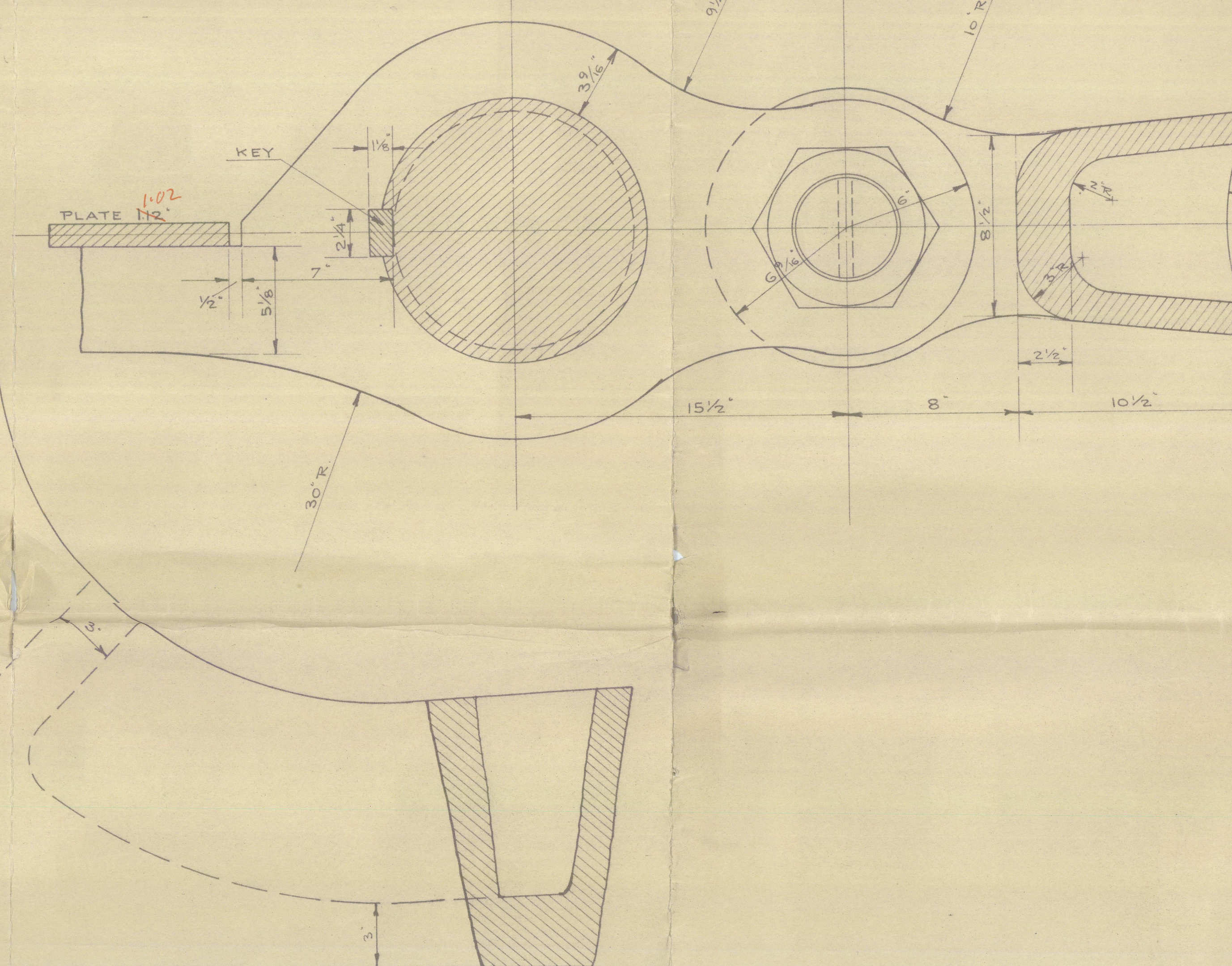
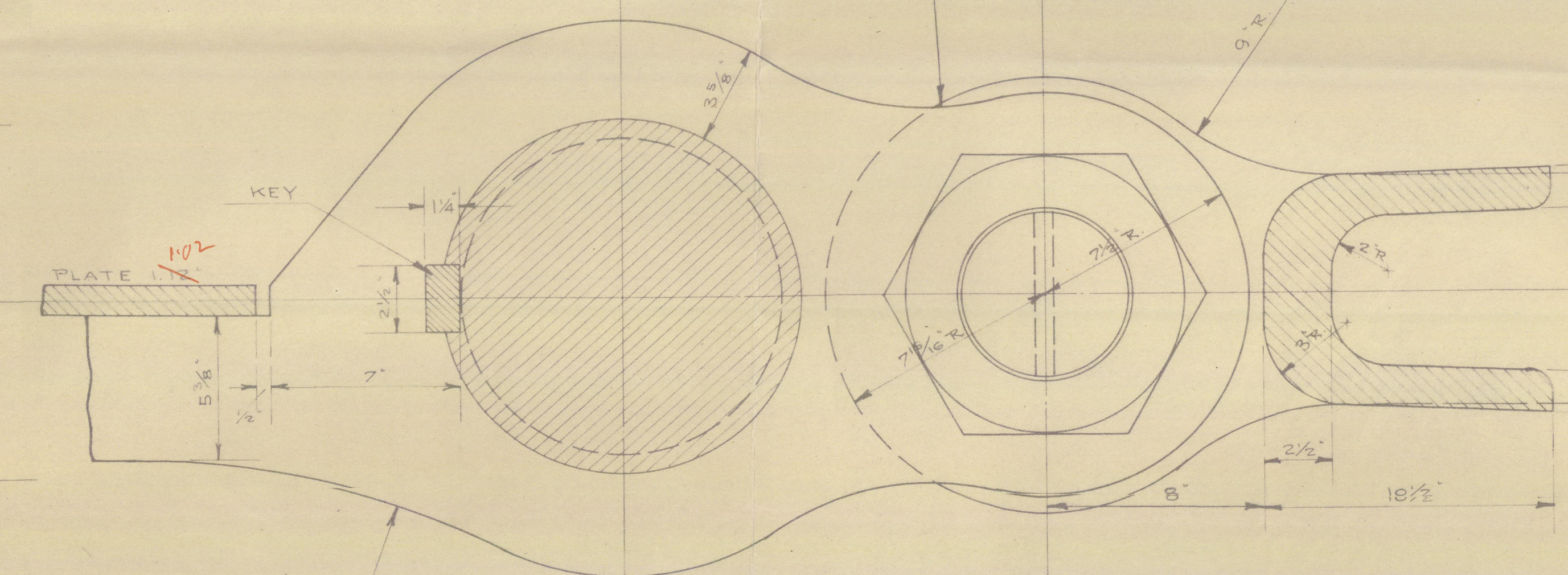
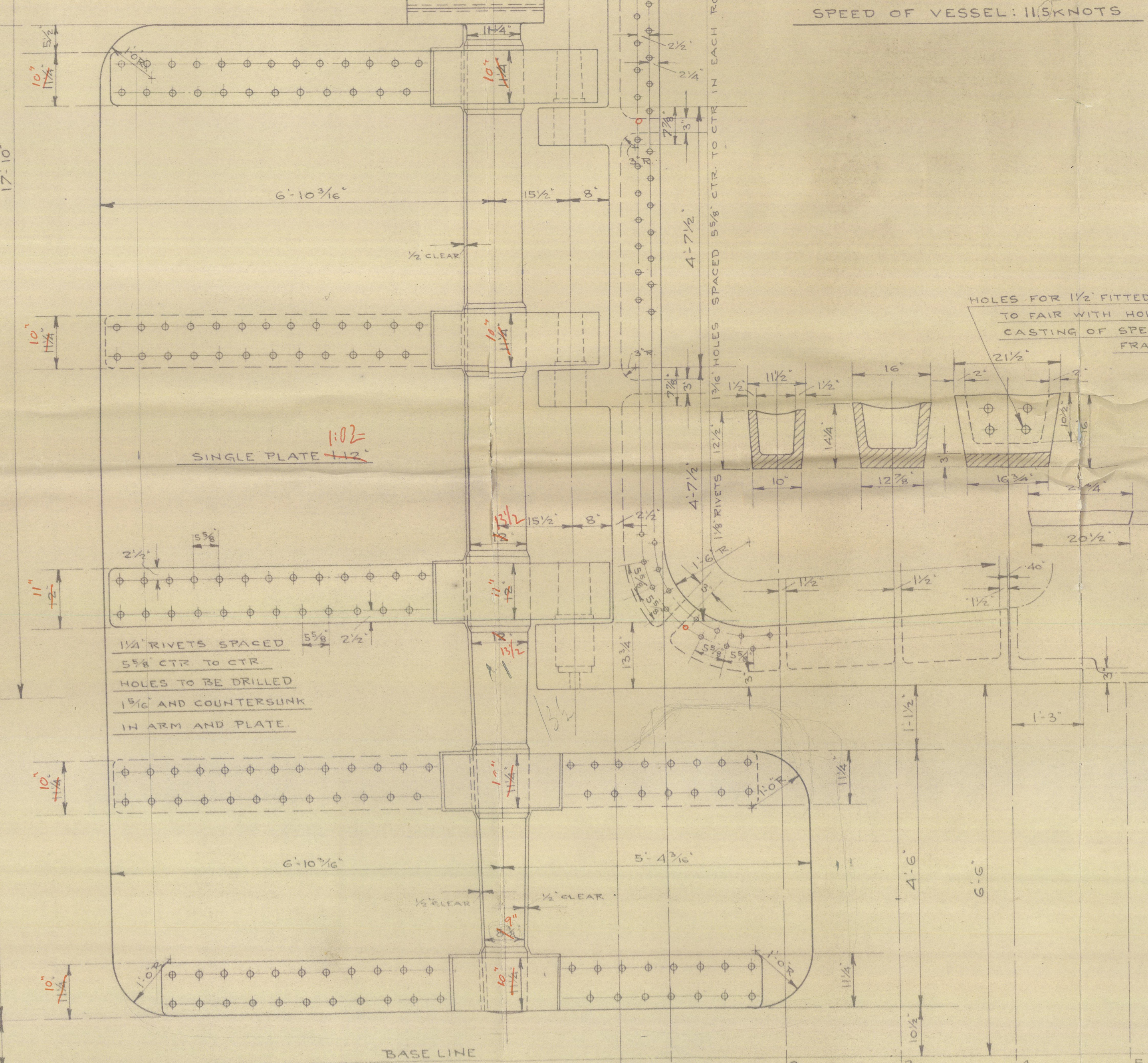
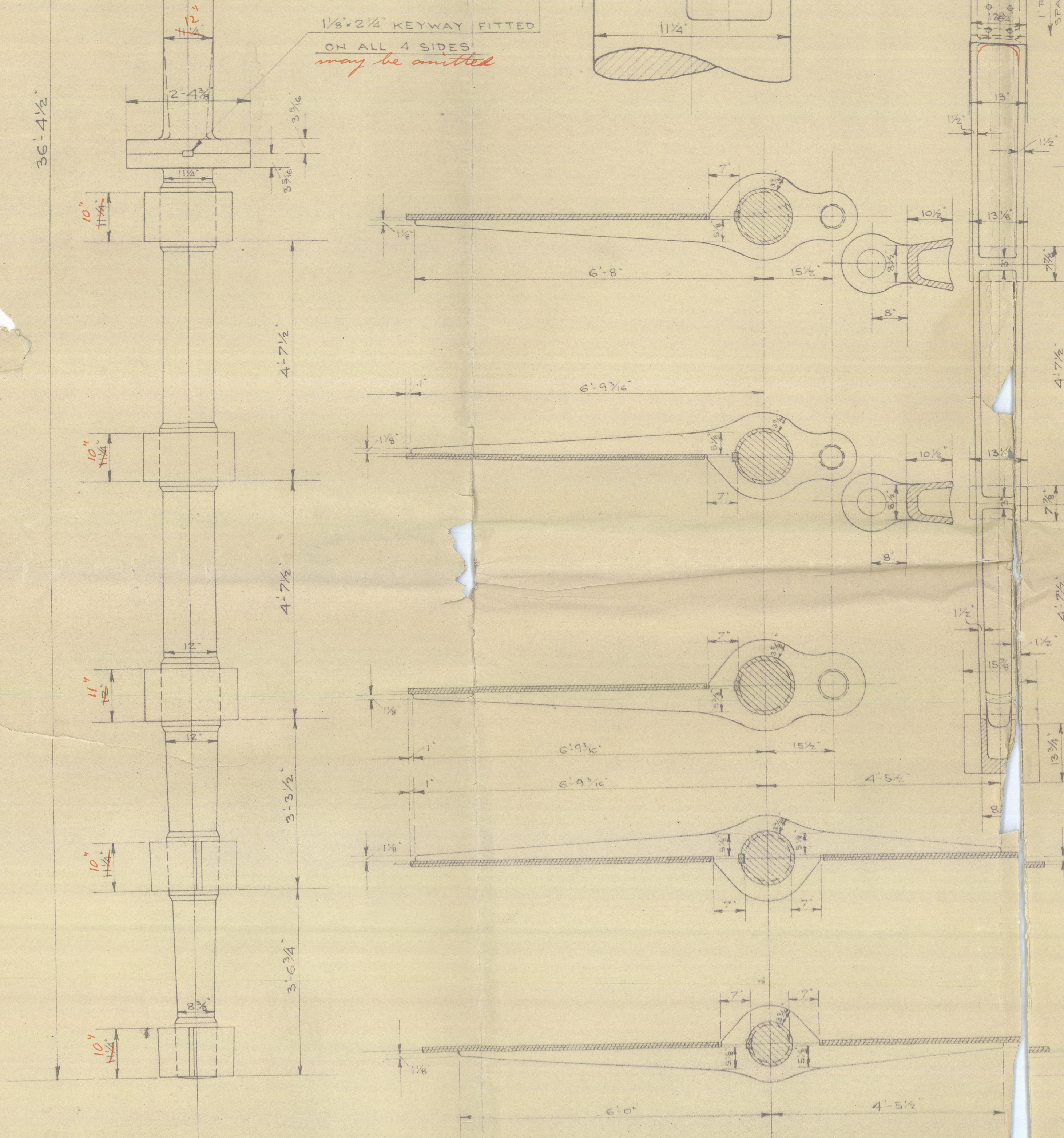
SCALE: 3/4" & 3"=1'-0"

MATERIAL.  
STERNPOST OF CAST STEEL.  
RUDDERHEAD AND MAINPIECE OF FORGED STEEL.  
RUDDERARMS OF FORGED STEEL, SHRUNK ON AND  
KEYED TO MAINPIECE.  
STEEL PINTLES WITH BRASS SLEEVE FITTED COMPLETE AS SHOWN.  
BRITISH LLOYD'S TEST  
CERTIFICATE TO BE DELIVERED.

SKETCH OF TWO UPPER GUDGEONS.  
SCALE: 3"=1'-0"



AREA OF RUDDER: 1424 SQ FEET = A  
CENTRE OF GRAVITY FROM E OF  
PINTLES: 8.74 FT = D  
A x D: 1424 x 8.74 = 5568.88  
SPEED OF VESSEL: 11.8 KNOTS



SKETCH OF LOWER GUDGEON.  
SCALE: 3"=1'-0"



No 7 Odense Staalskisverft  
No 27.

Stempost and Rudder.

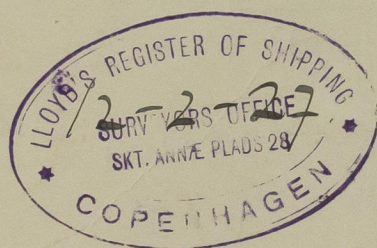
approved plan.

(See later plan of  
Rudder, 9/3-27)

M.V. "NYHOLM" .X.

CPN. 7599.

EVANGELISTRA.



002674-602681-d92



© 2020

Lloyd's Register  
Foundation