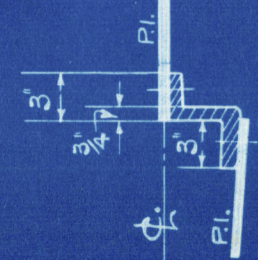
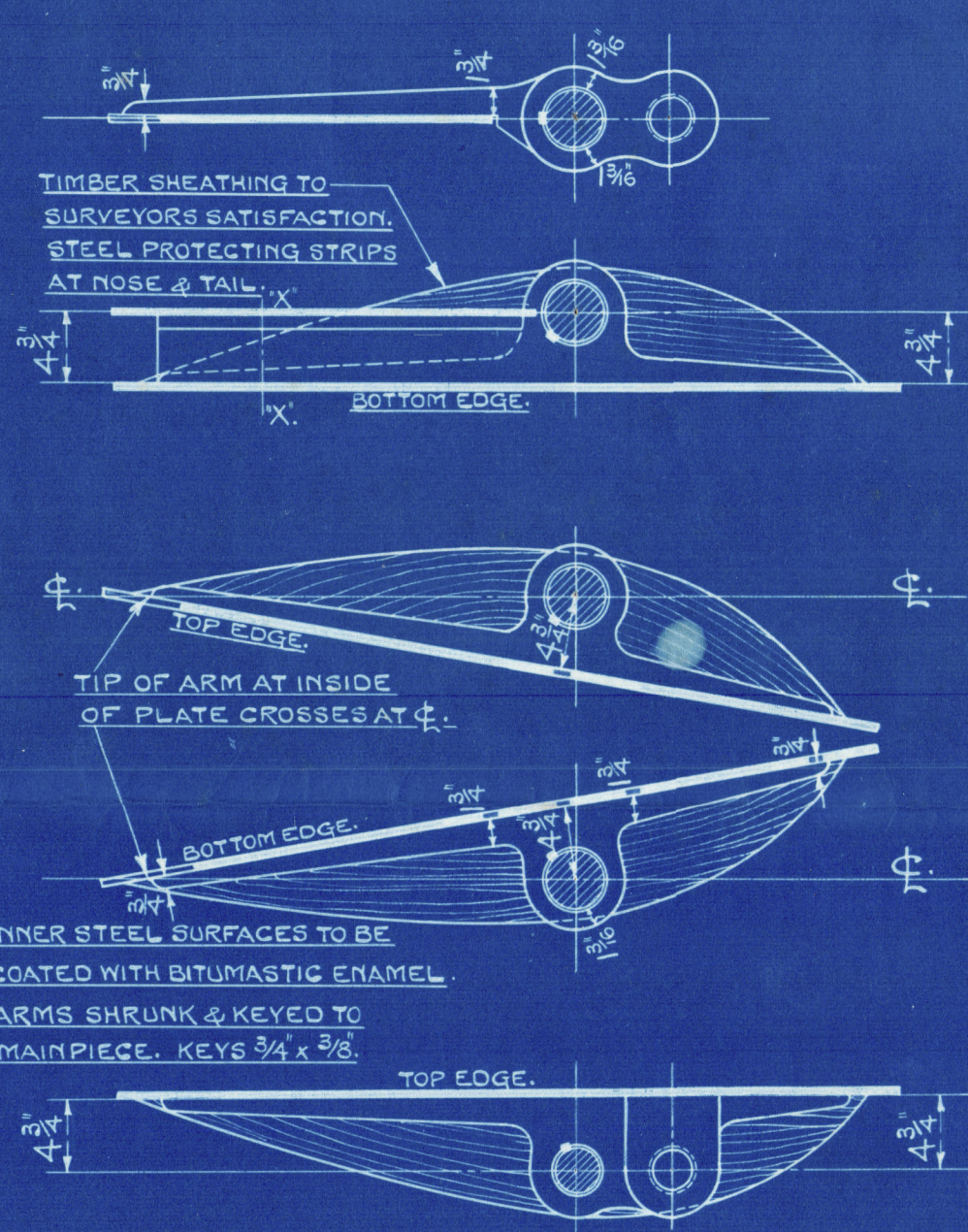


- 1/4 FULL SIZE.

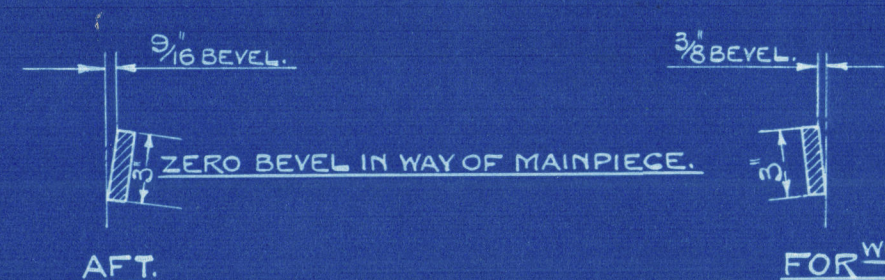


- LOOKING FORWARD

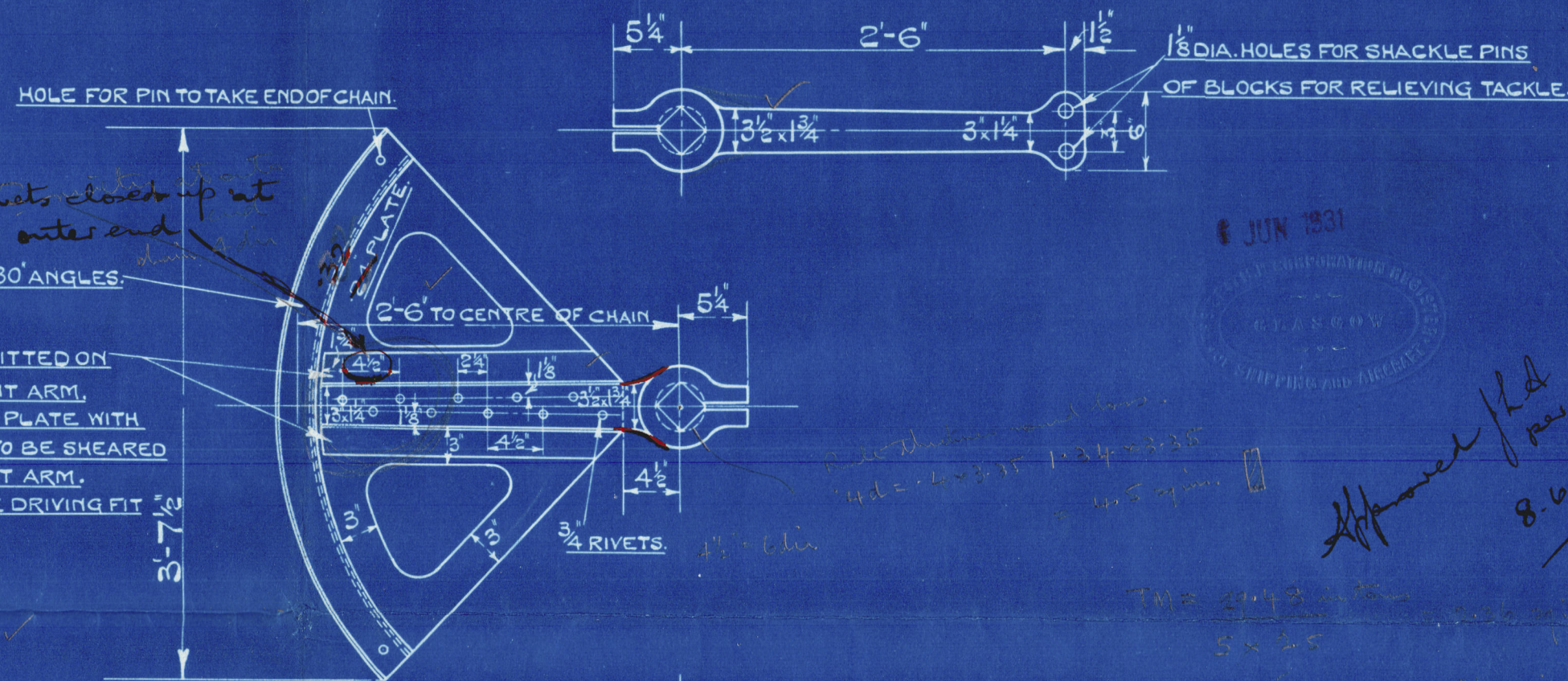


INNER STEEL SURFACES TO BE
COATED WITH BITUMASTIC ENAMEL
ARMS SHRUNK & KEYED TO
MAINPIECE. KEYS $\frac{3}{4}$ " x $\frac{3}{8}$ ".

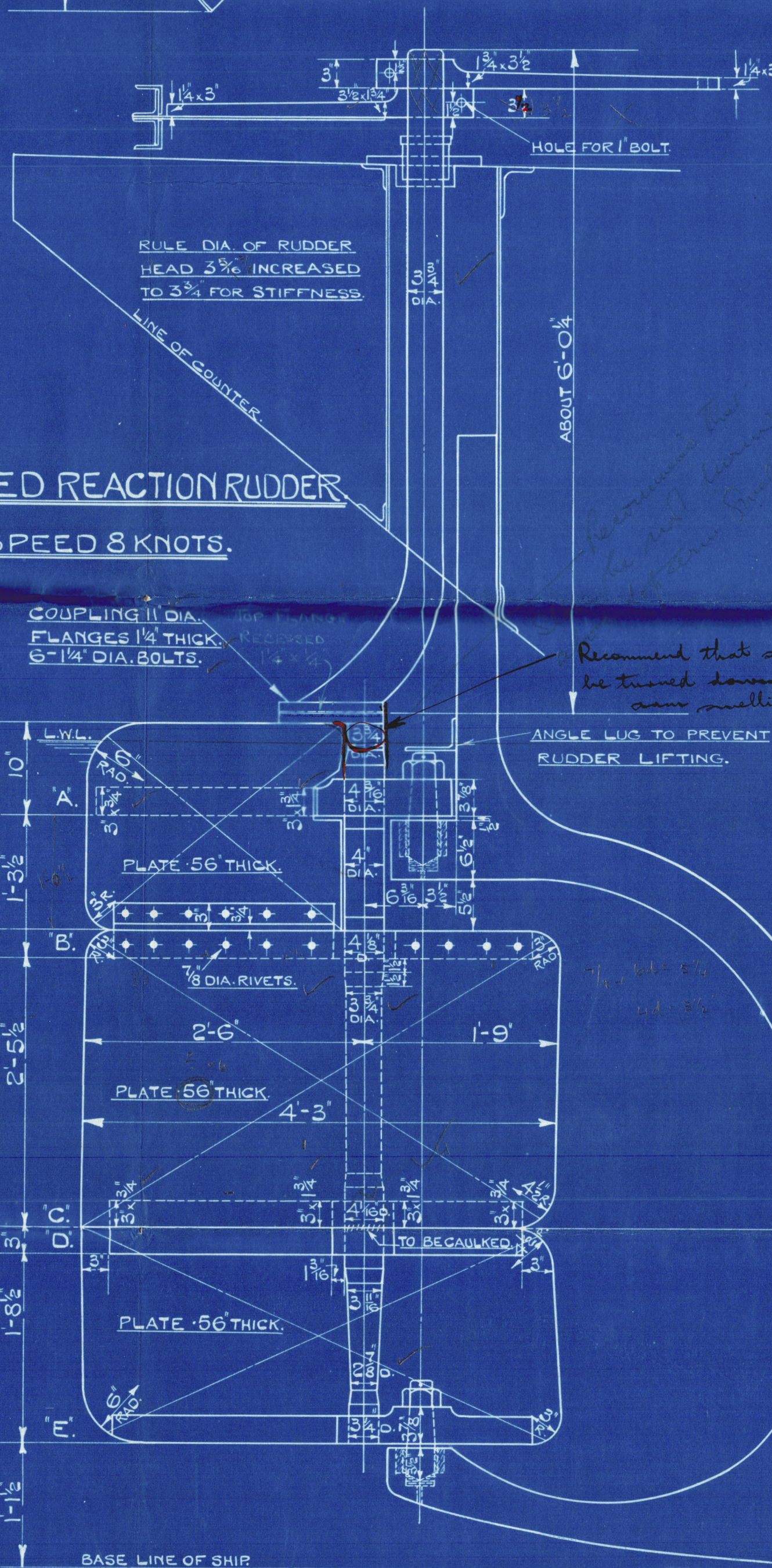
TOP EDGE

FOR WD

- LOOKING FOR ^{WD}



STEERING CHAINS $\frac{9}{16}$ " DIA.
" RODS $\frac{3}{4}$ " DIA

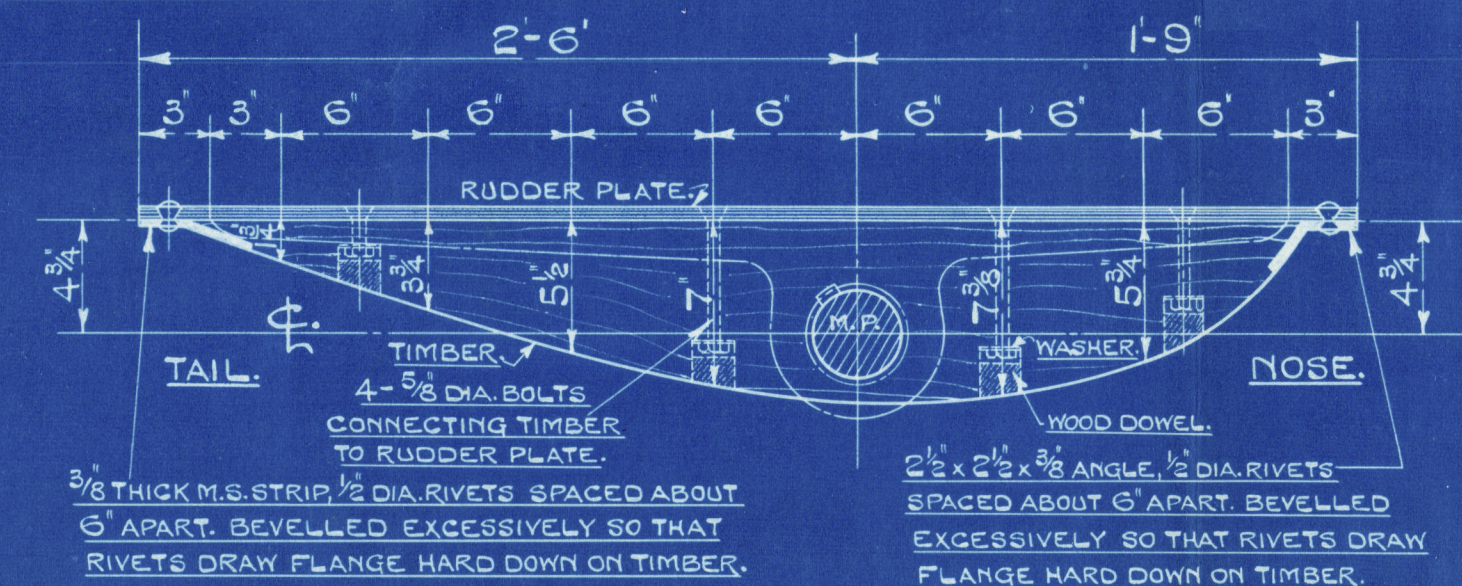


SPEED 8 KNOTS.

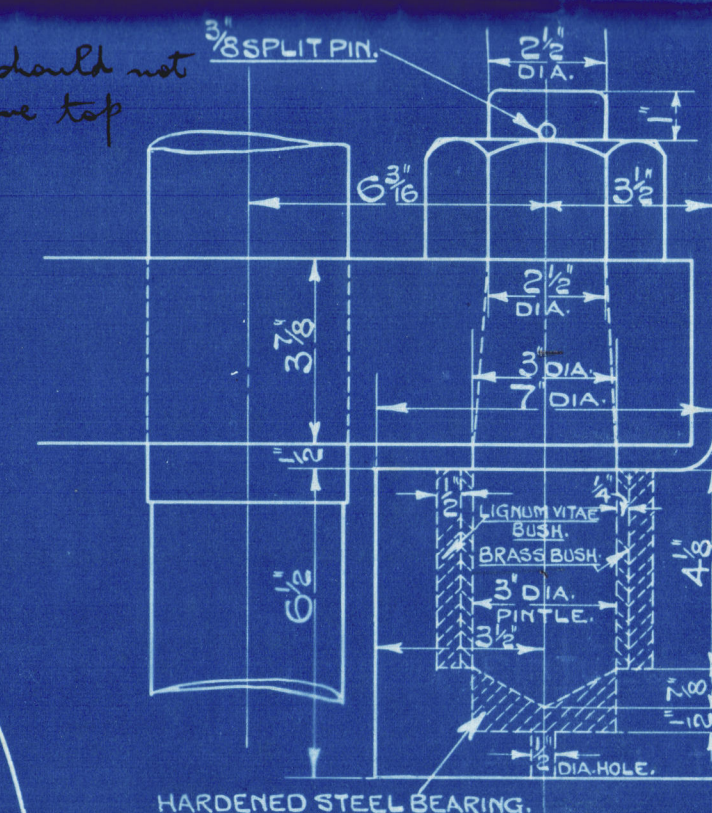
COUPLING 11" DIA.
FLANGES 1 1/4" THICK.
6-1 1/4" DIA. BOLTS.

Recommend that stock should not
be trued down above top
can mulling.

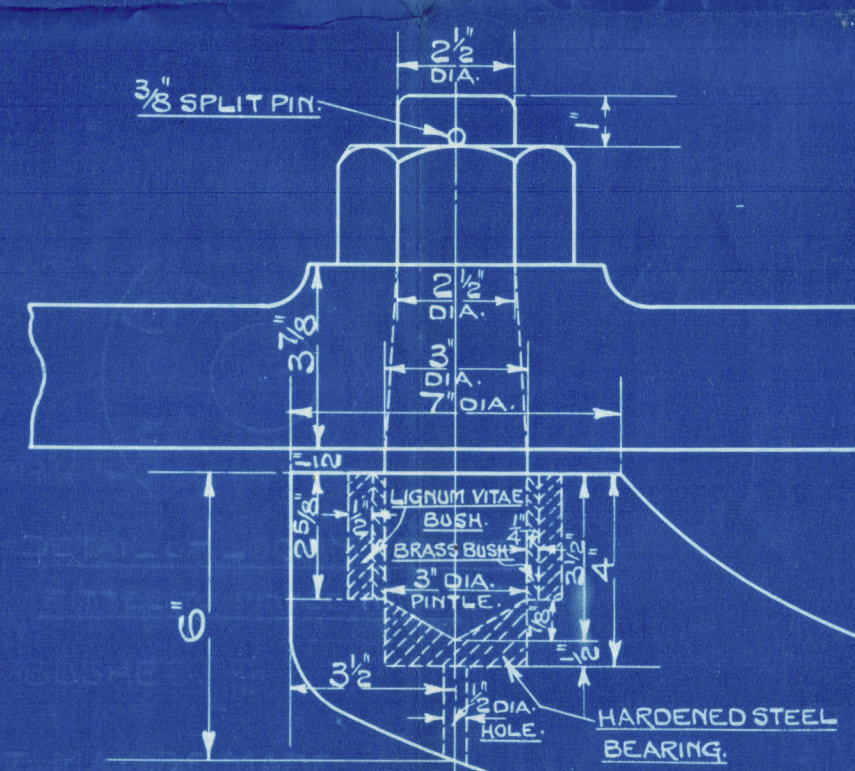
ANGLE LUG TO PREVENT
RUDDER LIFTING.



SCALE: - 1 1/2" = 1 FT.



— SCALE: - 3" = 1 FOOT.



— SCALE: — 3" = 1 FOOT.

S. 470.

RUDDER & QUADRANT.

— SCALE: - 1" = 1 FOOT.

TRACING N° 5946.

DRAWER N° 9.

12



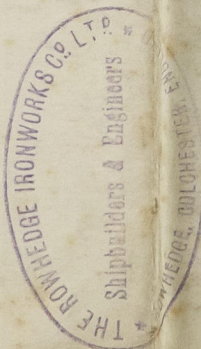
Rudder & Quadrant.

Howedge Ironworks Co.

N^o 470.

8-6-31.

M^{rs} BEN SADLER



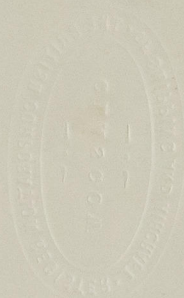
© 2020

Lloyd's Register
Foundation

¹²
Rudder & Quadrant

Bowhedge H70.

Boag.



002667-002673-0230



© 2020

Lloyd's Register
Foundation