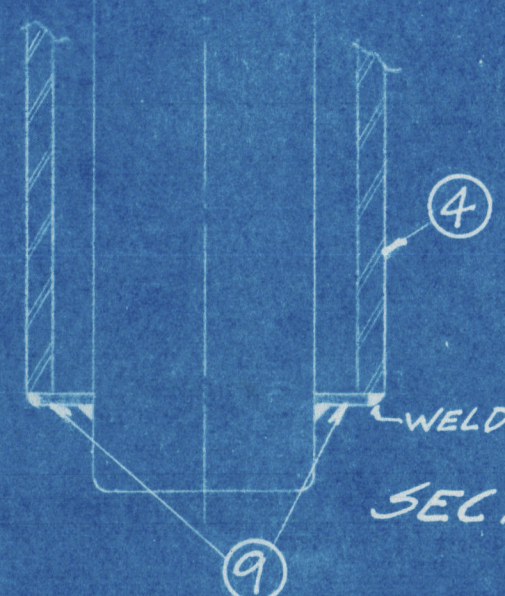


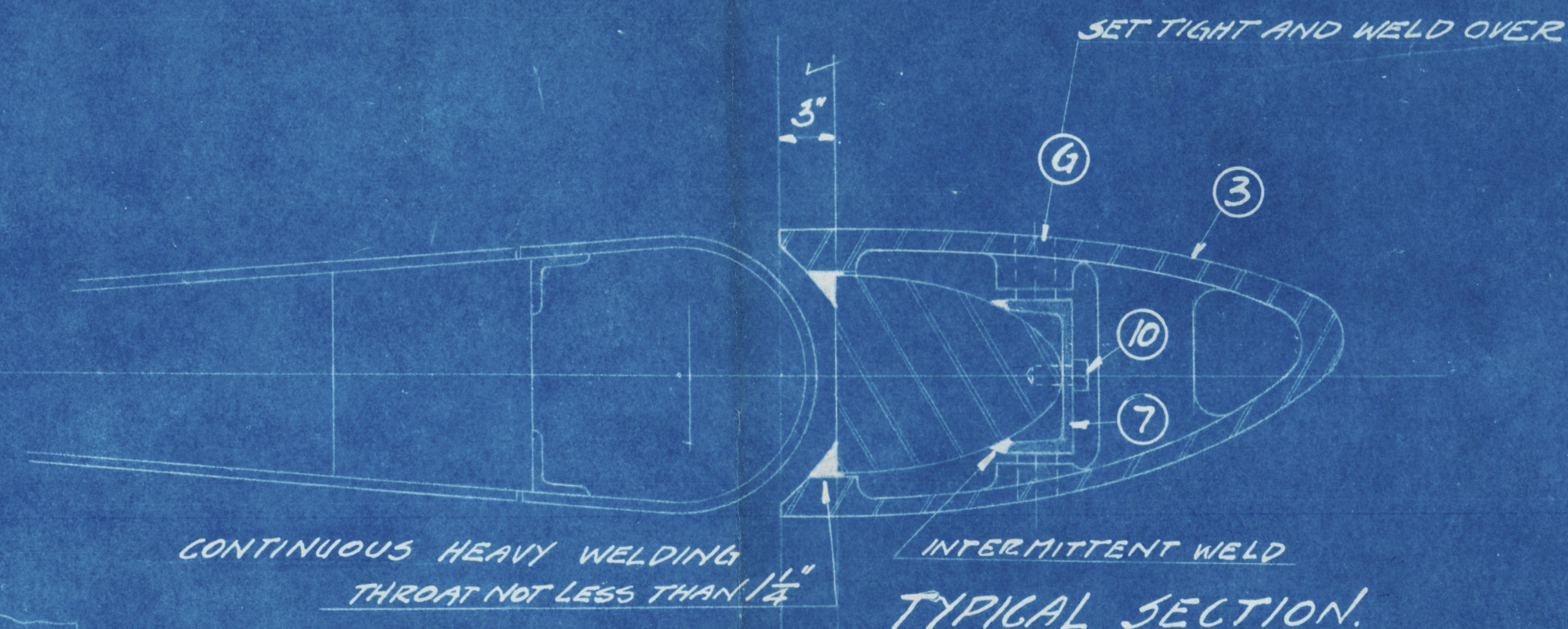
SECTION: B-B.



SECTION: A-A.



DETAIL AND LOCATION OF CHANNELS



WELDING IN WAY OF GUDGEONS.

NOTE: ALL WORK AND MATERIAL SUBJECT TO CLASSIFICATION SOCIETY'S RULES AND INSPECTION.
HOLES MAY BE DRILLED IN CASTINGS TO FACILITATE ERECTION. PLUG HOLES AFTER USE.
LIFT TEMPLATES OF STERN FRAME IN WAY OF CONTRAPROP. WORKING FROM $\frac{1}{2}$ OF SHAFT, CHECK CONTRAPROP. WITH TEMPLATES AND CHIP OFF TO FIT.
PAINT ALL BOLTS WITH WHITE LEAD AND TALLOW BEFORE INSERTING THEM.
FILL ALL COUNTERSUNK HOLES WITH CEMENT.
FILL CONTRAPROP. WITH HYDROLENE OR AN EQUIVALENT APPROVED BY OWNERS.
TURN RUDDER FROM HARD OVER TO HARD OVER TO TEST CLEARANCES.

FOR DETAILS SEE DWG:
CR-0183-538 - BLADES
" - 539 - CENTER PIECE.
HUB CAP.
" - 540 - BOLTS.

11	12	SCREW BOLT	1" DIA. x 2 1/2" L.
10	21	SCREW BOLT	1" DIA. x 2" L.
9	4	CLOSING R.	1/2" R.
8	4	LINER	TO SUIT
7	2	CHANNEL	8" x 3 1/2" x 22.8"
6	6	BOLT	1" DIA.
5	1	HUB CAP - IN HALVES	SEMI-STEEL
4	16	SET SCREWS	STEEL
E	2	BOLT	STEEL BOLTS,
D	2	BOLT	BRONZE NUTS,
C	2	BOLT	COPPER
B	2	BOLT	WASHERS
A	1	BOLT	
4	1	LOWER BLADE	CAST STEEL
3	1	UPPER BLADE	CAST
2	1	STD HALF CENTER PIECE	CAST
1	1	PORT HALF CENTER PIECE	SEMI-STEEL

TH. GOLDSCHMIDT CORPORATION
NEW YORK
PATENTEE - STAR CONTRAPROPELLER LTD. - OSLO NORWAY
GENERAL ARRGT CONTRAPROPELLER
S.S. PAN BOLIVAR
PAN AMERICAN PETROLEUM & TRANSP. CO.
SCALE: 3/4" = 12" APPROVED:
DRAWN: M. G.
CHECKED: J. G.
DATE: JUNE 5-1931

APPROVED
JUL 24 1931
LLOYD'S REGISTER OF SHIPPING
NEW YORK

CR-0183-541