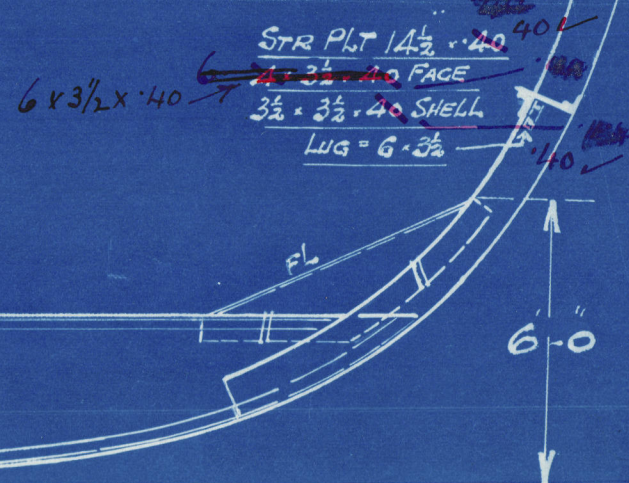
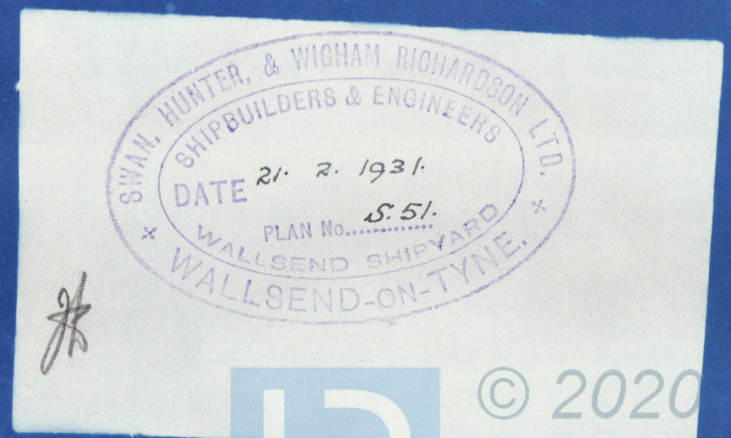
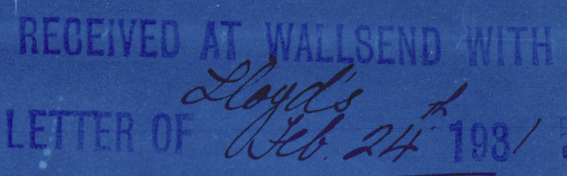
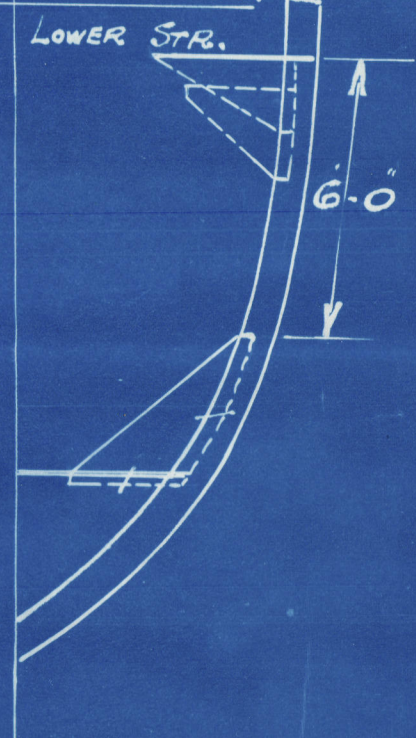
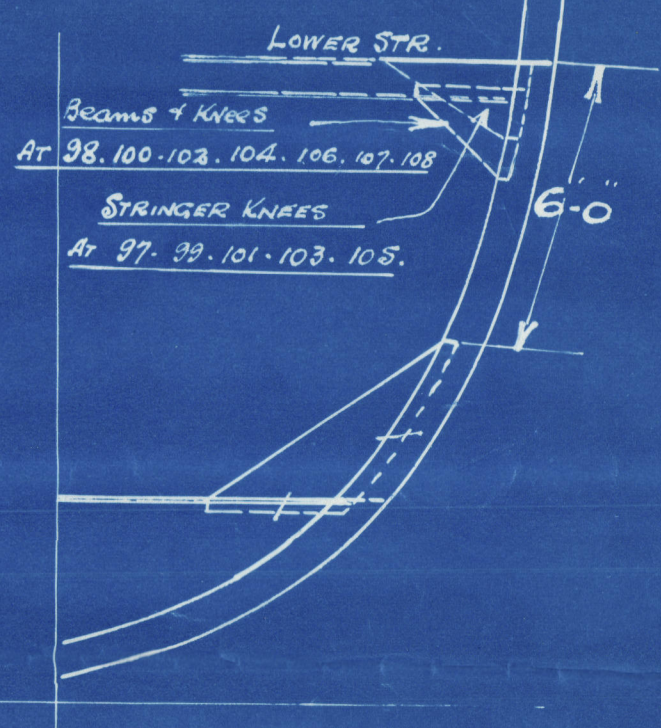
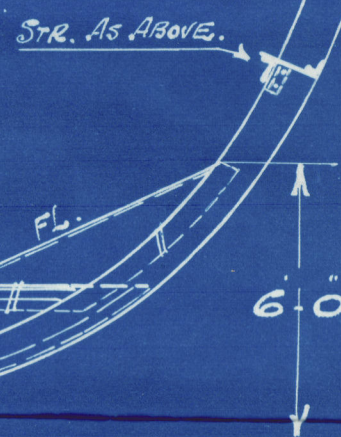


FORE END FRAMING.

Note:- all B. angles are New British Standard.



Midship Thickness of 3. Strakes of Bottom Shell to be maintained forward to Rule position of Coll'n Bx Head.



(17)

Swan. Hunter.

No. 1465.

Fore End. Framing. (b)

M.V. "PAN BOLIVAR

NEWCASTLE ON TYNE.

Report No. 87354



© 2020

Lloyd's Register
Foundation

002667-002673-0149