

30.4.37
15.12.37 - 10617
2.11.38 - 10622

W. 64-6
Gm 1037
10/14

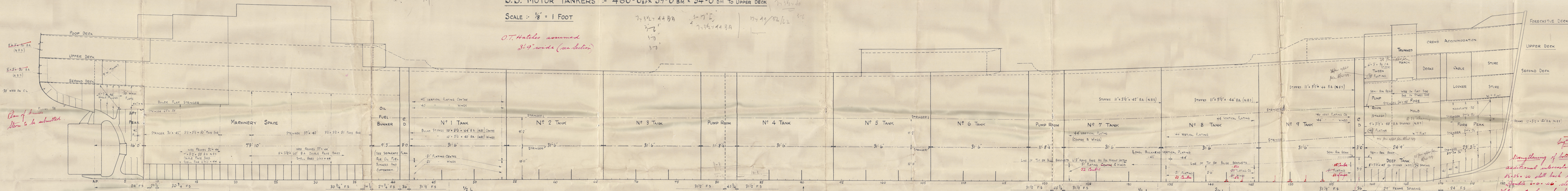
SHIP NOS 611 & 612 PROFILE & DECK PLANS

S.S. MOTOR TANKERS - 460'-0" x 59'-0" BM x 34'-0" DM TO UPPER DECK

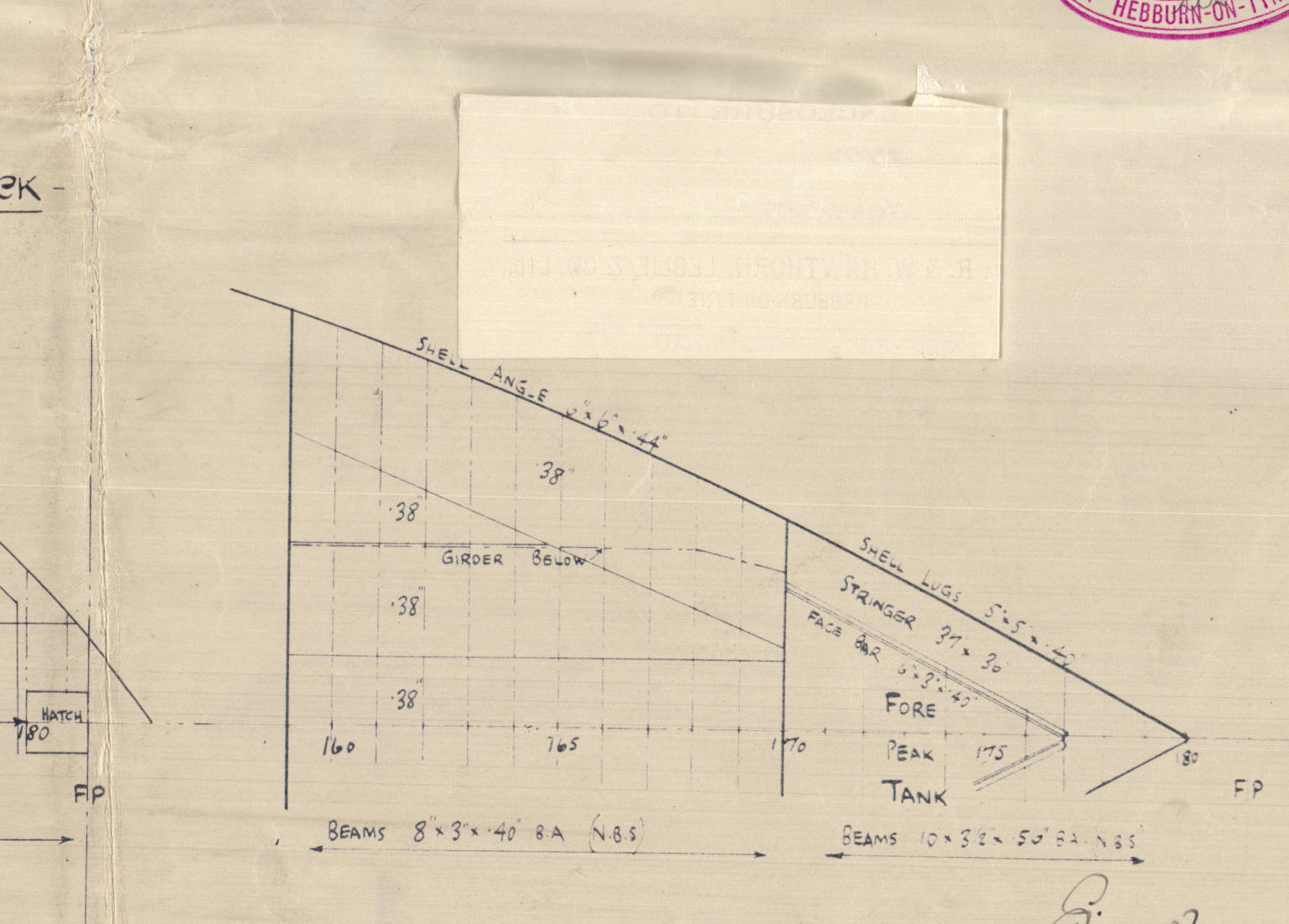
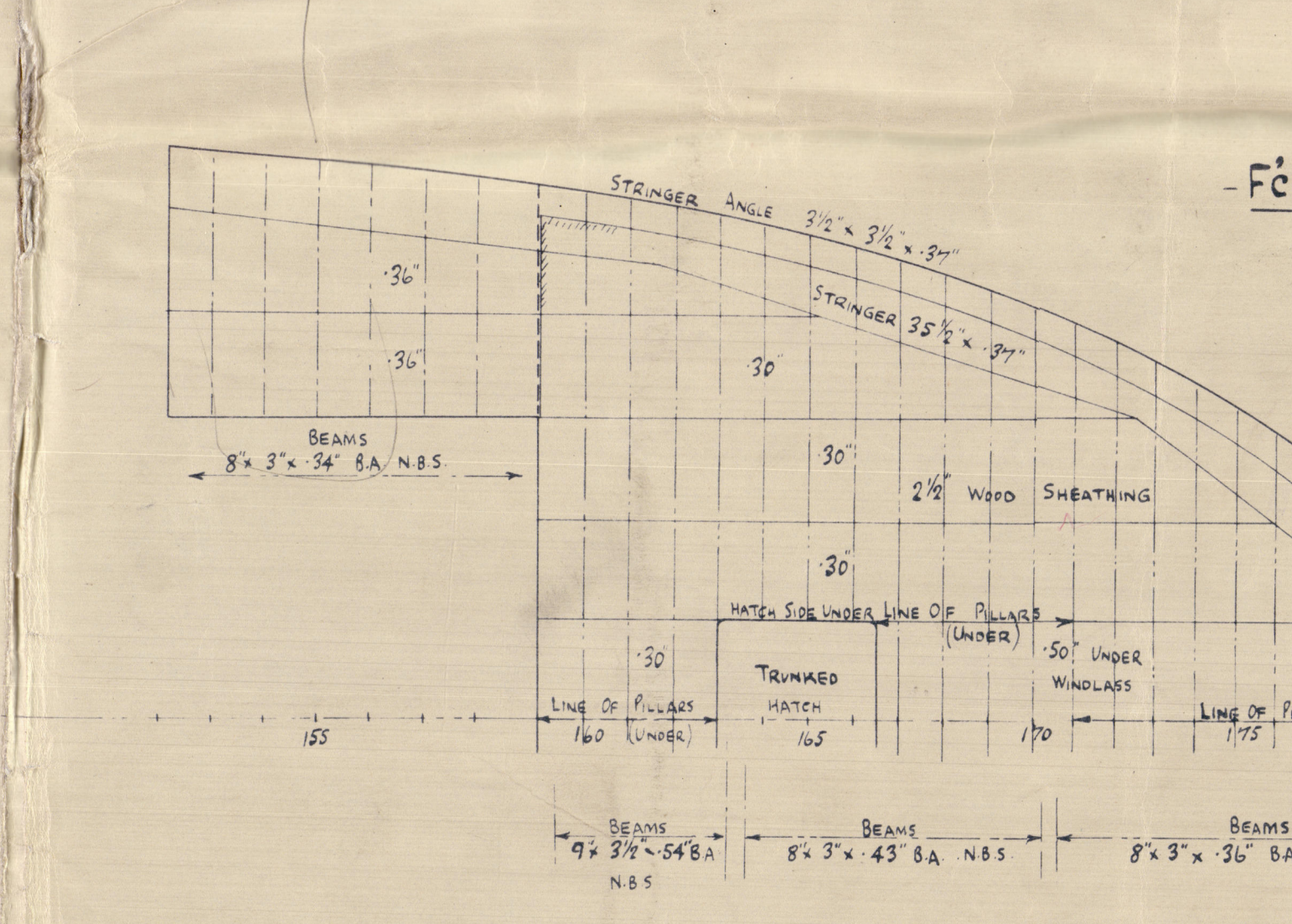
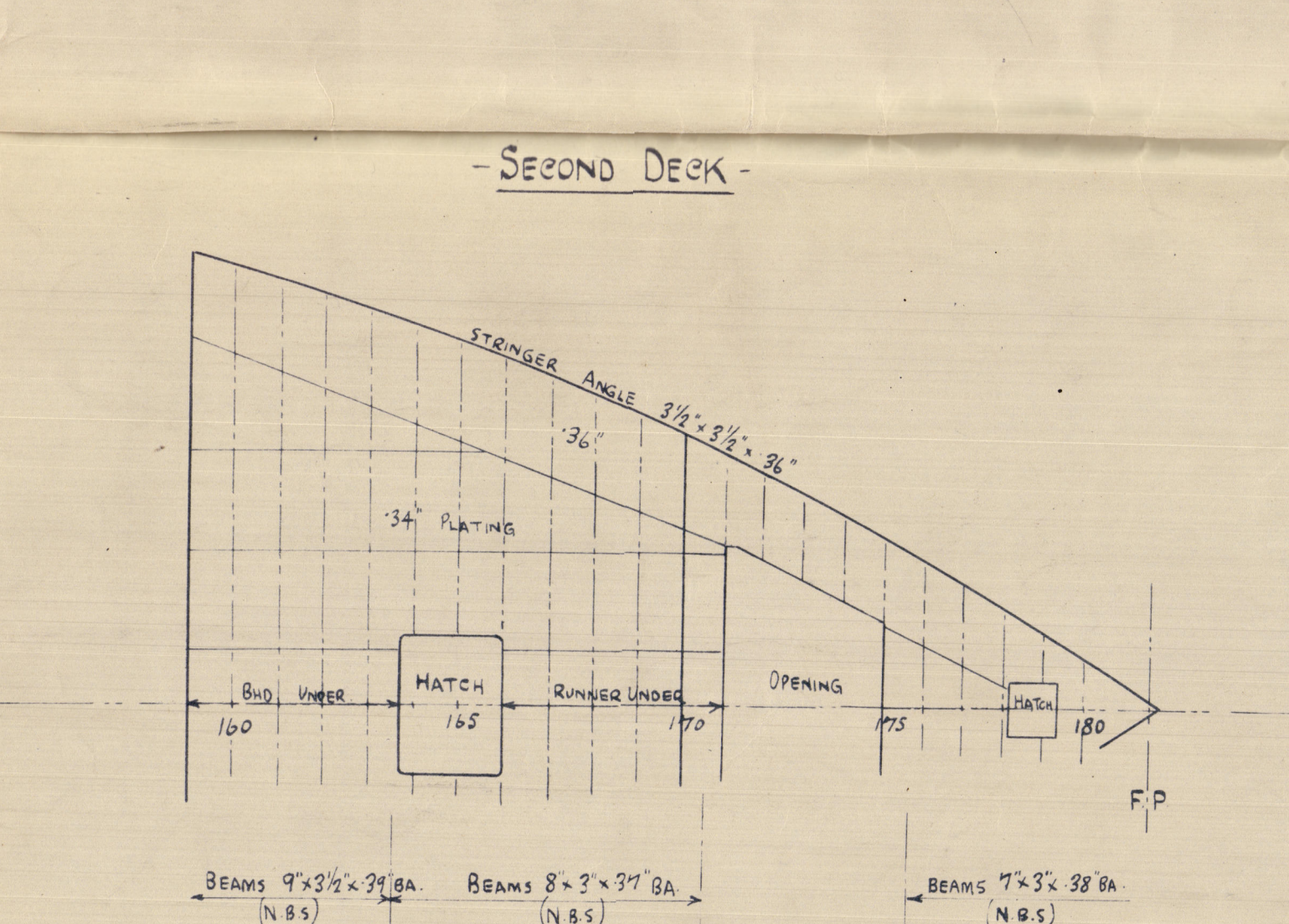
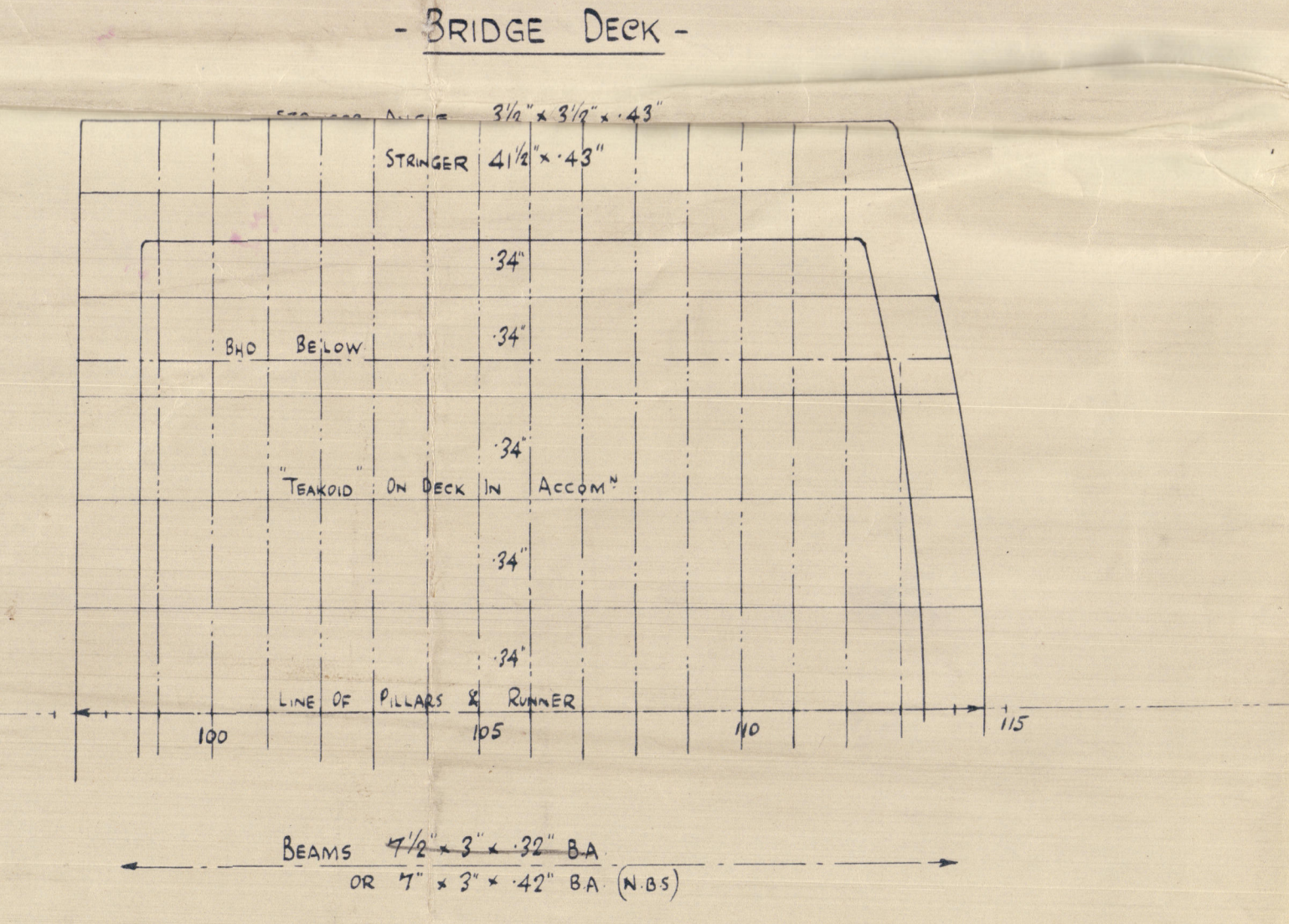
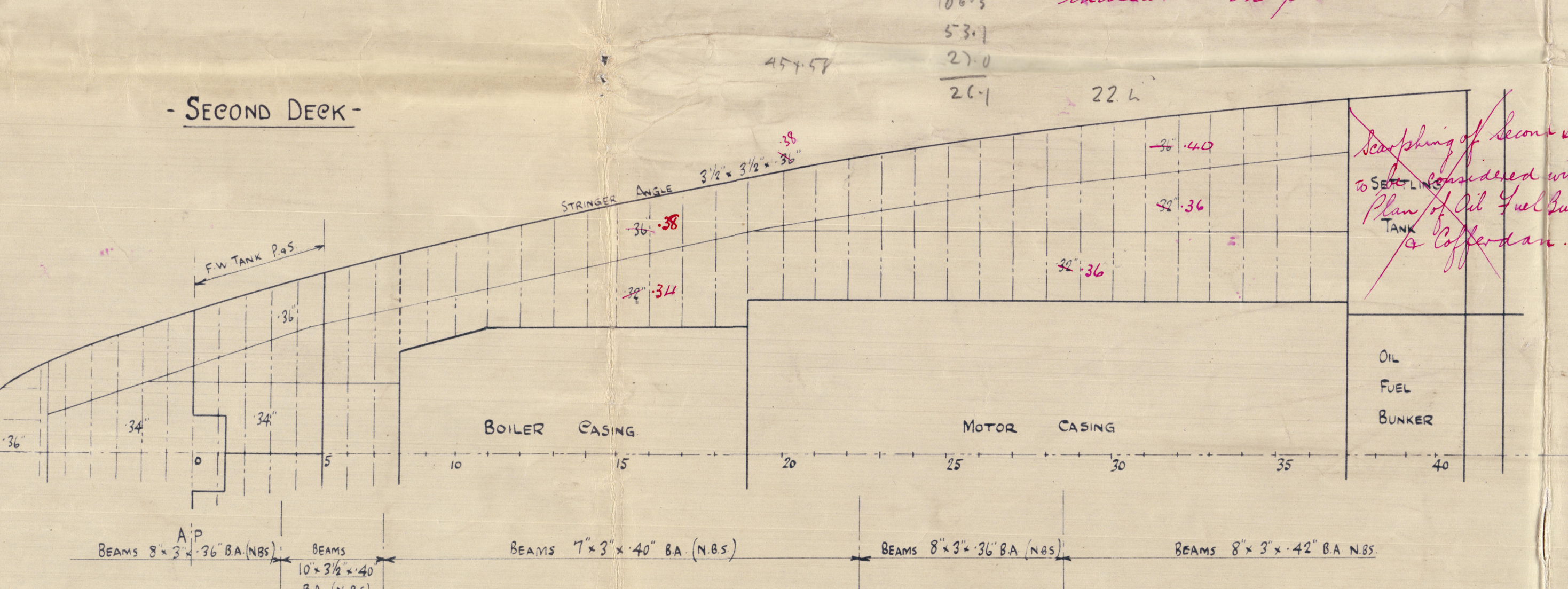
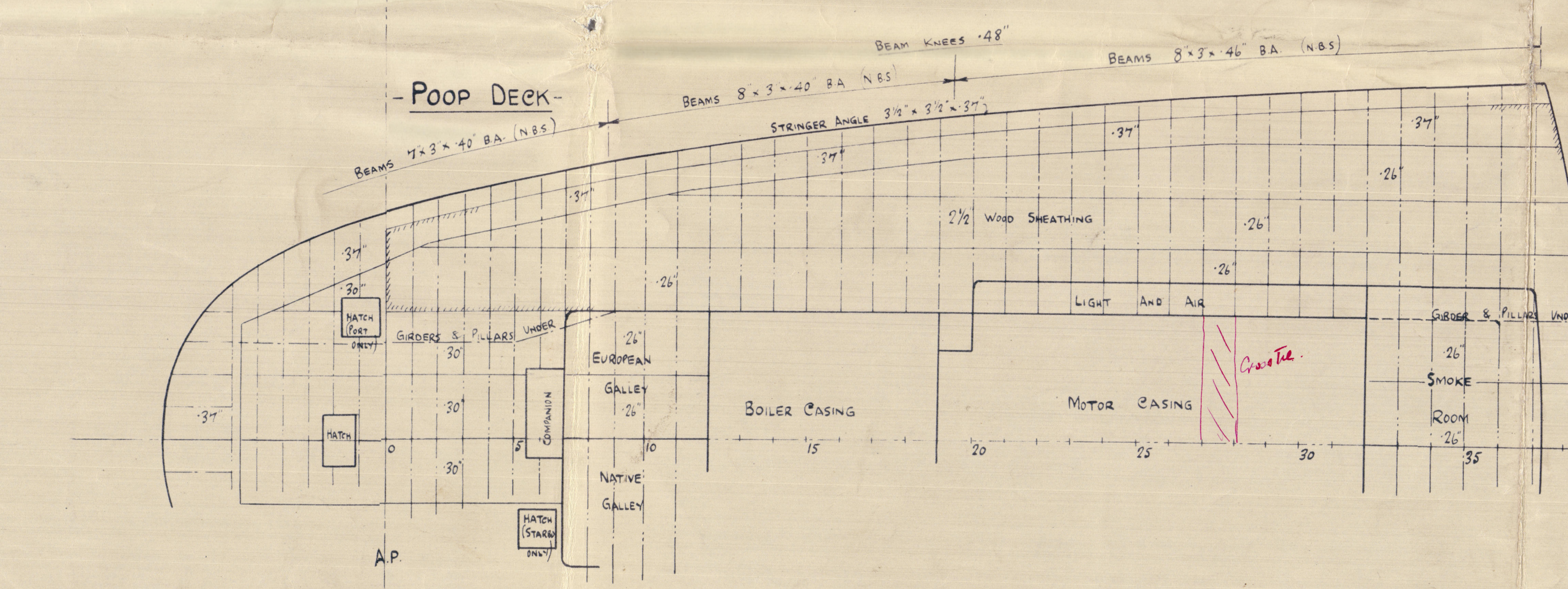
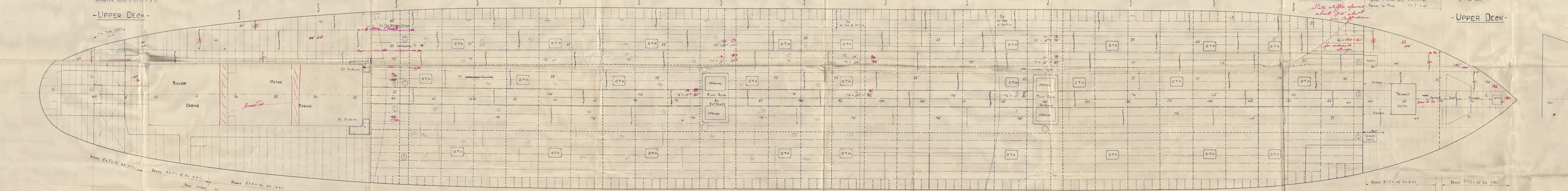
SCALE: 1/8" = 1 FOOT

O.T. Hatches assumed
3'9" wide (see section)

7-3/4" x 44 BA
3-7" L
7-3/4" x 44 BA
17-44/82/62



Strengthening of bottom forward
additional structural members to be fitted in boiler tank on 100, 102, 104, 106, 108, 110, 112, 114, 116, 118, 120, 122, 124, 126, 128, 130, 132, 134, 136, 138, 140, 142, 144, 146, 148, 150, 152, 154, 156, 158, 160, 162, 164, 166, 168, 170, 172, 174, 176, 178, 180, 182, 184, 186, 188, 190, 192, 194, 196, 198, 200, 202, 204, 206, 208, 210, 212, 214, 216, 218, 220, 222, 224, 226, 228, 230, 232, 234, 236, 238, 240, 242, 244, 246, 248, 250, 252, 254, 256, 258, 260, 262, 264, 266, 268, 270, 272, 274, 276, 278, 280, 282, 284, 286, 288, 290, 292, 294, 296, 298, 300, 302, 304, 306, 308, 310, 312, 314, 316, 318, 320, 322, 324, 326, 328, 330, 332, 334, 336, 338, 340, 342, 344, 346, 348, 350, 352, 354, 356, 358, 360, 362, 364, 366, 368, 370, 372, 374, 376, 378, 380, 382, 384, 386, 388, 390, 392, 394, 396, 398, 400, 402, 404, 406, 408, 410, 412, 414, 416, 418, 420, 422, 424, 426, 428, 430, 432, 434, 436, 438, 440, 442, 444, 446, 448, 450, 452, 454, 456, 458, 460, 462, 464, 466, 468, 470, 472, 474, 476, 478, 480, 482, 484, 486, 488, 490, 492, 494, 496, 498, 500, 502, 504, 506, 508, 510, 512, 514, 516, 518, 520, 522, 524, 526, 528, 530, 532, 534, 536, 538, 540, 542, 544, 546, 548, 550, 552, 554, 556, 558, 560, 562, 564, 566, 568, 570, 572, 574, 576, 578, 580, 582, 584, 586, 588, 590, 592, 594, 596, 598, 600, 602, 604, 606, 608, 610, 612, 614, 616, 618, 620, 622, 624, 626, 628, 630, 632, 634, 636, 638, 640, 642, 644, 646, 648, 650, 652, 654, 656, 658, 660, 662, 664, 666, 668, 670, 672, 674, 676, 678, 680, 682, 684, 686, 688, 690, 692, 694, 696, 698, 700, 702, 704, 706, 708, 710, 712, 714, 716, 718, 720, 722, 724, 726, 728, 730, 732, 734, 736, 738, 740, 742, 744, 746, 748, 750, 752, 754, 756, 758, 760, 762, 764, 766, 768, 770, 772, 774, 776, 778, 780, 782, 784, 786, 788, 790, 792, 794, 796, 798, 800, 802, 804, 806, 808, 810, 812, 814, 816, 818, 820, 822, 824, 826, 828, 830, 832, 834, 836, 838, 840, 842, 844, 846, 848, 850, 852, 854, 856, 858, 860, 862, 864, 866, 868, 870, 872, 874, 876, 878, 880, 882, 884, 886, 888, 890, 892, 894, 896, 898, 900, 902, 904, 906, 908, 910, 912, 914, 916, 918, 920, 922, 924, 926, 928, 930, 932, 934, 936, 938, 940, 942, 944, 946, 948, 950, 952, 954, 956, 958, 960, 962, 964, 966, 968, 970, 972, 974, 976, 978, 980, 982, 984, 986, 988, 990, 992, 994, 996, 998, 1000



6100
1 MAY 1937
REVISION 1

© 2020
Lloyd's Register
Foundation

R. & W. HAWTHORN, LESLIE
& CO. LTD.
(11)

SHIP NO. ^{DAPHNELLA} ^{DORYSSA} ^{DARONIA} ^{DOLABEL} 611-612-617-622

W.S. 683

PROFILE AND DECK PLAN.

M.V. "Daphnella" *
NEWCASTLE ON TYNE.
Report No. 96396

M.V. "Doryssa"
NEWCASTLE ON TYNE.
Report No. 96601

M.V. Daronia
NEWCASTLE ON TYNE.
Report No. 97224.

002659-00-2666-0117 2 1/2



© 2020

Lloyd's Register
Foundation

HEBBURN-ON-TYNE
ENCLOSURE TO

LLOYDS

NEWCASTLE

42/02550

FROM R. & W. HAWTHORN, LESLIE & CO. LTD.,
HEBBURN-ON-TYNE.

002659-002666-0117 1/2