

No. 2658

THE BRITISH CORPORATION REGISTER  
OF SHIPPING AND AIRCRAFT

2959  
Report No. 1022 No. in Register Book 2591

Ship M.V. ERNA

Builder ZAAANLANDSCHE SCHEEPSB. M.S.

Yard No. 423

HULL AND EQUIPMENT



© 2020

Lloyd's Register  
Foundation

002659-002666-0104

134' 6"  
11' 6" x 6' 6" x 6' 6"  
7 1/2 knots.  
27/15



THE BRITISH CORPORATION REGISTER  
OF SHIPPING AND AIRCRAFT

Report No. .... 1022 No. in Register Book.....

Received at Head Office..... 12/4/40

Surveyor's Report on the Construction of the

Single  Screw M.V. „ERNA“

Surveyor's District *Rotterdam.*  
Builders *Haarlandsche Scheepb. Mij.*  
Yard No. *423.* Where Built *Haarlem.*  
Owners *J. J. Janssen and L. J. Hendriks.*  
Port of Registry *Haarlem* Flag *Dutch.*  
Managers *—*  
Manager's Address *—*  
Official No. *—*  
Rig *One mast* Code Letters *P.D. Y. Q.*  
Scantling Sections approved by Committee *8th May 1939.*  
To be classed *B. S. \* Unrestricted Service.*  
With a Freeboard of *1.05 M.*  
Date of First Visit *22-6-'39*  
Date of Last Visit *29-3-'40*  
Total number of Visits *24*  
Keel Laid *7-7-'39*  
Date of Build *1940*  
Launched *7-3-'40*  
Date of this Report *2-7-'40*

© 2020

Lloyd's Register  
Foundation



## PARTICULARS.

## Registered Dimensions

41.49 x 7.33 x 2.52 M.

## Tonnages—

Tons.

## Under Tonnage Deck

In ..... 'Tween Decks

In ..... 'Tween Decks

In ..... 'Tween Decks

In Turret

## Suez Canal Tonnage—

## Under Deck Tonnage

206.00.

## Tonnage in Poop

" R.Q.D.

" Bridge

" Forecastle

" Hatchways

" Deck Houses

" Chart Houses

" Light and Air Spaces

## Gross Tonnage

361.18

## Deductions—

Crew Space

Engine Room %

Light and Air

Navigation Spaces and Stores

Peak Tanks

Deep Tanks

## Net Registered Tonnage

167.01

Date of Expiry of Vessel's B.O.T. Passenger Certificate

134'-6"

## PARTICULARS—Continued.

## Moulded Dimensions

41.00 x 7.30 x 2.97 M.

## Height of Superstructure

1.00 M.

$$\text{Proportions } \frac{L}{B} = 5.62$$

$$\frac{L}{D} = 13.8$$

$$\frac{D}{B} = 0.407$$

$$\frac{L}{D \text{ (to top of Superstructure)}} = 10.32$$

Camber 200 m.m.

Rise of Floor 50 m.m.

Number and Description of Decks for Register Book

Forecastle deck, Main deck  
Raised R. Deck, Poop deck.

Number of Decks under Freeboard Deck

" " above " "

Heights of 'Tween Decks

Particulars of Superstructures

See LL 4% form.

Distance between Bulkheads of Superstructures

Freeboard Ratios of Superstructures

Watertight Bulkheads.—State Number of Frame and Deck to which each Bulkhead extends—See page 5.

Bulkhead, Frame No.	extends to	Deck.	Bulkhead, Frame No.	extends to	Deck.
Fore Peak	" 65/68 "	Forecastle	No. 8	" "	" "
No. 1	" 19 "	Poop	" 9 "	" "	" "
" 2	" "	" "	" 10 "	" "	" "
" 3	" "	" "	" 11 "	" "	" "
" 4	" "	" "	" 12 "	" "	" "
" 5	" "	" "	" 13 "	" "	" "
" 6	" "	" "	" 14 "	" "	" "
" 7	" "	" "	After Peak	" 5 "	After Peak

© 2020  
Lloyd's Register  
Foundation



## PARTICULARS—Continued.

State which Bulkheads enclose Machinery Space

Frame 5 - frame 19.

State Number of Bulkheads to be recorded as effective

2

Number and Length of effective Watertight Compartments beginning Forward

Forepeak = 5.00 M  
 Hold 25.30 M  
 Eng. Room 7.70 M  
 Afterpeak + Fresh W.T. 3.00 M.

Number of Non-Watertight Bulkheads

Double Bottom

Extends from Frame

19

to Frame

56.

Length and Capacity of Tanks

No. 1	7.70' <sup>M</sup> 2 x 12.25 Tons.	Fore Peak	5 <sup>M</sup> 29 Tons.
" 2	4.40 " 2 x 7.375 "	Aft Peak	2.20 " 9 "
" 3	8.25 " 2 x 12.25 "	Deep Tanks	" "
" 4	" "		
" 5	" "		
" 6	" "	Oil Bunkers	" "
" 7	" "		
" 8	" "		
" 9	" "		
" 10	" "		

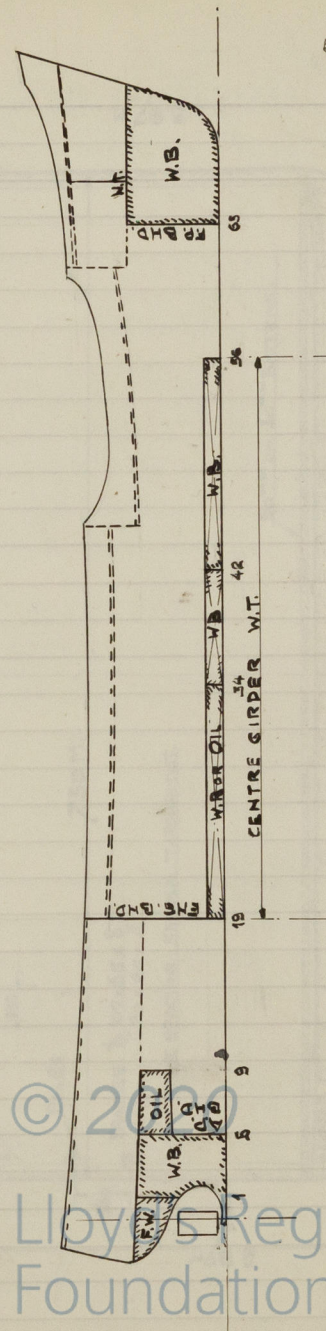
Particulars of Oil Fuel Tanks in Double Bottom.

State where Centre Girder Watertight

Frame 19 to 56.

Tank No 3 SB and PS  
 can be used as oil  
 tank.

Sketch showing Arrangement of Bulkheads, Tanks, &amp;c.

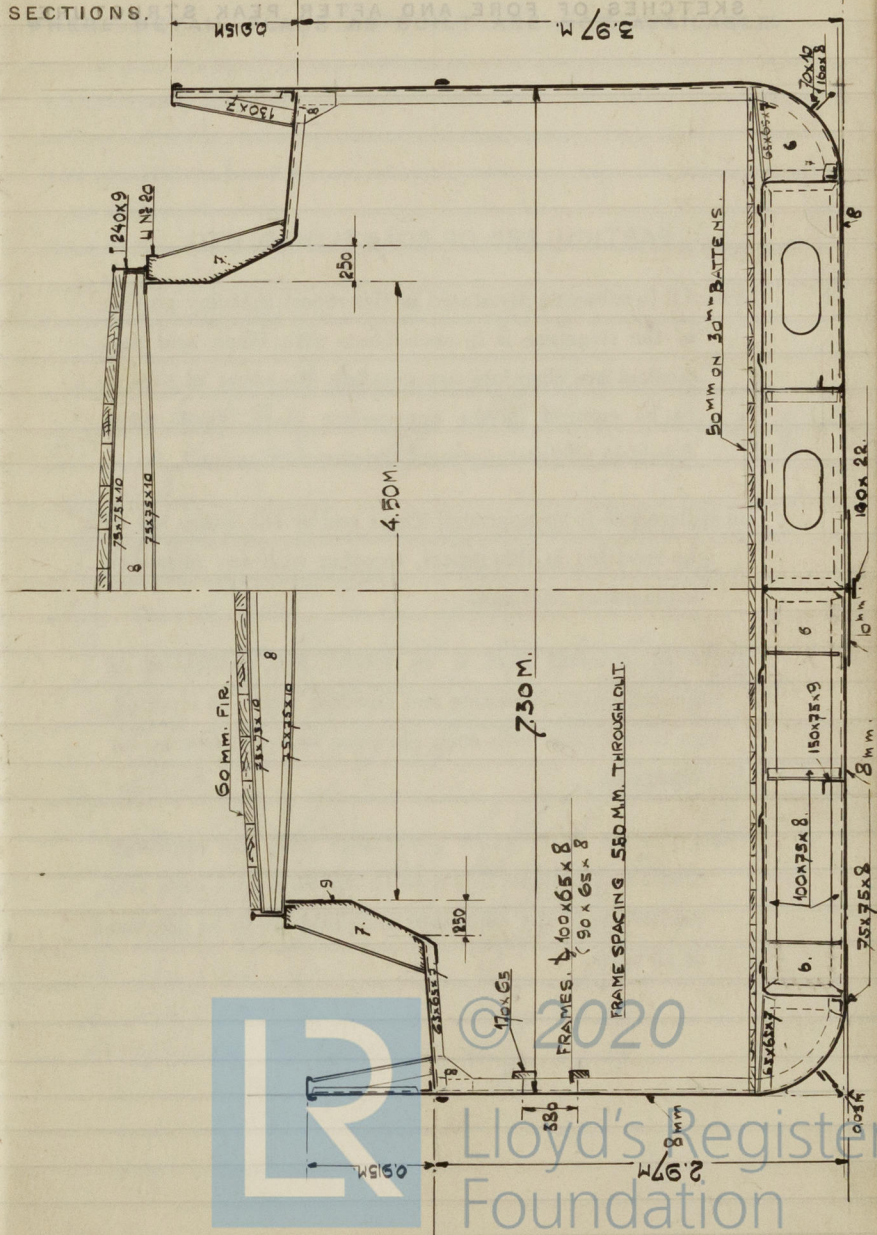


© 2000  
 Lloyd's Register  
 Foundation



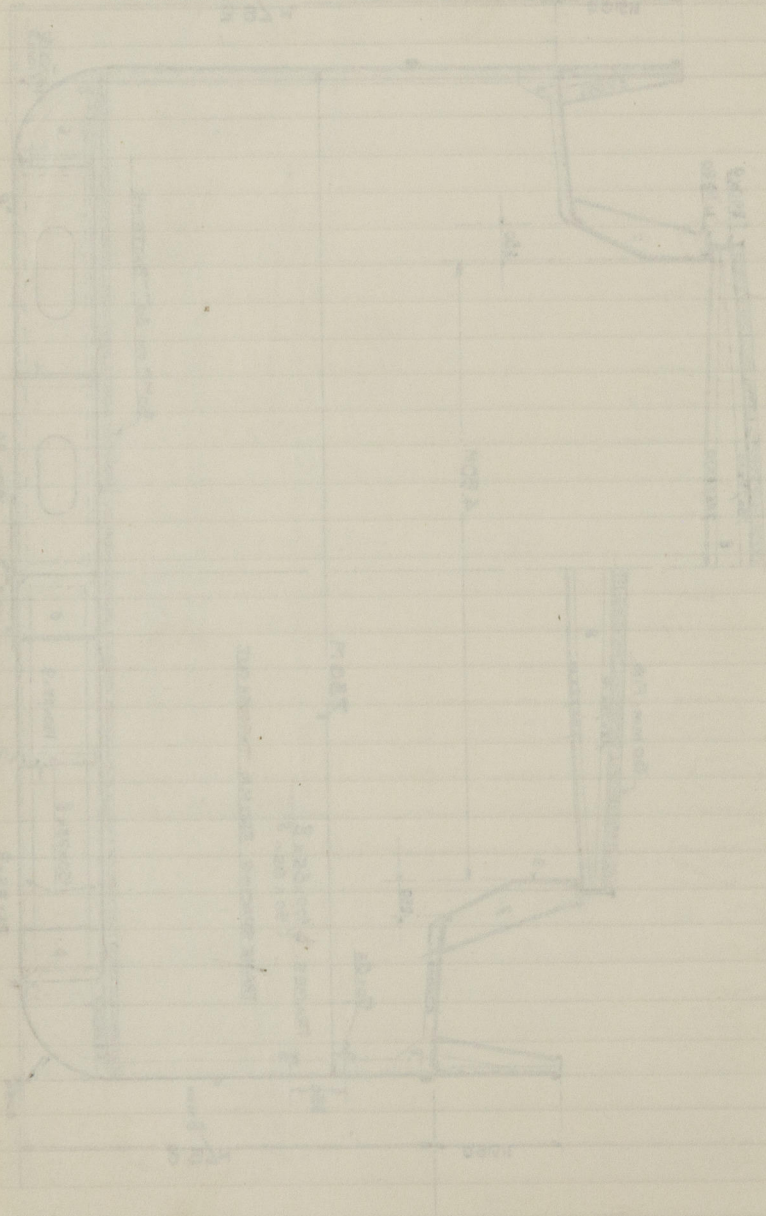
# SCANTLING

## SECTIONS.





# SKETCHES OF FORE AND AFTER PEAK STRUCTURE



WHERE DETAIL PLANS AS BUILT ARE NOT AVAILABLE.

## PARTICULARS OF SCANTLING, ETC.

Where it is subsequently stated in this report that any portion of the structure is in accordance with Plans and Particulars, it is therefore not detailed, the name of this is to be entered in the appropriate place, such plans should in all cases represent the structure as built.

All differences from approved Plans and/or the Rules are to be recorded in this report, together with any necessary explanatory sketches.

Where no detailed Plan is on record, full particulars of Scantlings, Construction and Riveting are to be reported in conjunction with such sketches as are necessary for clearance.

Where riveting is in close accordance with the approved Plans and/or Rules this is to be stated in each case and particulars of any departure therefrom are to be detailed in all cases.

in all cases



© 2020

Lloyd's Register  
Foundation



## PARTICULARS OF SCANTLINGS, ETC.

Where it is subsequently stated in this report that any portion of the structure is in accordance with Plans, and particulars are therefore not detailed, the name of plan is to be entered in the appropriate place. Such plans should in all cases represent the structure as built.

All differences from approved Plans and/or the Rules are to be recorded in this report, together with any necessary explanatory Sketches.

Where no detailed Plan is on record, full particulars of Scantlings, Construction and Riveting are to be reported, in conjunction with such Sketches as are necessary for clearness.

Where riveting is in exact accordance with the approved Plans and/or Rules this is to be stated in each case, and particulars of any departure therefrom are to be detailed in all cases.

## GENERAL.

### MATERIAL.

In the case of **Steel Ships** state particulars of Parts where Iron is used

In the case of **Wood Ships** state particulars of Wood used in different parts

In the case of **Reinforced Concrete Ships** state particulars of Concrete used in different parts and also Nature and Quality of Reinforcement

State, to the best of your knowledge, whether the Materials used have been tested, and are in accordance with the Rule requirements

Give particulars of all Tests carried out under your supervision or date of your Report thereon

*Part of anglebar and plates remaining from rebuilding N° 420, have been used for this ship, all with B.C. certificates.*

*Kelplates, made of stock material have been used, see our letters 27<sup>th</sup> and 29<sup>th</sup> July 1939.*

*Remaining parts as per certificate: plates: Delivered by S.A. d'Anglem. Athus, Belgique and tested by S. Reynolds 4-9-39.*

*anglebars: delivered by Gutchoffnungshütte Oberhausen A.G.*

*please see G.L.-B.C. certificates.*

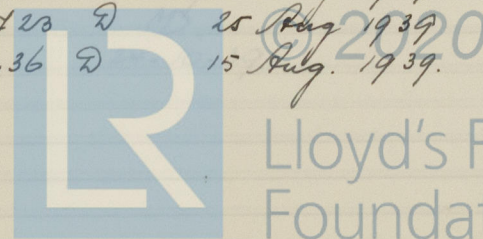
*N° 137467 A/D 15 Sept 1939*

*N° 137035 D 8 Sept 1939*

*N° 136724 W 25 Aug. 1939*

*N° 136728 D 25 Aug 1939*

*N° 136236 D 15 Aug. 1939.*



Lloyd's Register  
Foundation



## GENERAL—Continued.

## KEELS, STEMS, STERN FRAMES, AND RUDDERS.

State particulars, which do not appear on reference Plans, of Dimensions; Scarphs of Bar Keels; Stems; Stern Frames; Butts of Flat Plate Keels; Connections at Heel of Stems and Stern Frames to Hull; Rudder Stocks, Couplings, Pintles, Gudgeons, Rudder Arms, Riveting; and whether forged or cast; Arrangement and Scantlings of Spectacle Bossing or Propeller Brackets and state material.

State whether particulars not given are in accordance with approved Plans

State name of approved Plans and date of approval.

Keel. according appx. plan 8<sup>th</sup> May 1939.  
docking keel 160 x 22 mm. fitted, see our  
letters of 27<sup>th</sup> and 29<sup>th</sup> July 1939.

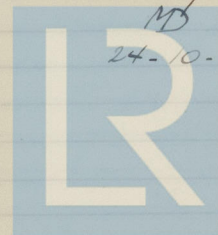
Stem. according approved plan of 8<sup>th</sup> May 1939

Stern frame. according approved plan 29<sup>th</sup> July 1939  
amendments carried out. See forging  
report N<sup>o</sup> 221.

Stamped B.C. Test  
N<sup>o</sup> 4655  
MD  
1-9-39.

Rudder. according approved plan 29<sup>th</sup> July '39  
amendments carried out.  
See forging report N<sup>o</sup> 221.

Stamped: B.C. Test.  
N<sup>o</sup> 4675



24-10-39.

© 2020

Lloyd's Register  
Foundation



## CENTRE KEELSONS (SINGLE BOTTOM).

State particulars, which do not appear on reference Plans, of Scantlings and Riveting, illustrated by Sketches of Construction, amidship, at ends, and under Boilers and Engines; of Connections to Keel; Horizontal

Top Plates; Rider Keelson; Floor Connections and End Connections.

State whether particulars not given are in accordance with approved Plans.

State name of approved Plans and date of approval.

Centre Keelson Height and thickness as per approved plan 8<sup>th</sup> May 1939. Connected to Keelstrake and Tanktop by electric welding. Stiffened between the floors from frame 19 to forward. (see our letter 29<sup>th</sup> July 1939).

## SINGLE BOTTOMS.

State particulars, which do not appear on reference Plans, of Floors, Frames, Reverse Frames, Side Girders, Engine and Thrust Seats, Boiler Bearers, End Floors, Bessing, and Transom Floors.

State whether particulars not given are in accordance with approved Plans.

State name of approved Plans and date of approval.

Single bottom from frame 56-65, as per approved plan 8<sup>th</sup> May 1939. Knees from frame to Centre Girders fitted.



© 2020

Lloyd's Register  
Foundation



## SINGLE BOTTOMS—Continued.

## DOUBLE BOTTOM.

State particulars, which do not appear on reference Plans, of Scantlings and Riveting, illustrated by Sketches of Construction, of Centre Girders Amidships, at Ends, and under Boilers and Engines; End Connections; Manholes in Centre Girder and Compensation where fitted; Centre Girder where watertight; Scantlings, &c., of Solid Floors; Frames and Reverse Frames on Solid Floors; Stiffeners on Tank End Floors; Open Floors, extent and spacing; Open Floor Frames, Reverses, Struts, and Brackets; Tank Top Plating, Butts, and Seams; Sheathing; Margin Plates; Margin Brackets to hold Frames; Connection to Tank Margin and Frames; Gussets; Intercoastal Girders, amidships, under Engines, Thrust, Boilers, and Boiler Bearers; Arrangement and Spacing at Ends; Engine and Thrust Seatings; Stiffening under Wide Spaced Pillars and Air Pipes in each Compartment of Double Bottom.

State whether particulars not given are in accordance with approved Plans.

State name of approved Plans and date of approval.

				Date.	Surveyor's Initial.
No. 1 Compartment (forward) tested and found satisfactory					
			SB	28-2-'40	D
			PS	26-2-'40	A
" 2	"	"	"		
			SB	29-2-'40	A
			PS	29-2-'40	A
" 3	"	"	"		
			SB	26-2-'40	A
			PS	28-2-'40	D
" 4	"	"	"		
" 5	"	"	"		
" 6	"	"	"		

Double bottom carried out according approved plan 8<sup>th</sup> May 1940.  
Centre girder welded electrically to keel and bladder line stake.  
W.T. floor on frame 1<sup>st</sup> 23 on struts and carried out as full floor.  
Open floors: frames and reverse frames.  
4 100 x 75 x 8, struts for side girder



## DOUBLE BOTTOM—Continued.

7 100 x 75 x 8.

## HOLD FRAMES AND REVERSE FRAMES

State particulars, which do not appear on reference Plans, of all Framing in Holds; Bunkers; Boiler Space

Engine Space; Deep Tanks; at Tunnel Flats; also Connections at Head and Heel.

State whether particulars not given are in accordance with approved Plans.

State name of approved Plans and date of approval.

Hold frames: Frame 20-56 7 100 x 65 x 8  
Frame 57-64 7 90 x 65 x 8

Reverse frames Frames N<sup>o</sup> 22, 25, 28, 31, 34,  
N<sup>o</sup> 37, 40, 41, 42, 43  
N<sup>o</sup> 45, 47, 50, 53, 56  
N<sup>o</sup> 59. 7 65 x 65 x 8.

Intermediate Frames in way of hold  
7 90 x 65 x 8.



© 2020

Lloyd's Register  
Foundation



## HOLD FRAMES AND REVERSE FRAMES—Continued.

## TWEEN DECK FRAMING.

State particulars, which do not appear on reference Plans, of Framing in various "Tween Decks.

State whether particulars not given are in accordance with approved Plans.

State name of approved Plans and date of approval.



© 2020

Lloyd's Register  
Foundation



## WEB FRAMES AND SIDE STRINGERS.

State particulars, which do not appear on reference Plans, of Scantlings; Spacing; Attachments at Head and Heel; Reverse Frames; Ends of Side Stringers; Beams at Heads of Web Frames.

State whether particulars not given are in accordance with approved Plans.

State name of approved Plans and date of approval.

## WEB FRAMES AND SIDE STRINGERS—Continued.



© 2020

Lloyd's Register  
Foundation



HOLD KEELSONS AND STRINGERS. *NEW*

State particulars, which do not appear on reference Plans, of Side Keelsons, Scantlings and Spacing Amidships, E. & B. Space, and Forward, and Connections to Floor Plates; Side Stringers, Scantlings, Extent, Spacing; Butts of Continuous Side Keelsons and Side Stringers; Connections to Bulkheads; Hold Stringers, Scantlings, and End Connections

State whether particulars not given are in accordance with approved Plans.

State name of approved Plans and date of approval.

## HOLD KEELSONS AND STRINGERS—Continued,



© 2020

Lloyd's Register  
Foundation



## BEAMS.

State particulars, which do not appear on reference Plans, of Spacing and Scantlings of Beams, Half Beams, Beam Knees and Lug Connections to Girders and Hatch Coamings on all Decks; Beams of Deep Tank Tops, Tunnel Tops, Bulkhead Recesses, Open Decks, Transom Beams, Wide Spaced Hold Beams, and Strong Beams in Machinery Space.

State whether particulars not given are in accordance with approved Plans.

State name of approved Plans and date of approval.

Beams. according approved plan  
8<sup>th</sup> May 1939.

## BEAMS—Continued.



© 2020

Lloyd's Register  
Foundation



## STANCHIONS, PILLARS, AND GIRDERS.

State particulars, which do not appear on reference Plans, of number of Rows of Stanchions and where fitted ; distance out from Centre Line of Girders or Runners ; Spacing, Type, and General Scantlings of Stanchions, Pillars and Girders ; Attachment at Heads and Heels of Stanchions and Pillars ; Pillars in Engine Room ; Attachment of Girders to Bulkheads and at Hatch Corners, Supports under Bulkhead Recesses and Deep Tanks ; Supports at ends and corners of Deckhouses and Erections ; extent and details of Longitudinal Cargo Divisions.

State whether particulars not given are in accordance with approved Plans.

State name of approved Plans and date of approval.

*Girders, as per approved plan  
18<sup>th</sup> May 1939.*

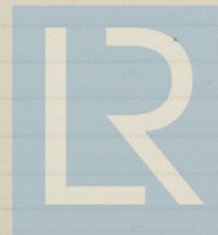
*Pillars fitted:*

*In Engine room 5 B frame 15*

*2 90 x 90 x 10*

*In poop space frame N<sup>o</sup> 3 2 $\frac{1}{2}$   $\phi$*

## STANCHIONS, PILLARS, AND GIRDERS—Continued.



© 2020

Lloyd's Register  
Foundation



## WATERTIGHT BULKHEADS.

State particulars, which do not appear on reference Plans, of Watertight Bulkheads as given on page 3;

Webs in Tween Decks above Bulkheads; Attachments; Sluice Valves and Cocks.

State whether particulars not given are in accordance with approved Plans.

State name of approved Plans and date of approval.

(See also page 5)

*W.T. Bulkheads according approved  
plan 8<sup>th</sup> May 1939.  
All stiffeners welded to bulkheads.*

## WATERTIGHT DOORS.

State particulars, which do not appear on reference Plans, of Watertight Doors, where situated, Type, where controlled from, Makers, Buttresses at Sides of Doors; particulars of Testing.

State whether particulars not given are in accordance with approved Plans.

State name of approved Plans and date of approval.



© 2020

Lloyd's Register  
Foundation



## WATERTIGHT BULKHEADS—TESTING.

State particulars and dates of tests of Watertight Bulkheads.

Forepeak bulkhead tested, when testing  
forepeak 26-2-40 A.  
Engine room bulkhead hose tested  
4-3-40 MD and 29-3-40 S  
Aft peak bulkhead tested, when testing  
afterpeak 22-12-39 MD.

## WATERTIGHT BULKHEADS—TESTING—Continued.



© 2020

Lloyd's Register  
Foundation



## PANTING ARRANGEMENTS (OUTSIDE PEAKS).

State Particulars, which do not appear on reference Plans, illustrated by Sketches of Construction, of Scantling Arrangements, Heights of End Floors; Panting Beams and Stringers; Pillars; Shell Lugs on Stringers and Flats; Attachments of Stiffeners and Framing to Stringers.

State whether particulars not given are in accordance with approved Plans.

State name of approved Plans and date of approval.

## PANTING ARRANGEMENTS—Continued.



© 2020

Lloyd's Register  
Foundation



## SHELL PLATING.

State particulars, which do not appear on reference Plans, of number of Strakes of Plating, average Length and Width Amidships; Thickness of Side Plating Amidships and at Ends; Bottom Plating Amidships, Ends, and Flat of Floor Forward; End Connections; Seam Connections; Construction at Breaks of Erections; Compensation in way of Cargo Doors, Sidelights and other Openings; Doublings where fitted; Forefoot Plate, After Hood Plating, Boss Plating; Sheerstrakes, Topside Plating, Garboard Strakes with Bar Keels; Gunwale Angles and Mouldings.

State whether particulars not given are in accordance with approved Plans.

State name of approved Plans and date of approval.

*Shellplating according approved  
plan 8<sup>th</sup> May 1939*

## SHELL PLATING—Continued.



© 2020

Lloyd's Register  
Foundation



## DECKS.

State particulars, which do not appear on reference Plans, of which Decks are Weather Decks, Freeboard Decks, Second, Third, &c., and Platform Decks; Scantlings of Plating and Areas in square inches of Plating abreast Machinery Openings, Hatches Amidships and at Ends; Stringer Plates Amidships and at Ends; End Connections and Seam Riveting in each case; Doublings at Hatch Corners; Size of Corner Angles; Wood Sheathing and Deck Compositions; Watertight Cement Chocks on Freeboard Deck, whether Chocks are fitted in other Decks, and particulars of all Chocks fitted in each Deck and Flat; Rusted Iron Chocks, W.T. Collars, Coaming Angles and Mast Collars; Riveting of Coaming Angles, Gutter Angles, Chock Angles, and particulars of Water Testing of Decks.

State whether particulars not given are in accordance with approved Plans.

State name of approved Plans and date of approval.

Decks, according approved plan  
8<sup>th</sup> May 1939.  
Hatched 4-3-40 MD

## DECKS—Continued.



© 2020

Lloyd's Register  
Foundation



## CEILING AND SPARRING.

State particulars, which do not appear on reference Plans, of Close Ceiling and how fastened in Holds and Bunkers; if Tank Top Ceiled where Double Bottom is used for Oil Fuel; Sparring and how fastened in Holds, Tween Decks; Manhole Covers, and Protection.

State whether particulars not given are in accordance with approved Plans.

State name of approved Plans and date of approval.

*Ceiling in hold, fir 50<sup>mm</sup> on battens  
30 m. m. thick.  
Sparring in hold, fir 170 x 65 m. m. ± 400 m. m.  
apart, fitted with hooks to the  
frames.  
Manhole covers, steel plates and  
protected by wooden covers.*

## HATCHWAYS. SUPERSTRUCTURES. DECKINGS.

State particulars, which do not appear on reference Plans or L.L. 4 D. Form:— 1st Superstructure, Length and Height ; 2nd Superstructure, Length and Height ;  
illustrate by Sketches of Cross Section through Superstructures; Coaming and Top Angles; Plating Amidships, at Ends; Riveting of Seams; Doublings at Windows and Doorways; Top Plating; Stiffening; Beams; Web Plates and Partial Bulkheads; Breaks in continuity; and Bulkheads at End of Erections on Freeboard Deck.

State whether particulars not given are in accordance with approved Plans.

State name of approved Plans and date of approval.

*See LL 4<sup>o</sup>/5 form.*



© 2020

Lloyd's Register  
Foundation



## SUPERSTRUCTURES—Continued.

## HATCHWAYS AND OTHER DECK OPENINGS.

State particulars, which do not appear on reference Plans or L.L. 4 D. Form, of Dimensions of Openings in different Decks; Scantlings of Coamings; Coaming Angles; Side Stiffeners; Stays; Spacing and Scantlings of Hatch Webs; Hatch Covers; Details of Hatch Corner Construction; Mast Openings; Engine and Boiler Openings, and Casings and Companion Ways.

State whether particulars not given are in accordance with approved Plans.

State name of approved Plans and date of approval.

Hatchways. as per approved plan  
8<sup>th</sup> May 1940.



© 2020

Lloyd's Register  
Foundation



## DECK OPENINGS—Continued.

## MACHINERY SPACE AND TUNNEL.

State particulars, which do not appear on reference Plans, of Through Beams and Stanchions in Machinery Space; Engine Seating; Thrust Seating; Boiler Stools; Thrust Stools; Bossing Arrangements; Scantlings of Stiffeners; Plating and Coaming Angles of Tunnels and Tunnel Recesses; Escape Hatches; Stiffening of Tunnels under Stanchions; and particulars and dates of Water Testing Tunnels.

State whether particulars not given are in accordance with approved Plans.

State name of approved Plans and date of approval.

Machinery space, as per approved  
plan 8<sup>th</sup> May 1939.  
as per approved plan  
Engine seating. 27.7.39.



© 2020

Lloyd's Register  
Foundation



## RIVETING AND CAULKING.

*All riveting and caulking  
according to rule requirements.  
All rivets delivered with P.C.  
certificates.*

## ELECTRIC WELDING.

State particulars of Electrodes, Manufacturers, sizes of Electrodes, Voltage, Amperage, Rates of Deposit, &c.,  
arrangements for skilled supervision of work in the Yard; Particulars of Tests, including Samples of work  
in Yard.

Portions of Structure where Electric Welding used, Thickness of Material Welded, Size and Types of Welds,  
Angles of Edges and Clearance of Base in Butt Welds, Depth and Width of Lap Welds, and Connections  
of Plates and Bars.

*Electrodes used: Philips 48-50  
in various diameters as required.*

*Centre Girders to keelstake and  
to Innerbottomplating.  
Sidegirders to bottomplating.  
Stiffeners to bulkheadplating.  
Strops to Centre Girders, to  
marginplate  
Stanchions to hatchcoamings.*

*All welding with required amperage  
and diameter of electrodes.*



© 2020

Lloyd's Register  
Foundation



## ELECTRIC WELDING—Continued.

## BULWARKS, PORTS, SCUPPERS, ETC.

State particulars, which do not appear on reference Plans or L.L. 4 D. Form, of Length and Height of Bulwarks; Freeing Port Area; Construction of Freeing Ports; Details of Gangway Doors, Scuppers from Watertight Decks; Soil Pipe Elbows below Freeboard Deck.

State whether particulars not given are in accordance with approved Plans.

State name of approved Plans and date of approval.

See L.L. 4 D. form.



© 2020

Lloyd's Register  
Foundation



## BULWARKS, PORTS, SCUPPERS, ETC.—Continued

## VENTILATORS AND SIDE SCUTTLES.

State particulars, which do not appear on reference Plans or L.L. 4 D. Form, of Coaming Heights; Thicknesses; Deck Connections of Hold Ventilators on Weather Portions of Freeboard Decks; Bridge Decks; Forecastle and Poop Decks; Ventilators to Holds and Tunnels and Side Scuttles in Tween Decks; means of Closing.

State whether particulars not given are in accordance with approved Plans.

State name of approved Plans and date of approval.

*See L.L. 4 D form.*

*Particulars given in reference to approved plans of the 18th 19th 20th 21st 22nd 23rd 24th 25th 26th 27th 28th 29th 30th 31st 32nd 33rd 34th 35th 36th 37th 38th 39th 40th 41st 42nd 43rd 44th 45th 46th 47th 48th 49th 50th 51st 52nd 53rd 54th 55th 56th 57th 58th 59th 60th 61st 62nd 63rd 64th 65th 66th 67th 68th 69th 70th 71st 72nd 73rd 74th 75th 76th 77th 78th 79th 80th 81st 82nd 83rd 84th 85th 86th 87th 88th 89th 90th 91st 92nd 93rd 94th 95th 96th 97th 98th 99th 100th 101st 102nd 103rd 104th 105th 106th 107th 108th 109th 110th 111th 112th 113th 114th 115th 116th 117th 118th 119th 120th 121st 122nd 123rd 124th 125th 126th 127th 128th 129th 130th 131st 132nd 133rd 134th 135th 136th 137th 138th 139th 140th 141st 142nd 143rd 144th 145th 146th 147th 148th 149th 150th 151st 152nd 153rd 154th 155th 156th 157th 158th 159th 160th 161st 162nd 163rd 164th 165th 166th 167th 168th 169th 170th 171st 172nd 173rd 174th 175th 176th 177th 178th 179th 180th 181st 182nd 183rd 184th 185th 186th 187th 188th 189th 190th 191st 192nd 193rd 194th 195th 196th 197th 198th 199th 200th 201st 202nd 203rd 204th 205th 206th 207th 208th 209th 210th 211th 212th 213th 214th 215th 216th 217th 218th 219th 220th 221st 222nd 223rd 224th 225th 226th 227th 228th 229th 230th 231st 232nd 233rd 234th 235th 236th 237th 238th 239th 240th 241st 242nd 243rd 244th 245th 246th 247th 248th 249th 250th 251st 252nd 253rd 254th 255th 256th 257th 258th 259th 260th 261st 262nd 263rd 264th 265th 266th 267th 268th 269th 270th 271st 272nd 273rd 274th 275th 276th 277th 278th 279th 280th 281st 282nd 283rd 284th 285th 286th 287th 288th 289th 290th 291st 292nd 293rd 294th 295th 296th 297th 298th 299th 300th 301st 302nd 303rd 304th 305th 306th 307th 308th 309th 310th 311th 312th 313th 314th 315th 316th 317th 318th 319th 320th 321st 322nd 323rd 324th 325th 326th 327th 328th 329th 330th 331st 332nd 333rd 334th 335th 336th 337th 338th 339th 340th 341st 342nd 343rd 344th 345th 346th 347th 348th 349th 350th 351st 352nd 353rd 354th 355th 356th 357th 358th 359th 360th 361st 362nd 363rd 364th 365th 366th 367th 368th 369th 370th 371st 372nd 373rd 374th 375th 376th 377th 378th 379th 380th 381st 382nd 383rd 384th 385th 386th 387th 388th 389th 390th 391st 392nd 393rd 394th 395th 396th 397th 398th 399th 400th 401st 402nd 403rd 404th 405th 406th 407th 408th 409th 410th 411th 412th 413th 414th 415th 416th 417th 418th 419th 420th 421st 422nd 423rd 424th 425th 426th 427th 428th 429th 430th 431st 432nd 433rd 434th 435th 436th 437th 438th 439th 440th 441st 442nd 443rd 444th 445th 446th 447th 448th 449th 450th 451st 452nd 453rd 454th 455th 456th 457th 458th 459th 460th 461st 462nd 463rd 464th 465th 466th 467th 468th 469th 470th 471st 472nd 473rd 474th 475th 476th 477th 478th 479th 480th 481st 482nd 483rd 484th 485th 486th 487th 488th 489th 490th 491st 492nd 493rd 494th 495th 496th 497th 498th 499th 500th 501st 502nd 503rd 504th 505th 506th 507th 508th 509th 510th 511th 512th 513th 514th 515th 516th 517th 518th 519th 520th 521st 522nd 523rd 524th 525th 526th 527th 528th 529th 530th 531st 532nd 533rd 534th 535th 536th 537th 538th 539th 540th 541st 542nd 543rd 544th 545th 546th 547th 548th 549th 550th 551st 552nd 553rd 554th 555th 556th 557th 558th 559th 560th 561st 562nd 563rd 564th 565th 566th 567th 568th 569th 570th 571st 572nd 573rd 574th 575th 576th 577th 578th 579th 580th 581st 582nd 583rd 584th 585th 586th 587th 588th 589th 590th 591st 592nd 593rd 594th 595th 596th 597th 598th 599th 600th 601st 602nd 603rd 604th 605th 606th 607th 608th 609th 610th 611th 612th 613th 614th 615th 616th 617th 618th 619th 620th 621st 622nd 623rd 624th 625th 626th 627th 628th 629th 630th 631st 632nd 633rd 634th 635th 636th 637th 638th 639th 640th 641st 642nd 643rd 644th 645th 646th 647th 648th 649th 650th 651st 652nd 653rd 654th 655th 656th 657th 658th 659th 660th 661st 662nd 663rd 664th 665th 666th 667th 668th 669th 670th 671st 672nd 673rd 674th 675th 676th 677th 678th 679th 680th 681st 682nd 683rd 684th 685th 686th 687th 688th 689th 690th 691st 692nd 693rd 694th 695th 696th 697th 698th 699th 700th 701st 702nd 703rd 704th 705th 706th 707th 708th 709th 710th 711th 712th 713th 714th 715th 716th 717th 718th 719th 720th 721st 722nd 723rd 724th 725th 726th 727th 728th 729th 730th 731st 732nd 733rd 734th 735th 736th 737th 738th 739th 740th 741st 742nd 743rd 744th 745th 746th 747th 748th 749th 750th 751st 752nd 753rd 754th 755th 756th 757th 758th 759th 760th 761st 762nd 763rd 764th 765th 766th 767th 768th 769th 770th 771st 772nd 773rd 774th 775th 776th 777th 778th 779th 780th 781st 782nd 783rd 784th 785th 786th 787th 788th 789th 790th 791st 792nd 793rd 794th 795th 796th 797th 798th 799th 800th 801st 802nd 803rd 804th 805th 806th 807th 808th 809th 810th 811th 812th 813th 814th 815th 816th 817th 818th 819th 820th 821st 822nd 823rd 824th 825th 826th 827th 828th 829th 830th 831st 832nd 833rd 834th 835th 836th 837th 838th 839th 840th 841st 842nd 843rd 844th 845th 846th 847th 848th 849th 850th 851st 852nd 853rd 854th 855th 856th 857th 858th 859th 860th 861st 862nd 863rd 864th 865th 866th 867th 868th 869th 870th 871st 872nd 873rd 874th 875th 876th 877th 878th 879th 880th 881st 882nd 883rd 884th 885th 886th 887th 888th 889th 890th 891st 892nd 893rd 894th 895th 896th 897th 898th 899th 900th 901st 902nd 903rd 904th 905th 906th 907th 908th 909th 910th 911th 912th 913th 914th 915th 916th 917th 918th 919th 920th 921st 922nd 923rd 924th 925th 926th 927th 928th 929th 930th 931st 932nd 933rd 934th 935th 936th 937th 938th 939th 940th 941st 942nd 943rd 944th 945th 946th 947th 948th 949th 950th 951st 952nd 953rd 954th 955th 956th 957th 958th 959th 960th 961st 962nd 963rd 964th 965th 966th 967th 968th 969th 970th 971st 972nd 973rd 974th 975th 976th 977th 978th 979th 980th 981st 982nd 983rd 984th 985th 986th 987th 988th 989th 990th 991st 992nd 993rd 994th 995th 996th 997th 998th 999th 1000th 1001st 1002nd 1003rd 1004th 1005th 1006th 1007th 1008th 1009th 1010th 1011th 1012th 1013th 1014th 1015th 1016th 1017th 1018th 1019th 1020th 1021st 1022nd 1023rd 1024th 1025th 1026th 1027th 1028th 1029th 1030th 1031st 1032nd 1033rd 1034th 1035th 1036th 1037th 1038th 1039th 1040th 1041st 1042nd 1043rd 1044th 1045th 1046th 1047th 1048th 1049th 1050th 1051st 1052nd 1053rd 1054th 1055th 1056th 1057th 1058th 1059th 1060th 1061st 1062nd 1063rd 1064th 1065th 1066th 1067th 1068th 1069th 1070th 1071st 1072nd 1073rd 1074th 1075th 1076th 1077th 1078th 1079th 1080th 1081st 1082nd 1083rd 1084th 1085th 1086th 1087th 1088th 1089th 1090th 1091st 1092nd 1093rd 1094th 1095th 1096th 1097th 1098th 1099th 1100th 1101st 1102nd 1103rd 1104th 1105th 1106th 1107th 1108th 1109th 1110th 1111th 1112th 1113th 1114th 1115th 1116th 1117th 1118th 1119th 1120th 1121st 1122nd 1123rd 1124th 1125th 1126th 1127th 1128th 1129th 1130th 1131st 1132nd 1133rd 1134th 1135th 1136th 1137th 1138th 1139th 1140th 1141st 1142nd 1143rd 1144th 1145th 1146th 1147th 1148th 1149th 1150th 1151st 1152nd 1153rd 1154th 1155th 1156th 1157th 1158th 1159th 1160th 1161st 1162nd 1163rd 1164th 1165th 1166th 1167th 1168th 1169th 1170th 1171st 1172nd 1173rd 1174th 1175th 1176th 1177th 1178th 1179th 1180th 1181st 1182nd 1183rd 1184th 1185th 1186th 1187th 1188th 1189th 1190th 1191st 1192nd 1193rd 1194th 1195th 1196th 1197th 1198th 1199th 1200th 1201st 1202nd 1203rd 1204th 1205th 1206th 1207th 1208th 1209th 1210th 1211th 1212th 1213th 1214th 1215th 1216th 1217th 1218th 1219th 1220th 1221st 1222nd 1223rd 1224th 1225th 1226th 1227th 1228th 1229th 1230th 1231st 1232nd 1233rd 1234th 1235th 1236th 1237th 1238th 1239th 1240th 1241st 1242nd 1243rd 1244th 1245th 1246th 1247th 1248th 1249th 1250th 1251st 1252nd 1253rd 1254th 1255th 1256th 1257th 1258th 1259th 1260th 1261st 1262nd 1263rd 1264th 1265th 1266th 1267th 1268th 1269th 1270th 1271st 1272nd 1273rd 1274th 1275th 1276th 1277th 1278th 1279th 1280th 1281st 1282nd 1283rd 1284th 1285th 1286th 1287th 1288th 1289th 1290th 1291st 1292nd 1293rd 1294th 1295th 1296th 1297th 1298th 1299th 1300th 1301st 1302nd 1303rd 1304th 1305th 1306th 1307th 1308th 1309th 1310th 1311th 1312th 1313th 1314th 1315th 1316th 1317th 1318th 1319th 1320th 1321st 1322nd 1323rd 1324th 1325th 1326th 1327th 1328th 1329th 1330th 1331st 1332nd 1333rd 1334th 1335th 1336th 1337th 1338th 1339th 1340th 1341st 1342nd 1343rd 1344th 1345th 1346th 1347th 1348th 1349th 1350th 1351st 1352nd 1353rd 1354th 1355th 1356th 1357th 1358th 1359th 1360th 1361st 1362nd 1363rd 1364th 1365th 1366th 1367th 1368th 1369th 1370th 1371st 1372nd 1373rd 1374th 1375th 1376th 1377th 1378th 1379th 1380th 1381st 1382nd 1383rd 1384th 1385th 1386th 1387th 1388th 1389th 1390th 1391st 1392nd 1393rd 1394th 1395th 1396th 1397th 1398th 1399th 1400th 1401st 1402nd 1403rd 1404th 1405th 1406th 1407th 1408th 1409th 1410th 1411th 1412th 1413th 1414th 1415th 1416th 1417th 1418th 1419th 1420th 1421st 1422nd 1423rd 1424th 1425th 1426th 1427th 1428th 1429th 1430th 1431st 1432nd 1433rd 1434th 1435th 1436th 1437th 1438th 1439th 1440th 1441st 1442nd 1443rd 1444th 1445th 1446th 1447th 1448th 1449th 1450th 1451st 1452nd 1453rd 1454th 1455th 1456th 1457th 1458th 1459th 1460th 1461st 1462nd 1463rd 1464th 1465th 1466th 1467th 1468th 1469th 1470th 1471st 1472nd 1473rd 1474th 1475th 1476th 1477th 1478th 1479th 1480th 1481st 1482nd 1483rd 1484th 1485th 1486th 1487th 1488th 1489th 1490th 1491st 1492nd 1493rd 1494th 1495th 1496th 1497th 1498th 1499th 1500th 1501st 1502nd 1503rd 1504th 1505th 1506th 1507th 1508th 1509th 1510th 1511th 1512th 1513th 1514th 1515th 1516th 1517th 1518th 1519th 1520th 1521st 1522nd 1523rd 1524th 1525th 1526th 1527th 1528th 1529th 1530th 1531st 1532nd 1533rd 1534th 1535th 1536th 1537th 1538th 1539th 1540th 1541st 1542nd 1543rd 1544th 1545th 1546th 1547th 1548th 1549th 1550th 1551st 1552nd 1553rd 1554th 1555th 1556th 1557th 1558th 1559th 1560th 1561st 1562nd 1563rd 1564th 1565th 1566th 1567th 1568th 1569th 1570th 1571st 1572nd 1573rd 1574th 1575th 1576th 1577th 1578th 1579th 1580th 1581st 1582nd 1583rd 1584th 1585th 1586th 1587th 1588th 1589th 1590th 1591st 1592nd 1593rd 1594th 1595th 1596th 1597th 1598th 1599th 1600th 1601st 1602nd 1603rd 1604th 1605th 1606th 1607th 1608th 1609th 1610th 1611th 1612th 1613th 1614th 1615th 1616th 1617th 1618th 1619th 1620th 1621st 1622nd 1623rd 1624th 1625th 1626th 1627th 1628th 1629th 1630th 1631st 1632nd 1633rd 1634th 1635th 1636th 1637th 1638th 1639th 1640th 1641st 1642nd 1643rd 1644th 1645th 1646th 1647th 1648th 1649th 1650th 1651st 1652nd 1653rd 1654th 1655th 1656th 1657th 1658th 1659th 1660th 1661st 1662nd 1663rd 1664th 1665th 1666th 1667th 1668th 1669th 1670th 1671st 1672nd 1673rd 1674th 1675th 1676th 1677th 1678th 1679th 1680th 1681st 1682nd 1683rd 1684th 1685th 1686th 1687th 1688th 1689th 1690th 1691st 1692nd 1693rd 1694th 1695th 1696th 1697th 1698th 1699th 1700th 1701st 1702nd 1703rd 1704th 1705th 1706th 1707th 1708th 1709th 1710th 1711th 1712th 1713th 1714th 1715th 1716th 1717th 1718th 1719th 1720th 1721st 1722nd 1723rd 1724th 1725th 1726th 1727th 1728th 1729th 1730th 1731st 1732nd 1733rd 1734th 1735th 1736th 1737th 1738th 1739th 1740th 1741st 1742nd 1743rd 1744th 1745th 1746th 1747th 1748th 1749th 1750th 1751st 1752nd 1753rd 1754th 1755th 1756th 1757th 1758th 1759th 1760th 1761st 1762nd 1763rd 1764th 1765th 1766th 1767th 1768th 1769th 1770th 1771st 1772nd 1773rd 1774th 1775th 1776th 1777th 1778th 1779th 1780th 1781st 1782nd 1783rd 1784th 1785th 1786th 1787th 1788th 1789th 1790th 1791st 1792nd 1793rd 1794th 1795th 1796th 1797th 1798th 1799th 1800th 1801st 1802nd 1803rd 1804th 1805th 1806th 1807th 1808th 1809th 1810th 1811th 1812th 1813th 1814th 1815th 1816th 1817th 1818th 1819th 1820th 1821st 1822nd 1823rd 1824th 1825th 1826th 1827th 1828th 1829th 1830th 1831st 1832nd 1833rd 1834th 1835th 1836th 1837th 1838th 1839th 1840th 1841st 1842nd 1843rd 1844th 1845th 1846th 1847th 1848th 1849th 1850th 1851st 1852nd 1853rd 1854th 1855th 1856th 1857th 1858th 1859th 1860th 1861st 1862nd 1863rd 1864th 1865th 1866th 1867th 1868th 1869th 1870th 1871st 1872nd 1873rd 1874th 1875th 1876th 1877th 1878th 1879th 1880th 1881st 1882nd 1883rd 1884th 1885th 1886th 1887th 1888th 1889th 1890th 1891st 1892nd 1893rd 1894th 1895th 1896th 1897th 1898th 1899th 1900th 1901st 1902nd 1903rd 1904th 1905th 1906th 1907th 1908th 1909th 1910th 1911th 1912th 1913th 1914th 1915th 1916th 1917th 1918th 1919th 1920th 1921st 1922nd 1923rd 1924th 1925th 1926th 1927th 1928th 1929th 1930th 1931st 1932nd 1933rd 1934th 1935th 1936th 1937th 1938th 1939th 1940th 1941st 1942nd 1943rd 1944th 1945th 1946th 1947th 1948th 1949th 1950th 1951st 1952nd 1953rd 1954th 1955th 1956th 1957th 1958th 1959th 1960th 1961st 1962nd 1963rd 1964th 1965th 1966th 1967th 1968th 1969th 1970th 1971st 1972nd 1973rd 1974th 1975th 1976th 1977th 1978th 1979th 1980th 1981st 1982nd 1983rd 1984th 1985th 1986th 1987th 1988th 1989th 1990th 1991st 1992nd 1993rd 1994th 1995th 1996th 1997th 1998th 1999th 2000th 2001st 2002nd 2003rd 2004th 2005th 2006th 2007th 2008th 2009th 2010th 2011th 2012th 2013th 2014th 2015th 2016th 2017th 2018th 2019th 2020th 2021st 2022nd 2023rd 2024th 2025th 2026th 2027th 2028th 2029th 2030th 2031st 2032nd 2033rd 2034th 2035th 2036th 2037th 2038th 2039th 2040th 2041st 2042nd 2043rd 2044th 2045th 2046th 2047th 2048th 2049th 2050th 2051st 2052nd 2053rd 2054th 2055th 2056th 2057th 2058th 2059th 2060th 2061st 2062nd 2063rd 2064th 2065th 2066th 2067th 2068th 2069th 2070th 2071st 2072nd 2073rd 2074th 2075th 2076th 2077th 2078th 2079th 2080th 2081st 2082nd 2083rd 2084th 2085th 2086th 2087th 2088th 2089th 2090th 2091st 2092nd 2093rd 2094th 2095th 2096th 2097th 2098th 2099th 2100th 2101st 2102nd 2103rd 2104th 2105th 2106th 2107th 2108th 2109th 2110th 2111th 2112th 2113th 2114th 2115th 2116th 2117th 2118th 2119th 2120th 2121st 2122nd 2123rd 2124th 2125th 2126th 2127th 2128th 2129th 2130th 2131st 2132nd 2133rd 2134th 2135th 2136th 2137th 2138th 2139th 2140th 2141st 2142nd 2143rd 2144th 2145th 2146th 2147th 2148th 2149th 2150th 2151st 2152nd 2153rd 2154th 2155th 2156th 2157th 2158th 2159th 2160th 2161st 2162nd 2163rd 2164th 2165th 2166th 2167th 2168th 2169th 2170th 2171st 2172nd 2173rd 2174th 2175th 2176th 2177th 2178th 2179th 2180th 2181st 2182nd 2183rd 21*



## VENTILATORS AND SIDE SCUTTLES—Continued.

## PUMPING ARRANGEMENTS.

State particulars, which do not appear on reference Plans, of Hand Pumps or Power Pumps and from which Deck they are operated; Hand Pump to Fore Peak, Drain Boxes and Tank Tops; Sounding Pipes, Testing of Pumps.

Are the Chambers of the Plunger Pipes Copper? *Semi rotary pumps*

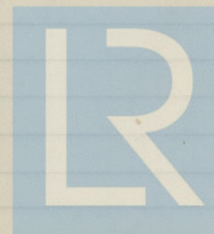
Is a Plate fitted under the Lower End of each Sounding Pipe? *Yes.*

Are Pump Chambers, Tail Pipes, and Rods protected by substantial Casings? *Yes.*

State whether particulars not given are in accordance with approved Plans.

State name of approved Plans and date of approval.

*Pumping arrangement as per  
approved plans: dated 16-9-39.*



© 2020

Lloyd's Register  
Foundation



## CEMENTING AND PAINTING.

State if and where Portland or Bituminous Cement is used and how it is applied.

State particulars and Composition of Cement, Cement Wash, Paint, or Bitumen, in Tanks and elsewhere.

Double Bottom internally: cylinder oil  
 Tanktop: tar with sprayed cement  
 Forepeak: cylinder oil  
 Afterpeak: cement wash  
 Freshwater tank: cement wash  
 Forepeak tanktop: tar with sprayed cement  
 Afterpeak tanktop: tar with sprayed cement.  
 Hold: oil paint 2x.  
 Shell: bottom tar 2x  
           sides Oil paint 2x  
 Deck: Black varnish.  
 Beamings, deckhouses,  
 bulwark etc.: Oil paint 2x

## MASTS, SPARS, AND RIGGING.

**Steam Vessels.**—State particulars, which do not appear on reference Plans, as to Heights, Diameters, and

Scantlings of Masts; Derrick Loads and Outreaches; Scantlings and arrangements of Derrick Tables and Outriggers.

**Sailing Vessels.**—The same particulars as for Steam Vessels, where applicable, also particulars of Rigging, details of Canvas and Sail Area.

State whether particulars not given are in accordance with approved Plans.

State name of approved Plans and date of approval.

One mast, height above deck 11.55 M.  
 hinged.  $\Phi$  457/10 mm -  $\Phi$  160/7 mm.  
 Two derricks for 5 ton each long  
 10.35 M and  $\Phi$  241/5 mm.

The loading and discharging gear have  
 been tested by the Dutch Harbour  
 Inspection in accordance with  
 the requirements.



© 2020

Lloyd's Register  
 Foundation



State Equipment Numbers and corresponding Letter for Register Book.

**Chain Cables, Stream Chains, Wires, &c.**—State particulars of number of Certificates, where and when Tested, Length, Size, Weight, and Maker's Name.

**Anchor.**—State number of Certificates, where and when Tested, Weight of Head Shank and Stock, and Maker's Name and Type of Anchor.

**Steering Gear.**—Plans or Sketches showing arrangement and details of Steering Gear, including Auxiliary Gear, to be given, to include Diameter of Chains and Rods; Diameter and Scantlings of Quadrant; Diameter, Scantlings and Attachments of Quarter and Leading Blocks, Buffer Springs and Stretching Screws; Type and Make of Steering Gear and Control; Particulars of Relieving Tackle, Brakes, &c.; Particulars of Test Certificates for Chains, Rods, Stretching Screws, Buffer Springs, Spare Links, Shackles, &c.; state Spares provided; Particulars of Trials.

**Windlass and Capstan.**—State particulars of Type and Maker's Name and if satisfactory under trial.

**Winches.**—State Number, Size, and Type fitted.

**Lifeboats.**—Number and Dimensions.

C. 16.

No. of certificate 391.  
 Tested at N.V. Anker in Luttingfabriek "Schiedam"  
 Total length of chain 11 x 15 fathoms  
 Size of chain 1"  
 Weight of chain 4260 kg.  
 No. of shackles 11 joining 4 end.  
 Length of link 16" Breadth of ditto 3 7/16"  
 Tensile strain applied 18 tons  
 Breaking strain applied to 3 links cut out  
 of every 15 fathoms 27 tons  
 Marks: B.C. Test A.K.S. 9-1-40 J.A.  
 Maker's Name: N.V. Anker-Luttingfabriek "Schiedam"

Wires according Rules, and delivered  
 with certificate of makers.

No. of certificate	332	333	334	335
Tested at	Schiedam	Schiedam	Schiedam	Schiedam
Weight of anchor (cast)	464 kg.	465 kg.	166 kg.	81 kg.
Weight of iron stock	—	—	41 kg.	20 kg.
Length of shank	3'-9 1/2"	3'-10"	5'-1 1/2"	4'-3"
Length of arm	2'-5 1/2"	2'-5 1/2"	2'-4 1/2"	1'-9 1/2"
Diam. of shank	4 1/2" x 3 7/8"	4 3/4" x 3 7/8"	3 13/16 x 2 5/8"	3" x 2 1/8"
Description	Half type	Half type	Stock shank	Stock shank
Proof strain applied	11.9 tons	11.9 tons	5.8 tons	3.9 tons
Makers name	N.V. Anker	N.V. Anker	Luttingfabriek	Schiedam
Marks	B.C. Test A.K.S.	9-1-40 J.A.	—	B.C. Test A.K.S. 9-1-40 J.A.
Anchor head marked	Cast steel	Cast steel	—	—
	8' 318 kg.	8' 319 kg.	—	—
	No. 26 8.3-39	No. 25 8.3-39	—	—
	C.V.	C.V.	—	—



## EQUIPMENT—Continued.

Steering gear: Hakey Bodewes Torchol.  
English patent hand steering gear  
from wheelhouse to Quadrant  
by 2" steering rod and Galt  
chain.

Emergency tackle has been  
provided.

Windlass: Hakey Bodewes Torchol for  
1" chain cable, driven by  
8 H.P. lister motor. Tried  
on trial trip and found in  
order.

Capstan Hand capstan made by  
Bodewes Torchol

Winches 2, 3 tons (5 ton) winches made  
by Bodewes Torchol and driven  
by 7-8 H.P. lister motor.

Lifboats 5B and 5S one  
4.83 x 1.75 x 0.74 13 Pers.  
4.82 x 1.78 x 0.73 13 pers.  
both with copper awnings  
and approved by Dutch  
Shipping inspection

## DEEP TANKS, OIL TANKS, AND OIL BUNKERS.

State particulars, which do not appear on reference Plans, of Position and Arrangement; Scantlings of  
Plating, Stiffeners, Deck Girders, Wash Bulkheads and Plates; Top Plating; Frame Connections; Means  
to prevent Overloading; Height of Filling, Air and Sounding Pipes; in the case of **Oil Tanks**, give  
Density and Flash Points of Oils; Arrangements of Expansion Trunks, Cofferdams, and details of  
Ventilation; state Particulars of Packing used.

State Arrangements of Pump Rooms, means of keeping Low Flash Point Oil separate from other Oil, and  
provisions made where Low Flash Point Oils are used for Oil Fuel.

State whether particulars not given are in accordance with approved Plans.

State name of approved Plans and date of approval.

As per approved Construction  
plan 8<sup>th</sup> May 1939.



© 2020

Lloyd's Register  
Foundation



DEEP TANKS, OIL TANKS, AND OIL BUNKERS—Continued.

© 2020

Lloyd's Register  
Foundation



## DEEP TANKS, OIL TANKS, AND OIL BUNKERS—Continued.

No.	1 Tank, Port, Tested and found satisfactory.	Test Head Deflection Deflection			Date.	Initials.
		above Top of Tank.	at Full Tank.	with Test Head.		
	" Starb'd, "	"	"	"		
2	" Port, "	"	"	"		
	" Starb'd, "	"	"	"		
3	" Port, "	"	"	"		
	" Starb'd, "	"	"	"		
4	" Port, "	"	"	"		
	" Starb'd, "	"	"	"		
5	" Port, "	"	"	"		
	" Starb'd, "	"	"	"		
6	" Port, "	"	"	"		
	" Starb'd, "	"	"	"		
7	" Port, "	"	"	"		
	" Starb'd, "	"	"	"		
8	" Port, "	"	"	"		
	" Starb'd, "	"	"	"		
9	" Port, "	"	"	"		
	" Starb'd, "	"	"	"		
10	" Port, "	"	"	"		
	" Starb'd, "	"	"	"		
11	" Port, "	"	"	"		
	" Starb'd, "	"	"	"		
12	" Port, "	"	"	"		
	" Starb'd, "	"	"	"		

MD to Surfdeck. 14-12-39 MD

## DEEP TANKS, OIL TANKS, AND OIL BUNKERS—Continued.

State which Tanks are used as Oil Fuel Bunkers.

Give position and size of Air Pipes or Ventilators from each Tank.



© 2020

Lloyd's Register  
Foundation



## SURVEYORS' NOTES.

Give dates of visits also notes of any occurrence of which a record should be kept.

- 22-6-39 S. Discussed items in connection  
letter 19-6-39.
- 14-7-39 A Bottom plating laid. P.S. floors 20-55  
erected.
- 22-7-39 A Verified thicknesses and testmarks  
All floors in place.
- 24-7-39 A Stamped testpieces keelplates and  
hanktopplates.
- 27-7-39 S. Tested material keelplates and  
hanktopplates. Sulphur prints made.
- 1-8-39 S. Discussed proposed docking keel  
examined progress of work.
- 15-8-39 S. Awaiting material. Examined  
progress of work.
- 25-8-39 S. Examined work in hand.
- 20-9-39 A Double bottom ready for testing  
Engine floors in girders in place.  
Frames erected 0-20. Aft. bulkhead  
and oil bunker bld. frame erected  
with hankdeck.
- 18-10-39 A Stern frame, frames, side plating,  
motor foundation and lower deck  
all erected up to engineroom bld.
- 14-11-39 A R.Q. deck in place with centre line  
bulkheads, frames up to 56.
- 27-11-39 A Examined progress of work.
- 14-12-39 D Examined drawing in of skentube  
Tested O.F. bunker and A.P. fresh  
watertank.
- 20-12-39 A. Vessel all plated. Decks and  
hatches in place, except f.c. deck.

## SURVEYORS' NOTES—Continued.

- 22-12-39 D Tested afterpeak tank
- 12-2-40 A Luker. Lt. Survey Shellwork all  
completed.
- 26-2-40 A Tested d.b.t. 3 S.B., 1 P.S. and  
forepeak tank.
- 28-2-40 D Tested d.b.t. 3 P.S. and 1 S.B.
- 29-2-40 A " " " " 2 S.B. and 2 P.S.  
separately.
- 4-3-40 D Those tested bulkheads, decks  
and hatchcoamings
- 7-3-40 A Launched.
- 20-3-40 D Main motor in place  
Tested starting air pipes  
and ballast pump.
- 27-3-40 A Trial trip, tried anchor and  
D skerry gear.
- 29-3-40 S. Gathered particulars for hull report  
by book, tested bilge pipeline  
hoisted S. Bld., checked freeboard  
marks.



© 2020

Lloyd's Register  
Foundation







## REFRIGERATION—Continued.

## REFRIGERATION—Continued.



© 2020

Lloyd's Register  
Foundation



## LOAD LINE PARTICULARS WHERE

Registered Length	Breadth	Depth
Length on L.W.L.	Beam at Gunwale Amidships	
Moulded Depth as measured in Ship		
Round of Beam	Rise of Floor	
Sheer at Stem	Sheer at Sternpost	
„ $\frac{1}{8}$ from Stem	„ $\frac{1}{8}$ from Sternpost	
Particulars of Sheer in Decks which are not parallel to Freeboard Deck		
Fall in Sheer	Thickness of Wood Deck	
Extent of Wood Deck	Thickness of Ceiling	
Thickness of Sparring	Depth of Framing	
Drop in Tank Level	Modifications in D.B. affecting Coef. (see Sketch).	
Particulars of Erections (see Sketch)		

Length	Length of Overhang (Recesses, &c.)	Height
Forecastle		
Poop or R.Q.D.		

Bridge

Scantlings of Bulkheads of Erections

Openings in Bulkheads of Erections and Means of Closing same

Are the Engine and Boiler Openings covered by the Poop or R.Q.D. and enclosed by a strong Iron or Steel House?

Give Number, Size, and Area of Freeing Ports in Wells

## NOT STATED ON L.L.4D. FORM.

Displacement in Salt Water	Tons per inch
Tonnage under	Deck

Means of making Freeboard Deck watertight in erections where Frames pass through

Freeboard assigned by the Committee, as per letter issued by Secretary dated

From Top of Statutory Deck Line to Centre of Disc

Fresh Water Line above Centre of Disc

Indian Summer „ „

Winter Line below Centre of Disc

W.N.A. „ „

Statutory Deck Line ins. above Top of Wood/Iron Deck at Side

Freeboard marks verified :—

Freeboard as assigned above subject to :—



© 2020

Lloyd's Register  
Foundation



## LOAD LINE PARTICULARS—Continued.

Elevation and Plan Sketches showing Lengths and Arrangements of Erections, Length, Heights and variations of Double Bottom, Peak Tanks, Protection of Openings in Bulkheads, if not stated on L.L. 4 D. Form.

I we have satisfied myself, ourselves, from personal examination, that this Ship has been built in accordance with the approved Plans and the Rule requirements, or their equivalent, that the materials used in the construction of the Hull and Equipment are in accordance with the Rules, and that the workmanship is in every respect satisfactory.

Rotterdam, 2-4-40.

*J. A. Quinn*  
Surveyor to the British Corporation Register  
of Shipping and Aircraft.

It is submitted that this Report be approved.

*Phoebe King*  
Chief Surveyor.

3 JUL 1940

Approved by the Committee for the Class of *BS\** on the *3<sup>rd</sup> July 1940*

*M. A. C. ...*  
Secretary.



© 2020

Lloyd's Register  
Foundation



## LOAD LINE PARTICULARS—Continued

I have satisfied myself that the vessel is in accordance with the provisions of the Act and the Rules and Regulations in relation to the construction of the hull and the equipment and in accordance with the Rules and that the workmanship is in every respect satisfactory.

Witness my hand and seal this 1st day of July 1930.

*[Signature]*  
 Surveyor in Charge  
 U.S. Customs and Border Protection

It is submitted that this Report be approved.

*[Signature]*  
 Chief Engineer

3 JUL 1930

Approved by the Committee for the Class of *[illegible]* on the 1st day of July 1930.

*[Signature]*  
 Secretary



© 2020

Lloyd's Register  
 Foundation





© 2020

Lloyd's Register  
Foundation





© 2020

Lloyd's Register  
Foundation

McCORMICK & CO.  
GLASSBORO, N.J. 07033