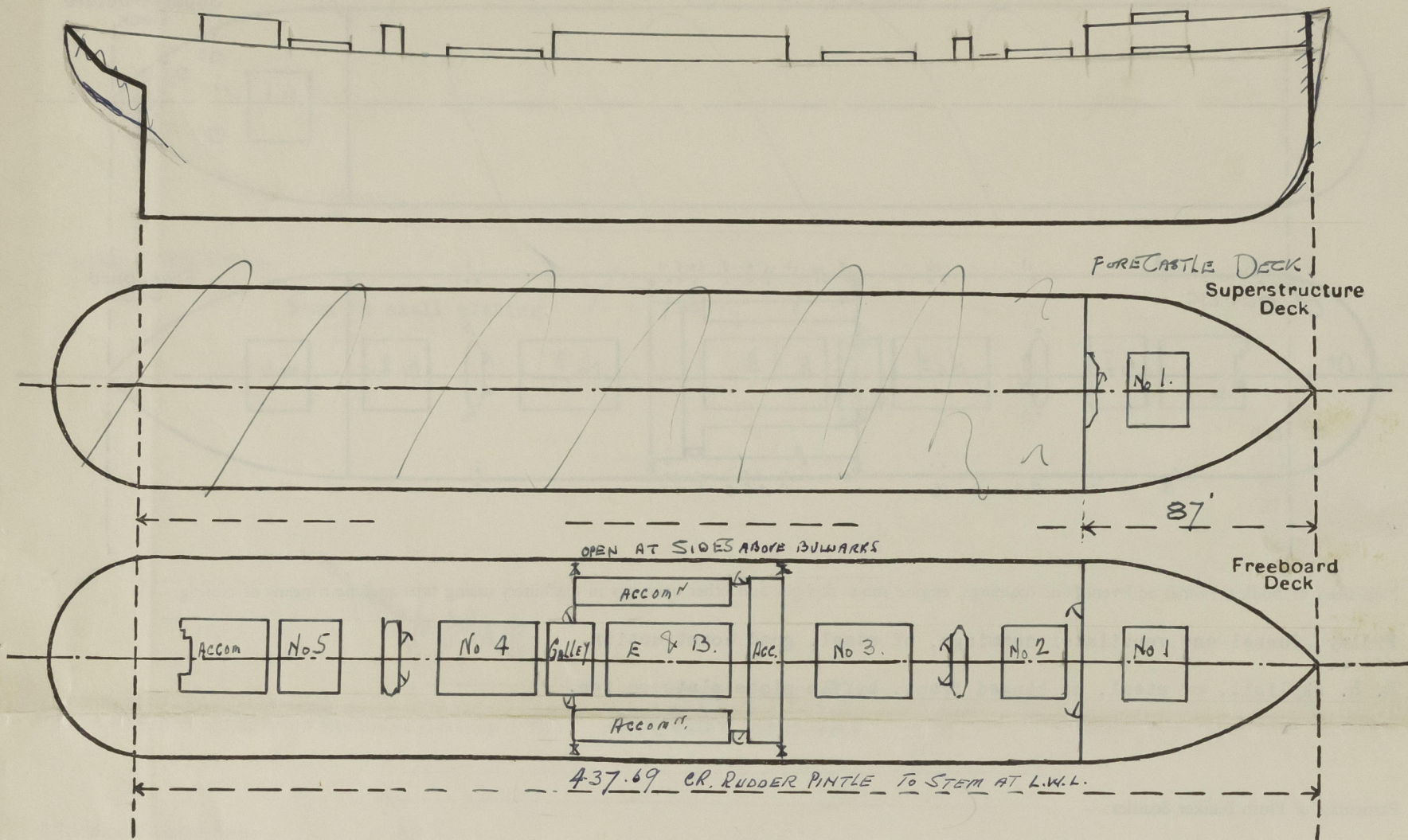


Lloyd's Register of Shipping.  
SURVEYS FOR FREEBOARD.  
(CONDITIONS OF ASSIGNMENT.)

Index No. 39193  
(For London Office only).

Ship's Name S.S. "NIKOBAR" (ex "Rushville Victory") Port of Survey Baltimore, Maryland  
Official Number Surveyor's Signature  
Nationality and Port of Registry Danish - Copenhagen Date of Survey 5th April, 1947, and subsequent dates

Disposition and dimensions of superstructures, trunks, deckhouses and machinery casings to be inserted in the diagrams and tabular statement:—

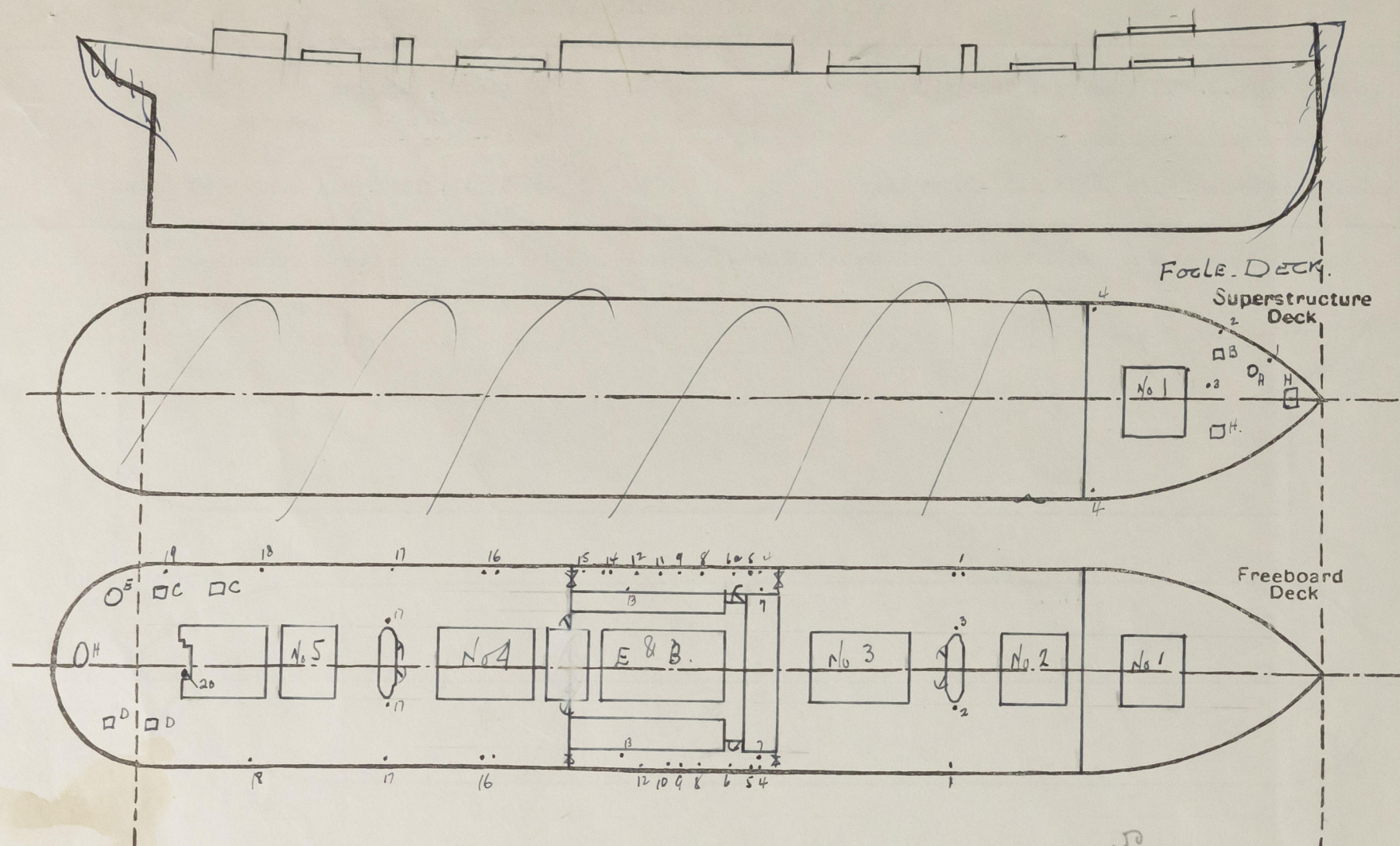


Particulars of Superstructures, Trunks, Casings, Deckhouses.								
	Coaming	Plating	Stiffeners	Spacing	End Attachments of Stiffeners	Size of Openings	Height of Sills	Height of Casings
Poop Bulkhead ...	-							
Raised Quarter Deck Bulkhead ...	-							
Bridge, After Bulkhead ...	-							
Bridge, Forward Bulkhead ...	-							
Forecastle Bulkhead ...	.35	.35	4 x 3 x .31	30"	Nil	1 (p & s) 54 x 24	24"	9'
Trunk, Aft ...	-							
Trunk, Forward ...	-							
Exposed Machinery Casings on Freeboard or Raised Quarter Decks ...	None exposed.							
Exposed Machinery Casings on Superstructure Decks ...	-							
Machinery Casings within Superstructures not fitted with Class I Closing Appliances ...	-		front 8 x 3 x .40 sides 6 x 2 1/2 x .30	30	E. W. Connections Bkt. top Nothing foot	aft end 60 x 26 1 (p & s) 60 x 26	18	7' 6"
Deckhouses on Flush Deck Ships ...	-	.38		36			18	
Particulars of Closing Appliances (state if capable of being manipulated from both sides).								
Poop Bulkhead ...	-							
Raised Quarter Deck Bulkhead ...	-							
Bridge, After Bulkhead ...	-							
Bridge, Forward Bulkhead ...	-							
Forecastle Bulkhead ...	1 (p & s) Hinged steel W. T. door - capable manipulation both sides.							
Exposed Machinery Casings on Freeboard or Raised Quarter Decks ...	-							
Exposed Machinery Casings on Superstructure Decks ...	-							
Machinery Casings within Superstructures not fitted with Class I Closing Appliances ...	-							
Deckhouses on Flush Deck Ships ...	Hinged steel W. T. doors - capable manipulation both sides.							



# PARTICULARS OF PROTECTION TO OPENINGS, ETC.

The following diagrams should be used to indicate the positions of cargo and coaling hatchways, gangway, cargo and coaling ports, ventilators, companionways, etc., which would affect the seaworthiness of the ship:—



Particulars of fiddle, funnel and ventilator coamings, engine room skylight and other openings in machinery casing tops and their means of closing:—

Fidley, funnel and ventilator coamings, of steel, good construction.

E. R. skylight, of steel, no hinged flaps, baffle plate slats on top.

Particulars of Flush Bunker Scuttles:—

None.

Particulars of Companionways:—

Steel houses around masts on focle and upper decks, of good construction, enclosing entrances to holds; openings 54 x 21 - sills 24, closed with hinged steel W. T. doors, manipulated both sides.

Particulars of Ventilators in exposed positions on freeboard and superstructure decks:—

Focle Deck - A - 1(p) - 10" dia. - .36" coaming - 36" high - wood plug and canvas cover.

B - 1(p) - 12" x 14" - .30" coaming - 36" high - Hinged steel flap.

Upper Deck - C - 2(p) - 12" x 9" - .38" coaming - 36" high - Hinged steel flap.

D - 2(s) - 8" x 6" - .30" coaming - 36" high - Hinged steel flap.

E - 1(p) - 20" dia. - .36" coaming - 36" high - Permanent top with patent arrangement for excluding water.

Particulars of Air Pipes in exposed positions on freeboard, raised quarter, or superstructure decks:—

Focle - 1 - 1 (p) - 2" dia.  
2 - 2(p&s) - 2 1/2" dia.  
3 - 1 (p) - 6" dia.  
4 - 1(p&s) - 3 1/2" dia.  
Upper - 1 - 2P & 1S - 3" dia.  
2 - 1 (s) - 4" dia.  
3 - 1 (p) - 3" dia.  
4 - 1(p&s) - 3 1/2" dia.  
5 - 1(p&s) - 2" dia.  
6 - 1 (s) - 2 1/2" dia.  
6a - 1 (p) - 3 1/2" dia.  
7 - 1(p&s) - 3" dia.

8 - 1(p&s) - 2 1/2" dia.  
9 - 1(p&s) - 2" dia.  
10 - 1 (s) - 3 1/2" dia.  
11 - 1 (p) - 2 1/2" dia.  
12 - 1(p&s) - 2 1/2" dia.  
13 - 1(p&s) - 2 1/2" dia.  
14 - 2 (p) - 2 1/2" dia.  
15 - 1 (p) - 3 1/2" dia.  
16 - 2(p&s) - 2 1/2" dia.  
17 - 2(p&s) - 3" dia.  
18 - 1(p&s) - 3" dia.  
19 - 1 (p) - 2" dia.  
20 - 1 Cr. - 6" dia.

All air pipes 36" high  
with hinged metal flaps  
on ball float valves.

Particulars of Gangway Cargo and Coaling Ports:—

None.

*Nikobar.*

Particulars of Scuppers and Sanitary Discharge Pipes:—

All from spaces above freeboard deck, openings on ship's sides have storm valves of good construction.

Particulars of Side Scuttles:—

None in shell plating.

Vertical distance of Sill of lowest Side Scuttle above top of keel. None below upper deck.

Particulars of Guard Rails:—

On Focle Deck - 3 tier chains, 43" high, stanchions 5' apart *fixed with stretching screws.*

On Upper Deck - 3 tier rails, 42" high, stanchions 8' apart  
for 45' (p & s) at stern only.

Particulars of Gangways, Lifelines, etc:—

Provision for fitting lifelines.

## Particulars of Freeing Arrangements.

	Length of Bulwark	Height of Bulwark	Size of Freeing Ports	Number each side	Area each side	Rule area each side
After Well ... ..	All fore and aft except	43"	Continuous 6" slot from frame 45 to frame 140			61.28 <i>ft</i>
Forward Well ... ..	45' (p & s) at stern					<i>for</i> 76.

State position of each freeing port ... .. { After Well:—  
(F. and A. position and height above deck edge) { Forward Well:— 8" ✓

State whether the freeing ports are fitted with shutters, bars, or rails, and give particulars of such:— Nothing. ✓

Additional area where sheer is less than standard.



PARTICULARS OF PROTECTION TO OPENINGS, ETC.

HATCHWAYS ON FREEBOARD AND SUPERSTRUCTURE DECKS.															
		Focle Dk.					Upper Deck					Focle Dk.		Upper Dk.	
Description of Hatchway		No. 1	No. 2	No. 3	No. 4	No. 5		To Fore Pk.	To Paint Locker	To Store					
Dimensions of Hatchway		25'x22'4"	24x22-4	36x22-4	36x22-4	24x22-4		3' x 3'	3' x 3'	oval 24 x 17					
COAMINGS	Height above Deck	40"						18	18	15					
	Thickness { Sides	.44						.38	.38	.38					
	Ends	.44						.38	.38	.38					
	Stiffeners	10x3 1/2 BA						-	-	-					
	Brackets, Stays	stays about 8' apart						-	-	-					
HATCH BEAMS	Number				7	5		-	-	-					
	Spacing				4' 6"	5@ 4' 6"		-	-	-					
	Scantling and Sketch				7x.62	1@ 1' 6"		-	-	-					
		None	None	None	27x.38	27x.38		-	-	-					
	Bearing Surface				7x.62	7x.62		-	-	-					
					3	3		-	-	-					
FORE AND AFTERS	Number														
	Spacing														
	Unsupported Lengths														
	Scantling and Sketch														
	Bearing Surface														
HATCH COVERS	Material	steel pontoon covers			wood	wood		steel							
	Thickness	10 1/2			2 1/2	2 1/2		.30							
	How fitted	athwartships			r & a	r & a		hinged							
	Bearing Surface	4 1/2			3	3		W. T.							
Spacing of Cleats		24"						6							
Number of Tarpaulins		3"						toggles							
<p>*Are wood fore and afters steel shod at all bearing surfaces? -</p> <p>Are battens and wedges efficient and in good condition? Yes</p> <p>Are tarpaulins in good condition and in accordance with rule requirements? Yes</p> <p>Are lashings provided in accordance with rule requirements? Yes</p> <p>Locking bars fitted on all cargo hatchways.</p> <p>Wood covers have metal bands at ends.</p>															

Particulars of any special features:—

Endorsement at first survey and at surveys for renewal of Certificate:—

The fittings and appliances are in accordance with the particulars shown on this form (or as now modified) and are in good condition.



© 2020

Lloyd's Register  
Foundation