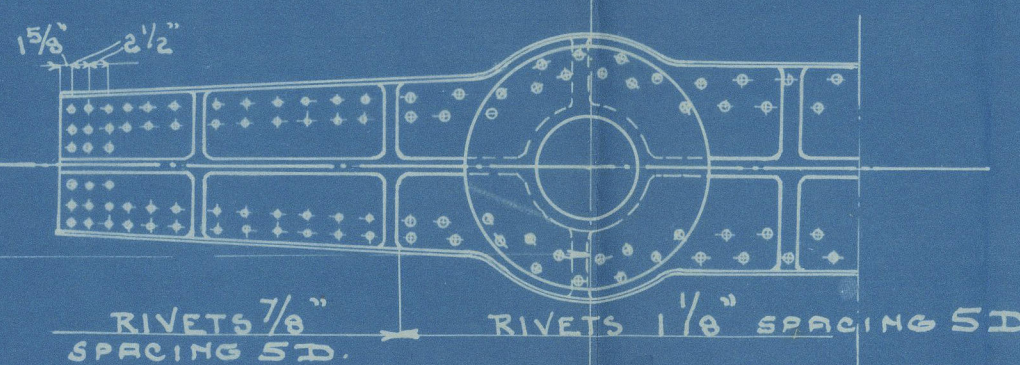


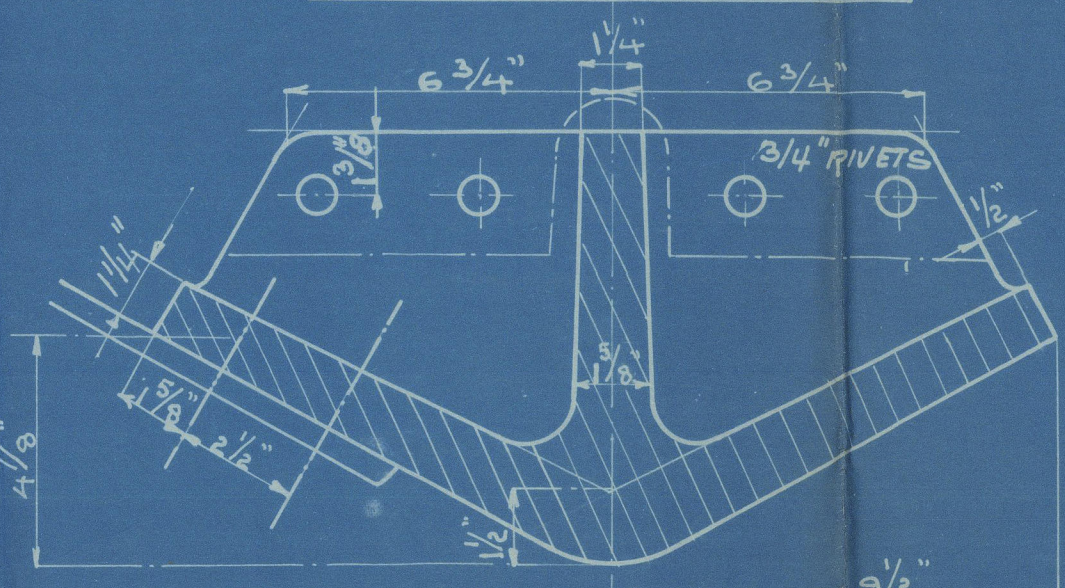
TOPVIEW OF STERN FRAME.



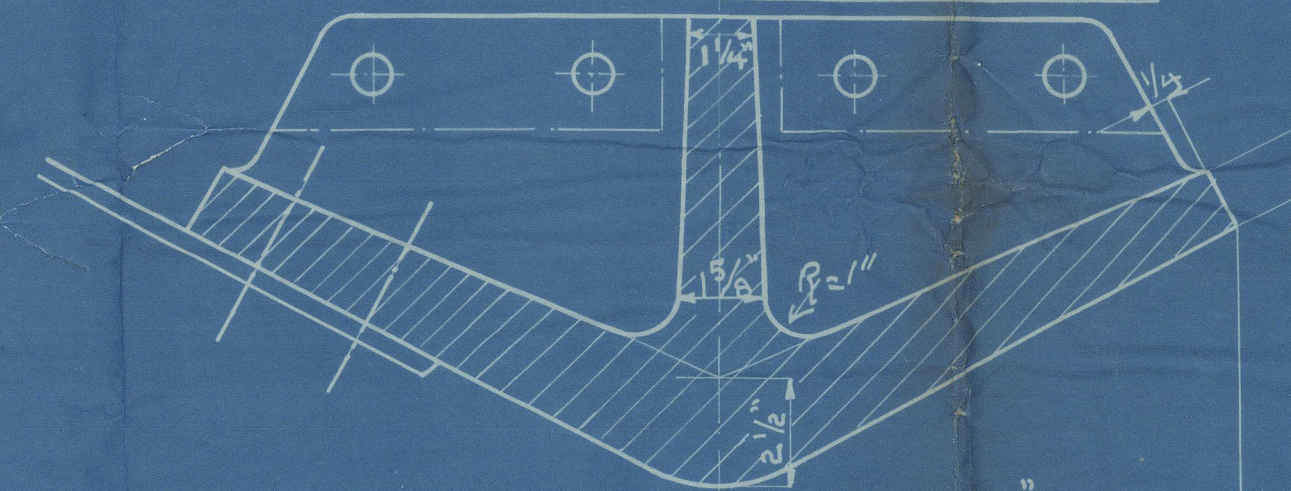
STERNFRAME

MATERIAL: CAST STEEL.
SPEED OF VESSEL 11 1/4 KNOTS
RUDDER ANGLE 40°

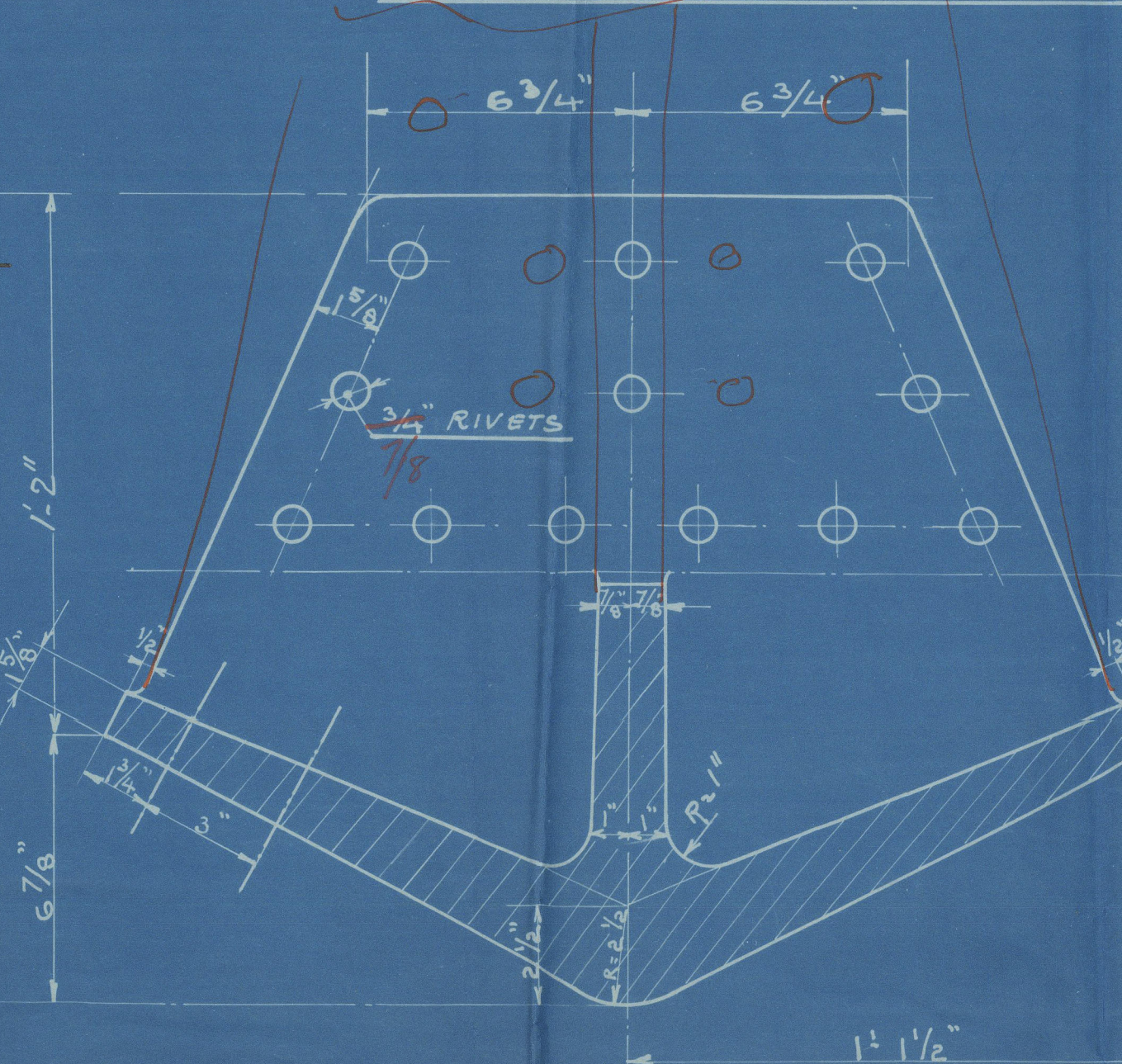
SECTION AT FRAME B.



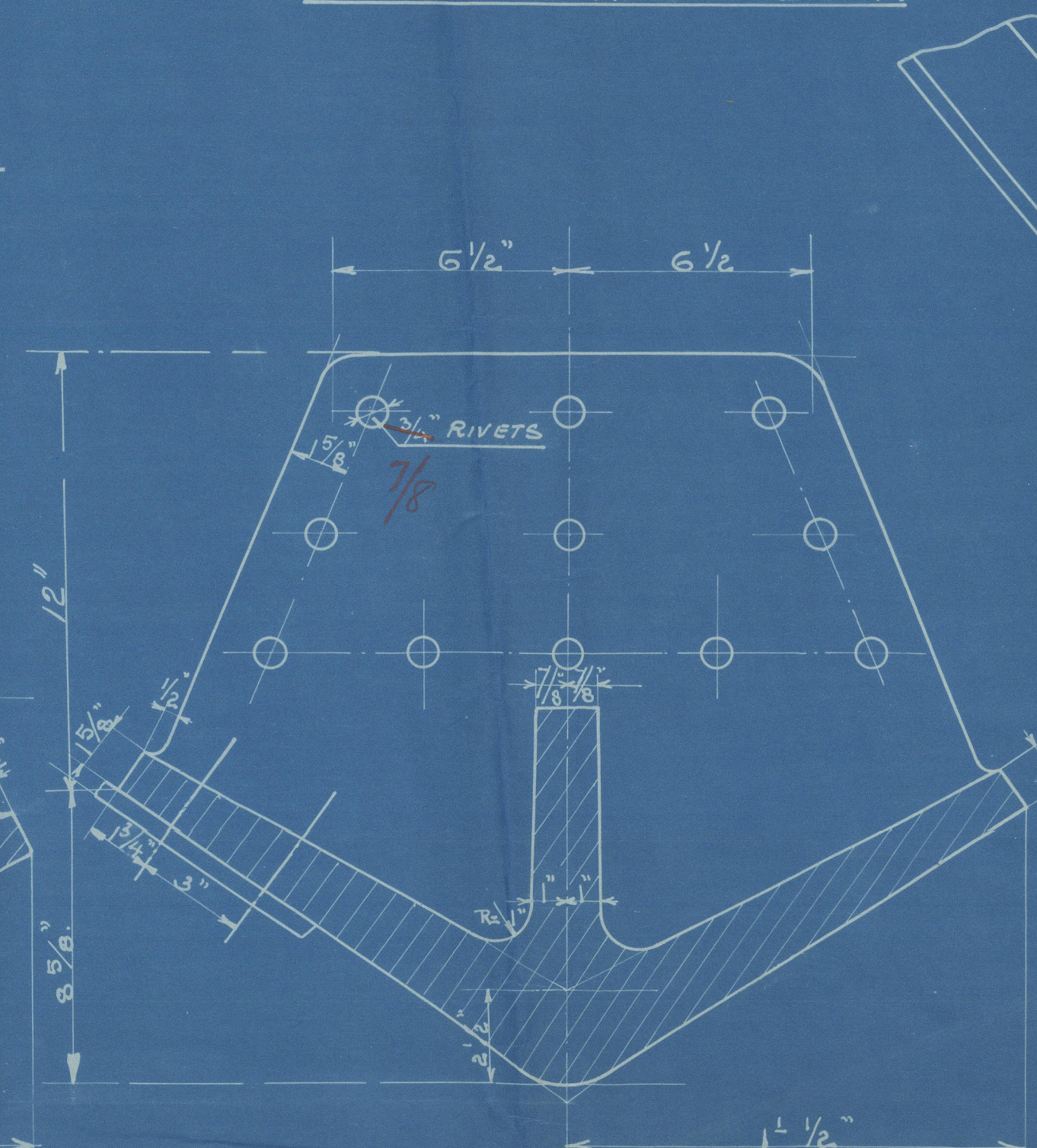
SECTION AT FRAME A 1:4.



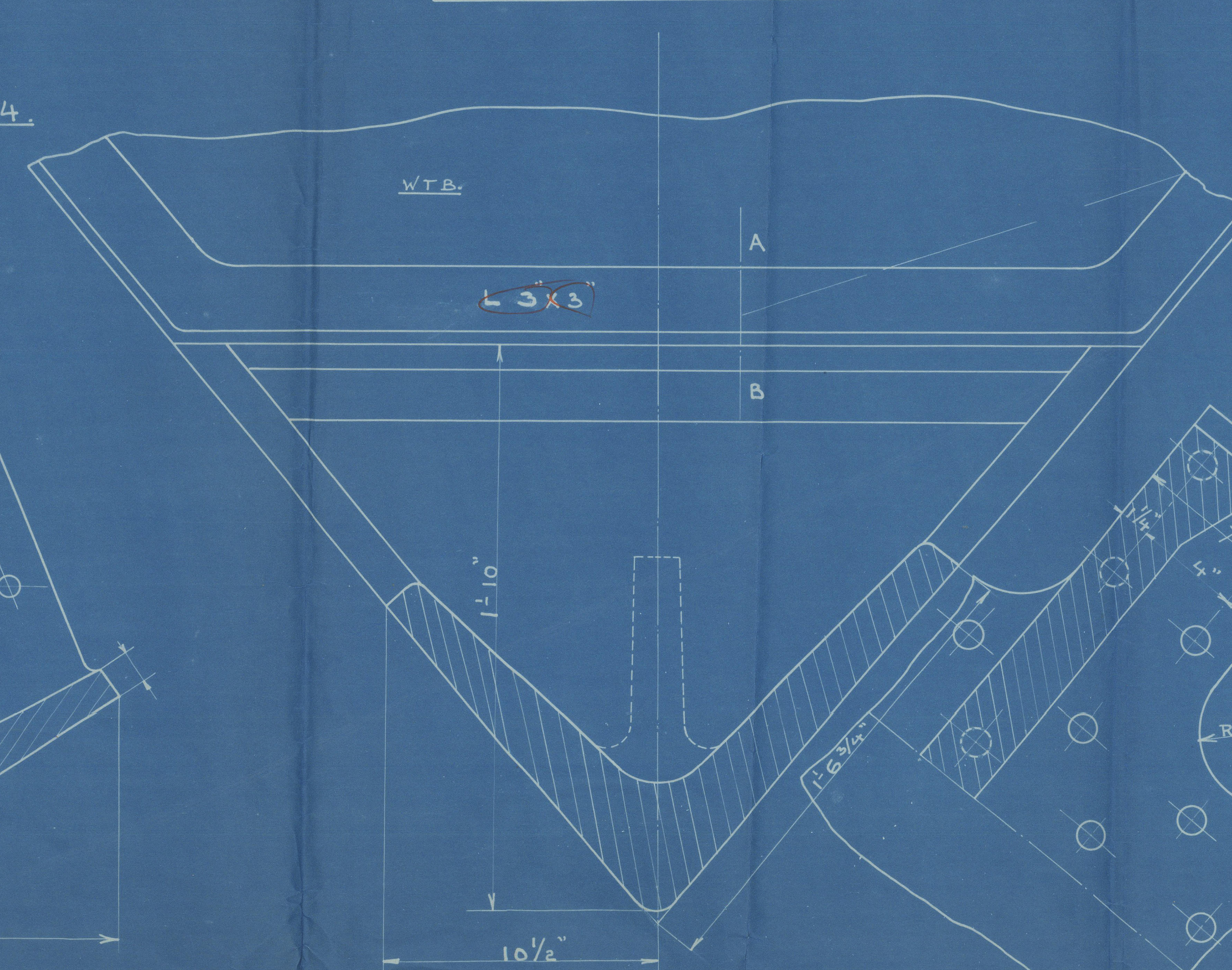
SECTION AT FRAME 1. 1:4.



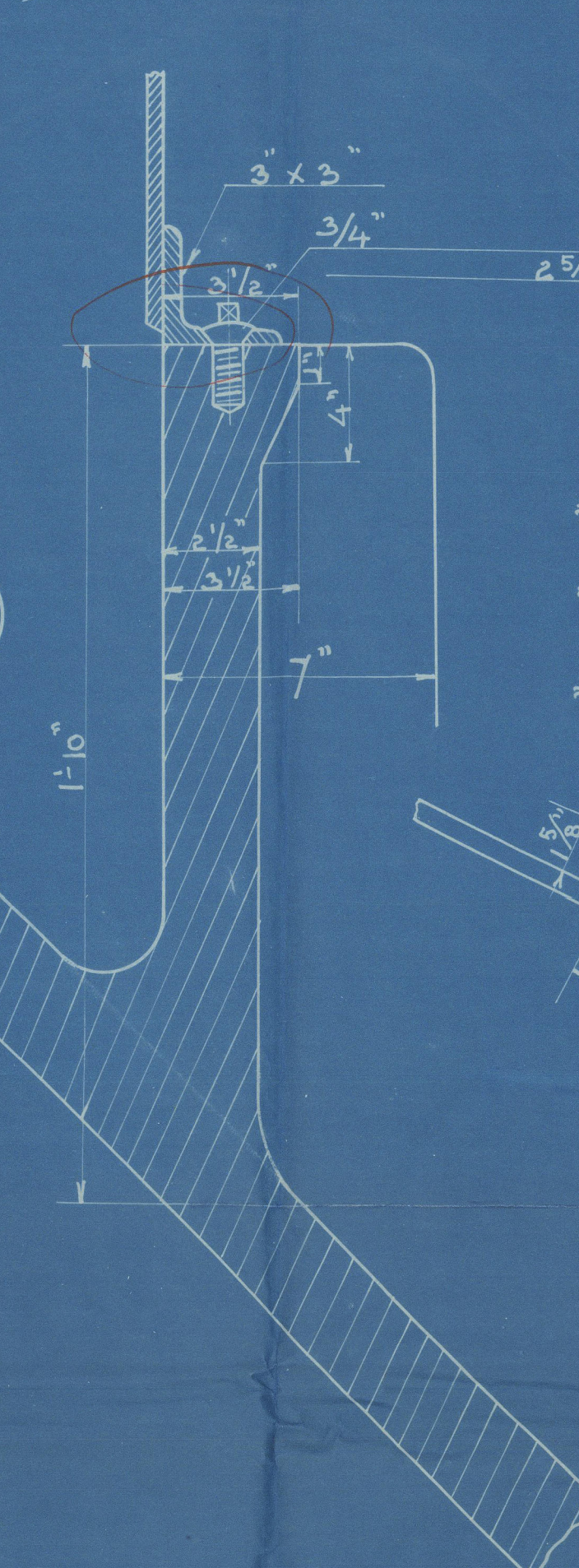
SECTION AT FRAME N° 2. 1:4.



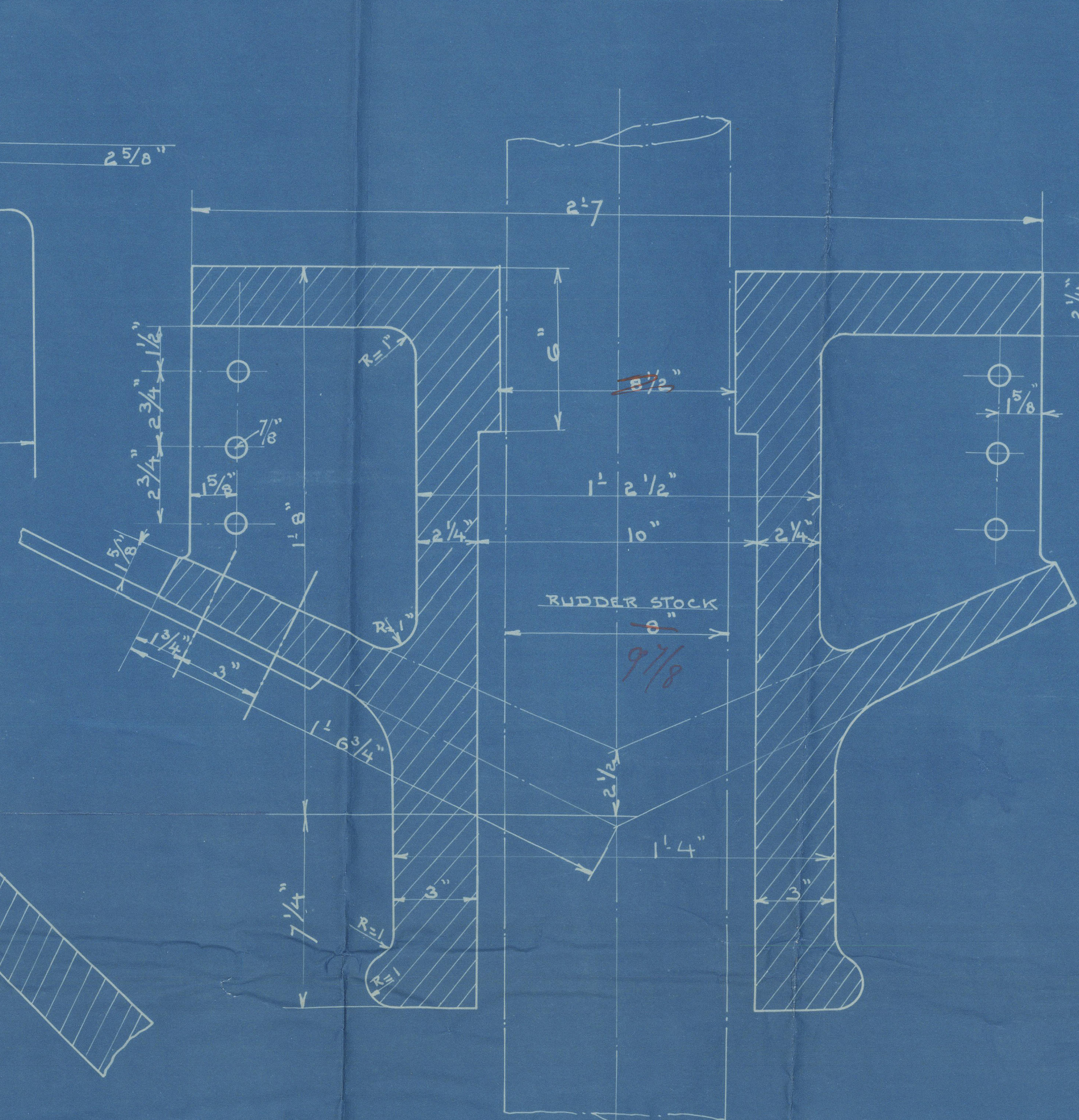
SECTION AT FRAME N° 3.



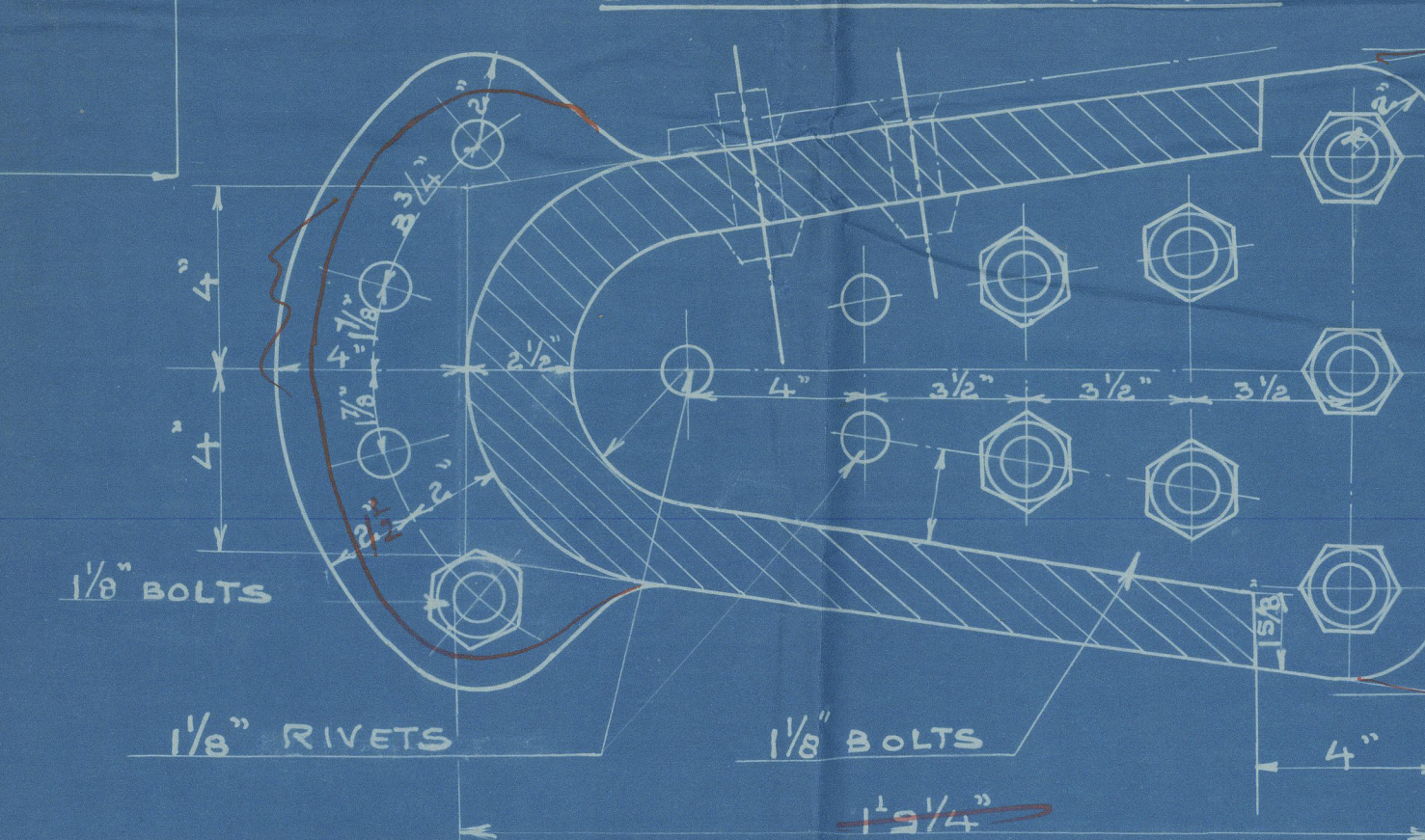
SECTION A-B.



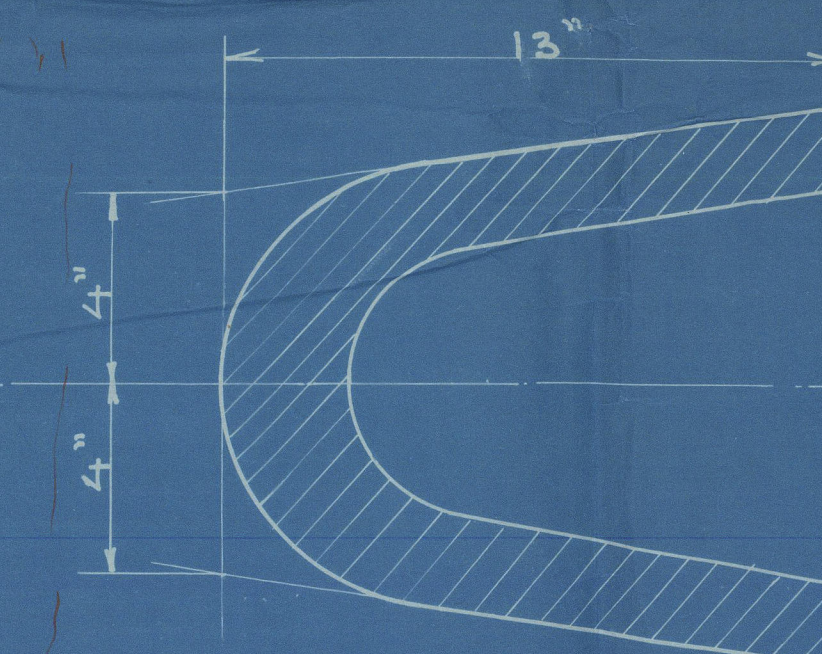
SECTION AT FRAME O.



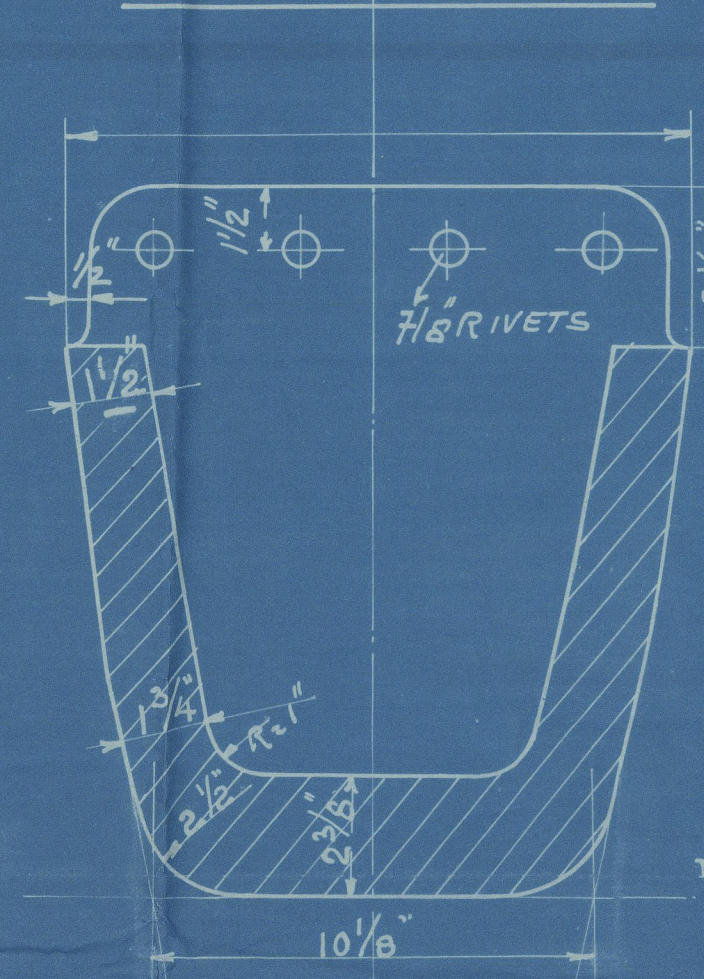
SECTION AT SCARPH. 1:4.



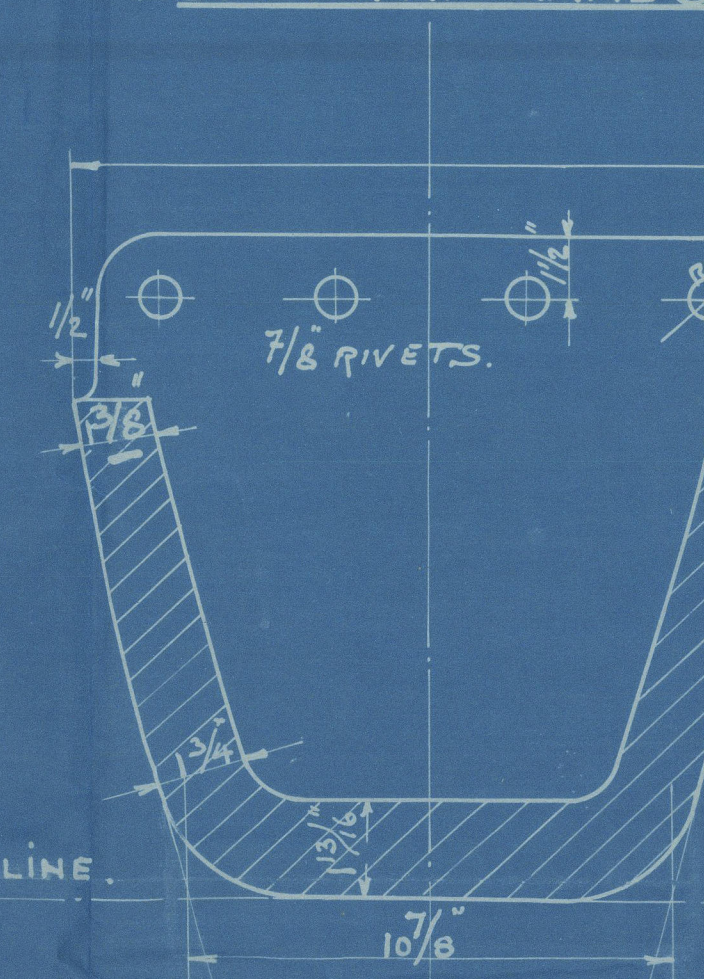
SECTION E.



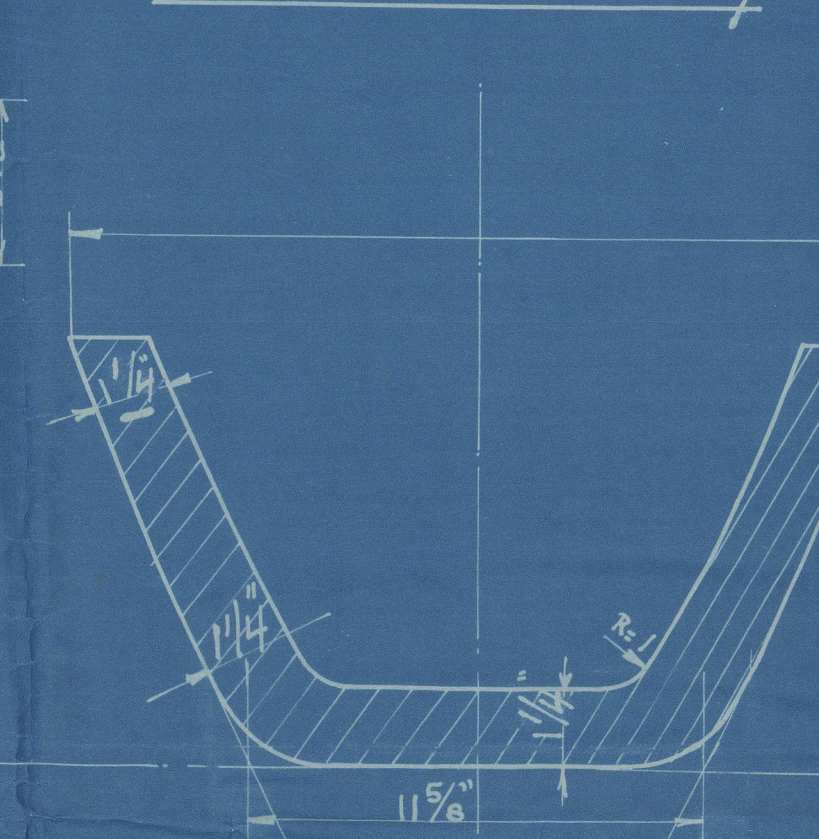
SECTION AT FRAME 5.



SECTION AT FRAME 6.



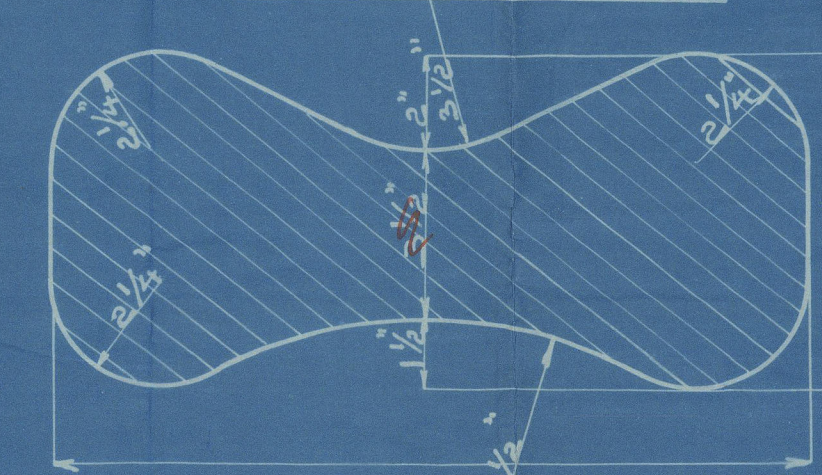
SECTION AT FRAME 7.



backings to be made
of steel as required
by the Rules



SECTION A-B 1:4.



Machinefabriek & Schepswaarf van P. Sijlt Jr. ROTTERDAM. - J.D. SCHREURSPOUW.			
H. No.	Tek. No.	Vak No.	Afd. No.
410	7	600	1000
STERNFRAME			
SCALE 1/8" = 1'-0" AND 3/8" = 1'-0"			

Messrs P. Smit Jr

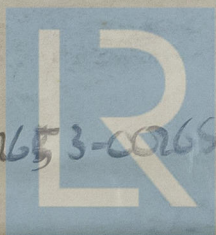
Yrs No 410

Seinframe.

S.S. "COTTICA"

ROTT. 16755.

GEN. BOX NO 704



© 2020

00653-00698-0135

Lloyd's Register
Foundation