

MIDSHIP SECTION

N^o 503

SCALE 1/2" = 1 FOOT.

DIMENSIONS 442'-0" x 55'-0" MLD. x 31'-0" MLD TO SHELTER DECK
TO CLASS 100 A1 AT LLOYDS SHELTER DECK.

NUMBERS.

BREADTH MOULDED 55.00 ✓
DEPTH 30.00 ✓
LENGTH 442'-0" 442.00 ✓
TRANSVERSE N^o 375.70 ✓
LONGITUDINAL N^o

b TO SHELTER DECK = 11.63 ✓
d = 14'-0" ✓
d for frame = 14'

FRAMES-

5'-0" x 2'-0" SPACED 20 1/2" APART.
IN PEAKS 8'-0" x 3'-0" B.A. SPACED 24" APART.
FRAMES TO EXTEND TO SHELTER DECK AND UPPER DECK ALTERNATELY CLEAR OF FOCLE DECK.
FRAMES TO UPPER DECK AND FOCLE DECK ALTERNATELY IN WAY OF FOCLE DECK AND IN WAY
OF FORE PEAK TO EXTEND TO FOCLE DECK THROUGHOUT. In way of after peak to extend to upper & shelter deck alternately.
INTERMEDIATE FRAMES 3'-0" x 3'-0" B.A. SPACED 24" APART. In way of after peak to extend to upper & shelter deck alternately.
IN WAY OF FOCLE 6'-0" x 3'-0" B.A. SPACED 24" APART. SCARPED TO FRAMES BELOW.
No intermediate frames amidships.

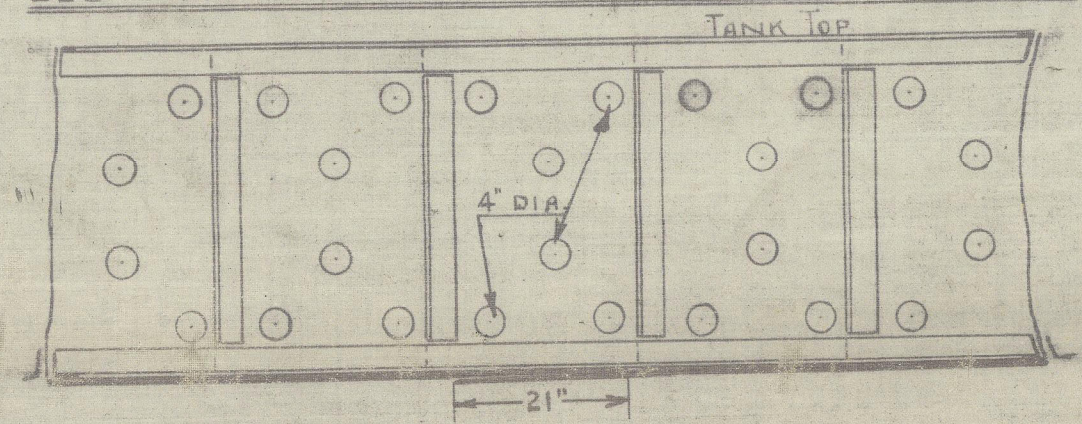
DOUBLE BOTTOM:-

3'-0" x 3'-0" B.A. FOR 1/2 LENGTH TO 42' AT ENDS.
DOUBLED FROM 1/2 LENGTH FORD TO COLLISION BULKHEAD.
REVERSE FRAMES 3'-0" x 3'-0" B.A. FOR 1/2 LENGTH TO 42' AT ENDS.
DOUBLE IN ENGINE ROOM TO GIRDER OUTSIDE ENGINE SEAT 5'-0" x 5'-0" B.A.
3'-0" x 3'-0" B.A. IN BOILER SPACE DOUBLE UNDER BOILER BEARERS.
FLOOR PLATES 42' FOR 1/2 LENGTH TO 36' AT ENDS. 52' IN BOILER SPACE. 1/2" IN ENG. SPACE. PER OWNERS REGS.
SOLID FLOORS AT EVERY THIRD FRAMES.
EVERY FRAME IN ENGINE SPACE AND FOR 1/2 LENGTH
UNDER BOILER BEARERS, BULKHEAD STIFFENER BRACKETS & BULKHEADS.
PARTIAL SOLID FLOORS UNDER THRUST.
FLOOR TAILS 42' FOR 1/2 LENGTH TO 36' AT ENDS. 52' IN BOILER SPACE. 1/2" IN B.S. PER OWNERS REGS.
INTERCOSTALS 4" FOR 1/2 LENGTH TO 36' AT ENDS. FLANGED TO TANK TOP FLOORS AND
NOT TO BE FLANGED FOR 1/2 LENGTH AT FORE END.
INTERCOSTALS IN ENGINE ROOM 4" NOT FLANGED.
INTERCOSTALS IN BOILER 5"
INTERCOSTAL ANGLES TOP ANGLE IN ENGINE ROOM 3'-0" x 3'-0" B.A.
BOILER 3'-0" x 3'-0" B.A.
VERT 3'-0" x 3'-0" B.A.
ENGINE 3'-0" x 3'-0" B.A.
BOILER 3'-0" x 3'-0" B.A.
INTERCOSTAL SHELL ANGLE 3'-0" x 3'-0" B.A. FOR 1/2 LENGTH TO 42' AT ENDS.
FLOORS FORMING DIVISIONS BETWEEN TANKS TO BE INCREASED BY 1/4" OVER RULE. PER OWNERS REGS.

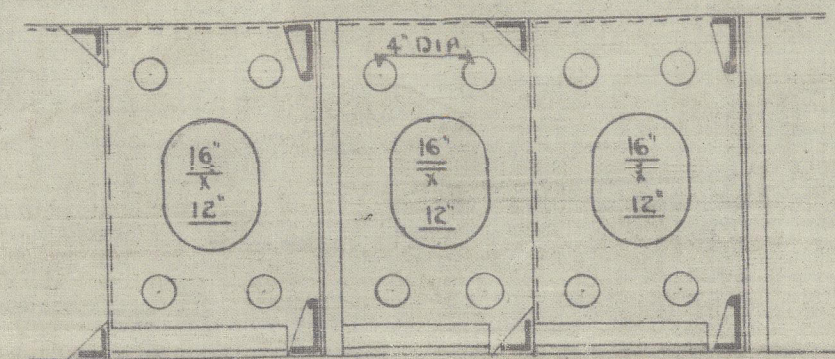
RUDDER POST 9'-0" x 8'-0" ✓
PROPELLER " 10'-0" x 8'-0" ✓

BULKHEADS AS PER PROFILE.
STEM 10'-0" x 2'-0" ✓
RUDDER AS PER RULE.
RIVETS TO BE OF IRON

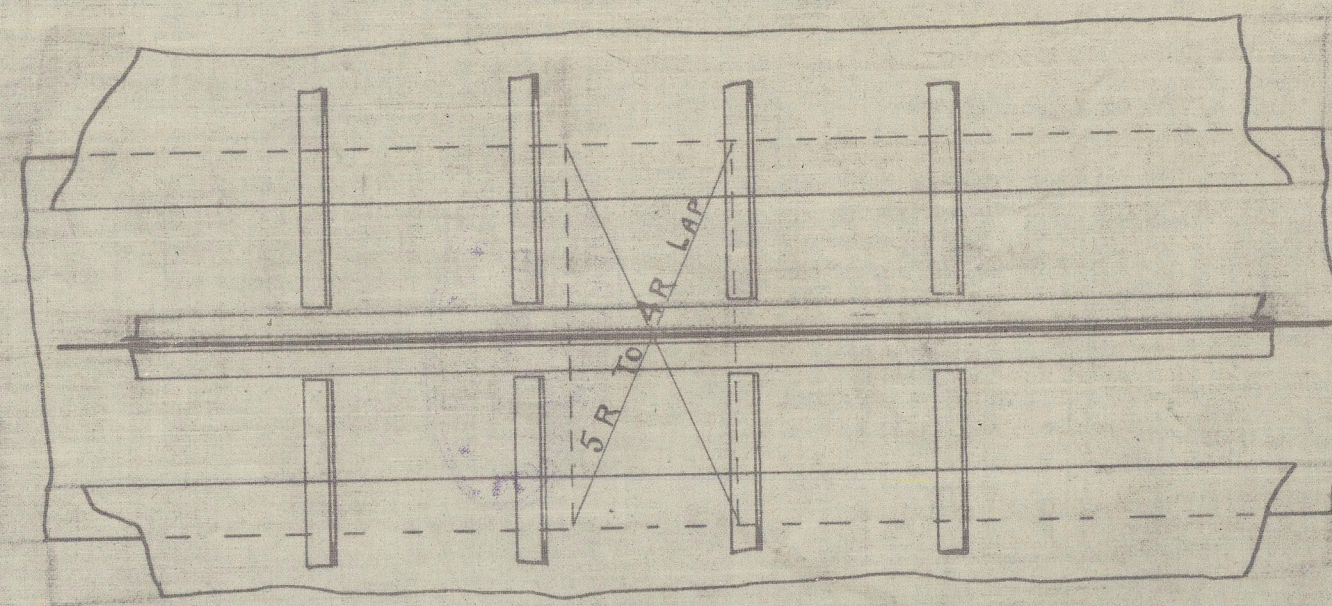
ELEVATION OF CR. GIRDER WHERE NON WT.



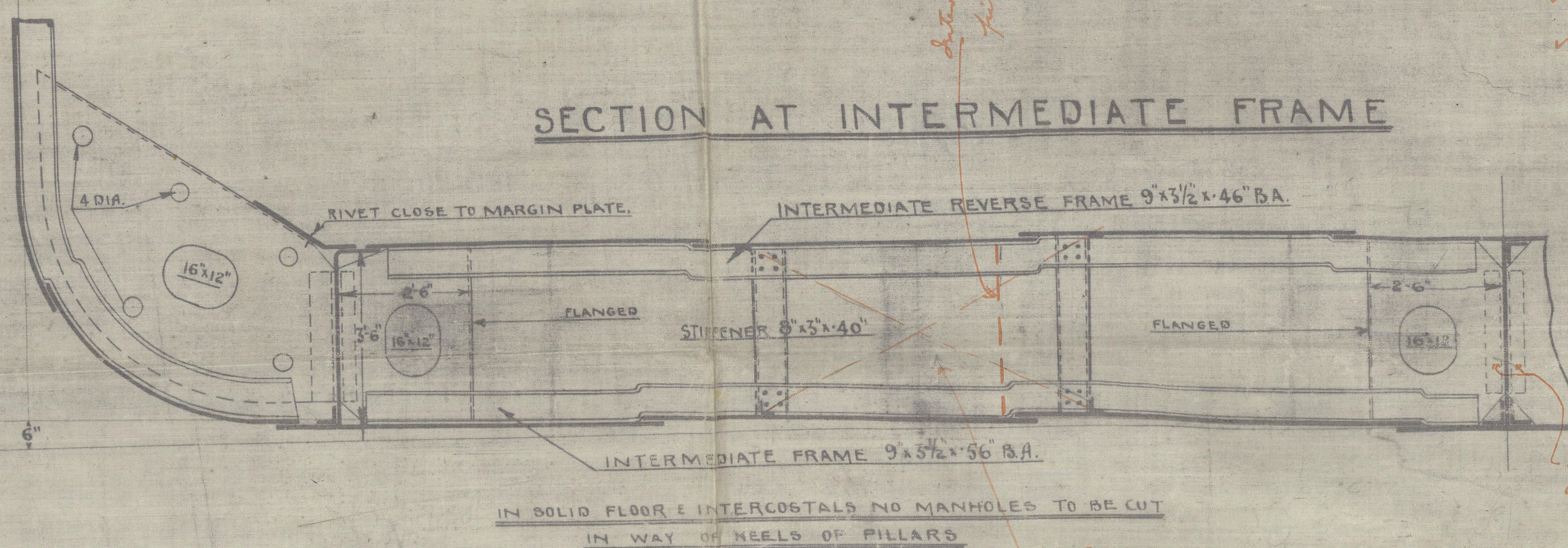
ELEVATION OF TANK INTERCOSTAL



PLAN OF KEEL PLATE OVERLAPS.



SECTION AT INTERMEDIATE FRAME

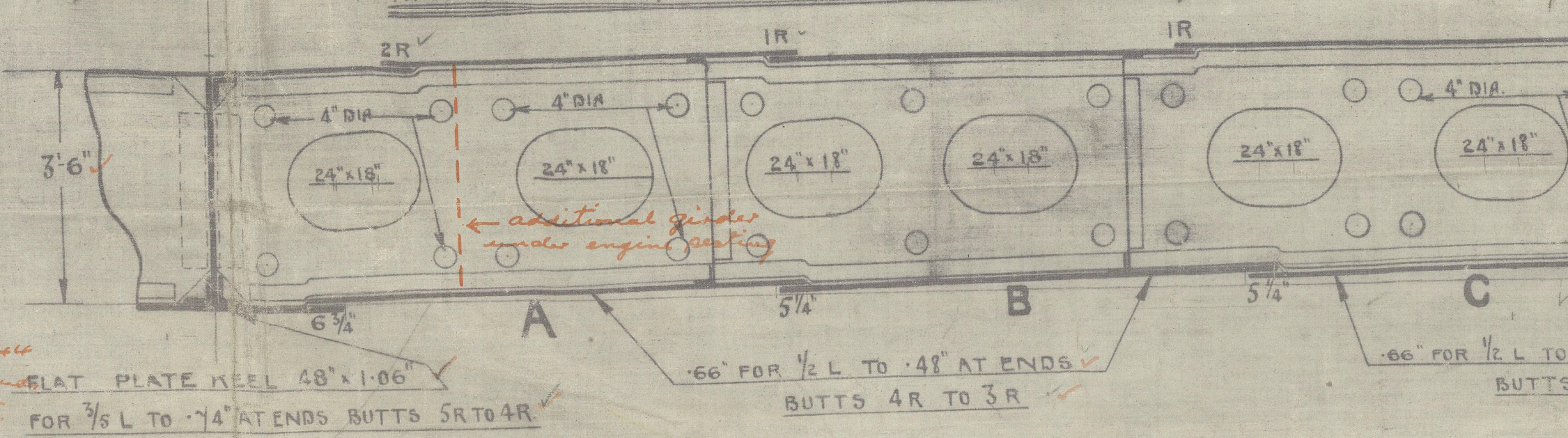


IN SOLID FLOOR & INTERCOSTALS NO MANHOLES TO BE CUT
IN WAY OF KEELS OR PILLARS

Partial flow and
diverted as shown
under pillars.

CR. GIRDER 42' x 54' FOR 1/2 L. TO 44' AT ENDS. 62' IN B.S. 72' IN B.S. PER OWNERS REGS.
BOTTOM ANGLES 4'-0" x 6'-0" DOUBLE TO 44' AT ENDS.
TOP ANGLE SINGLE 4'-0" x 6'-0" FOR 1/2 L. TO 44' AT ENDS. 70' IN B.S.
CR. GIRDER TOP ANGLE DOUBLE 3'-0" x 3'-0" B.A. IN ENGINE ROOM.
CR. GIRDER VERT. ANGLE SINGLE 3'-0" x 3'-0" B.A. FOR 1/2 LENGTH TO 42' AT ENDS. 52' IN B.S. PER OWNERS REGS.
TANK TOP CR STRAKE 3'-0" x 3'-0" B.A. FOR 1/2 L. TO 42' AT ENDS.
TANK TOP PLATING 4" FOR 1/2 L. TO 36' IN ENGINE SPACE. 5" IN B.S. PER OWNERS REGS.
TANK TOP PLATING INCREASED 1/8" IN LIEU OF CEILING UNDER HATCHWAYS.

ADDITIONAL INTERCOSTALS IN ENGINE SPACE



3 STRAKES OF PLATING TO HAVE MIDSHIP THICKNESS
CARRIED FOR 2' TO COLLISION BULKHEAD

HULL 442(85+30) = 37570 ✓
SHELTER DECK 75' x 442' x 6" = 2652 ✓
FORECASTLE 75' x 45' x 7.5" = 255 ✓
MIDSHIP HOUSE 103' x 18' x 8" = 415.16 ✓
STEERING GEAR HOUSE 36' x 10' x 5" = 144 ✓
OFFICERS' HOUSE ON BRIDGE 20' x 14' x 5" = 70 ✓
4112.16 ✓

FORECASTLE STRAINER PLATE 36' x 56' ✓
BRIDGE ON PLATE BUTTS ✓
11" WATERWAY, OUTER ANGLE 3' x 3' x 30' ✓

EQUIPMENT

3 BOWER ANCHORS COLL. WT. 207 CWTs STOCKLESS. 2 AT 72 1/2 CWTs ✓
1 STREAM 20" EX. STOCK ✓
1 KEDGE 9" ✓
300 FATHOMS 2 1/2" STUB CHAIN CABLE ✓
120 5" STEEL WIRE (STREAM) ✓
130 5 1/2" (TOWLINE) ✓
(4 COILS) 100 FATHOMS 8" MANILLA OR EQUIVALENT
IN STEEL WIRE HAWERS 2 1/4" ✓

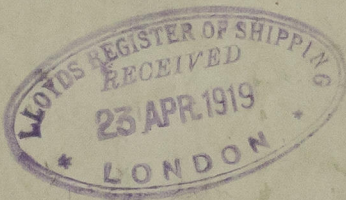
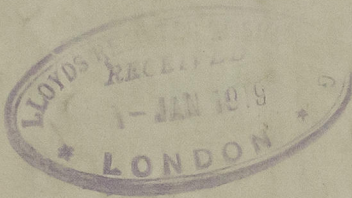
NOTE:- 2 ROWS OF PILLARS & GIRDERS
PLAN TO BE SUBMITTED.

NOTE:- SIX STRAKES INCREASED 1/8" IN LIEU OF SIDE STRINGER.

allidship Section

N. 503

D. v. Henderson



GLASGOW REPORT No. 40372

3/5 Lalande

CRISTINA MARIA G.

"CRISTINA MARIA"