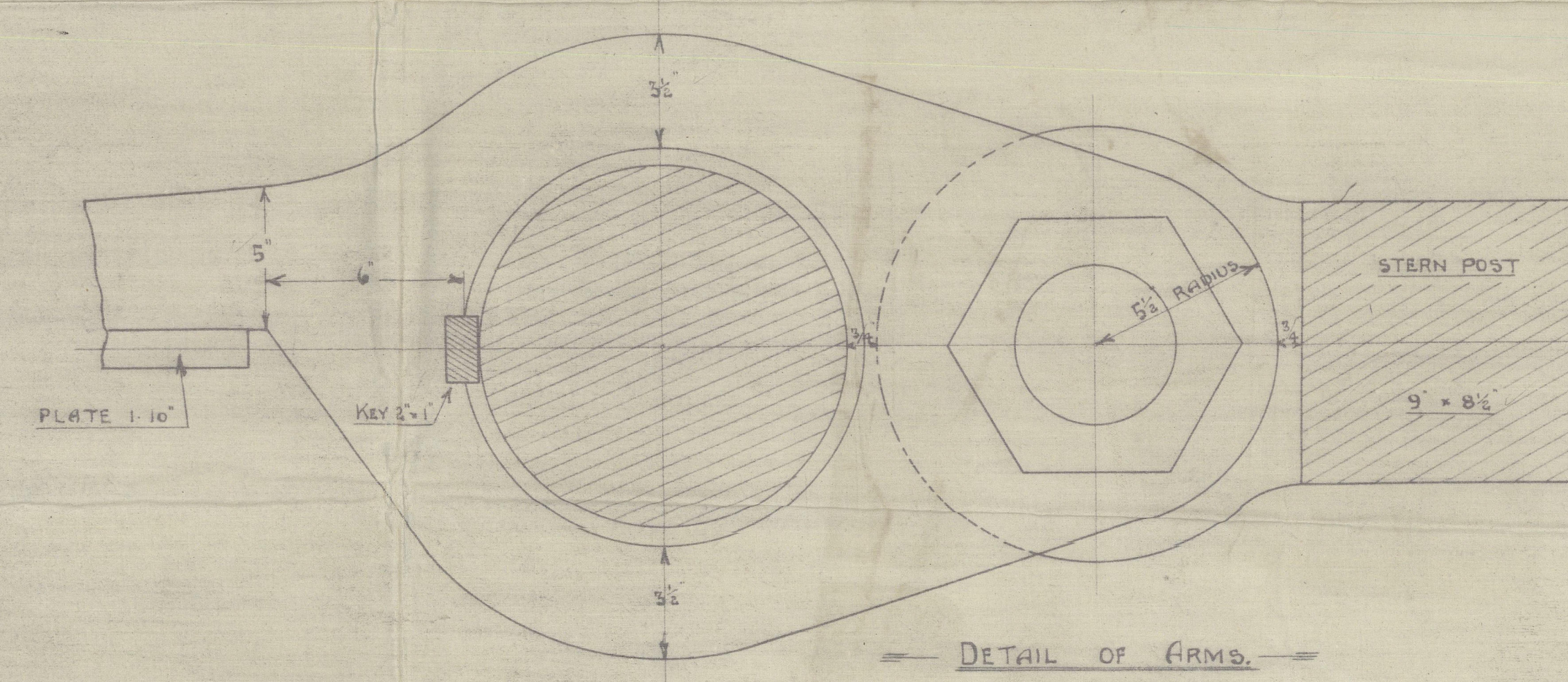


DETAIL OF PINTLE



DETAIL OF ARMS.

DETAIL OF STOPPER AR



RUDDER PLAN

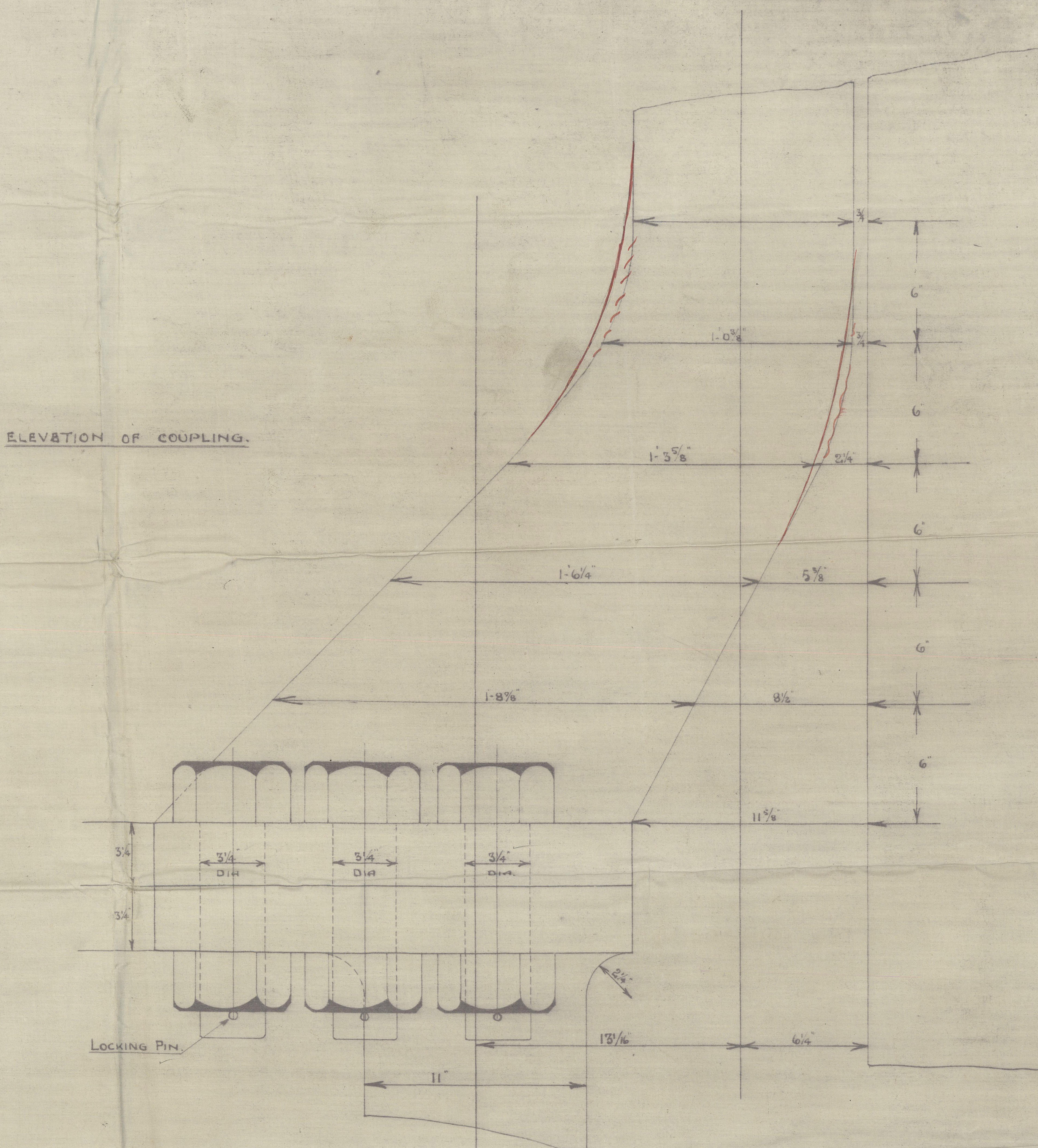
SS N° 503

SCALE  $\frac{1}{2}" = \text{ONE FOOT}$   
DETAILS  $\frac{3}{8}" = \text{ONE FOOT}$

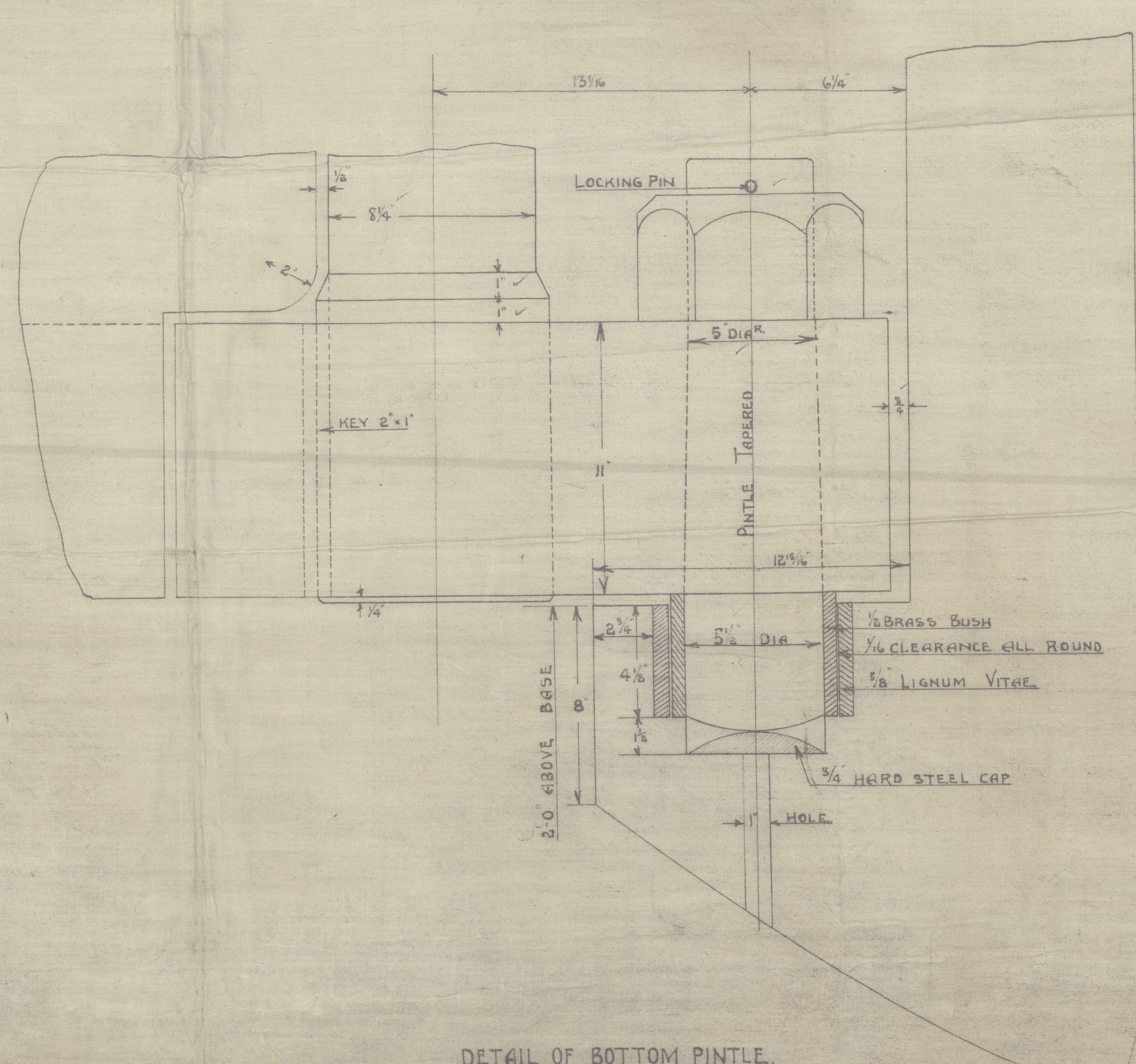
RUDDER HEAD 1" Dia<sup>R</sup> PINTLES 5/8" Dia<sup>R</sup> OWNERS REQUIREMENTS  
SPEED 10-12 KNOTS.

$$A = 145, D = 3.91, A \times D = 566.9.$$

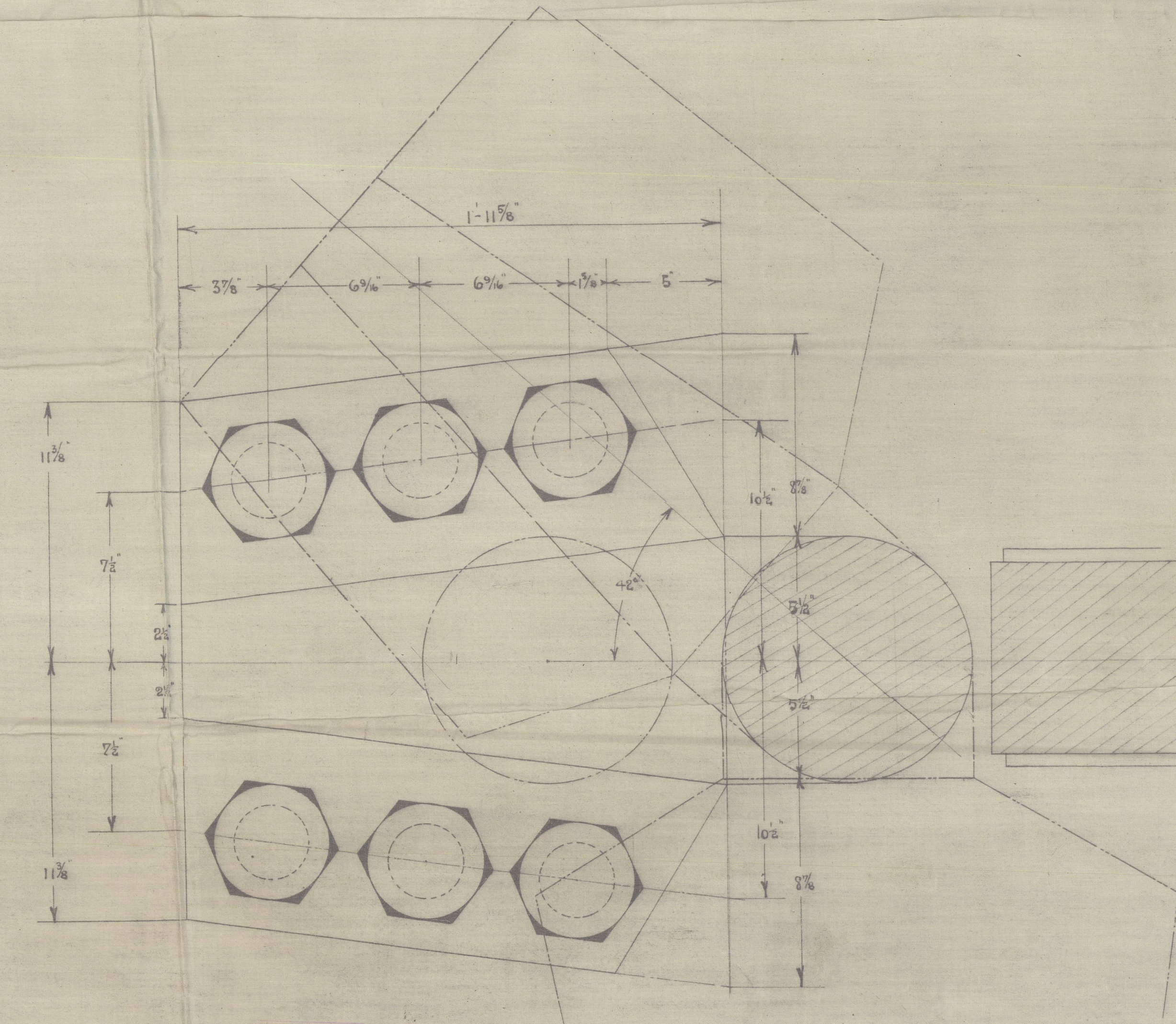
NOTE. RUDDER STOCK 11' AT HEAD TO 5' AT HEEL  
WITH STRAIGHT TAPER BETWEEN EXCEPT IN WAY OF ARMS  
WHERE IT IS TURNED 1" LARGER THAN DIA. OF STOCK ABOVE  
ARM & IS PARALLEL FOR 1" ABOVE & BELOW ARM.



ELEVATION OF COUPLING.



DETAIL OF BOTTOM PINTLE.



PLAN OF COUPLING.



5753



© 2020

Lloyd's Register  
Foundation



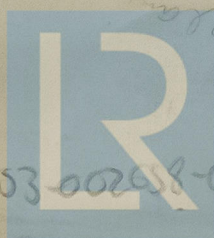
N<sup>o</sup>. 503.

Rudder Plan

GLASGOW REPORT No. H0372

<sup>5</sup>/<sub>5</sub> Lalande

To Henderson



© 2020

Lloyd's Register  
Foundation

002653-002658-0093