

# Lloyd's Register of Shipping.

## SURVEYS FOR FREEBOARD.

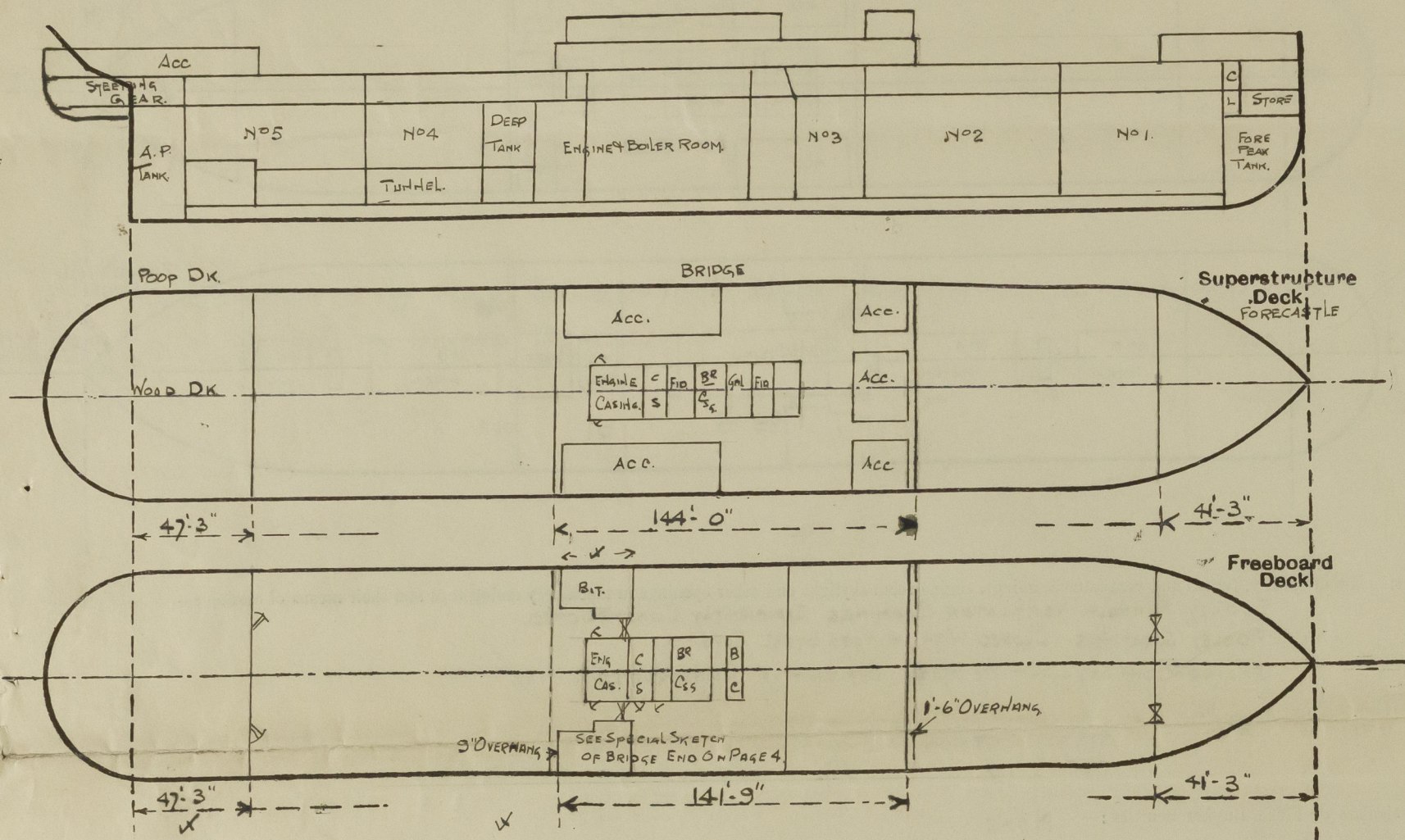
(CONDITIONS OF ASSIGNMENT.)

APR 23 1940

GRK REPORT N° 20951.

Ship's Name **DALESMAN.** Port of Survey **GREENOCK**  
 Official Number **✓ 166295** Surveyor's Signature **Kenneth Inglis.**  
 Nationality and Port of Registry **BRITISH, LIVERPOOL** Date of Survey **WHILE BUILDING.**

Disposition and dimensions of superstructures, trunks, deckhouses and machinery casings to be inserted in the diagrams and tabular statement:—



Particulars of Superstructures, Trunks, Casings, Deckhouses.

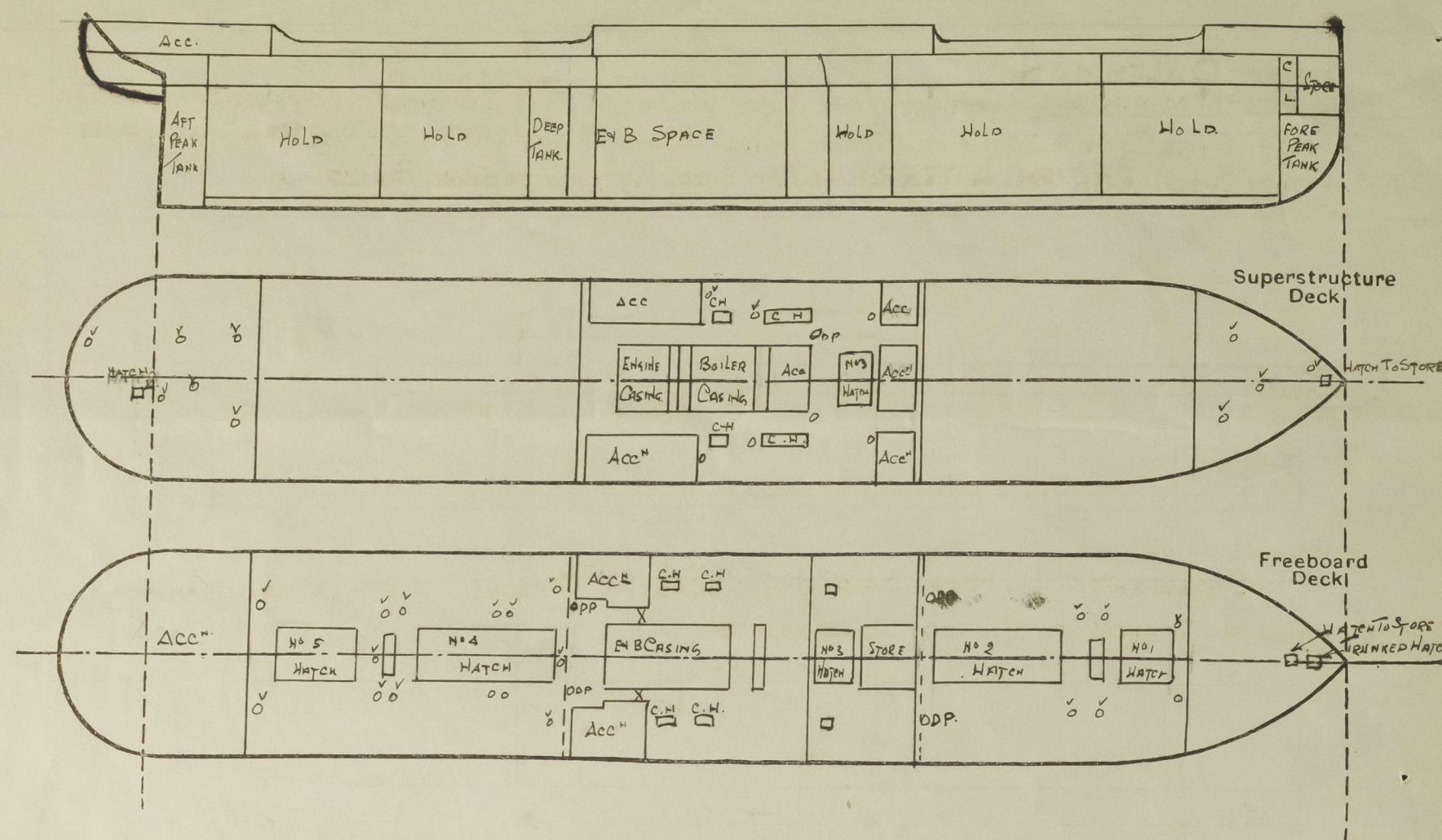
	Coaming	Plating	Stiffeners	Spacing	End Attachments of Stiffeners	Size of Openings	Height of Sills	Height of Casings
Poop Bulkhead ...	.38	.38	6 x 3 x .32 BA	24" - 30"	LUGS	2 @ 5'-0" x 2'-0"	18	7-11½
Raised Quarter Deck Bulkhead ✓	.40	.30	3 x 3 x .30	27				
Bridge, After Bulkhead ...	.30	.30	4 x 3 x .34	31	NONE	2 @ 5'-0" x 3'-8"	18"	7-11½
Bridge, Forward Bulkhead ...	.44	.44	9 x 3½ x .50 BA	31	LUGS TOP & BOTTOM	NONE	✓	7-11½
Forecastle Bulkhead ...	.30	.30	4 x 3 x .32	30" & 27"	NONE	5'-6" x 4'-0"	12"	7-11½
Trunk, Aft ... ✓								
Trunk, Forward ... ✓								
Exposed Machinery Casings on Freeboard or Raised Quarter Decks ...	.40	.32	4 x 3 x .34	33½	NONE	5'-0" x 2'-6"	18"	7-11½
Exposed Machinery Casings on Superstructure Decks ...	.34	.30	3 x 3 x .30	33 - 27	CONT'S TOP & BOTTOM	5 @ 5'-0" x 2'-6"	18	7-6
Machinery Casings within Superstructures not fitted with Class I Closing Appliances ...	.40	.30	3 x 3 x .30	27	CONTINUOUS	2 @ 5'-0" x 4'-0"	18"	7-6"
Deckhouses on Flush Deck Ships ...								

Particulars of Closing Appliances (state if capable of being manipulated from both sides).

Poop Bulkhead ...	2" SOLID WOOD DOORS (TEAK) WORKABLE FROM BOTH SIDES. ✓
Raised Quarter Deck Bulkhead ... ✓	SHIFTING BOARDS ¾" THICK IN CHANNELS FULL HEIGHT & RIVETED TO BULKHEAD. <i>now by table steel plates with hook bolts 22.5.58</i>
Bridge, After Bulkhead ...	2" SOLID WOOD DOORS TO SIDEHOUSES WORKABLE FROM BOTH SIDES.
Bridge, Forward Bulkhead ...	NO OPENINGS. ✓
Forecastle Bulkhead ...	SHIFTING BOARDS ¾" THICK IN CHANNELS FULL HEIGHT & RIVETED TO BULKHEAD. <i>ALSO BOLTED PLATE NOT PASSING THROUGH BULKHEAD.</i>
Exposed Machinery Casings on Freeboard or Raised Quarter Decks ...	STEEL DOORS, WORKABLE FROM BOTH SIDES. ✓
Exposed Machinery Casings on Superstructure Decks ...	STEEL DOORS.
Machinery Casings within Superstructures not fitted with Class I Closing Appliances ...	STEEL DOORS TO COAL SHOOT WORKABLE FROM TWINDRKS ONLY. ✓
Deckhouses on Flush Deck Ships ... ✓	" " WORKABLE FROM BOTH SIDES. ✓



The following diagrams should be used to indicate the positions of cargo and coaling hatchways, gangway, cargo and coaling ports, ventilators, companionways, etc., which would affect the seaworthiness of the ship :—



FIDOLEY, FUNNEL, VENTILATOR COAMINGS EFFICIENTLY CONSTRUCTED.

FIDLEY GRATINGS CLOSED WITH HINGED STEEL COVERS.

ENGINE ROOM SKYLIGHT OF STEEL EFFICIENTLY CONSTRUCTED.

Particulars of Flush Bunker Scuttles:— NONE

Particulars of Companionways:— None.

Particulars of Ventilators in exposed positions on freeboard and superstructure decks :—

POOP DECK -

4-15" DIA	TO PASSAGE IN CREW SPACE	COAMING 30"x37"	✓
3-12" "	" " STEERING GEAR STORE	" 30"x30"	✓
1-22" "	" " HOLD	" 36"x46"	✓
1-12" "	" " STORE	" 36"x37"	✓

BRIDGE DECK -		COAMING	30" x 40	✓
2 - 18" DIA.	TO HOLD.	"	30" x 40	✓
2 - 18" DIA.	" TWIN DKS.	"	30" x 40	✓
2 - 20" DIA.	D.P. TO HOLD.	"	30" x 40	✓
4 - 15" "	" BUNKERS TWIN DKS.	"	30" x 37	✓
4 - 7" "	" ACCOMMODATION.	"	30" ABOVE WOOD x 30	✓
1 - 9" "	" STORE	"	30" x 32	✓

FORECASTLE DECK:-

1- 22" DIA TO HOLD	COAMING	36" x 40"	✓
2- 18" " " FLETH WDKS.	"	36" x 40"	✓
1- 10" " " STORE	"	36" x 35"	✓
1- 9" " " CHAIN LOCKER	"	36" x 32"	✓

Particulars of Air Pipes in exposed positions on freeboard, raised quarter, or superstructure decks :—

POOP DECK -  
2 - 2 1/2" DIA TO AFT PEAK TANK.  
2 - 3 1/2" " " HOLD WELL.

BRIDGE DECK  
8 - 2 1/2 DIA TO DOUBLE BOTTOM TANKS.

UPPER DK AFTER WELL -  
8 - 2 1/2" DIA To DOUBLE BOTTOM TANKS  
1 - 2" " " COFFERDAM.

UPPER Dk FORWARD WELL -  
4 - 2 1/2" DIA TO DOUBLE BOTTOM TANKS

UPPER DR FOR WELL -

6 - 18" DIA To Hole & TW Drills Casing 4'-0" x 40  
2 - 24" " DERRICK POST To Hole

UPPER DKAFTERWELL -

9-18" DIA TO HOLD TWIN DKS.	COAMING 4'-0" x .40	✓
4-15" " " DEEPTANKS	" 4'-0" x .40	✓
1-12" " " TUNNEL.	" 3'-0" x .32	✓

ALL VENTILATORS CONSTRUCTED TO RULE REQUIREMENTS  
+ PROVIDED WITH WOOD PLUGS + CANVAS COVERS  
COAMINGS OVER 3'-0" IN HEIGHT STAYED. ✓

FORECASTLE DECK -

1-3 1/2" DIA TO HPI TANK  
1-3" DIA TO FORE PEAK TANK

AIR PIPES IN WELLS 36" IN HEIGHT.  
" " ON POOP BRIDGES FCL 18" IN HEIGHT.

ALL AIR PIPES FITTED WITH WOOD PLUGS

Particulars of Gangway Cargo and Coaling Ports:—

NONE.

Salesman

Particulars of Scuppers and Sanitary Discharge Pipes :—

SCUPPERS ON FREEBOARD DECK:- STRINGER BAR CUT IN WELLS. IN POOP, BRIDGE & CLE SPACES SCUPPERS LED THROUGH SHIPS SIDE & FITTED WITH STORM VALVES. BOLTED PLATE COVERS OR BRASS PLUGS FITTED AT INNER END. ALL SANITARY DISCHARGES PASSING THROUGH SHIPS SIDE FITTED WITH STORM VALVES.

Particulars of Side Scuttles :—

SIDE LIGHTS IN POOP, BRIDGE & FORECASTLE SPACES, 10' DIA, OF SUBSTANTIAL CONSTRUCTION & FITTED WITH HINGED DEADLIGHTS. ✓

Vertical distance of Sill of lowest Side Scuttle above top of keel **No SIDELIGHTS BELOW FREEBOARD DECK.**

Particulars of Guard Rails :—

Rails :-  
 POOP & FORECASTLE DECKS :- RAILS 3'-6" HIGH WITH 4 RODS STANCHIONS SPACED ABOUT 4'-6" APART  
 BRIDGE DECK :- STEEL BULWARK 3'-6" HIGH STRONGLY CONSTRUCTED WITH OPEN RAILS  
 IN WAY OF HATCH. ✓

Particulars of Gangways, Lifelines, etc.:—

LIFELINES PROVIDED IN FOREN APTWELLS FOR THE PROTECTION OF THE CREW.

Particulars of Freeing Arrangements.						
	Length of Bulwark	Height of Bulwark	Size of Freeing Ports	Number each side	Area each side	Rule area each side
After Well ... ..	108'-0"	4'-0"	4'-0" x 16"	5	25 <sup>sq</sup>	21.6 sq
Forward Well ... ..	103.5'	4'-0"	4'-0" x 16"	5	25 <sup>sq</sup>	20.75 sq

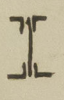
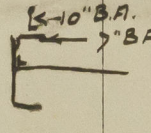
State position of each freeing port ... .. { After Well : FROM BRIDGE END - 4'-21"-31'-64'-82' }  
(F. and A. position and height above deck edge) { Forward Well : FROM BRIDGE FRONT - 6'-17'-42'-53'-63' } 15" ABOVE DECK

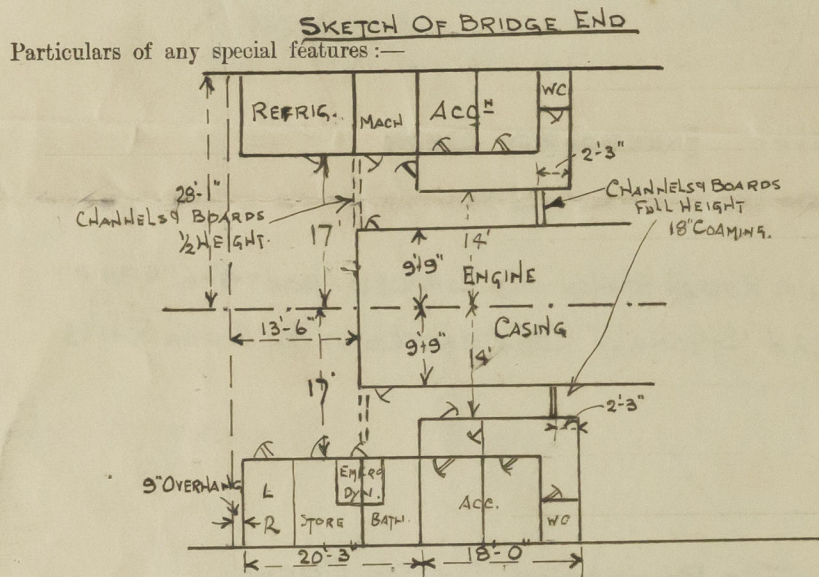
State whether the freeing ports are fitted with shutters, bars, or rails, and give particulars of such :— ONE BAR FITTED.

Additional area where sheer is less than standard.



# PARTICULARS OF PROTECTION TO OPENINGS, ETC.

HATCHWAYS ON FREEBOARD AND SUPERSTRUCTURE DECKS.							
Description of Hatchway ... ..	UPPER DECK					BRIDGE DECK	COALING HATCHES BRIDGE DECK
	Nº1	Nº2	Nº3	Nº4	Nº5	Nº3	
Dimensions of Hatchway ... ..	20'3" x 17'0"	45' x 17'0"	11'3" x 17'0"	45'0" x 17'0"	18'0" x 17'0"	9'0" x 17'0"	13'6" x 4'0" P.S. & 6'9" x 4'0" P.S. COAMING 30" x 48" STIFFENED AT 13'6" HATCH FITTED WITH 3" WOOD COVERS, 2 TARPAILINS CLEATS 24" APART & USUAL BATTENING ARRANGEMENTS. UPPER DECK INSIDE BRIDGE - 9' x 5' P.S., 6'9" x 5' P.S. & 4'6" x 5' STARS COAMING 30" x 40" FITTED WITH 3" COVERS WOOD ONE TARPAILIN CLEATS 24" APART & USUAL BATTENING ARRANGEMENTS. 4'6" x 4'0" P.S. COAMING 9' x 3' x 40" B.A. - 3" WOOD COVERS ONE TARPAILIN. CLEATS 24" APART & USUAL BATTENING ARRANGEMENTS. HATCHES TO FORWARD STORE ON FORECASTLE DECK 3'0" x 2'0" COAMING 18' x 40" FITTED WITH W.T. STEEL COVERS 40 THICK. WITH BOLTS SPACED 4 1/2" APART & TANKED TO UPPER DECK. IN FORECASTLE TWIN DECKS 3'0" x 3'0"
COAMINGS { Height above Deck ... .. Thicknes { Sides ... .. Stiffeners ... BA 7 x 3 1/2 x 55 Brackets, Stays ... 2" ROUND IRON	30" 55 55	30" 55 55	18" 48 40	30" 55 55	30" 55 55	30" 55 55	
HATCH BEAMS { Number ... .. Spacing ... .. Scantling and Sketch ... 	3 5'0 3/4 15 x 35	9 4'6" 15 x 30	5 1/2 5'7 1/2 15 x 36	9 4'6" 15 x 30	3 4'6" 15 x 30	4 1/2 4'6" 15 x 32	
Bearing Surface ... ..	3	3	3	3	3	3	
FORE AND AFTERS { Number ... .. Spacing ... .. Unsupported Lengths ... .. Scantling* and Sketch ... 		5'10" B.A. 7" B.A.					
Bearing Surface ... ..			2 1/2" STEEL STRIPS TOP & BOTTOM				
HATCH COVERS { Material ... .. Thickness ... .. How fitted ... .. Bearing Surface ... ..	W.P. 3 F4 A 3	W.P. 3 F4 A 3	W.P. 3 F4 A 3	W.P. 3 F4 A 3	W.P. 3 F4 A 3	W.P. 3 F4 A 3	
Spacing of Cleats ... ..	24	24	24	24	24	24	
Number of Tarpaulins ... ..	2	2	1	2	2	2	
<p>*Are wood fore and afters steel shod at all bearing surfaces? <input checked="" type="checkbox"/> YES.</p> <p>Are battens and wedges efficient and in good condition? <input checked="" type="checkbox"/> YES.</p> <p>Are tarpaulins in good condition and in accordance with rule requirements? <input checked="" type="checkbox"/> YES.</p> <p>Are lashings provided in accordance with rule requirements? <input checked="" type="checkbox"/> YES.</p>							



Endorsement at first survey and at surveys for renewal of Certificate:—

The fittings and appliances are in accordance with the particulars shown on this form (or as now modified) and are in good condition.



© 2020

Lloyd's Register  
Foundation