

Nº 368.

RUDDER PLAN.

SCALE $\frac{3}{4}$ " = 1 FOOT.

RUDDER TO BE OF FORGED STEEL.

A x D = 83.31 x 3.16 = 263.26.

SPEED 10 KNOTS.

SEP 1942

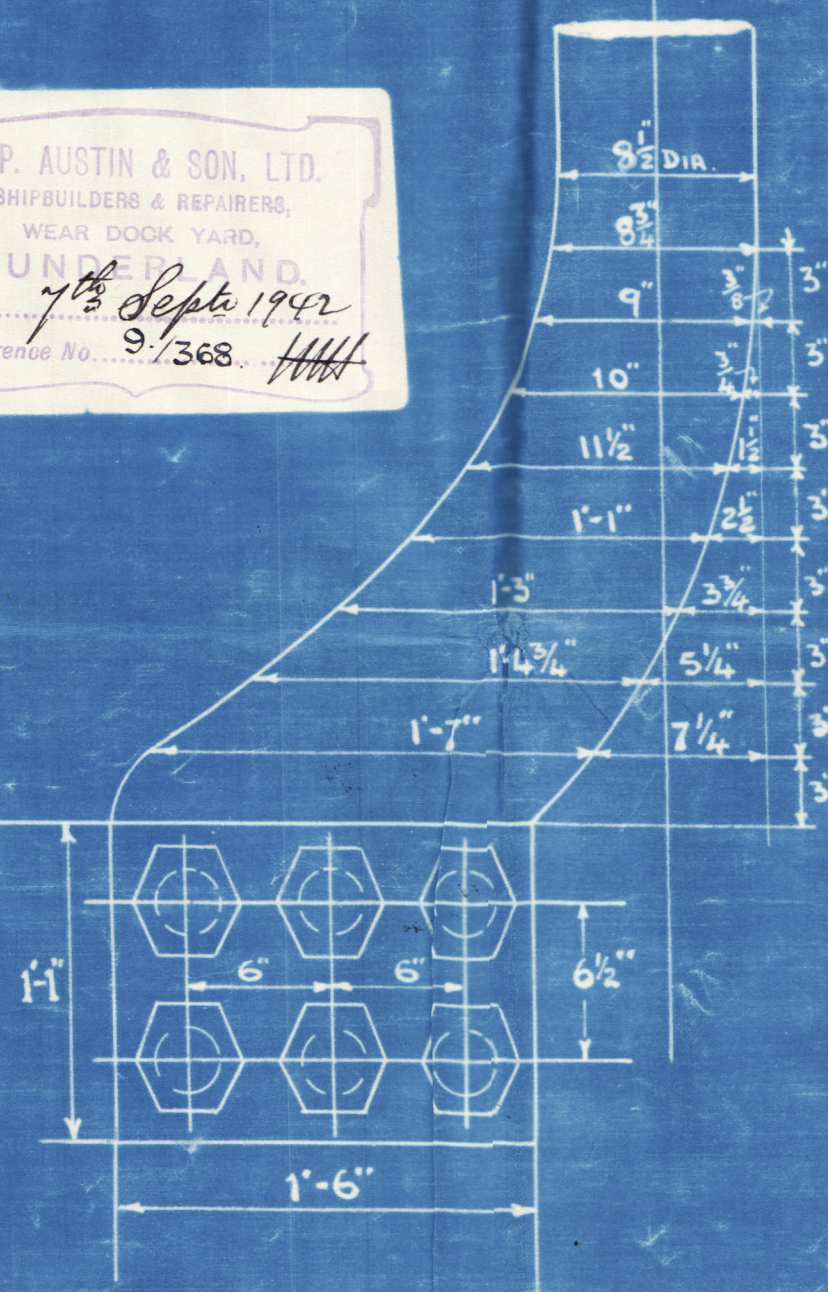
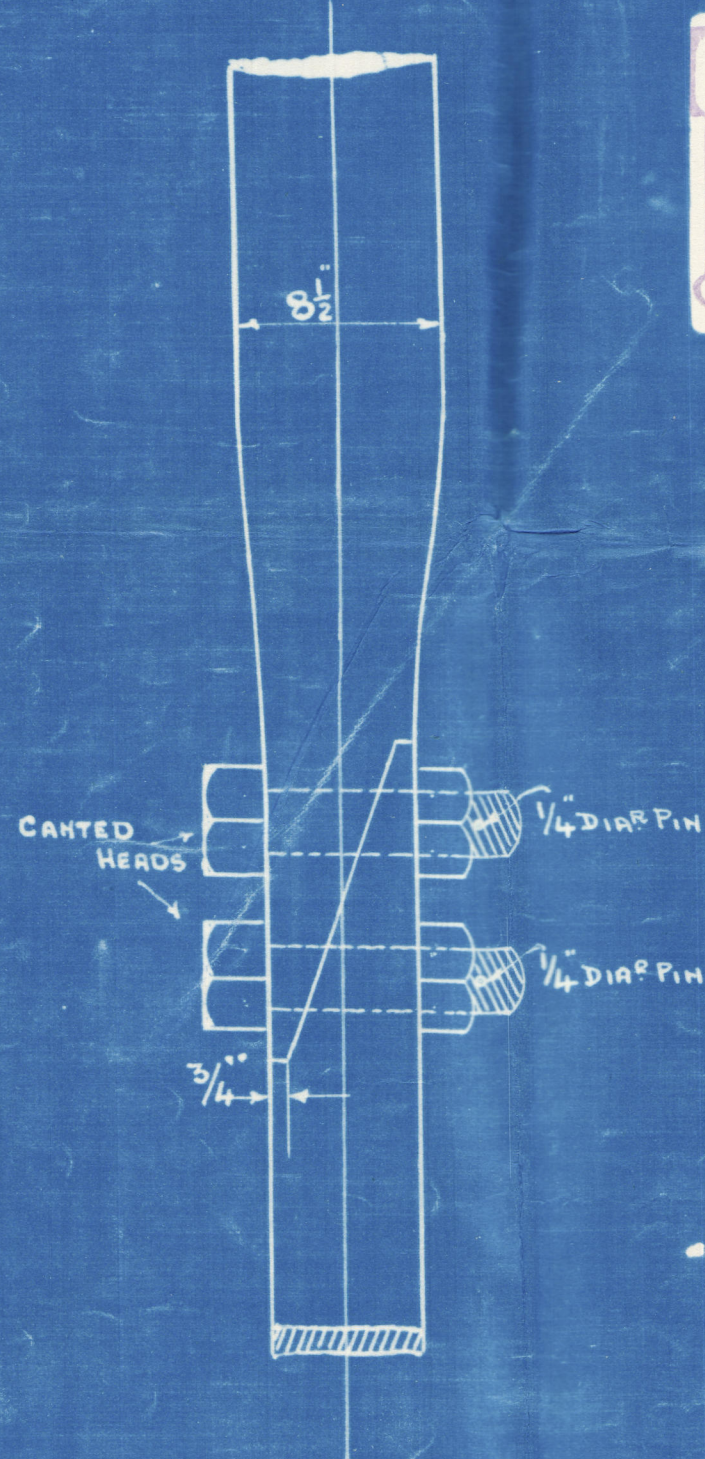
SEE SKETCH ON LEFT

DETAIL OF PINTLES.
SCALE $\frac{3}{4}$ " = 1 FT.

DETAIL OF COUPLING.
SCALE $\frac{1}{2}$ " = 1 FT.

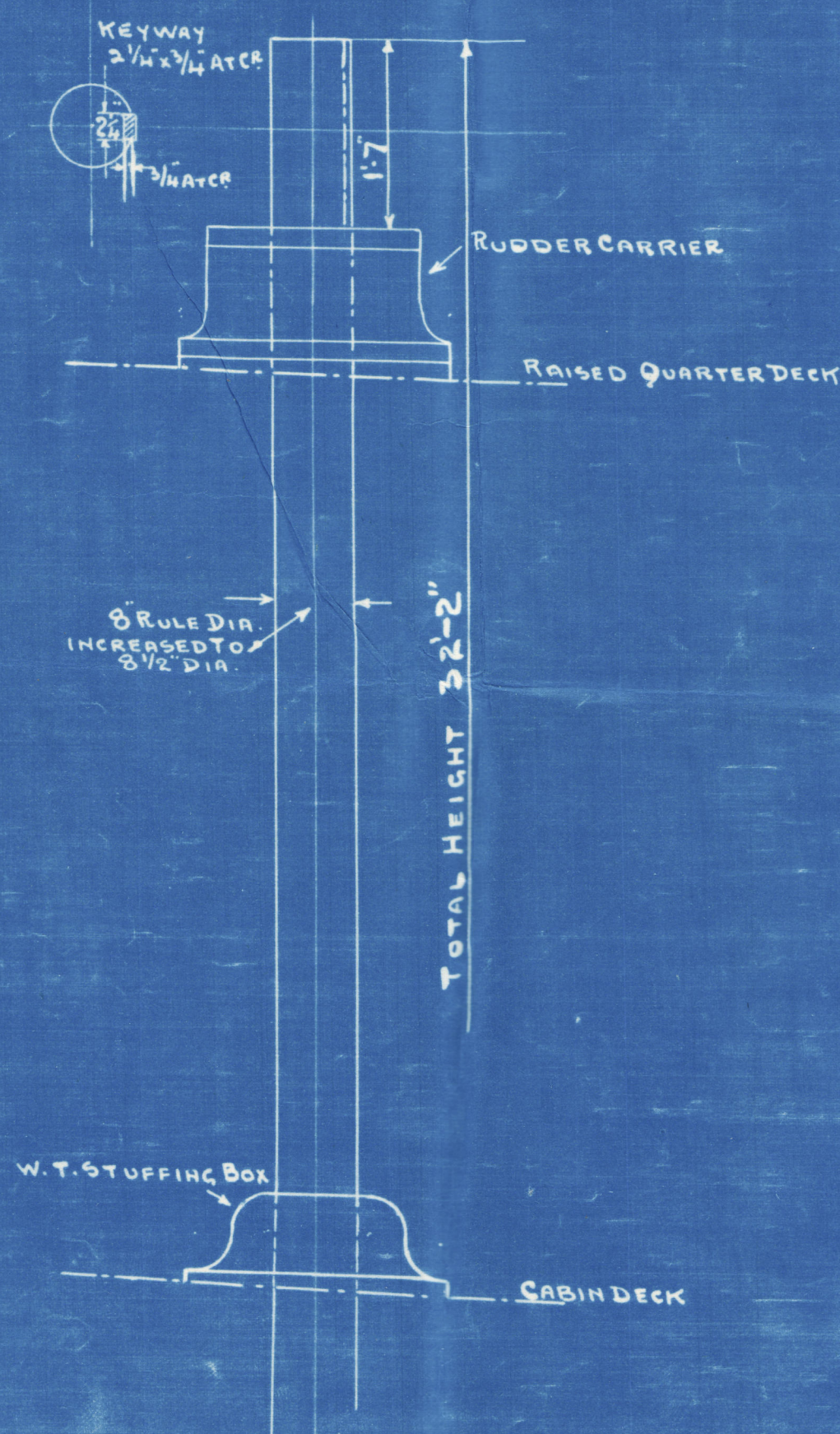
DETAIL OF COUPLING.
SCALE $\frac{1}{2}$ " = 1 FT.

S. P. AUSTIN & SON, LTD.
SHIPBUILDERS & REPAIRERS,
WEAR DOCK YARD,
SUNDERLAND.
Date... 7th Sept 1942
Reference No. 9/368. HHH

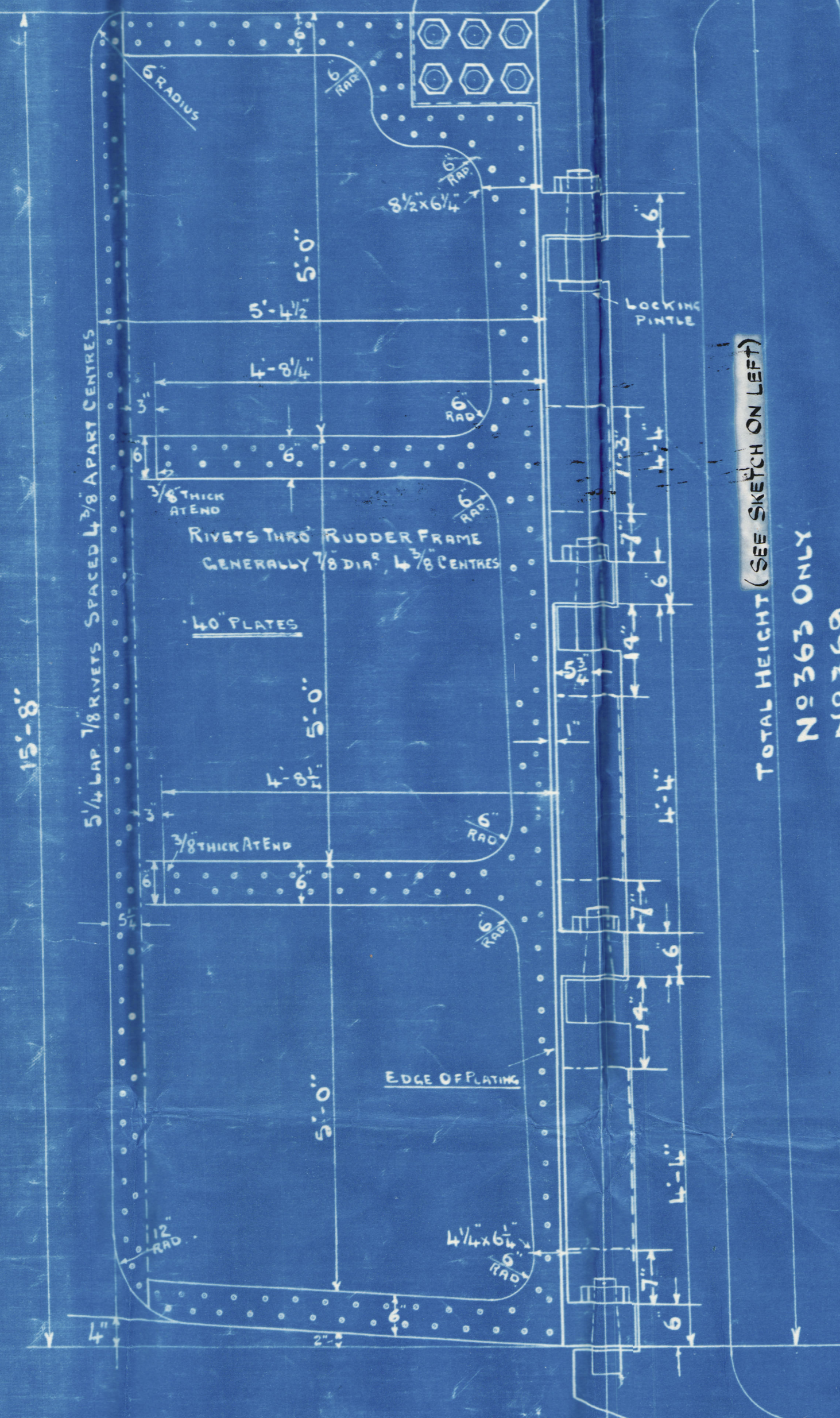


BOLTS TO HAVE CANTED HEADS.

Nº 365 ONLY
Nº 368.



2 5/8 DIA. BOLTS FITTED.



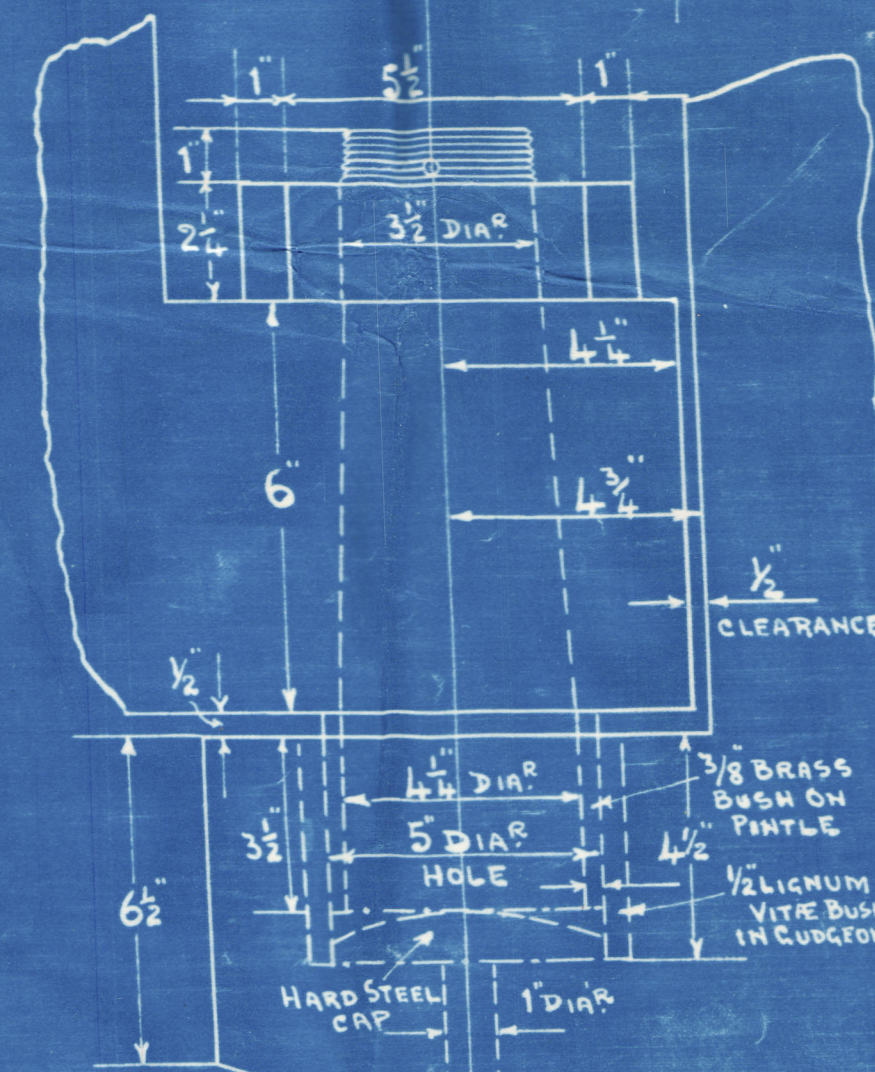
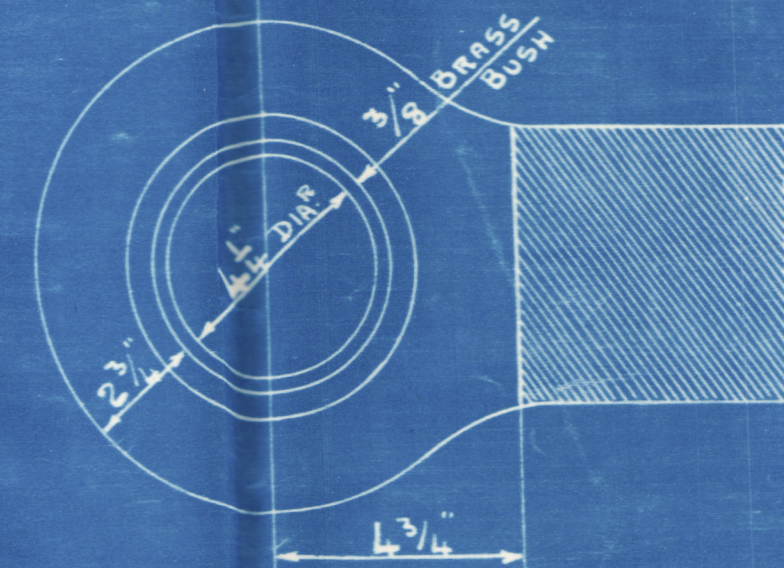
TOTAL HEIGHT (SEE SKETCH ON LEFT)

Nº 365 ONLY
Nº 368.

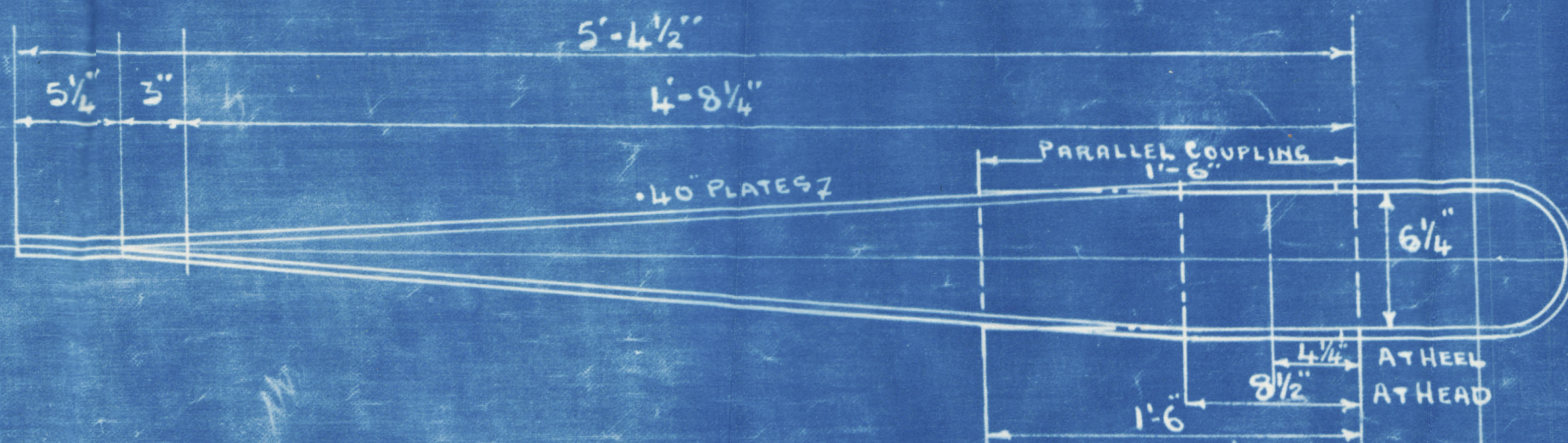
RUDDER STOCK

RULE DIA. 8". FITTED 8 1/2"

RULE - PINTLES 1/4" DIA. FITTED 1/4"



SECTION IN WAY OF ARMS.
SCALE $\frac{1}{2}$ " = 1 FOOT.



S. P. Austin & Son. Ltd
yard nos 368/9.

~~Sternframe~~ & Rudder.

BUNDERLAND RPT. NO. 33799

"Wrenwood"



© 2020

Lloyd's Register
Foundation

002639-002646-0037