

# N<sup>o</sup> 506. MIDSHIP SECTION

SCALE: 1/2" = 1 FOOT

LENGTH B.P. 435'-0". BREADTH MLD. 58'-6". DEPTH MLD. 38'-0"/29'-6"

DRAFT MLD. 25'-7 1/2". CLASS +100 A.I. AT LLOYDS.

UPPER DECK SHEER FORD. 9'-6" AFT 4'-6".

LOWER DECK SHEER FORD. AFT 4'-6".  
NOT YET SETTLED.

## EQUIPMENT NUMERAL

L(O+D)	435 (58.5+38)	435 x 96.5	41977.5
FORECASTLE	75 x 41 x 7.5		230.6
AFTER DECKHOUSE	50 x 33 x 8.5		140.3
MIDSHIP HOUSE	50 x 34 x 8.0		376.0
OFFICERS HOUSE	50 x 27.5 x 8.0		110.0
TOTAL			42834.4

## EQUIPMENT [NUM. 43200 CLASS B.T.]

2 BOWER ANCHORS, STOCKLESS	72 1/2 cwt. EACH
1 BOWER ANCHOR, STOCKLESS	62 cwt.
1 STREAM ANCHOR	20 1/2 cwt.
300 FATHOMS 2 1/2" STUD CHAIN CABLE OR 2 1/2" 'TAYCO' CABLE	
120 FATHOMS 5" 1/2 FLEXIBLE STEEL WIRE ROPE	
130 FATHOMS 5" 1/2 SPECIAL FLEX STEEL WIRE ROPE - TOWLINE	
2 HAWSERS 100 FATHOMS 2 3/4" 1/2 FLEX STEEL WIRE ROPE	
2 WARPS 100 FATHOMS 2 3/4" 1/2 FLEX STEEL WIRE ROPE	

## WELDING

THE SOCIETY'S REQUIREMENTS FOR ELECTRIC ARC WELDING TO BE COMPLIED WITH AS FAR AS THEY ARE APPLICABLE. NO UNDUE RESTRAINT TO BE APPLIED TO ANY MEMBER WHILE BEING WELDED. CARE TO BE TAKEN TO ENSURE AMPLIFIED PENETRATION BY ALL WELDS.

## RIVETING

HOLD FRAMES TO SHELL IN 24" 27" SPACING	7 DIAS	BOUNDARY ANGLES & STIFFENERS OF WATERTIGHT FLOORS 5 DIAS
HOLD FRAMES TO SHELL IN 30" SPACING	6 1/2	STRINGER ANGLE - 6 x 6 DOUBLE RIVETED
HOLD FRAMES TO SHELL IN DEEP TANK & PEAK TANKS	5 1/2	STRINGER ANGLE - 3 1/2 x 2 1/2 SINGLE RIVETED
HOLD FRAMES TO SHELL IN PAINTING AREA	5 1/2	BEAMS TO DECK
TWEEN DECK FRAMES TO SHELL	7	BEAMS AT CROWN OF DEEP TANK & PEAK TANKS
BOTTOM FRAMES TO SHELL & FLOORS	7	HATCHWAY DECK ANGLES TO DECK & COAMINGS
BTM FRAMES TO SHELL IN FORD 25L	5 1/2	HATCHWAY DECK ANGLES TO DECK & COAMING AT CORNERS
FLOORS & CROSS TIES IN FORE PEAK	6	BULB ANGLE STIFFERS ON COAMING
FLOORS & CROSS TIES IN AFTER PEAK	5	HATCH BEAM ANGLES
KEEL ANGLES - DOUBLE RIVETED	6 1/2	
CENTRE GIRDER TOP ANGLES	7	SIZES OF RIVETS GOVERNED BY THICKNESSES OF PLATING.
CENTRE GIRDER TOP ANGLES IN WAY OF B.B.D.	5	
VERTICAL ANGLES, FLOOR TO CENTRE GIRDER	5	FOR REST OF RIVETING SEE "PROFILE & DECK"
VERTICAL ANGLES, FLOOR TO INTERCOSTAL GIRDERS	7	
TOP & BOTTOM ANGLES OF INTERCOSTAL GIRDERS 5, 6, 7, 8 RIVS	4 1/2 DIAS	
MARGIN ANGLE	4 1/2 DIAS	

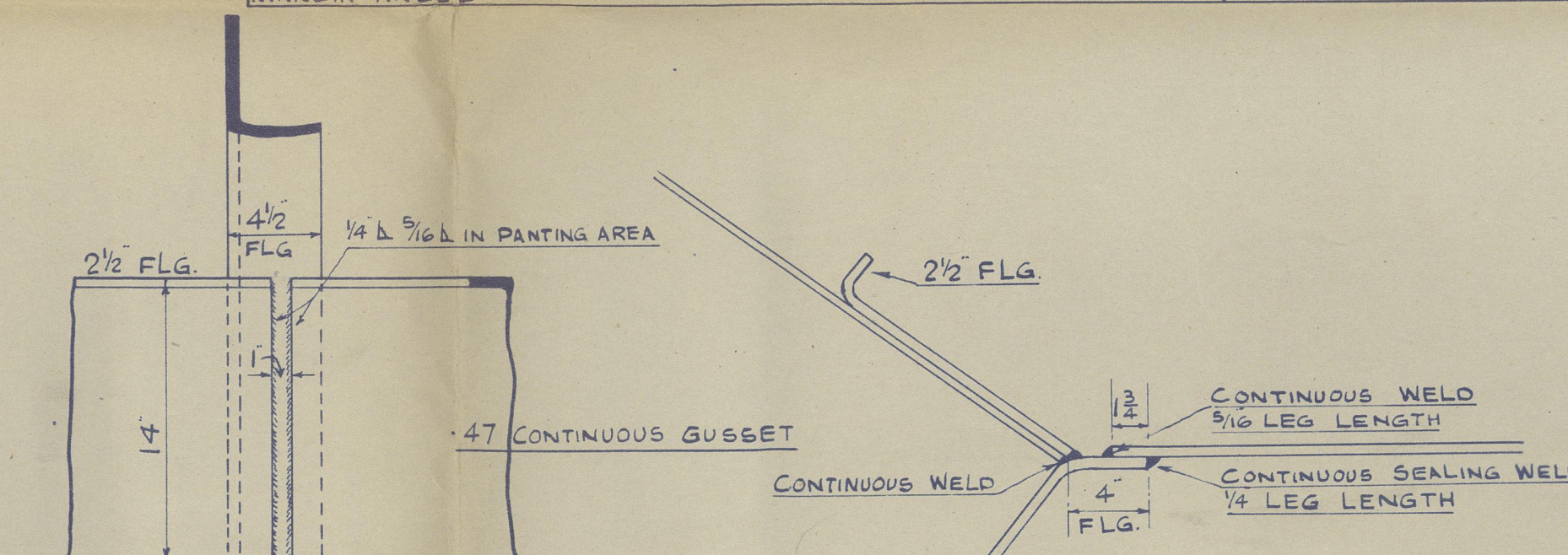
STEEL & BHD

STEM BAR 10 x 2 1/2  
STERNFRAME & RUDDER TO BE SUBMITTED  
BOSS PLATE 61 x 10 (FURNACING) : 71.

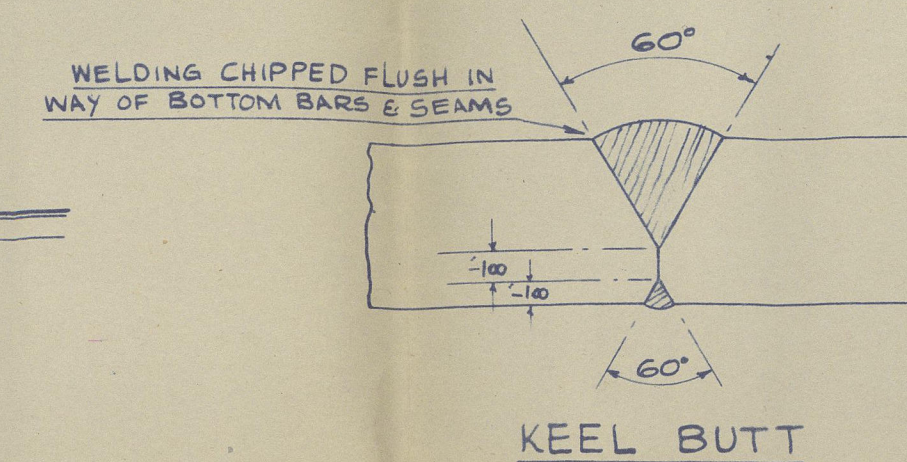
## DOUBLE BOTTOM

FOR SCANTLINGS IN MOTOR ROOM SEE SEPARATE PLAN  
44 1/2" ABOVE BASE LINE x 53 FOR 4L TO 45 FOR 1L AT ENDS  
62 IN WAY OF BOILER. BUTTS WELDED. TOP BARS DOUBLE 3 1/2 x 3 1/2 x 47-43  
BOTTOM BARS DOUBLE 5 x 5 x 46 - 43. VERTICAL ANGLES 3 1/2 x 3 1/2 x 41-43 T.E.  
10' 0" APART (SEE "PROFILE & DECK") : 41. TANK ENDS 49. PEAKS 45  
STIFFERS AT TANK ENDS 3 1/2 x 2 1/2 x 34 TOE WELDED 30" APART. BTM. FRAMES 3 1/2 x 3 1/2 x 41  
6 x 6 x 4 IN BTM FORD. REV. FRAMES 3 x 3 x 41 : ANGLES AT TANK ENDS 43 THK.  
SEE DETAIL BELOW  
37 IN HOLDS. 41 IN MOTOR ROOM. BOTTOM LUGS 3 1/2 x 3 1/2 x 37  
TOP LUGS 3 x 3 x 37. VERTICALS 3 x 3 x 37. ANGLES 4 THK IN MOTOR ROOM.  
WELDED CONSTRUCTION. PLATED ATWARTSHIPS. 43 IN HOLDS. TO 33  
FOR 1L AT ENDS. 51 UNDER HATCHWAYS. 51 IN MOTOR ROOM. 57 IN WAY OF BOILER.  
37 1/2 x 52 TO 32 x 52 AT AFT END. 53 IN WAY OF BOILER  
SHELL LUGS 3 1/2 x 3 1/2 x 51. FLOOR LUGS 3 1/2 x 3 1/2 x 41  
SEE DETAILS FOR HEIGHTS. 47 IN WAY OF 12 FRAMES. 4 IN WAY OF FRG.  
57 IN WAY OF BOILER. MARGIN LUG 3 1/2 x 3 1/2 x THK. OF BRACKET

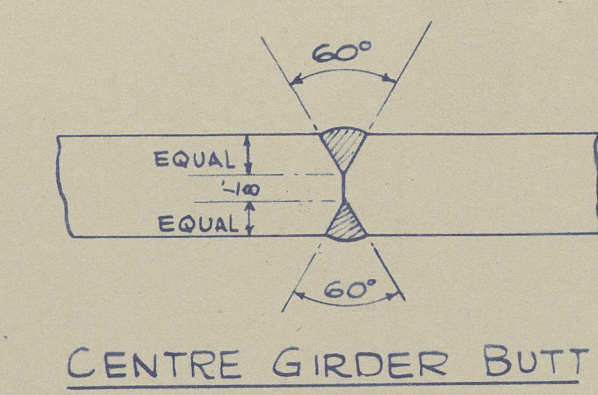
NOTE IN WAY OF SCOTCH BOILER (STBD SIDE ONLY). ALL ANGLES IN DOUBLE BOTTOM, STIFFERS ON W.T. FLOORS, TANK SIDE BRACKETS, GUSSETS & CONNECTING ANGLES TO BE INCREASED BY 10."



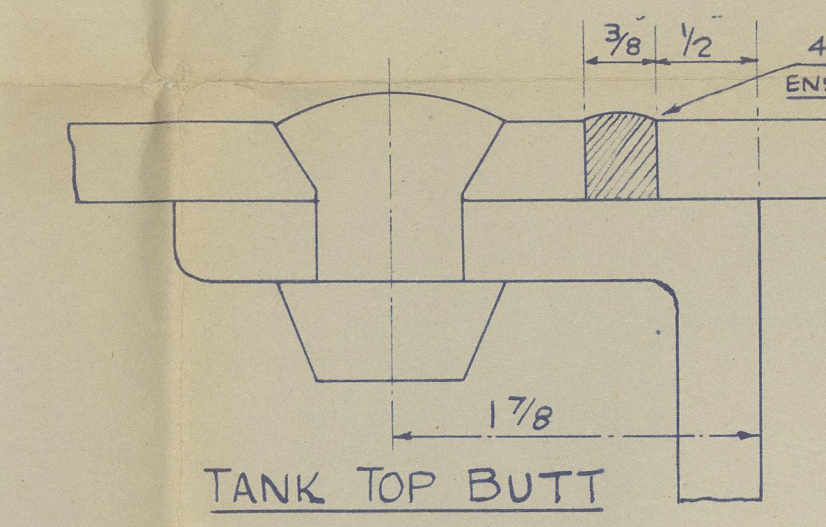
TANK BRACKET GUSSET



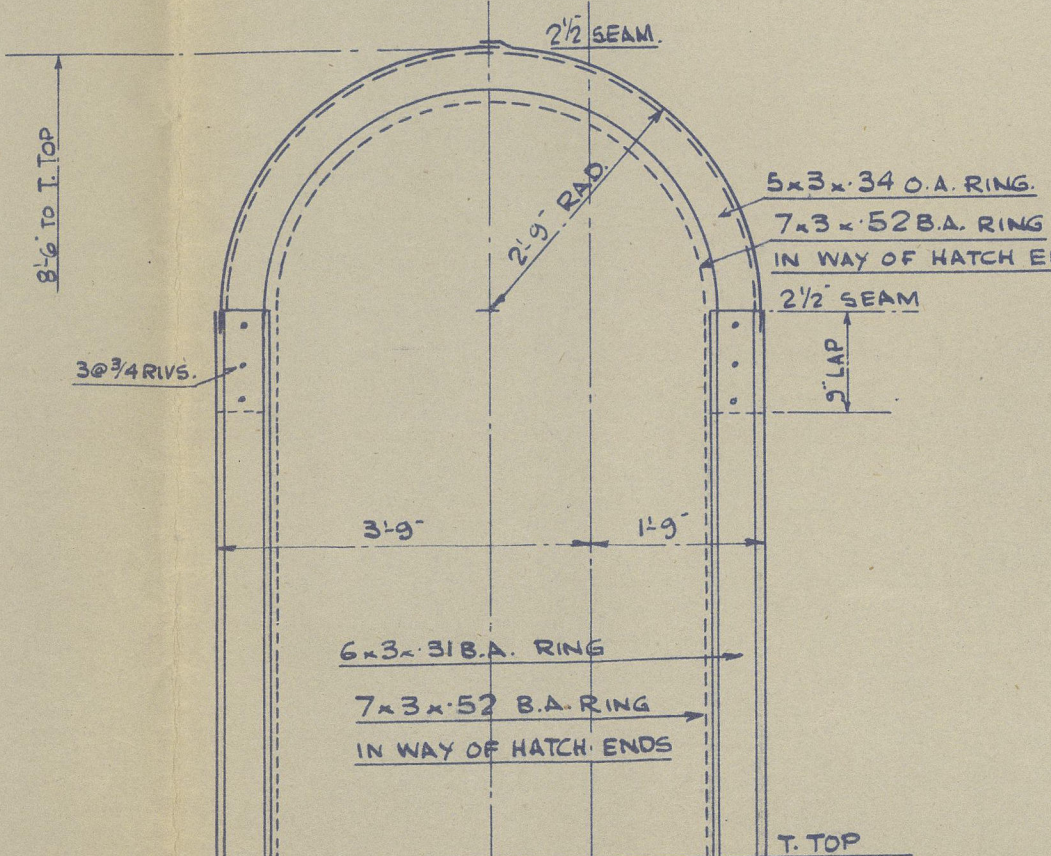
KEEL BUTT



CENTRE GIRDER BUTT



TANK TOP BUTT



SHAFT TUNNEL



SHORT BROS. LTD.  
SHIP BUILDERS.  
SUNDERLAND

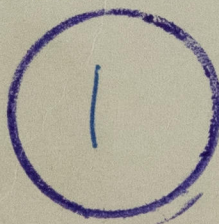


Callis ★

Messrs. Short Brothers  
Yard no 506  
Midship Section

lot.

RECORDS DEPT.  
LONDON



© 2020

Lloyd's Register  
Foundation

002620-002630-0167