

APR 17 1939

Index No. 21578
(For London Office only).

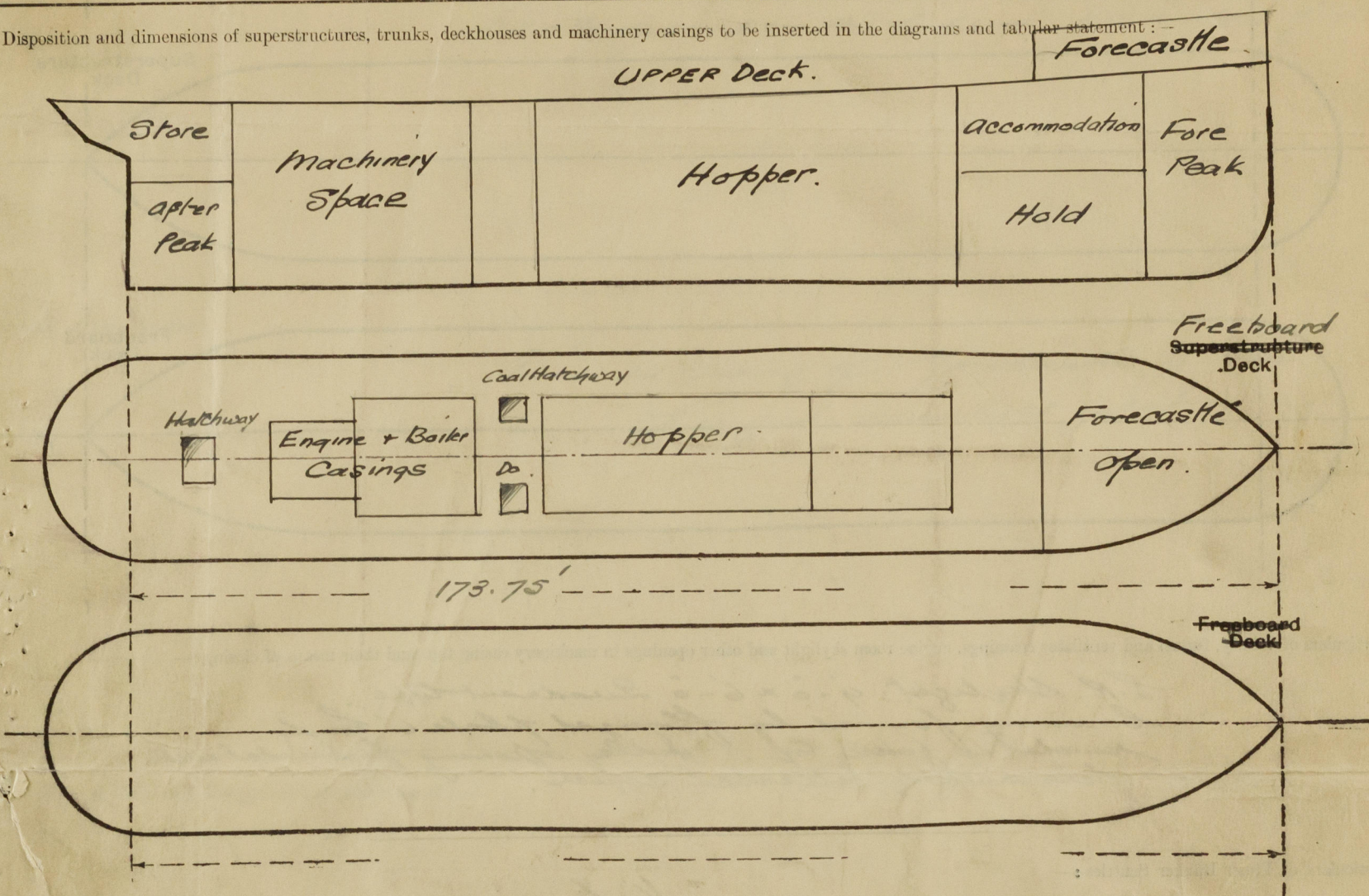
Lloyd's Register of Shipping.

SURVEYS FOR FREEBOARD.

(CONDITIONS OF ASSIGNMENT.)

Ship's Name "Foremost 17" Port of Survey Southampton
 Official Number 132542 Surveyor's Signature A. Howden
 Nationality and Port of Registry British. London Date of Survey March - April 1939

Disposition and dimensions of superstructures, trunks, deckhouses and machinery casings to be inserted in the diagrams and tabular statement:-



Particulars of Superstructures, Trunks, Casings, Deckhouses.

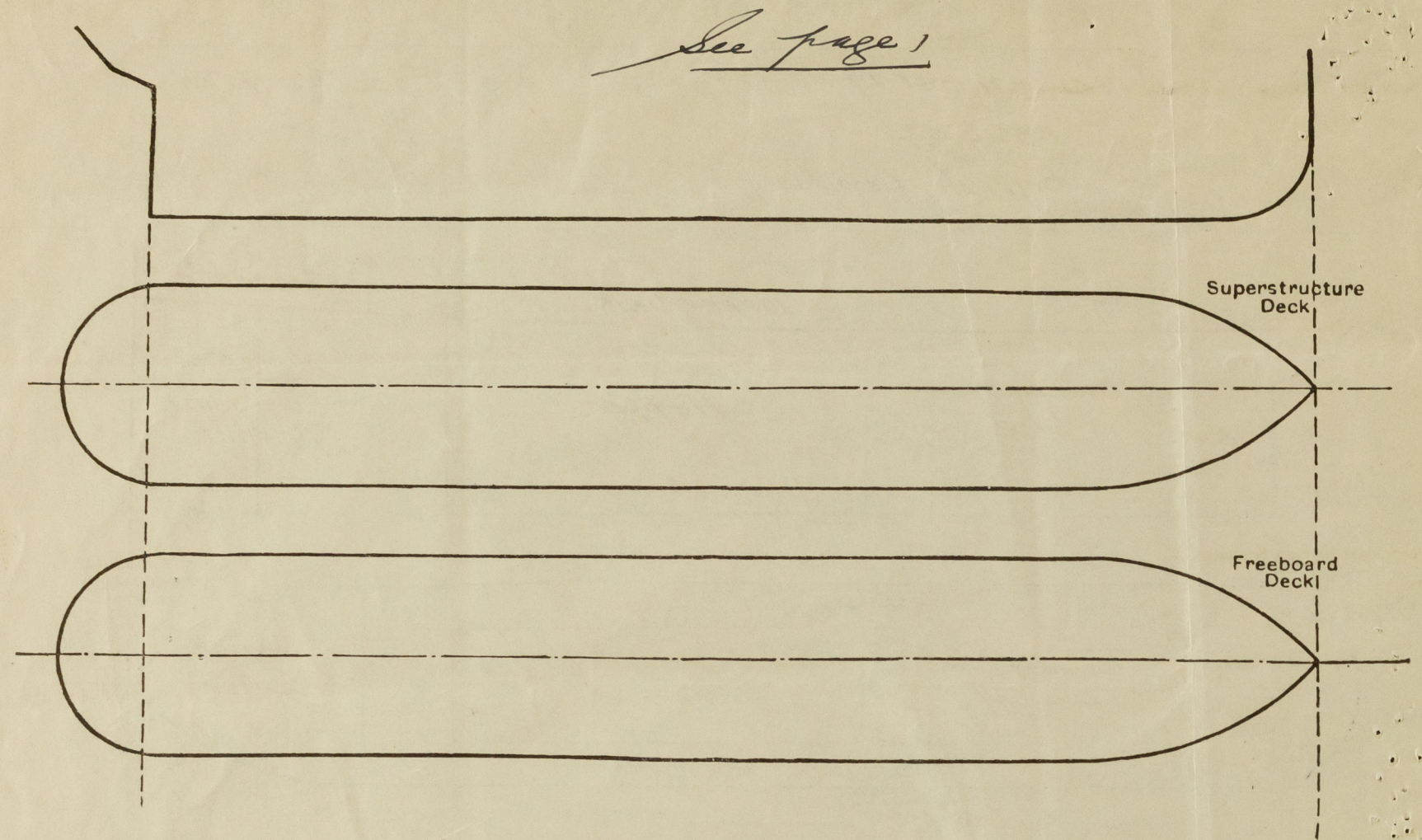
	Coaming	Plating	Stiffeners	Spacing	End Attachments of Stiffeners	Size of Openings	Height of Sills	Height of Casings
Poop Bulkhead ...								
Raised Quarter Deck Bulkhead ...								
Bridge, After Bulkhead ...								
Bridge, Forward Bulkhead ...								
Forecastle Bulkhead ...	<i>Open.</i>							
Trunk, Aft ...								
Trunk, Forward ...								
Exposed Machinery Casings on Freeboard or Raised Quarter Decks	<i>Deck 1/4"</i>	<i>1/4"</i>	<i>3 1/2 x 2 1/2 x 5/16</i>	<i>33"</i>	<i>Bracket</i>	<i>4'-6" x 2'-0"</i>	<i>18"</i>	<i>6'-6"</i>
Exposed Machinery Casings on Superstructure Decks ...								
Machinery Casings within Superstructures not fitted with Class I Closing Appliances ...								
Deckhouses on Flush Deck Ships ...								

Particulars of Closing Appliances (state if capable of being manipulated from both sides).

Poop Bulkhead ...	
Raised Quarter Deck Bulkhead ...	
Bridge, After Bulkhead ...	
Bridge, Forward Bulkhead ...	
Forecastle Bulkhead ...	<i>Open.</i>
Exposed Machinery Casings on Freeboard or Raised Quarter Decks ...	<i>Hinged steel door operated from both sides.</i>
Exposed Machinery Casings on Superstructure Decks ...	
Machinery Casings within Superstructures not fitted with Class I Closing Appliances ...	
Deckhouses on Flush Deck Ships ...	

PARTICULARS OF PROTECTION TO OPENINGS, ETC.

The following diagrams should be used to indicate the positions of cargo and coaling hatchways, gangway, cargo and coaling ports, ventilators, companionways, etc., which would affect the seaworthiness of the ship:—



Particulars of fiddle, funnel and ventilator coamings, engine room skylight and other openings in machinery casing tops and their means of closing:—

*E.R. Skylight 9'-0" x 6'-0" Quadrant type.
Coaming formed by flanged plate 6" high
riveted to fiddle top. Fiddle opening furnished with
permanently attached covers.*

Particulars of Flush Bunker Scuttles:—

Nil.

Particulars of Companionways:—

*Two of steel. Coaming 24" high - to accommodation
forward. Steel hinged doors 4'-0" x 7'-11" operated
from both sides.*

Particulars of Ventilators in exposed positions on freeboard and superstructure decks:—

On Forecastle Deck:— 1- 8" dia - 36" high x 1/4"
On Freeboard Deck
*Forward of Hopper Well:— 4 (2 P & 2 S) mushroom vent 6" x 8" x 1/4" to accm.
2 (1 P & 1 S) 12" dia x 36" x 1/4" to fore hold
1 Port 10" dia x 36" x 1/4" to accm.
1 Starboard 8" " x 36" x 1/4" "*
*Aft of Hopper Well:— 4 (2 P & 2 S) G.N type 4" dia - 10" high to bunkers
to after peak*
On Fiddle Top 2 (1 P & 1 S) 30" dia x 48" x 3/16 to Boiler Room
On E.R. Casing 2 (1 P & 1 S) 18" " x 33" x 3/16 to Engine Room
Efficient closing appliances provided

Particulars of Air Pipes in exposed positions on freeboard, raised quarter, or superstructure decks:—

*S.N. air pipes 4 1/2" - 16" high (Casing)
Efficient closing appliances provided*

Particulars of Gangway Cargo and Coaling Ports:—

Nil.

Particulars of Scuppers and Sanitary Discharge Pipes:—

*Sanitary discharges 4" pipe with storm valves,
in way of forecastle.
Beak scuppers 4" pipe - no valves fitted*

Particulars of Side Scuttles:—

*Two in way of forecastle 8" dia.
Largel decklight fitted*

Vertical distance of Sill of lowest Side Scuttle above top of keel

None below freeboard deck

Particulars of Guard Rails:—

*Shanctions 3" x 1 1/2" round iron with
2 eyes for 1/2" chain.*

Particulars of Gangways, Lifelines, etc.:—

*The hoppers are beam forms a permanent
gangway with rails across the hopper well*

Particulars of Freeing Arrangements.						
	Length of Bulwark	Height of Bulwark	Size of Freeing Ports	Number each side	Area each side	Rule area each side
After Well	67'-10"	36"	1'-6" x 3'-0"	3	13.5 sq ft	13.56 sq ft
Forward Well	30'-0"	33"	1'-6" x 3'-0"	2	9.0 sq ft	9.5 sq ft
State position of each freeing port (After Well:— 2'-3" - 29'-0" - 49'-6" from aft hopper bulkhead and A. position and height above deck edge) (Forward Well:— 2'-0" - 10'-0" from hopper bulkhead Bulk)						
State whether the freeing ports are fitted with shutters, bars, or rails, and give particulars of such:—						
Additional area where sheer is less than standard.						

PARTICULARS OF PROTECTION TO OPENINGS, ETC.

HATCHWAYS ON FREEBOARD AND SUPERSTRUCTURE DECKS.									
Description of Hatchway			<i>Batten Stone</i>		<i>Rubber Hatchway</i>				
Dimensions of Hatchway			<i>2'-0" x 3'-0"</i>		<i>3'-6" x 4'-0"</i>				
COAMINGS	{	Height above Deck ...	<i>18"</i>		<i>24"</i>				
		Thickness { Sides ...	<i>5/16"</i>		<i>3/8"</i>				
		Stiffeners ...							
		Brackets, Stays ...							
HATCH BEAMS	{	Number							
		Spacing							
		Scantling and Sketch ...	<i>nil</i>		<i>nil</i>				
		Bearing Surface							
FORE AND AFTERS	{	Number							
		Spacing							
		Unsupported Lengths ...	<i>nil</i>		<i>nil</i>				
		Scantling* and Sketch ...							
HATCH COVERS	{	Material	<i>Wood</i>		<i>Wood</i>				
		Thickness	<i>3"</i>		<i>3"</i>				
		How fitted	<i>Barling</i>		<i>Barling</i>				
		Bearing Surface	<i>3"</i>		<i>3"</i>				
Spacing of Cleats			<i>12"</i>		<i>26"</i>				
Number of Tarpaulins			<i>2</i>		<i>2</i>				
<p>*Are wood fore and afters steel shod at all bearing surfaces? <i>nil yes.</i></p> <p>Are battens and wedges efficient and in good condition? <i>yes.</i></p> <p>Are tarpaulins in good condition and in accordance with rule requirements? <i>yes.</i></p> <p>Are lashings provided in accordance with rule requirements? <i>yes.</i></p>									

Particulars of any special features:—

Endorsement at first survey and at surveys for renewal of Certificate:—

The fittings and appliances are in accordance with the particulars shown on this form (or as now modified) and are in good condition.

J. H. Lowden

