

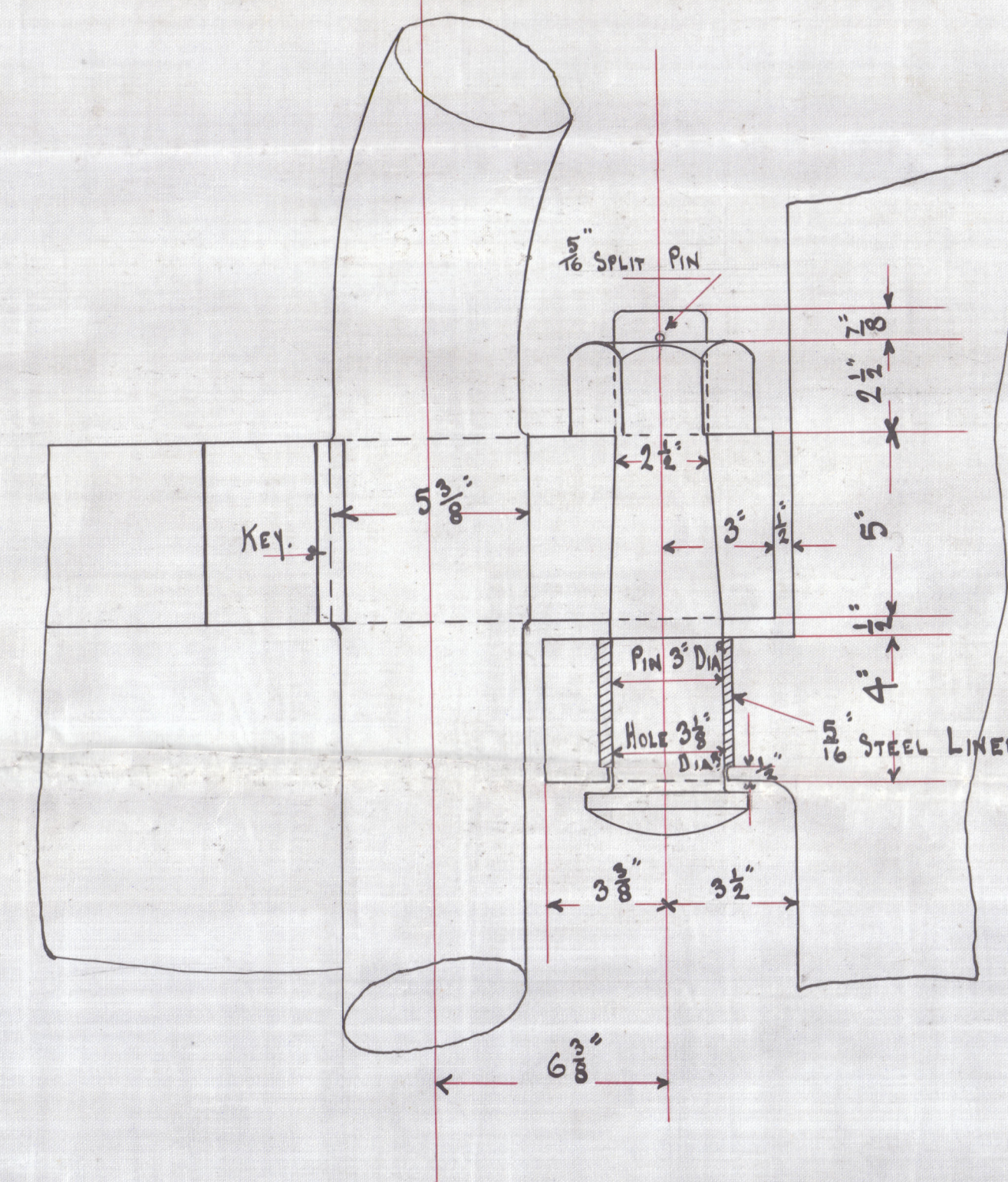
Approved  
See London Letter  
Dated 19 Nov 1910  
E.T.

# STERNPOST & RUDDER SINGLE SCREW BARGES NOS 197-203.

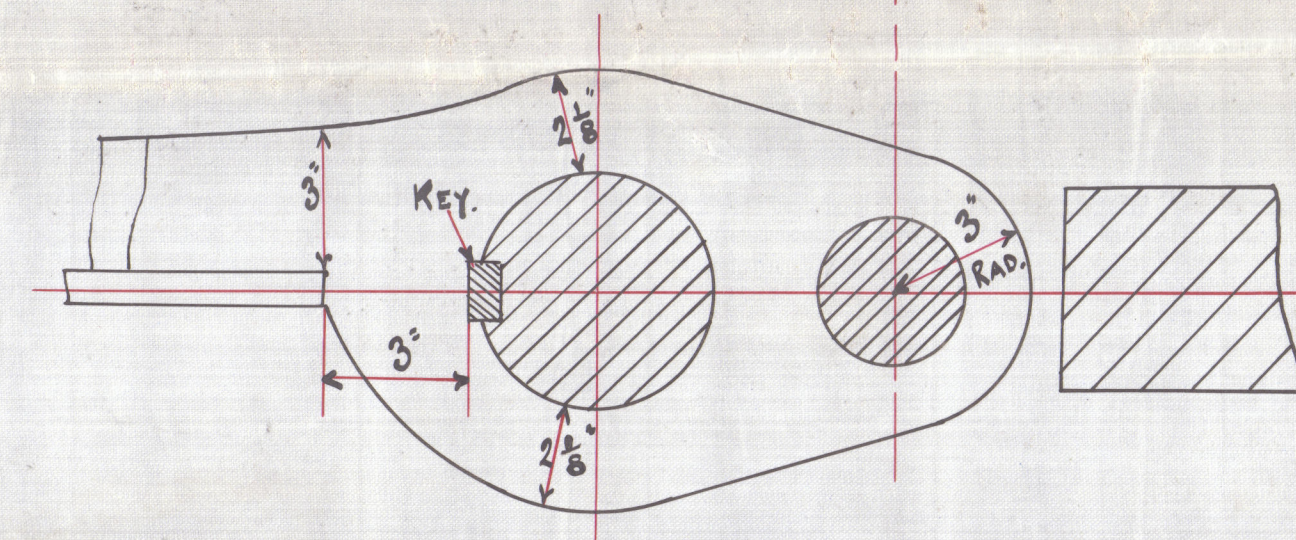
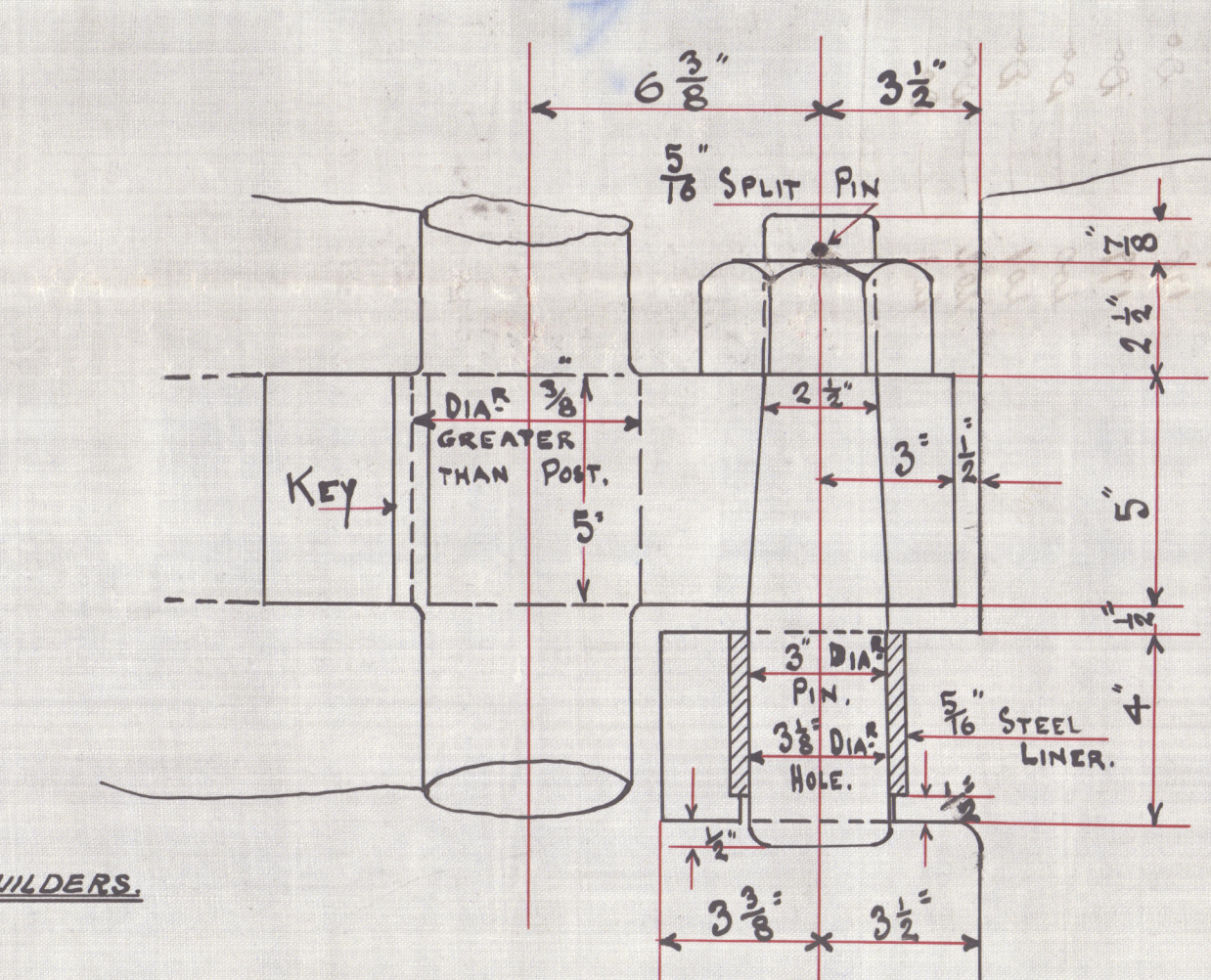
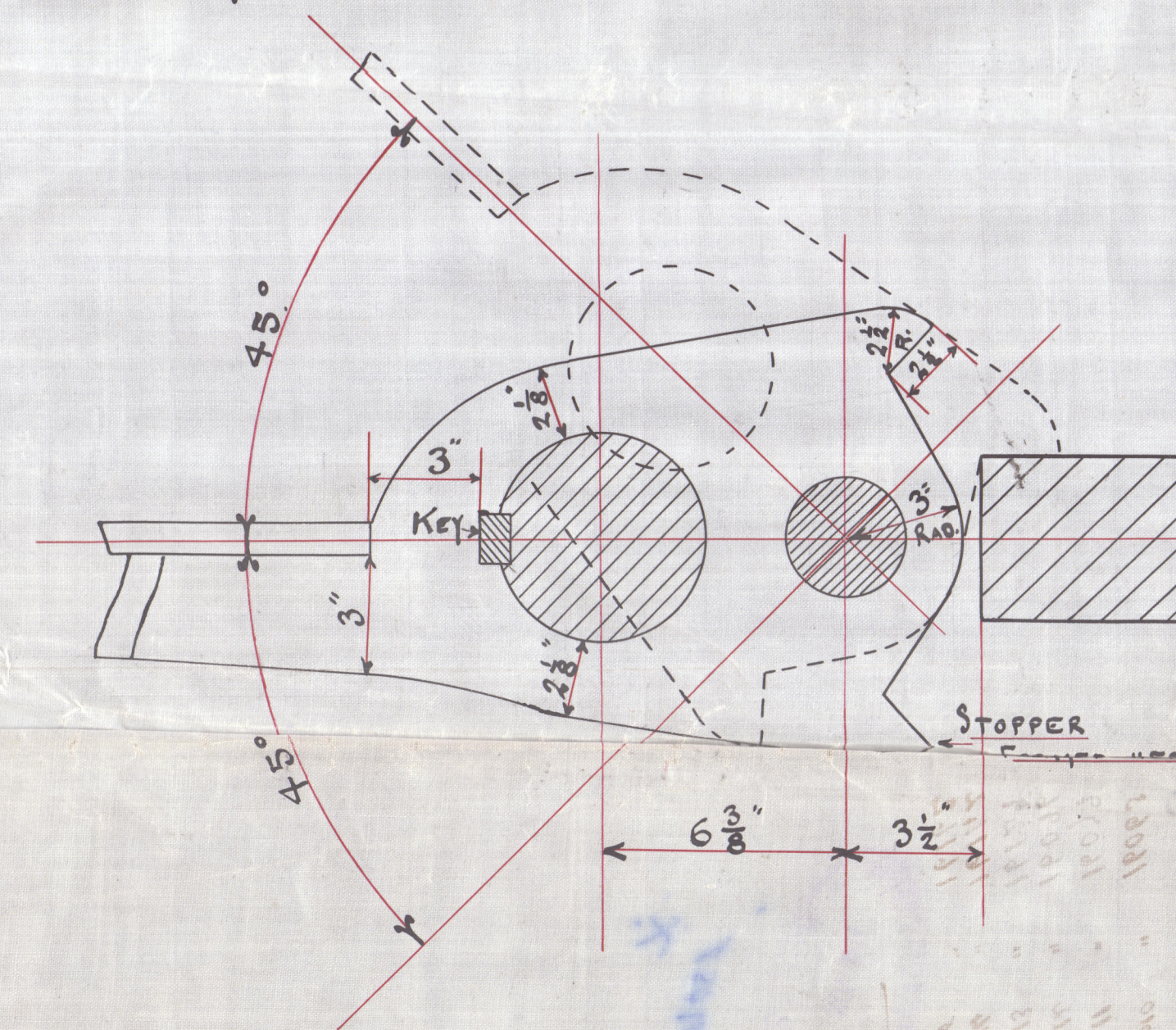
7 OFF.

Scale: 1" = 3" = 1 FOOT.

STERNPOST OF BEST FORGED IRON.  
RUDDER FRAME OF BEST FORGED IRON.



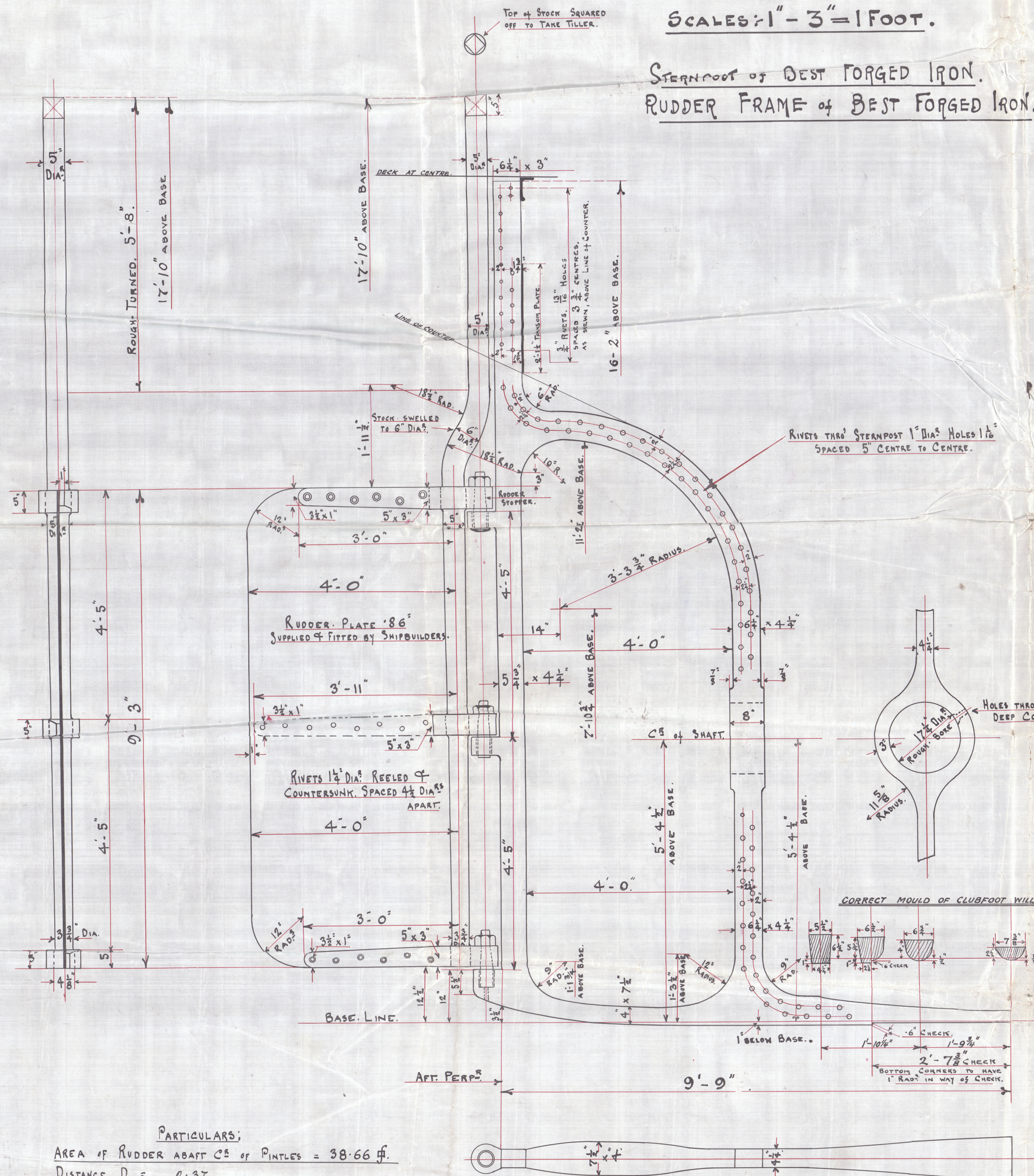
DETAIL of TOP PINTLE & GUDGEON WITH RUDDER STOPPER.



DETAIL of MIDDLE PINTLE & GUDGEON.

FERGUSON BROS.  
SHIPBUILDERS & ENGINEERS.

PORT-GLASGOW. 15 November '10



PARTICULARS:  
AREA OF RUDDER ABAFT C<sub>B</sub> OF PINTLES = 38.66 sq. ft.  
DISTANCE D = 2.37  
A x D = 91.62  
SPEED OF SHIP IN KNOTS = 10 1/2.  
LOYDS NUMERALS 45.458 & 7898.32.  
TO CLASS 100 A1\* HOPPER BARGE FOR CHANNEL PURPOSES







LR

© 2020

FERGUSON BROTHERS, PORT-GLASGOW.

ENCLOSURE TO

Lloyd's Register  
Foundation  
*Lloyds Office. Greenock.*