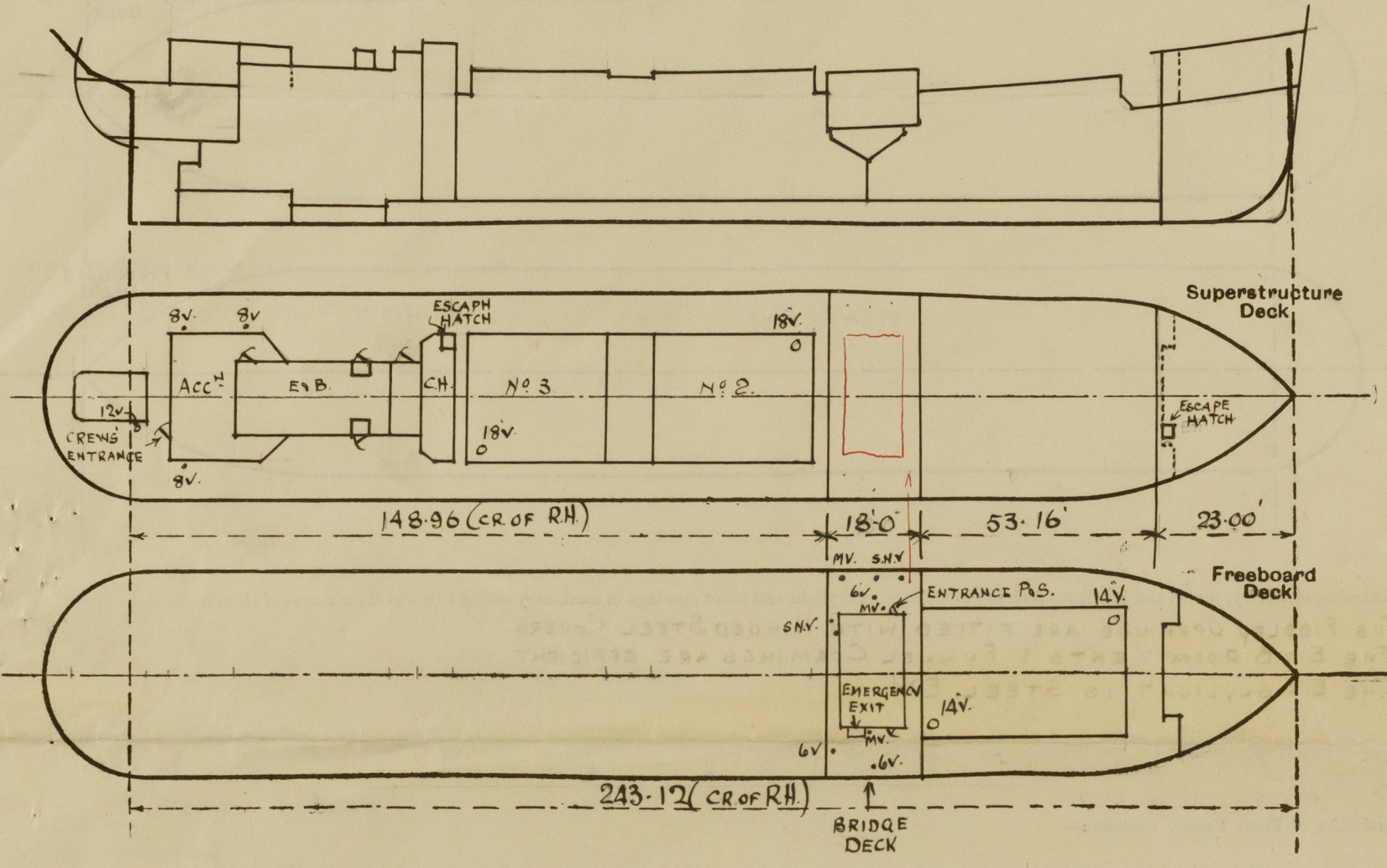


Lloyd's Register of Shipping.  
SURVEYS FOR FREEBOARD.  
(CONDITIONS OF ASSIGNMENT.)

Nº 33469

Ship's Name FIRE DOG Port of Survey SUNDERLAND  
Official Number 168316 Surveyor's Signature P. H. Roudall  
Nationality and Port of Registry BRITISH - LONDON Date of Survey WHILST BUILDING

Disposition and dimensions of superstructures, trunks, deckhouses and machinery casings to be inserted in the diagrams and tabular statement : --



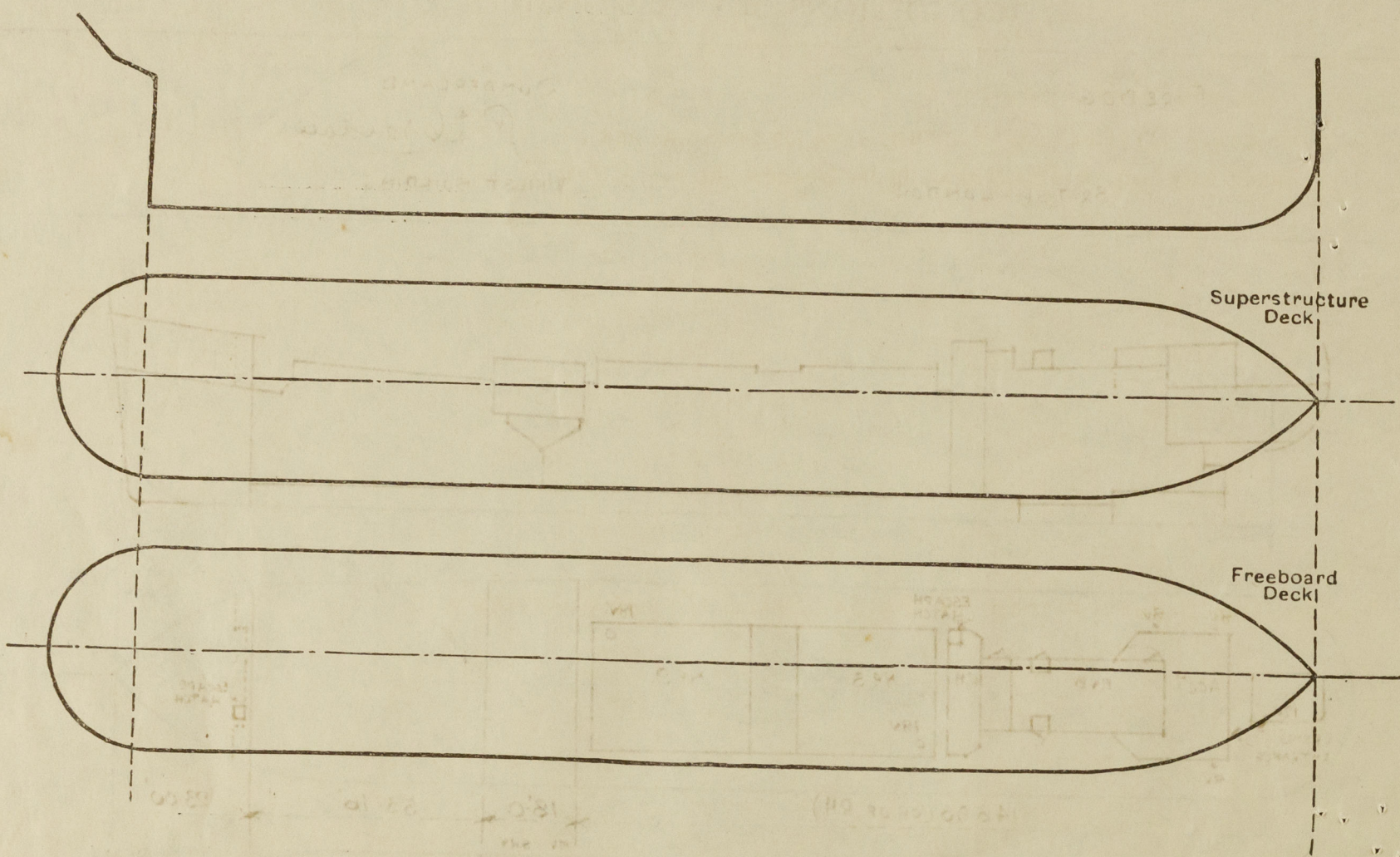
Particulars of Superstructures, Trunks, Casings, Deckhouses.								
	Coaming	Plating	Stiffeners	Spacing	End Attachments of Stiffeners	Size of Openings	Height of Sills	Height of Casings
Poop Bulkhead ... ..	-							
Raised Quarter Deck Bulkhead ...	-							
Bridge, After Bulkhead ... ..	-	30"	3 x 3 x 5/16 ✓	31" ✓	RIVETING CLOSED	INTACT.	-	7'-0" ✓
Bridge, Forward Bulkhead ... ..	-	34"	6 x 3 1/2 x 5/16 BA	31"	LUQS.	INTACT.	-	7'-0" ✓
Forecastle Bulkhead ... ..	-	25"	3 x 3 x 3/8	27"	NIL.	2) 4'-1" x 37" 1) 4'-0" x 21"	18"	6'-0" ✓
Trunk, Aft ... ..	-							
Trunk, Forward ... ..	-							
Exposed Machinery Casings on Freeboard or Raised Quarter Decks ...	32"	32"	3 x 3 x 5/16	30"	NIL.	2 @ 4'-6" x 21" 2 @ 4'-6" x 23"	21"	3'-0" 97'-0" ✓
Exposed Machinery Casings on Superstructure Decks ... ..	-							
Machinery Casings within Superstructures not fitted with Class I Closing Appliances ... ..	-							
Deckhouses on Flush Deck Ships ...	-							

Particulars of Closing Appliances (state if capable of being manipulated from both sides).	
Poop Bulkhead ... ..	✓
Raised Quarter Deck Bulkhead ...	✓ Intact.
Bridge, After Bulkhead ... ..	✓ INTACT.
Bridge, Forward Bulkhead ... ..	✓ INTACT.
Forecastle Bulkhead ... ..	✓ 2) F.H.R. CHANNELS & 27/8 WEATHER BOARDS.
Exposed Machinery Casings on Freeboard or Raised Quarter Decks ...	✓ HINGED STEEL DOORS - OPERATING EITHER SIDE.
Exposed Machinery Casings on Superstructure Decks ... ..	✓
Machinery Casings within Superstructures not fitted with Class I Closing Appliances ... ..	✓
Deckhouses on Flush Deck Ships ...	✓



## PARTICULARS OF PROTECTION TO OPENINGS, ETC.

The following diagrams should be used to indicate the positions of cargo and coaling hatchways, gangway, cargo and coaling ports, ventilators, companionways, etc., which would affect the seaworthiness of the ship:—



Particulars of fiddle, funnel and ventilator coamings, engine room skylight and other openings in machinery casing tops and their means of closing:

THE FIDDLEY OPENINGS ARE FITTED WITH HINGED STEEL COVERS.

THE E. & B. ROOM VENTS & FUNNEL COAMINGS ARE EFFICIENT.

THE E.R. SKYLIGHT IS STEEL E.W.

Particulars of Flush Bunker Scuttles :—

NIL

Particulars of Companionways:— R.Q.DK. ENTRANCE TO CREW'S QUARTERS BELOW R.Q.D. ENCLOSED IN AFTER END OF CASING WITH HINGED TEAK DOOR-OPERATING EITHER SIDE. OPENING 4'6"x24" SILL 21" ✓  
ESCAPE HATCH TO NO 3 (AFTER) HOLD SITUATED IN CASING 9 PROTECTED BY HINGED STEEL DOOR-OPERATING EITHER SIDE. OPENING 3'7"x21" SILL 18" ✓  
BRIDGE DK. ENTRANCE TO BRIDGE ACCOM<sup>ON</sup> PROTECTED BY HINGED TEAK DOOR-OPERATING EITHER SIDE. OPENING 4'10"x23" SILL 9½" ✓

Particulars of Ventilators in exposed positions on freeboard and superstructure decks:—

FREBB<sup>d</sup> DK:- 2 @ ADIA COAMINGS 15' x 40' CON HATCHES) CLOSING W/T STEEL COVERS.  
R.Q. DECK:- 2 @ 18" " " 15' x 40' " " " "  
              1 @ 12" " " 36' x 36' " " " "  
              3 @ 8" " " 36' x 32' " " " "  
BRIDGE DK:- 3 @ 6" " " 36' x 30' ✓ " " " " " "

4 SWAN NECK 5 DIA X 9 TO MOUTH  
3 MUSHROOM 6" X 6" ✓ THE VENTILATOR

THE VENTILATORS ARE IN ACCORDANCE  
WITH RULE REQUIREMENTS ✓

Particulars of Air Pipes in exposed positions on freeboard, raised quarter, or superstructure decks:—

FO'CLE DR: 2@ 5" DIA 9 2@ 4 1/2" DIA X 18 TO MOUTH.  
FREEBOARD: 3@ 1" 2@ 3" 2@ 1"

FREEB<sup>D</sup> DK: 2@ 4" " " 2@ 3" " x 36" " "

1 @ 14" LED THRO' BRIDGE FRONT X 18" TO MOUTH (ABOVE HATCH)

R.Q. D.K.: 2 @ 5" DIA, 2 @ 4½" DIA, 1 @ 4" DIA, 3 @ 3" DIA, 2 @ 2½" DIA & 1 @ 2" DIA x 18" TO MOUTH.

CLOSING - Canvas Covers and strong 30" wire mesh.  
Wood Plugs.

Particulars of Gangway Cargo and Coaling Ports:—

Al 12

Particulars of Scuppers and Sanitary Discharge Pipes:—

ALL OVER-BOARD DISCHARGES FITTED WITH STORM VALVES.

THERE ARE NO DISCHARGES FROM SPACES BELOW R.O.D.K

Particulars of Side Scuttles :—

HINGED DEAD LIGHTS FITTED IN BRIDGE SPACE, CREWS' QUARTERS AFT.

Vertical distance of Sill of lowest Side Scuttle above top of keel NONE BELOW FREEB<sup>d</sup> DK.

Particulars of Guard Rails :—

FOCLE DK:- 2 TIER RAILS 36" HIGH. STANCHIONS SPACED ABOUT 4' 3" APART.  
FREEB<sup>d</sup> DK:- BULWARKS 4'-0" HIGH. STANCHIONS 5"x3"x5/16" BA " " 4'-6" " RAIL 6"x3 1/2"x5/16" BA.

Q.Q. DECK:-	"	3'-0"	"	"	"	"	
BRIDGE DK:-	"	4'-0"	"	EFFICIENTLY SUPPORTED			

Particulars of Gangways, Lifelines, etc. :—

LIFE-LINE FITTED ACROSS HATCH ON TREEB<sup>2</sup> DECK.

Particulars of Freeing Arrangements.						
	Length of Bulwark	Height of Bulwark	Size of Freeing Ports	Number each side	Area each side	Rule area each side
RQDW After Well ... ..	148.96	3' 0"	$\left. \begin{matrix} 20.25 \\ 13.50 \\ 6.75 \\ 12.00 \end{matrix} \right\} \times .62'$	4	32.55 $\phi$	29.79
Forward Well ... ..	53.16	4' 0"	$\left. \begin{matrix} 13.33 \\ 12.50 \end{matrix} \right\} \times .62''$	2	16.01 $\phi$	10.63

State position of each freeing port ... <sup>R.O.D.K.</sup> ~~Also Well~~ — 13' 6", 47' 3", 74' 4" & 129' 9" FROM BRIDGE END TO FORE END OF OPENING.

(F. and A. position and height above deck edge) { Forward Well:— 11' 0" 9 37' 10" " Fo'le Front " " " " ALL 10" ABOVE DECK.

State whether the freeing ports are fitted with shutters, bars, or rails, and give particulars of such:—SLOTS ONLY.

Additional area where sheer is less than standard.

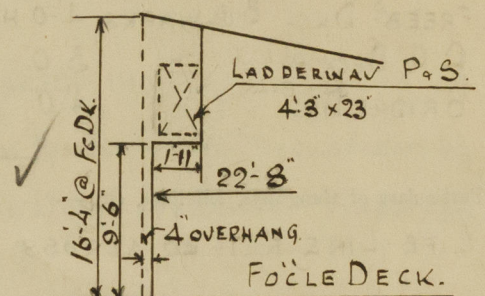
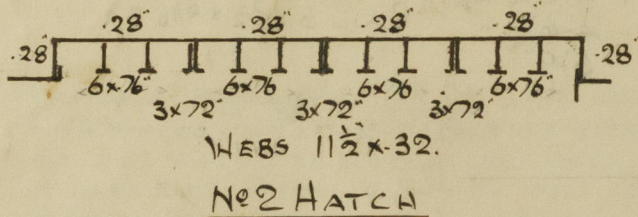
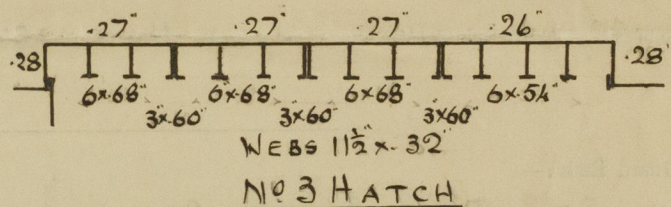
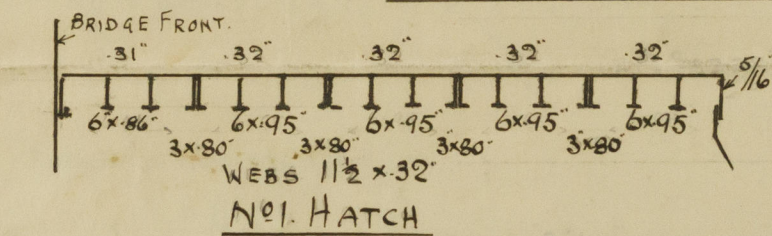


# PARTICULARS OF PROTECTION TO OPENINGS, ETC.

		HATCHWAYS ON FREEBOARD AND SUPERSTRUCTURE DECKS.						
		FB <sup>2</sup> DK.	← R.Q. DECK →		FOCLE DK.	BRIDGE DK.		
Description of Hatchway	...	No. 1.	No. 2.	No. 3.	CASING COAL HATCH.	ESCAPE HATCH.	EMERGENCY EXIT HATCH.	
Dimensions of Hatchway	...	45'2" x 25'8"	35'2" x 25'8"	35'2" x 25'8"	5'6" x 21'6"	1'10" x 2'9"	2'3" x 2'1"	
COAMINGS	Height above Deck	45"	44"	44"	8'0"	30"	27"	
	Thickness	44"	44"	44"	30"	30"	26"	
	Sides	F44 A. 34	F44 A. 38	F38 A. 44	30"	30"	26"	
	Ends	12 x 32 x 45 BA.	12 x 32 x 45 BA.	12 x 32 x 45 BA.	5 x 3 x 34 VERTICAL	-	-	
HATCH BEAMS	Stiffeners	12 x 32 x 45 BA.	12 x 32 x 45 BA.	12 x 32 x 45 BA.	5 x 3 x 34 VERTICAL	-	-	
	Brackets, Stays	18 x 34	18 x 34	18 x 34	18 x 34	-	-	
	Number	14	11	12	-	-	-	
	Spacing	33"-36"	34"-34"	28"-33"	-	-	-	
FORE AND AFTERS	Scantling and Sketch	11 1/2" x 32"	11 1/2" x 32"	11 1/2" x 32"	-	-	-	
	Bearing Surface	ALSO SEE SKETCHES.	✓	-	-	-	-	
	Number	-	-	-	-	-	-	
	Spacing	-	-	-	-	-	-	
HATCH COVERS	Material	STEEL	STEEL	STEEL	W.P.	W/T STEEL	-	
	Thickness	31"-32"	28"	26"-27"	2 1/2"	COVERS.	-	
	How fitted	T.	T.	T.	F&A.	-	-	
	Bearing Surface	SEE SKETCH.	-	-	4 1/2"	-	-	
Spacing of Cleats	...	39"	42"	42"	24"	-	-	
Number of Tarpaulins	...	-	-	-	2.	-	-	

\*Are wood fore and afters steel shod at all bearing surfaces? ✓  
 Are battens and wedges efficient and in good condition? AT CASING COAL HATCH - YES ✓  
 Are tarpaulins in good condition and in accordance with rule requirements? DO DO DO ✓  
 Are lashings provided in accordance with rule requirements? ✓

Particulars of any special features:— MAC GREGORS STEEL HATCH COVERS. ✓



Endorsement at first survey and at surveys for renewal of Certificate:—

The fittings and appliances are in accordance with the particulars shown on this form (or as now modified) and are in good condition.

*The Scantlings of the Mac Gregor Steel hatch covers are in accordance with the approved plans.*

Forecastle. 23'-0"  
 2'-3"  
 20'-9" = 20.75'  
 + 1.12  
 21.87  
 1.92 x 9.5' / 16.33  
 Overhang = 4" = .33'

*Am T.*



© 2020

Lloyd's Register Foundation