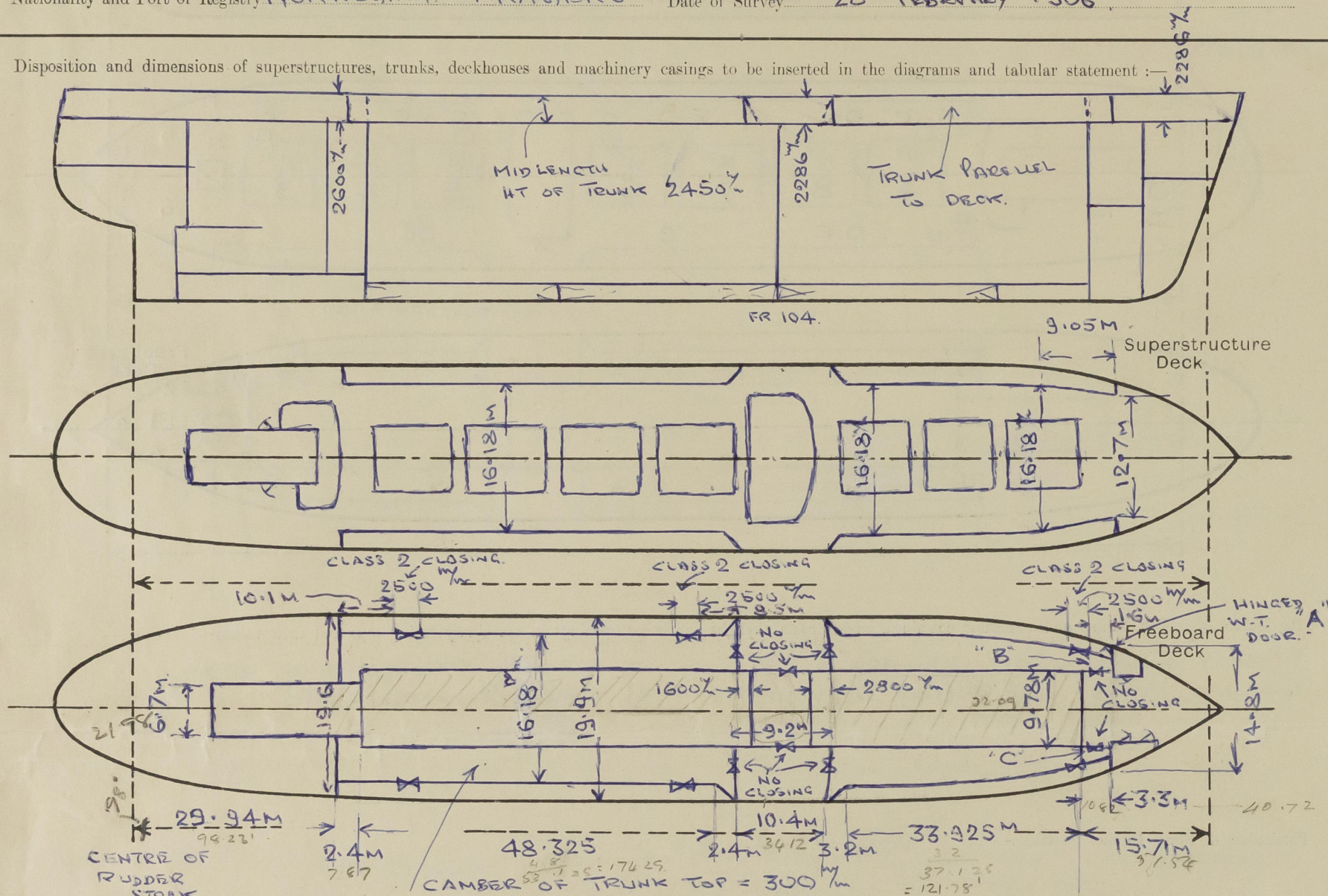


Lloyd's Register of Shipping.  
SURVEYS FOR FREEBOARD.  
(CONDITIONS OF ASSIGNMENT.)

Ship's Name M. ORE CARRIER ASTURIA.  
GROSS TONS 9999. SIGNAL LETTERS  
Official Number NETT 5875 — L.H.N.G.  
Nationality and Port of Registry NORWEGIAN - KRAGERO

Port of Survey ROUEN.  
Surveyor's Signature Jas. Cunningham  
Date of Survey 28 FEBRUARY 1956

Disposition and dimensions of superstructures, trunks, deckhouses and machinery casings to be inserted in the diagrams and tabular statement :



### Particulars of Superstructures, Trunks, Casings, Deckhouses.

	Coaming $\frac{w}{m}$	Plating $\frac{w}{m}$	Stiffeners	Spacing	End Attachments of Stiffeners	Size of Openings	Height of Sills	Height of Casings
Poop Bulkhead ... ..	11 ✓	11 ✓	250x90x10 <sup>B.A</sup>	610 ✓	BRACKETED ✓	NONE		2340
<del>Raised Quarter Deck Bulkhead</del> ...								
Bridge, After Bulkhead ... ..	10 ✓	9 ✓	180x75x9 <sup>BA</sup>	810 ✓	LUGGED ✓	1 PRS 1200x900	460 ✓	2286 ✓
Bridge, Forward Bulkhead ... ..	11 ✓	11 ✓	230x90x11.5 <sup>BA</sup>	810 ✓	BRACKETED ✓	1 PRS 1450x710	460 ✓	2286 ✓
Forecastle Bulkhead... ..	9 ✓	9 ✓	180x75x9 <sup>B.A</sup>	710 ✓	LUGGED ✓	"A" 1600x630 "B" 1700x1000 "C" 1700x1000	320 300 300	2286
Trunk; Aft ... ..	15 ✓	15 ✓	LONGIT. 200x12 B.P. WITH 400x12 PLATE TRANSVERSE 1600 <sup>BA</sup> APART. ✓	800 ✓	2 PRS 1000x2500	430	2600	2286 TO
Trunk, Forward ... ..	15 ✓	15 ✓						2286
Exposed Machinery Casings on Free- board or <del>Raised Quarter</del> Decks ...	11 ✓	11 ✓	250x90x11 <sup>B.A</sup>	660 ✓	BRACKETED & LUGGED ✓	NONE	-	2340
Exposed Machinery Casings on Super- structure Decks ... ..	9.5 ✓	8.5 ✓	75x75x7.5 <sup>BA</sup>	800 ✓	BRACKETED AT TOP ✓	1 PRS 1480x710 ✓	500 ✓	3435 ✓
Machinery Casings within Superstructures not fitted with Class I Closing Appliances ... ..								
Deckhouses on Flush Deck Ships ...								

Particulars of Closing Appliances (state if capable of being manipulated from both sides).

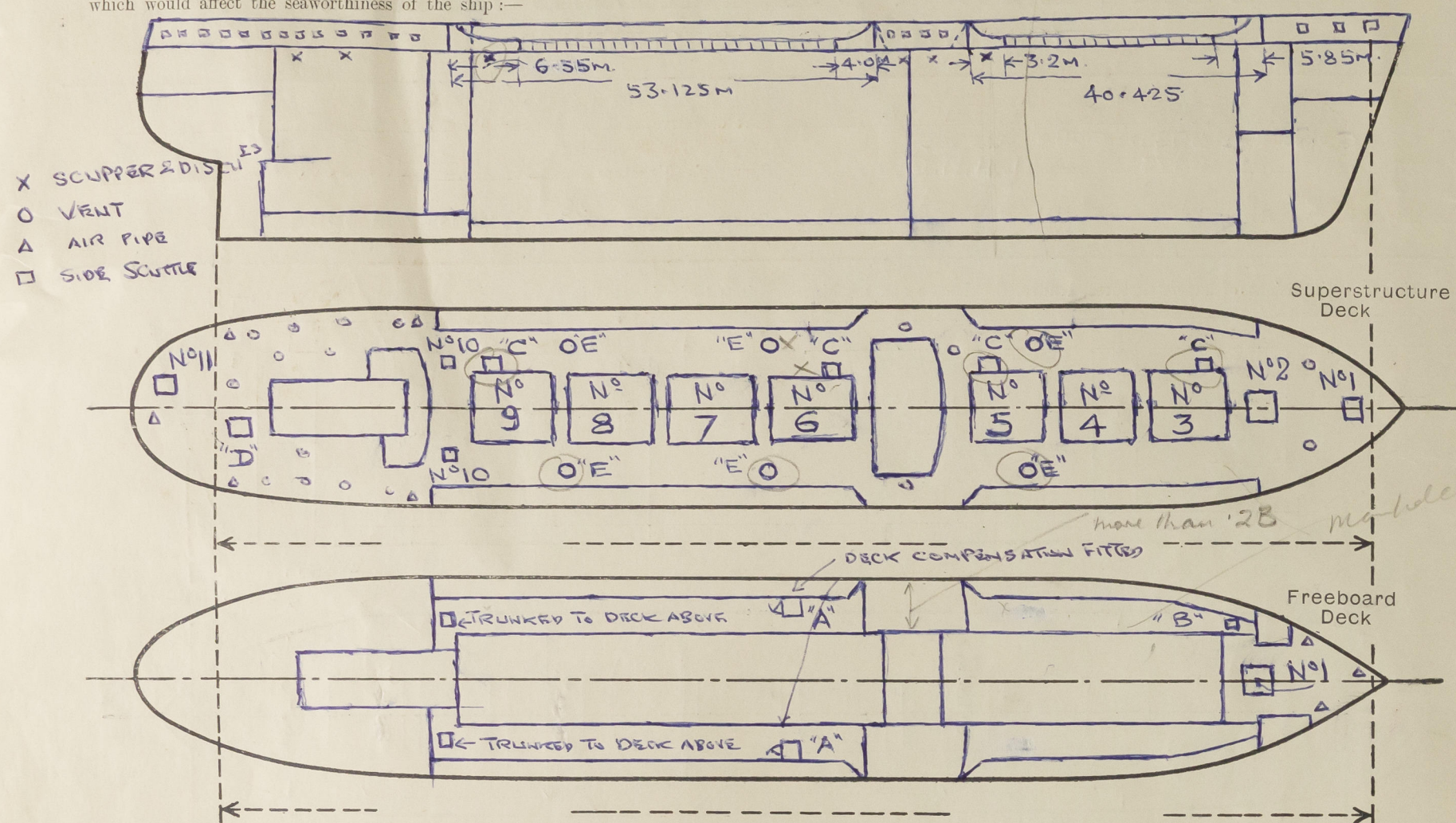
Poop Bulkhead ... ..	INTACT. ✓
Raised Quarter Deck Bulkhead ...	—
Bridge, After Bulkhead ... ..	NO CLOSING. } Protected by trunk with Class 2 closing appliances
Bridge, Forward Bulkhead ... ..	NO CLOSING. } "A" HINGED STEEL WATER TIGHT DOOR OPERATED BOTH SIDES (CLASS I)
Forecastle Bulkhead ... ..	"B" & "C" NO CLOSING - as for bridge bulkheads.
Exposed Machinery Casings on Free-board or Raised Quarter Decks ...	INTACT. ✓
Exposed Machinery Casings on Super-structure Decks ... ..	HINGED STEEL DOORS OPERATED BOTH SIDES (CLASS I) ✓
Machinery Casings within Superstructures not fitted with Class I Closing Appliances ... ..	—
TRUNK FORWARD & AFT Deckhouses on Flush Deck Ships ...	85% <sup>min</sup> STORM BOARDS FULL HEIGHT IN WELDED CHANNELS (CLASS 2) ✓

AT ENDS & MID WIDTH



# PARTICULARS OF PROTECTION TO OPENINGS, ETC.

The following diagrams should be used to indicate the positions of cargo and coaling hatchways, gangway, cargo and coaling ports, ventilators, companionways, etc., which would affect the seaworthiness of the ship :-



Particulars of fiddle, funnel and ventilator coamings, engine room skylight and other openings in machinery casing tops and their means of closing :-

FIDDLEY, FUNNEL, VENT COAMINGS & E.R. SKYLIGHT STRONGLY CONSTRUCTED OF STEEL SKYLIGHT FITTED WITH HINGED STEEL FLAPS WITH STRONG BULSEYE LIGHTS

Particulars of Flush Bunker Scuttles :-

NONE

Particulars of Companionways :-

- "A" STRONG STEEL COMPANIONWAY ON UPPER DECK IN TRUNK TO MACHINERY PUMP ROOMS HINGED STEEL DOOR W.T. OPERATED BOTH SIDES 1500 X 600 SILL 300%
- "B" STRONG STEEL COMPANIONWAY ON UPPER DECK IN TRUNK TO FORWARD PUMP ROOM HINGED STEEL DOOR W.T. OPERATED BOTH SIDES 1500 X 600 SILL 400%
- "C" STRONG STEEL COMPANIONWAY ACCESS TO HOLDS FROM TRUNK TOP HINGED W.T. STEEL COVER WITH MUSHROOM VENT ON COVER. *Coaming height 600 mm*
- "D" STRONG STEEL SKYLIGHT ON POOP DECK TO ACCOMMODATION HINGED STEEL FLAP SECURED BY TONGUES HEIGHT ABOVE DECK 460%
- "E" STRONG STEEL COMPANIONWAYS ON TRUNK TOP ACCESS TO TRUNK HINGED STEEL COVER W.T. 550% DIA

Particulars of Ventilators in exposed positions on freeboard and superstructure decks :- HEIGHT 610% WITH MUSHROOM VENT ON COVER SCREW TOP

POOP DECK

- 18 - 200% DIA X 8% - 760% HIGH ✓
- 2 - 225% DIA X 10% - 760% HIGH ✓
- 7 - 250% DIA X 10% - 760% HIGH ✓
- 1 - 300% DIA X 10% - 760% HIGH ✓
- 2 - 375% DIA X 11% - 350% HIGH EFFICIENTLY STAYED ✓

WOOD PLUGS AND CANVAS COVERS PROVIDED

BRIDGE DECK

- 1 - 225% DIA X 10% - 760% HIGH ✓
- 2 - 300% DIA X 10% - 760% HIGH ✓

FORECASTLE DECK

- 2 - 300% DIA X 10% - 900% HIGH ✓

Particulars of Air Pipes in exposed positions on freeboard, raised quarter, or superstructure decks :-

FOCUS DECK

- 2 - 90% DIA. X 680% HIGH ✓
- 1 - 75% DIA X 680% HIGH ✓

OIL FUEL TANK AIR PIPES PROVIDED WITH WIRE GAUZE AND CANVAS COVERS REMINDER WITH WOOD PLUGS

FREEBOARD DECK - NON EXPOSED

POOP DECK

- 5 - 75% DIA X 500% HIGH ✓
- 2 - 90% DIA. X 500% HIGH ✓

Particulars of Gangway Cargo and Coaling Ports :-

NONE

Particulars of Scuppers and Sanitary Discharge Pipes :-

- 2 - 100% (P&S) SCUPPERS FROM UPPER DECK IN TRUNK L&O OVERBOARD BELOW FREEBOARD DECK WITH BRASS STORM VALVE AT SHIP'S SIDE ✓
- 1 - 100% DISCHARGE P&S FROM BRIDGE ACCOMMODATION L&O OVERBOARD BELOW FREEBOARD DECK WITH CAST STEEL NON-RETURN VALVE AT SHIP'S SIDE ✓
- 2 - 100% DISCHARGES P&S FROM POOP ACCOMMODATION L&O OVERBOARD BELOW FREEBOARD DECK WITH CAST STEEL NON-RETURN VALVE AT SHIP'S SIDE ✓

Particulars of Side Scuttles :-

ABOVE FREEBOARD DECK

- 3 - 250% DIA. GUN METAL SIDE SCUTTLES TO FORECASTLE P&S WITH HINGED STEEL DEADLIGHTS ✓
- 4 - 250% DIA GUN METAL SIDE SCUTTLES TO BRIDGE ACCOMMODATION P&S WITH HINGED STEEL DEADLIGHTS ✓
- 21 PORT SIDE 17 STARBOARD SIDE - 250% DIA GUNMETAL SIDE SCUTTLES TO POOP ACCOMMODATION WITH HINGED STEEL DEAD LIGHTS ✓

Vertical distance of Sill of lowest Side Scuttle above top of keel

NONE BELOW FREEBOARD DECK ✓

Particulars of Guard Rails :-

- FREEBOARD DECK BULWARK 1.2M HIGH X 7% WITH 180 X 75 X 12 RAIL BAR AND STAYS 180 X 75 X 9% SPACED 1.6M. 4 GUARD RAILS WITH STANCHIONS 1.2M HIGH & 1.4M APART ✓
- FORECASTLE DECK } 3 GUARD RAILS WITH STANCHIONS 1.1M HIGH & 1.4M APART ✓
- BRIDGE DECK } ✓
- POOP DECK } ✓

Particulars of Gangways, Lifelines, etc. :-

GUARD RAILS ON TRUNK DECK :- 3 GUARD RAILS WITH STANCHIONS 1.1M HIGH & 1.4M APART. ✓

## Particulars of Freeing Arrangements.

	Length of Bulwark	Height of Bulwark	Size of Freeing Ports	Number each side	Area each side	Rule area each side
After Well ...	10.55M	1.22M	1000 X 500%	2	42.575M <sup>2</sup> OPEN RAILS 1M <sup>2</sup>	
Forward Well ...	9.05M	1.22M	1000 X 500%	1	31.375M <sup>2</sup> OPEN RAILS 0.5M	

State position of each freeing port ... After Well :- NEAR POOP AND BRIDGE AFT BULKHEAD (F. and A. position and height above deck edge) Forward Well :- ADJACENT TO BRIDGE FORWARD BULKHEAD

State whether the freeing ports are fitted with shutters, bars, or rails, and give particulars of such :- 3 VERTICAL BARS EQUALLY SPACED

Additional area where sheer is less than standard.



© 2021

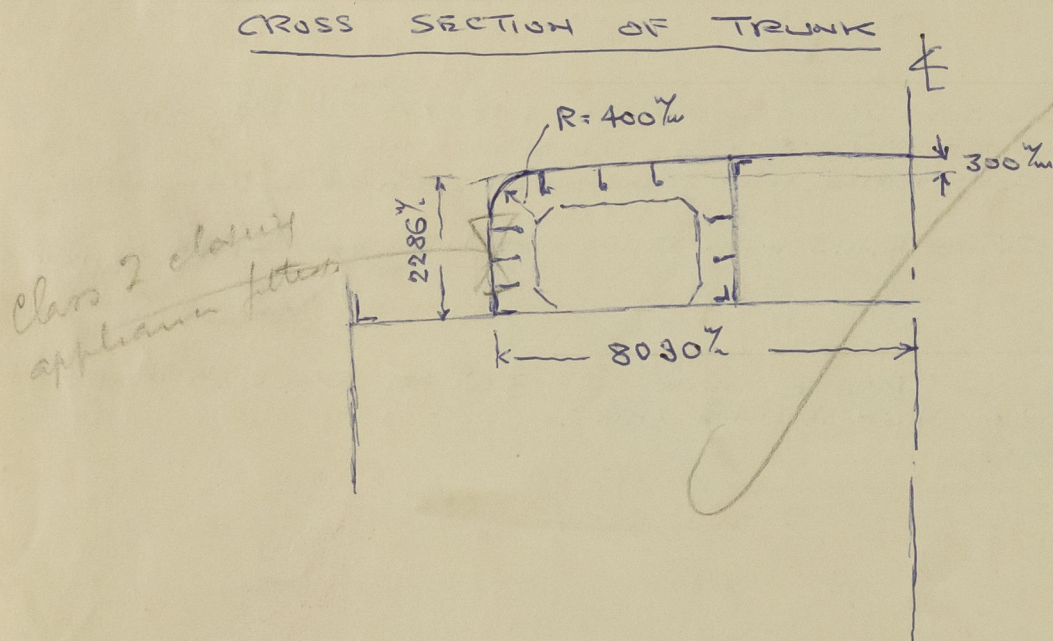
Lloyd's Register Foundation



# PARTICULARS OF PROTECTION TO OPENINGS, ETC.

HATCHWAYS ON FREEBOARD AND SUPERSTRUCTURE DECKS.													
← FREEBOARD ← SUPERSTRUCTURE DECK & TRUNK TOP →													
Description of Hatchway	...	...	No 1	No 1	No 2	No 3	No 4	No 5	No 6	No 7	No 8	No 9	No 10
Dimensions of Hatchway	...	...	2.64x3.45	760	2.64	11.61	10.6	8.275	8.275	10.275	10.6	10.6	11.9
COAMINGS <i>SEE SKETCH</i>	Height above Deck	...	300	460	460	650	650	650	650	650	650	650	740
	Thickness	...	11	10	11	11	11	11	11	11	11	11	100
	Sides Ends	...	11	10	11	11	11	11	11	11	11	11	100
	Stiffeners ... Brackets, Stays	...	-	-	-	-	-	-	-	-	-	-	-
HATCH BEAMS	Number	...	NONE	-	-	-	-	-	-	-	-	-	-
	Spacing	...	-	-	-	-	-	-	-	-	-	-	-
	Scantling and Sketch	...	-	-	-	-	-	-	-	-	-	-	-
FORE AND AFTERS	Number	...	NONE	-	-	-	-	-	-	-	-	-	-
	Spacing	...	-	-	-	-	-	-	-	-	-	-	-
	Unsupported Lengths Scantling* and Sketch	...	-	-	-	-	-	-	-	-	-	-	-
HATCH COVERS	Material	...	WOOD	STEEL	STEEL	STEEL	STEEL	STEEL	STEEL	STEEL	STEEL	STEEL	STEEL
	Thickness	...	75%	10%	10%	10%	10%	10%	10%	10%	10%	10%	10%
	How fitted	...	F&A	W.T.	W.T.	W.T.	W.T.	W.T.	W.T.	W.T.	W.T.	W.T.	W.T.
Bearing Surface ...													
Spacing of Cleats	...	...	600	APART	1000	APART	1200	APART	1200	APART	1200	APART	1200
Number of Tarpaulins	...	...	1	-	-	-	-	-	-	-	-	-	-
*Are wood fore and afters steel shod at all bearing surfaces? Are battens and wedges efficient and in good condition? Are tarpaulins in good condition and in accordance with rule requirements? Are lashings provided in accordance with rule requirements?													

Particulars of any special features:— 5. WATERTIGHT BULKHEADS.



all fittings in the top of the trunk & upper deck have been adequately compensated