

M.V. "ASTURIA"

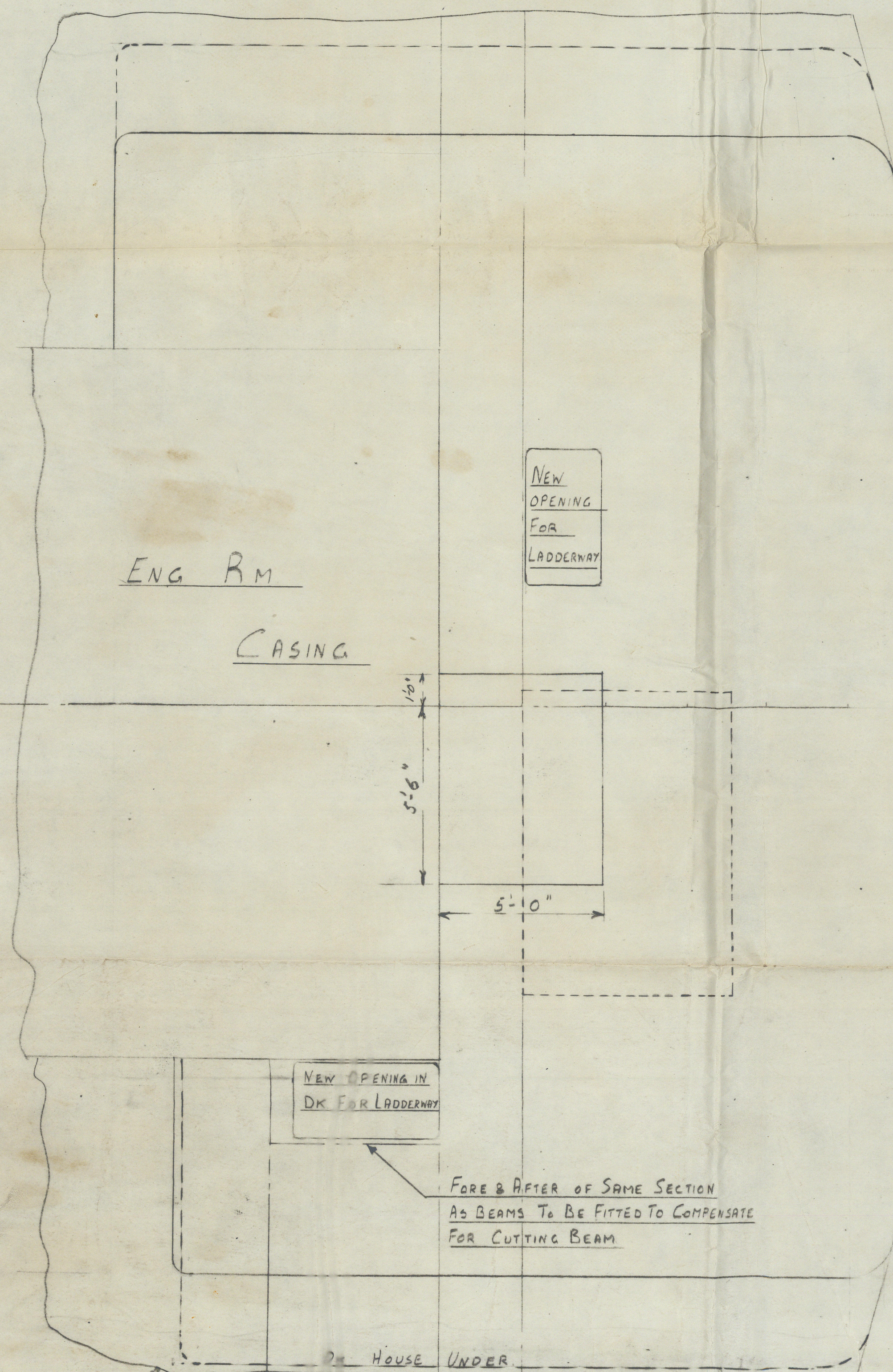
NEW DECKHOUSE ON BOAT DK AFT

SCALE: $\frac{3}{8}'' = \text{ONE FOOT}$

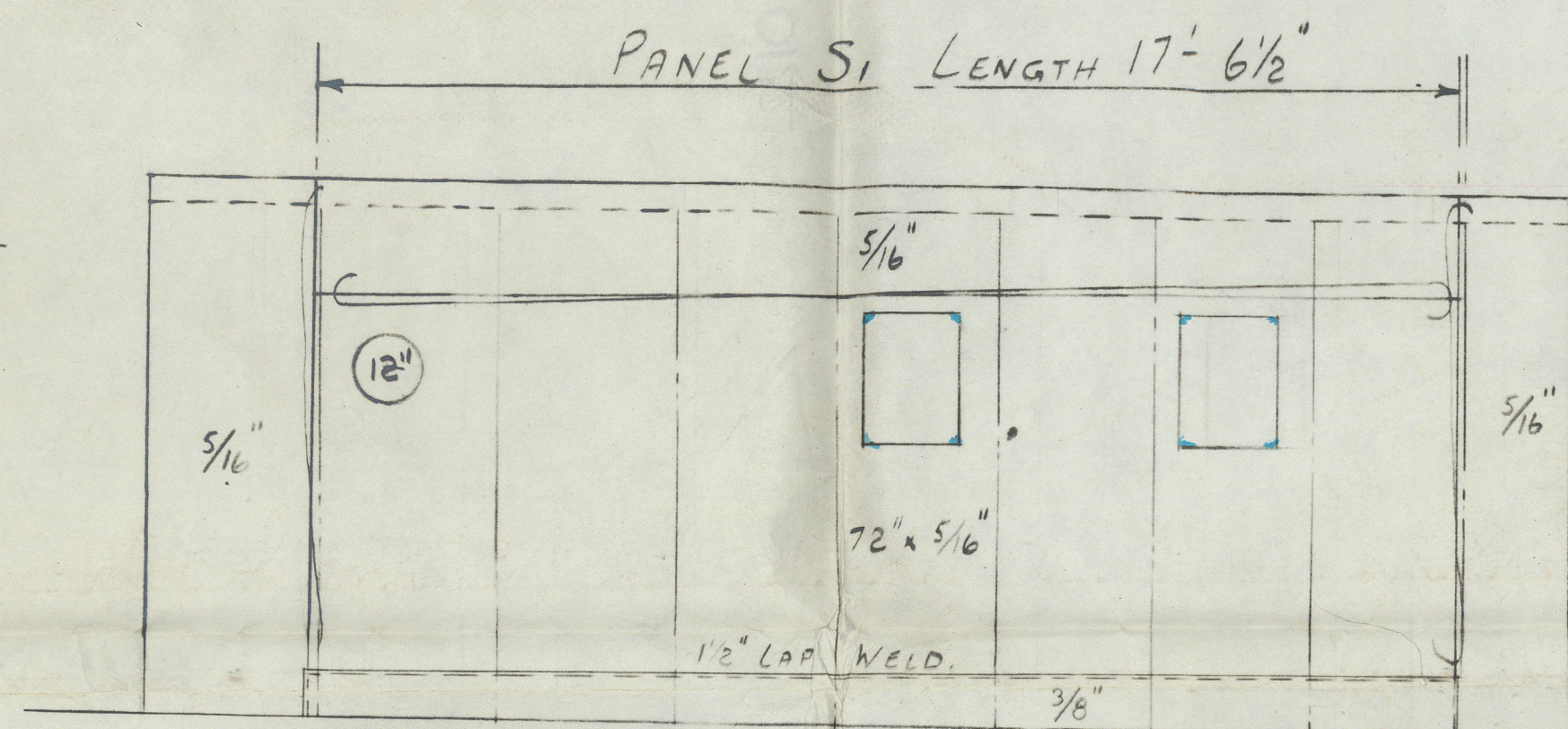
DRAWING NO 9-H-9

NOTES:- NEW DECKHOUSE TOP TO BE SHEATHED

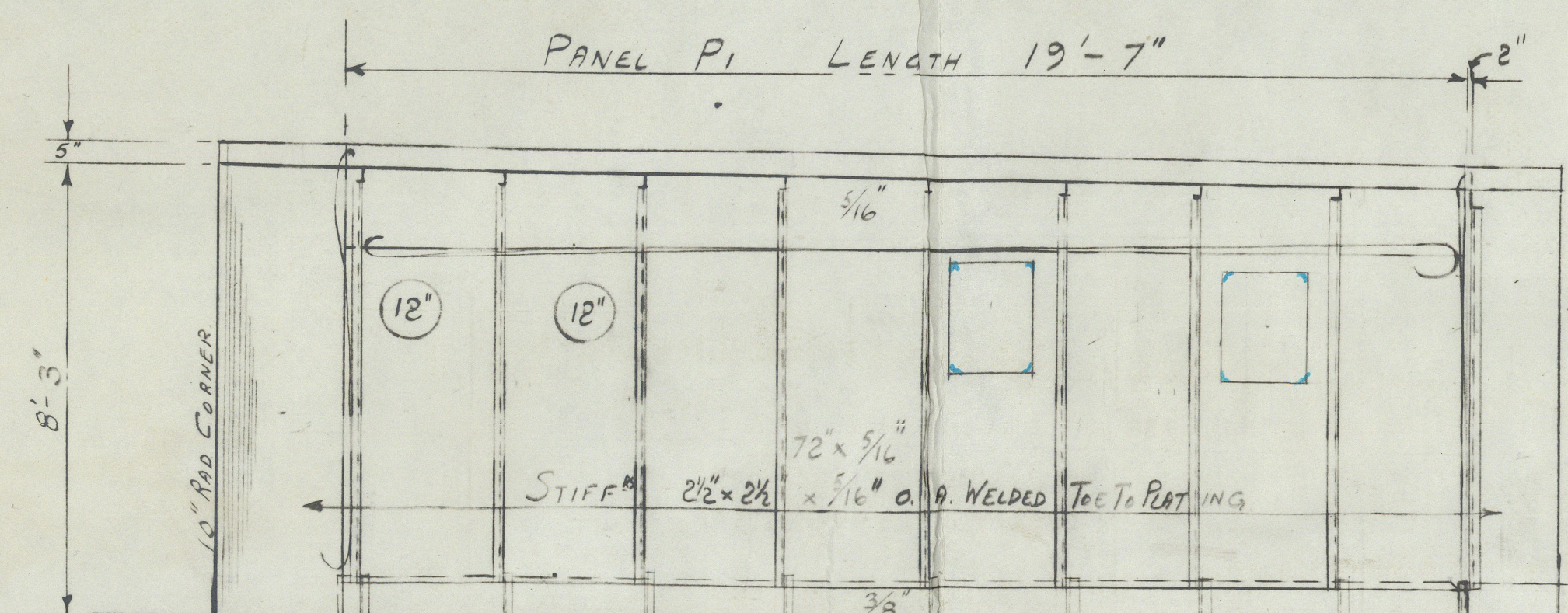
PLAN VIEW AT BOAT DK.



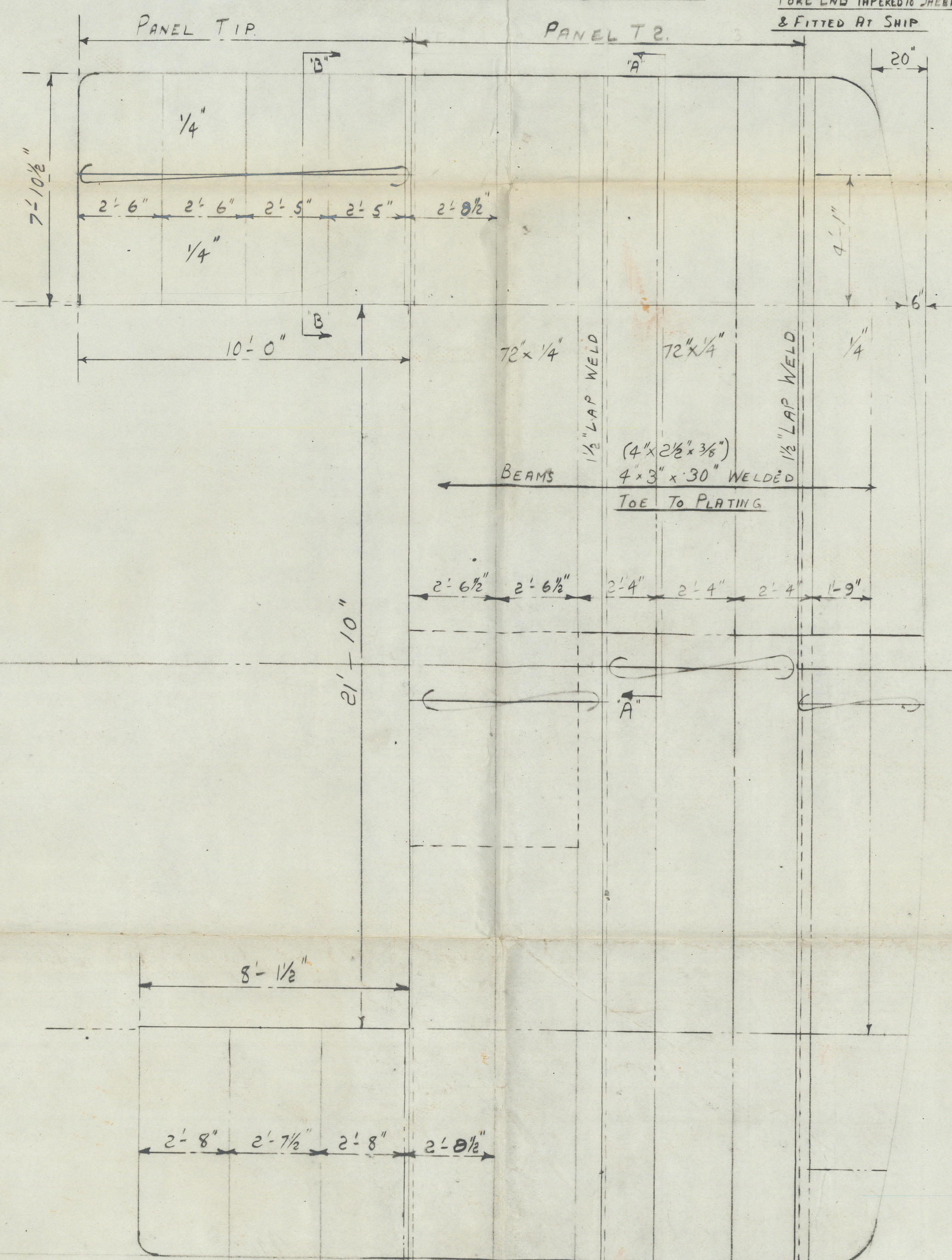
FOR PREFABRICATION ALLOW
4" OF SHEAR IN LENGTH OF
NEW HOUSE TOP.



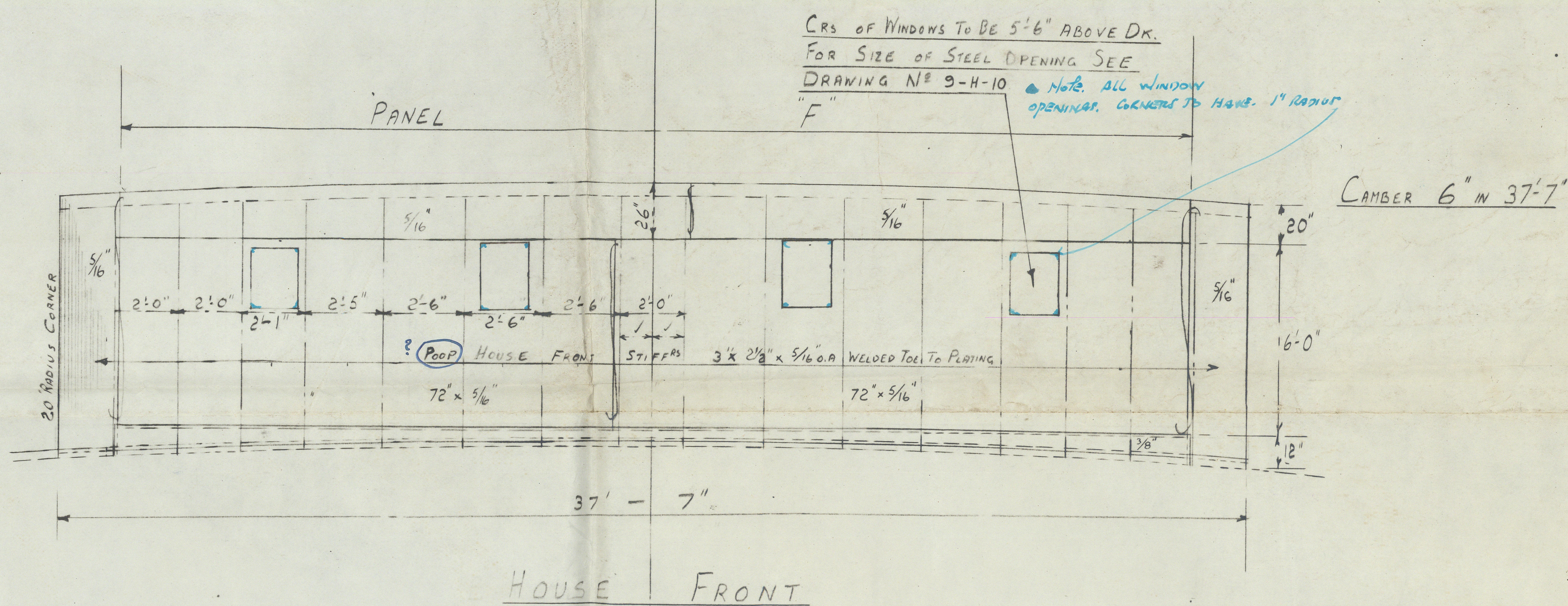
ELEVATION OF STARBOARD SIDE OF HOUSE



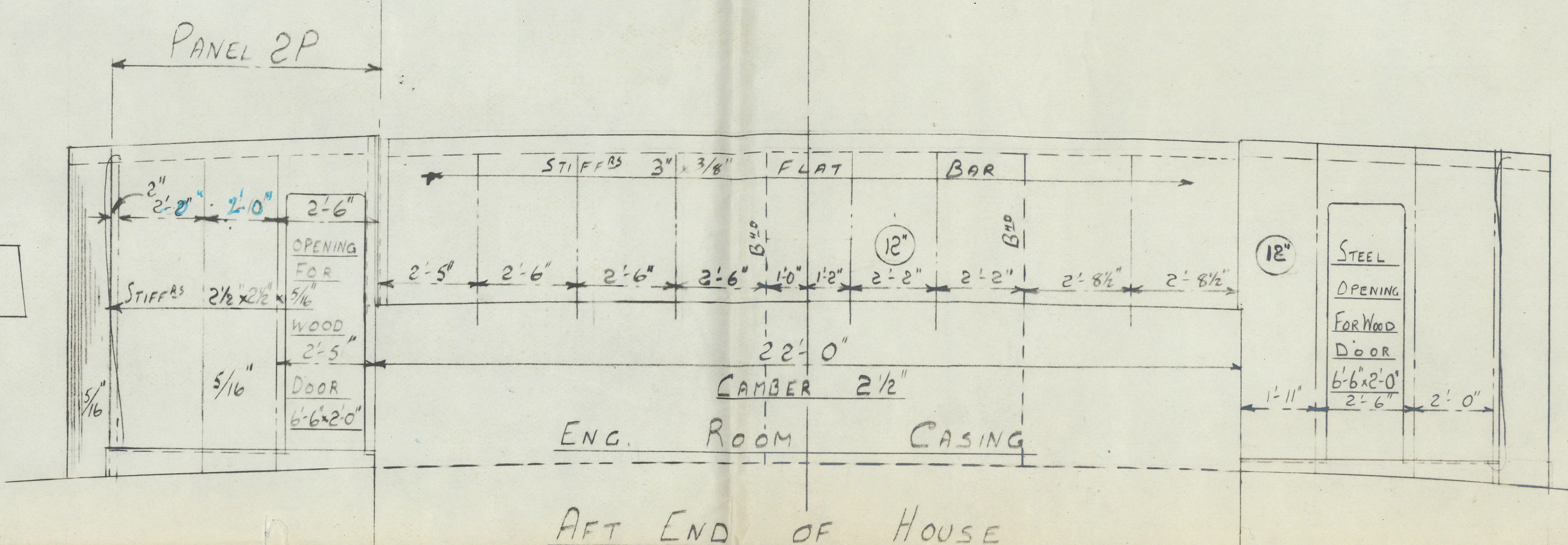
ELEVATION OF PORT SIDE OF HOUSE



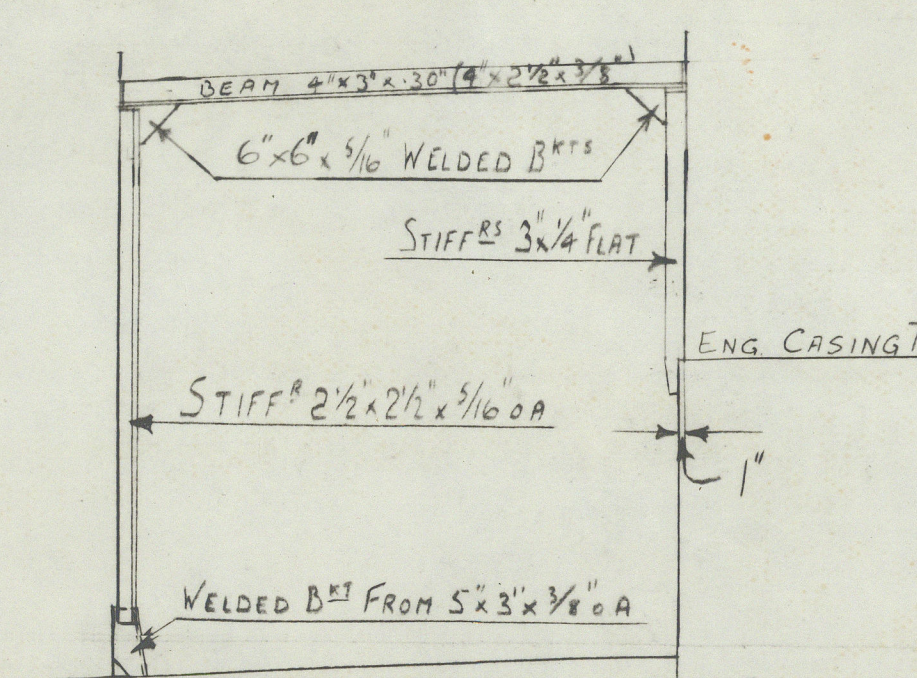
NEW DECKHOUSE TOP.



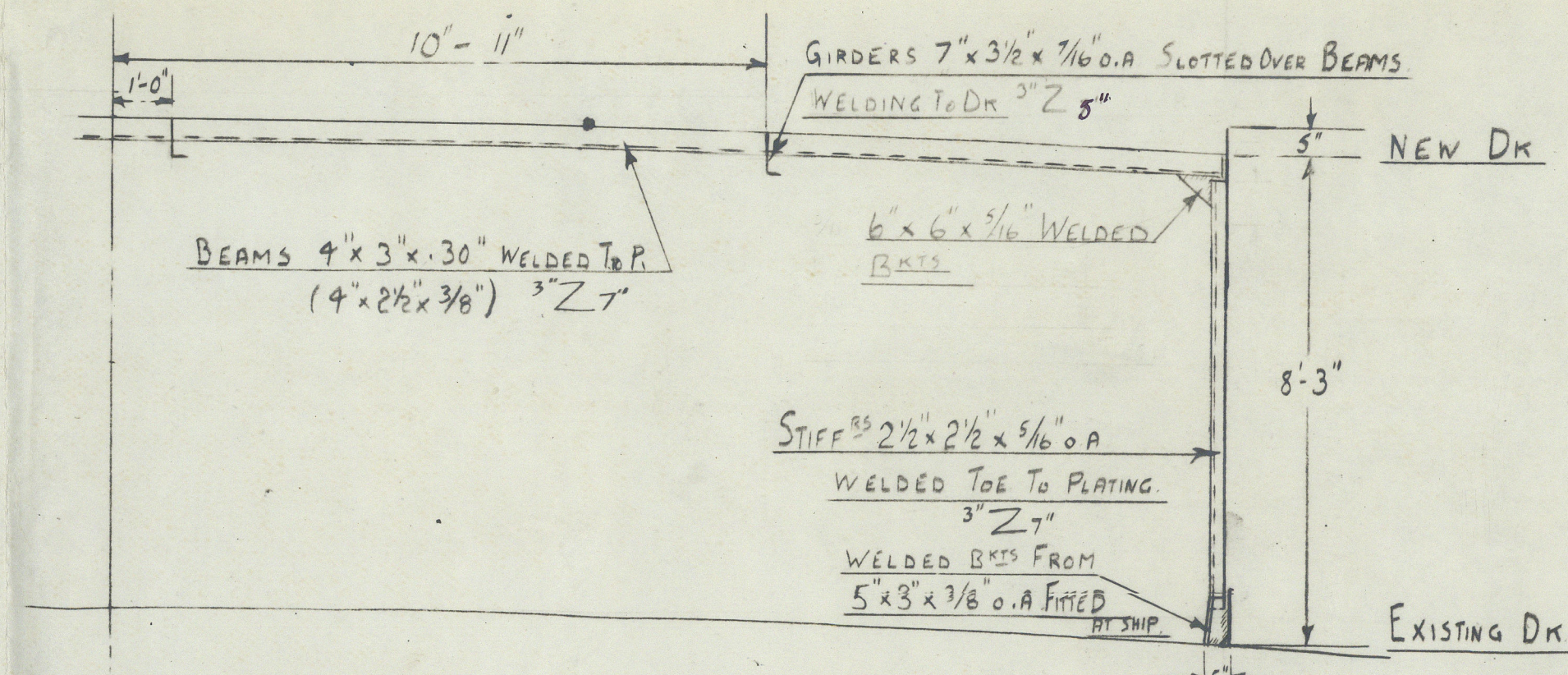
HOUSE FRONT



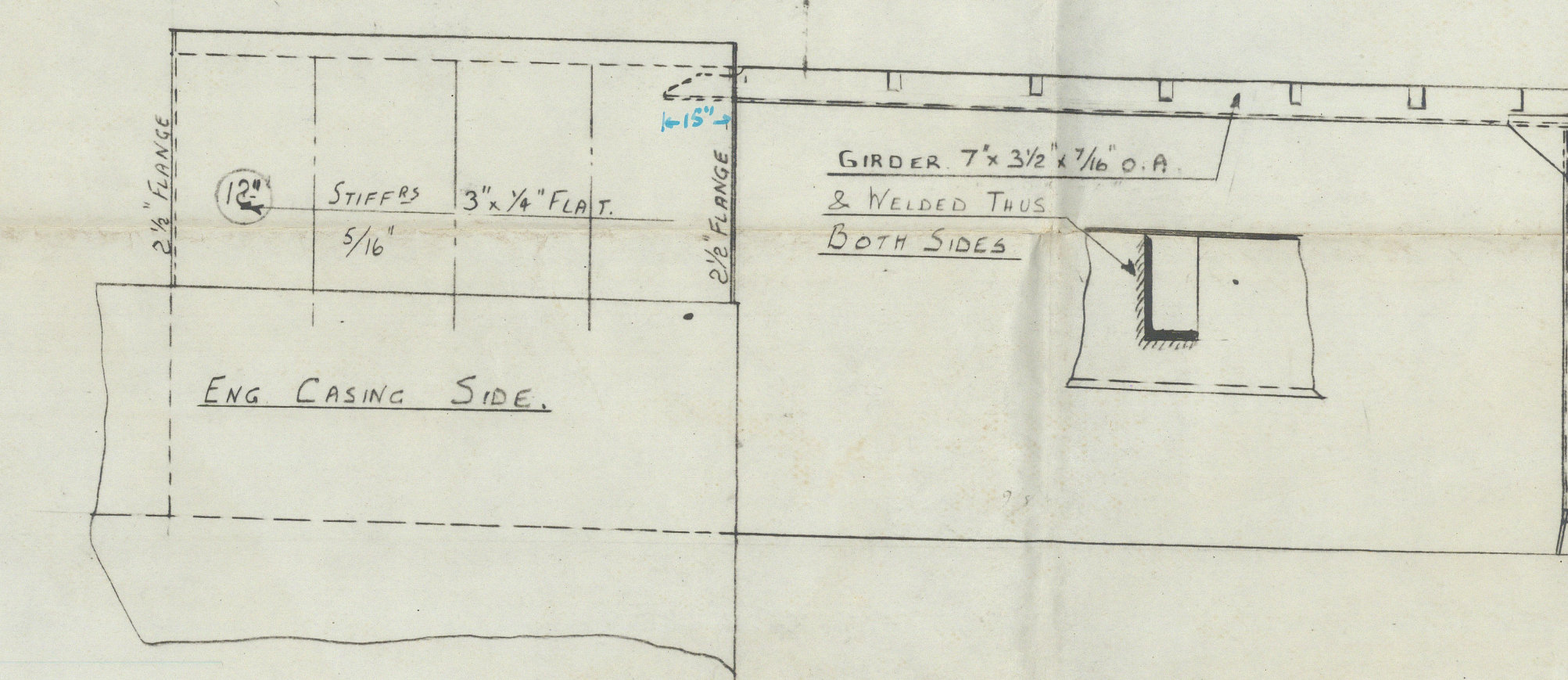
AFT END OF HOUSE



SECTION B-B



SECTION A-A



LONGITUDINAL SECTION IN WAY OF ENG CASING SIDE

20 JAN 1957
CARDIFF

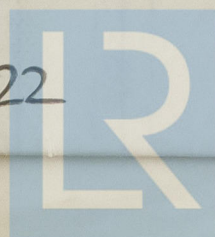
STUART DRY DOCK
CARDIFF
25 JAN 1957
1st ISSUE

M S. "ASTURIA"

NEW DECKHOUSE ON BOAT DECK AFT.

SS/MS "	
TO ACCOMPANY	Rpt. No.
CARDIFF	Rpt No 60109
Dated	
SUBJECT:-	

002602-002610-0122



© 2021

Lloyd's Register
Foundation