

LLOYD'S REGISTER OF SHIPPING

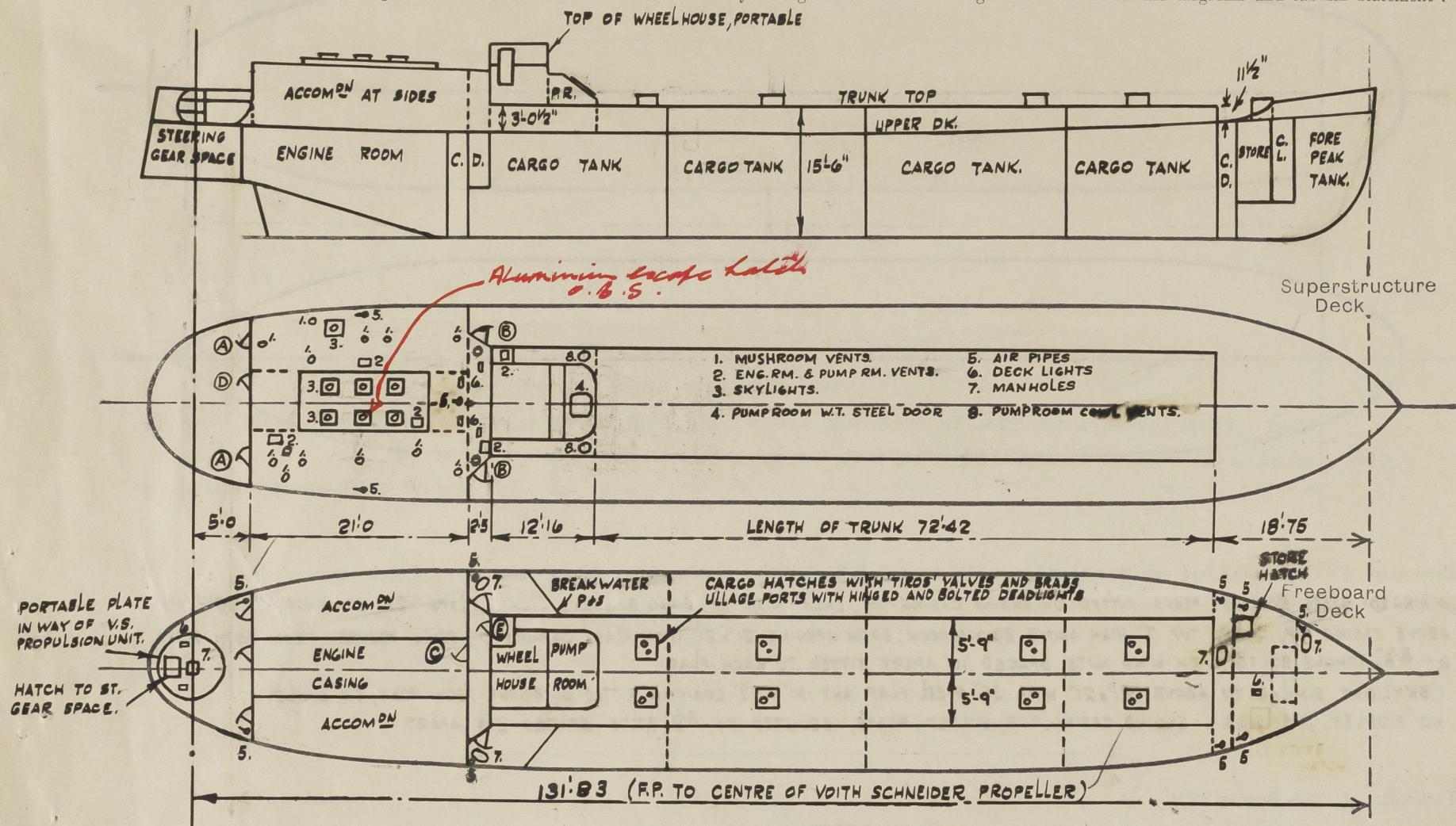
Index No. _____
(For London Office only.)

UNITED WITH THE BRITISH CORPORATION REGISTER

SURVEYS FOR FREEBOARD.
(CONDITIONS OF ASSIGNMENT.)

Ship's Name "B.P. EXPLORER" Port of Survey NORTHWICH.
 Official Number _____ Surveyor's Signature J. Abkeye
 Nationality and Port of Registry BRITISH, LONDON. Date of Survey DURING CONSTRUCTION.

Disposition and dimensions of superstructures, trunks, deckhouses, machinery casings and wood sheathing to be inserted in the diagrams and tabular statement:—



Particulars of Superstructures, Trunks, Casings, Deckhouses.

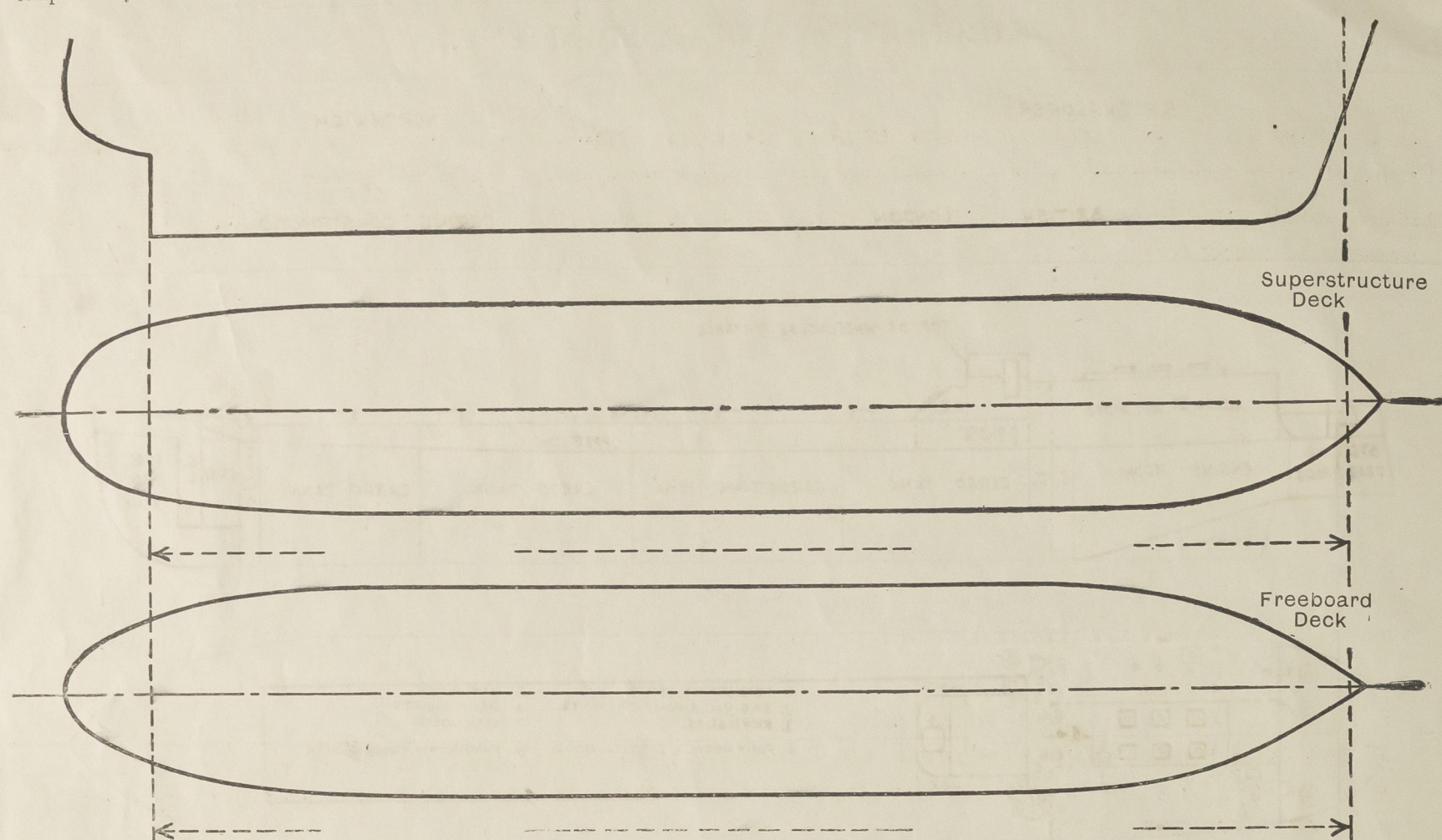
	Coaming	Plating	Stiffeners	Spacing	End Attachments of Stiffeners	Size of Openings	Height of Sills	Height, Beam to Beam
Poop Bulkhead ...	✓							
Raised Quarter Deck Bulkhead ...	✓							
Bridge, After Bulkhead ...	④ 6" x 3/8"	25"	3" x 2 1/2" x 26" O.A.	26"/27"	✓	22" x 48"	24"	6'-6"
Bridge, Forward Bulkhead ...	③ 6" x 3/8"	25"	3 1/2" x 3" x 38" O.A. 2 1/2" HALF ROUND.	21" AT SIDES 23"/24 1/2" AT CR.	✓	22" x 48"	24" AT SIDES 18" AT CR.	6'-6"
Forecastle Bulkhead ...	✓							
Trunk, Aft ...	32"	30"	4" x 2 1/2" x 31" O.A./TW LONGER 10" x 32" TRANSVERSES 6" x 38" FLAT.	23" 7'-4"	32" BKTS.	SEE CARGO HATCHES		3'-0 1/2" AT CENTRE.
Trunk, Forward ...	32"	30"	4" x 2 1/2" x 31" O.A./TW LONGER 10" x 32" TRANSVERSES 6" x 38" FLAT.	23" 7'-4"	32" BKTS.	Do.		11 1/2" AT CENTRE.
Exposed Machinery Casings on Freeboard or Raised Quarter Decks ...	⑤ 6" x 3/8"	25"	3" x 2 1/2" x 25" O.A.	24"/26"	✓	22" x 48"	24"	6'-6"
Exposed Machinery Casings on Superstructure Decks (CASING TOP) ...	7" x 1/4"	30"	3 1/2" x 2 1/2" x 30" O.A.	42"	30" BKTS.	SKYLIGHTS 21" x 21"	2 1/2" x 30" ABOVE CASING TOP	7" ABOVE BRIDGE DECK
Machinery Casings within Superstructures not fitted with Class I Closing Appliances ...	⑥ 6" x 3/8"	22"	2 1/2" x 2 1/2" x 1/4" O.A.	27"/28 1/2"	✓	22" x 48"	9"	6'-6"
PUMP ROOM & WHEELHOUSE P.R.M.	36"	30"	2 1/2" x 2 1/2" x 1/4" O.A.	17" - 2'-9"	✓	3'-6" x 27"	16"	3'-6" HT. ABOVE
Deckhouses and Pump Room Entrances W. HOUSE	25"	25"	2 1/2" x 2 1/2" x 1/4" O.A.	2'-0" - 2'-8"	✓	24" x 48"	17"	4'-0" } TRUNK.

Particulars of Closing Appliances (state if capable of being manipulated from both sides).

Poop Bulkhead ...	✓
Raised Quarter Deck Bulkhead ...	✓
Bridge, After Bulkhead ...	HINGED STEEL W.T. DOORS CAPABLE OF BEING OPERATED FROM BOTH SIDES.
Bridge, Forward Bulkhead ...	" " " " " " " " " " " "
Forecastle Bulkhead ...	✓
Exposed Machinery Casings on Freeboard or Raised Quarter Decks ...	HINGED STEEL W.T. DOORS CAPABLE OF BEING OPERATED FROM BOTH SIDES.
Exposed Machinery Casings on Superstructure Decks ...	✓
Machinery Casings within Superstructures not fitted with Class I Closing Appliances ...	HINGED STEEL W.T. DOOR CAPABLE OF BEING OPERATED FROM BOTH SIDES.
Deckhouses and Pump Room Entrances	" " " " " " " " " " " "

PARTICULARS OF PROTECTION TO OPENINGS, ETC.

The following diagrams should be used to indicate the positions of cargo and coaling hatchways, gangway, cargo and coaling ports, side scuttles, scuppers, ventilators, companionways, etc., which would affect the seaworthiness of the ship :—



Particulars of filley, funnel and ventilator coamings, engine room skylight and other openings in machinery casing tops and their means of closing :—

6 HINGED STEEL SKYLIGHT FLAPS FITTED ON ENGINE CASING TOP, EACH WITH 10" DIAM. BULLSEYE LIGHT, FLAPS .25", COAMINGS .30"x2 1/2" HIGH ABOVE CASING TOP, CASING TOP 7" HIGH ABOVE BRIDGE DECK. EACH OPENING 21"x21" WITH FLAPS CAPABLE OF BEING SECURED FROM BOTH SIDES.
6- 5/8" TOGGLE BOLTS WITH WING NUTS SPACED 10" APART FITTED TO EACH FLAP.
1 SKYLIGHT SIMILAR TO ABOVE 21"x21" WITH .25" STEEL FLAP AND .30"x2 1/2" COAMING, FITTED ON BRIDGE DECK PORT, TO GALLEY.
NO FIDDLEY OPENINGS. ENGINE CASING TOP, BOLTED PLATE, SECURED BY 5/8" BOLTS SPACED 2 3/4" APART.

Particulars of Flush Bunker Scuttles :—

NONE FITTED.

BOLTED MANHOLE COVERS FITTED TO FORE PEAK TANK, FORD C.D. PORT, & TO AFTER C.D. PORT & STBD. OPENINGS 21"x16" FORD & 18"x13" AFT WITH 5/8" STUDS SPACED 3" & .30" STEEL COVERS. BOLTED M.H. COVER WITH SIGHT GLASS FITTED TO ST. GEAR COMPT. COAMING 6 1/4", .30" STEEL COVER WITH 5/8" STUDS SPACED 2 1/8" SIGHT GLASS FITTED WITH HINGED BRASS DEADLIGHT SECURED BY 3- 1/8" BOLTS.

Particulars of Companionways :—

(including those incorporated in deckhouses and masthouses)
STEEL DECKHOUSE AFT WITH ACCESS TO PUMPROOM (ABOVE FREEBOARD DECK) BY MEANS OF HINGED STEEL W.T. DOOR 3'-6" x 27", COAMING 16" ABOVE TRUNK TOP. ACCESS ALSO TO E.R. FORD BY STEEL HINGED W.T. DOOR 22'x48", COAMING 9", & TO E.R. AFT BY MEANS OF EXPOSED STEEL W.T. HINGED DOOR 22'x48", COAMING 24" O.B.S.

Particulars of Ventilators in exposed positions on freeboard and superstructure decks :—

NONE FITTED ON FREEBOARD DECK.

16-6" DIAM. M.R. VENTS FITTED ON BRIDGE HOUSE TOP, COAMINGS 3"x35" WITH W.T. SCREWDOWN HEADS.

5-8"x9" VENTS. FITTED ON BRIDGE HOUSE TOP, SERVING E.R. & PUMPROOM, COAMINGS 1 1/2"x30", VENTS. CLOSED BY 3/16" W.T. STEEL FLAPS SECURED BY 2-3/8" BOLTS (SEE DETAIL ON BACK PAGE)

1-8" DIAM. COWL VENT. FITTED P&S ON TRUNK TOP, TO PUMPROOM, COAMING 3'-0" x 38" WITH WOOD PLUGS & CANVAS COVERS.

Particulars of Air Pipes in exposed positions on freeboard, raised quarter, or superstructure decks :—

FREEBOARD DECK 1-3" DIA. AIR & FILLING PIPE PORT SIDE 3'-3" HIGH TO FORE PEAK TANK WITH CANVAS COVER, WOOD PLUG & SCREWED BRASS CAP.

1-4" DIA. AIR PIPE P&S, VENTILATOR TO FORD STORES 3'-3" HIGH WITH CANVAS COVER & WOOD PLUG.

1-3" DIA. AIR PIPE P&S TO FORD COFFERDAM 3'-3" HIGH WITH CANVAS COVER & WOOD PLUG.

1-3" DIA. AIR PIPE P&S TO AFTER COFFERDAM 3'-3" HIGH WITH CANVAS COVER & WOOD PLUG.

1-3" DIA. AIR PIPE P&S, VENTILATOR TO STEERING GEAR SPACE 3'-0" HIGH WITH CANVAS COVER & WOOD PLUG.

BRIDGE DECK 1-3 1/2" DIA. AIR PIPE TO E.R. FUEL TANKS, 6" HIGH WITH GAUZE & CANVAS COVER.

1-2" DIA. AIR PIPE P&S TO E.R. COOLING WATER TANKS 6" HIGH WITH CANVAS COVER.

AIR PIPES ARE PROVIDED WITH WIRE GAUZE, CANVAS COVERS OR WOOD PLUGS WHERE APPLICABLE

Particulars of Gangway Cargo and Coaling Ports :—

NONE FITTED.

Particulars of Scuppers and Sanitary Discharge Pipes :—

1-2" DIAM. G.M. STORM VALVE FITTED BELOW FREEBOARD DECK STBD. FROM WASHBASIN ABOVE DECK IN BRIDGE SPACE, SCREWDOWN FITTING ON FLAP WITH OPEN AND SHUT INDICATOR, OPERATED IN ENGINE ROOM.

SHANKS UNDERWATER 'RIVER' TYPE (S.5718) W.C. FITTED WITH G.M. COCKS ON SHELL BELOW W.L. 1" INLET AND 2" OUTLET, SHUT OFF OPERATED IN ENGINE ROOM.

Particulars of Side Scuttles & Deadlights :—

NONE FITTED BELOW FREEBOARD DECK.

10" DIAM. BRASS FRAMED SIDELIGHTS IN BRIDGE P&S, WITH HINGED DEADLIGHTS SECURED BY 2-HINGED TOGGLE BOLTS.

6" " " " SIGHTGLASSES, WITH HINGED BRASS OILTIGHT DEADLIGHTS SECURED BY 3-HINGED TOGGLE BOLTS, FITTED IN EACH CARGO TANK HATCH LID.

Vertical distance of Sill of lowest Side Scuttle above top of keel.

Distance from amidships to centre of lowest Side Scuttle.

Particulars of Guard Rails & Bulwarks :—

FORE DECK. 3 1/4" SHORT LINK GUARD CHAINS, EACH SPACED 12" APART, FITTED WITH SLIP HOOKS & STRETCHING SCREWS, TOP CHAIN 3'-0" ABOVE DECK, STANCHIONS (HINGED) 1 1/2" DIA. FORGINGS SPACED 6'-0" APART.

AFTER DECK. 1/4" THICK STEEL BULWARKS, 36" HIGH AND 2-3/8" GUARD RAILS IN WAY OF OPENING P&S, RAILS 9" APART.

BRIDGE DECK. 2 1/4" SHORT LINK GUARD CHAINS SPACED 10" APART, FITTED WITH SLIP HOOKS & STRETCHING SCREWS, HINGED STANCHIONS 30" HIGH SPACED 5'-0" APART.

Particulars of Gangways, Lifelines, etc. :—

PORTABLE BAR STANCHIONS AND 1 1/2" F.S.W.R. LIFELINE, WITH STRETCHING SCREWS, FITTED AT TRUNK TOP, LIFELINE 2'-9"

ABOVE TRUNK TOP, STANCHIONS SPACED 12'-0" APART.

LIFELINES PROVIDED ON FREEBOARD DECK FORWARD.

Particulars of Freeing Arrangements.

Particulars of Freeing Arrangements.						
	Length of Bulwark	Height of Bulwark	Size of Freeing Ports	Number each side	Area each side	Rule area each side
After Well	BULWARK AROUND STERN & OPEN RAILS					
Forward Well	OPEN RAILS.					
State position of each freeing port { After Well :— ✓ (F. and A. position and height above deck edge) { Forward Well :— ✓						
State whether the freeing ports are fitted with shutters, bars, or rails, and give particulars of such :— ✓						
Additional area where sheer is less than standard. ✓						

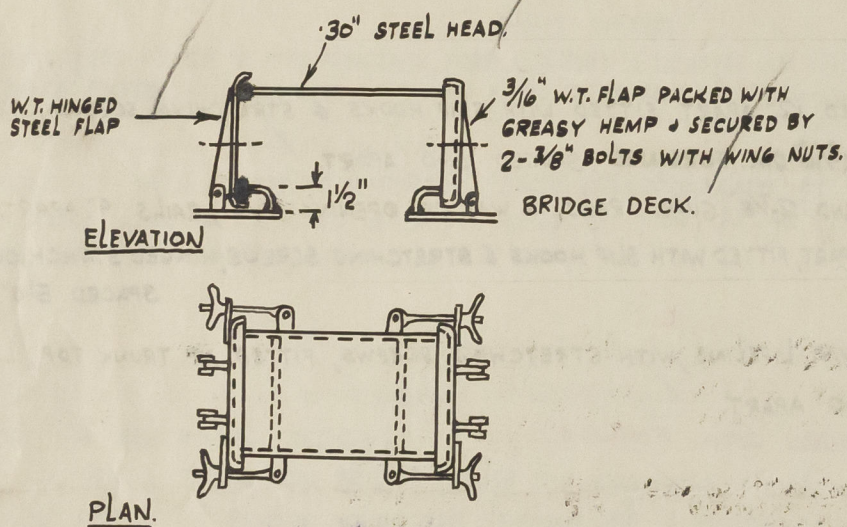
B.P. Explorer.

PARTICULARS OF PROTECTION TO OPENINGS, ETC.

HATCHWAYS ON FREEBOARD AND SUPERSTRUCTURE DECKS.									
Description of Hatchway			UPPER DECK FORD STORE HATCH	UPPER DECK AFTER HATCH TO ST. GEAR COMPT.	TRUNK TOP CARGO HATCHES (8 IN NUMBER.)				
Dimensions of Hatchway			25'x25"	22'x21"	23'x28"				
COAMINGS	Height above Deck ...		24"	24"	6" (ABOVE TRUNK TOP)				
	Thickness { Sides ...		38"	35"	38"				
	Stiffeners ... { Ends ...		✓	✓	✓				
	Brackets, Stays { Sides ...		✓	✓	✓				
	Brackets, Stays { Ends ...		✓	✓	✓				
HATCH BEAMS	Number		/	/	/				
	Spacing		/	/	/				
	Scantling and Sketch ...		/	/	/				
FORE AND AFTERS	Bearing Surface		/	/	/				
	Number		/	/	/				
	Spacing		/	/	/				
HATCH COVERS	Material		STEEL	STEEL	STEEL				
	Thickness		30"	25"	38"				
	How fitted		ALL FITTED WITH GREASY HEMP PACKING LIDS HINGED & SECURED BY 8-3/4" TOGGLE BOLTS WITH WING NUTS, SPACED 12" APART.						
Spacing of Close TOGGLE BOLTS...			← MAX. SPACING 12" →						
Number of Tarpaulins...			✓	✓	✓				
<p>*Are wood fore and afters steel shod at all bearing surfaces? ✓</p> <p>Are battens and wedges efficient and in good condition? ✓</p> <p>Are tarpaulins in good condition and in accordance with rule requirements? ✓</p> <p>Are lashings provided in accordance with rule requirements? ✓</p> <p>Are wood covers fitted with galvanised end bands? ✓</p>									

Particulars of any special features :— (Timber Deck-cargo Fittings, Skylights, Sewage Systems, Ash Ejectors, Rubbish Shoots, etc.)

DETAIL OF VENTILATOR HEADS TO PUMPROOM AND ENG. ROOM.



PORTABLE PORTION OF AFTER DECK IN WAY OF VOITH-SCHNEIDER PROPULSION UNIT,

PLATE 7'-0" DIAM. SECURED BY 5/8" BOLTS SPACED 2 3/8" APART AND JOINTED W.T.