

Lord's Radder Taperal

$A = 173.33 - 50 \text{ ft}$

$D = 374.3 - 41 \text{ ft}$

$A + D = 600 + 587$

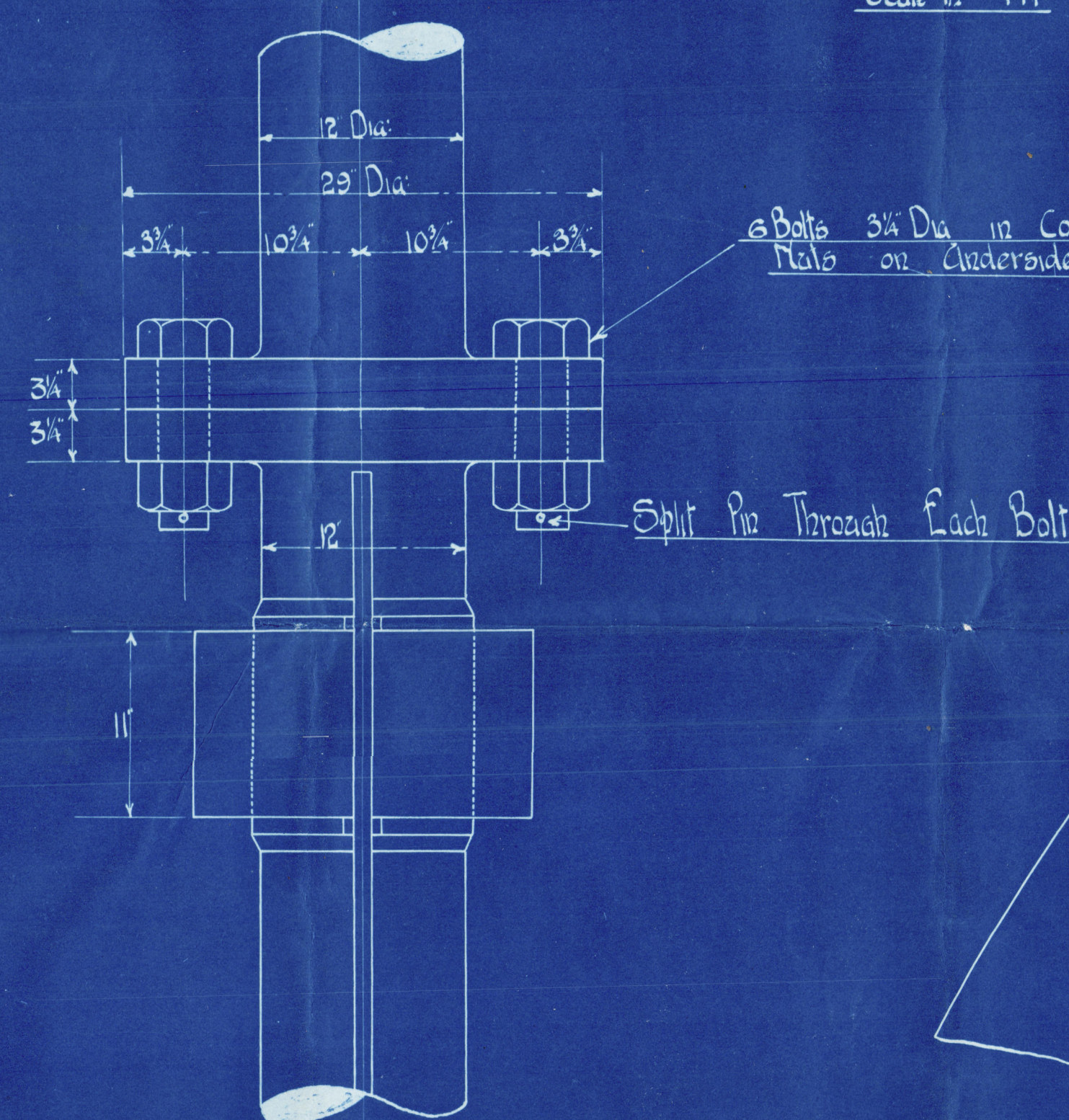
Speed = 11 Knots

Rate = 11 Dia: Radder +

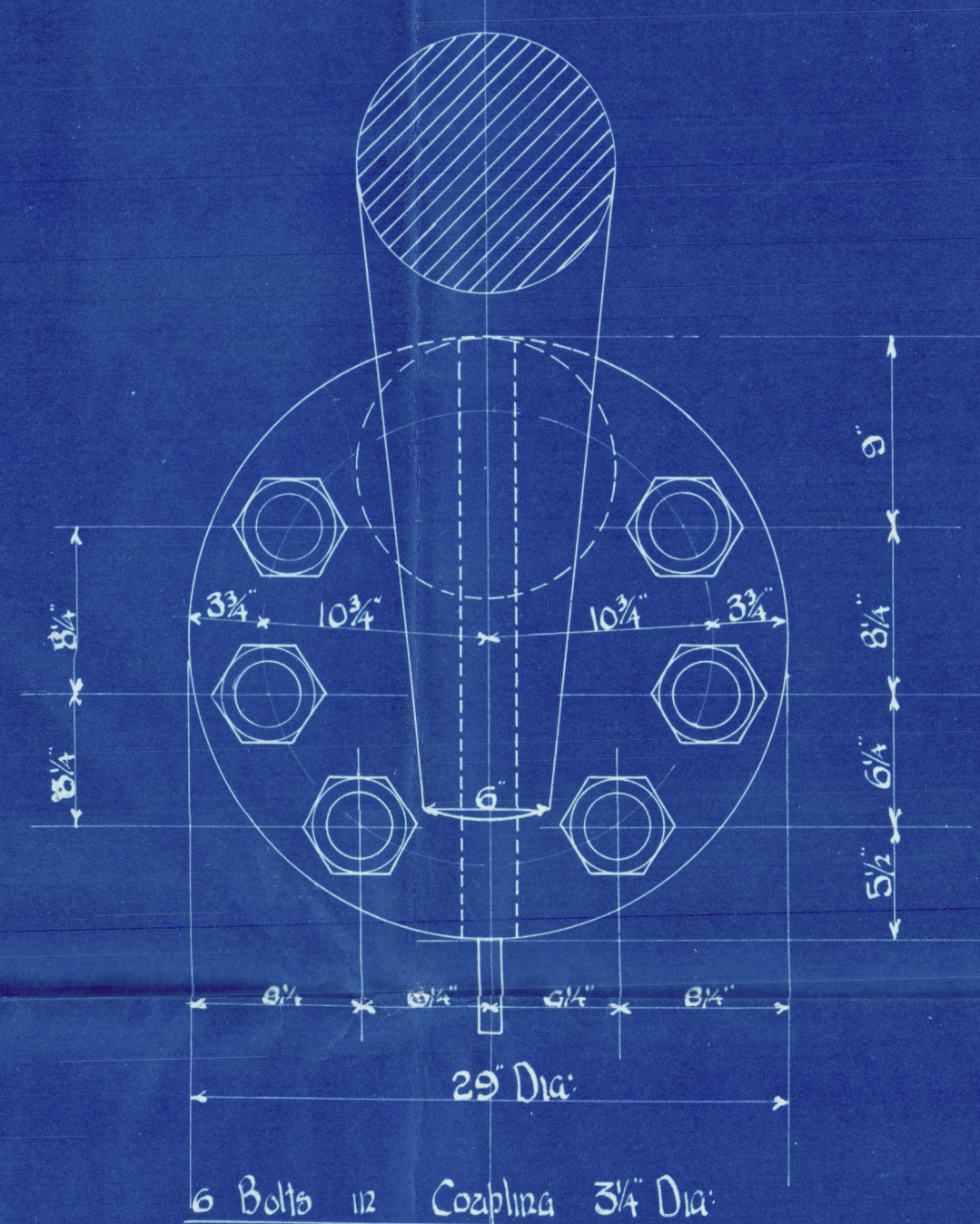
Diameter of Stock & R

Rate = 12 Dia: Radder Head

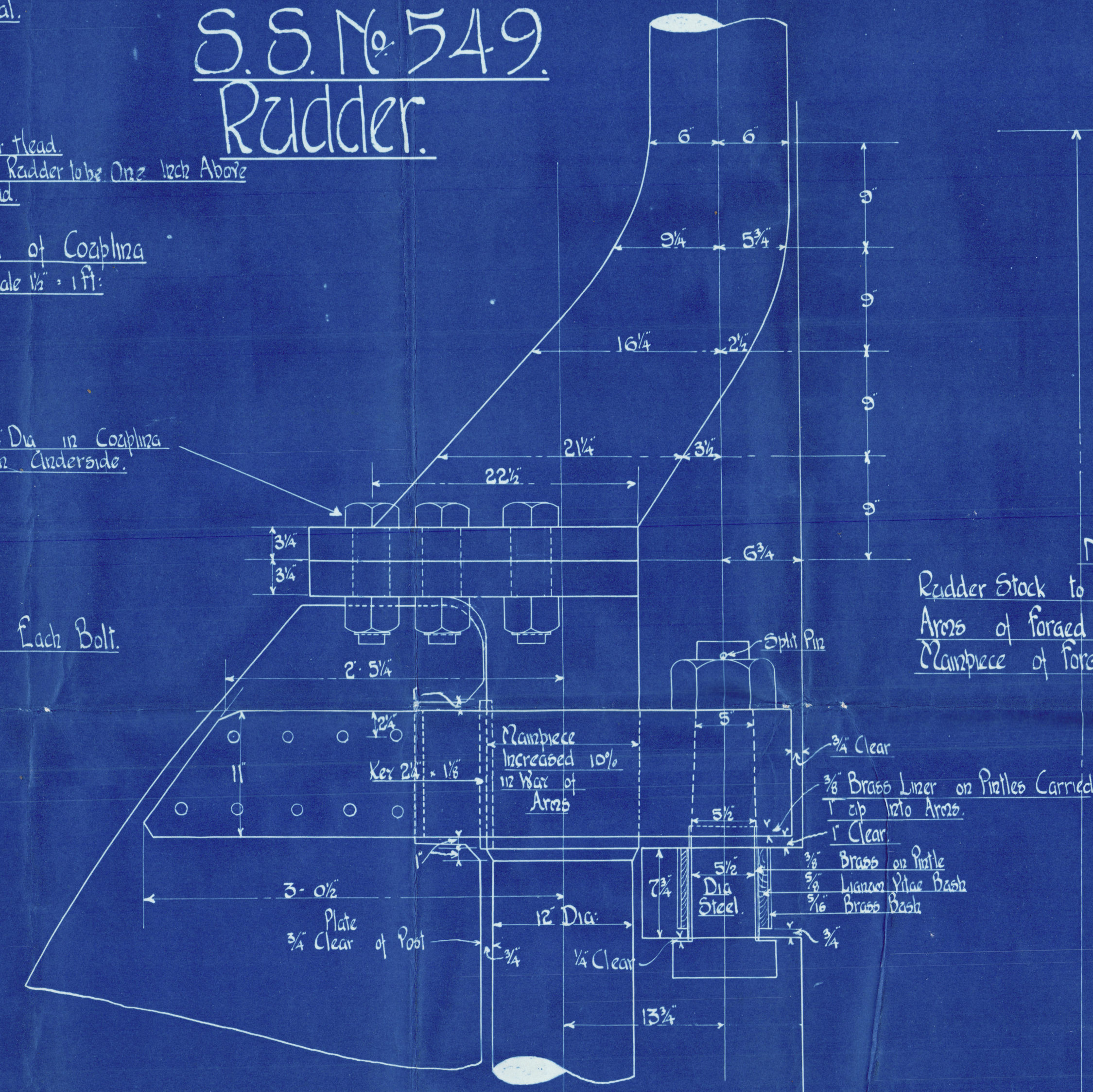
Detail of Coupling
Scale $\frac{1}{2}" = 1 \text{ ft}$



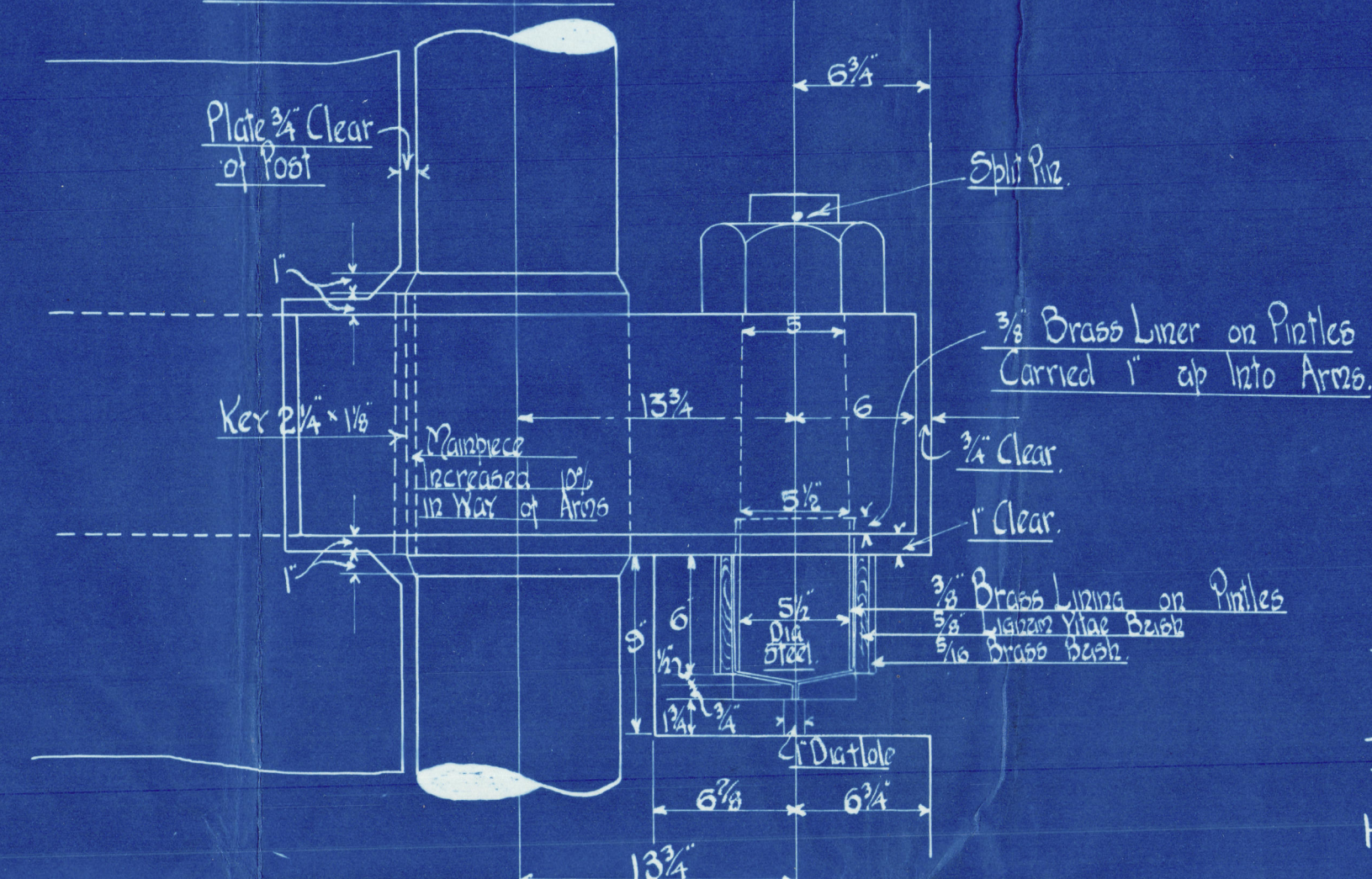
Plan of Coupling



Plan of Left Handed Arms



Detail of Pizzle and Bottom	Except Lock Pizzle.
--------------------------------	------------------------



Detail of Stoppers on
Radder Post.
See Full Size Plan.

Note.
Rudder Stock to be Made of Hot Steel.
Arms of forged Steel Shrank on to Mainpiece.
Mainpiece of forged Steel.

Note:-	Main Piece Increased
in War	of Arms to Allow of
Kernar	Benza Cal Clear of
Main Post.	

Slab frame
Diagram

The diagram shows a rectangular slab with a height of 8 and a width of $15\frac{1}{2}$. To the right of the slab is a vertical member with a dimension of $\frac{1}{2}$ at its top. The entire structure is labeled 'Slab frame Diagram'.

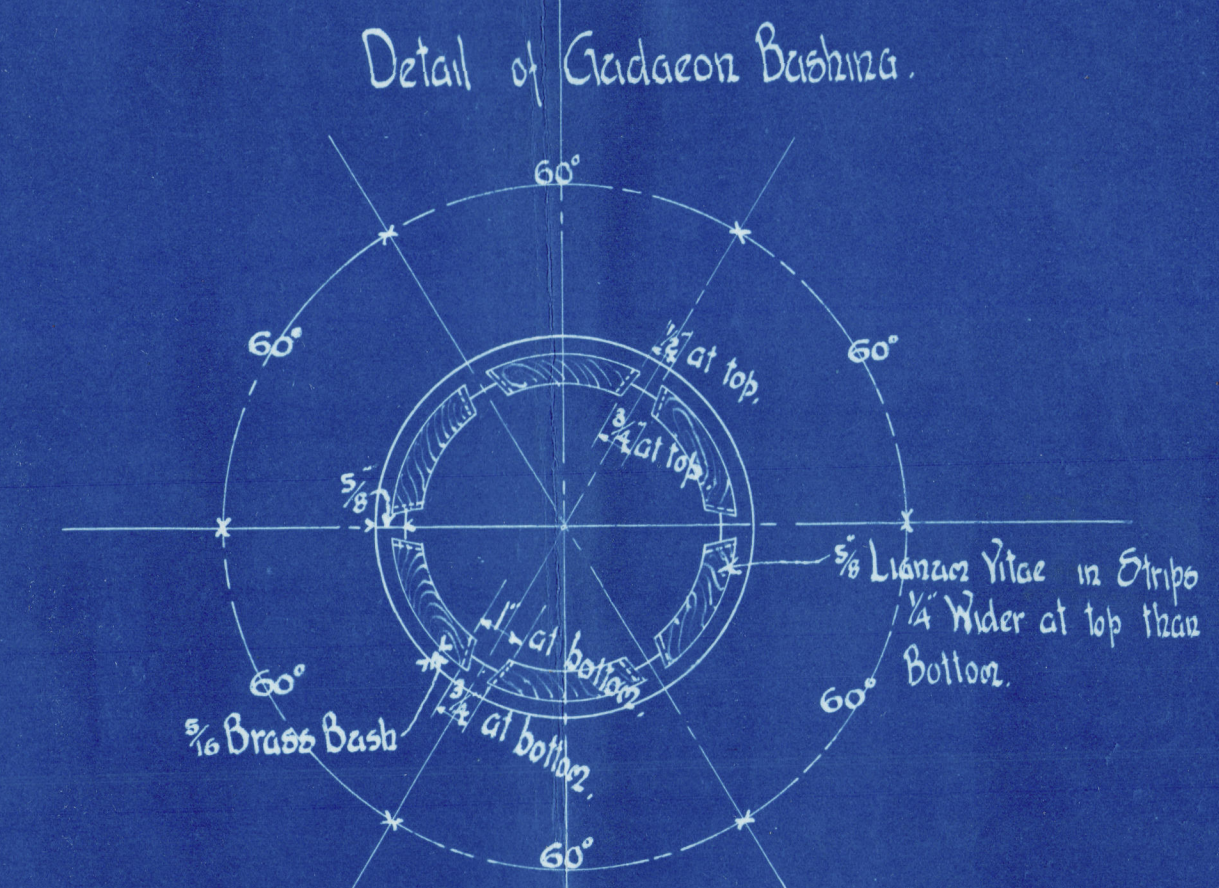
Spacina of Gadagone
to be Checked from
Stern frame.

Note. Scale $\frac{1}{2}$ " = 1 foot.

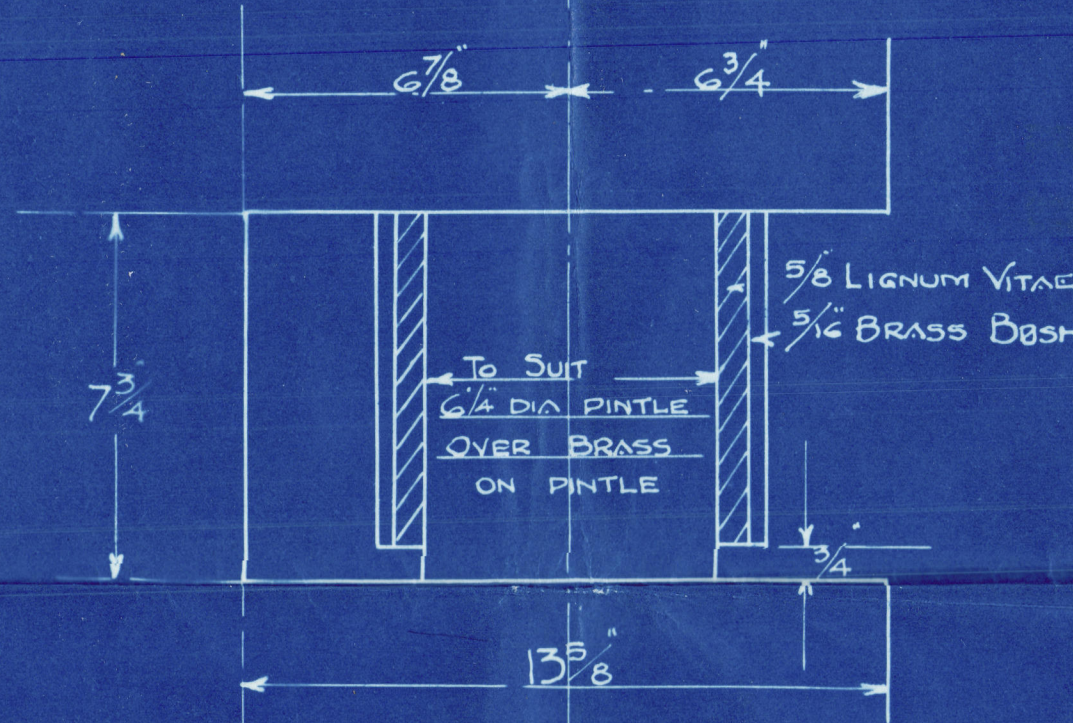
Stern frame to be Made of the
Best Selected Scrap IRON.

Stern frame to Lloyd's Rules.

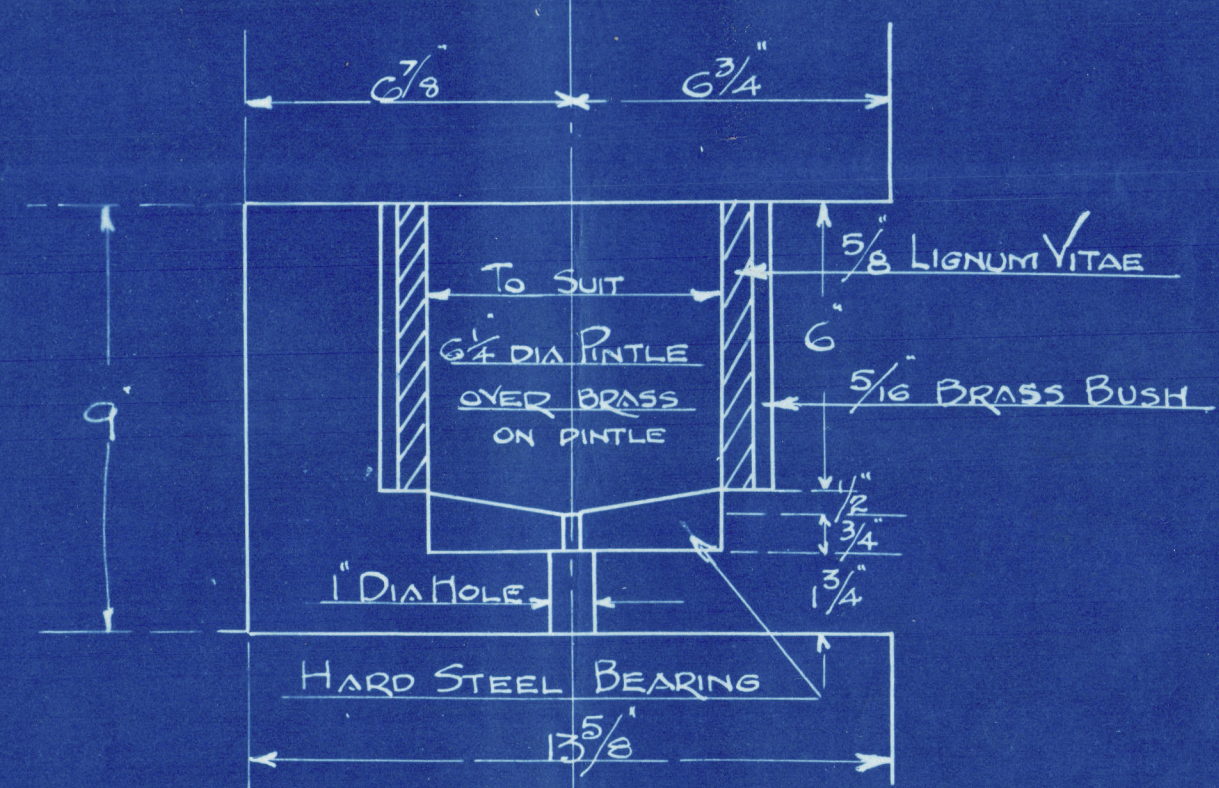
See Full Sized Sections
of Bottom Piece.



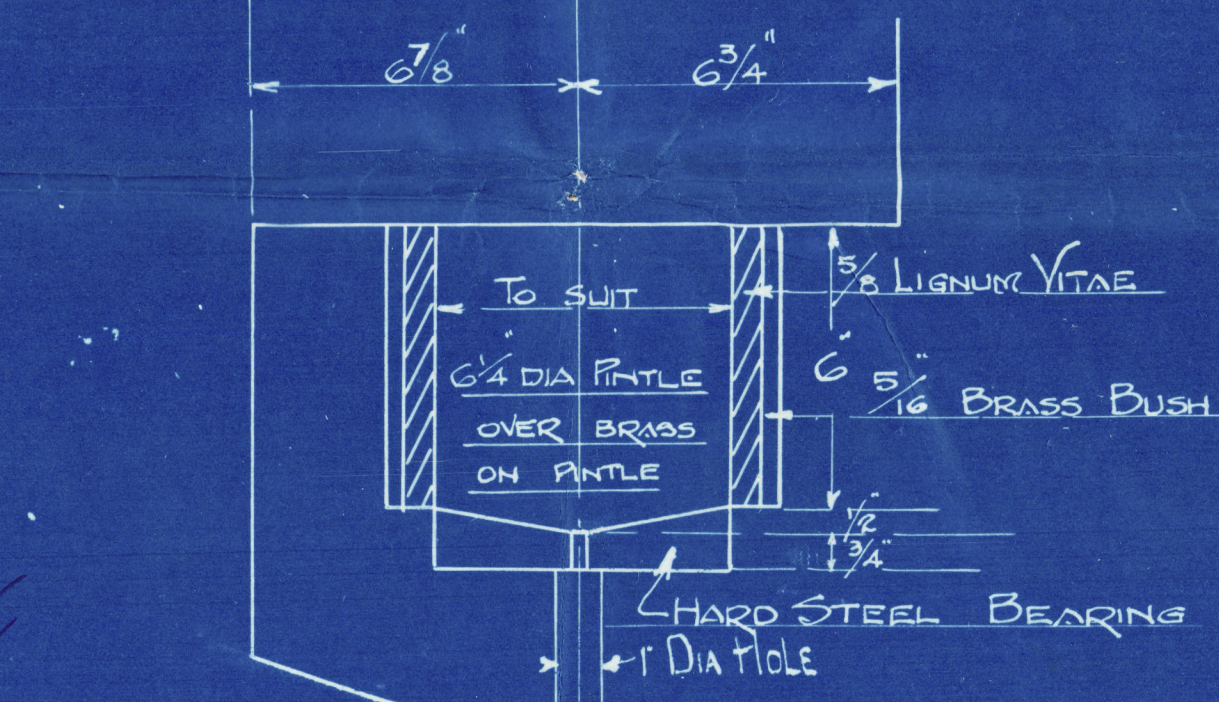
DETAIL OF TOP GUDGEON
SCALE 3" = 1 FOOT.



DETAIL OF GUDGEONS
WHERE MARKED B
SCALE 3" = 1 FOOT.



DETAIL OF BOTTOM GUDGEONS
SCALE $\frac{1}{3} = 1$ FOOT.



6

SUNDERLAND

J. L. THOMPSONS & SONS LTD

Nº 549

STERN FRAME & RUDDER

"British Duchess"

SUNDERLAND RPT. No. 28809.



© 2020

Lloyd's Register
Foundation

002592-007601-0003