
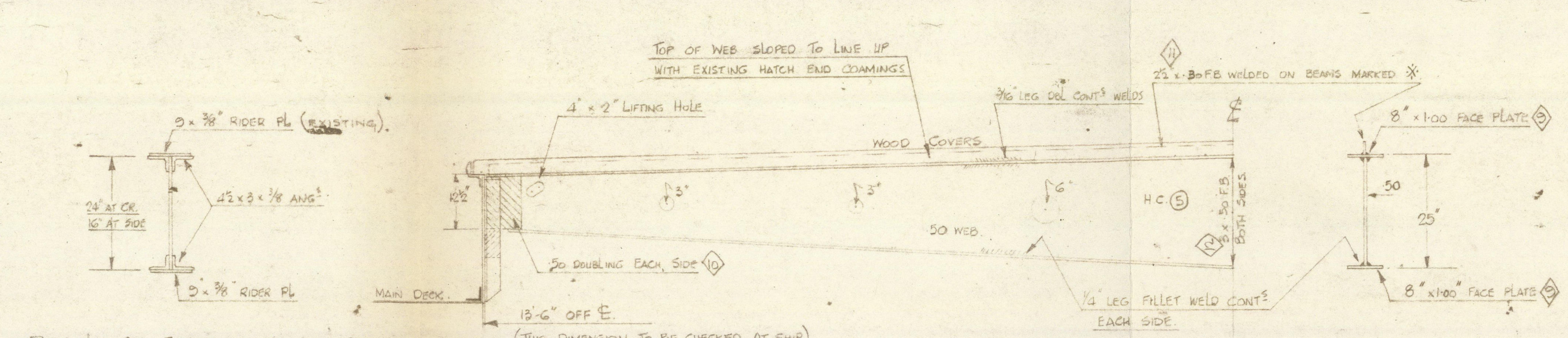


Notes:
WOOD COVERS TO BE AS SHOWN & FITTED WITH $2\frac{1}{2}$ " x $\frac{1}{8}$ " GALV. STEEL
BANDS ON ENDS, WELL SECURED. HATCH CLEATS OF $2\frac{1}{2}$ " x $2\frac{1}{2}$ " x $\frac{1}{8}$ " ANG. 
SPACED NOT MORE THAN 2'-0" C/S. 8" FROM CORNERS TO BE FITTED
LOCKING BARS, BATTENS, WEDGES & TAPPIRULINS AS REQUIRED BY
B.C. RULES.

[illegible]

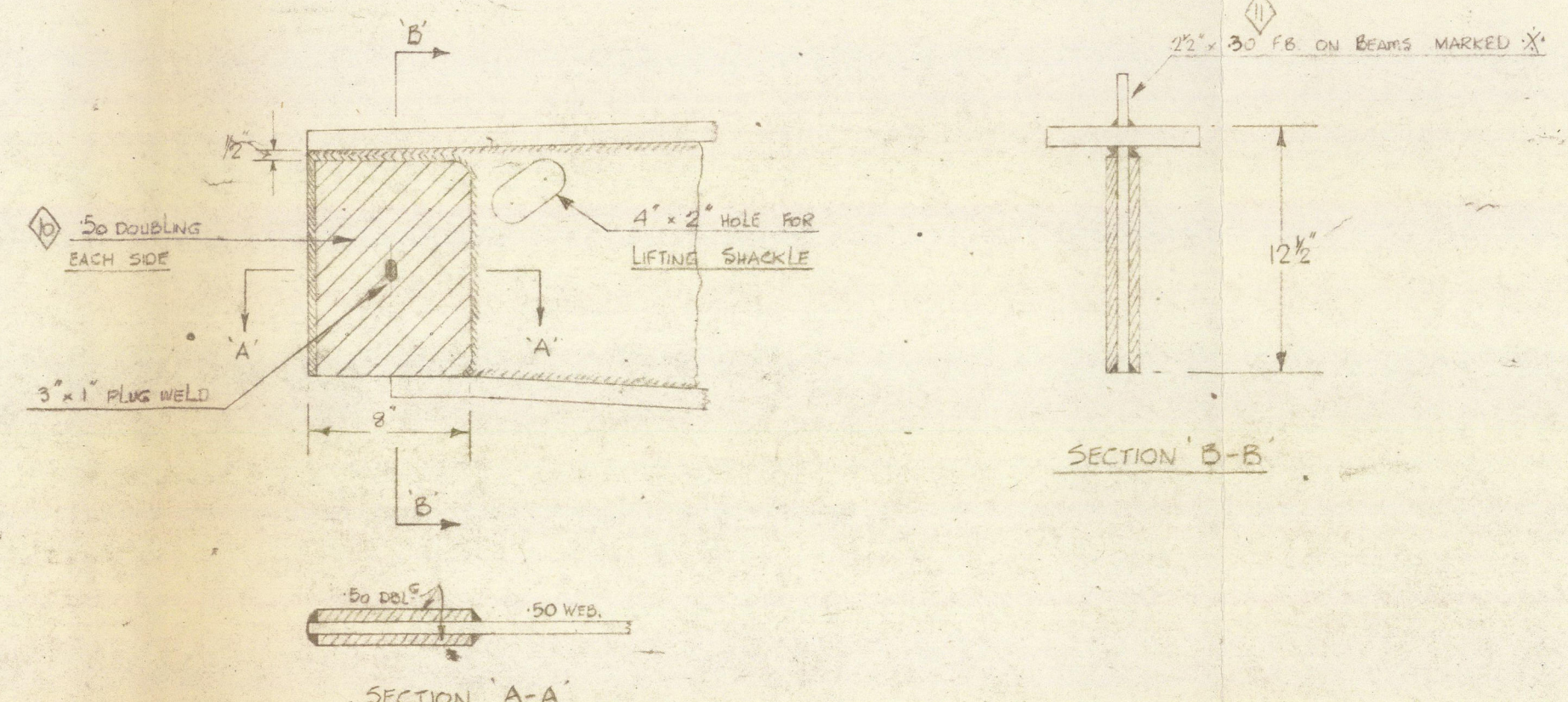
F INDICATES FLUSH HEAD OR POINT. 12. CCK HOLES & SLIGHTLY
RAISED POINTS.

ALL RIVETING & WELDING TO SURVEYORS SATISFACTION.

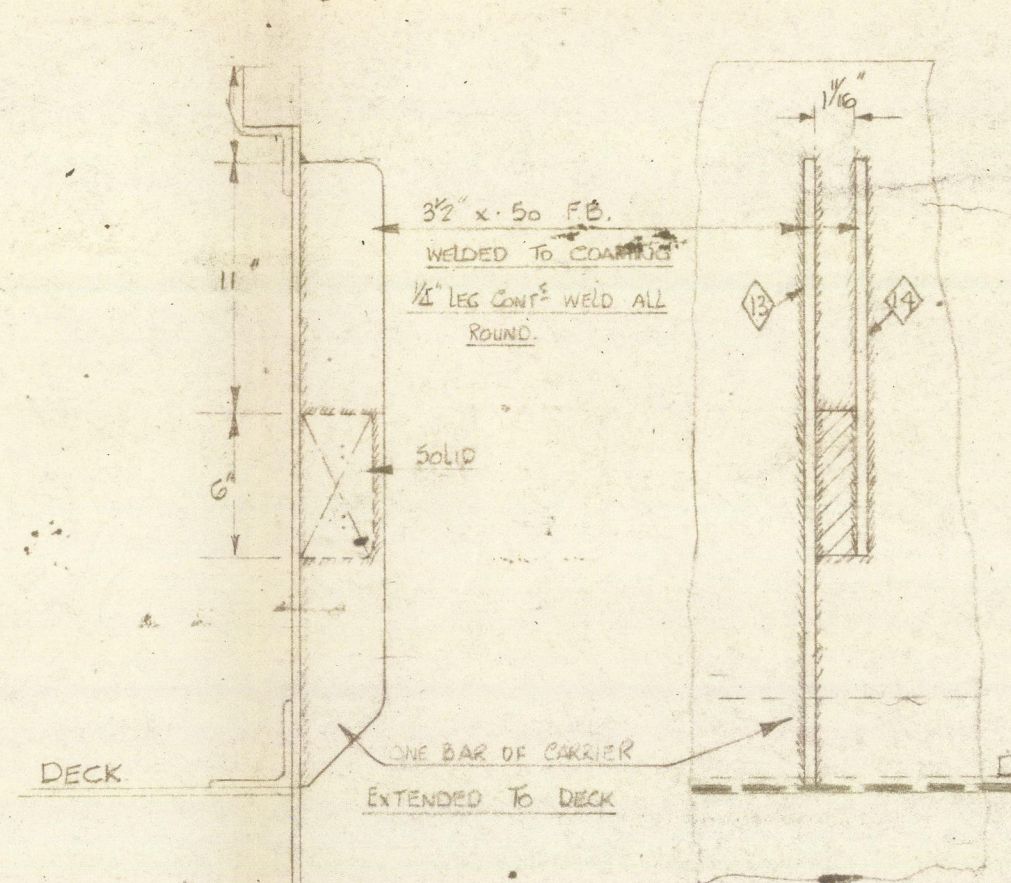


DETAIL OF EXISTING HATCH BEAM.
SCALE: $\frac{1}{2}$ " = 1'00"

DETAIL OF HATCH BEAMS
SCALE: $\frac{1}{8}" = 1 \text{ FOOT}$

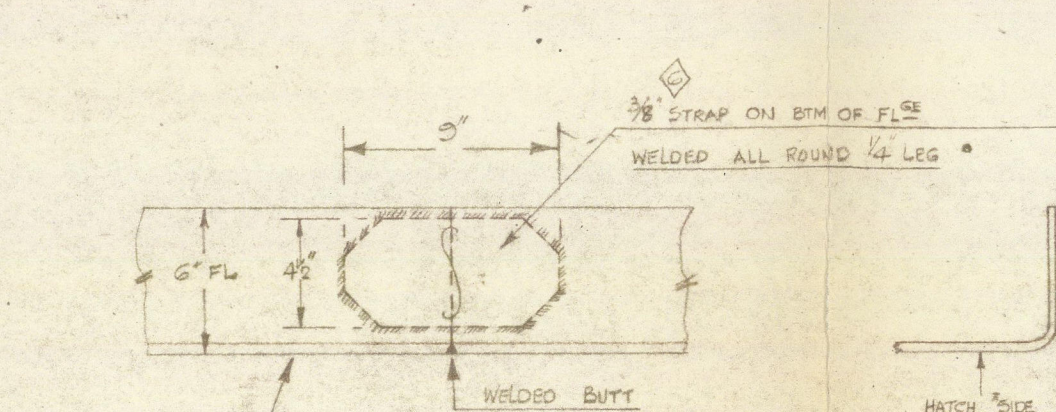
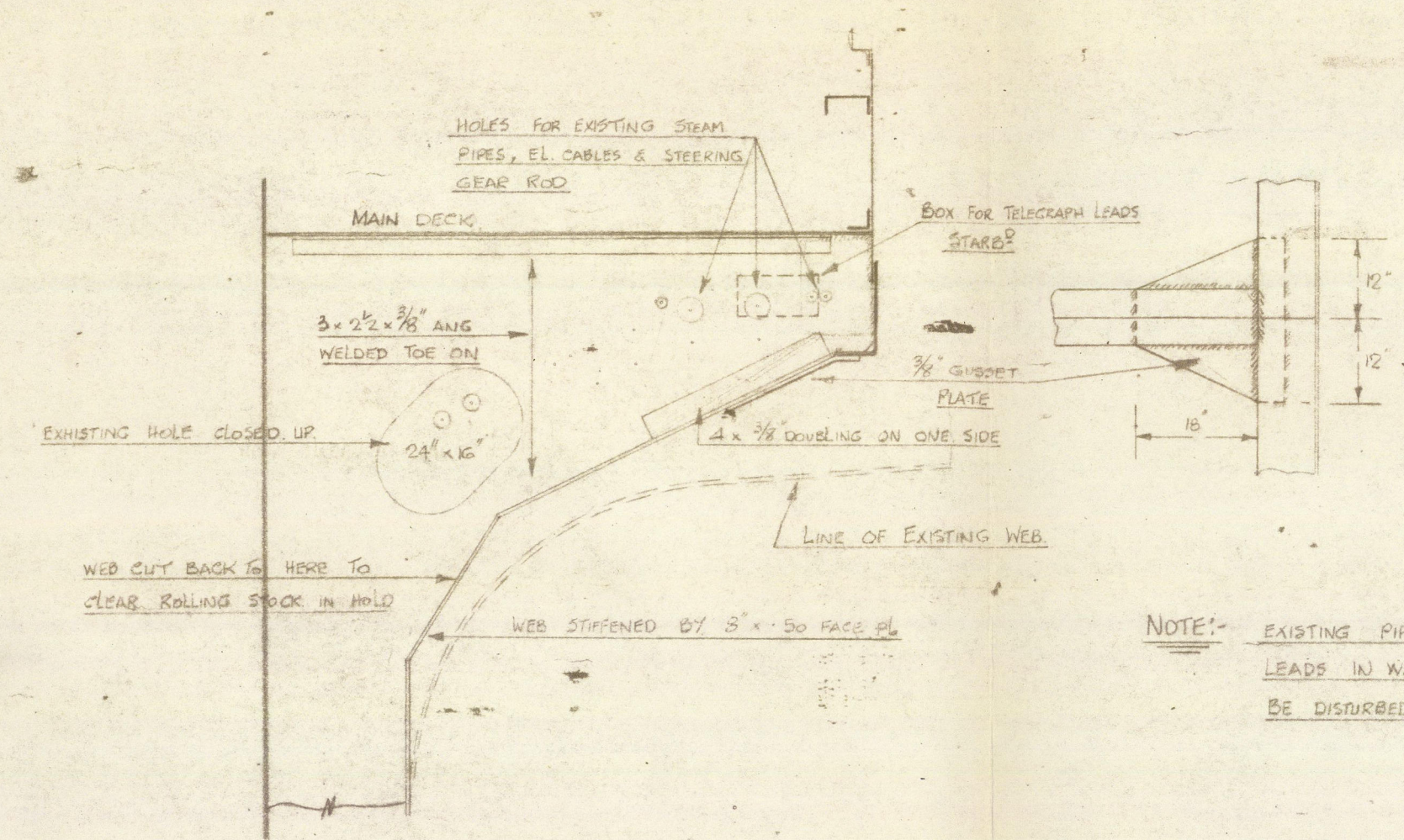


DETAIL OF HATCH BEAM ENDS
SCALE: 1/2" = 1 FOOT.



DETAIL OF HATCH BEAM CARRIERS
SCALE. 1/2" = 1 FOOT

FOR STIFFENING UNDER MASTS & DERRICK POSTS. SEE SEPARATE PLAN NO R-136.
SEE PLAN OF TRANSVERSE WEBS FOR DETAILS & CLEARANCES. PLAN NO R-136G.



DETAIL OF WELDED BUTTS
HATCH SIDE GIRDER
SCALE 1/2" = 1 FT.

File	Date	Reference	By
DAVE SHIPBUILDING & REPAIR CO. LTD.			
LAUZON LEVIS, P. Q. CANADA			
HULL NO. P. 619			

20. 3. 52	C.S. 1	APPROVED
17. 3. 52	LLOYDS	To B.C. R.
DATE	AUTHORITY	REMARKS
APPROVALS.		

HATCH 5E GIRDERS & HATCH BEAMS

© 2020

Scale - 1/4" = 1' 0"

11. 5. 52

Comp. No.

DWG. NO. R-1265

Lloyd's Register Foundation

No 2

S.S. "EASTON"

HATCH SIDE GIRDERS &
HATCH BEAMS

Int Rpt 9009



© 2020

Lloyd's Register
Foundation

002583-002591-0136