

THE BRITISH CORPORATION REGISTER OF
SHIPPING AND AIRCRAFT

"FRESHWATER" SURVEY FOR FREEBOARD

STEAMER, ~~TANKER, SAILED~~ ~~EMPIRE FASHION~~ ~~WITHOUT~~ ~~TIMBER DECK CARGO~~

Nationality BRITISH

Builders' Name and No. of Ship GOOLE S.B. & R. CO

Port of Registry GOOLE LONDON
CODE LETTERS MLXNOwners GOOLE N° 420
MESSRS. F.T. EVERARD & SONS.

Official Number 180122

(M&S) MINISTRY OF WAR TRANSPORT.

Gross Tonnage 409.77

(M&S) JAMES FISHER & SONS LTD.

Date of Build JULY 1944

Port and Date of survey GOOLE, DURING CONSTRUCTION.

Name of Surveyor E. HENDERSON

Particulars of Classification B.S.* (COASTING SERVICE)

Names of Sister Ships EMP. FACTOR, FAIRHAVEN etc

Type of Superstructures POOP AND FORECASTLE

Trade of Ship

Service Endorsement if any

SUMMER FREEBOARD recommended amidships from centre of disc to top of deck line, (.....wood.....steel)

TROPICAL FRESH WATER LINE above centre of disc	2½"	Corresponding Freeboard	1' 6"
FRESH WATER LINE " " "	2½"	" "	1' 3½"
TROPICAL LINE " " "	0	" "	1' 3½"
WINTER LINE below " "	2½"	" "	1' 6"
WINTER NORTH ATLANTIC LINE " " "	4½"	" "	1' 8½"
		" "	1' 10½"

SUMMER TIMBER FREEBOARD recommended amidships from top of deck line

TROPICAL FRESH WATER Timber line above L.S.

FRESH WATER " " " "	Corresponding Freeboard
TROPICAL " " " "	" "
WINTER " " below " "	" "
WINTER NORTH ATLANTIC " " " "	" "

Number of years recommended for load line certificate

The scantlings and protective arrangements being in accordance with the Load Line Rules it is submitted that the freeboards be assigned

Chief Surveyor

Passed at a meeting of the Committee of Management of the British Corporation Register of Shipping and Aircraft

on the 6TH SEPTEMBER 1944



© 2020

Lloyd's Register
Foundation
Secretary

002583-002591-0110½

COMPUTATION OF FREEBOARD

Length on summer load line 141'-0" Moulded Breadth 27'-0" Moulded Depth 11'-0" Depth of Keel 1/2"
 Moulded displacement (ex bossing) at moulded draught of 85 per cent. of moulded depth 725 Tons @ 9'4 3/16"

Co-efficient of fineness for use with tables $\frac{\Delta \times 35}{L \times B \times D \times 85} = .7130$

Displacement and tons per inch immersion in salt water at summer load line 742 Tons 7.95 @ 9.5 FT

Moulded depth 11.000 Deduction for Fresh Water $\frac{\Delta}{40T} = 2.333$ inches
 Stringer Plate 3/8 .031 Round of Beam Correction
 Sheathing on exposed deck T $(\frac{L-S}{L})$ - Ships Round of Beam 0.00 inches
 Rise of floor (in sailers) - Standard Round of Beam $\frac{B \times 12}{50} = 6.48$
 Depth for Freeboard (D) 11.031 Difference 6.48
 Table Depth 4/15 9.400 Restricted to
 Depth Correction 4/130 1.631 Correction $\frac{\text{Difference}}{4} \times (1 - \frac{E}{L}) = 1.62 \times .2262$
 If restricted by superstructures 1.769 ON = .3665 ON

	Enclosed Length	Length of Overhang	Height	Mean Covered Length (S)	Height Correction	Effective Length (E)
Poop	37'-6 3/4"	-	7'-0"	41.26		41.26
Raised Quarter Deck						
Bridge		F				
		A				
Forecastle	13'-8 1/16"	1'-10"	8'-0"	15.63		14.83
Trunk Aft	35'-1"		7'-0"		18/27	23.39
" Forward	27'-10"		3'-4"		$\frac{18 \times 2.67}{27 \times 6}$	8.26
Forecastle Opening Aft	18'-10"				$\frac{14 \times 2.67}{27 \times 6}$	4.56
" " Forward						
Totals				56.89		92.30

Standard Height of Superstructure 6'-0"

" " R.Q.D. -

Percentage covered S/L = 40.34%

" " E/L = 65.46%

" from Table line A, B, (corrected for absence of forecastle if required) 55.28%

Percentage from Table by interpolation for Bridge

less than .2L if required =

Deduction = 20.1 x .5528 11.11 OFF

Percentage from Table for Tankers (or Timber ships) =

Deduction =

2.67 FOR LOW COMING ON HATCH FORWARD
 $\frac{23.39}{18.56} = 1.26$
 $\frac{10.26}{52.21} = .196$
 $\frac{52.21}{109.10} = .478$
 $\frac{5}{L} = 77.38\%$

Station	Actual Sheer	Standard Sheer	Effective Sheer	S.M.	Product
A.P.		24.1	-	1	-
1/3 L from A.P.		10.72	-	4	-
1/3 L from A.P.		2.61	-	2	-
Amidships		5.22	-	4	-
1/3 L from F.P.		21.44	-	4	-
1/3 L " "		48.2	-	1	-
F.P.			-	1	-
			18		

Mean Actual sheer aft = LESS THAN 1

Mean Actual sheer forward = LESS THAN 1

Length of enclosed superstructure forward of amidships =
 Length of Ship

Length of enclosed superstructure aft of amidships =
 Length of Ship

Sheer Correction = Difference X $(.75 - \frac{S}{2L}) = 12.05 \times .5483 = 6.607$ ON

Effective Mean Sheer =

Standard " " .05L + 5 =

Difference

If limited on account of midship superstructure =

" to maximum allowance of 1 1/2 ins. per 100 ft. =

TABULAR FREEBOARD corrected for flush deck if required = 14.33

Correction for co-efficient = 1393/136 = 14.68

draughts and seasonal corrections

	+	-
Depth correction	1.77	-
Deduction for superstructures	-	11.11
Sheer correction	6.61	-
Round of Beam correction	.37	-
Correction for thickness of deck amidships	-	-
Other corrections, scantlings, etc.	5.68	-
	14.43	11.11
		3.32

Summer Freeboard in inches 1'-6" = 18.00

Additional allowance for superstructures on

Timber carrying ships =

Summer Timber Freeboard in inches =

	Sailer, Tanker, Steamer	Timber
Depth to Freeboard Deck in feet	11.031	
Summer Freeboard in feet	1.500	
Moulded Draught (d)	9.531	(d1)
Addition for Keel 1/2"	.042	
Extreme draught	9.573	

Deduction for Tropical and addition for Winter freeboard d/4 = 2 1/2 ins.

Addition for Winter North Atlantic (if required) = 4 1/2 ins.

Deduction for Tropical Timber Freeboard $\frac{d1}{d}$ = ins.

Addition for Winter " " $\frac{d1}{3}$ = ins.

N.A. Timber Freeboard (if required) = ins.

X DRAUGHT IN S.W. RESTRICTED

Lloyd's Register Foundation

THE BRITISH CORPORATION REGISTER OF SHIPPING AND AIRCRAFT

SURVEY FOR FREEBOARD

CONDITIONS OF ASSIGNMENT

SHIPS NAME "EMPIRE FASHION"

OFFICIAL NUMBER 180122

Nationality and Port of Registry BRITISH, GOOLE.

PARTICULARS OF SUPERSTRUCTURES, TRUNKS, CASINGS, DECKHOUSES

	Coaming	Plating	Stiffeners	Spacing	End Attachments	No. and size of Openings	Height of Sills	Height of Casings
Poop Bulkhead		5/16 x 1/4	5' x 5/16	2' 3"	WELDED	2 @ 10' DIA	5' 7"	7' 0"
R.Q.D. "								
Bridge Aft Bulkhead								
" Forward "								
Forecastle Bulkhead		5/16	3' x 3 x 1/4	2' 0" + 2' 6"	"	2 @ 4' 1" x 1' 10"	1' 3"	8' 0"
Trunk, Aft	5/16	1/4	4 x 5/16: 3/2 x 5/16	1' 8" + 1' 10"	"	-	-	7' 0"
" Forward		5/16	4 x 5/16	1' 8"	"			3' 4"
Exposed Machinery Casings on } Freeboard or R.Q. Decks }								
Exposed Machinery Casings on } superstructure decks }	5/16	1/4	4 x 5/16	1' 9"	WELDED AT TOP BKT. AT BOTTOM	3 @ 4' 11" x 1' 9"	1' 6"	8' 3"-8' 5"
Machinery Casings within Super- structures not fitted with Cl. 1 closing appliances }								
Deckhouses on flush deck ships								

PARTICULARS OF CLOSING APPLIANCES (state if capable of being manipulated from both sides)

Poop Bulkhead	NO OPENING
R.Q.D. "	-
Bridge Aft Bulkhead	-
" Forward "	-
Forecastle Bulkhead	HINGED STEEL DOORS OPENING BOTH SIDES
Exposed Machinery Casings on } Freeboard or R.Q. decks }	
Exposed Machinery Casings on } superstructure decks }	
Machinery Casings within super- structures not fitted with Cl. 1 Closing Appliances }	
Deck houses on Flush Deck ships	

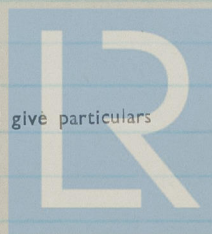
PARTICULARS OF FREEING ARRANGEMENTS

	Length of Bulwark	Height of Bulwark	No. and size of Freeing Ports each side	Area each side	Rule Area
After Well					
Forward Well	SEE SKETCH				

State fore and aft position and height above } After Well
deck to bottom of port, for each port }
Forward Well

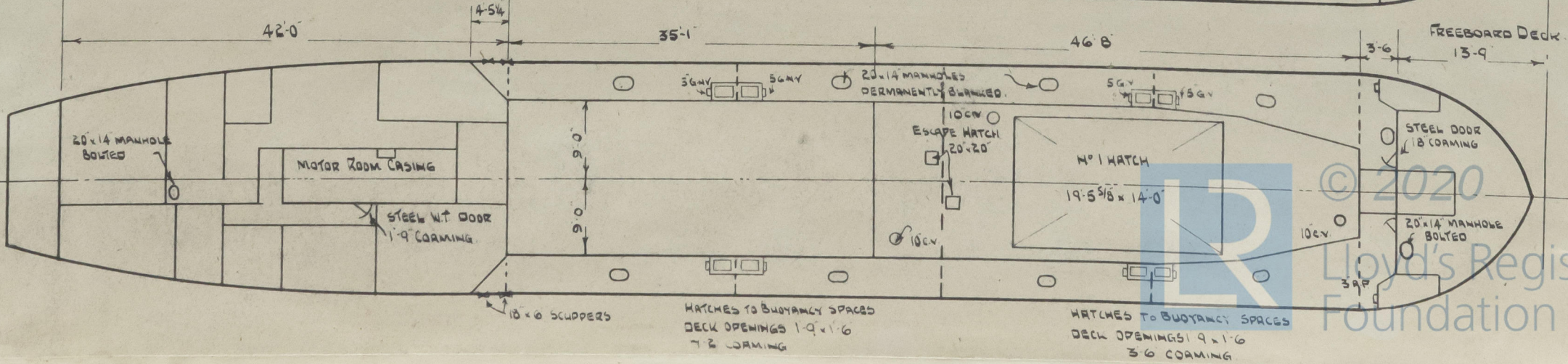
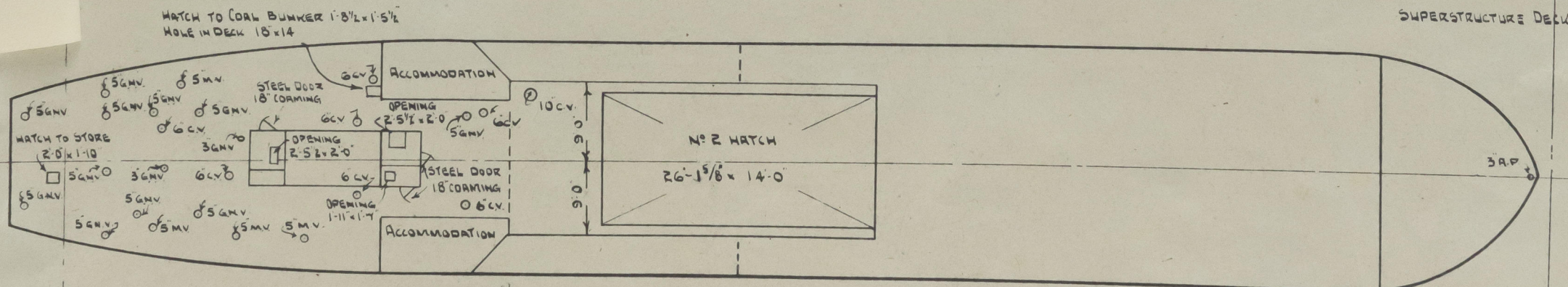
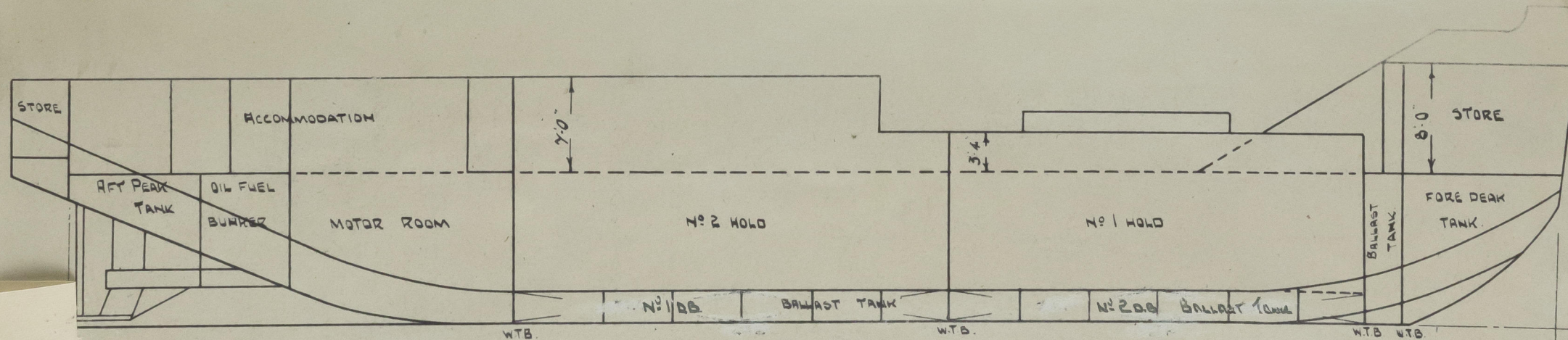
State whether freeing ports are fitted with shutters, bars or rails, and give particulars

Give particulars of freeing port area, etc., on superstructure decks



© 2020

Lloyd's Register
Foundation



© 2020
Lloyd's Register
Foundation

Scuppers and Sanitary Discharge Pipes (state material, type and number of valves)

[illegible]

Side Scuttles to spaces below freeboard and superstructure decks (state type or pattern, and if permanent or portable deadlights are supplied)

10" DIA. CLEAR GLASS HINGED SIDE LIGHTS IN POOP SIDES WITH PERMANENT DEAD LIGHTS.
8" " " " " " " FORECASTLE " " " "

Vertical distance of sill of lowest side scuttle below top of freeboard deck at side amidships

Guard Rails on freeboard and superstructure decks (state type and where fitted)

3" x 2 1/2" STANCHIONS WITH 1 TOP RAIL & 2 LOWER RAILS IN WAY OF CARGO HATCHES.

Gangways and Lifelines

SHORE GANGWAY

$1\frac{3}{4}$ " STEEL WIRE LIFELINE FROM POOP FRONT TO FORECASTLE FRONT.
 $1\frac{3}{4}$ " " " FITTED AROUND EACH HATCH.

Gangway, Cargo and Coaling Ports in sides of ship

ZONE

© 2020

Lloyd's Register
Foundation

SUPPLEMENTARY REQUIREMENTS FOR STEAMER CARRYING TIMBER DECK CARGOES

Do Superstructure and Machinery Casings comply with rules?

Is provision made for protection of steering gear?

Is emergency steering gear provided?

Are efficient sockets and eyes for lashings provided and properly spaced?

State particulars of longitudinal subdivision in double bottom

State particulars of Bulwarks and Rails

Particulars of any Special Features in the construction of the Ship

Endorsement at first survey and at surveys for Renewal of Certificate:—

The fittings and appliances are in accordance with the particulars shown in the form and are in good condition

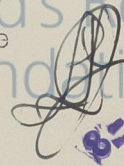


© 2020

Lloyd's Register
Foundation

As this vessel is less than 250'-0" in length
the Freeboard Report has not been compared with the
approved plans.

002583-002591-0110 ²/₂


81 AUG 1950