

425'-0" BP x 54'-3" B.M. x 31'-0" DM TO UPPER DECK.

AFTER END FRAMING

SCALE $\frac{1}{8}"$ & $\frac{1}{4}"$ = 1 FOOT

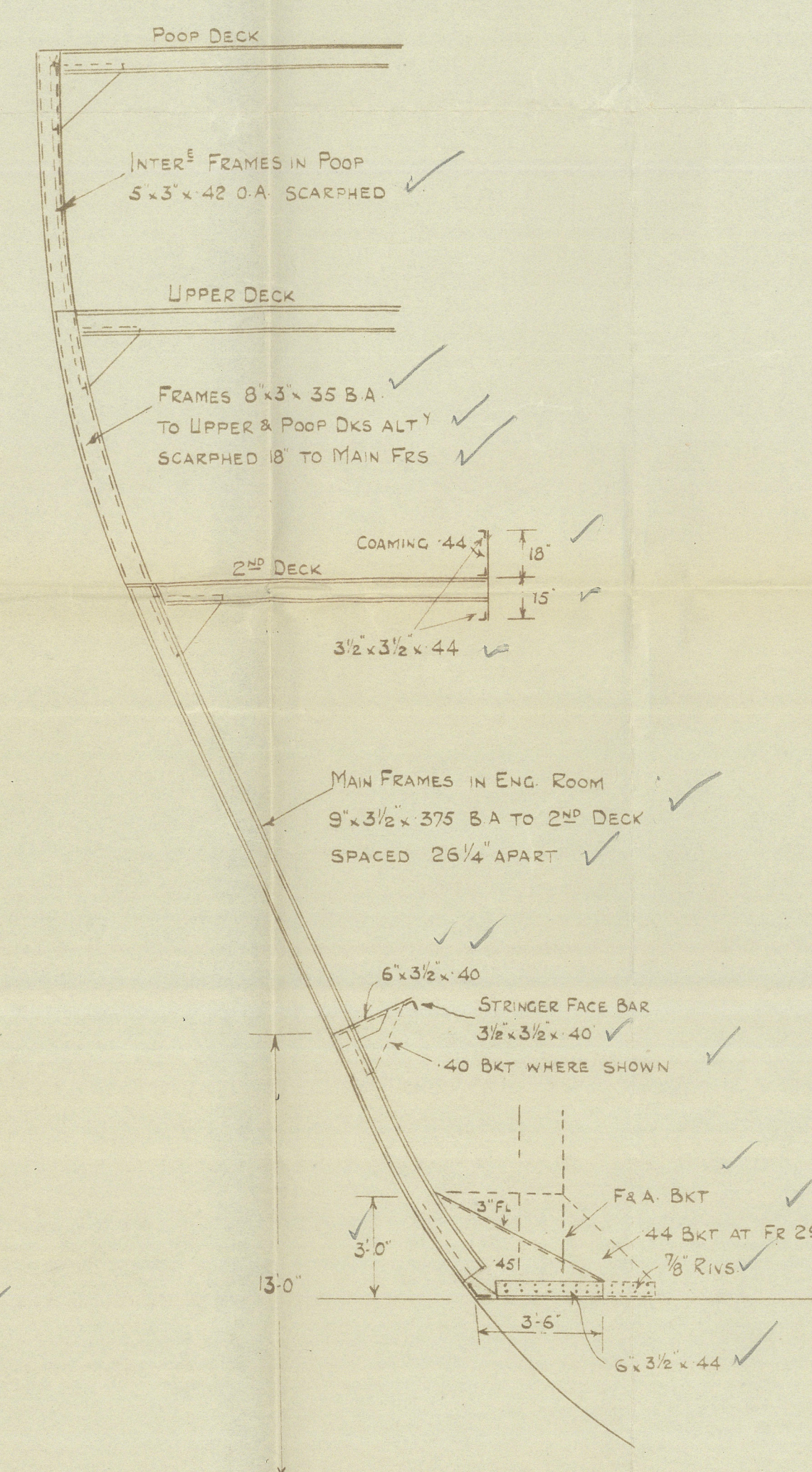
CENTRE GIRDER 65" x 44 ✓
 MARGIN PLATE 51 ✓
 TANK TOP PLATING 50" - 42 ✓
 KEEL ANGLES 4"x4" 57" - 53' ✓
 CR GIRDER TOP ANGLES 3½"x3½"x 51" - 48' ✓
 FRAMES 3½"x3½"x 42 ✓
 REV FRAMES 3½"x3½"x 42 DOUBLE ✓
 FLOORS 40

ENGINE & THRUST SEATING TO BE SUBMITTED ✓
TO BE TO OWNERS & ENG^{NS} REQUIREMENTS
ADDITIONAL GIRDERS UNDER ENGINES & THRUST

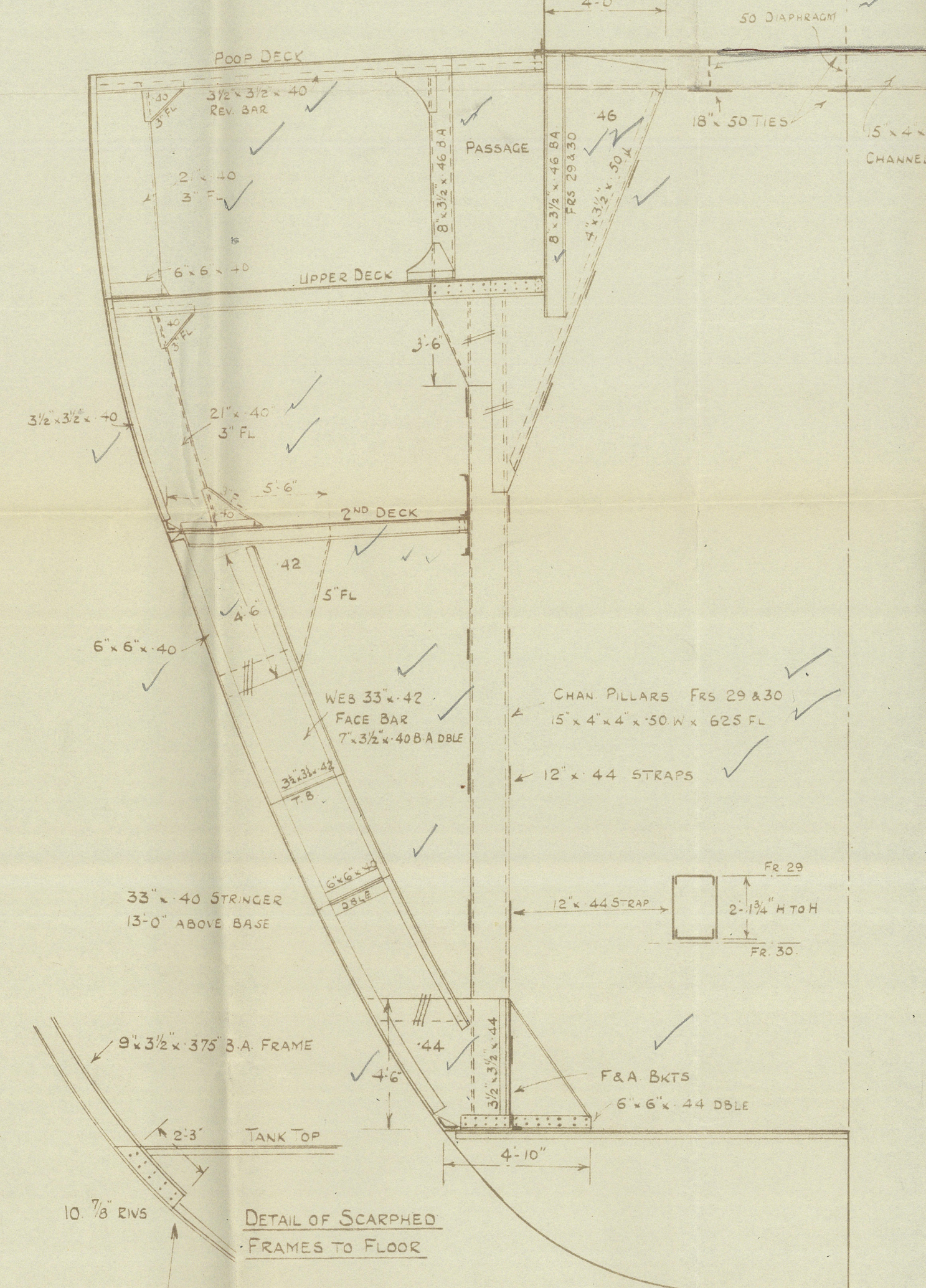
PLAN OF SCARPHIN
TO BE SUBMITTED

THICKNESS OF PLATIN
TO BE CONSIDERED.

SUITABLE ARRANGEMENTS TO SURVEYORS
SATISFACTION TO BE MADE IN WAY OF
CONCENTRATED LOADS



SECTION AT FR 15



SECTION AT FR. 30

SECTION AT FR 25.

SECTION AT FR 21.

SECTION AT FR 35

"ERODONA"

NEW AFTER END

AFTER END FRAMING

Nwc repl No. 101898



© 2021

Lloyd's Register
Foundation

002577-002582-0123