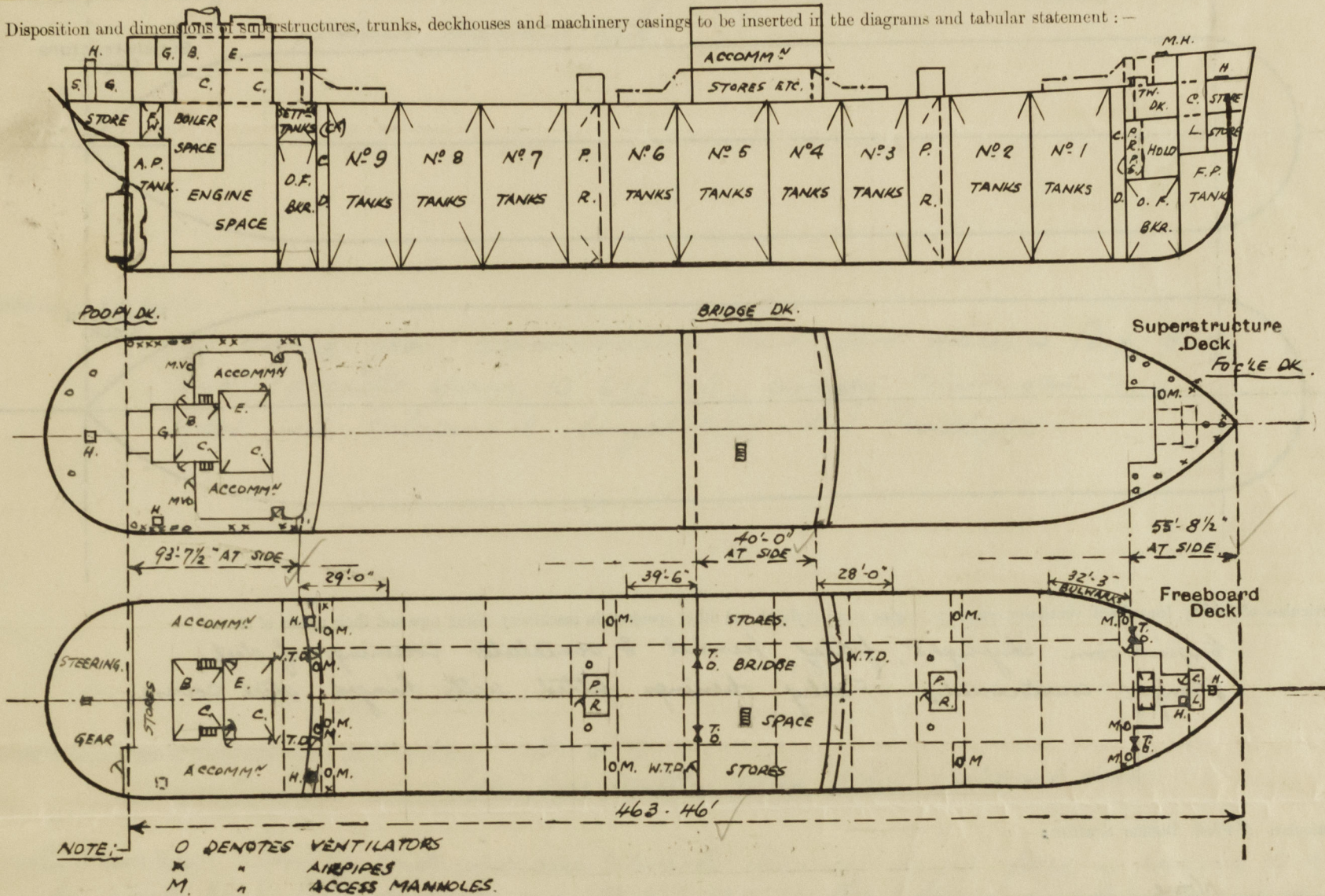


Lloyd's Register of Shipping.  
SURVEYS FOR FREEBOARD.  
(CONDITIONS OF ASSIGNMENT.)

N<sup>o</sup> 34690

Ship's Name *M.V. "BRITISH FERN"* Port of Survey *Sunderland*  
Official Number \_\_\_\_\_ Surveyor's Signature *D. Forsyth*  
Nationality and Port of Registry *British, London* Date of Survey *During Construction.*

Disposition and dimensions of superstructures, trunks, deckhouses and machinery casings to be inserted in the diagrams and tabular statement:—

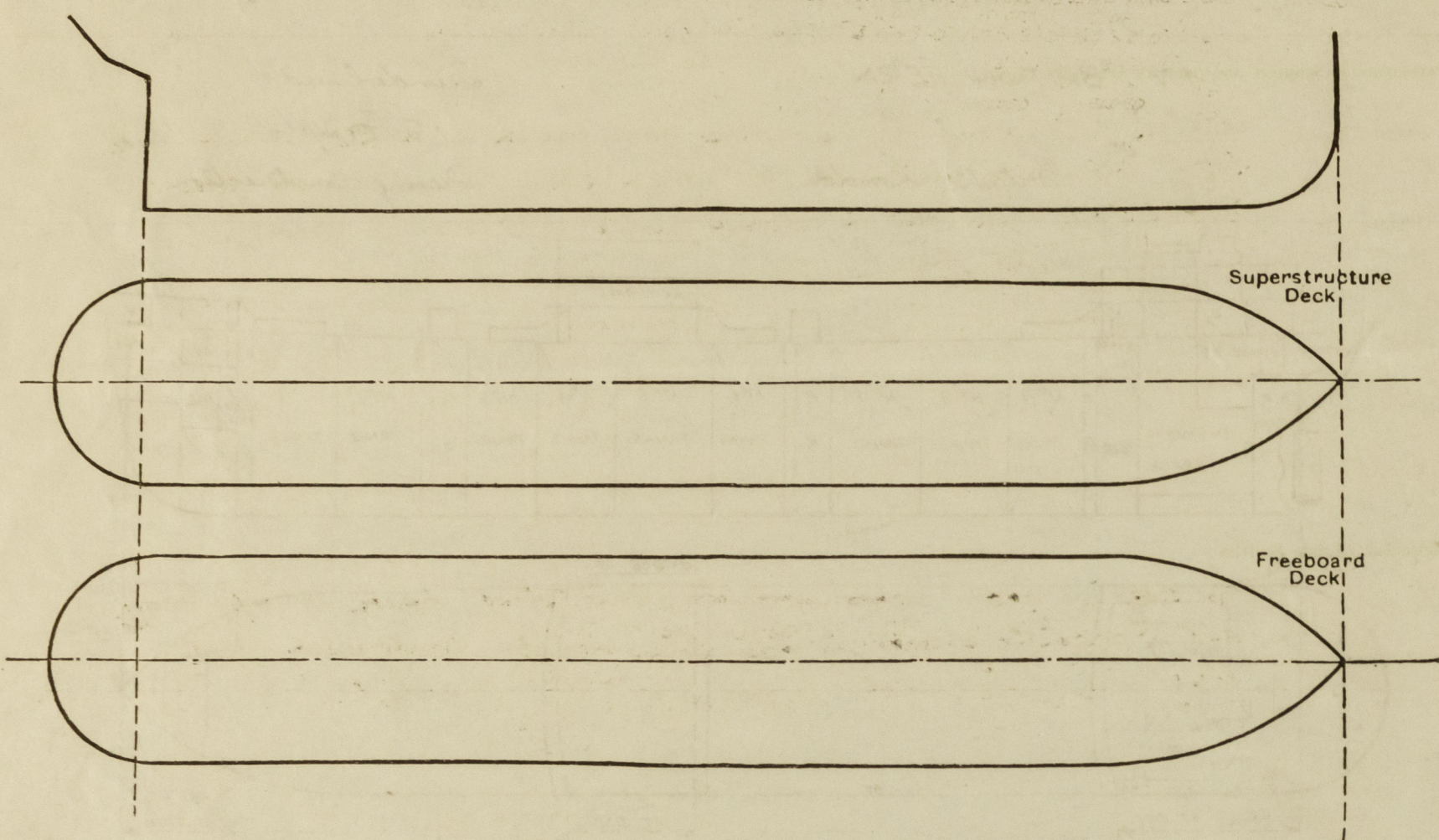


Particulars of Superstructures, Trunks, Casings, Deckhouses.								
	Coaming	Plating	Stiffeners	Spacing	End Attachments of Stiffeners	Size of Openings	Height of Sills	Height of Casings
Poop Bulkhead ...	.44"	.44"	10" x 3 1/2" x .40"	30"	Lugged at top, welded at bottom	2 @ 5'-0" x 3'-0"	18"	8'-0"
Raised Quarter Deck Bulkhead ...	✓							
Bridge, After Bulkhead ...	.30"	.30"	4" x 3" x .32"	30"	Riveted to boundary angle	2 @ 4'-1" x 3'-1"	19"	
Bridge, Forward Bulkhead ...	.44"	.44"	10" x 3 1/2" x .40"	30" - 33"	Lugged at top, welded at bottom	1 @ 4'-8" x 2'-3"	18" (W.T.D.)	8'-0"
Forecastle Bulkhead ...	.31"	.31"	4" x 3" x .32"	24" & 27"	Riveted to boundary angle	2 @ 4'-1" x 3'-1"	19"	
Trunk, Aft ...	✓					1 @ 4'-8" x 2'-3"	18"	8'-0"
Trunk, Forward ...	✓					1 @ 4'-8" x 2'-0"	19"	
Exposed Machinery Casings on Freeboard or Raised Quarter Decks ...	✓							
Exposed Machinery Casings on Superstructure Decks ...	.30"	.26"	3 1/2" x 3" x .32"	30"	Bracketed at top, none at bottom	2 @ 4'-3" x 2'-3"	18"	12'-6"
Machinery Casings within Superstructures not fitted with Class I Closing Appliances ...	✓							
Deckhouses on Flush Deck Ships ...	✓							
Particulars of Closing Appliances (state if capable of being manipulated from both sides).								
Poop Bulkhead ...	Hinged Steel W.T. doors, operated from both sides.							
Raised Quarter Deck Bulkhead ...	✓							
Bridge, After Bulkhead ...	Shifting boards in full height channels, & hinged steel W.T. door, operated both sides.							
Bridge, Forward Bulkhead ...	Hinged steel W.T. door, operated both sides.							
Forecastle Bulkhead ...	Shifting boards in full height channels, & hinged steel W.T. door, operated both sides.							
Exposed Machinery Casings on Freeboard or Raised Quarter Decks ...	✓							
Exposed Machinery Casings on Superstructure Decks ...	Hinged steel W.T. doors, operated both sides.							
Machinery Casings within Superstructures not fitted with Class I Closing Appliances ...	✓							
Deckhouses on Flush Deck Ships ...	✓							



# PARTICULARS OF PROTECTION TO OPENINGS, ETC.

The following diagrams should be used to indicate the positions of cargo and coaling hatchways, gangway, cargo and coaling ports, ventilators, companionways, etc., which would affect the seaworthiness of the ship:—



Particulars of fiddle, funnel and ventilator coamings, engine room skylight and other openings in machinery casing tops and their means of closing:—

Engine room skylight, fiddle, funnel & ventilator coamings of steel strongly constructed. Fiddle openings fitted with hinged steel covers.

Particulars of Flush Bunker Scuttles:—

None

Particulars of Companionways:—

Midship & Forward Pump Room Entrances:— Plating 30", stiffeners 4" x 3" x 30", but with 3" x 3" x 30" reverse bar fitted at forward bulkheads, spaced 30" apart & bracketed top & bottom. Deck openings 6'-0" x 5'-0"; Steel skylights 6'-0" x 4'-6"; U.T. doors (operated both sides), 4'-3" x 2'-3", coamings 18" high.

Particulars of Ventilators in exposed positions on freeboard and superstructure decks:—

1 @ 8" dia.,	Cowl vent, coaming 36" x 30" to Fore peak store.	} On Forecastle Deck
3 @ 8" "	" " " 36" x 30" to Fore tween decks.	
2 @ 12" "	" " " 36" x 34" to Fore tween decks.	
1 @ 12" "	" " " 36" x 34" to Fore pump room (p.s.)	
2 @ 12" "	" " " 36" x 34" to Fore hold.	} On Upper Deck
2 @ 24" "	" " " 13'-0" x .40" to Fore Pump room (efficiently stayed)	
2 @ 24" "	" " " 13'-0" x .40" to Midship Pump room	
2 @ 6" "	" " " 30" x .30" to Steering gear	
2 @ 6" "	" " " 30" x .30" to Store rooms	} On Poop deck
1 @ 9" "	" " " 30" x .32" to Refrig. Mchys.	
2 @ 8" "	" " " 33" x .32" to Washplace	
4 @ 5" dia.,	goose-neck vents, 21" to openings to drying rooms etc. aft.	

All ventilators fitted with wood plugs and canvas covers.

Particulars of Air Pipes in exposed positions on freeboard, raised quarter, or superstructure decks:—

Airpipes of a patent type, and in accordance with approved plan of automatic vent pipes for oil fuel & water ballast tanks, (date 3/1/46).

Particulars of Gangway Cargo and Coaling Ports:—

British Fern.

None

Particulars of Scuppers and Sanitary Discharge Pipes:—

Scuppers and Sanitary discharges from spaces above the freeboard deck, fitted with brass automatic non-return storm valves at ship's sides. 7 off 5 1/2" x 2" slots cut in stringer angle each side to drain exposed freeboard deck.

Particulars of Side Scuttles:—

To steering gear, accommodation and store spaces in Poop, Bridge, and Forecastle spaces 10" & 12" dia., strongly constructed, and fitted with substantial hinged cast steel deadlights.

Vertical distance of Sill of lowest Side Scuttle above top of keel

39'-6"

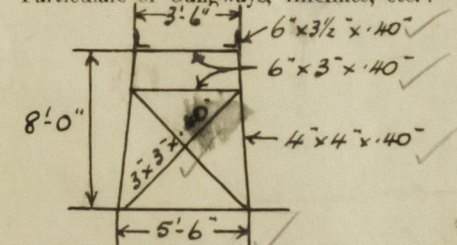
(No side scuttles fitted below freeboard deck)

Particulars of Guard Rails:—

Strongly constructed steel bulwarks, efficiently stayed, fitted on freeboard deck for about 32'-3" abaft Forecastle end, 28'-0" & 39'-6" at fore & after ends of Bridge respectively, and 29'-0" fore of Poop front; elsewhere on freeboard deck strong steel stanchions, 4'-0" in height above deck, spaced about 4'-6" apart with 3 rails; at Bridge deck sides efficient steel bulwarks 3'-6" high, and elsewhere on Bridge, Poop & Forecastle decks, stanchions 3'-9" & 3'-6" in height above deck, spaced about 4'-6" apart.

Particulars of Gangways, Lifelines, etc.:—

Fore & aft gangway from Forecastle to Bridge and Bridge to Poop, 8'-0" in height, supports spaced approximately 7'-0" to 8'-0" apart, fore & aft bracing, 5 off forward and 6 off aft. 25" chequer plating, strong steel stanchions, 3'-6" in height, spaced about 5'-0" apart with 2 rails.



Particulars of Freeing Arrangements. (Clear of open rails)

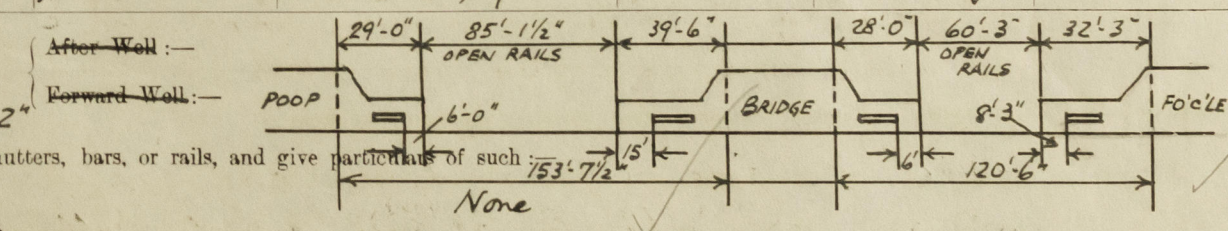
	Length of Bulwark	Height of Bulwark	Size of Freeing Ports	Number each side	Area each side	Rule area each side
ABFT FORE	32'-3"	4'-0"	12'-0" x 9"	1	9 sq ft	
AFT OF BRIDGE	28'-0"		12'-0" x 9"	1	9 sq ft	
ABFT BRIDGE	39'-6"		15'-0" x 9"	1	11.25 sq ft	
FORE OF POOP	29'-0"		15'-0" x 9"	1	11.25 sq ft	

State position of each freeing port ...

(F. and A. position and height above deck edge)

State whether the freeing ports are fitted with shutters, bars, or rails, and give particulars of such:—

Additional area where sheer is less than standard.

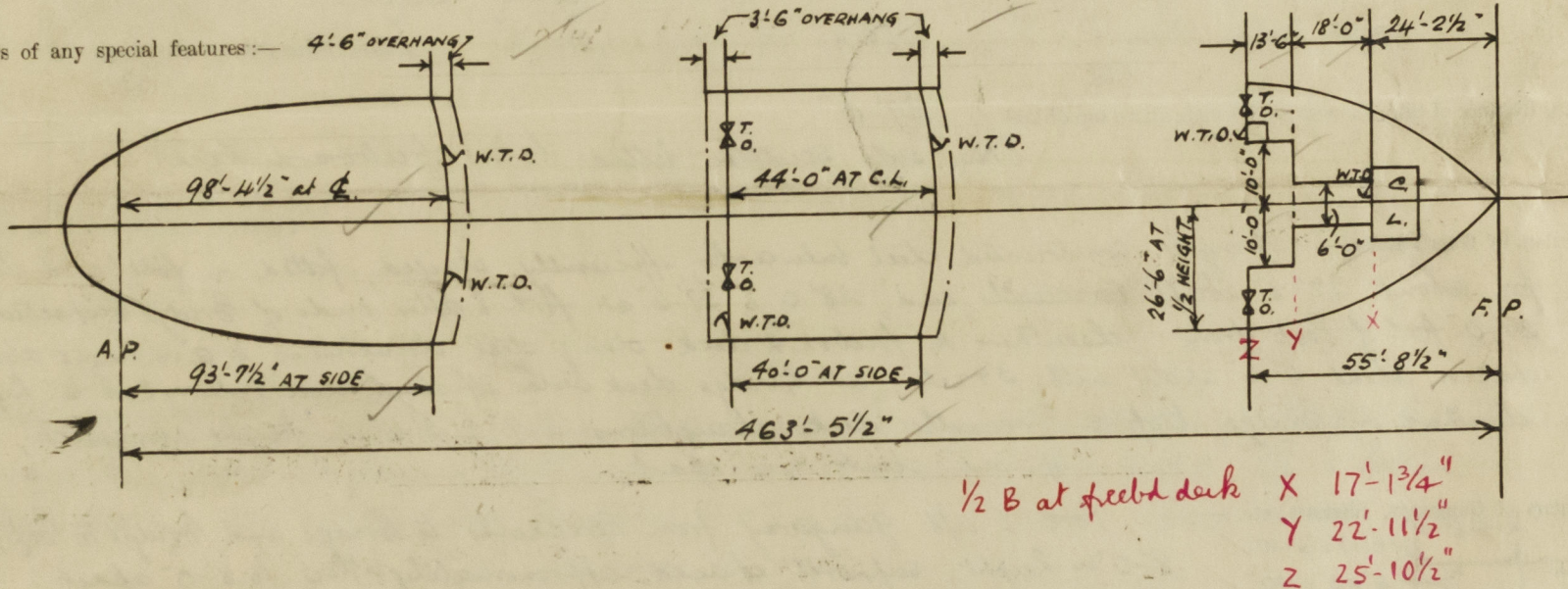




# PARTICULARS OF PROTECTION TO OPENINGS, ETC.

HATCHWAYS ON FREEBOARD AND SUPERSTRUCTURE DECKS.										
FREEBOARD DECK										
Description of Hatchway	O.T. HATCHES TO CARGO TANKS	CARGO HATCH TO FORE HOLD	TO F.P. STORE IN FOC'LE TW.	ACCESS TO FORE HOLD	O.T. HATCHES TO D.F. BUNKERS	ACCESS TO COFFERDAMS	ACCESS TO SETTLES TANKS	TO AFTER STORE	TO COLD STORES	TO FOC'LE TWEEN
Dimensions of Hatchway	6'-0" x 4'-0"	6'-9" x 10'-0"	3'-0" x 3'-0"	2'-6" x 2'-0"	3'-0" x 3'-0"	1'-7" x 2'-0"	1'-7" x 2'-0"	2'-6" x 2'-6"	2'-9" x 2'-9"	1'-6" x 2'-0"
COAMINGS	Height above Deck	12"	30"	9"	9"	30"	12 x 3 1/2 x .40	30"	30"	12"
	Thickness Sides	.50"	.44"	.40"	.40"	.40"	TDE WELDED	.30"	.40"	.38"
	Thickness Ends	.50"	.44"	.40"	.40"	.40"	TDE WELDED	.30"	.40"	.38"
	Stiffeners	✓	✓	✓	✓	✓	✓	✓	✓	✓
HATCH BEAMS	Brackets, Stays	✓	✓	✓	✓	✓	✓	✓	✓	✓
	Number									
	Spacing									
	Scantling and Sketch									
FORE AND AFTERS	Bearing Surface									
	Number									
	Spacing									
	Unsupported Lengths									
HATCH COVERS	Scantling and Sketch									
	Bearing Surface									
	Material	Steel .64"	Steel .50"	Steel .50"	Steel .50"	Steel .50"	Steel .50"	Steel .40"	Pine 2 1/2" F.E.A.	Steel .50"
	Thickness	.64"	.50"	.50"	.50"	.50"	.50"	.40"	3"	.50"
HATCH COVERS	How fitted	Hingrip	Hingrip (2 Sections)	Hingrip	Hingrip	Portable	Portable	Hingrip		Hingrip
	Bearing Surface									
Spacing of Cleats	16 Toggles	24 Toggles & 5 Bridge Toggles	6 Toggles	6 Toggles	7 Toggles	3/4" Bolts spaced 4" apart	3/4" Bolts spaced 4" apart	7 Toggles	2 Cleats per side	5 Toggles
Number of Tarpaulins	✓	✓	✓	✓	✓	✓	✓	✓	✓	✓
*Are wood fore and afters steel shod at all bearing surfaces? <input checked="" type="checkbox"/> Yes Are battens and wedges efficient and in good condition? <input checked="" type="checkbox"/> Yes Are tarpaulins in good condition and in accordance with rule requirements? <input checked="" type="checkbox"/> Yes Are lashings provided in accordance with rule requirements? <input checked="" type="checkbox"/> Yes										

Particulars of any special features:—



Endorsement at first survey and at surveys for renewal of Certificate:—

The fittings and appliances are in accordance with the particulars shown on this form (or as now modified) and are in good condition.

NOTE:— Sheer Height at A.P. if the sheer curve were continued 4'-8"  
 Height of Poop deck at side above the projected sheer curve  
 at the A.P. = 7'-10 7/8"