



N^o 1696-8.

RUDDER - PLAN

SCALE $\frac{1}{2}$ " = 1 FOOT

RUDDER STOCK OF FORGED STEEL.

TOP GUDGEON PIECE & OTHER GUDGEONS TO BE FIRTINGS OR CASTINGS.

SPACING OF RIVET HOLES NOT TO EXCEED THAT SHOWN ON PLAN.

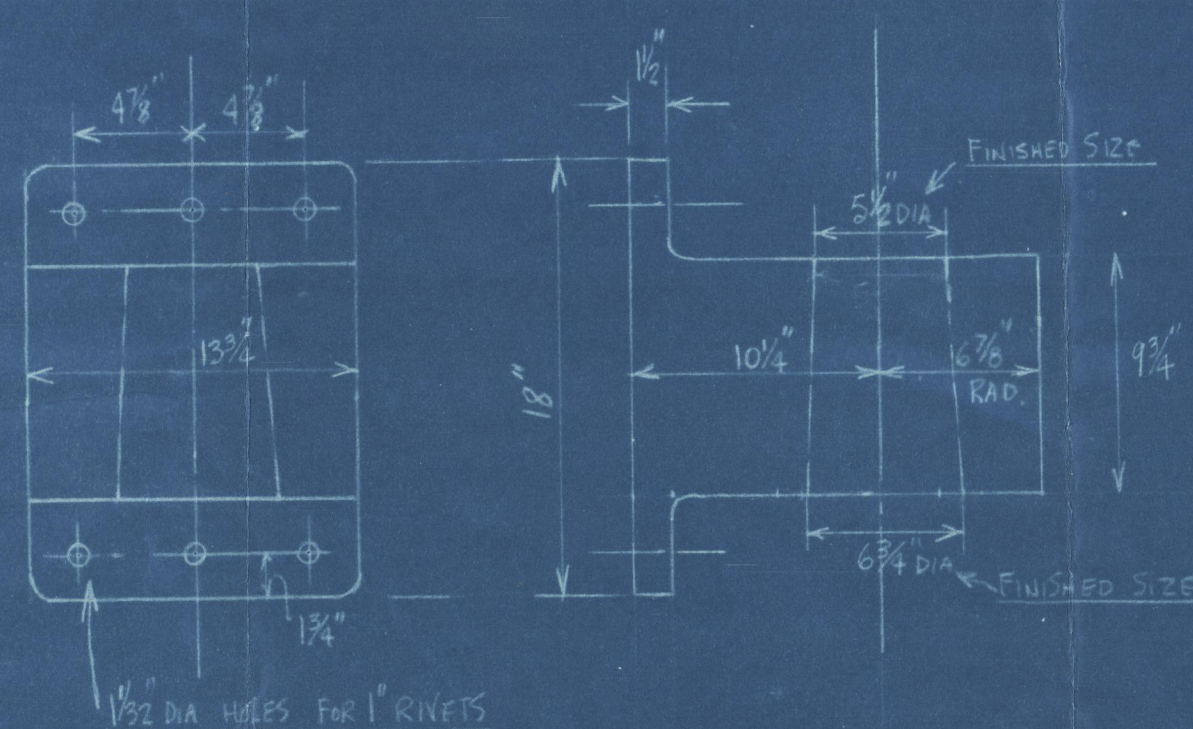
RUDDER STOCK TO BE TURNED TO GAUGE & KEYWAYS FOR TILLER ETC.

TO BE ACCURATELY CUT TO DIMENSIONS WHICH WILL BE SUPPLIED LATER.

LENGTH OF RUDDER STOCK TO BE CONFIRMED.

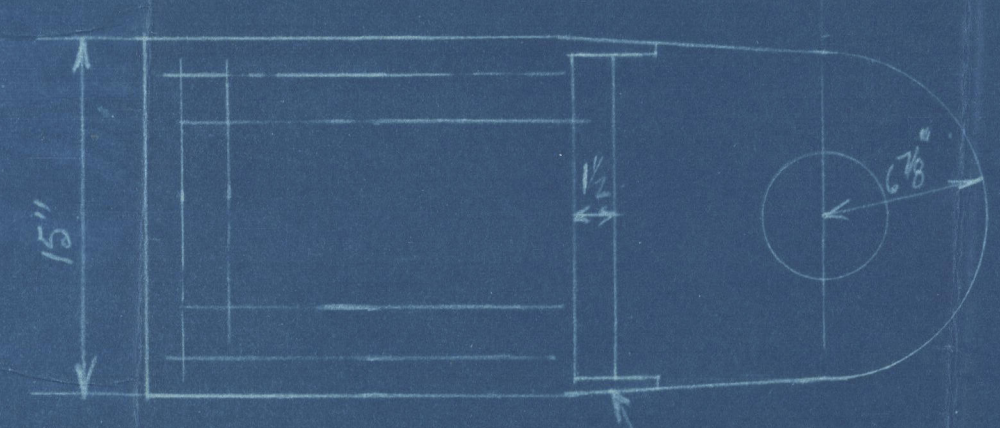
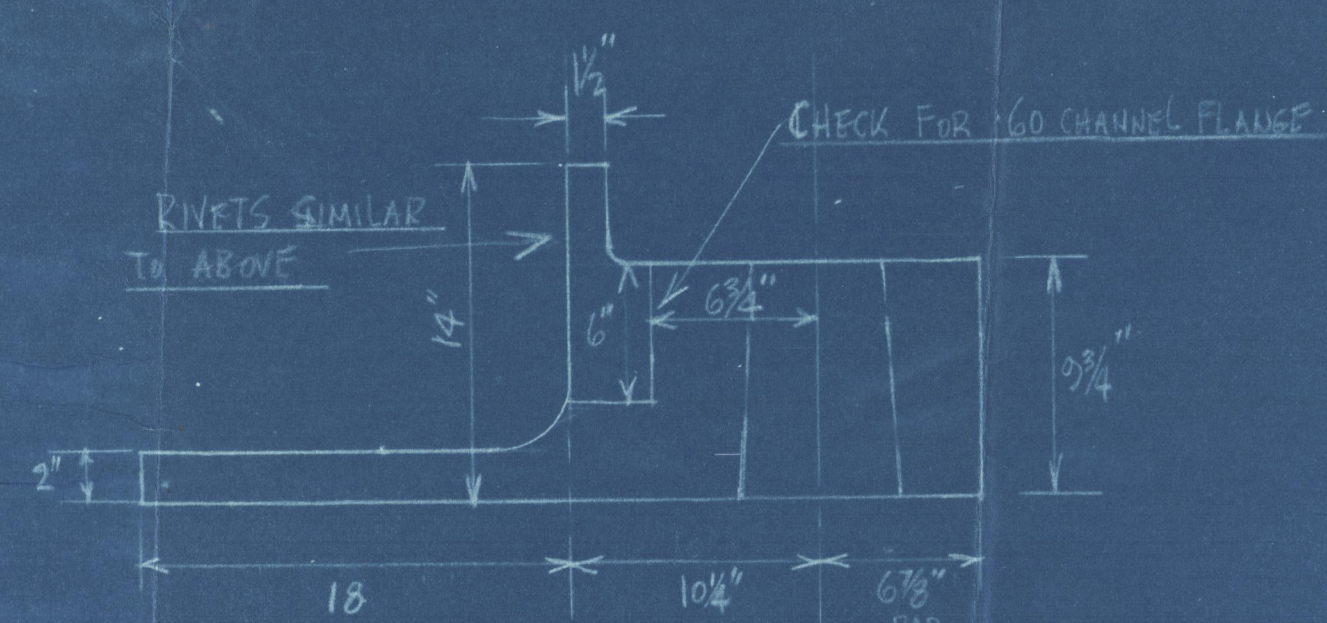
A x D = 158 x 5.05 = ~~792~~ ⁸⁰⁴ SPEED 11 1/2 KNOTS.

RUDDER STOCK 13 3/4" INCLUDES 10" FOR OIL TANKERS.



DETAIL OF INTERMEDIATE GUDGEONS

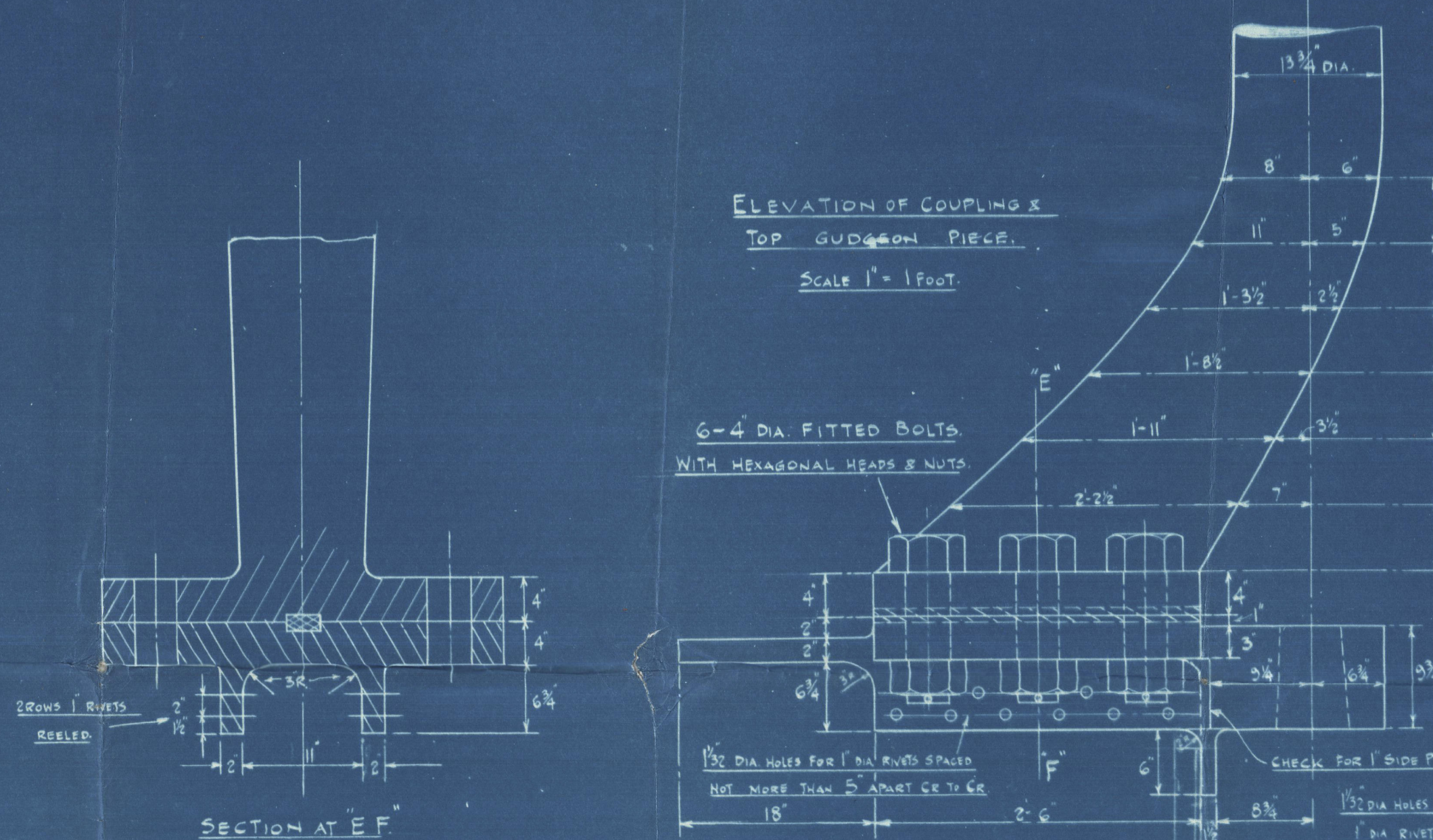
SCALE $\frac{1}{2}$ " = 1 FOOT



1" DIA RIVETS SPACED
5" APART

DETAIL OF BOTTOM GUDGEON

SCALE $\frac{1}{2}$ " = 1 FOOT



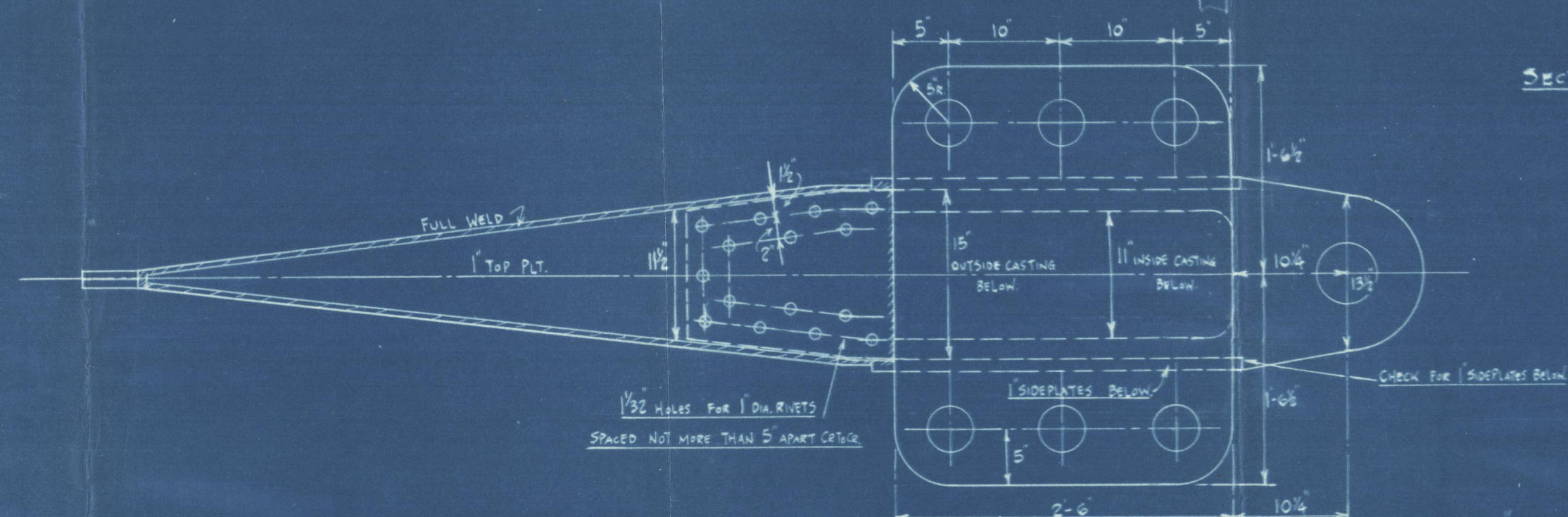
ELEVATION OF COUPLING & TOP GUDGEON PIECE

SCALE $\frac{1}{2}$ " = 1 FOOT

6-4" DIA. FITTED BOLTS
WITH HEXAGONAL HEADS & NUTS

1/2" DIA HOLES FOR 1" DIA RIVETS
NOT MORE THAN 5" APART C.T. TO C.T.

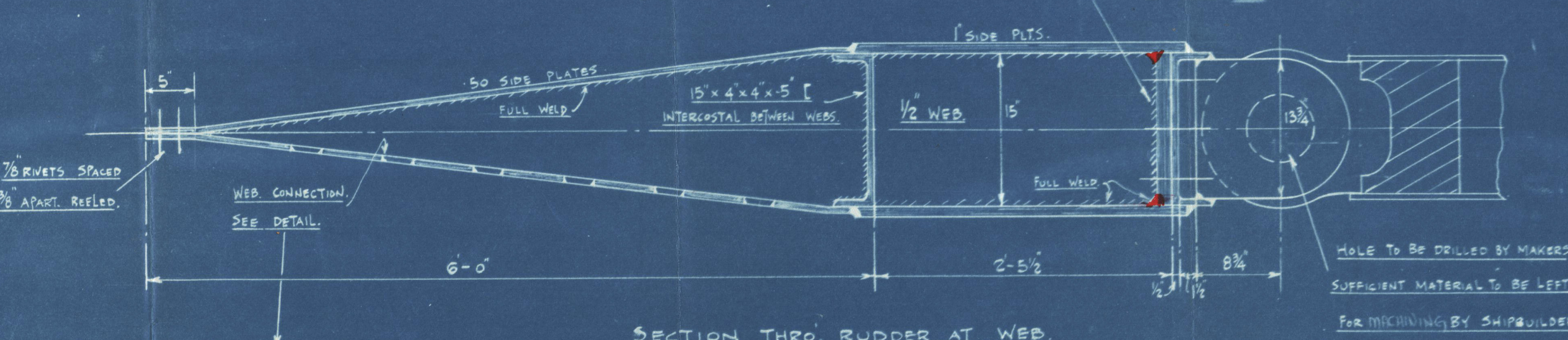
1/2" DIA HOLES FOR 1" DIA RIVETS



PLAN VIEW OF TOP OF RUDDER

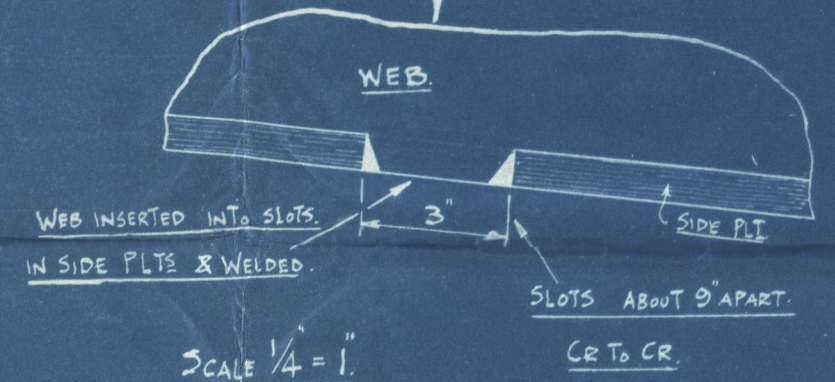
SCALE $\frac{1}{2}$ " = 1 FOOT

ALTERNATIVE FORGED SECTION
1/2" PLATE & 15" x 4" x 5" CHANNEL
BOLTED TOGETHER.



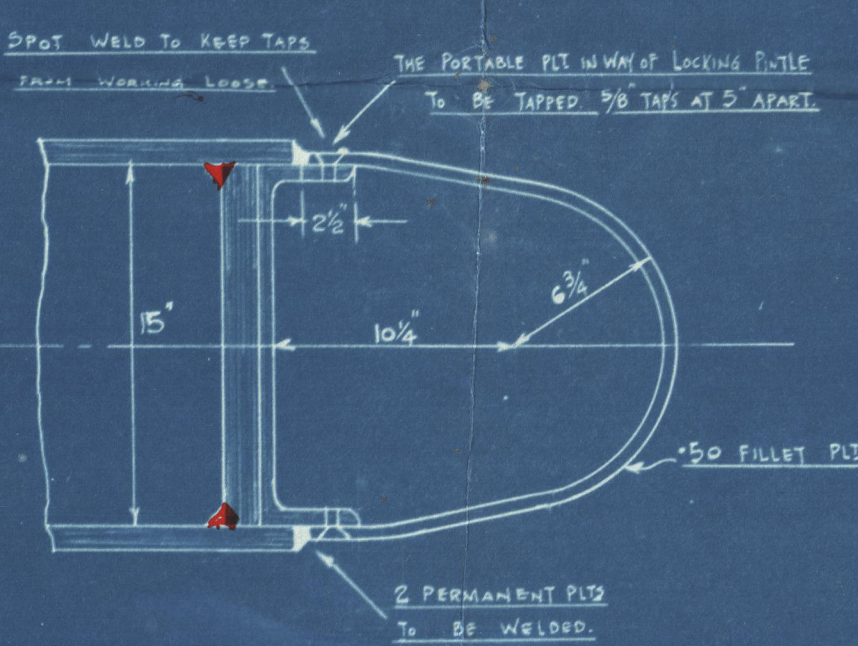
SECTION THRU RUDDER AT WEB

SCALE $\frac{1}{2}$ " = 1 FOOT



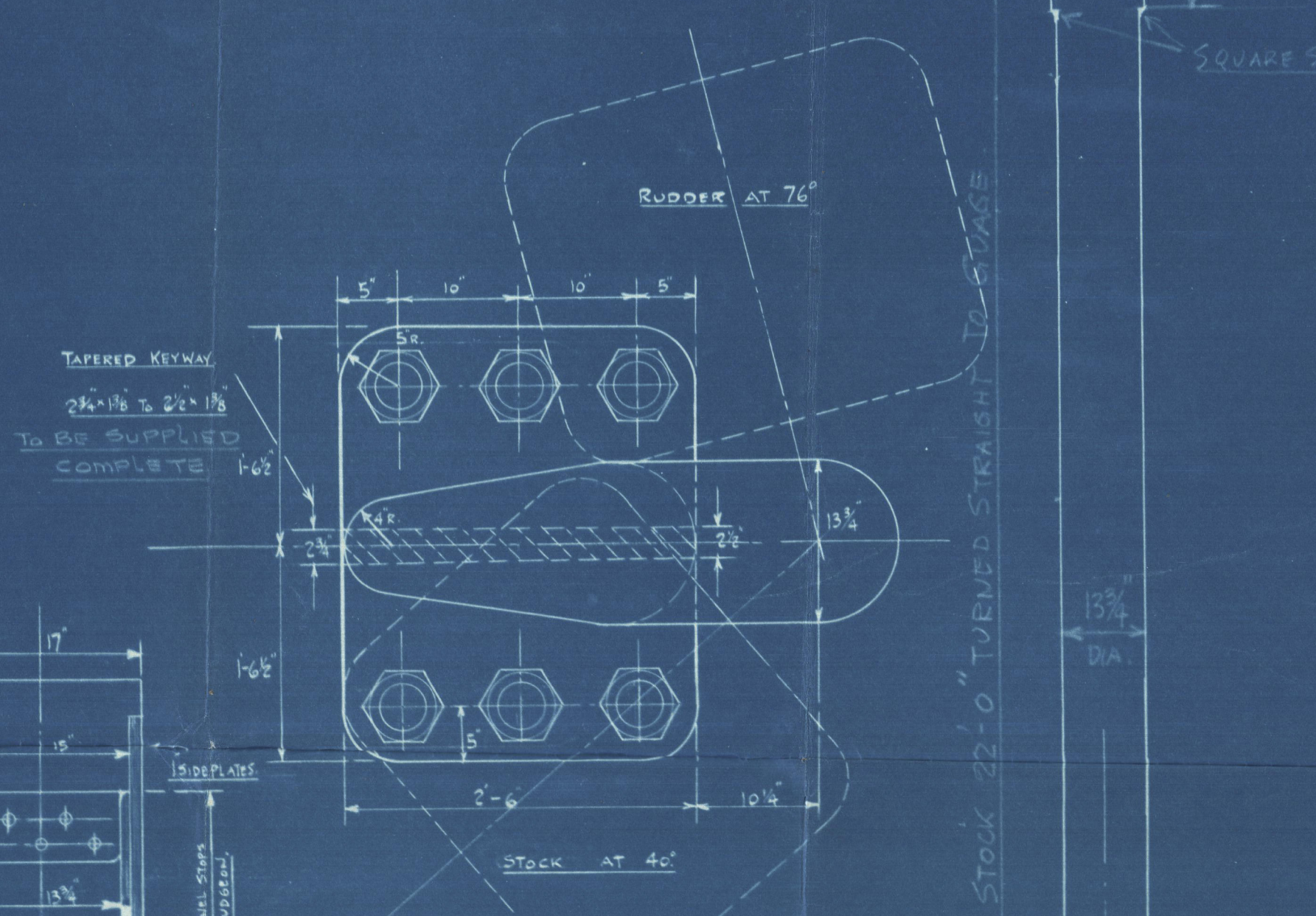
SCALE $\frac{1}{4}$ " = 1

DETAIL OF CONNECTION BETWEEN
TOP PLATE & SIDEPLATES. SIMILAR AT
BOTTOM PLT.



DETAIL OF FILLET PLT.

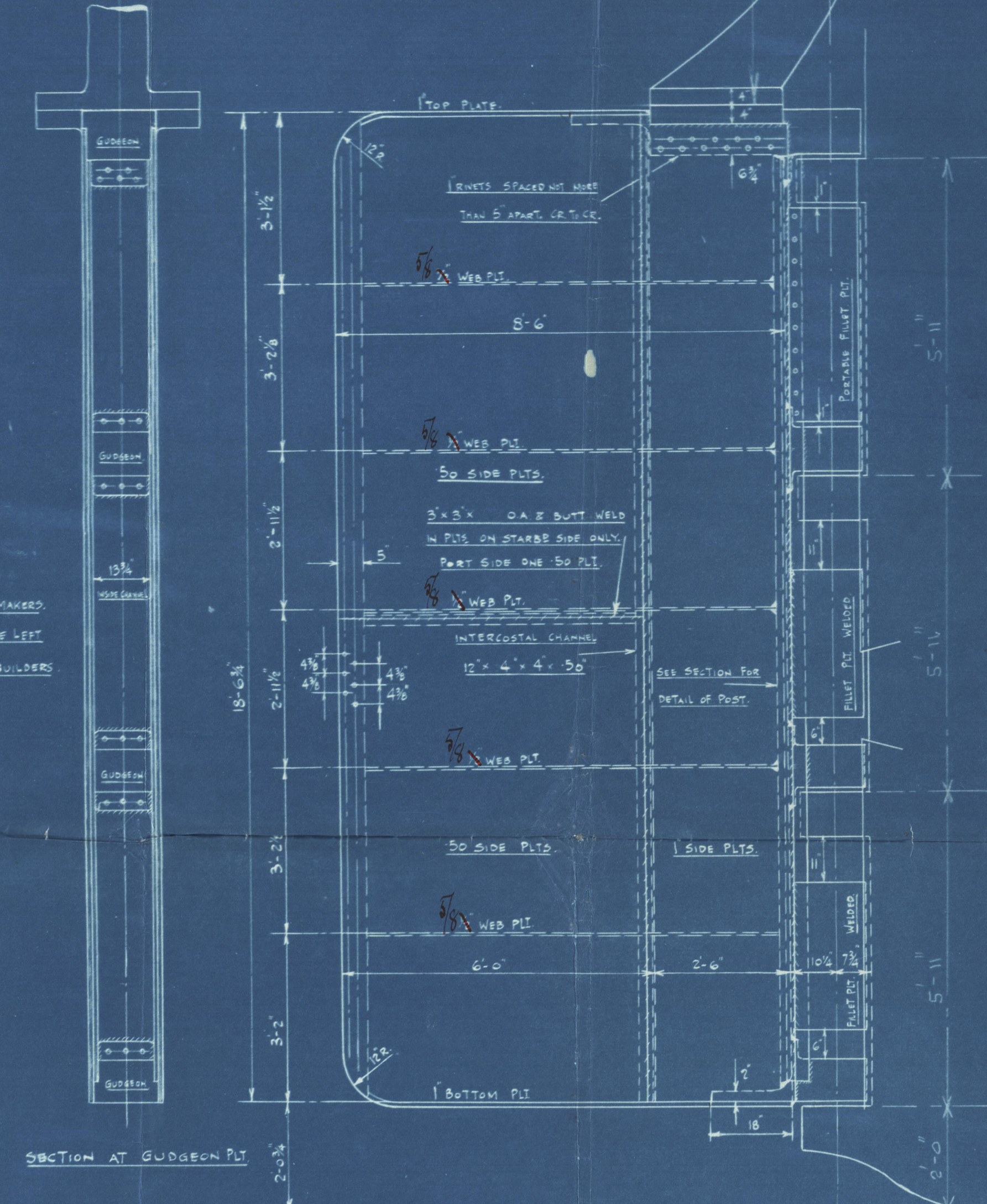
SCALE $\frac{1}{2}$ " = 1 FOOT



RUDDER AT 76°

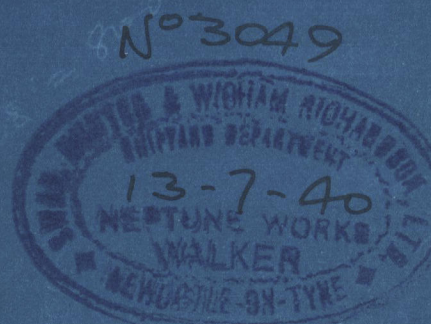
PLAN ON TO TOP OF COUPLING

SCALE $\frac{1}{2}$ " = 1 FOOT



SECTION AT GUDGEON PLT

18. 4. 207



S. H & W. R.

(5)

169688.

Rudder Plan

British Harmony.
NEWCASTLE ON TYNE.

Report No. 99856.



BRITISH CHARACTER.
NEWCASTLE ON TYNE.



Report No. 100073.



© 2020

002554-002567-0131

Lloyd's Register
Foundation