

**Lloyd's Register of Shipping.**  
**SURVEYS FOR FREEBOARD.**  
(CONDITIONS OF ASSIGNMENT.)

MOB. 18237.

Ship's Name **M.V. BRITISH EMPRESS.** (FURNESS S.B.CO-YARD No 391)

Port of Survey MIDDLESBROUGH.

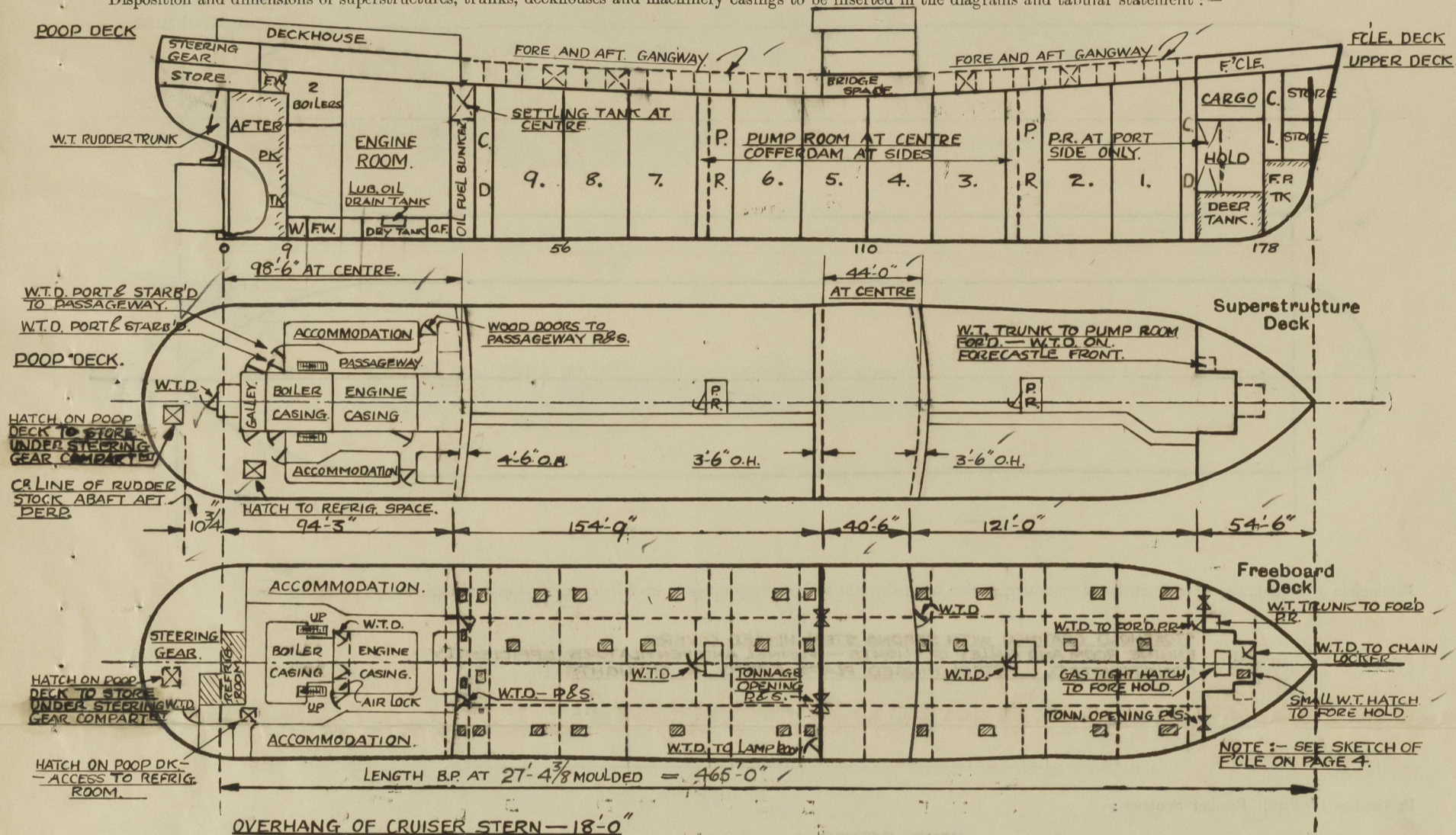
Official Number 181583

Surveyor's Signature *E. Lynn*

Nationality and Port of Registry **BRITISH - LONDON.**

Date of Survey **WHILE BUILDING.**

Disposition and dimensions of superstructures, trunks, deckhouses and machinery casings to be inserted in the diagrams and tabular statement :—



### Particulars of Superstructures, Trunks, Casings, Deckhouses.

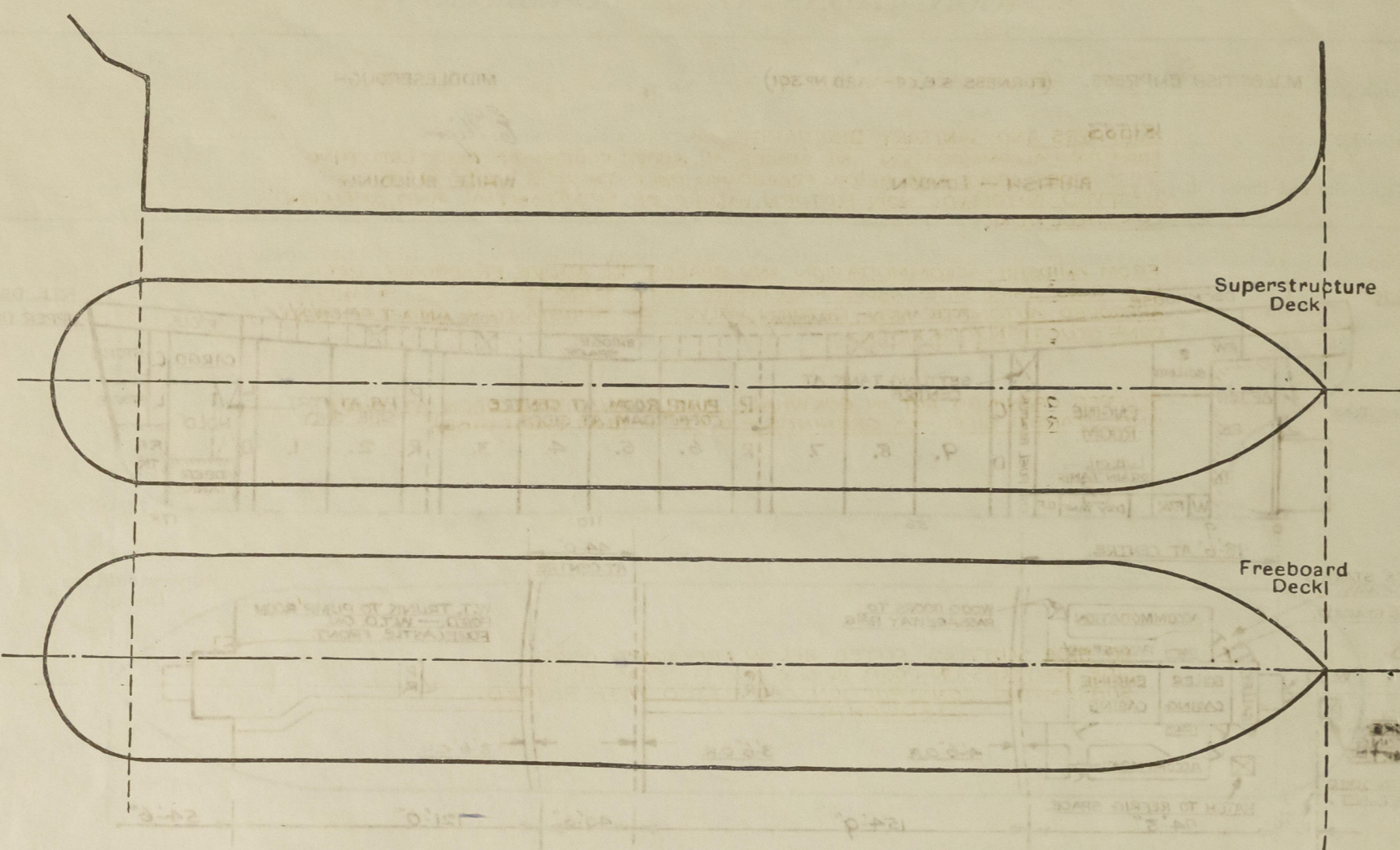
[illegible]

Particulars of Closing Appliances (state if capable of being manipulated from both sides).

Poop Bulkhead ... ..	STEEL HINGED W.T. DOORS (IP-IS,) MANIPULATED FROM BOTH SIDES. ✓
Raised Quarter Deck Bulkhead ...	
Bridge, After Bulkhead ... ..	STEEL HINGED W.T. DOOR (STARBD SIDE TO LAMP LOCKER) MANIPULATED FROM BOTH SIDES. PORTABLE STEEL PLATES SECURED WITH HOOK BOLTS (IP-IS). BOLTS -15" APART. ALSO 3" WOOD BOARDS IN CHANNELS
Bridge, Forward Bulkhead ... ..	STEEL HINGED W.T. DOOR (PORT SIDE) MANIPULATED FROM BOTH SIDES.
Forecastle Bulkhead ... ..	STEEL HINGED W.T. DOORS TO PR (PORT SIDE) AND CHAIN LOCKER- MANIPULATED FROM BOTH SIDES.
Exposed Machinery Casings on Free-board or Raised Quarter Decks ...	PORTABLE STEEL PLATES SECURED WITH HOOK BOLTS (IP-IS). BOLTS -15" APART. ALSO 3" WOOD BOARDS IN CHANNELS
Exposed Machinery Casings on Super-structure Decks ... ..	
Machinery Casings within Superstructures not fitted with Class I Closing Appliances ... ..	
Deckhouses on Flush Deck Ships ...	<div style="display: flex; align-items: center;"> <div style="margin-right: 10px;"> PUMP ROOM ENTRANCE - FOR'D.  PUMP ROOM ENTRANCE - AFT. </div> <div style="font-size: 3em; line-height: 1;">}</div> <div>STEEL HINGED W.T. DOORS MANIPULATED FROM BOTH SIDES.</div> </div>

## Particulars of Gangway Cargo and Coaling Ports:—

British Empress



STAKEHOLD GRATING WITH STRONG STEEL HINGED COVERS.  
ENGINE ROOM AND GALLEY SKYLIGHTS - FUNNEL AND VENTILATORS EFFICIENTLY  
CONSTRUCTED. STEEL HINGED FLAPS FITTED TO SKYLIGHTS.

NONE FITTED

FOR D AND AFT PUMP ROOM ENTRANCES - E.W. - 9'-0" x 11'-0" x 7'-5" HIGH. :- SIDE AND TOP PLATING 30, STEPS AT SIDES AND ENDS 40" WELDED PLATE SPACED 27" - AT FORD ENDS 4'-4" x 33 ANGLES WITH TOES WELDED TO CASING AND 30" APART AND ALL AT TOP AND E.W. AT BOTTOM. STEEL WT. DOORS AT AFTER ENDS MANIPULATED FROM BOTH SIDES OPENINGS 4'-3" x 27 COAMINGS 18" ENTRANCES AT AFT END POOP DECK HOUSE CASING :- STEEL WT. DOORS MANIPULATED FROM BOTH SIDES - OPENINGS 4'-7" x 30" COAMINGS 16" ENTRANCES AT PANDS SIDES POOP DECK HOUSE CASING :- ENTRANCES LEADING INTO PASSAGEWAYS AND STAIRWAYS - WOOD DOORS OF SOLID CONSTRUCTION - OPENINGS 5'-6" x 30" - COAMINGS 16"

FORECASTLE DECK LED TO TWEEN DECK —	2 OFF —	12 DIAM. X 36" X .34 COAMING —	COWL TOP	X
" " " "	1 OFF —	9 DIAM. X 36" X .32 COAMING —	COWL TOP	X
" " " FORE HOLD —	2 OFF —	12 DIAM. X 36" X .34 COAMING —	COWL TOP	X
" " " FORECASTLE —	2 OFF —	8 DIAM. X 36" X .30 COAMING —	COWL TOP	X
" " " FORD PUMP —	1 OFF —	12 DIAM. X 36" X .34 COAMING —	COWL TOP	X
" " " FORE PEAK STORE 1 OFF —		9 DIAM. X 36" X .32 COAMING —	COWL TOP	X
<hr/>				
POOP DECK LED TO REFRIG. MOTOR COMPARTMENT —	1 OFF —	11 DIAM. X 30" X .32 COAM —	COWL TOP	L <sup>O</sup>
" " " STEERING GEAR COMPARTMENT —	2 OFF —	6 DIAM. X 30" X PIPE COAM —	COWL TOP	L <sup>O</sup>
" " " STORE ROOMS	3 OFF —	6 DIAM. X 30" X PIPE COAM —	COWL TOP	L <sup>O</sup>
<hr/>				
CASING TOP LED TO POOP PASSAGEWAY	2 OFF —	22 DIAM. X 24" X .40 COAMING —	COWL TOP	L <sup>O</sup>
" " " DECKHOUSE	2 OFF —	24 DIAM. X 24" X .36 COAMING —	COWL TOP	L <sup>O</sup>
" " " PIPE PASSAGE	1 OFF —	12 DIAM. X 24" X .34 COAMING —	COWL TOP	L <sup>O</sup>

HINGED GAS TIGHT FLAPS MARKED ~~—~~ ~~✓~~  
WOOD PLUGS AND/OR CANVAS COVERS ~~—~~ ~~✓~~

PIPES ON FORECASTLE DECK -						IP IS.	TO FORE PEAK TANK -	6 DIAM.	AUTOMATIC VENT.-	36" HIGH	X	
"	"	"	"	"	"	IP IS.	TO DEEP TANK -	4 DIAM.	"	36"	X	
"	"	"	"	"	"	UPPER DECK FORWARD (AFT)	TO FORD COFFERDAM -	4 DIAM.	"	11-6"	X	
"	"	"	"	"	"	POOP DECK	IP IS.	TO AFT COFFERDAM -	4 DIAM.	"	11-6"	X
"	"	"	"	"	"	"	IP IS.	TO SETTING TANK -	4 DIAM.	"	36"	X
"	"	"	"	"	"	"	IP IS.	TO OF BUNKER -	4 DIAM.	"	36"	X
"	"	"	"	"	"	"	IP IS.	TO OF D-B TANK -	4 DIAM.	"	36"	X
"	"	"	"	"	"	"	IP IS.	TO D.B. DRY TANK -	4 DIAM.	GOOSENECK " 36"	X	
"	"	"	"	"	"	"	IP IS.	TO F.W. DB TANK -	4 DIAM.	AUTOMATIC " 36"	X	
"	"	"	"	"	"	"	IP IS.	TO AFTER PEAK TANK -	6 DIAM.	" 36"	X	
"	"	"	"	"	"	"	IP ONLY	TO RUDDER TRUNK -	3 1/2 DIAM.	GOOSENECK " 36"	X	
"	"	"	"	"	"	CASING TOP	IP IS.	TO F.W. TANKS -	3" DIAM.	" 36"	X	

APPROVED AUTOMATIC VENT. HEADS-MARKED — X ✓  
HINGED FLAPS OR WOOD PLUGS — MARKED — ⊗ ✓  
AIR PIPES TO OIL FUEL TANKS FITTED WITH MONEL METAL GAUZES.

NONE FITTED

FROM POOP ACCOMMODATION AND SPACES ALL ABOVE FREEBOARD DECK LED THRO' SHIP'S SIDES ABOVE AND BELOW FREEBOARD DECK THRO' 2" 2 1/2" 4" AND 5" APPROVED AUTOMATIC NON-RETURN VALVES OF SUBSTANTIAL AND EFFICIENT CONSTRUCTION (GUNMETAL)

FROM AMIDSHIP ACCOMMODATION AND SPACES ALL ABOVE FREEBOARD DECK  
LED THRO' SHIP'S SIDES ABOVE FREEBOARD DECK THRO' 2"-2 1/2"-3"-4" AND 5"  
APPROVED AUTOMATIC NON-RETURN VALVES OF SUBSTANTIAL AND EFFICIENT  
CONSTRUCTION. (GUN METAL)

SCUPPER OPENINGS CUT IN GUNWHALE ANGLE ON UPPER DECK AT PORT AND STARBOARD SIDES — OPENINGS — 6" x 2" — (8 AT EACH SIDE).

NO SIDE SCUTTLES FITTED BELOW FREEBOARD DECK.  
SIDE SCUTTLES ON POOP, BRIDGE AND FORECASTLE OF  
SUBSTANTIAL CONSTRUCTION AND FITTED WITH HINGED  
DEADLIGHTS. ✓

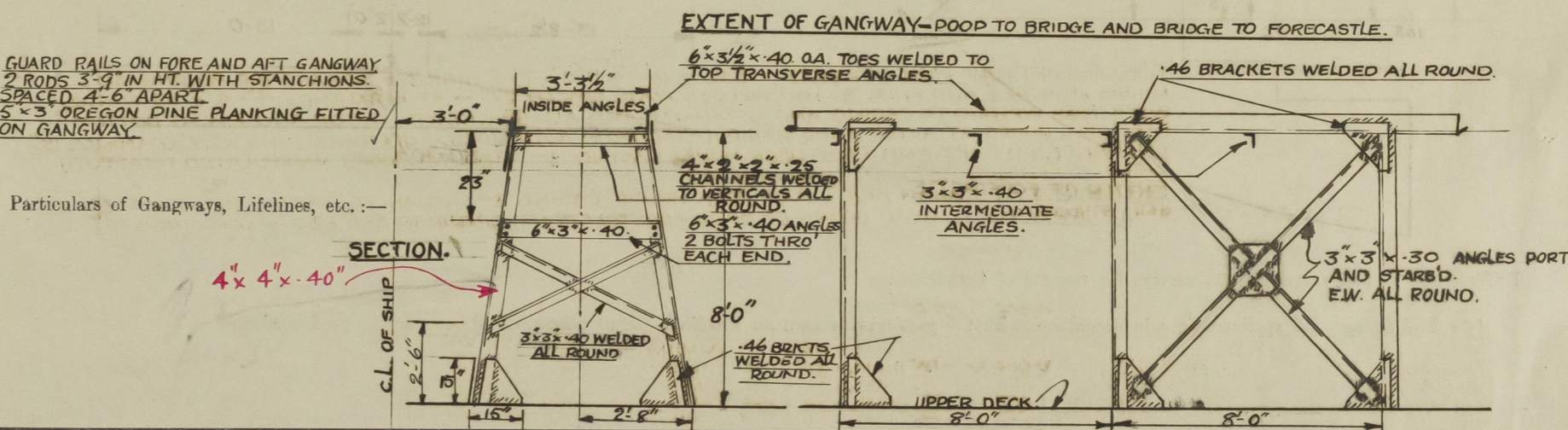
39'-6"

Particulars of Guard Rails :-

GUARD RAILS ON POOP AND F'CLE DECKS - 3 RODS	3'-9" ON POOP DK. & 3'-6" ON F'CLE DK.	} WITH STANCHIONS SPACED ABOUT 4'-6"
GUARD RAILS ON UPPER DECK (FIBER DECK) 3 RODS 3'-6" HIGH.		
GUARD RAILS ON BRIDGE DECK FORWARD AND AFTER ENDS		
PART STEEL BULWARKS AT ENDS OF ERECTIONS (SEE SKETCH) EFFICIENTLY CONSTRUCTED AND SUPPORTED.		
GUARD RAILS ON FORE & AFT GANGWAYS 2 RODS 3'-9" IN HEIGHT WITH STANCHIONS SPACED ABOUT 4'-6" APART.		

Particulars of Guard Rails :

SEC



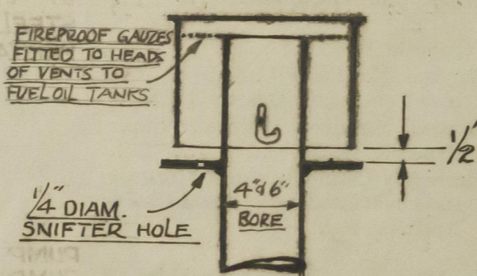
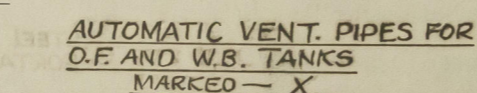
Particulars of Freeing Arrangements

Particulars of Freeing Arrangements.						
	Length of Bulwark	Height of Bulwark	Size of Freeing Ports	Number each side	Area each side	Rule area each side.
After Well	$\left\{ \begin{array}{l} \text{AFT OF BRIDGE} - 43' 9'' \\ \text{FOR'D OF POOP} - 32' 3'' \end{array} \right\}$	$3' 6''$	$\left\{ \begin{array}{l} \text{FOR'D} - 8' 4'' \times 9'' \\ \text{AFT} - 10' 0'' \times 9'' \end{array} \right\}$	2.	—	—
Forward Well	$\left\{ \begin{array}{l} \text{AFT OF F'CLE} - 30' 3'' \\ \text{FOR'D OF BRIDGE} - 23' 6'' \end{array} \right\}$	$3' 6''$	$\left\{ \begin{array}{l} \text{FOR'D} - 10' 0'' \times 9'' \\ \text{AFT} - 12' 5' 3'' \times 9'' \\ \text{AFT} - 12' 3' 0'' \times 9'' \end{array} \right\}$	3.	—	—

State position of each freeing port ... .. { After Well :— POOP FRONT HANDRAILS AND STANCHIONS BRIDGE. HANDRAILS AND STANCHIONS ECLE. FRONT (F. and A. position and height above deck edge)


State whether the freeing ports are fitted with shutters, bars, or rails, and give particulars of such:—  
NO SHUTTERS, BARS OR RAILS FITTED TO FREEING PORTS. ✓

Additional area where sheer is less than standard.



## OPENINGS IN BULWARKS

UPPER DECK



Lloyd's Register  
Foundation

002559-002567-0111 3

PARTICULARS OF PROTECTION TO OPENINGS, ETC.

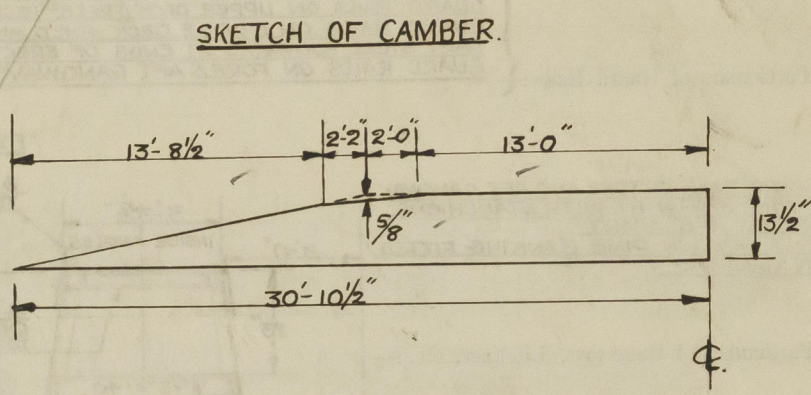
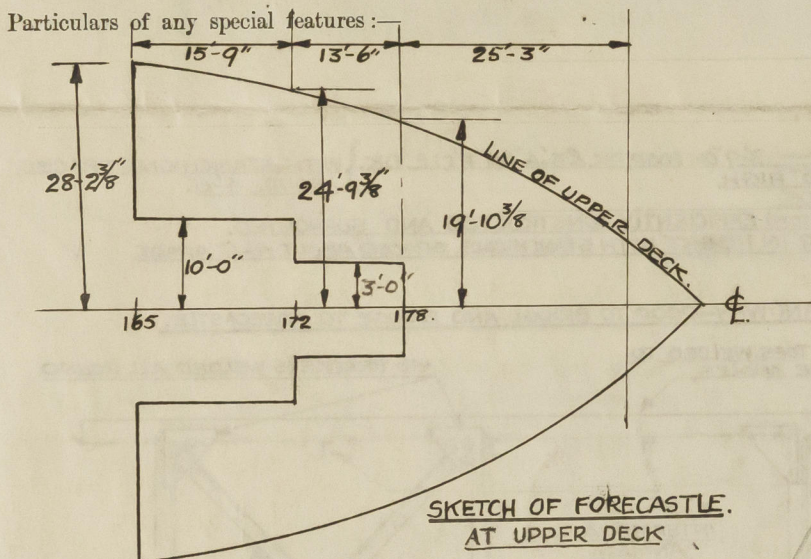
HATCHWAYS ON FREEBOARD AND SUPERSTRUCTURE DECKS.									
Description of Hatchway		...		...		...		...	
Dimensions of Hatchway		...		...		...		...	
COAMINGS	{ Height above Deck Thickness Stiffeners Brackets, Stays	{ Sides Ends	...	...	...	...	...	...	...
			...	...	...	...	...	...	...
HATCH BEAMS	{ Number Spacing Scantling and Sketch	{ Bearing Surface	...	...	...	...	...	...	...
			...	...	...	...	...	...	...
FORE AND AFTERS	{ Number Spacing Unsupported Lengths Scantling* and Sketch	{ Bearing Surface	...	...	...	...	...	...	...
			...	...	...	...	...	...	...
HATCH COVERS	{ Material Thickness How fitted Bearing Surface	...	...	...	...	...	...	...	...
		...	...	...	...	...	...	...	...
Spacing of Cleats			...	...	...	...	...	...	...
Number of Tarpaulins			...	...	...	...	...	...	...

\*Are wood fore and afters steel shod at all bearing surfaces ?

Are battens and wedges efficient and in good condition ?

Are tarpaulins in good condition and in accordance with rule requirements ?

Are lashings provided in accordance with rule requirements ?



Endorsement at first survey and at surveys for renewal of Certificate :—

The fittings and appliances are in accordance with the particulars shown on this form (or as now modified) and are in good condition.

*mit*

ML-D