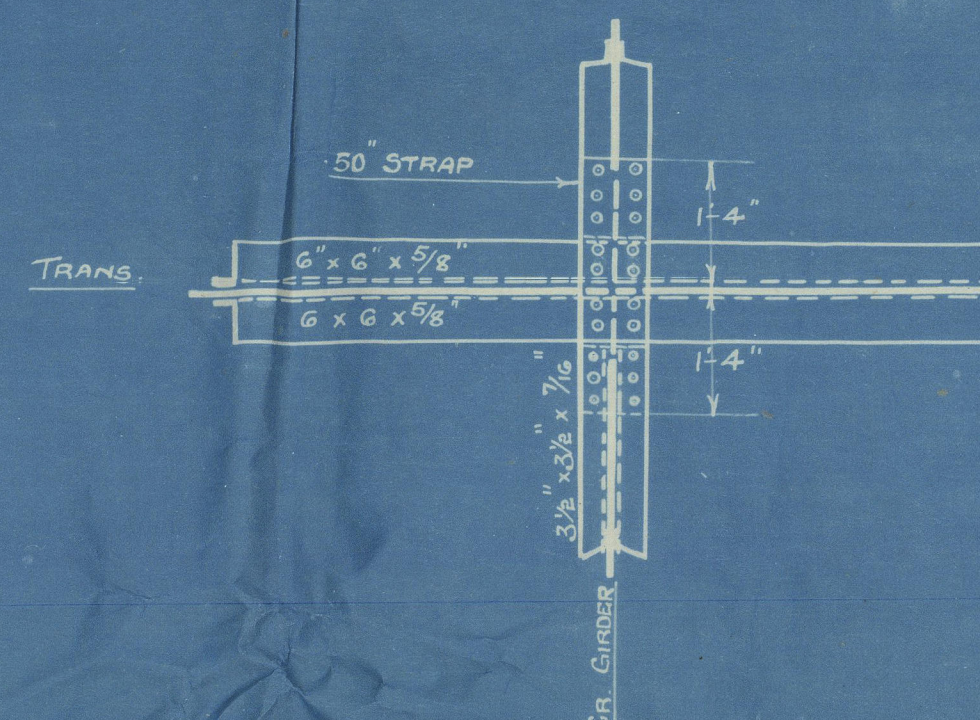
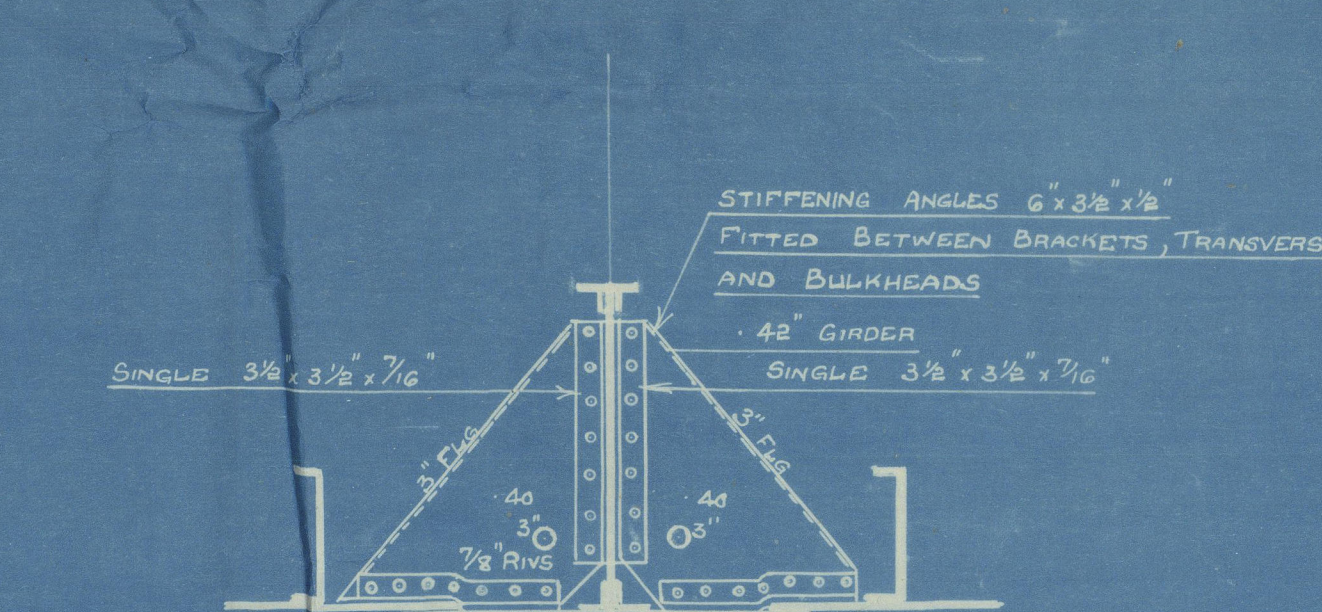


DETAIL OF STRUT CONNECTION TO SHELL  
& LONGITUDINAL BULKHEAD STRINGERS



TOP OF CR. GIRDER & TRANSVERSE CONNECTION



3/2 x 3/2 x 7/16

DETAIL OF BRACKETS BETWEEN  
TRANSVERSE & TRANSVERSE BHD

STIFFENERS & SIDE FRAMES SPACED  $3\frac{1}{2}$ " APART  
BOTTOM LONGITUDINALS SPACED 36" APART  
TRANSVERSES SPACED 10'-6" APART.

## RIVET SPACING



M.V. "BRITISH PATIENCE" \*  
(HARLAND & WOLFFS YARD N<sup>o</sup> 11669)

"  
MIDSHIP SECTION  
(AS FITTED)  
"

Glasgow Rep. No. 66278

Sister vessels

British Vigilance  
(1116) - Gls Rpt No 65550

British Merit  
(1117) Gls Rpt No. 65770.

---