

RUDDER PLAN.

SCALE:- 1" = 1 FOOT.

DIMENSIONS OF SHIP 460'-0" B.P. x 61'-0" MLD. x 33'-3" MLD. TO UPPER DECK.
TO GLASS 100 A.1. AT LLOYDS CARRYING PETROLIUM IN BULK.

SPEED:- 11 1/2 KNOTS.
TOTAL IMMERSED AREA OF RUDDER FROM FORE SIDE OF POST: 139 SQUARE FEET.
CENTRE OF GRAVITY OF AREA OF RUDDER FROM CENTRE LINE OF PINTLES: 4.60 FEET.
A.D. = 658.

RUDDER FRAME: BEST QUALITY STEEL CASTING. RUDDER STOCK: BEST QUALITY FORGED STEEL.

ALL TO LLOYDS TESTS AND REQUIREMENTS.

RUDDER MAKERS TO SUPPLY:-

FORGED STEEL COUPLING BOLTS, COMPLETE WITH NUTS AND SPLIT PINS.

FORGED STEEL STRIP FORMING AFTER EDGE OF RUDDER FRAME.

FORGED STEEL PINTLES, BRONZE BUSHES, COMPLETE WITH NUTS AND COTTER PINS AS DETAILED ON PLAN.

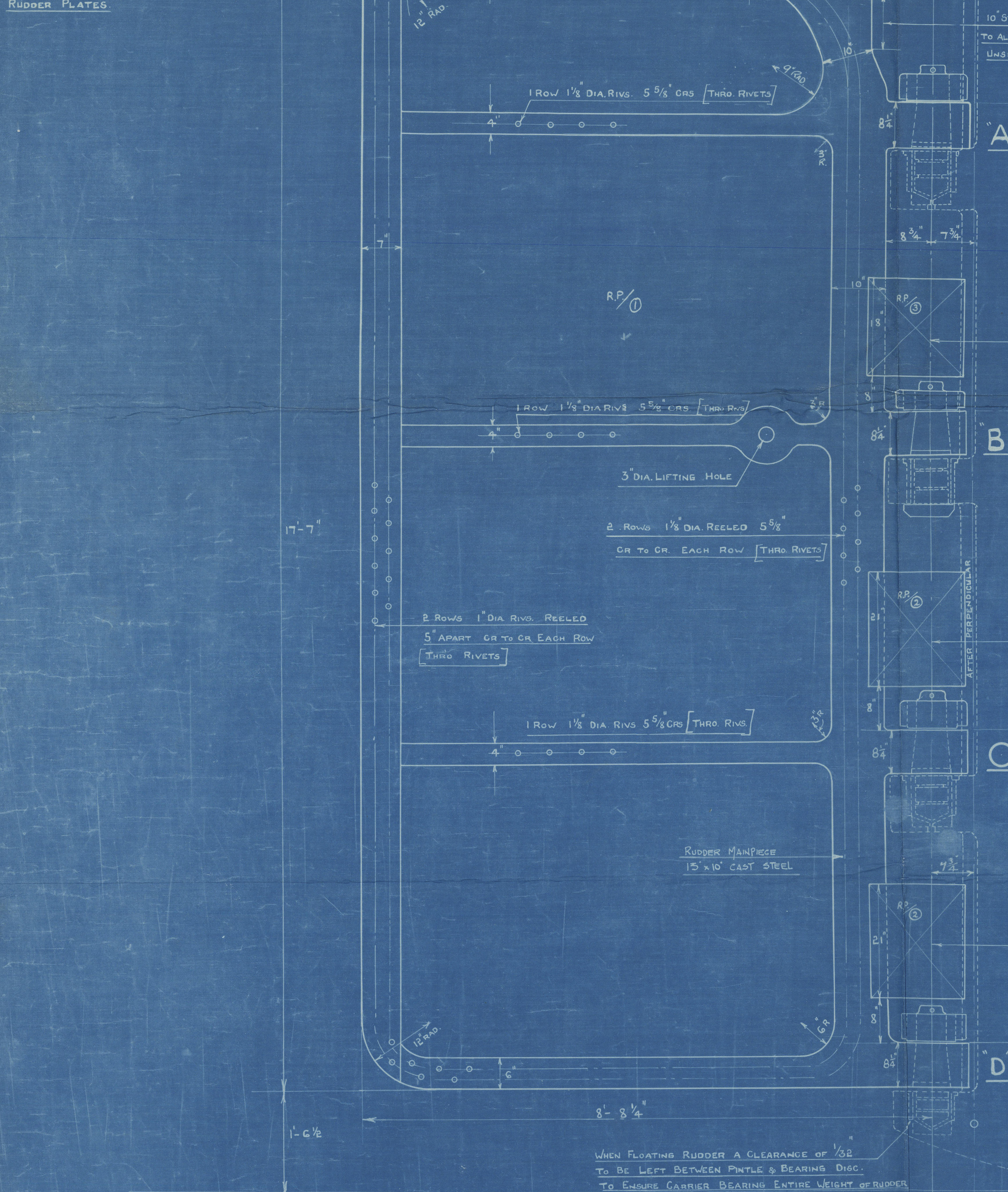
RIVET HOLES TO BE DRILLED 1/16" LARGER THAN DIA. OF RIVET SHOWN.

PARTS TINTED RED TO BE MACHINED.

CENTRE LINES OF STOCK & PINTLES TO BE IN ALIGNMENT.

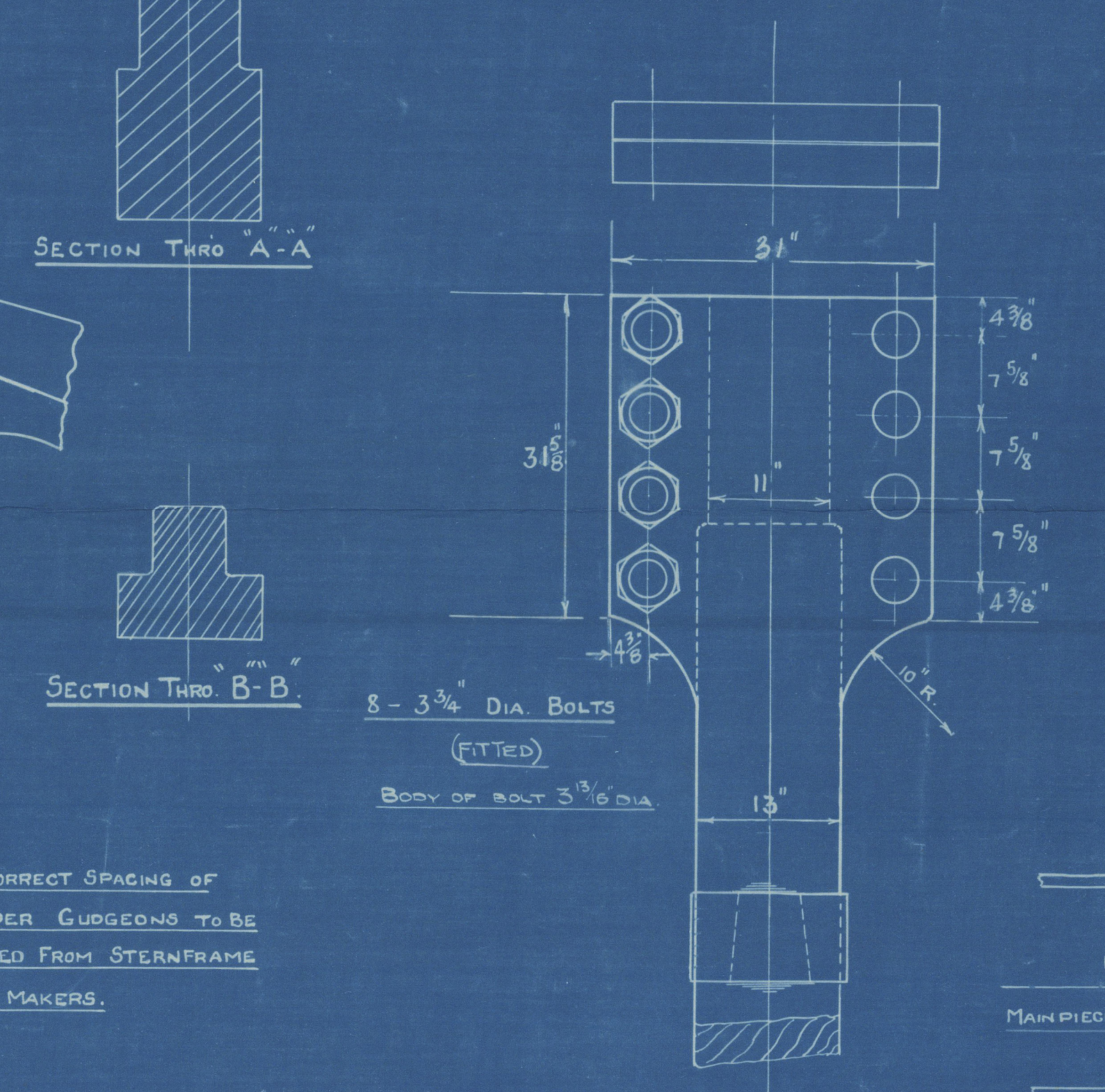
SHIPBUILDER WILL SUPPLY AND FIT

RUDDER PLATES.



WHEN FLOATING RUDDER A CLEARANCE OF 1/32" TO BE LEFT BETWEEN PINTLE & BEARING DISC. TO ENSURE CARRIER BEARING ENTIRE WEIGHT OF RUDDER.

DETAIL OF COUPLING LOOKING AFT.



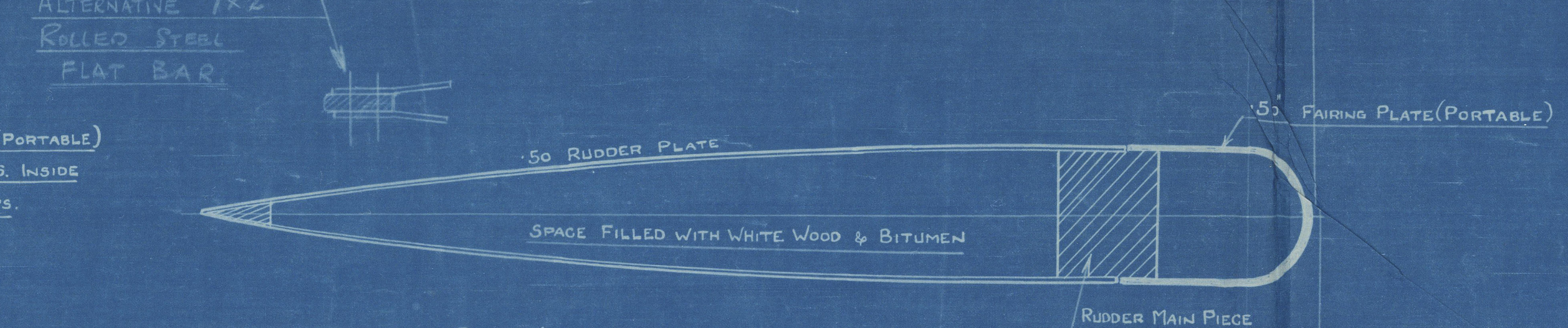
NOTE: CORRECT SPACING OF RUDDER GUDGEONS TO BE LIFTED FROM STERNFRAME BY MAKERS.

1 1/2" SLOT WELD: 4" APART WIDE ENOUGH TO PERMIT OF THEIR BEING WELDED ROUND THE EDGES THE SLOTS AFTERWARDS TO BE FILLED WITH STIMULINOUS OR OTHER SUITABLE MATERIAL.

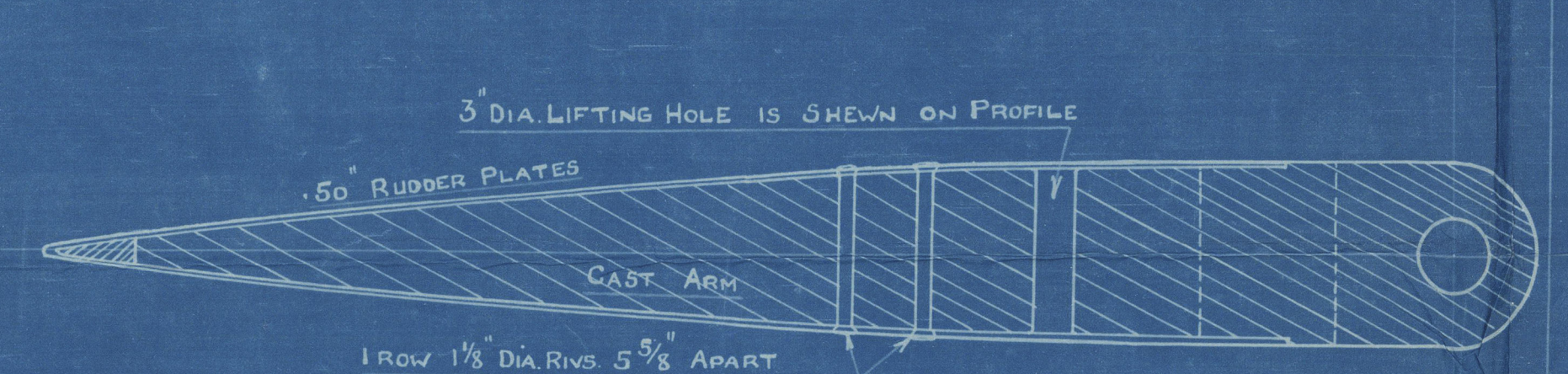
FORWARD SIDE OF MAINPIECE CLEAR OF FAIRING PLATES ROUNDED OFF AS SHOWN.
SECTION THRU RUDDER MAINPIECE IN WAY OF FAIRING PLATES.

SCALE:- 1 1/2" = 1 FOOT.

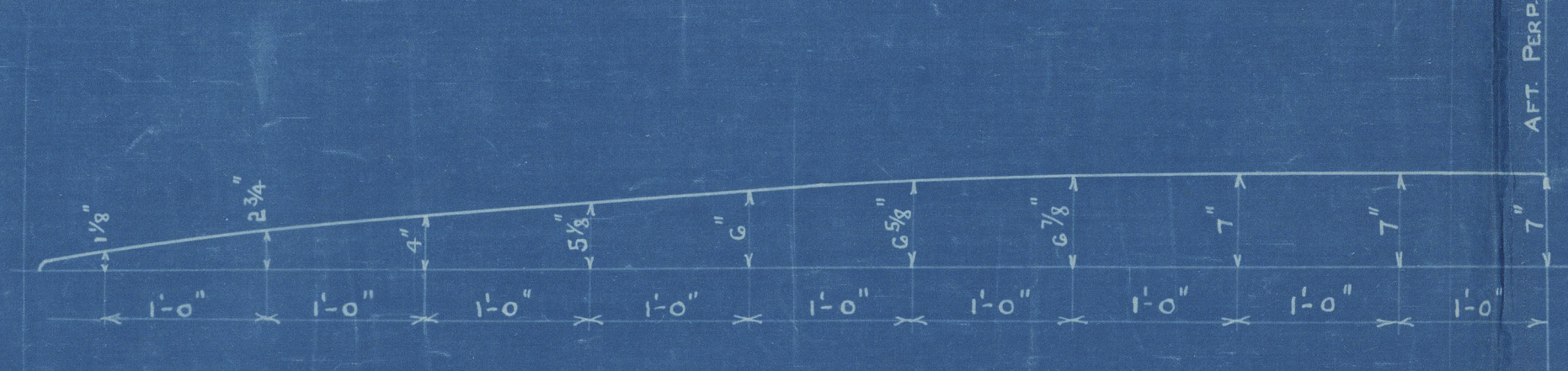
PLAN VIEW OF TOP ARM AND COUPLING



PLAN VIEW OF RUDDER CLEAR OF ARMS

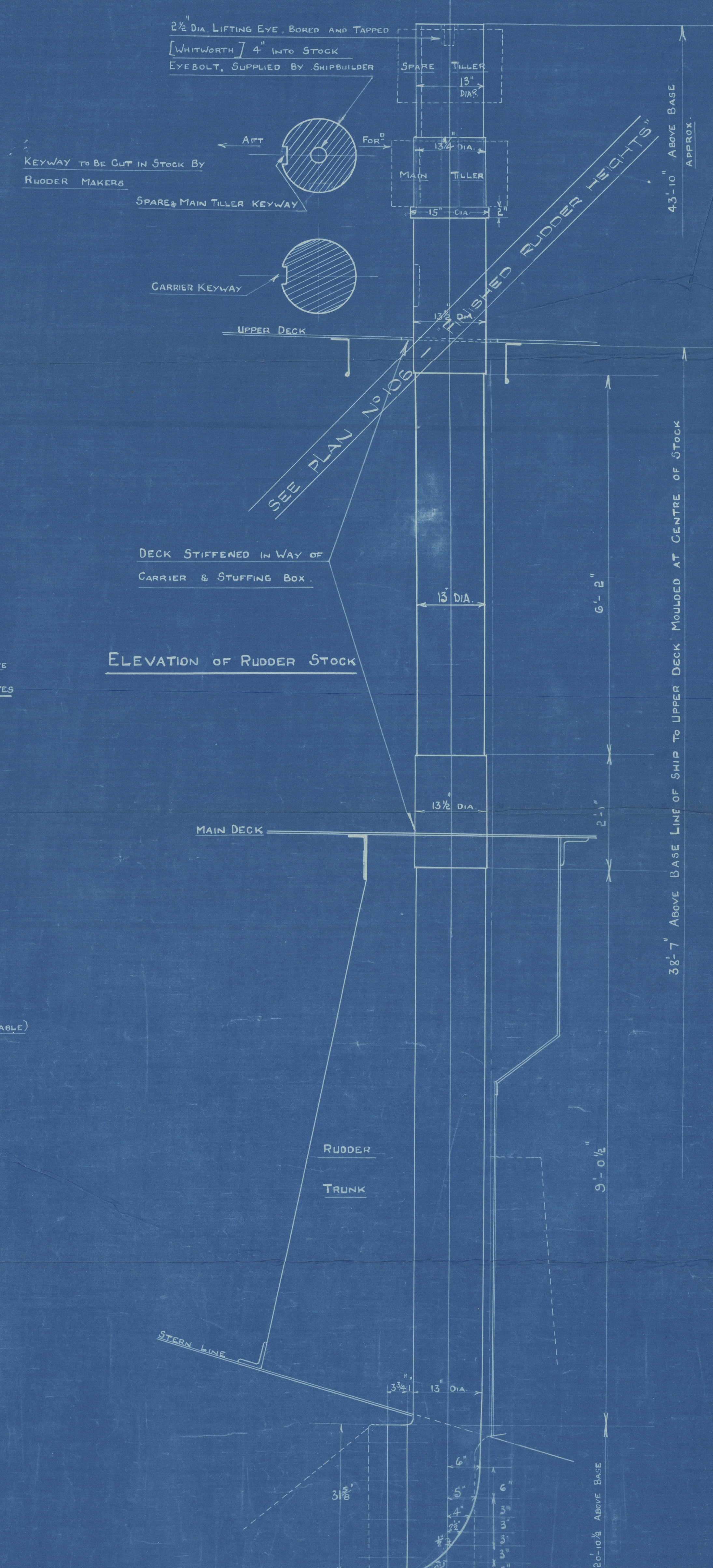


PLAN VIEW OF INTERMEDIATE ARM.



OFFSETS FOR OUTLINE OF RUDDER HALF BREADTHS GIVEN TO OUTSIDE OF RUDDER SIDE PLATING

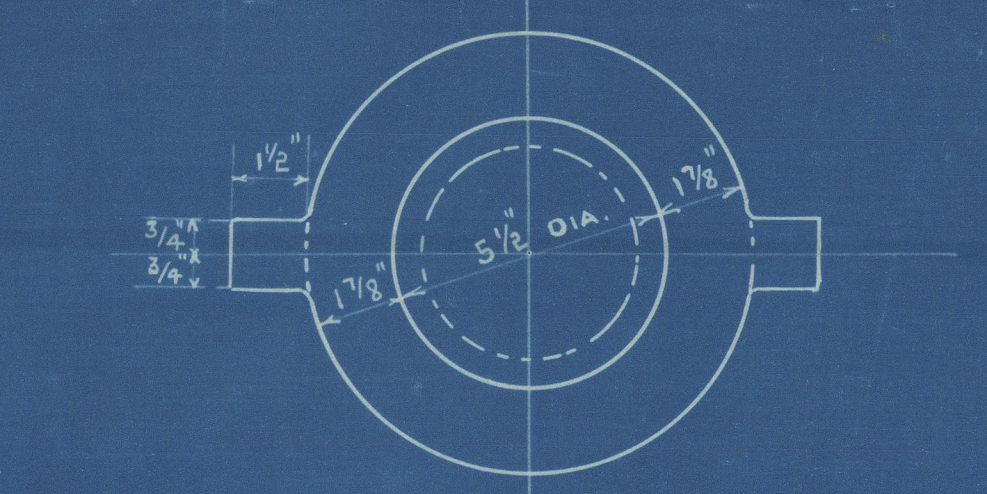
ELEVATION OF RUDDER STOCK



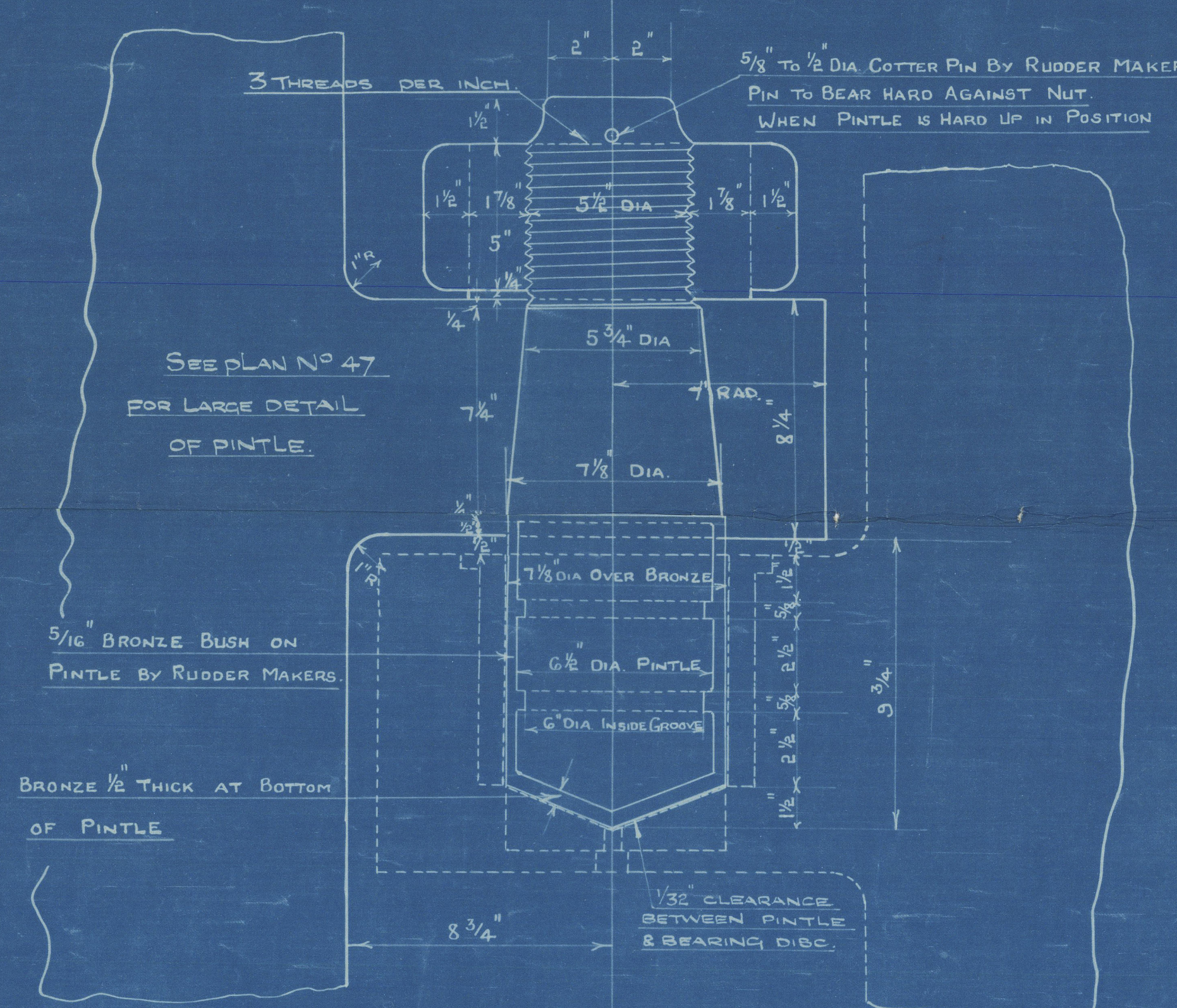
NOTE:- DETAILS NOT INDICATED SIMILAR TO SKETCH BELOW

DETAIL OF GUDGEON B AND LOCKING PINTLE

SCALE:- 1/4" FULL SIZE.

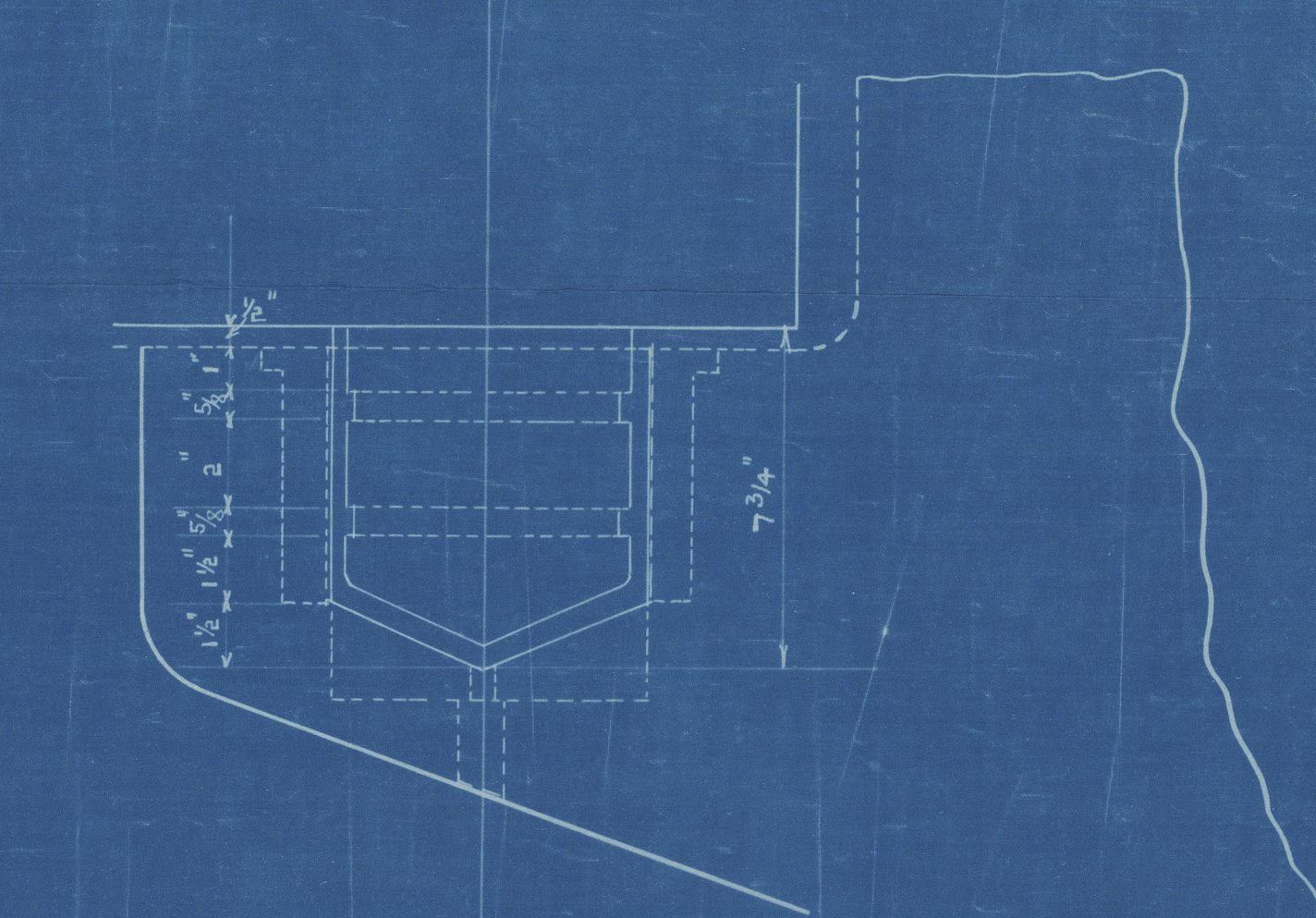


DETAIL OF PINTLE NUTS - SCALE:- 1/4" FULL SIZE.



DETAIL OF GUDGEONS A, C AND PINTLES

SCALE:- 1/4" FULL SIZE.



DETAIL OF BOTTOM GUDGEON D AND PINTLE

SCALE:- 1/4" FULL SIZE.

DETAILS NOT INDICATED SIMILAR TO SKETCH ABOVE.

NOTE:- ALL PINTLES TO BE SUPPLIED COMPLETE BY RUDDER MAKERS.

PINTLES TO BE OF STEEL MADE AND EFFICIENTLY FINISHED AS PER DETAILS.

APPROVED
LLOYD'S REGISTER OF SHIPPING
James R. Park
DATE 15/1/1911

5

MESSRS. HARLAND & WOLFF LTD.

N^{os}. 1166 & 1167G.

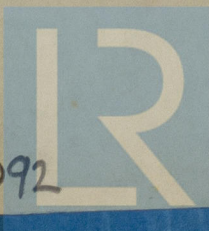
R UDDER P L A N

1166 Shd. British Patience
GLASGOW REPORT No. 67150

1166 British Patience
GLASGOW REPORT No. 67278

Shd. 1167G. Empire Mackay
GLASGOW REPORT No. 67550

1167 Empire Mackay
GLASGOW REPORT No. 67629



© 2020

Lloyd's Register

002550-002558-0092