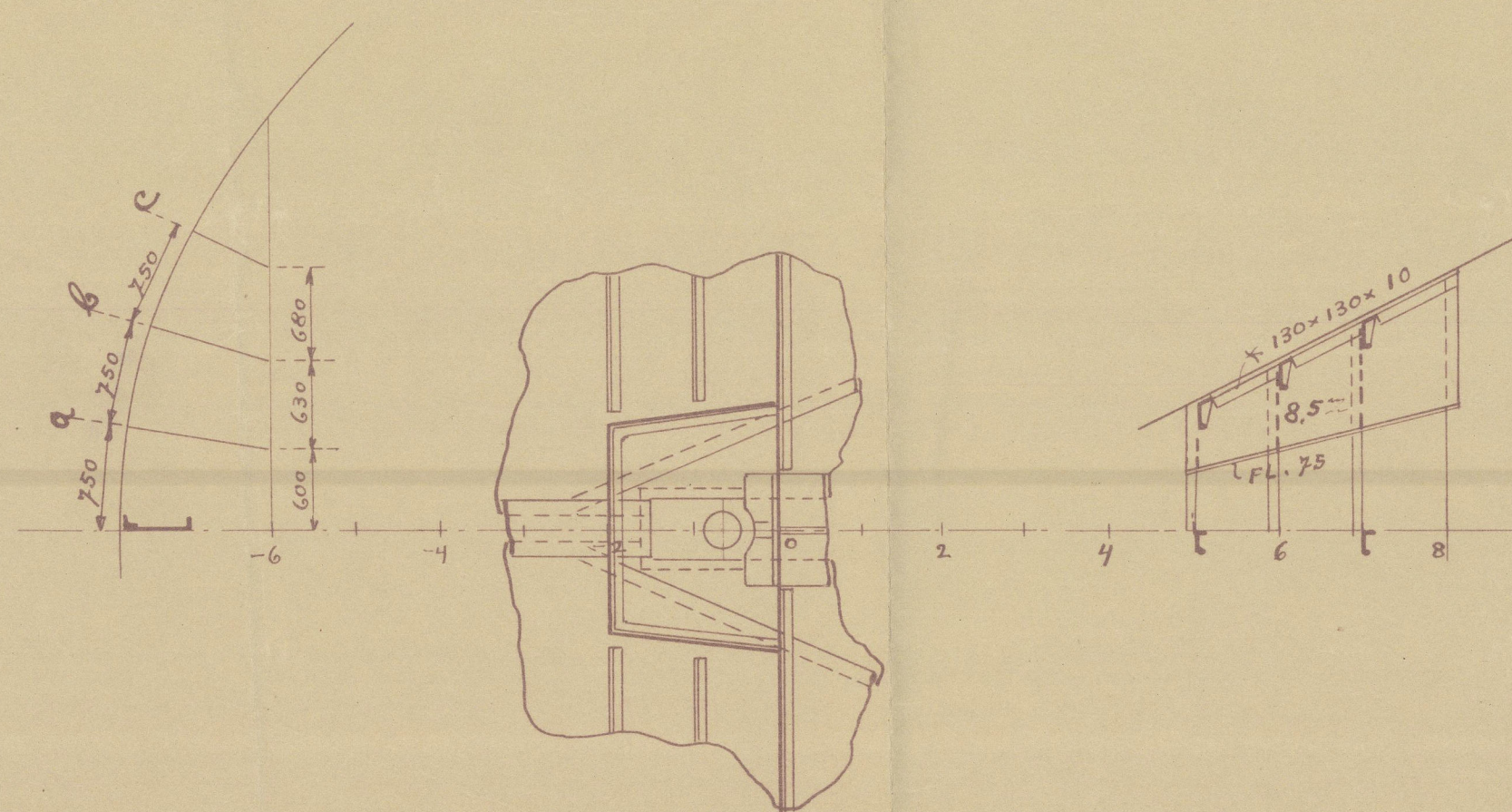
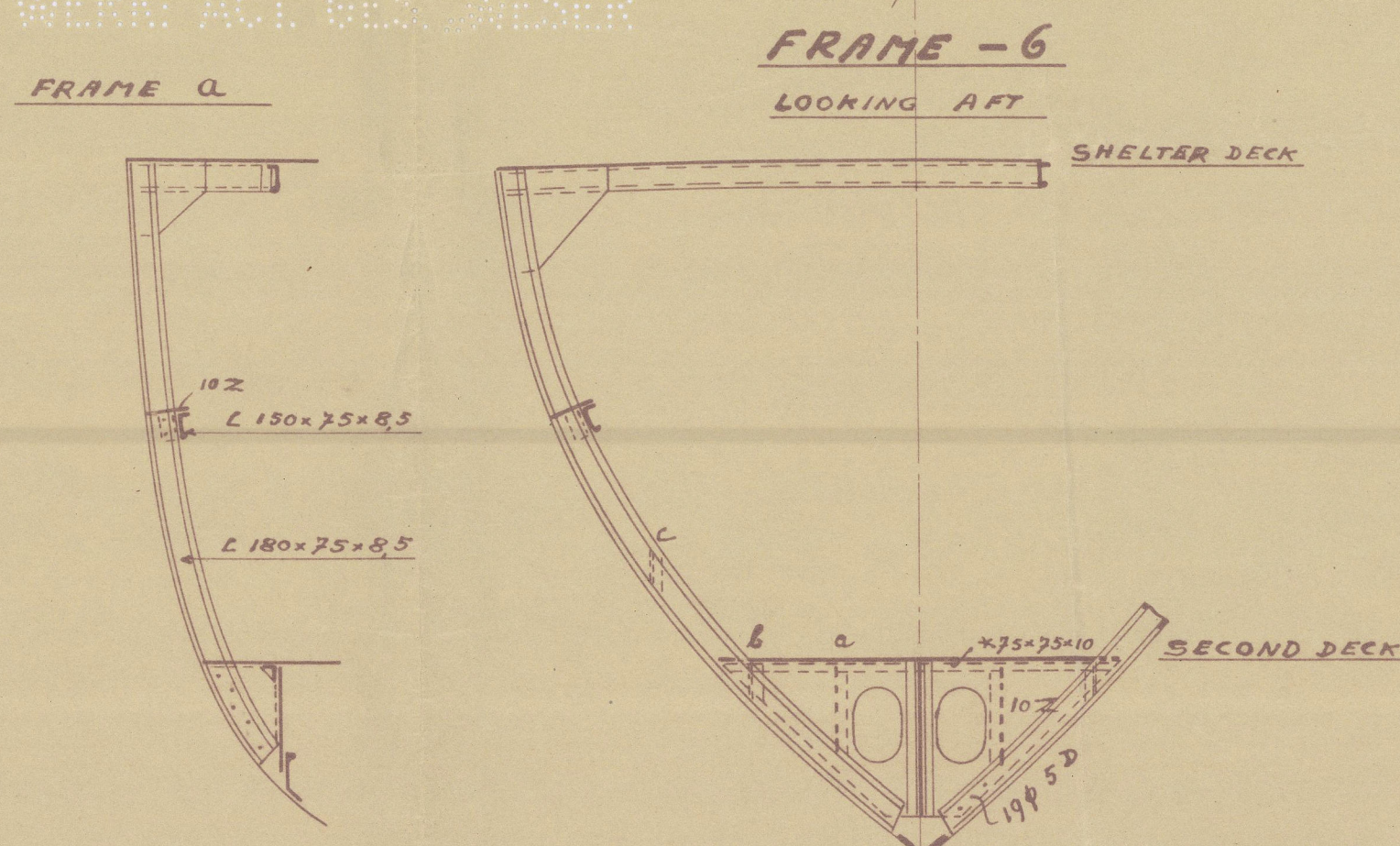
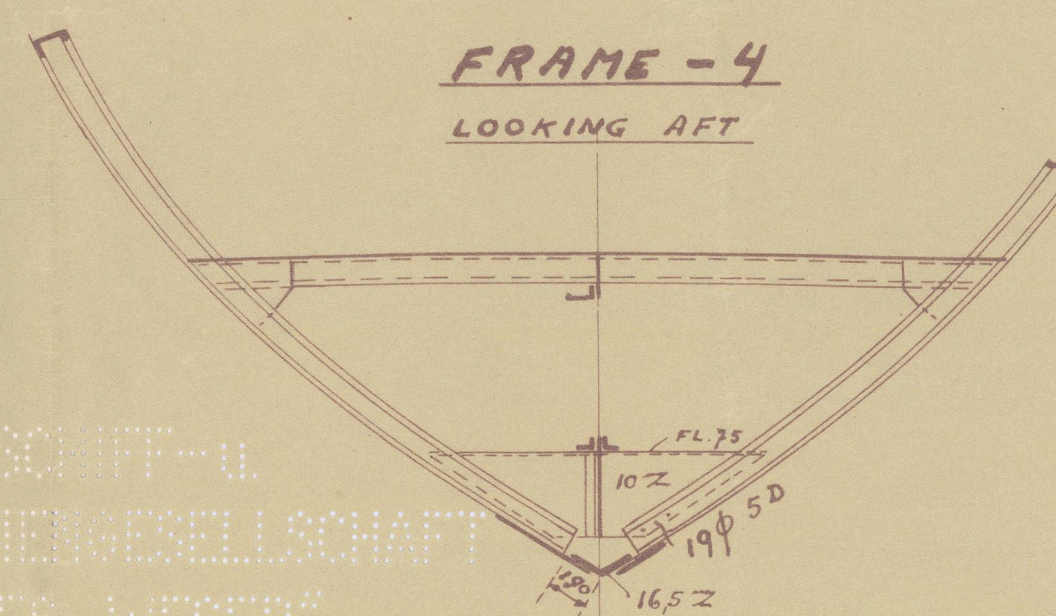
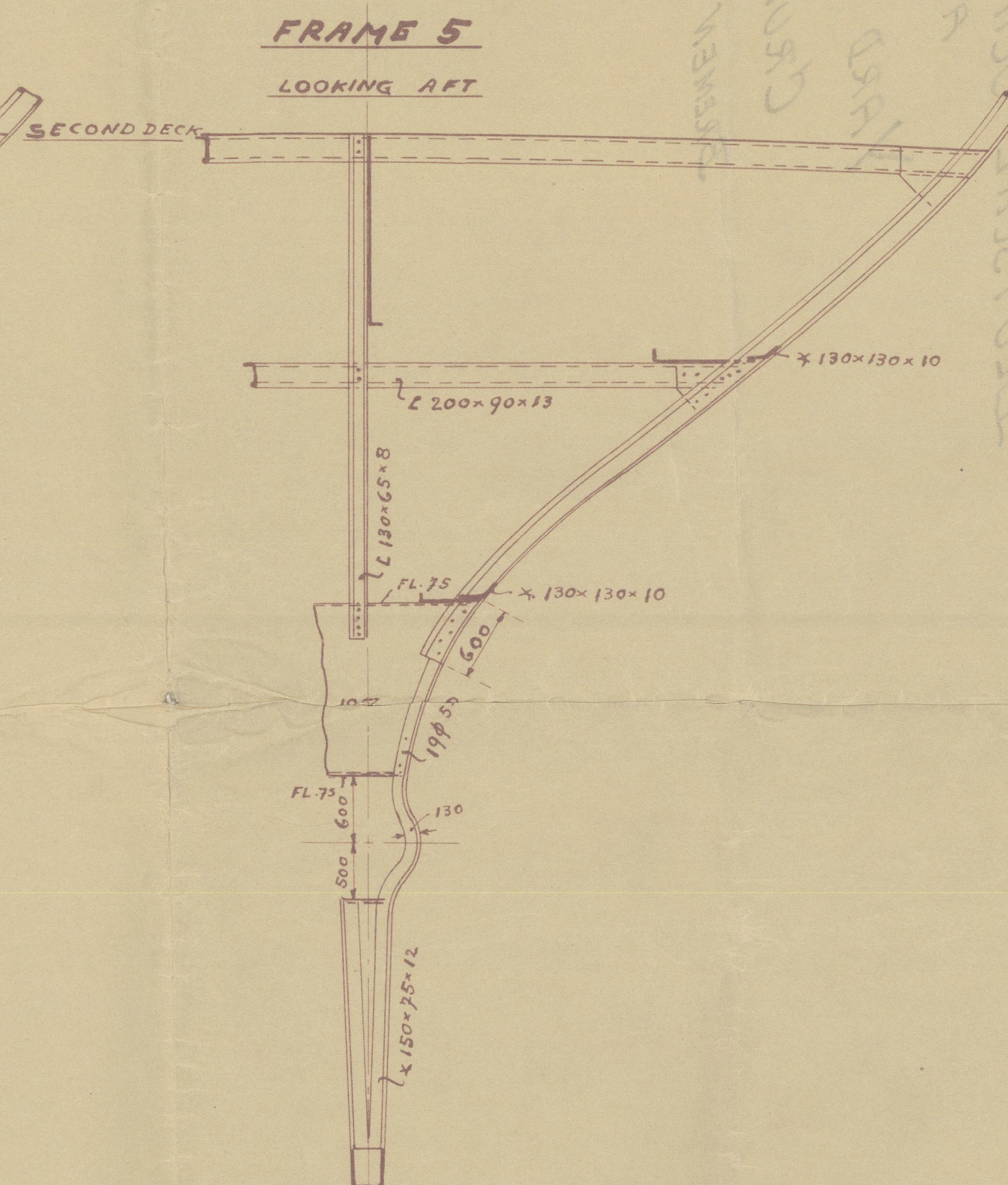
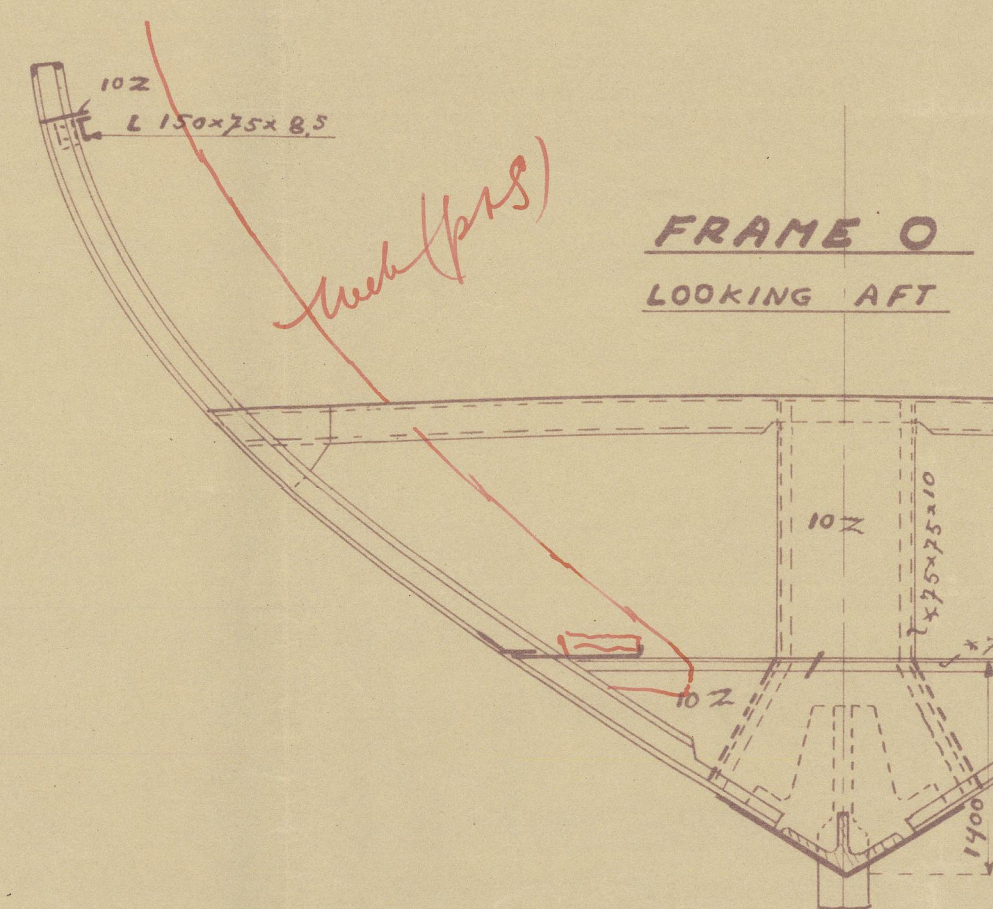


21.5.35.

1:50



DESCHIMAG A.G. WESER BREMEN 14. MAI 1935 *Li*

21. 5. 20

Deutsche Schiff- und
Maschinenbau AG
Werke Akt. Ges. Bremen
BREMEN
15. MAI 1955
Konstruktion
für Handelsschiffe

002543-002549-0169

DEUTSCHE SCHIFF & MASCHINENBAU A G
AG "WESER"

YARD No 896/97/98

CRUISER STERN

BREMEN LETTER of 16.5.35.

896 "Ethiopian"
894. "Nigerian"
898. "Leonian"



© 2020

Lloyd's Register
Foundation

002543-002549-0169