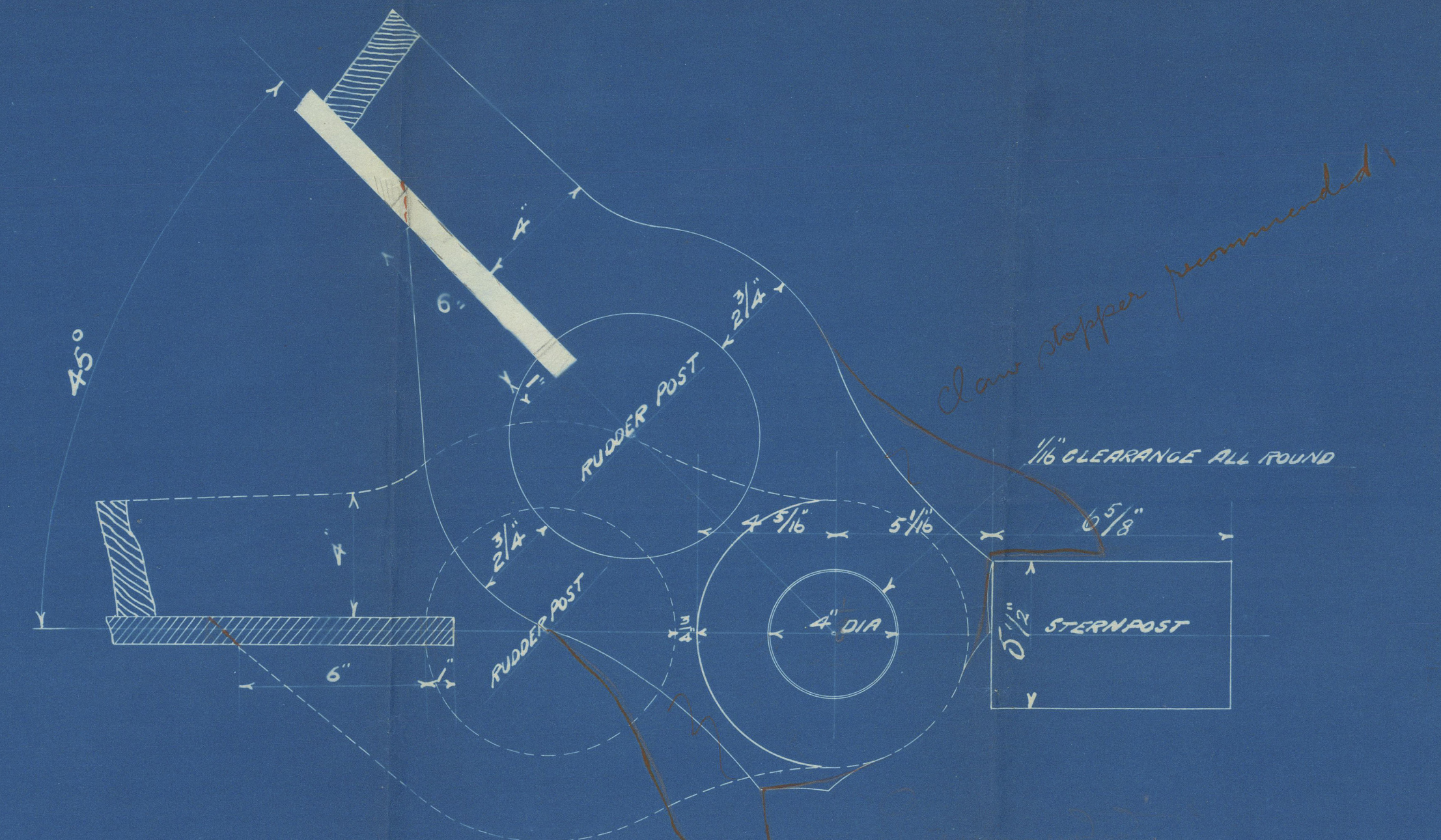


— S. S. N° 131. — RUDDER & STERNFRAME.

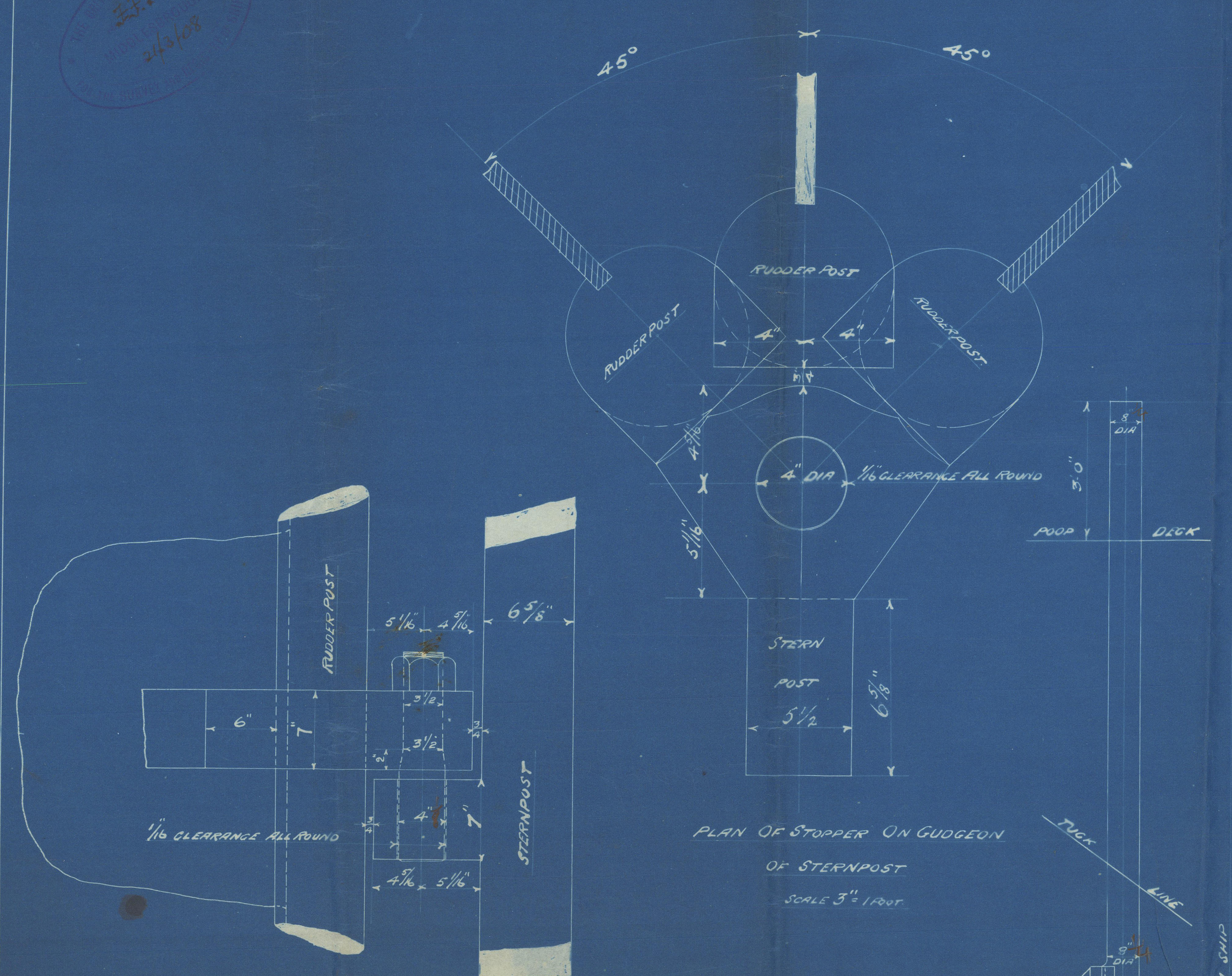
SCALE 1/2 IN = 1 FT.



STOPPER ON RUDDER ARM
 SCALE 3/4\"/>

DOTTED LINE REPRESENTS ORDINARY GUDGEON ON ARM.
 FULL LINE " STOPPER ON ARM.
 GUDGEONS TO BE BORED TO SUIT 4\"/>

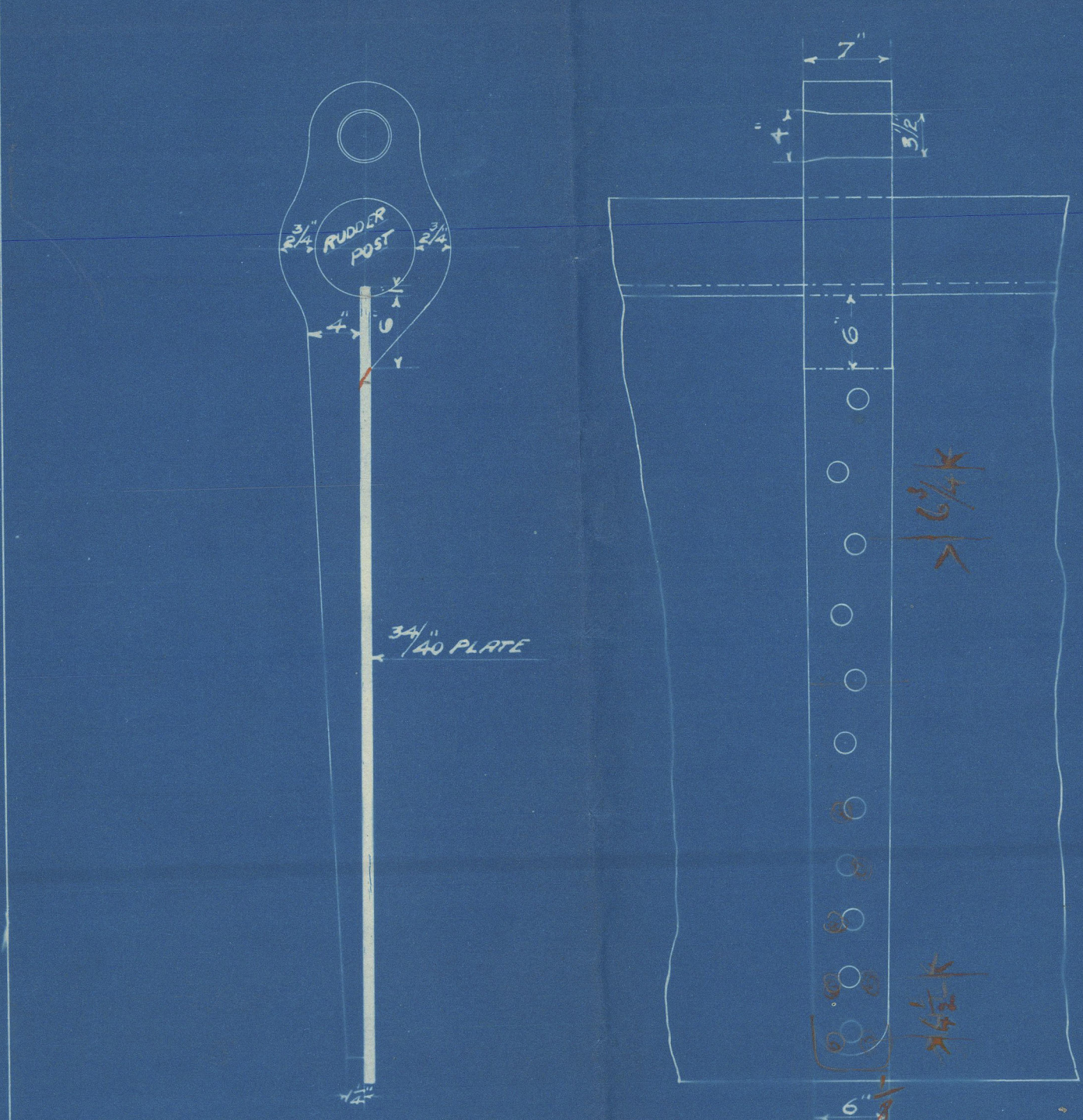
HOLES IN STERNFRAME TO BE DRILLED 1 1/2\"/>



**PLAN OF STOPPER ON GUDGEON
 OF STERNPOST**
 SCALE 3/4\"/>

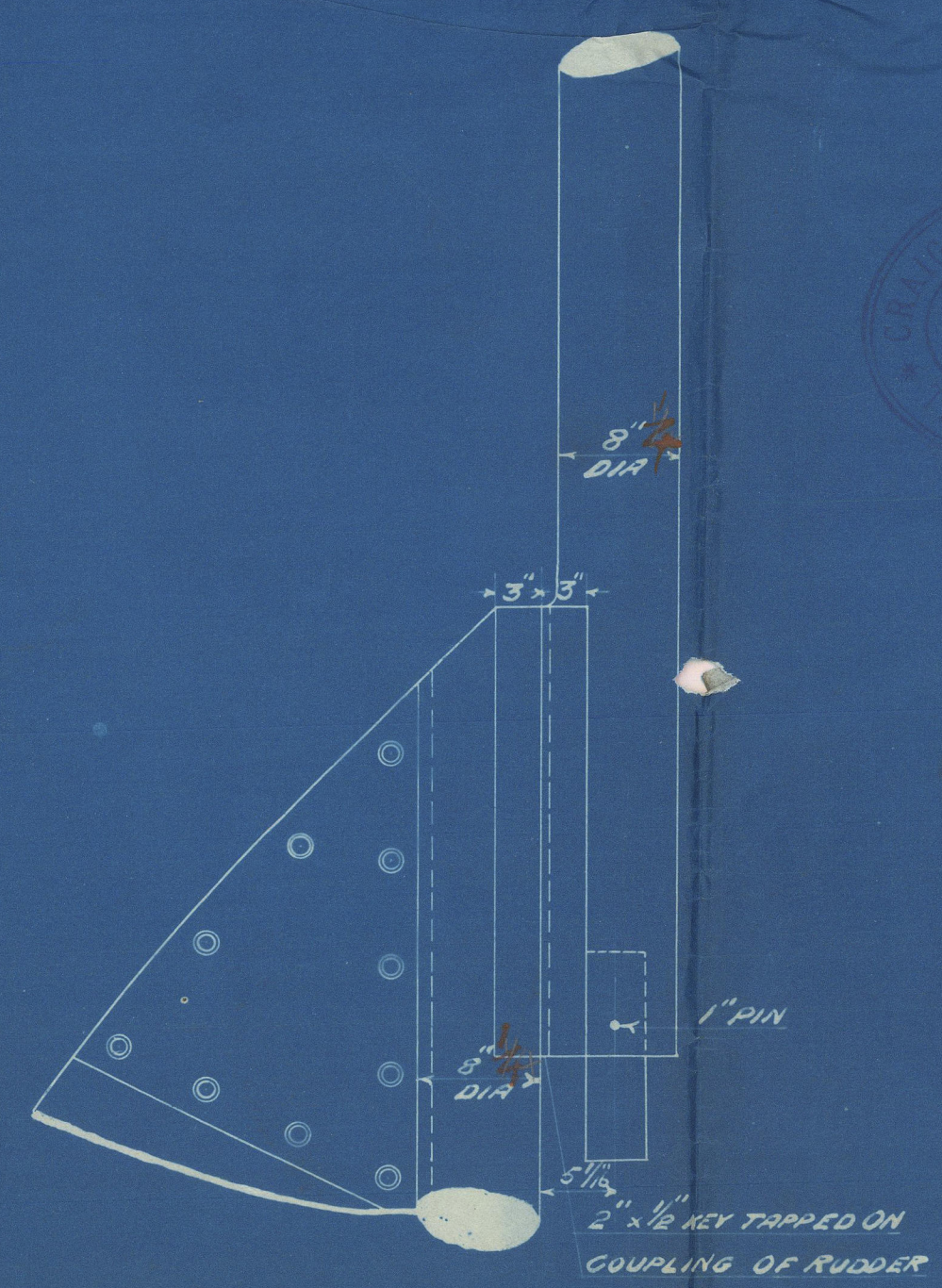
DETAIL OF PINTLES
 SCALE 1 1/2 IN = 1 FT.

PINTLES OF STEEL AND TO BE PORTABLE.

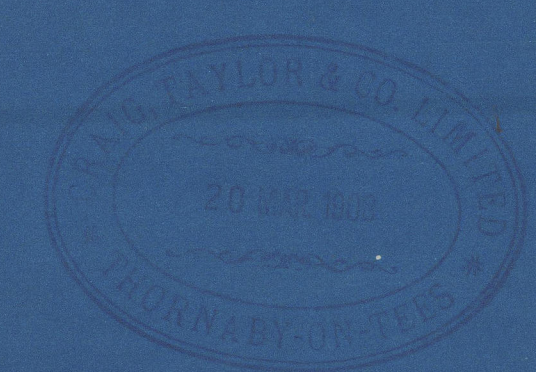
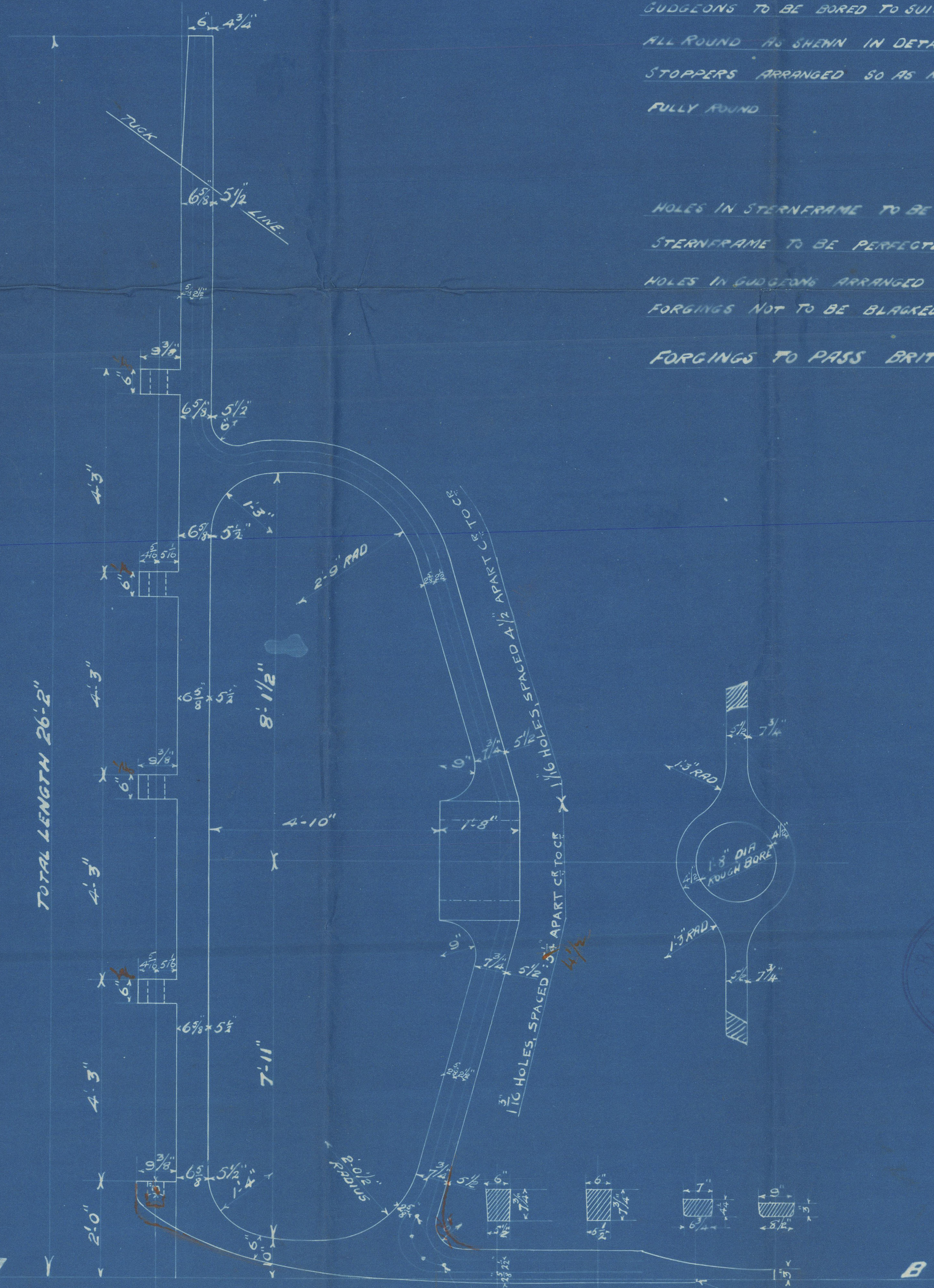


DETAIL OF ARMS
 SCALE 1 IN = 1 FT.

POSITION OF ARMS &c TO BE TAKEN FROM STERNPOST AS FORGED
 CENTRE LINE OF PINTLES TO BE IN LINE WITH CENTRE OF RUDDER STOCK
 RUDDER FRAME TO BE DRILLED COMPLETE. HOLES 1 1/2\"/>



DETAIL OF COUPLING
 SCALE 1\"/>



Craig Taylor & Co

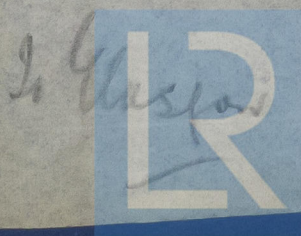
no 131

Stern frame & Rudder

S.S. Norbarn.

ELLA

002543-002549-0116



© 2020
21/3/08

Lloyd's Register
Foundation