

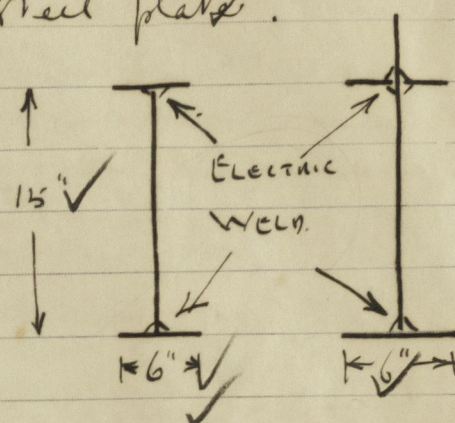
# Lloyd's Register of Shipping.

Ship's Name ASSIDUITY.Official No. 162508.

Memorandum of alterations reported since ship was surveyed for assignment of Load Lines in \_\_\_\_\_

N<sup>o</sup> 1 + 2 Hatches have now been fitted with hatch beams, carrier and external side bracket in conformity with approved sketch 22/8/49. except that the beams have been fabricated from 1/2" steel plate.

	N <sup>o</sup> 1	N <sup>o</sup> 2.
Number	3.	6.
HATCH BEAMS. Spacing.	4'-7 1/2" ✓	4'-9" ✓
Bearing surface	3" ✓	3" ✓



21 OCT 1949