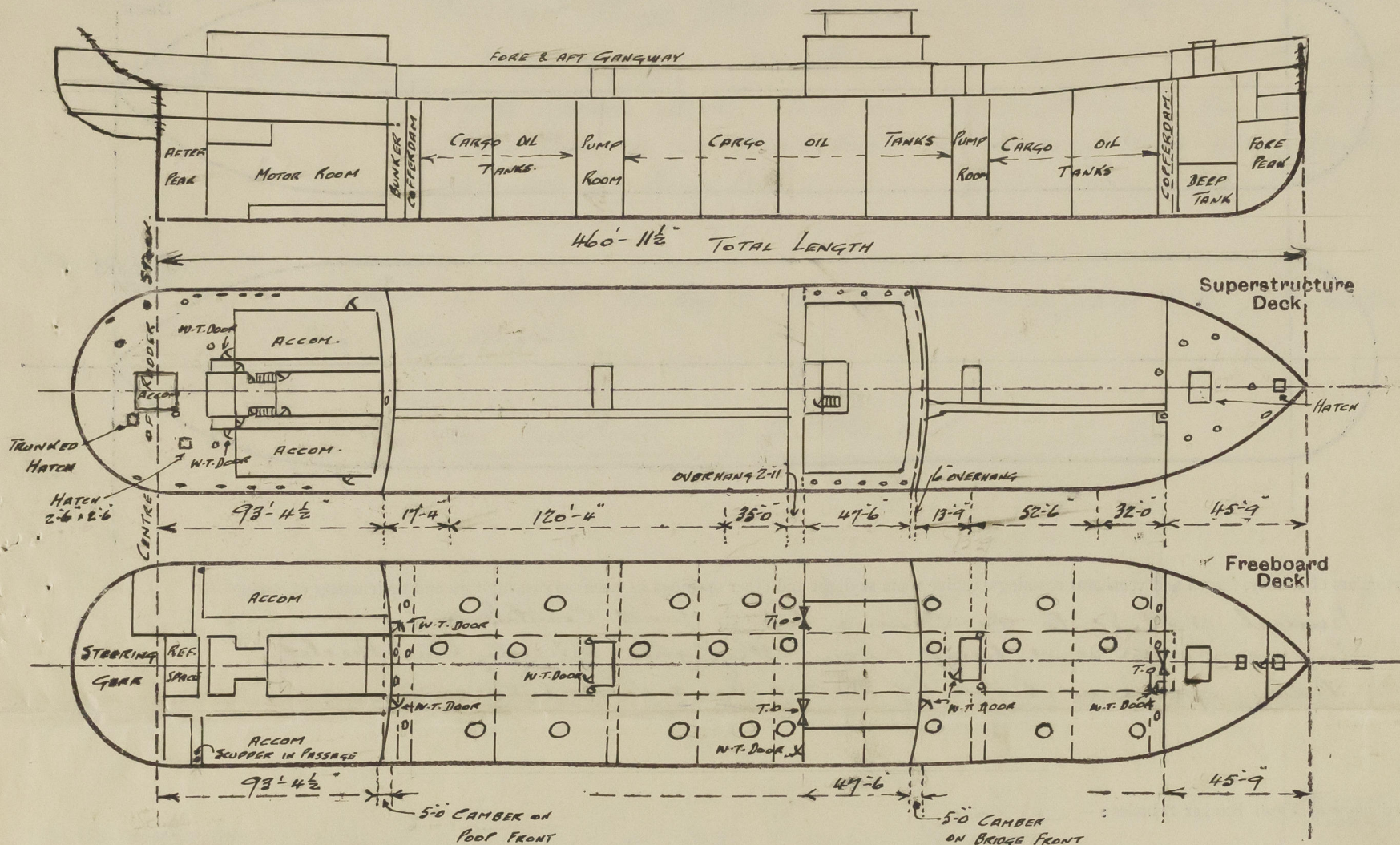


Lloyd's Register of Shipping.
SURVEYS FOR FREEBOARD.
(CONDITIONS OF ASSIGNMENT.)

Ship's Name *EMPIRE GRENADA* Port of Survey *Glasgow*
Official Number _____ Surveyor's Signature *A. Dickerson*
Nationality and Port of Registry *British Glasgow* Date of Survey *March 1946*

Disposition and dimensions of superstructures, trunks, deckhouses and machinery casings to be inserted in the diagrams and tabular statement:—



Particulars of Superstructures, Trunks, Casings, Deckhouses.								
	Coaming	Plating	Stiffeners	Spacing	End Attachments of Stiffeners	Size of Openings	Height of Sills	Height of Casings
Poop Bulkhead ...	—	.44	8x4x.50 A. Welded toe on	27"-31"	Welded Top & bottom	2@ 5'0"x2'6"	18"	7'6"
Raised Quarter Deck Bulkhead ...								
Bridge, After Bulkhead32	5x3/4 Plate Welded toe on 8x6x3/4 BA.	30"-33"	Welded Top & bottom	2@ 5'0"x3'1"	18"	7'6"
Bridge, Forward Bulkhead46	8x5 1/2x.46 A. Welded toe on 8x9x3/4 BA.	30"-33"	Do	1@ 5'0"x2'6"	18"	7'6"
Forecastle Bulkhead34 & .30	5x3/4 & 6x3/4 Plate Welded toe on	27"-31"	Do	1@ 5'0"x4'0"	18"	7'6"
Trunk, Aft ...								
Trunk, Forward <i>2 hump rooms</i>		.40	5x3x.32 A. 3/16 aft end Welded toe on	19"-32"	Welded Top & bottom	1@ 4'3"x2'3"	17 & 17 1/2"	7'0"
Exposed Machinery Casings on Freeboard or Raised Quarter Decks ...								
Exposed Machinery Casings on Superstructure Decks ...								
Machinery Casings within Superstructures not fitted with Class I Closing Appliances ...								
Deckhouses on Flush Deck Ships ...								

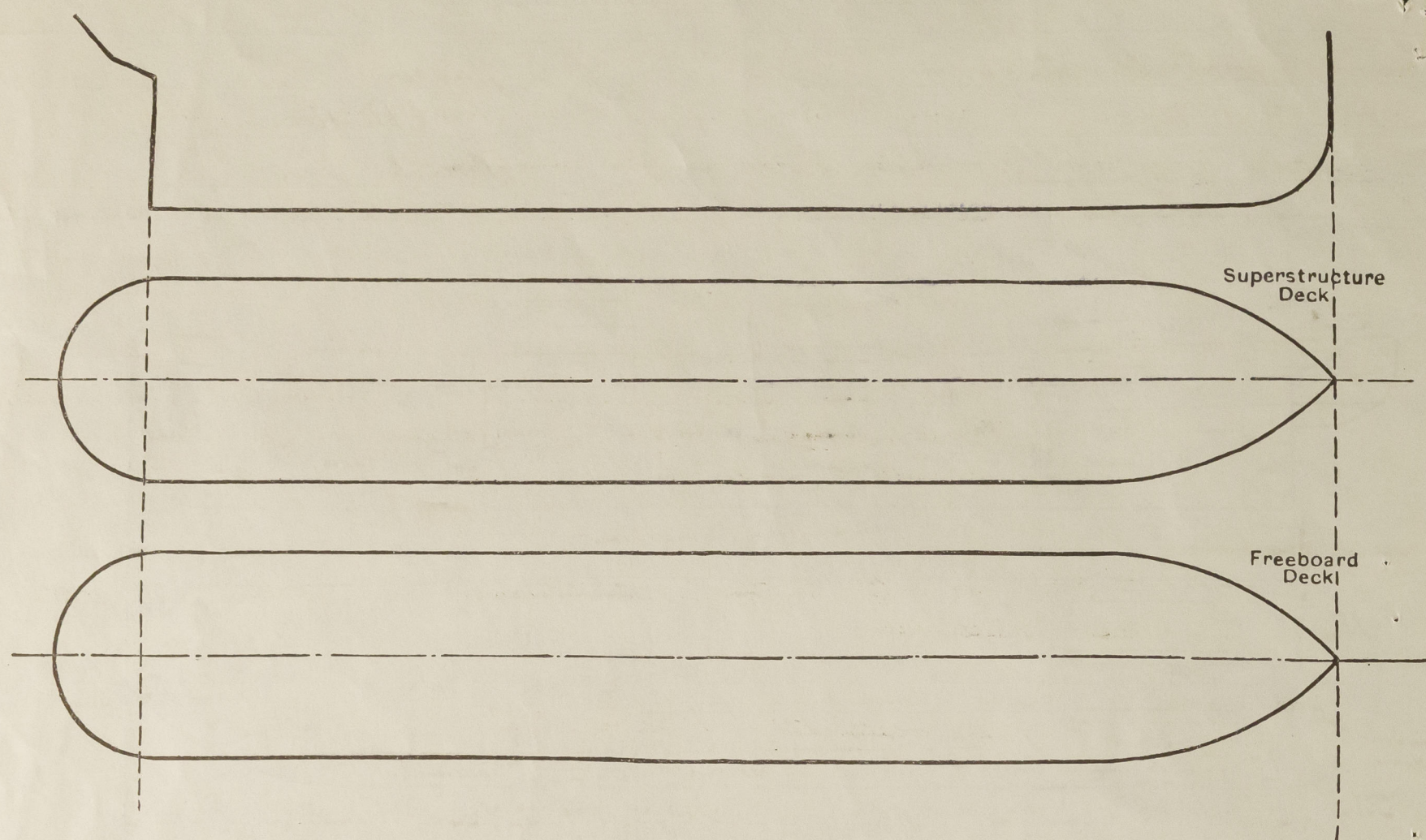
Protected by steel Deckhouse.

Particulars of Closing Appliances (state if capable of being manipulated from both sides).

Poop Bulkhead ...	<i>2 Hinged W.T. Doors, closed from both sides</i>
Raised Quarter Deck Bulkhead ...	
Bridge, After Bulkhead ...	<i>2 Tonnage openings closed by portable plates secured by hook bolts not passing through bhd & 1 W.T. door closed from both sides</i>
Bridge, Forward Bulkhead ...	<i>1 Hinged W.T. Door closed from both sides</i>
Forecastle Bulkhead ...	<i>1 Tonnage opening closed by portable plate secured by hook bolts not passing through bhd & 1 hinged W.T. door closed from both sides.</i>
Exposed Machinery Casings on Freeboard or Raised Quarter Decks ...	
Exposed Machinery Casings on Superstructure Decks ...	
Machinery Casings within Superstructures not fitted with Class I Closing Appliances ...	
<i>2 Main hump rooms</i>	
Deckhouses on Flush Deck Ships ...	<i>2 Hinged W.T. Doors (one each house) closed from both sides</i>

PARTICULARS OF PROTECTION TO OPENINGS, ETC.

The following diagrams should be used to indicate the positions of cargo and coaling hatchways, gangway, cargo and coaling ports, ventilators, companionways, etc., which would affect the seaworthiness of the ship :—



Particulars of fiddley, funnel and ventilator coamings, engine room skylight and other openings in machinery casing tops and their means of closing :—

Funnel and Vents on casing top in good Condition
Engine Room and Pump Room Skylights Strongly Constructed
Fidley openings closed by strong hinged steel covers.

Particulars of Flush Bunker Scuttles:— *None.*

Particulars of Companionways:—

Entrance to Pump Room:
at Felo point: - W.T. Steel
door with 18 S.I.L., closed
from both sides ✓

Deckhouse on Bridge, OK enclosing ladderway
to Bridge tower deck - Entrance to stairway
down to bridge space, from wood door in
after end of Saloon House with 15' fall,
closed from both bridges

Roops Compensum Roops - cut after
cut of Roops Deckhouse 475.
Rating 30, Stiffeners 41.25 $\frac{5}{8}$ A.
at 30' apart, With W.T. Steel
Roos 50" x 20" With 16" Sill
closed from both sides ✓

Particulars of Ventilators in exposed positions on freeboard and superstructure decks :—

2 Vents on Feb. DR. 12" dia. Coaming 36" x 34" to Five Hold.
3 " " " 10" " " 36" x 32" Feb 6. Lump Run.
1 " " " 8" " " 36" x 30" - Store
1 G.N. Vent " " 8 x 4 1/2 3/4, 30" high to Feb space
1 Vent on upper DR, 10" dia Coaming 80" x 32" to Lump Run.
at Feb front. Vent supported from Feb Front
X 4 Vents on upper DR, 21" dia. Coaming 100" x 44" to Main Lump Run
10 " " Bridge DR 6" " " 30" x 30" to Bridge T. Dks
2 " " Loop DR 10" " " 30" x 32" to Loop T. Dks
1 " " " 9" " " 30" x 32" " "
2 " " " 8" " " 30" x 30" " "
13 G.N. Vents 8 x 4 1/2 3/4, 30" high on Loop DR
1 Vent on Loop Deck 8" dia Coaming 34" x 44" to Refug. Manbr.

2 Supported from Pump Room Top
" " by brackets from deck.

Used by Steel plates,
Mushroom caps or
Wood plugs and Canvas
Covers.

All Vents Constructed in
accordance with the Rules

Water excluding Coal.

Particulars of Air Pipes in exposed positions on freeboard, raised quarter, or superstructure decks :—

Particulars of the Fish in capture positions on Riceboat, near quarter, or reported from deck.						
1	W-1.	Air Pipe	on Deck	18"	Rough x 4" dia	to Four peak
2	"	"	"	18"	x 4"	Deep Tank
2	"	"	Upper "	7-6	x 3"	Fwd. Coff.
2	"	"	"	7-6	x 4"	Aft. Coff.
2	"	"	"	7-6	4"	Bulk Head
4	"	"	Boats	18"	2½"	F.W. Tanks
1	"	"	"	18"	3"	Coff. Peak
1	"	"	"	18"	3"	Middle Trunk
3	"	"	"	18"	2½"	Stem Comp.
	"	"	"	6-6	3"	Bulk. Oil Tank

All Air pipes closed by
guage or Wood plugs and
Canvas Covers.

Copperdam, Burkes and Lub.
Oil Air pipes apparently
Supported.

ix Hinged flaps to forward
and after compartments ✓

Particulars of Gangway, Cargo and Coaling Ports:— *None*

Particulars of Scuppers and Sanitary Discharge Pipes :—

Upper St. Scupper:- 11-6 1/2 Scupper Cut through Gunwale bar in Wells

Forecastle & Bridge Spars - Screwed plugs in after Bulkheads ✓

Loop Tween Dr. Stoppers - Had overboard about 1/4 and fitted with 5 ton Valves at Ship's Side, those from Cavatonia and Wash places geared to Loop Deck. Several plugs fitted at inner ends in passages only.

Sanitary Discharges - These are from Deckhouses on Midy, & Poop Dk, also from Poop Tween Decks and are led overboard along L.W. With Flow Valves at Ship Side; those from Poop Tween Decks are leaded to Poop Dk.

Particulars of Side Scuttles:—

10" Dia in Loop, Bridge & Feb spaces and filled with fabricated
Steel Roadlights

All Ideals of Substantial Construction

Vertical distance of Sill of lowest Side Scuttle above top of keel

None below upper Dk

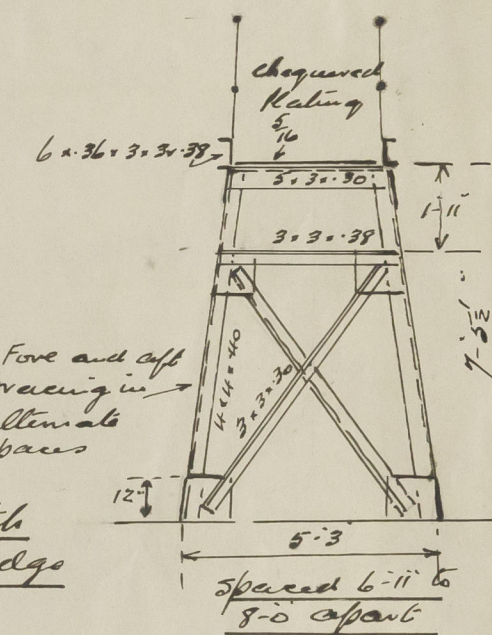
Particulars of Guard Rails :—

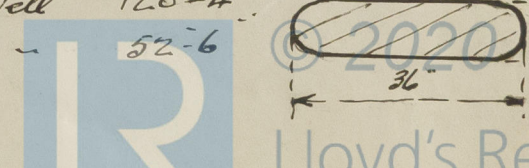
Stanchions 36 high with 3 rails, spaced
4'-0" to 5'-6" apart on File, Andy, Prop and
upper Decks.

Fore and aft gangway:- Stanchions 36" high, spaced 4'-0" to 4'-6" apart with 2 rails

Particulars of Gangways, Lifelines, etc. :—

Jungway as per sketch
fitted from Prop to Bridge
and Bridge to Feb



	Length of Bulwark	Height of Bulwark	Size of Freeing Ports	Number each side	Area each side	Rule area each side
After Well ... 172-8 ...	17'-4" from Poop 35'-0" aft of Bridge overhang.	3'-6" 3'-6"	1 @ 36" x 9" 1 @ 36" x 9"	2	Over 50% open rails	Open Rails for 1/2 h off
Forward Well 99'-3 ...	13'-9" forward of Bridge overhang. 32'-0" aft of Fole	3'-6" 3'-6"	1 @ 36" x 9" 1 @ 36" x 9"	2	Over 50% open Rails	exposed part of Weather Deck
State position of each freeing port	After Well:— 1-0 fwd of Poop to after end of Freeing Port 1-0 aft - Bridge end to forward end of Freeing Port 13" above Deck (F. and A. position and height above deck edge) Forward Well:— 1-0 fwd " " front " after " " 12" " " 1-0 aft - Fole front - forward " " " " 12" " "					
State whether the freeing ports are fitted with shutters, bars, or rails, and give particulars of such:—	None.					
Additional area where sheer is less than standard.	Open Rails fitted between bulwarks in After Well 120'-4" " " " " " " Fore " 52'-6" 					

PARTICULARS OF PROTECTION TO OPENINGS, ETC.

HATCHWAYS ON FREEBOARD AND SUPERSTRUCTURE DECKS.									
FREEBOARD DECK					SUPERSTRUCTURE DECK				
Description of Hatchway	24	Main holes to Coffers & Bunkers	Hatch in fore to Chain locker	Hatch in fore to FCL	Hatch on fore to fore hold	Fore DH Hatch to peak	Fore DH Hatch	Fore DH Hatch	
Dimensions of Hatchway	4'0" Dia	8'0" x 23'18"	2'0" x 2'0"	2'6" x 2'6"	9'0" x 10'0"	2'6" x 2'6"	2'6" x 2'6"	3'0" x 2'3"	
COAMINGS	Height above Deck	10' 3/4"	7' 3/4" x 50"	9' 3/4" x 44"	9' 3/4" x 44"	30"			
	Thickness	Plat	Angle	BA	BA	.44			
	Sides	Welded	Welded to Deck to fore Channel			.44			
	Ends	to Deck				6'3" x 32" BA			
HATCH BEAMS	Number	/	/	/	/	Hatchway			
	Spacing	/	/	/	/	Trunked to upper Deck .30			
	Scantling and Sketch	/	/	/	/	Plating with stiffeners 3' x 2 1/2" x 3/16"			
	Bearing Surface	/	/	/	/	Angles 24" - 30" apart			
FORE AND AFTERS	Number	/	/	/	/				
	Spacing	/	/	/	/				
	Unsupported Lengths	/	/	/	/				
	Scantling* and Sketch	/	/	/	/				
HATCH COVERS	Material	Steel	Steel	Steel	Steel	Steel			
	Thickness	Plat	Plat	Plat	Plat	Cover .44			
	How fitted	.40	Covers	.44	.44	3'6" x 38" BA			
	Bearing Surface	Stripped	.44	Stripped	Stripped	Stiffeners in			
Spacing of Cleats	With	Bolted	With	With	Covers				
Number of Tarpaulins	20	W.T.	13	16	16				
*Are wood fore and afters steel shod at all bearing surfaces?									
Are battens and wedges efficient and in good condition?									
Are tarpaulins in good condition and in accordance with rule requirements?									
Are lashings provided in accordance with rule requirements?									

Particulars of any special features :—

Endorsement at first survey and at surveys for renewal of Certificate :—

The fittings and appliances are in accordance with the particulars shown on this form (or as now modified) and are in good condition.

