

19 MAR 1945

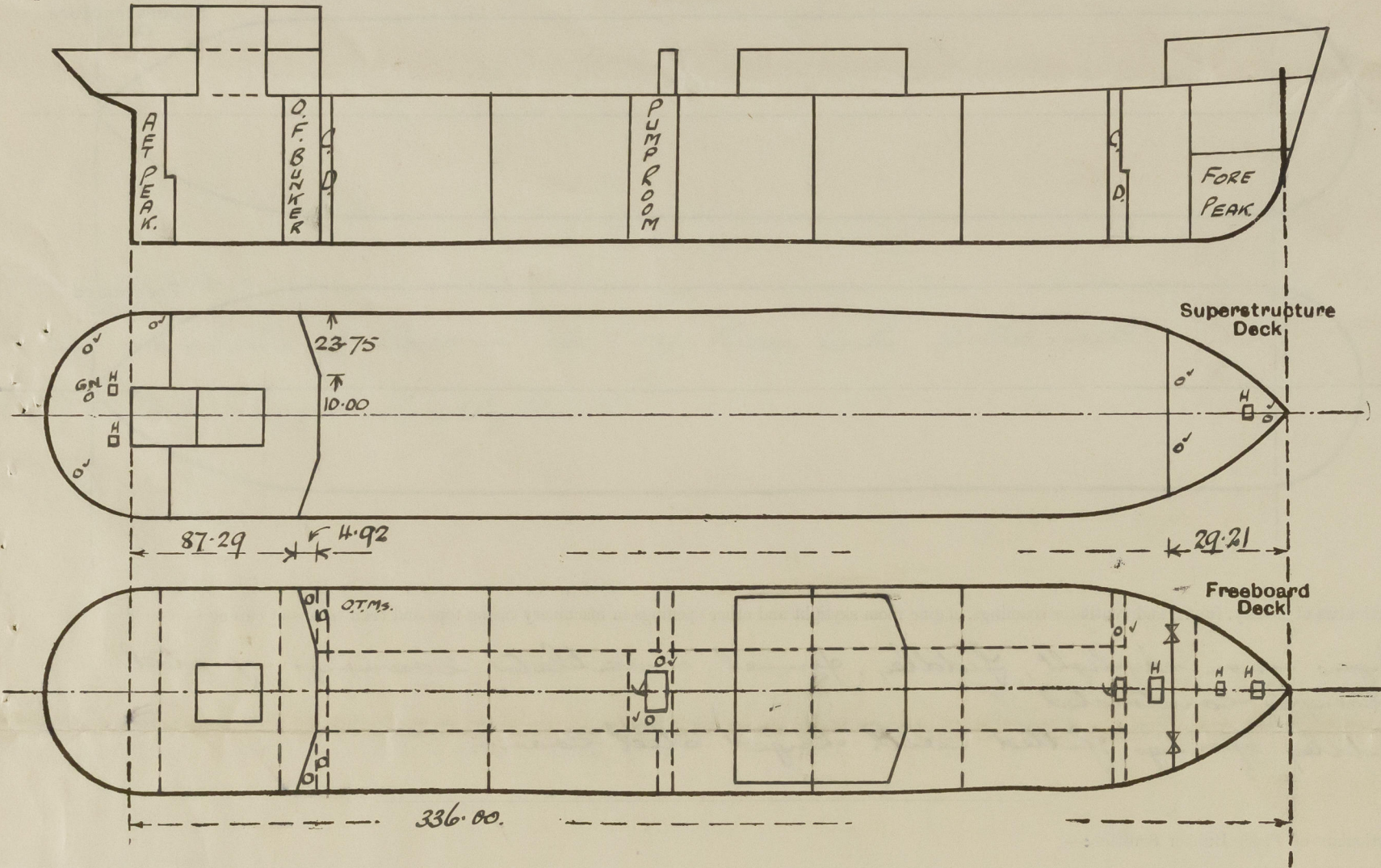
Index No. 37910  
(For London Office only).

Lloyd's Register of Shipping.  
SURVEYS FOR FREEBOARD.  
(CONDITIONS OF ASSIGNMENT.)

Nº 34155

Ship's Name *M.V. BELA* Port of Survey *Sunderland*  
Official Number \_\_\_\_\_ Surveyor's Signature *W. E. Miller*  
Nationality and Port of Registry *British, London* Date of Survey *During Construction*

Disposition and dimensions of superstructures, trunks, deckhouses and machinery casings to be inserted in the diagrams and tabular statement : --

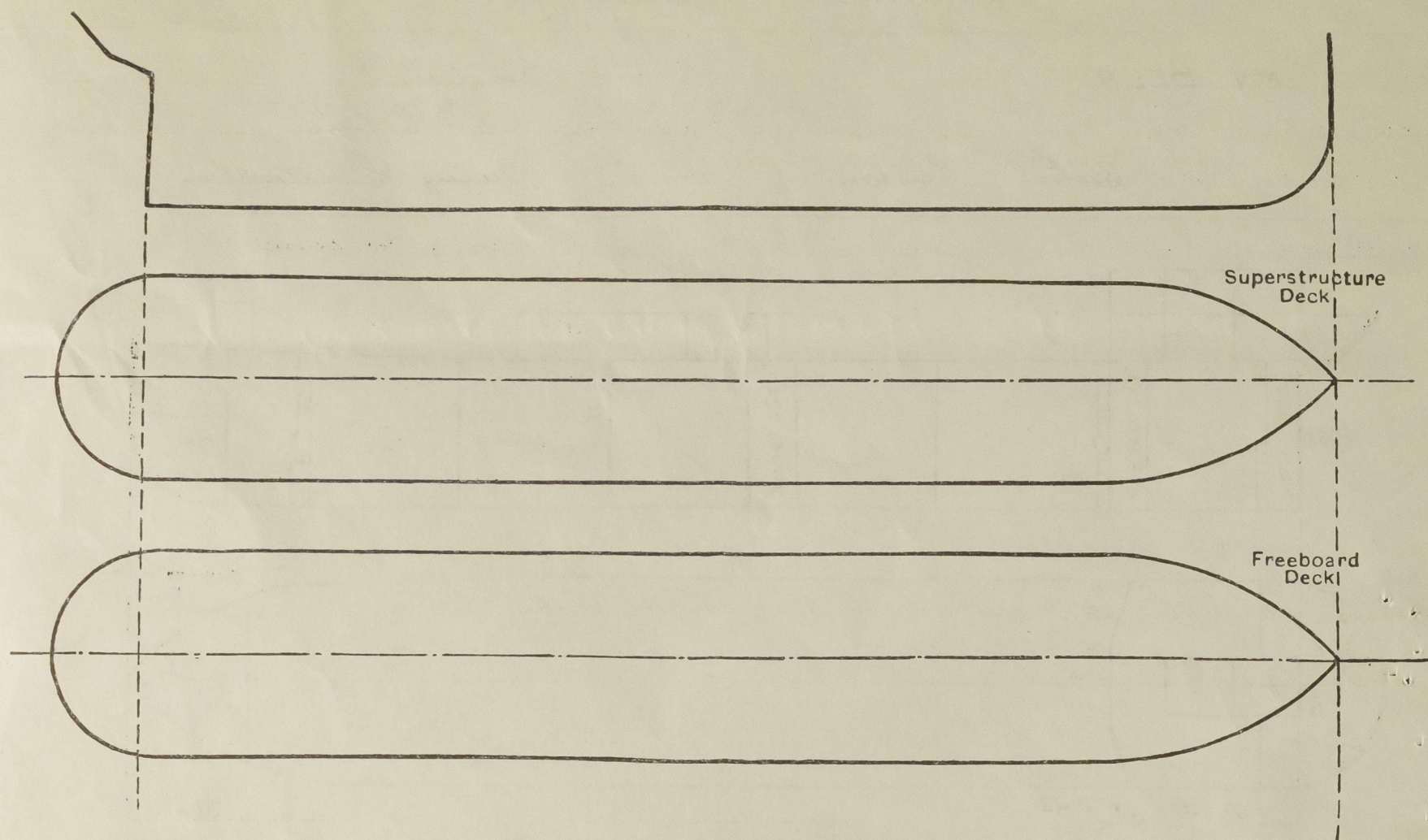


Particulars of Superstructures, Trunks, Casings, Deckhouses.								
	Coaming	Plating	Stiffeners	Spacing	End Attachments of Stiffeners	Size of Openings	Height of Sills	Height of Casings
Poop Bulkhead ... ..	✓	.40	9x32x3/8 L	24"-33"	Lugged top welded to deck	NONE	✓	✓
Raised Quarter Deck Bulkhead ...	✓	✓						
Bridge, After Bulkhead ... ..	✓	✓						
Bridge, Forward Bulkhead ... ..	✓	✓						
Forecastle Bulkhead ... ..	.26	.26	4x3x5/16	30"	welded to deck	4'-1" x 3'-1"	18"	7'-6"
Trunk, Aft ... ..	✓	✓						
Trunk, Forward ... ..	✓	✓						
Exposed Machinery Casings on Freeboard or Raised Quarter Decks ...	✓	✓						
Exposed Machinery Casings on Superstructure Decks ... ..	.34	.30	5x3x1/4 L	30"-34"	continuous	✓	✓	✓
Machinery Casings within Superstructures not fitted with Class I Closing Appliances ... ..	✓	✓						
Deckhouses on Flush Deck Ships ...	✓	✓						
Particulars of Closing Appliances (state if capable of being manipulated from both sides).								
Poop Bulkhead ... ..	✓	no openings.						
Raised Quarter Deck Bulkhead ...	✓							
Bridge, After Bulkhead ... ..	✓							
Bridge, Forward Bulkhead ... ..	✓							
Forecastle Bulkhead ... ..	2 1/2" sliding boards in full height channel. ✓							
Exposed Machinery Casings on Freeboard or Raised Quarter Decks ...	✓							
Exposed Machinery Casings on Superstructure Decks ... ..	✓							
Machinery Casings within Superstructures not fitted with Class I Closing Appliances ... ..	✓							
Deckhouses on Flush Deck Ships ...	✓							



# PARTICULARS OF PROTECTION TO OPENINGS, ETC.

The following diagrams should be used to indicate the positions of cargo and coaling hatchways, gangway, cargo and coaling ports, ventilators, companionways, etc., which would affect the seaworthiness of the ship:—



Particulars of fiddley, funnel and ventilator coamings, engine room skylight and other openings in machinery casing tops and their means of closing:—

Engine room skylight, fiddley, funnel, & ventilator coamings of steel strongly constructed. ✓  
fiddley openings fitted with hinged steel covers. ✓

Particulars of Flush Bunker Scuttles:—

NONE. ✓

Particulars of Companionways:— on Freeboard Deck.

Pump Room Entrance 6'4" deck opening, plating 3/16" stiff 4x3x36 D.A. spaced 18" 24" apart. bracketed top, 30 top plates with beams 5x3x30 L, hecker Type W.T. door 4'0"x2'3", 18" coaming, 2 skylights. ✓  
Ford Pump Room Entrance 5'2"4", plating 40, 3 1/2 x 3 1/2 x 40 stiff, hecker Type W.T. door 4'0"x2'3", 18" coaming. ✓

Particulars of Ventilators in exposed positions on freeboard and superstructure decks:—

Free Deck

1-6" Vent. to Tween Decks Coaming 36"x30" ✓  
2-9" " " " " 36"x32" ✓

Poor Deck

3-6" Vents. to Stores etc. " 30"x30" ✓  
7-5" G.N. " " Magazine 18" to lip. ✓

Freeboard Deck

1-9" Vent. to Ford Pump Room Coaming 36"x32" ✓  
2-18" " " " " " 36"x40, 25" tube extending to 9-9" ✓  
from deck, stayed ✓

Ventilators fitted with wood plugs & canvas covers. ✓

Particulars of Air Pipes in exposed positions on freeboard, raised quarter, or superstructure decks:—

Air pipes on Poop & Fore Decks 18" to lip. ✓  
Air pipes on Upper Deck 36" to lip. ✓

Air pipes fitted with wood plugs or gauge and canvas covers. ✓

Particulars of Gangway Cargo and Coaling Ports:—

NONE. ✓

Particulars of Scuppers and Sanitary Discharge Pipes:—

Discharges on or above Freeboard Deck led to N.R. Values. ✓

Particulars of Side Scuttles:—

10" dia. sidelights to Accom<sup>2</sup> in Poop Tween Decks, fitted with substantial hinged deadlights. ✓

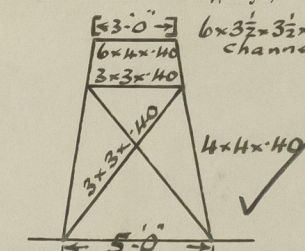
Vertical distance of Sill of lowest Side Scuttle above top of keel

32'-0" ✓

Particulars of Guard Rails:—

in way of Accom<sup>2</sup>, bulwark 69'-0" x 3'-6" x 25 plating, rail has 6"x3"x34" L on remainder of Upper Deck, on Poop & Fore Decks, rails 3'-6" high, 3 rods stanchions about 5'-0" apart.

Particulars of Gangways, Lifelines, etc.:—



Fore & Aft Gangway 7'-6" high from Poop to Bridge house, & from Bridge house to Fore, 1/4" chequered plating, fore & aft bracing, 3 off forward, 3 off aft, supports spaced 8-9, 9-6, 9-10" apart. Rails 3'-6" high, 2 rods, at gangway sides. ✓

Particulars of Freeing Arrangements.

	Length of Bulwark	Height of Bulwark	Size of Freeing Ports	Number each side	Area each side	Rule area each side
After Well ...	✓					
Forward Well ...	✓					

State position of each freeing port ... (After Well:— ✓)  
(F. and A. position and height above deck edge) (Forward Well:— ✓)

State whether the freeing ports are fitted with shutters, bars, or rails, and give particulars of such:— ✓

Additional area where sheer is less than standard. ✓

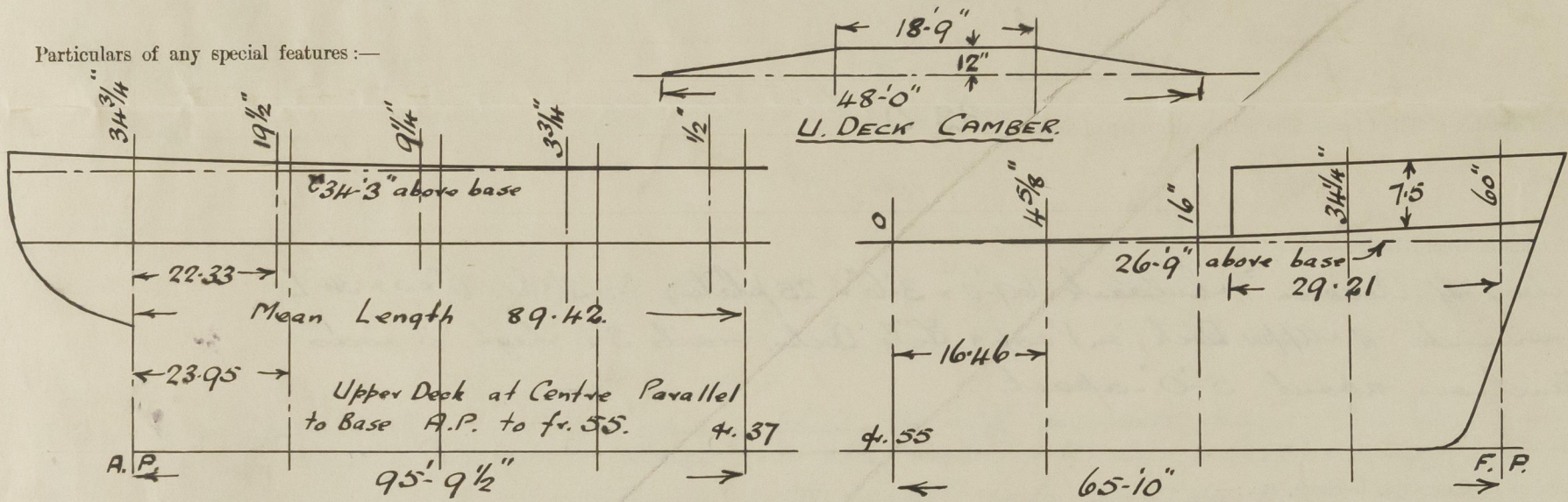
M/V. BELA.



PARTICULARS OF PROTECTION TO OPENINGS, ETC.

HATCHWAYS ON FREEBOARD AND SUPERSTRUCTURE DECKS.									
Description of Hatchway		FREEBOARD DECK							
Dimensions of Hatchway		15 Hatches to Cargo Tanks. 48" dia x 10 x 3/4" coaming, 40 O.T. covers, 8 toggle-ls. ✓							
COAMINGS	Height above Deck	4 Hatches to After Cofferdam & O.F. Bunker. 24" dia. x 8 x 40", 50 covers, 5 toggle-ls. ✓							
	Thickness	Hatch to Store Lock 3-8 1/2 x 2-6 x 9" L coaming, rest, cover, cleats, 1 tarpaulin. ✓							
	Sides	Hatch to Chain Locker. 1-9 x 2-0 x 9" L coaming, rest, cover, cleats, 1 tarpaulin. ✓							
	Ends	Hatch to Store Deep Tank. 2-7 x 4-1 x 8 x 40" coaming, 50 O.T. covers, 10 toggle-ls. ✓							
HATCH BEAMS	Number	Fc'le DECK.							
	Spacing	Hatch to Tween Decks 2-6 x 2-6 x 5 x 5/16 coaming, 40" covers, 8 toggle-ls. ✓							
FORE AND AFTERS	Unupported Lengths	POOP DECK.							
	Scantling and Sketch	2 Hatches to Magazine & Store 2-6 x 2-6 x 9 x 40" coaming, 40" covers, 8 toggle-ls. ✓							
	Bearing Surface								
HATCH COVERS	Material								
	Thickness								
	How fitted								
	Bearing Surface								
Spacing of Cleats									
Number of Tarpaulins									
<p>*Are wood fore and afters steel shod at all bearing surfaces? Are battens and wedges efficient and in good condition? Are tarpaulins in good condition and in accordance with rule requirements? Are lashings provided in accordance with rule requirements?</p>									

Particulars of any special features:—



Endorsement at first survey and at surveys for renewal of Certificate:—

The fittings and appliances are in accordance with the particulars shown on this form (or as now modified) and are in good condition.



© 2020

Lloyd's Register  
Foundation